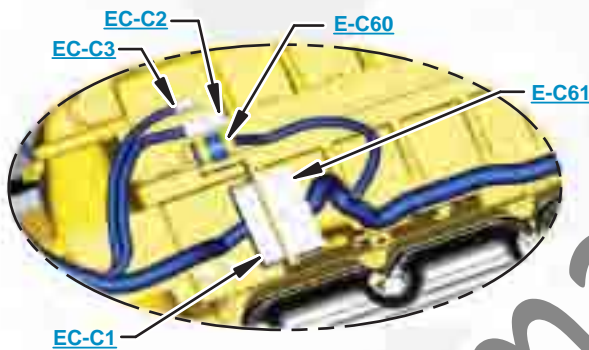


***This document is best viewed at a screen resolution of 1024 X 768.***

To set your screen resolution do the following:  
**RIGHT CLICK** on the **DESKTOP**.  
 Select **PROPERTIES**.  
**CLICK** the **SETTINGS TAB**.  
**MOVE THE SLIDER** under **SCREEN RESOLUTION** until it shows **1024 X 768**.  
**CLICK OK** to apply the resolution.

The Bookmarks panel will allow you to quickly navigate to points of interest.



Click on any text that is BLUE and underlined. These are hyperlinks that can be used to navigate the schematic and machine views.

**VIEW ALL CALLOUTS**

When only one callout is showing on a machine view this button will make all of the callouts visible. This button is located in the top right corner of every machine view page.

HOTKEYS (Keyboard Shortcuts)		
	FUNCTION	KEYS
	Zoom In	"CTRL" / "+"
	Zoom Out	"CTRL" / "-"
	Fit to Page	"CTRL" / "0" (zero)
	Hand Tool	"SPACEBAR" (hold down)
	Find	"CTRL" / "F"



# Schematic

---

320B Excavators  
Hydraulic System (Attachment)  
One Way/One Pump Flow

---

4NR1-UP  
5BR1-UP  
6CR1-UP

This attachment schematic is to be used in conjunction with the Standard Schematic in this Service Manual.

---

# COMPONENT LOCATION



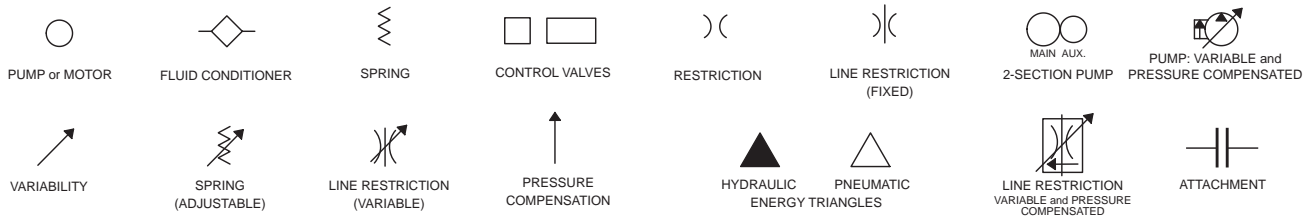
Description	Part Number	Machine Location	Schematic Location
Switch As - Pressure Switch	106-0181	<a href="#">1</a>	<a href="#">B-2</a>
Valve Gp - Check and Relief	41-6301	<a href="#">2</a>	<a href="#">D-3</a>
Valve Gp - Pilot	123-2604	<a href="#">3</a>	<a href="#">B-2</a>

SchematicCat.com

# FLUID POWER SYMBOLS



## BASIC COMPONENT SYMBOLS



## VALVE ENVELOPES

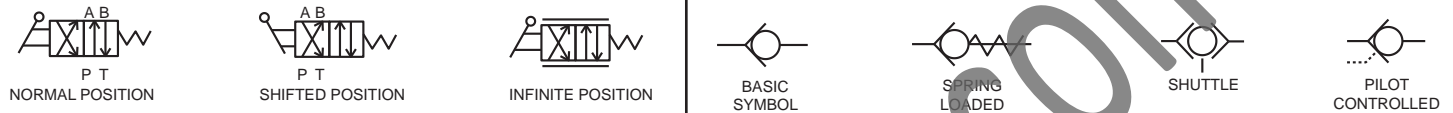
## VALVES

## VALVE PORTS



## CONTROL VALVES

## CHECK VALVES



## FLUID STORAGE RESERVOIRS



## MEASUREMENT

## ROTATING SHAFTS



## COMBINATION CONTROLS



## MANUAL CONTROL SYMBOLS



## RELEASED PRESSURE

## PILOT CONTROL SYMBOLS

## REMOTE SUPPLY PRESSURE



## ACCUMULATORS

## CROSSING AND JOINING LINES

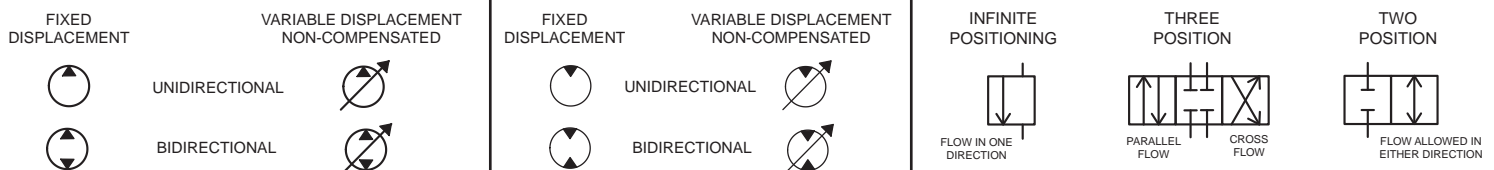
## HYDRAULIC AND PNEUMATIC CYLINDERS



## HYDRAULIC PUMPS

## HYDRAULIC MOTORS

## INTERNAL PASSAGEWAYS



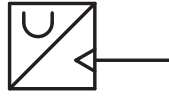
# ELECTRICAL SYMBOLS



## Hydraulic Symbols (Electrical)



Transducer  
(Fluid)



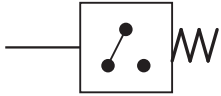
Transducer  
(Gas / Air)



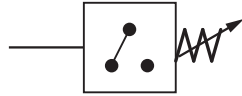
Generator



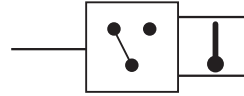
Electric Motor



Pressure Switch



Pressure Switch  
(Adjustable)

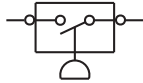


Temperature Switch

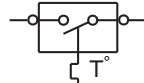


Electrical Wire

## Electrical Symbols (Electrical)



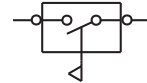
Pressure  
Symbol



Temperature  
Symbol



Level  
Symbol

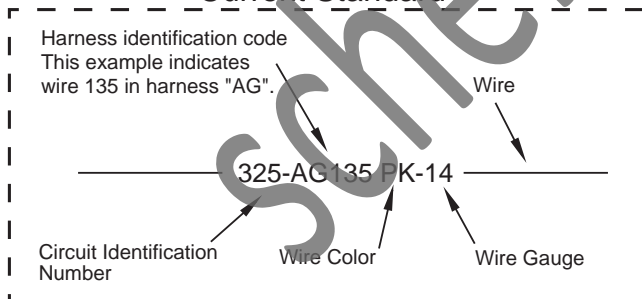


Flow  
Symbol

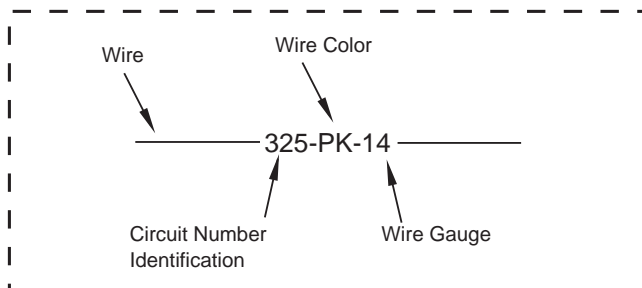
## Wire Number Identification Codes

### Electrical Schematic Example

#### Current Standard

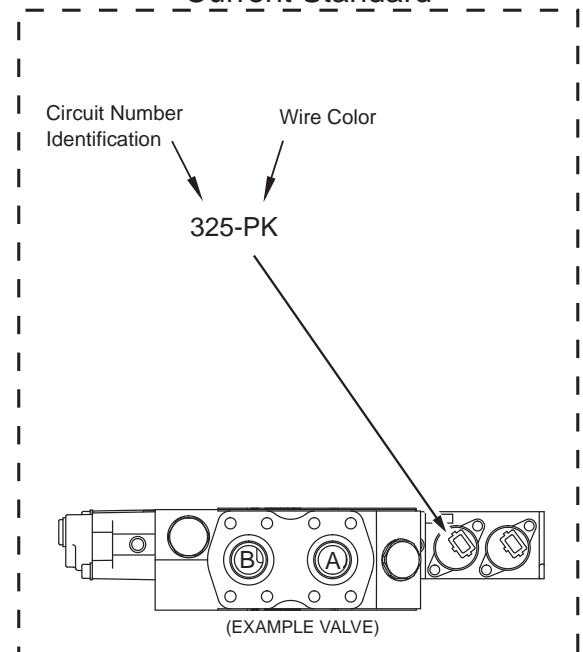


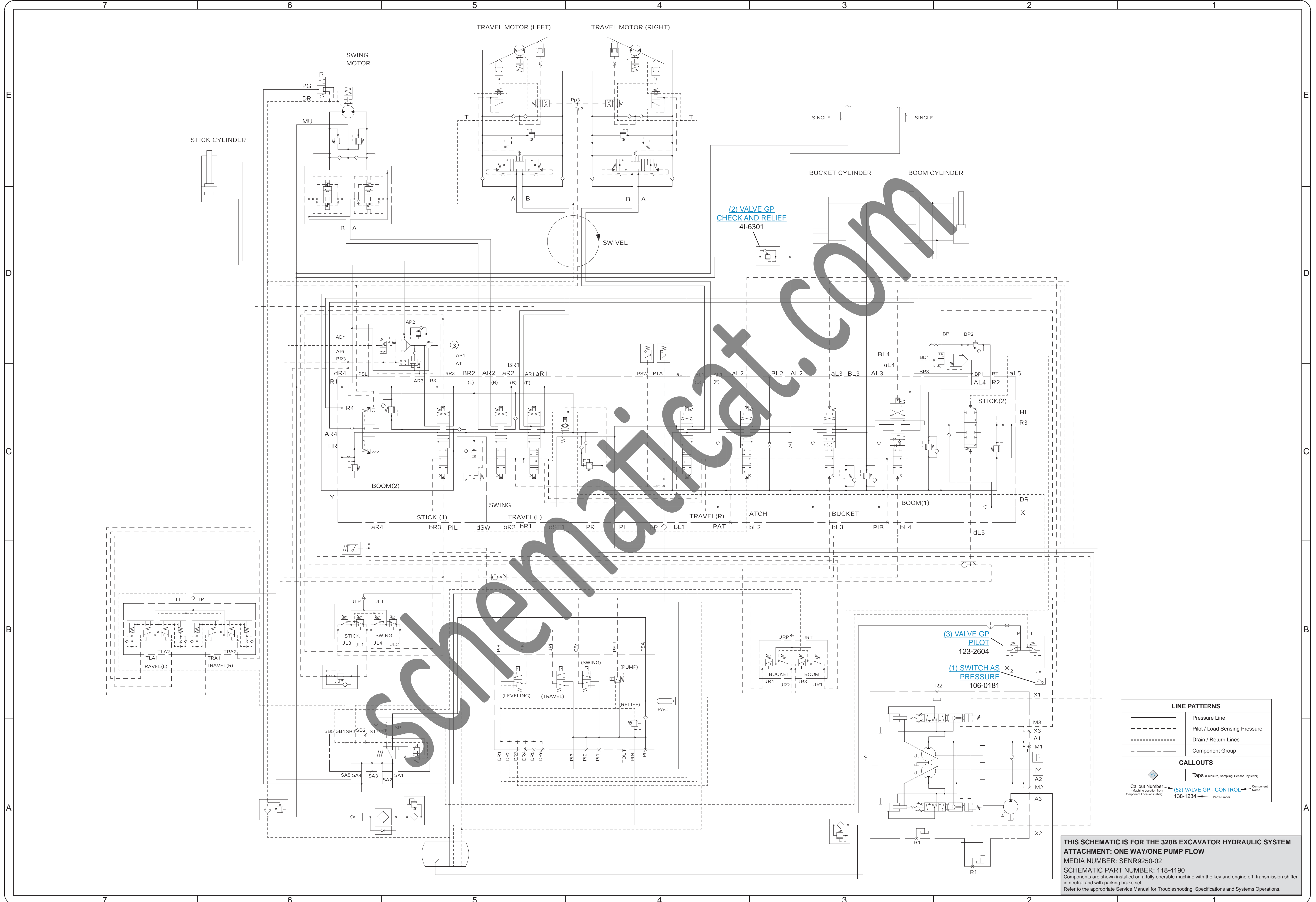
#### Previous Standard



### Hydraulic Schematic Example

#### Current Standard





LINE PATTERNS	
	Pressure Line
	Pilot / Load Sensing Pressure
	Drain / Return Lines
	Component Group

CALLOUTS	
	TAPS Pressure Sensing Sensor (by letter)
Callout Number	Component Location
	Component Name
	Page Number

**THIS SCHEMATIC IS FOR THE 320B EXCAVATOR HYDRAULIC SYSTEM**  
**ATTACHMENT: ONE WAY/ONE PUMP FLOW**  
 MEDIA NUMBER: SENR9250-02  
 SCHEMATIC PART NUMBER: 118-4190  
 Components are shown installed on a fully operable machine with the key and engine off, transmission shifter in neutral and with parking brake set.  
 Refer to the appropriate Service Manual for Troubleshooting, Specifications and Systems Operations.



# MACHINE COMPONENT LOCATIONS

