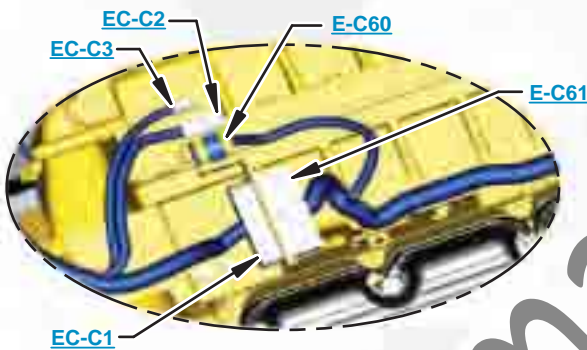




This document is best viewed at a screen resolution of 1024 X 768.

To set your screen resolution do the following:
RIGHT CLICK on the **DESKTOP**.
 Select **PROPERTIES**.
CLICK the **SETTINGS TAB**.
MOVE THE SLIDER under **SCREEN RESOLUTION** until it shows **1024 X 768**.
CLICK OK to apply the resolution.

The Bookmarks panel will allow you to quickly navigate to points of interest.



Click on any text that is BLUE and underlined. These are hyperlinks that can be used to navigate the schematic and machine views.

VIEW ALL CALLOUTS

When only one callout is showing on a machine view this button will make all of the callouts visible. This button is located in the top right corner of every machine view page.

HOTKEYS (Keyboard Shortcuts)		
	FUNCTION	KEYS
	Zoom In	"CTRL" / "+"
	Zoom Out	"CTRL" / "-"
	Fit to Page	"CTRL" / "0" (zero)
	Hand Tool	"SPACEBAR" (hold down)
	Find	"CTRL" / "F"



Schematic

320B Excavator Hydraulic System

320B:
3MR1-UP
5BR1-UP
9KR1-UP
1CS1-UP
4XW1-UP

320B N:
4NR1-UP

320B L:
4MR1-UP
6CR1-UP
5CS1-UP
5GW1-UP
2WZ1-UP

COMPONENT LOCATION



Description	Part Number	Machine Location	Schematic Location
AccumulatorGp	087-4456	1	B-4
CoolerGp-HydraulicOil	109-9496	2	A-6
CylinderGp-Boom	118-3949	3	E-3
CylinderGp-Bucket	134-6987	4	E-3
CylinderGp-Stick	123-2082	5	E-7
FilterGp-CaseDrain	126-2075	6	A-6
FilterGp-Pilot	4I-3741	7	A-3
FilterGp-Return	107-6995	8	A-5
MotorGp-Swing	176-5104	9	F-6
MotorGp-Travel(Left)	107-7029	10	F-5
MotorGp-Travel(Right)	107-7029	11	F-4
SensorAs-Pressure	106-0178	12	B-2
SwitchAs-BoomRaisePressure	106-0180	13	C-6
SwitchAs-Implement/SwingPressure	106-0179	14	D-4
SwitchAs-TravelPressure	106-0179	15	D-4
TankGp-Hydraulic	118-4113	16	A-5
ValveAs-BypassCheck	094-6526	17	A-6
ValveGp-Check	184-3831	18	A-6
ValveGp-CushionCrossoverRif	116-3420	19	E-6
ValveGp-FlowControl	111-1141	20	B-6
ValveGp-HydraulicActivationControl	107-7058	21	A-6
ValveGp-MainControl	154-0529	22	D-2
ValveGp-Pilot	123-2419	23	D-2
ValveGp-PilotControl(Bucket/Boom)	176-4985	24	B-3
ValveGp-PilotControl(Swing/Stick)	176-4986	25	B-6
ValveGp-PilotControlTravel	123-2148	26	B-7
ValveGp-PilotOilManifold	111-9950	27	B-5
ValveGp-StickDriftReduction	155-7067	28	D-5
ValveGp-TravelBrake(Left)	137-3718	29	E-5
ValveGp-TravelBrake(Right)	137-3718	30	E-4

TAP LOCATION



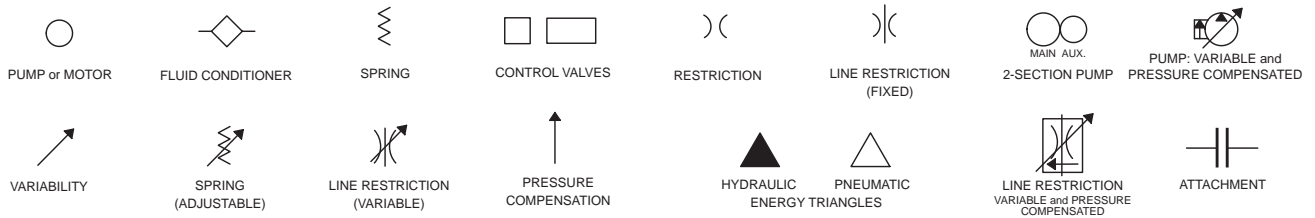
Tap Number	Description	Schematic Location
AA	Drive Pump Powershift Pressure	A-2
BB	Idler Pump Powershift Pressure	B-1
CC	Idler Pump Delivery Pressure	B-1
DD	Drive Pump Delivery Pressure	A-1
SOS	Hydraulic Oil Sampling Port	A-3

SchematicCat.com

FLUID POWER SYMBOLS



BASIC COMPONENT SYMBOLS



VALVE ENVELOPES

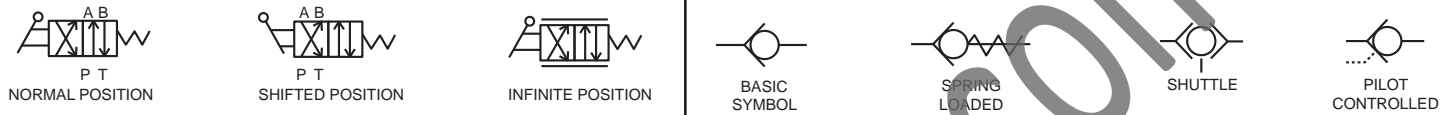
VALVES

VALVE PORTS



CONTROL VALVES

CHECK VALVES



FLUID STORAGE RESERVOIRS



MEASUREMENT

ROTATING SHAFTS



COMBINATION CONTROLS



MANUAL CONTROL SYMBOLS



RELEASED PRESSURE

PILOT CONTROL SYMBOLS

REMOTE SUPPLY PRESSURE



ACCUMULATORS

CROSSING AND JOINING LINES

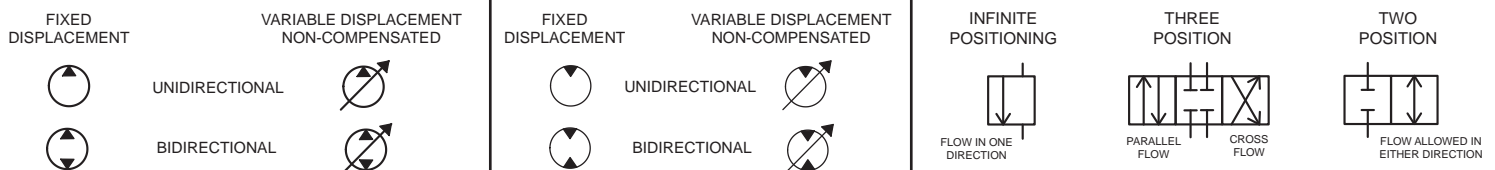
HYDRAULIC AND PNEUMATIC CYLINDERS



HYDRAULIC PUMPS

HYDRAULIC MOTORS

INTERNAL PASSAGEWAYS



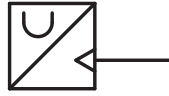
ELECTRICAL SYMBOLS



Hydraulic Symbols (Electrical)



Transducer
(Fluid)



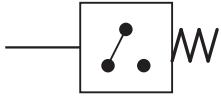
Transducer
(Gas / Air)



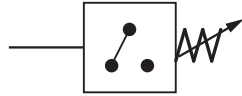
Generator



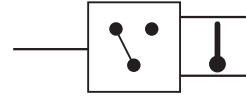
Electric Motor



Pressure Switch



Pressure Switch
(Adjustable)

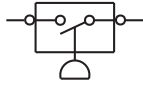


Temperature Switch

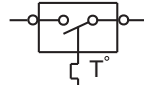


Electrical Wire

Electrical Symbols (Electrical)



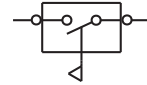
Pressure
Symbol



Temperature
Symbol



Level
Symbol

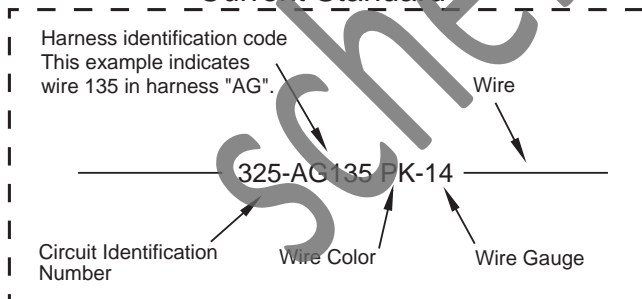


Flow
Symbol

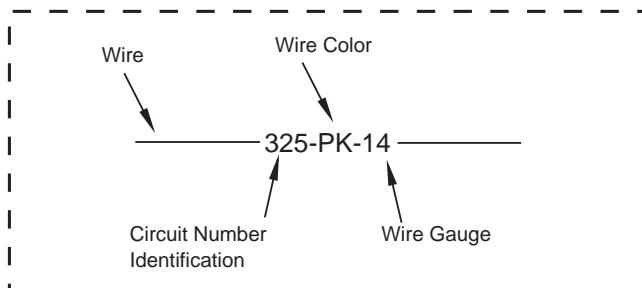
Wire Number Identification Codes

Electrical Schematic Example

Current Standard

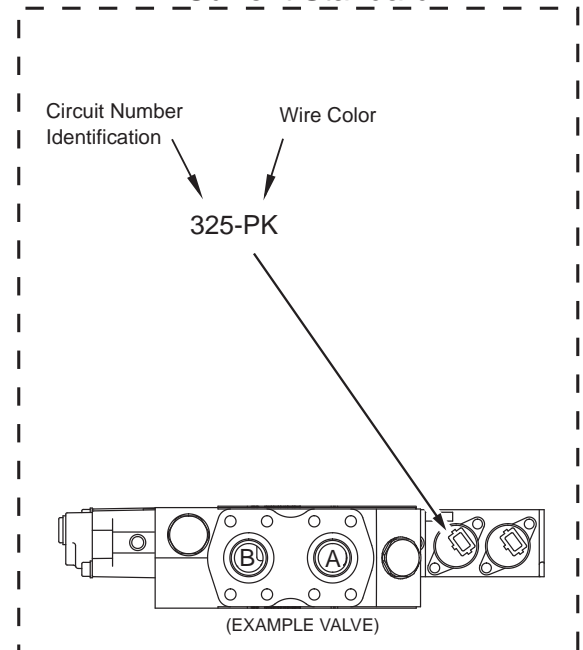


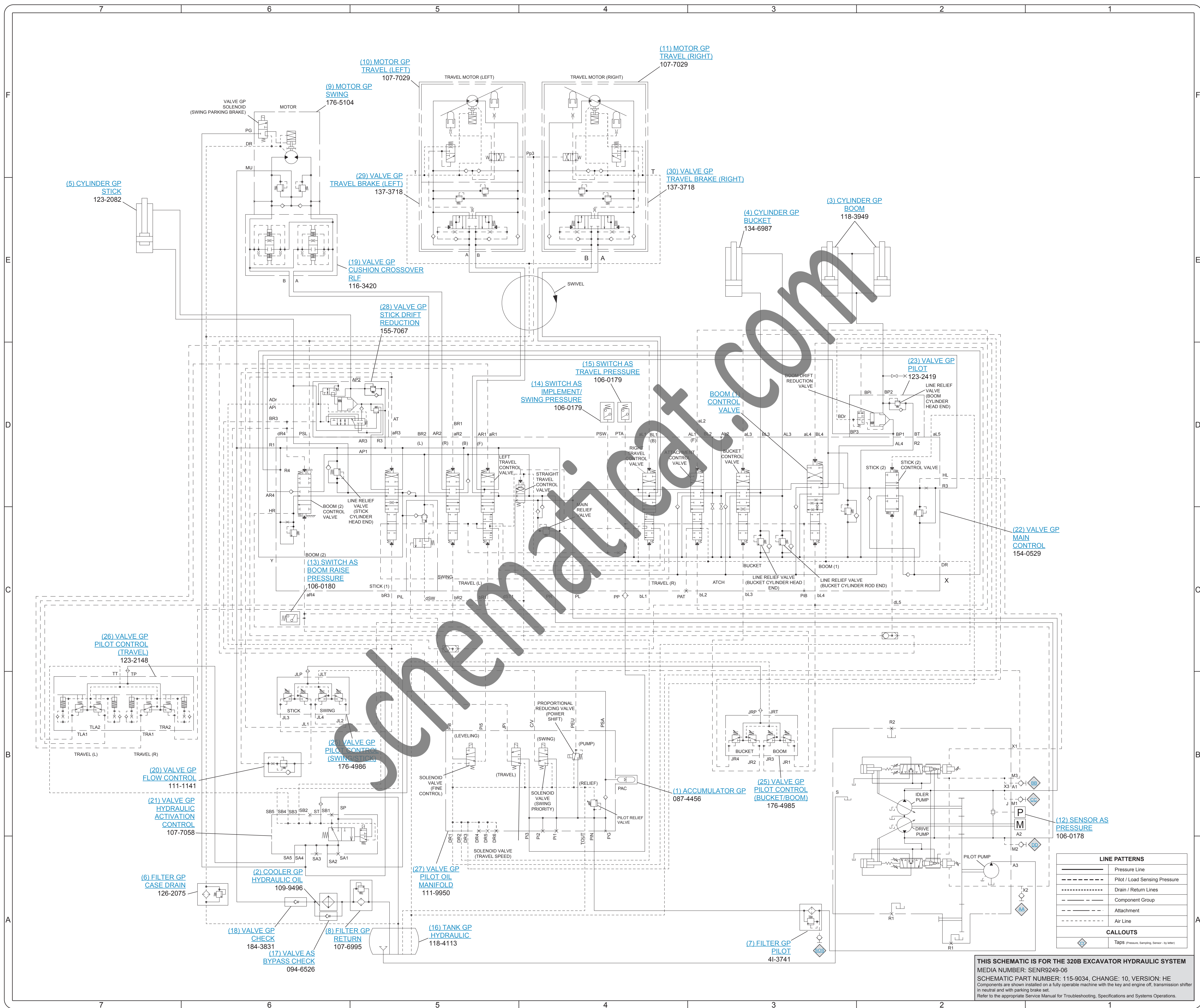
Previous Standard



Hydraulic Schematic Example

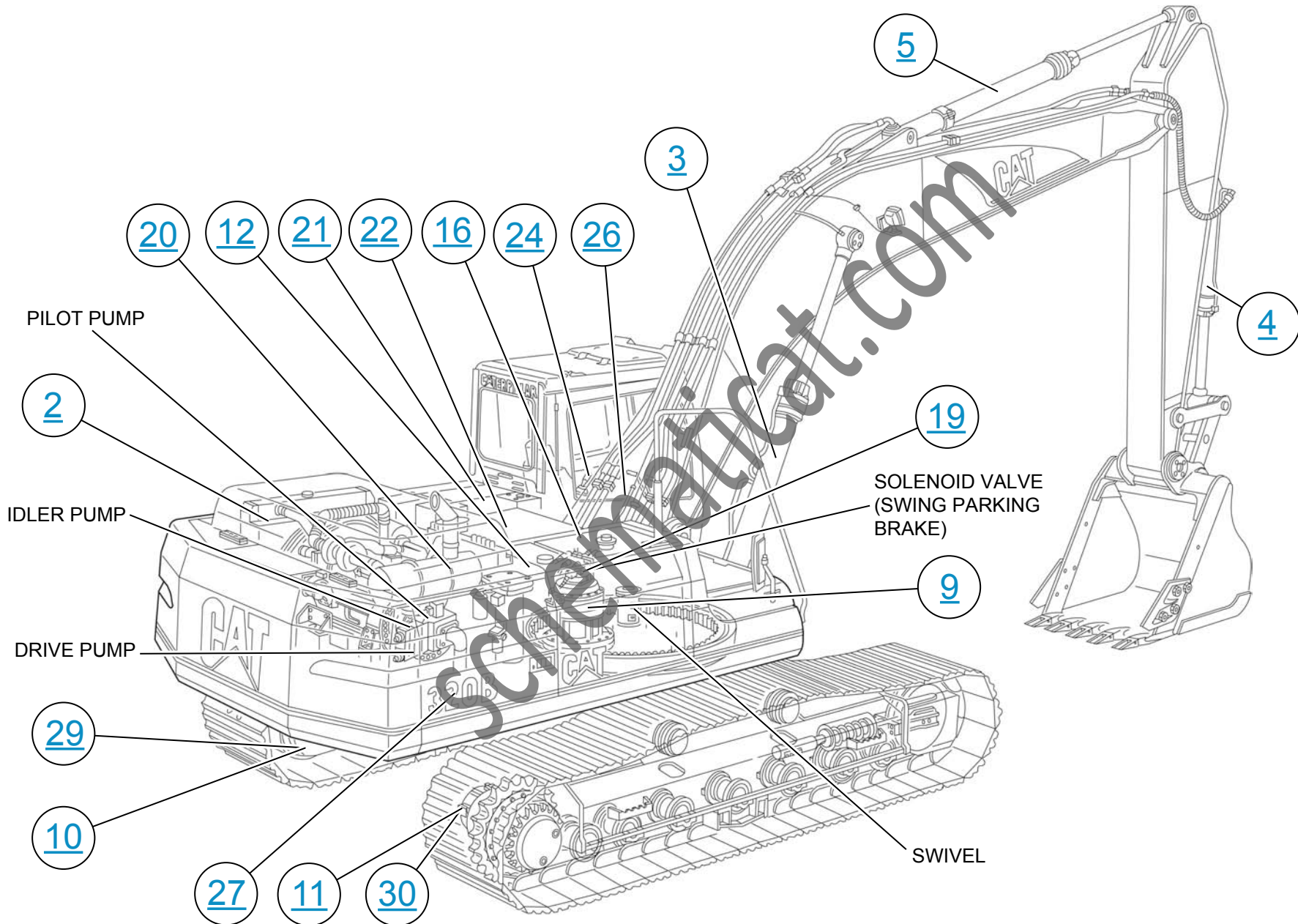
Current Standard



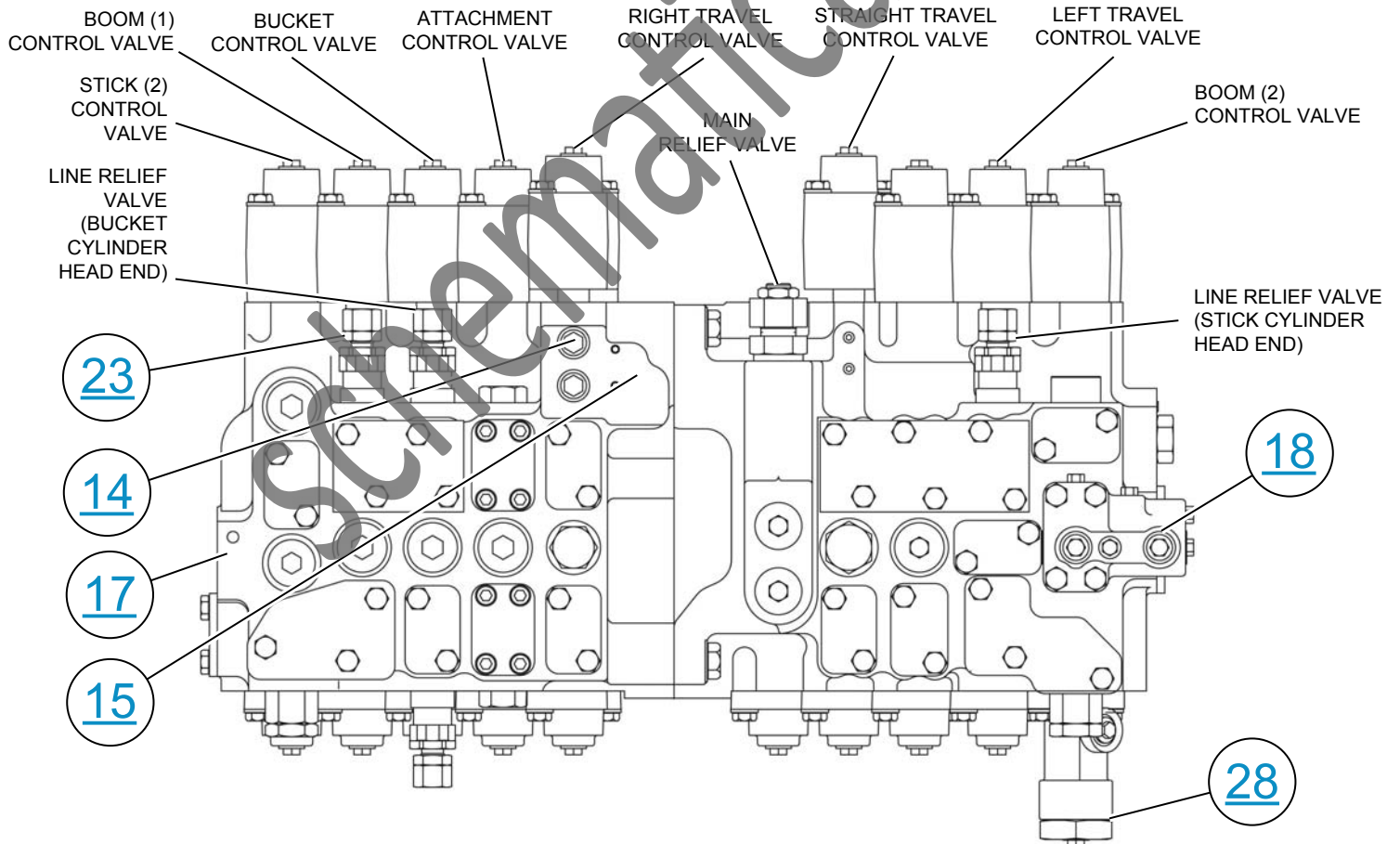
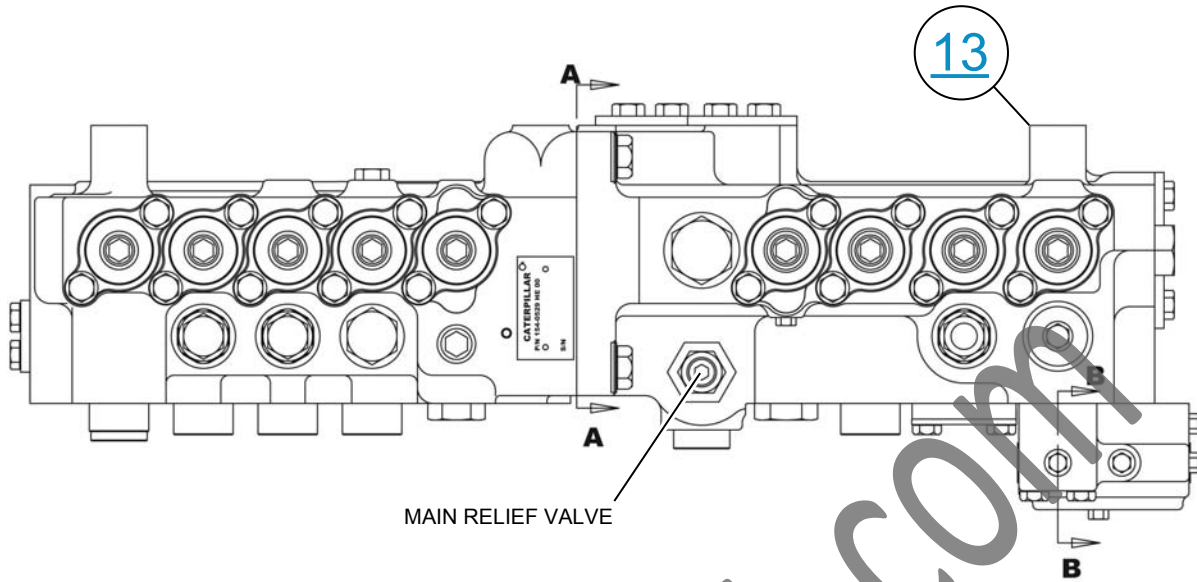


THIS SCHEMATIC IS FOR THE 320B EXCAVATOR HYDRAULIC SYSTEM
 MEDIA NUMBER: SENR9249-06
 SCHEMATIC PART NUMBER: 115-9034, CHANGE: 10, VERSION: HE
 Components are shown installed on a fully operable machine with the key and engine off, transmission shifter in neutral and with parking brake set.
 Refer to the appropriate Service Manual for Troubleshooting, Specifications and Systems Operations.

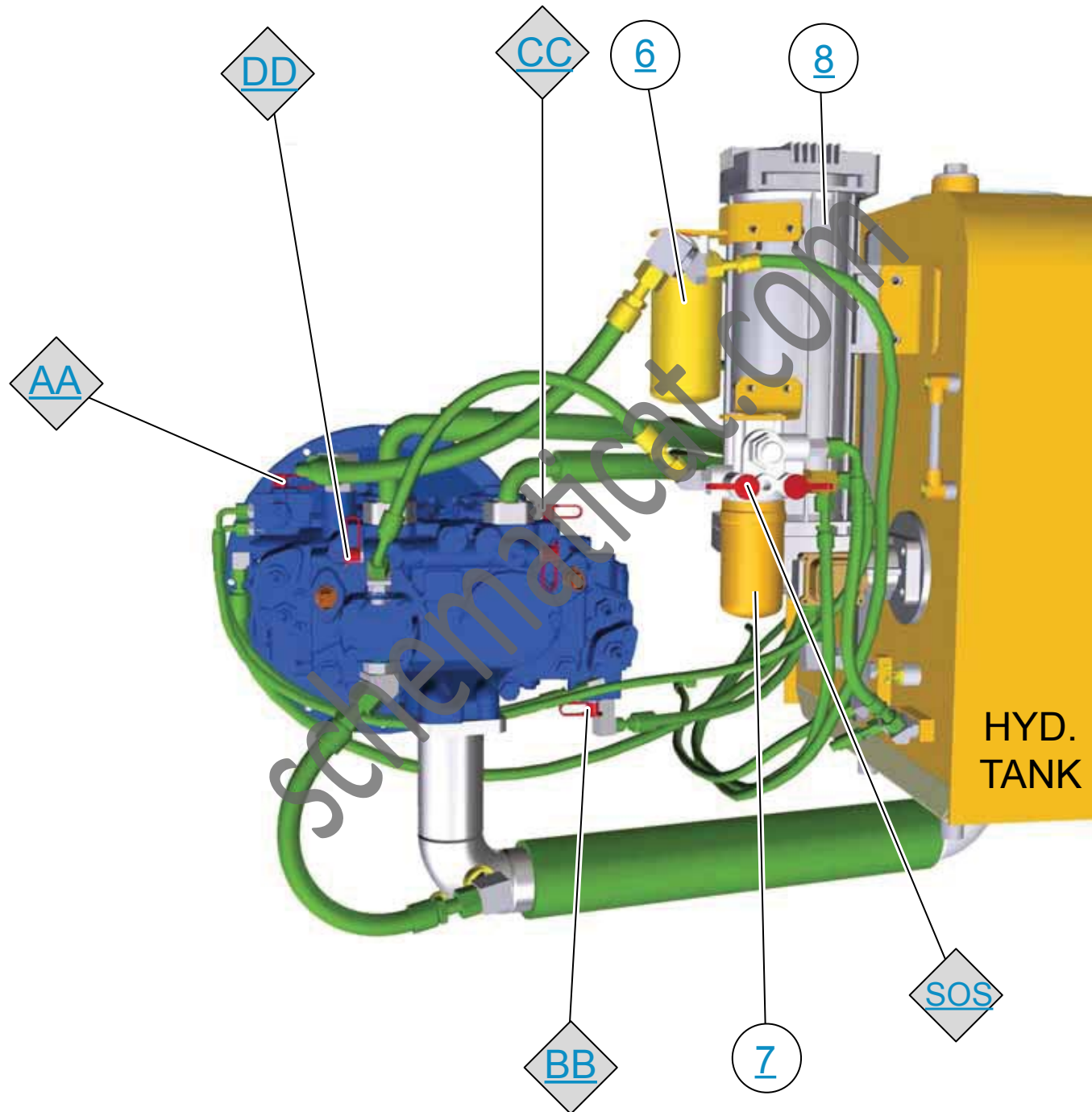
MACHINE COMPONENT LOCATIONS



MAIN CONTROL VALVE



PUMP GP - MAIN HYDRAULIC



PILOT MANIFOLD

