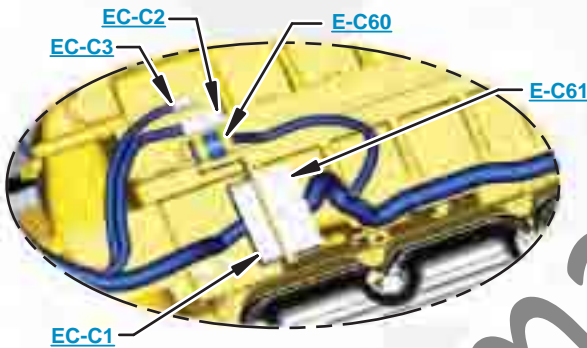


This document is best viewed at a screen resolution of 1024 X 768.

To set your screen resolution do the following:
RIGHT CLICK on the **DESKTOP**.
 Select **PROPERTIES**.
CLICK the **SETTINGS TAB**.
MOVE THE SLIDER under **SCREEN RESOLUTION** until it shows **1024 X 768**.
CLICK OK to apply the resolution.

The Bookmarks panel will allow you to quickly navigate to points of interest.



Click on any text that is BLUE and underlined. These are hyperlinks that can be used to navigate the schematic and machine views.

VIEW ALL CALLOUTS

When only one callout is showing on a machine view this button will make all of the callouts visible. This button is located in the top right corner of every machine view page.

HOTKEYS (Keyboard Shortcuts)		
	FUNCTION	KEYS
	Zoom In	"CTRL" / "+"
	Zoom Out	"CTRL" / "-"
	Fit to Page	"CTRL" / "0" (zero)
	Hand Tool	"SPACEBAR" (hold down)
	Find	"CTRL" / "F"



Schematic

320C Excavator Hydraulic System - Attachment

**ANB1-UP
MAB1-UP
PAB1-UP
AMC1-UP
BDC1-UP
EAG1-UP
GNG1-UP
SBN1-UP
BER1-UP
HKT1-UP
RAW1-UP**

SchematicCat.com

System 3: One Way/Two Pump Flow/Foot Switch

COMPONENT LOCATION



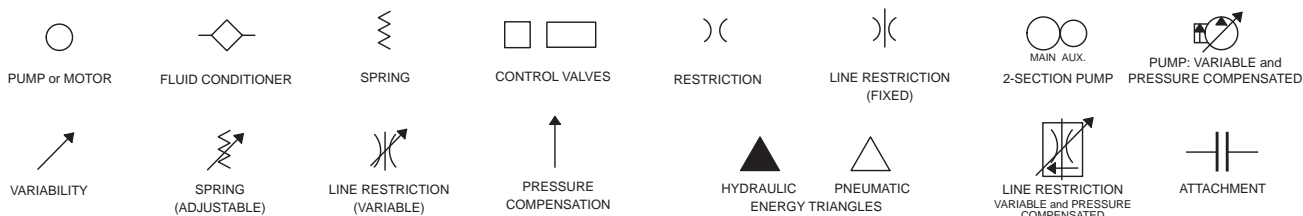
Description	Part Number	Machine Location	Schematic Location
Valve Gp - Attachment Control	153-5242	1	C-6
Valve Gp - Line Relief (One Way Flow)	165-9629	2	D-3
Valve Gp - Line Relief (Work Tool)	116-3600	3	E-5
Valve Gp - Negative Flow Control Relief	109-2667	4	C-6
Valve Gp - Solenoid (Work Tool)	121-1491	5	E-7
Valve Gp - Solenoid Proportional Reducing (Negative Flow Control)	171-0188	6	C-1

SchematicCat.com

FLUID POWER SYMBOLS



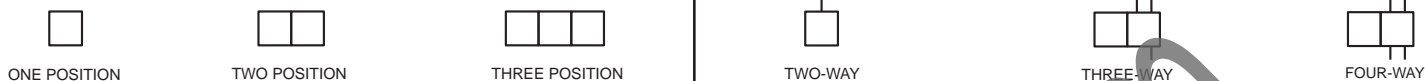
BASIC COMPONENT SYMBOLS



VALVE ENVELOPES

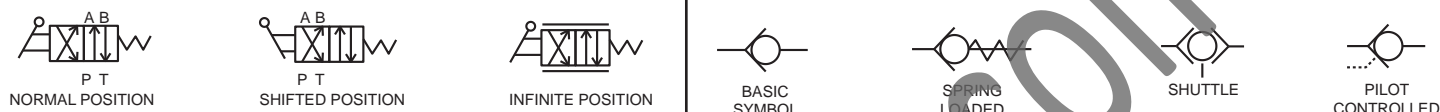
VALVES

VALVE PORTS



CONTROL VALVES

CHECK VALVES



FLUID STORAGE RESERVOIRS



MEASUREMENT

ROTATING SHAFTS



COMBINATION CONTROLS



MANUAL CONTROL SYMBOLS



RELEASED PRESSURE

PILOT CONTROL SYMBOLS

REMOTE SUPPLY PRESSURE



ACCUMULATORS

CROSSING AND JOINING LINES

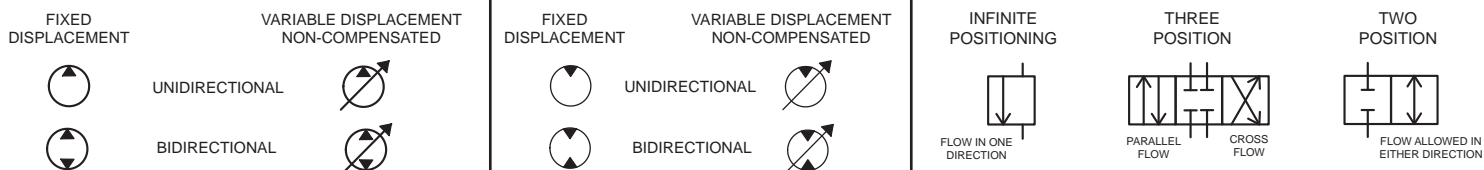
HYDRAULIC AND PNEUMATIC CYLINDERS



HYDRAULIC PUMPS

HYDRAULIC MOTORS

INTERNAL PASSAGEWAYS



ELECTRICAL SYMBOLS



Hydraulic Symbols (Electrical)



Transducer
(Fluid)



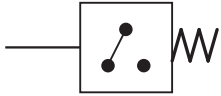
Transducer
(Gas / Air)



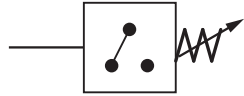
Generator



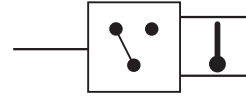
Electric Motor



Pressure Switch



Pressure Switch
(Adjustable)

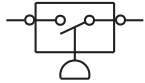


Temperature Switch

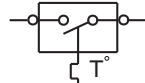


Electrical Wire

Electrical Symbols (Electrical)



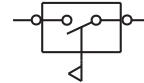
Pressure
Symbol



Temperature
Symbol



Level
Symbol

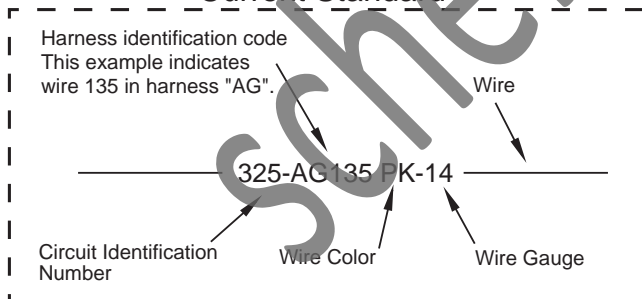


Flow
Symbol

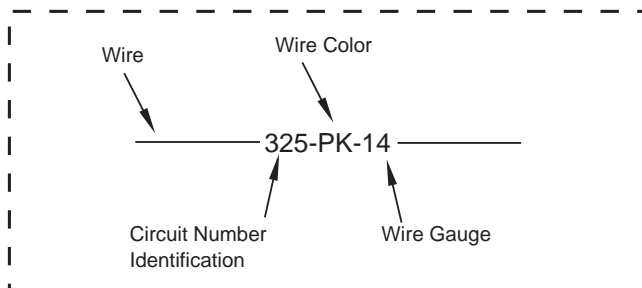
Wire Number Identification Codes

Electrical Schematic Example

Current Standard

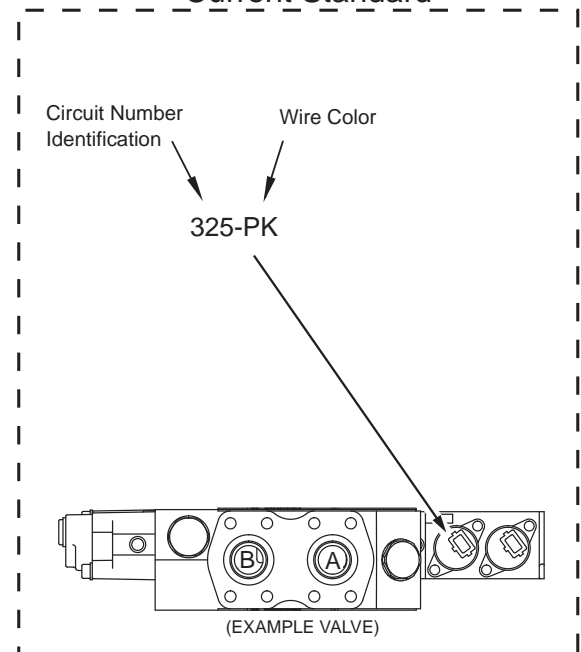


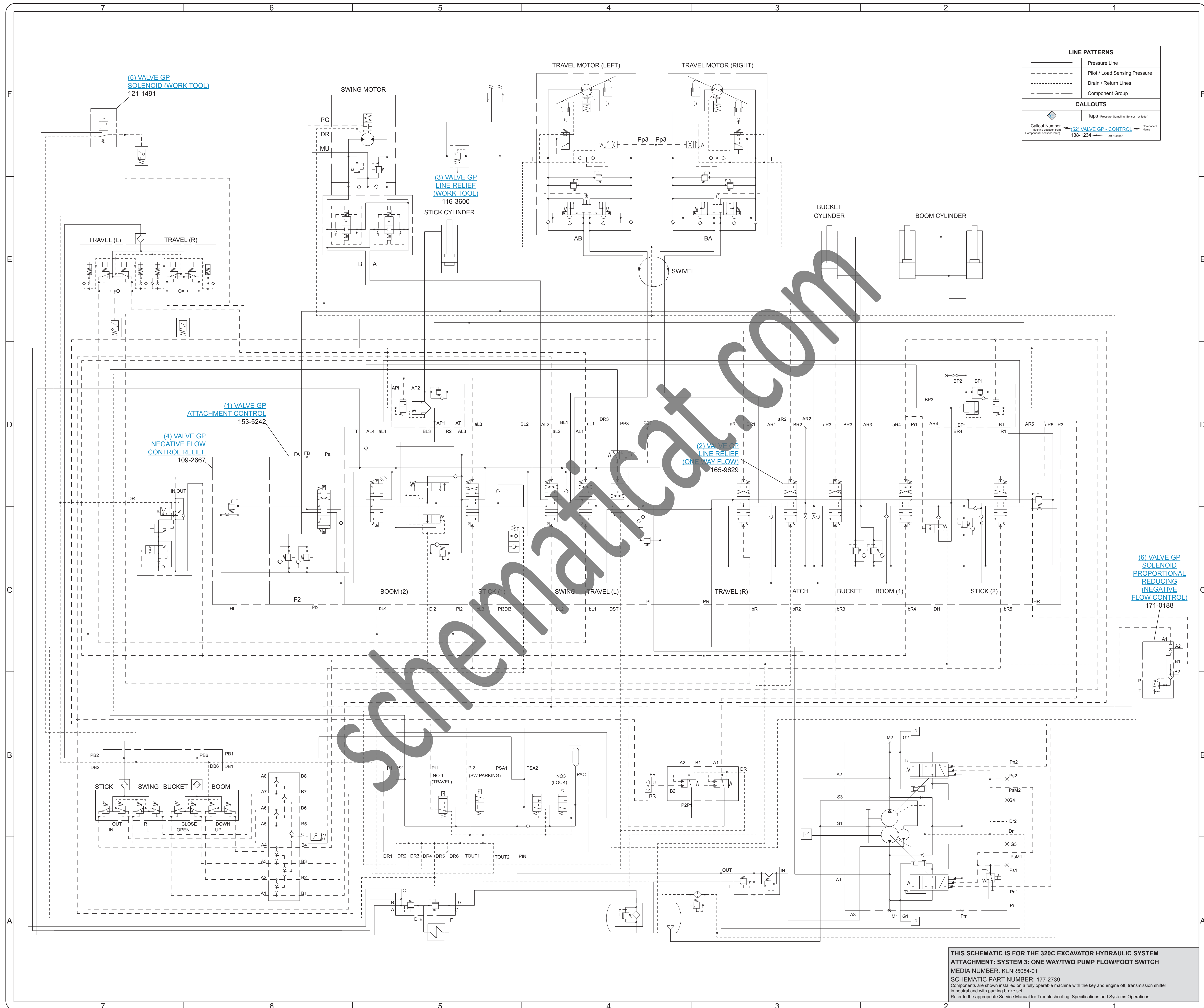
Previous Standard



Hydraulic Schematic Example

Current Standard





LINE PATTERNS	
	Pressure Line
	Pilot / Load Sensing Pressure
	Drain / Return Lines
	Component Group

CALLOUTS	
	TapS (Pressure Sensing Sensor - by letter)
	Callout Number Machine Location from Component Location (S/N)
	(52) VALVE GP - CONTROL 138-1234 ← Part Number
	Component Name

THIS SCHEMATIC IS FOR THE 320C EXCAVATOR HYDRAULIC SYSTEM ATTACHMENT: SYSTEM 3: ONE WAY/TWO PUMP FLOW/FOOT SWITCH
 MEDIA NUMBER: KENR5084-01
 SCHEMATIC PART NUMBER: 177-2739
 Components are shown installed on a fully operable machine with the key and engine off, transmission shifter in neutral and with parking brake set.
 Refer to the appropriate Service Manual for Troubleshooting, Specifications and Systems Operations.

MACHINE COMPONENT LOCATIONS

