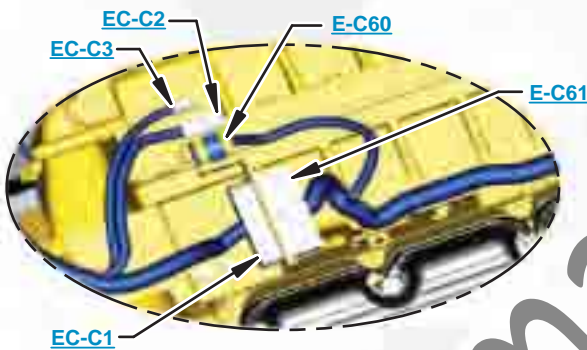


This document is best viewed at a screen resolution of 1024 X 768.

To set your screen resolution do the following:
RIGHT CLICK on the **DESKTOP**.
 Select **PROPERTIES**.
CLICK the **SETTINGS TAB**.
MOVE THE SLIDER under **SCREEN RESOLUTION** until it shows **1024 X 768**.
CLICK OK to apply the resolution.

The Bookmarks panel will allow you to quickly navigate to points of interest.



Click on any text that is BLUE and underlined. These are hyperlinks that can be used to navigate the schematic and machine views.

VIEW ALL CALLOUTS

When only one callout is showing on a machine view this button will make all of the callouts visible. This button is located in the top right corner of every machine view page.

HOTKEYS (Keyboard Shortcuts)		
	FUNCTION	KEYS
	Zoom In	"CTRL" / "+"
	Zoom Out	"CTRL" / "-"
	Fit to Page	"CTRL" / "0" (zero)
	Hand Tool	"SPACEBAR" (hold down)
	Find	"CTRL" / "F"



Schematic

330D, 336D, and 336D₂ Excavator Hydraulic System - Attachment

330D:

GBC1-UP
GGE1-UP
THJ1-UP
LRM1-UP
ERN1-UP
RAS1-UP
T2Y1-UP

336D:

J2F1-UP
JBF1-UP
PRF1-UP
LMG1-UP
MYG1-UP
KDJ1-UP
W3K1-UP
WRK1-UP
PPN1-UP
MYP1-UP
JWR1-UP
DTS1-UP
KKT1-UP
WET1-UP
PGW1-UP

336D₂:

XBH1-UP
FAR1-UP
TLY1-UP

Stick Lowering Control Valve

COMPONENT LOCATION



Description	Part Number	Machine Location	Schematic Location
Attachment			
Block	201-9379	1	D-5
Valve Gp - Load Control (Stick Lowering, Drift Reduction, Relief)	263-1962	2	E-6
Standard 330D with Heavy Lift and Fine Swing			
Accumulator Gp - Hydraulic (Charged)	164-6981	3	B-4
Block	201-9379	4	D-2
Cylinder Gp - Boom	NOTE A	5	F-2
Cylinder Gp - Bucket	NOTE A	6	F-7
Cylinder Gp - Stick	NOTE A	7	F-7
Filter & Valve Gp - Pilot (Hydraulic Oil)	158-8987	8	A-4
Filter Gp - Oil (Hydraulic Return)	188-4140	9	A-6
Filter Gp - Oil (Hydraulic, Case Drain)	126-2075	10	A-4
Manifold Gp - Control (Pilot Oil)	215-8987	11	B-6
Motor Gp - Piston (Fan)	234-4638	12	A-7
Motor Gp - Swing	200-3373	13	F-5
Motor Gp - Travel	Left Right 271-6376	14 15	F-5 F-3
Pump Gp - Piston (Hydraulic Fan)	259-0815	16	B-3
Pump Gp - Piston (with Pilot Gear Pump)	283-6116	17	B-2
Swivel Gp	234-4440	18	E-4
Valve Gp - Check (Oil Cooler Bypass) (Control Valve)	190-7745	19	A-7
Valve Gp - Main Control	285-1536	20	C-1
Valve Gp - Pilot (Joystick, LH)	270-5951	21	C-7
Valve Gp - Pilot (Joystick, RH)	270-5947	22	C-6
Valve Gp - Pilot (Travel)	270-5947	23	D-7
Valve Gp - Pressure Reducing (Boom, Swing Priority)	234-4102	24	B-4
Valve Gp - Shuttle	185-0462 259-7732	25 26	B-6 B-4
Valve Gp - Solenoid (Heavy Lift)	121-6303	27	A-4
Valve Gp - Swing Cushion (Fine Swing)	158-9085	28	E-5
Valve Gp - Travel Counterbalance	Left Right 204-2819	29 30	E-5 E-3
Boom Lowering Control Valve			
Valve Gp - Load Control (Boom Lowering, Drift Reduction, Relief)	Left Right 255-5683	40 41	E-3 E-1
Valve Gp - Manual (Boom Lower)	270-5692	42	E-2

Note A: Refer to Parts Manual for your specific machine.

TAP LOCATION



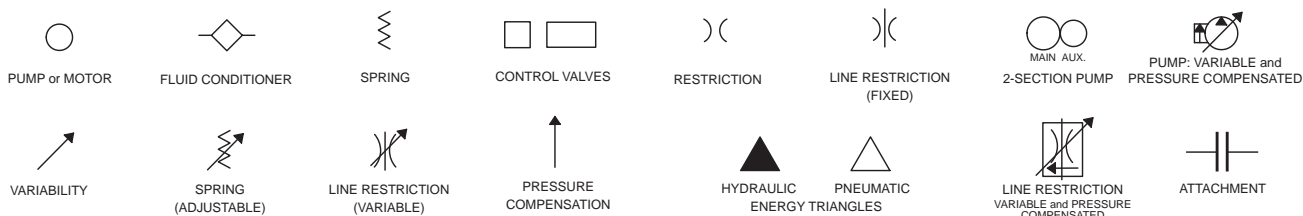
Tap Number	Description	Schematic Location
<u>AA</u>	Pilot Filter Pressure Test Port	<u>A-4</u>
<u>BB</u>	Drive Pump Pressure Test Port	<u>B-2</u>
<u>CC</u>	Power Shift Pressure Test Port	<u>A-2</u>
<u>DD</u>	Idler Pump Pressure Test Port	<u>A-2</u>
<u>SOS</u>	Hydraulic Oil Sampling Port	<u>A-4</u>

SchematicCat.com

FLUID POWER SYMBOLS



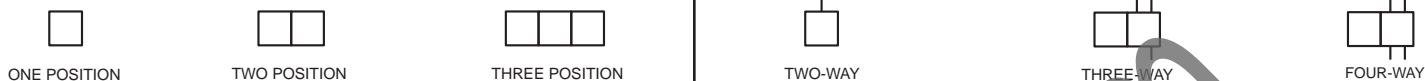
BASIC COMPONENT SYMBOLS



VALVE ENVELOPES

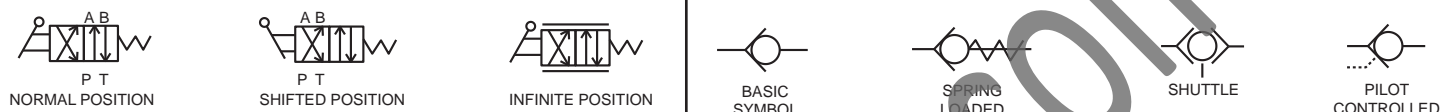
VALVES

VALVE PORTS



CONTROL VALVES

CHECK VALVES



FLUID STORAGE RESERVOIRS



MEASUREMENT

ROTATING SHAFTS



COMBINATION CONTROLS



MANUAL CONTROL SYMBOLS



RELEASED PRESSURE

PILOT CONTROL SYMBOLS

REMOTE SUPPLY PRESSURE



ACCUMULATORS

CROSSING AND JOINING LINES

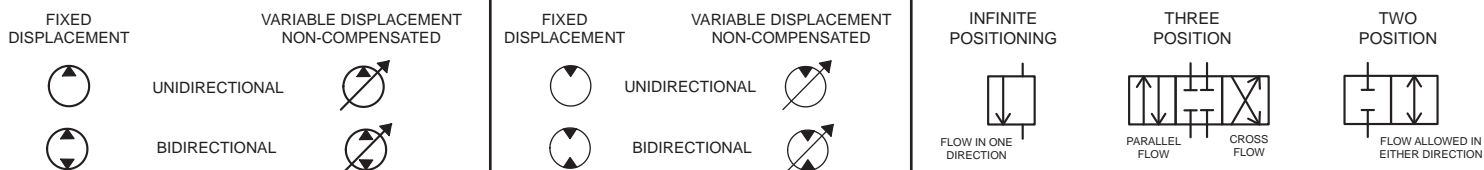
HYDRAULIC AND PNEUMATIC CYLINDERS



HYDRAULIC PUMPS

HYDRAULIC MOTORS

INTERNAL PASSAGEWAYS



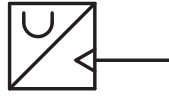
ELECTRICAL SYMBOLS



Hydraulic Symbols (Electrical)



Transducer
(Fluid)



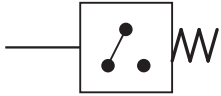
Transducer
(Gas / Air)



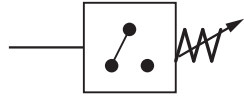
Generator



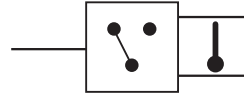
Electric Motor



Pressure Switch



Pressure Switch
(Adjustable)

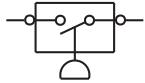


Temperature Switch

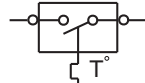


Electrical Wire

Electrical Symbols (Electrical)



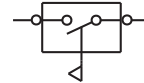
Pressure
Symbol



Temperature
Symbol



Level
Symbol

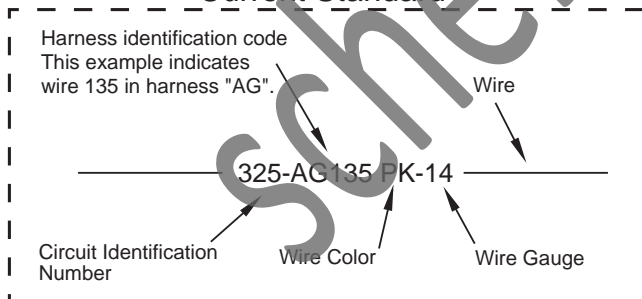


Flow
Symbol

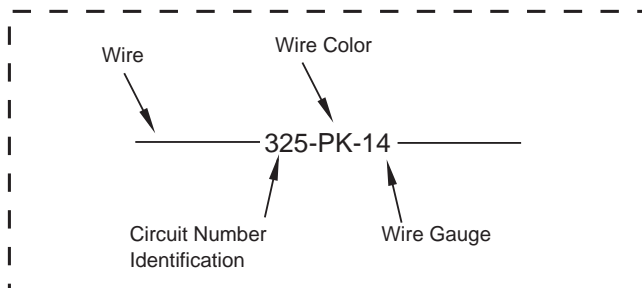
Wire Number Identification Codes

Electrical Schematic Example

Current Standard

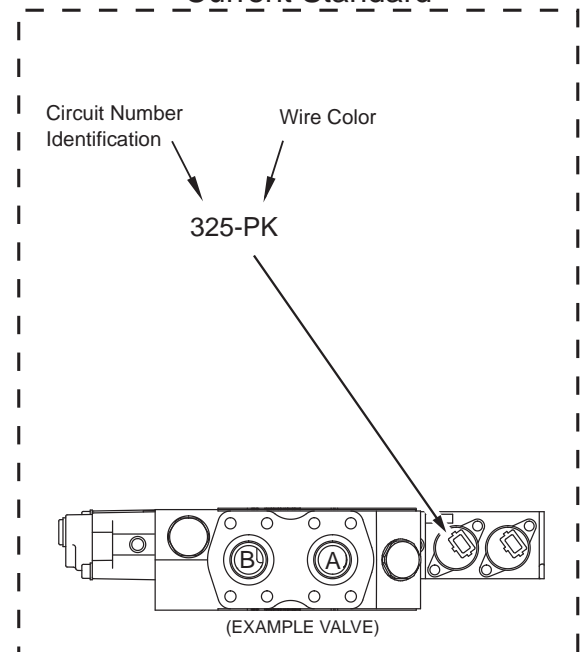


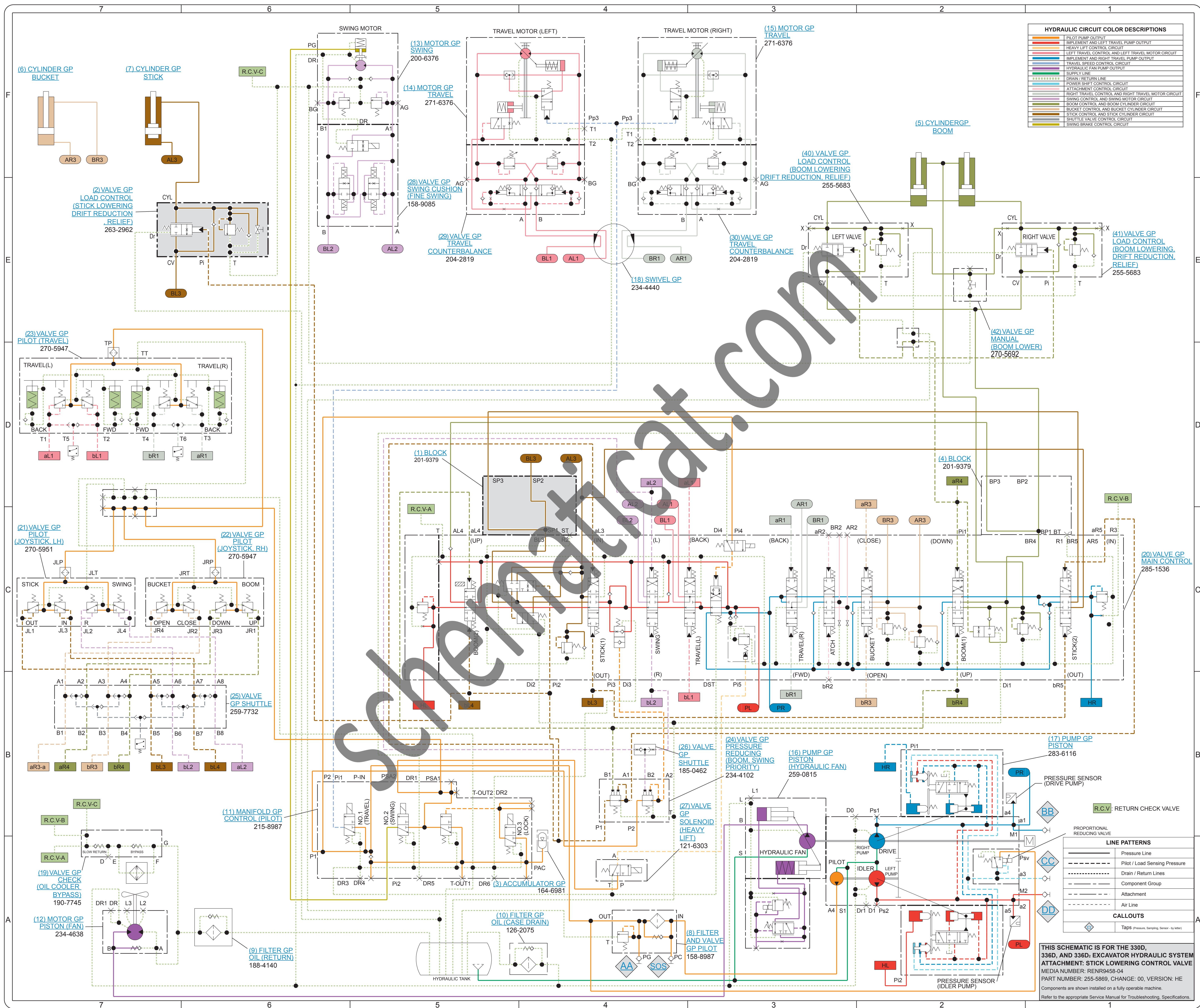
Previous Standard



Hydraulic Schematic Example

Current Standard





HYDRAULIC CIRCUIT COLOR DESCRIPTIONS

Orange	PILOT PUMP OUTPUT
Red	IMPLEMENT AND LEFT TRAVEL PUMP OUTPUT
Light Red	HEAVY LIFT CONTROL CIRCUIT
Dark Red	LEFT TRAVEL CONTROL AND LEFT TRAVEL MOTOR CIRCUIT
Light Blue	IMPLEMENT AND RIGHT TRAVEL PUMP OUTPUT
Dark Blue	TRAVEL SPEED CONTROL CIRCUIT
Light Green	HYDRAULIC FAN PUMP OUTPUT
Light Purple	SUPPLY LINE
Light Yellow	DRAIN / RETURN LINE
Light Cyan	POWER SHIFT CONTROL CIRCUIT
Light Magenta	ATTACHMENT CONTROL CIRCUIT
Light Brown	RIGHT TRAVEL CONTROL AND RIGHT TRAVEL MOTOR CIRCUIT
Light Grey	SWING CONTROL AND SWING MOTOR CIRCUIT
Light Olive	BOOM CONTROL AND BOOM CYLINDER CIRCUIT
Light Teal	BUCKET CONTROL AND BUCKET CYLINDER CIRCUIT
Light Blue-Grey	STICK CONTROL AND STICK CYLINDER CIRCUIT
Light Yellow-Green	SHUTTLE VALVE CONTROL CIRCUIT
Light Green	SWING BRAKE CONTROL CIRCUIT

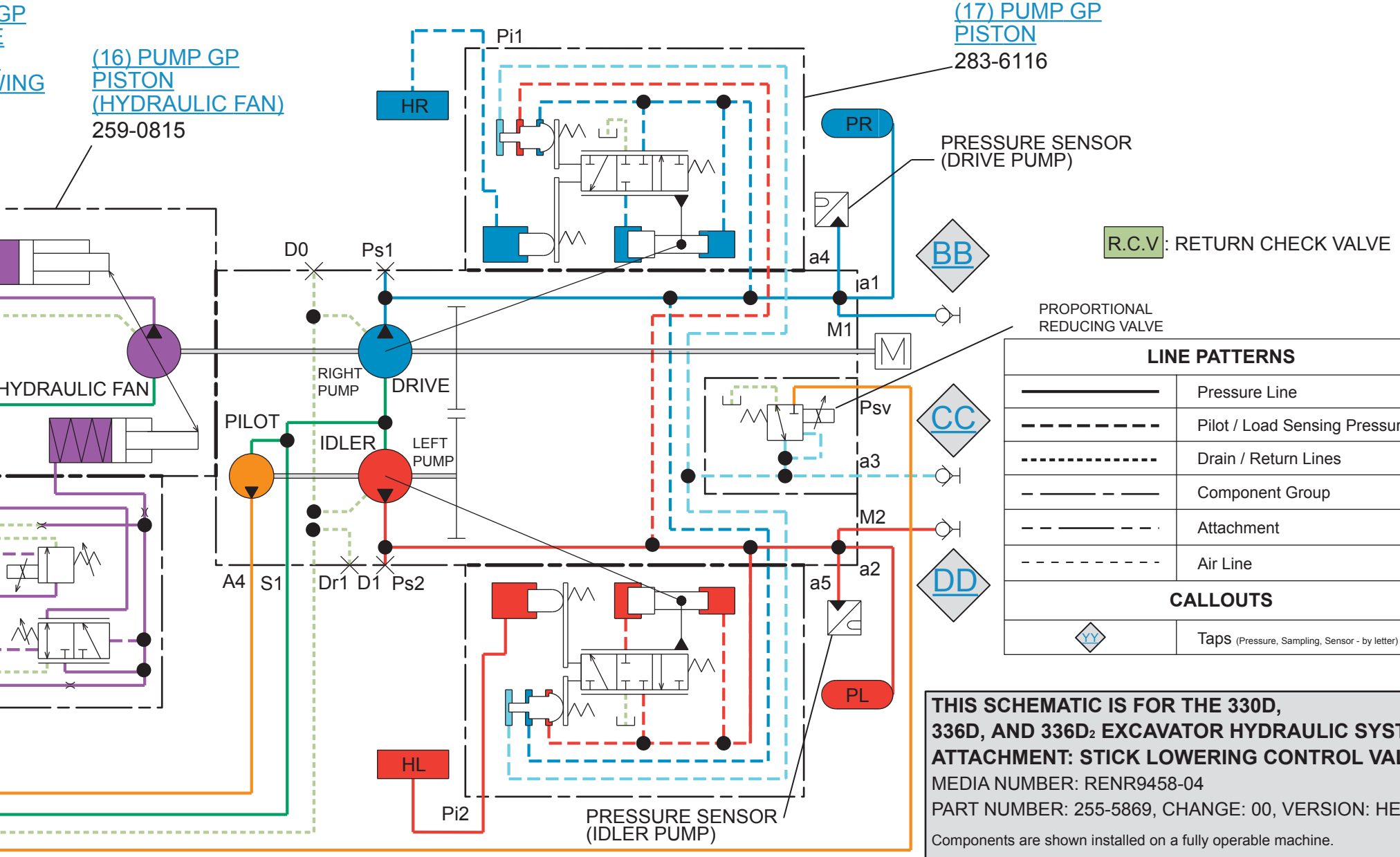
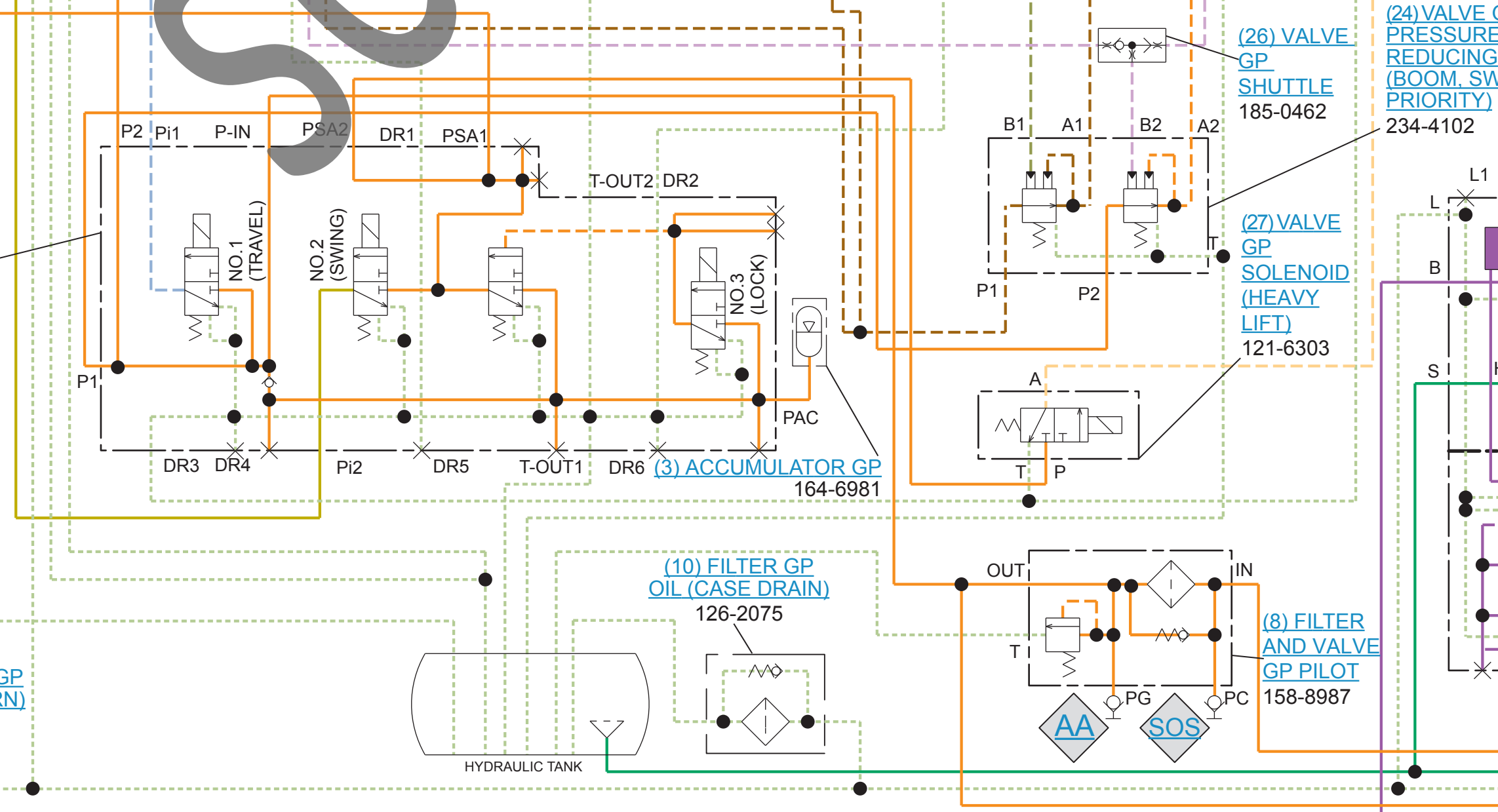
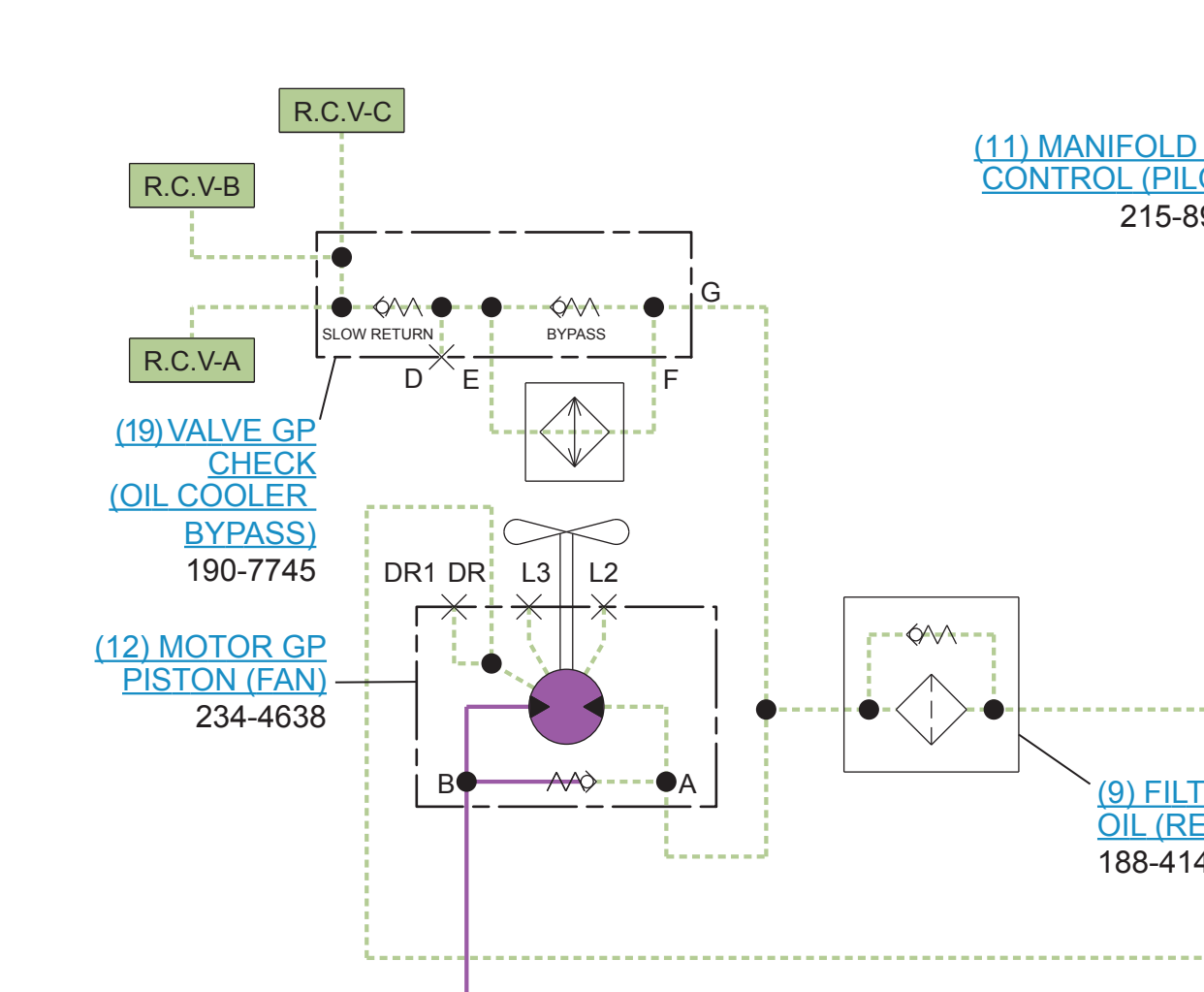
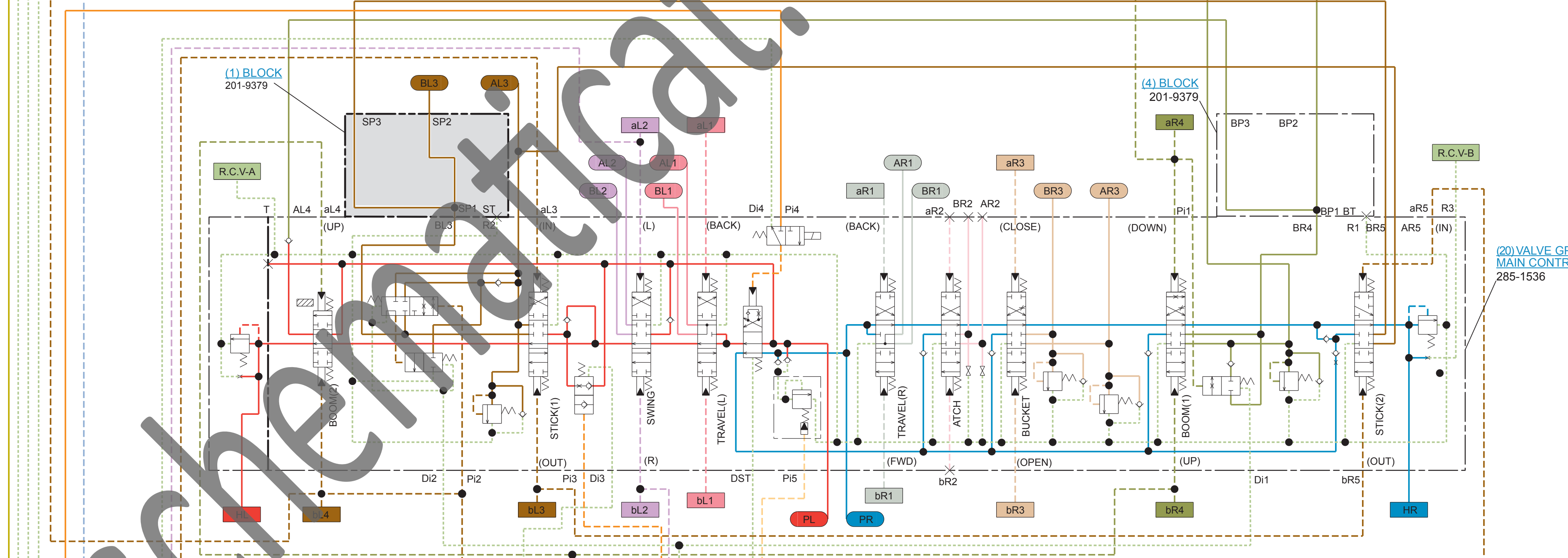
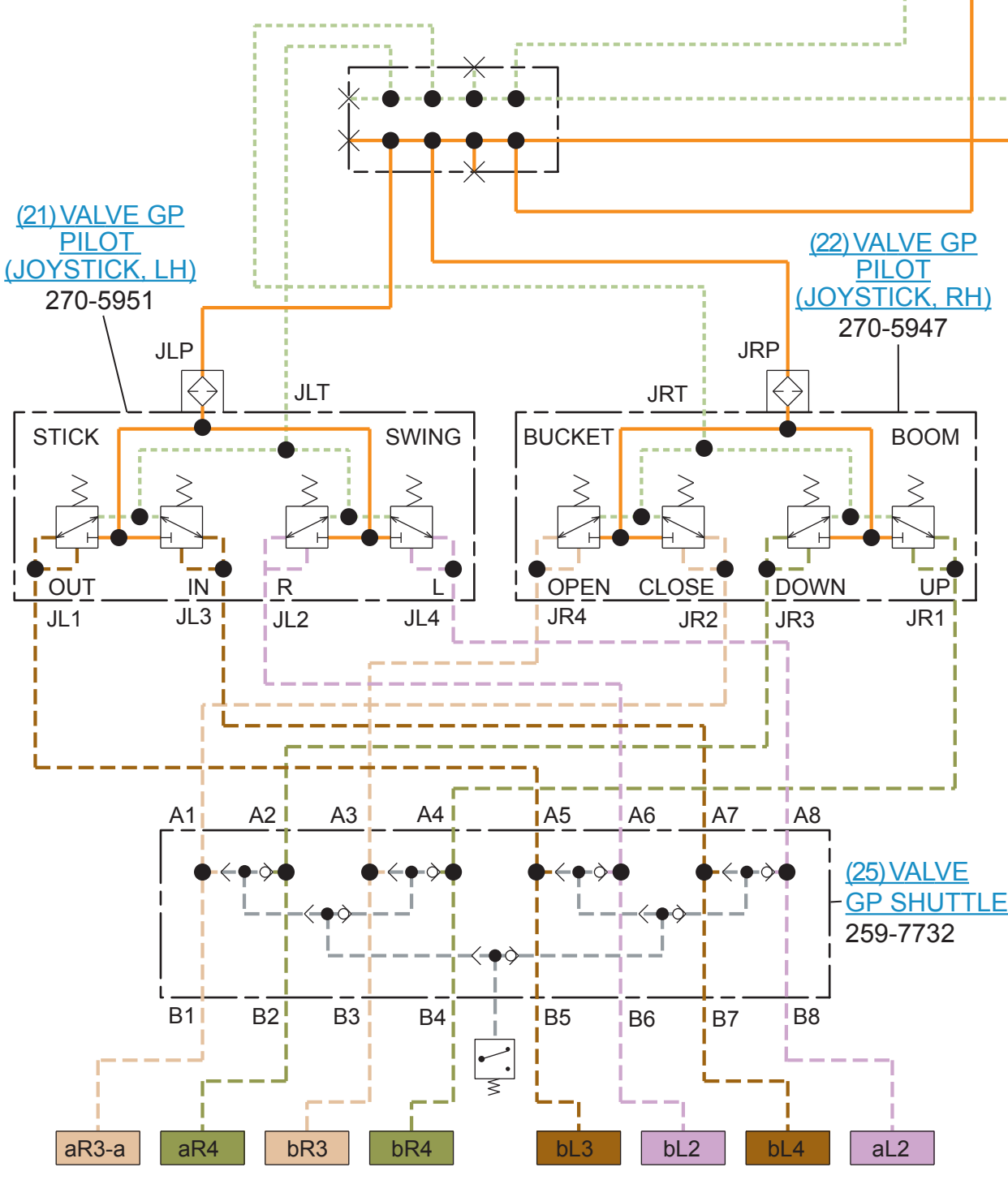
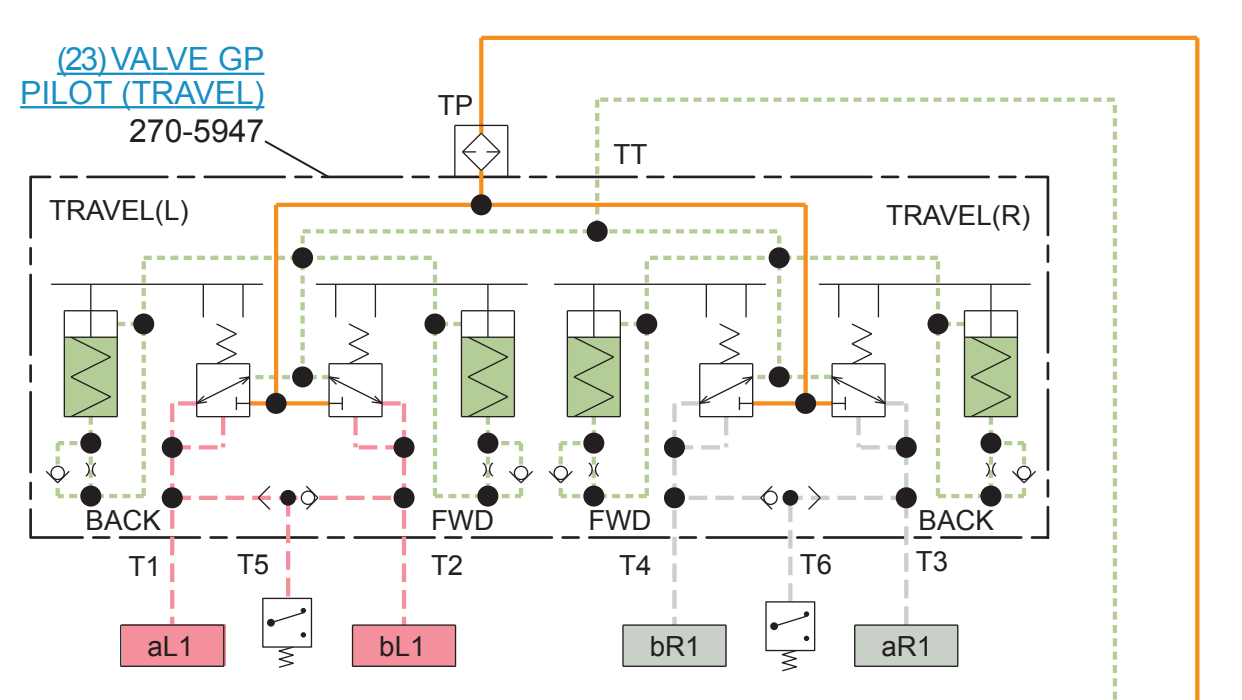
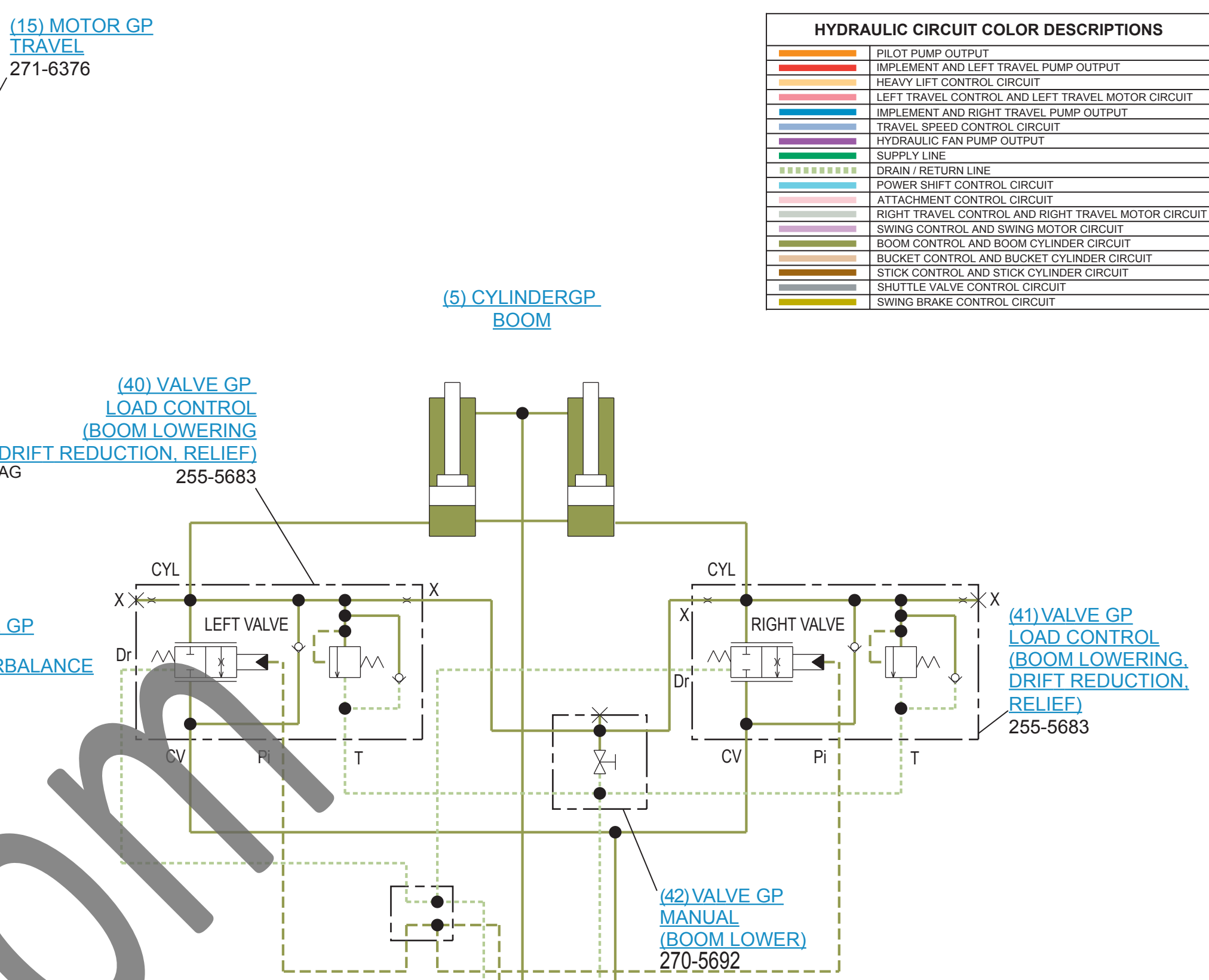
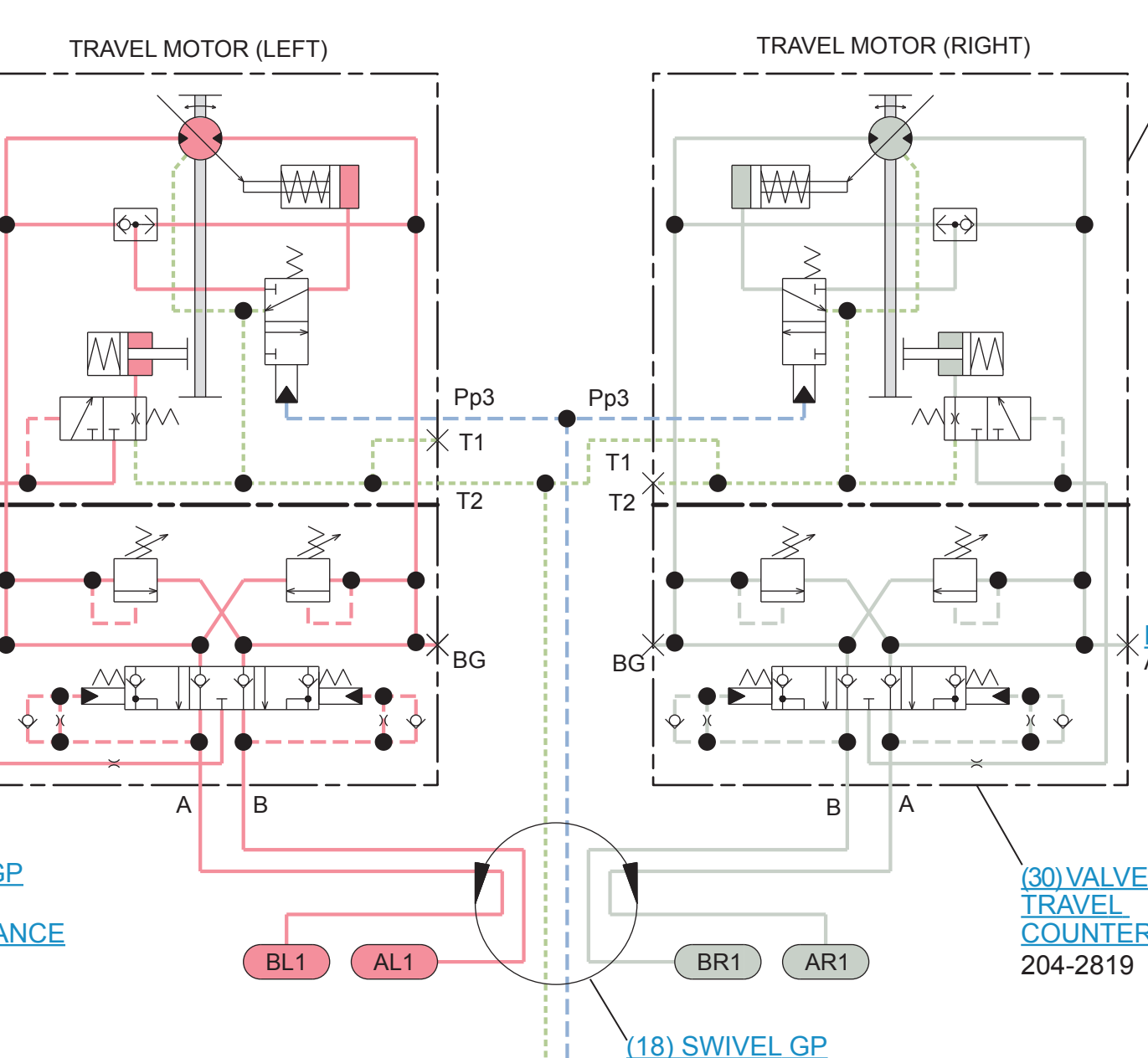
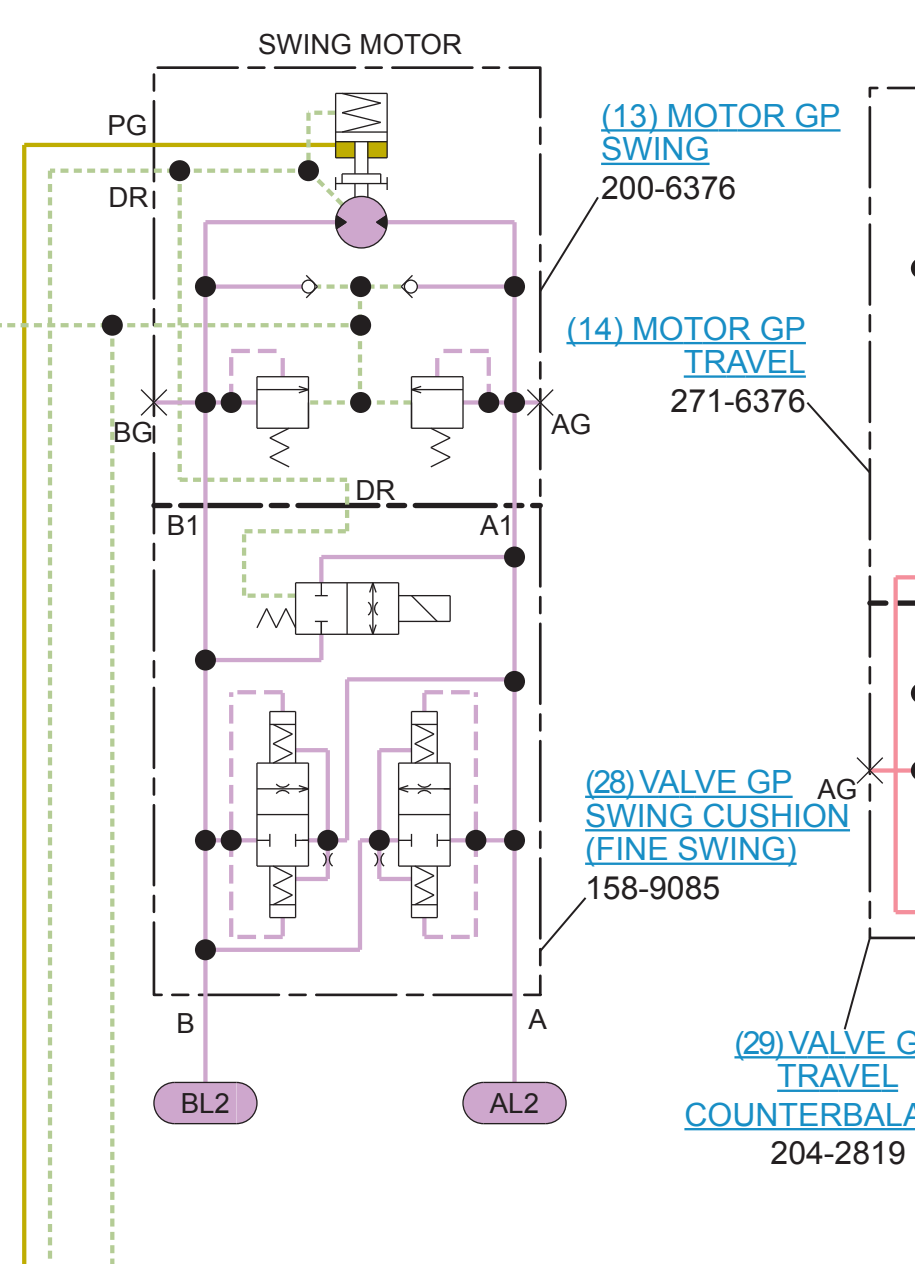
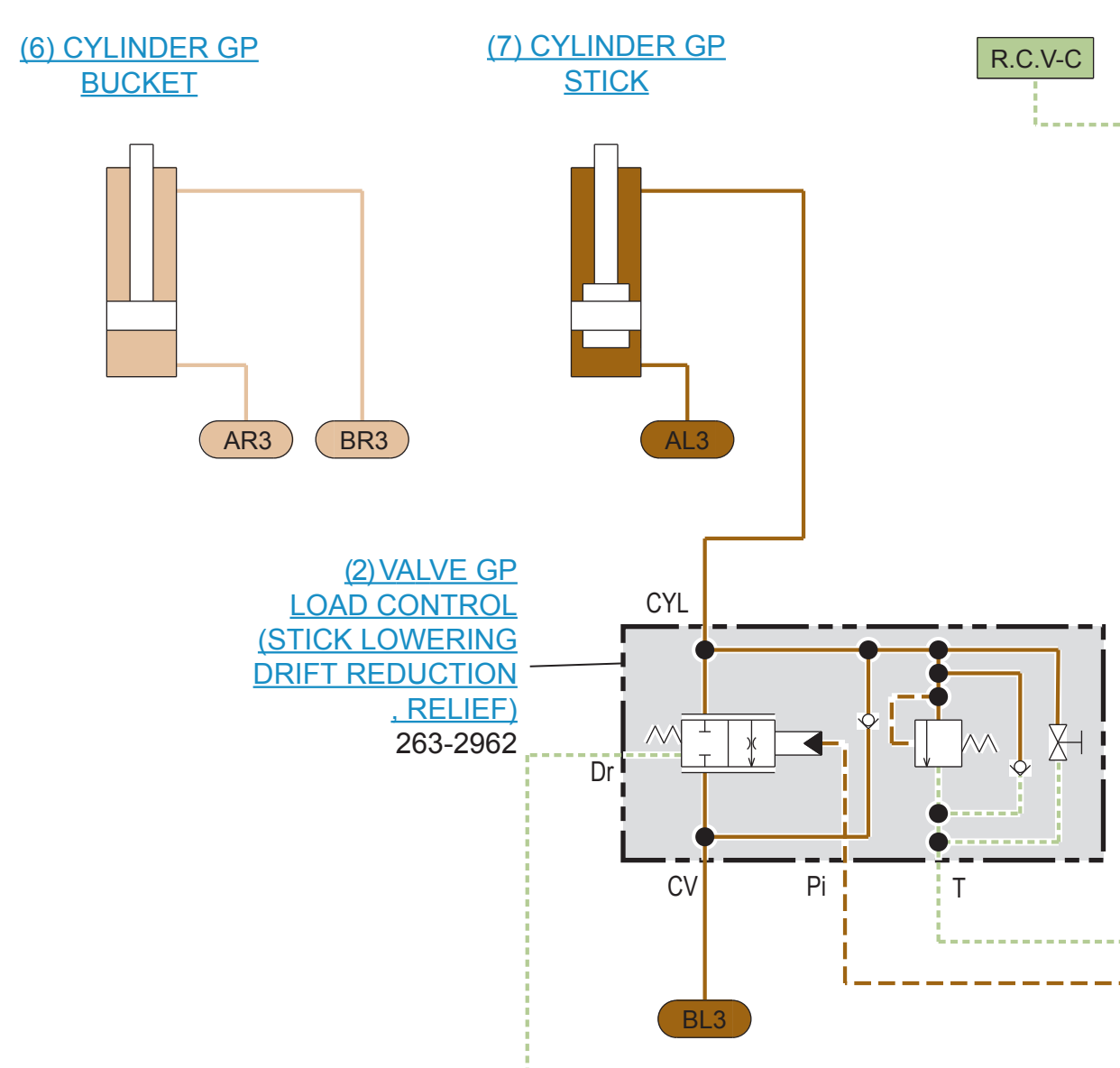
LINE PATTERNS

Orange line	Pressure Line
Red line	Pilot / Load Sensing Pressure
Light Red line	Drain / Return Lines
Dark Red line	Component Group
Light Blue line	Attachment
Dark Blue line	Air Line

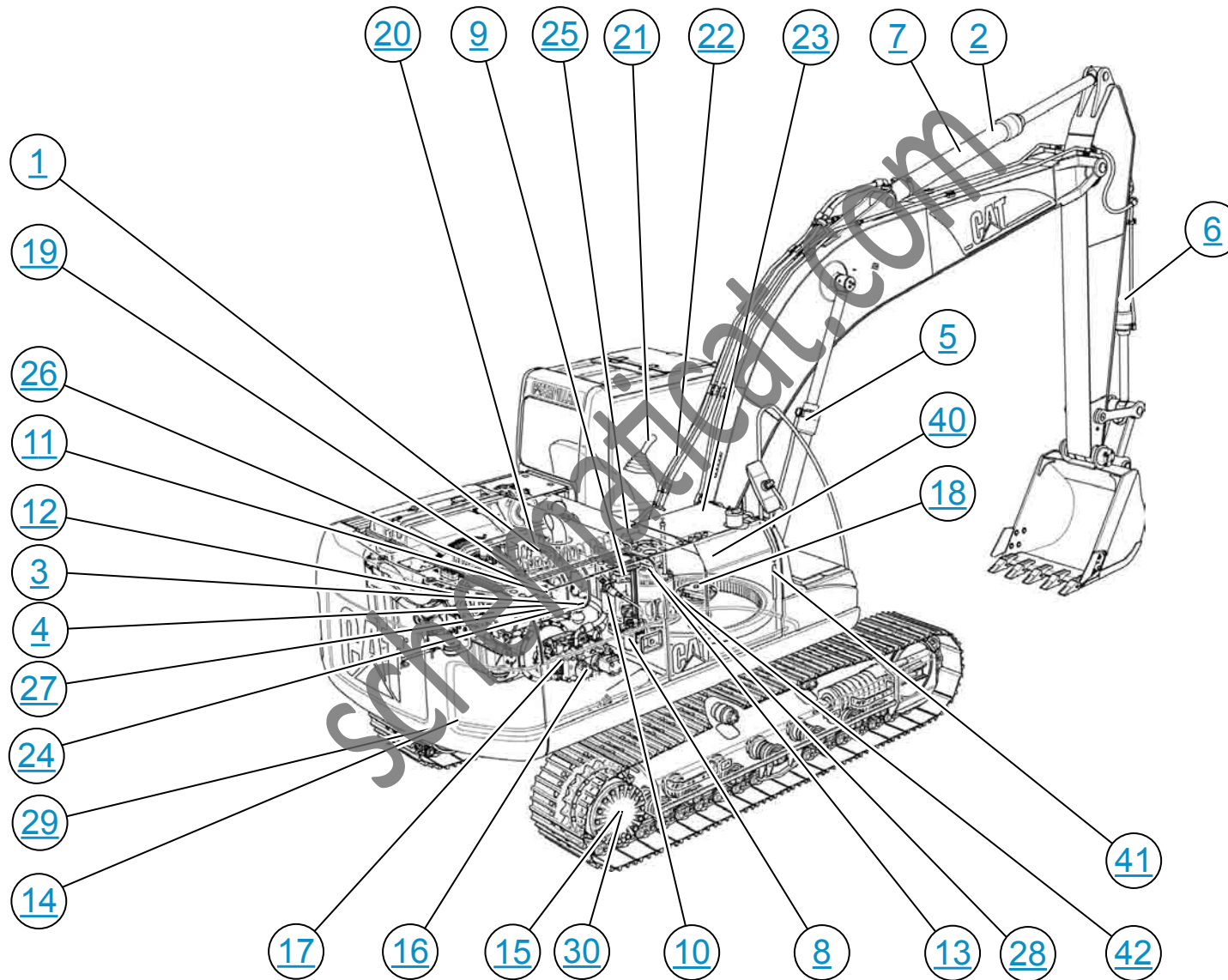
CALLOUTS

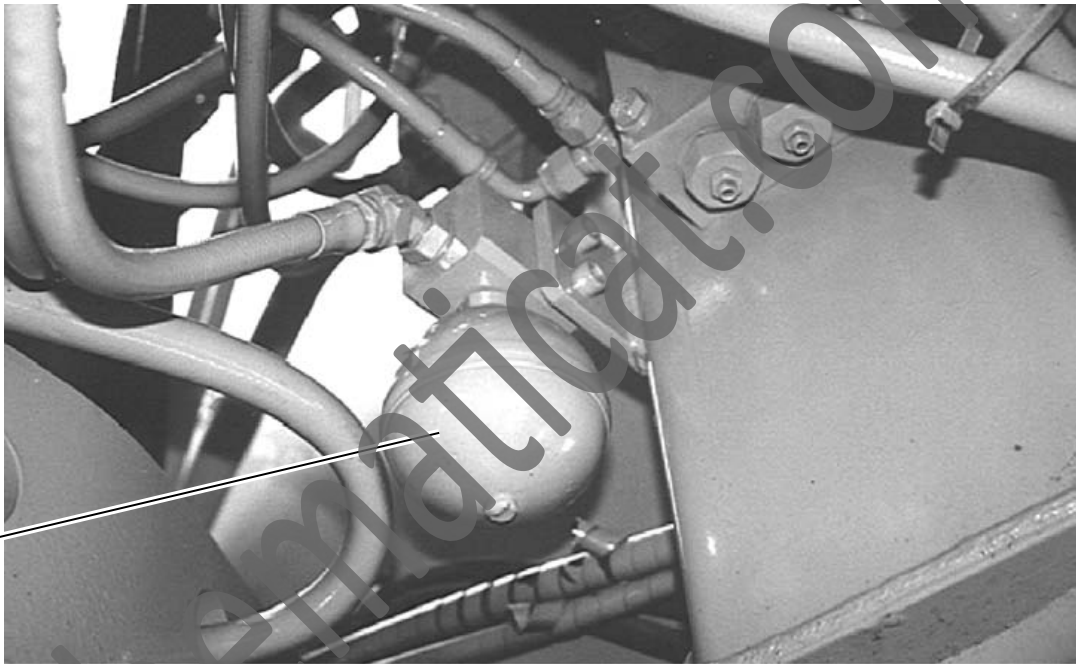
AA	Taps (Pressure, Sampling, Sensor - by letter)
----	---

THIS SCHEMATIC IS FOR THE 330D, 336D, AND 336D, EXCAVATOR HYDRAULIC SYSTEM ATTACHMENT: STICK LOWERING CONTROL VALVE MEDIA NUMBER: RENR6458-04 PART NUMBER: 255-5869, CHANGE: 00, VERSION: HE Components are shown installed on a fully operable machine. Refer to the appropriate Service Manual for Troubleshooting, Specifications.



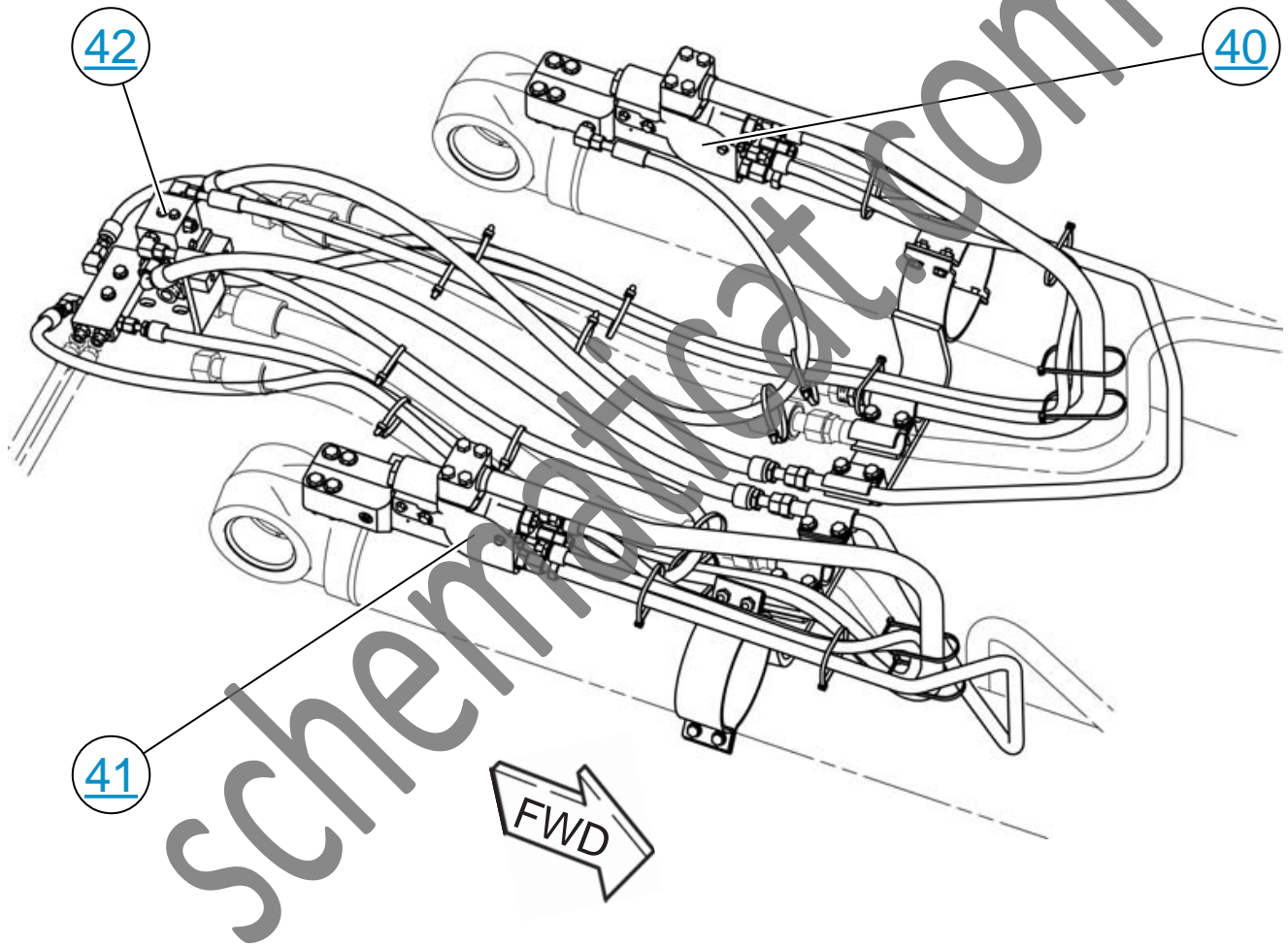
MACHINE COMPONENT LOCATIONS

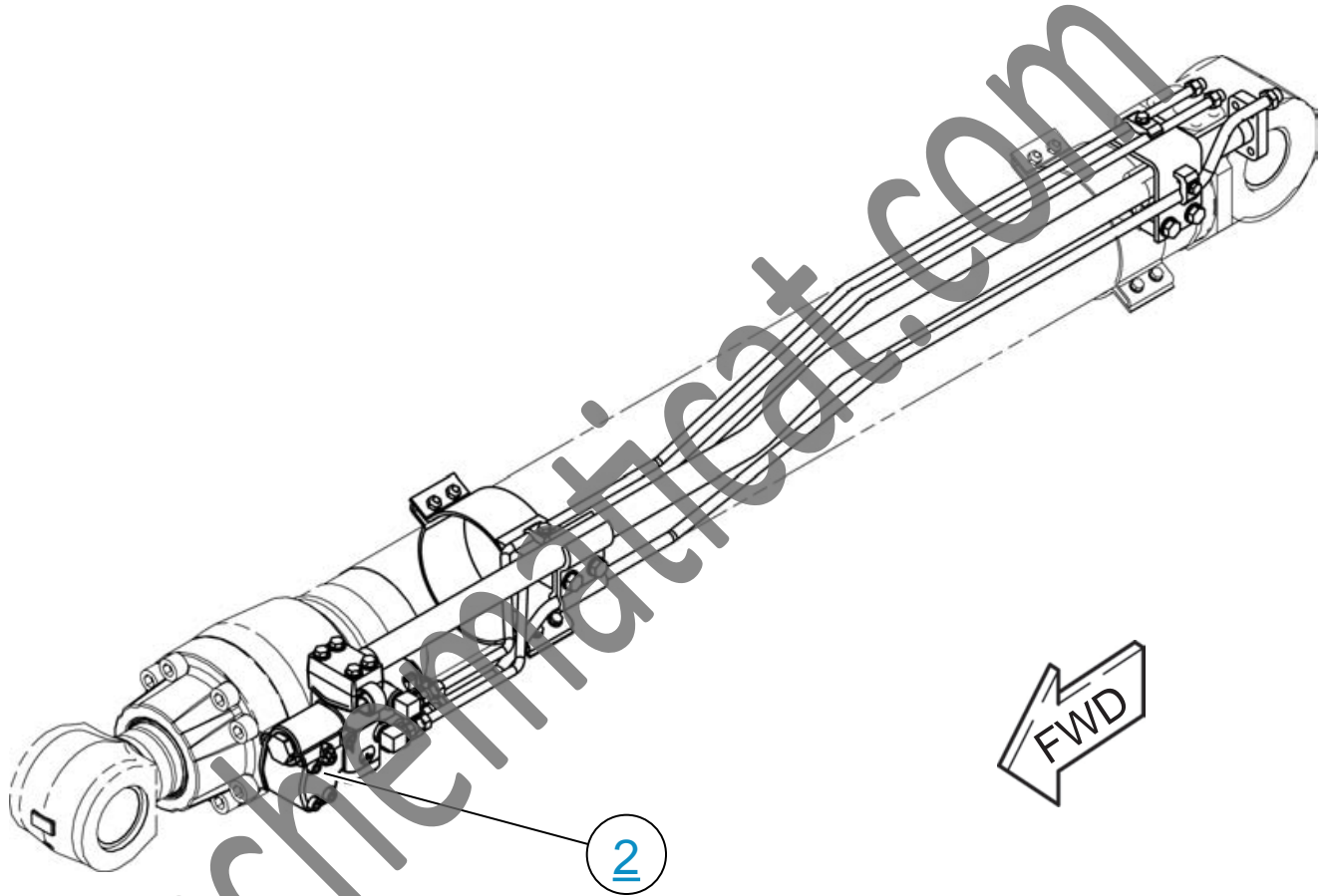




3

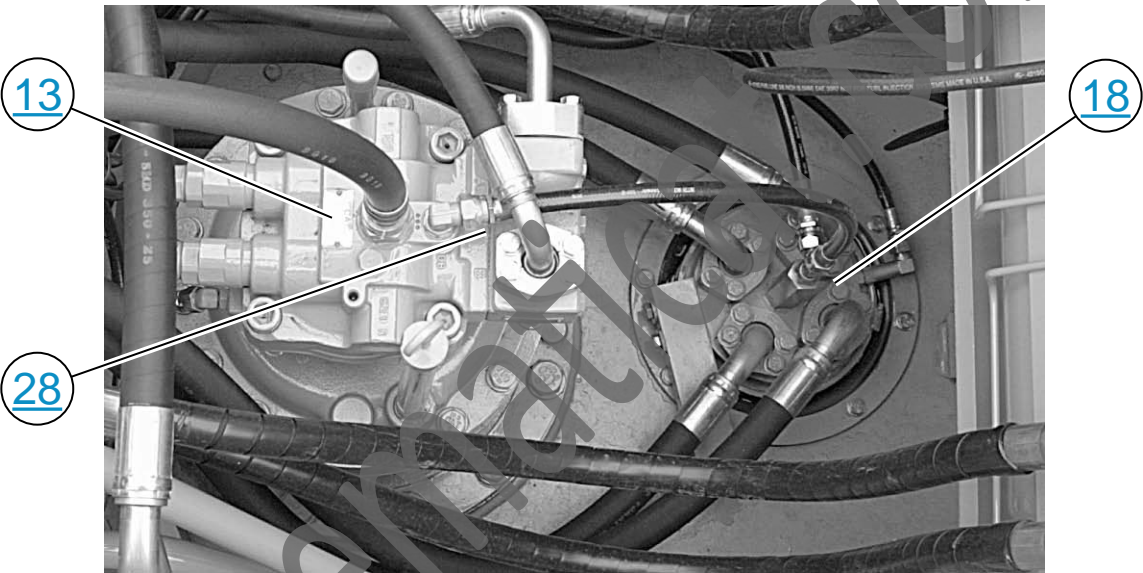
BLCV : BOOM LOWERING CONTROL VALVE





SLCV: Stick Lowering Control Valve

MOTOR GP - SWING SWIVEL



PUMP GP - PISTON (MAIN)

