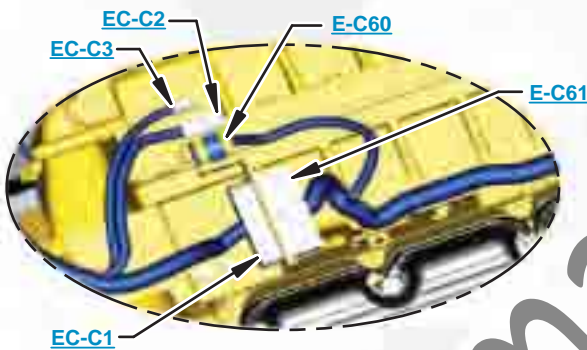




This document is best viewed at a screen resolution of 1024 X 768.

To set your screen resolution do the following:
RIGHT CLICK on the **DESKTOP**.
 Select **PROPERTIES**.
CLICK the **SETTINGS TAB**.
MOVE THE SLIDER under **SCREEN RESOLUTION** until it shows **1024 X 768**.
CLICK OK to apply the resolution.

The Bookmarks panel will allow you to quickly navigate to points of interest.



Click on any text that is BLUE and underlined. These are hyperlinks that can be used to navigate the schematic and machine views.

VIEW ALL CALLOUTS

When only one callout is showing on a machine view this button will make all of the callouts visible. This button is located in the top right corner of every machine view page.

HOTKEYS (Keyboard Shortcuts)		
	FUNCTION	KEYS
	Zoom In	"CTRL" / "+"
	Zoom Out	"CTRL" / "-"
	Fit to Page	"CTRL" / "0" (zero)
	Hand Tool	"SPACEBAR" (hold down)
	Find	"CTRL" / "F"



Schematic

320D, 321D, 323D, 324D, 325D, 329D, 330D, 336D, 336D₂ and 336D MHPU Excavator Hydraulic System - Attachment

320D:	323D:	324D:	329D:	330D:	336D:
A6F1-UP	RAC1-UP	EJC1-UP	XDB1-UP	GGE1-UP	J2F1-UP
A8F1-UP	SDC1-UP	MND1-UP	BFC1-UP	B6H1-UP	LMG1-UP
A9F1-UP	WGC1-UP	T2D1-UP	CZF1-UP	THJ1-UP	MYG1-UP
KGF1-UP	CYD1-UP	JJG1-UP	JBF1-UP	LRM1-UP	KDJ1-UP
MCH1-UP	SED1-UP	BTK1-UP	WDK1-UP	ERN1-UP	WRK1-UP
TDH1-UP	YSD1-UP	SYM1-UP	EBM1-UP	JLP1-UP	PPN1-UP
FAL1-UP	NDE1-UP	JAT1-UP	TPM1-UP	MWP1-UP	MYP1-UP
KLM1-UP	WNE1-UP		YFW1-UP	RAS1-UP	JWR1-UP
SPN1-UP	ZMF1-UP	325D:	SCY1-UP	EDX1-UP	DTS1-UP
WBN1-UP	JLG1-UP	GPB1-UP	DTZ1-UP	T2Y1-UP	WET1-UP
GDP1-UP	BYM1-UP	PKE1-UP			PGW1-UP
PCX1-UP	PBM1-UP	LAL1-UP			
PHX1-UP	NES1-UP	MCL1-UP			
	DKW1-UP	AZP1-UP			
321D:	SBZ1-UP	A3R1-UP	336D MHPU:	336D₂:	
TXA1-UP		GBR1-UP	M3M1-UP	WDC1-UP	
PBD1-UP		T2S1-UP	M3N1-UP	YCF1-UP	
NAS1-UP		CYW1-UP		XBH1-UP	
				TLY1-UP	

Universal Quick Coupler

COMPONENT LOCATION



Description	Part Number	Machine Location	Schematic Location
Attachment: Universal Quick Coupler			
Connector As - Quick Coupler	148-8321	1	E-2
Valve Gp - Check (Quick Coupler)	123-4750	2	B-2
Valve Gp - Shuttle (Quick Coupler)	123-2549	3	C-5
Valve Gp - Quick Coupler	254-3080	4	E-2
Valve Gp - Solenoid (Quick Coupler)	258-6749	5	E-2
Standard Machine			
Accumulator Gp	164-6981	20	B-4
Block	187-6716	21	D-7
Cylinder Gp - Boom	Note A	22	E-6
Cylinder Gp - Bucket	Note A	23	E-7
Cylinder Gp - Stick	Note A	24	E-7
Filter Gp - Case Drain	126-2075	25	A-6
Filter Gp - Pilot Hydraulic	188-2084	26	A-3
Filter Gp - Return Oil	188-4140	27	A-6
Manifold Gp - Control	215-5037	28	B-5
Motor Gp - Swing	158-8986	29	F-5
Motor Gp - Travel Left	215-9952	30	F-4
Motor Gp - Travel Right	215-9952	31	F-3
Pump GP - Main Hydraulic	272-6955	32	B-2
Sensor As - Left Pump Pressure	221-8859	33	B-3
Sensor As - Right Pump Pressure	221-8859	34	A-3
Switch As - LH Travel Pressure	167-3466	35	D-7
Switch As - Pilot Pressure	167-3466	36	B-7
Switch As - RH Travel Pressure	167-3466	37	D-6
Swivel Gp	234-4440	38	E-4
Tank Gp - Hydraulic Oil	245-5141	39	A-4
Valve Gp - Cooler Bypass	173-4672	40	B-7
Valve Gp - Heavy Lift Solenoid	121-6303	41	B-3
Valve Gp - LH Joystick	232-4100	42	C-7
Valve Gp - Load Control Boom Cylinder	255-5683	43	D-2
Valve Gp - Load Control Stick Cylinder	255-5680	44	D-5
Valve Gp - Main Control	259-7602	45	C-4
Valve Gp - Pilot Travel	158-8250	46	D-7
Valve Gp - Press Reducing Boom/Swing	232-4102	47	B-3
Valve Gp - Press Reducing Boom/Swing	232-4102	48	B-4
Valve Gp - RH Joystick	225-4813	49	C-6
Valve Gp - Shuttle	185-0462	50	C-7
Valve Gp - Swing Cushion	322-8716	51	E-5
Valve Gp - Travel LT Counterbalance	204-2819	52	E-4
Valve Gp - Travel RT Counterbalance	204-2819	53	E-3

NOTE A: Check the parts manual for the correct cylinder part number.

TAP LOCATION

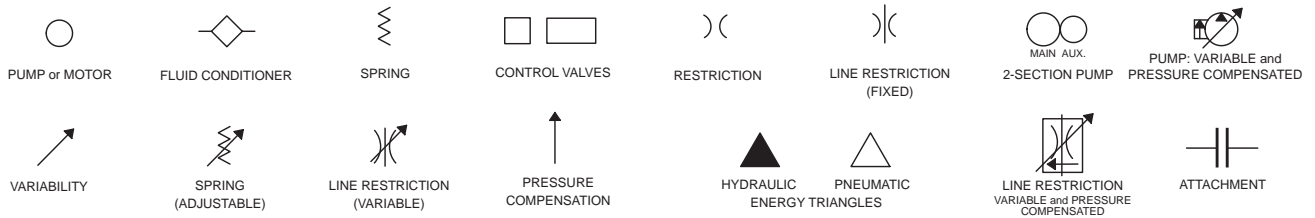


Tap Number	Description	Schematic Location
EE	Left Pump Delivery Pressure	B-2
FF	Right Pump Delivery Pressure	A-2
GG	Pilot Pump Delivery Pressure	A-3
HH	Left Pump Power Shift Pressure	B-2
JJ	Case Drain Pressure	B-2
KK	Right Pump Power Shift Pressure	A-2
LL	Quick Coupler Unlock Pressure	F-3
MM	Quick Coupler Lock Pressure	F-2
SOS	Hydraulic Oil Sampling Port	A-3

FLUID POWER SYMBOLS



BASIC COMPONENT SYMBOLS



VALVE ENVELOPES

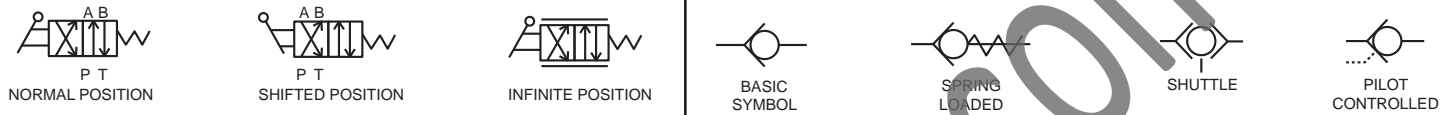
VALVES

VALVE PORTS



CONTROL VALVES

CHECK VALVES



FLUID STORAGE RESERVOIRS



MEASUREMENT

ROTATING SHAFTS



COMBINATION CONTROLS



MANUAL CONTROL SYMBOLS



RELEASED PRESSURE

PILOT CONTROL SYMBOLS

REMOTE SUPPLY PRESSURE



ACCUMULATORS

CROSSING AND JOINING LINES

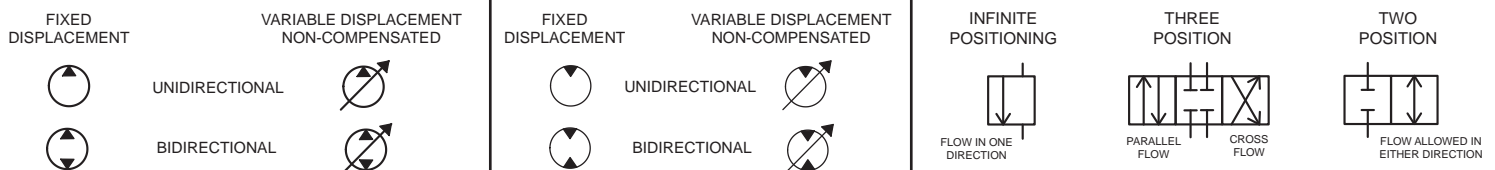
HYDRAULIC AND PNEUMATIC CYLINDERS



HYDRAULIC PUMPS

HYDRAULIC MOTORS

INTERNAL PASSAGEWAYS



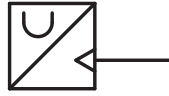
ELECTRICAL SYMBOLS



Hydraulic Symbols (Electrical)



Transducer
(Fluid)



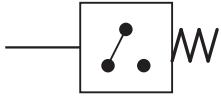
Transducer
(Gas / Air)



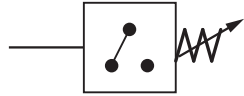
Generator



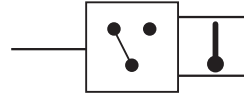
Electric Motor



Pressure Switch



Pressure Switch
(Adjustable)

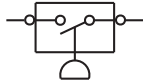


Temperature Switch

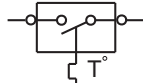


Electrical Wire

Electrical Symbols (Electrical)



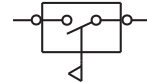
Pressure
Symbol



Temperature
Symbol



Level
Symbol

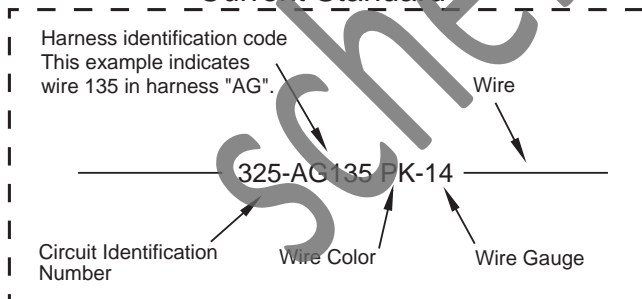


Flow
Symbol

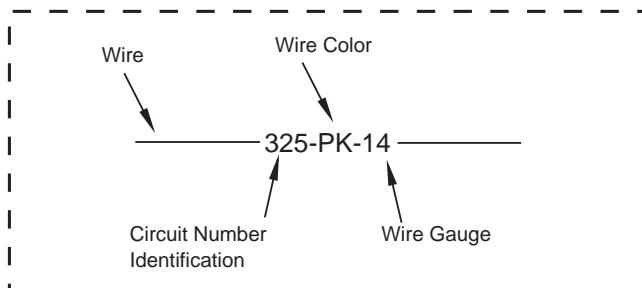
Wire Number Identification Codes

Electrical Schematic Example

Current Standard

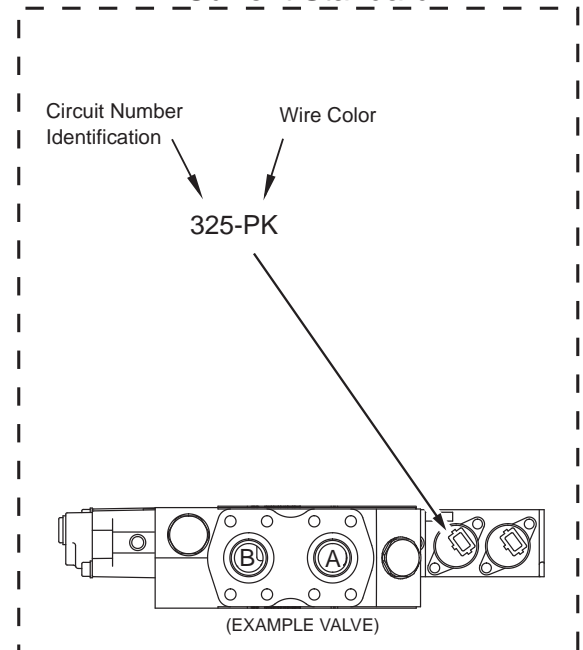


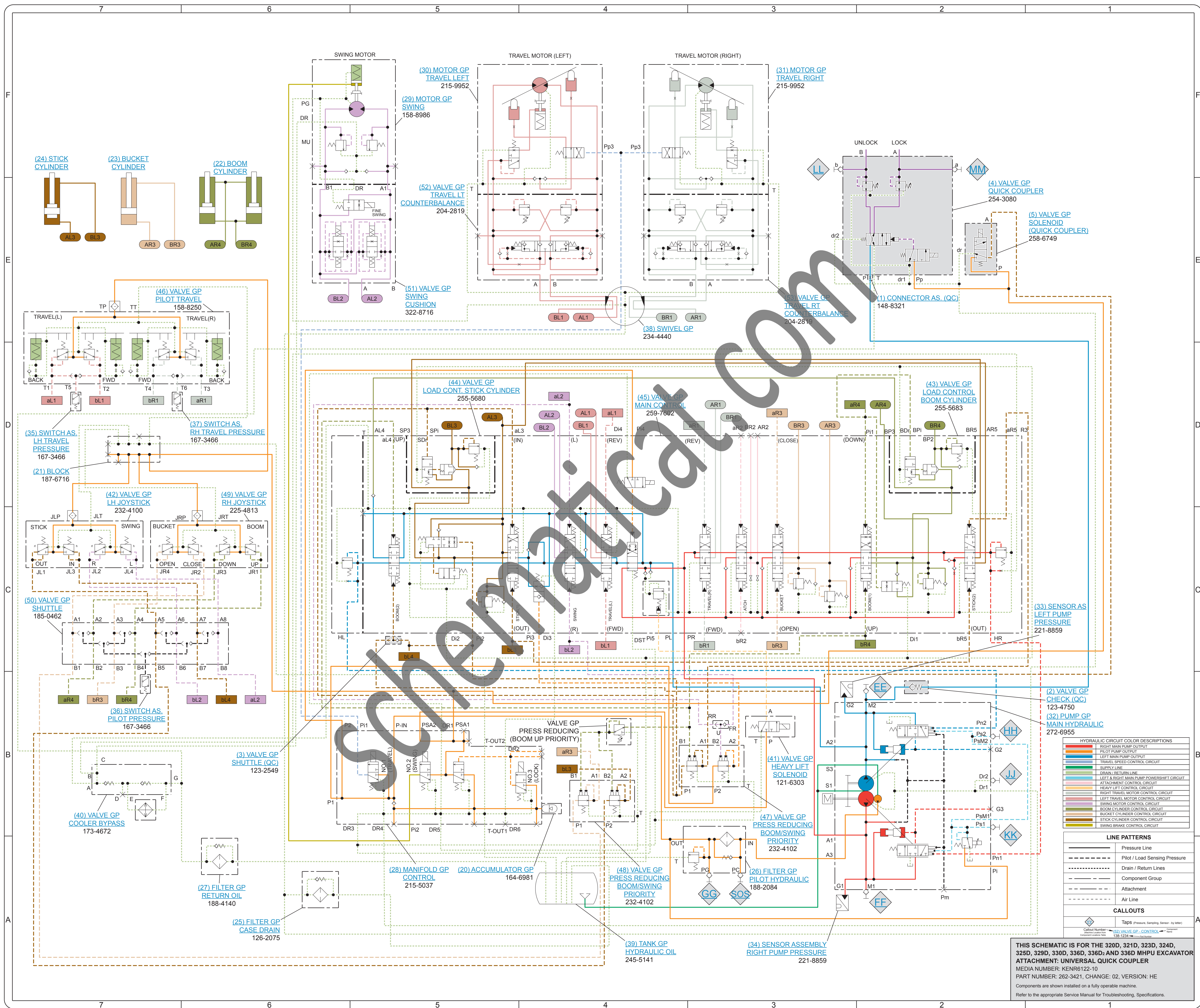
Previous Standard



Hydraulic Schematic Example

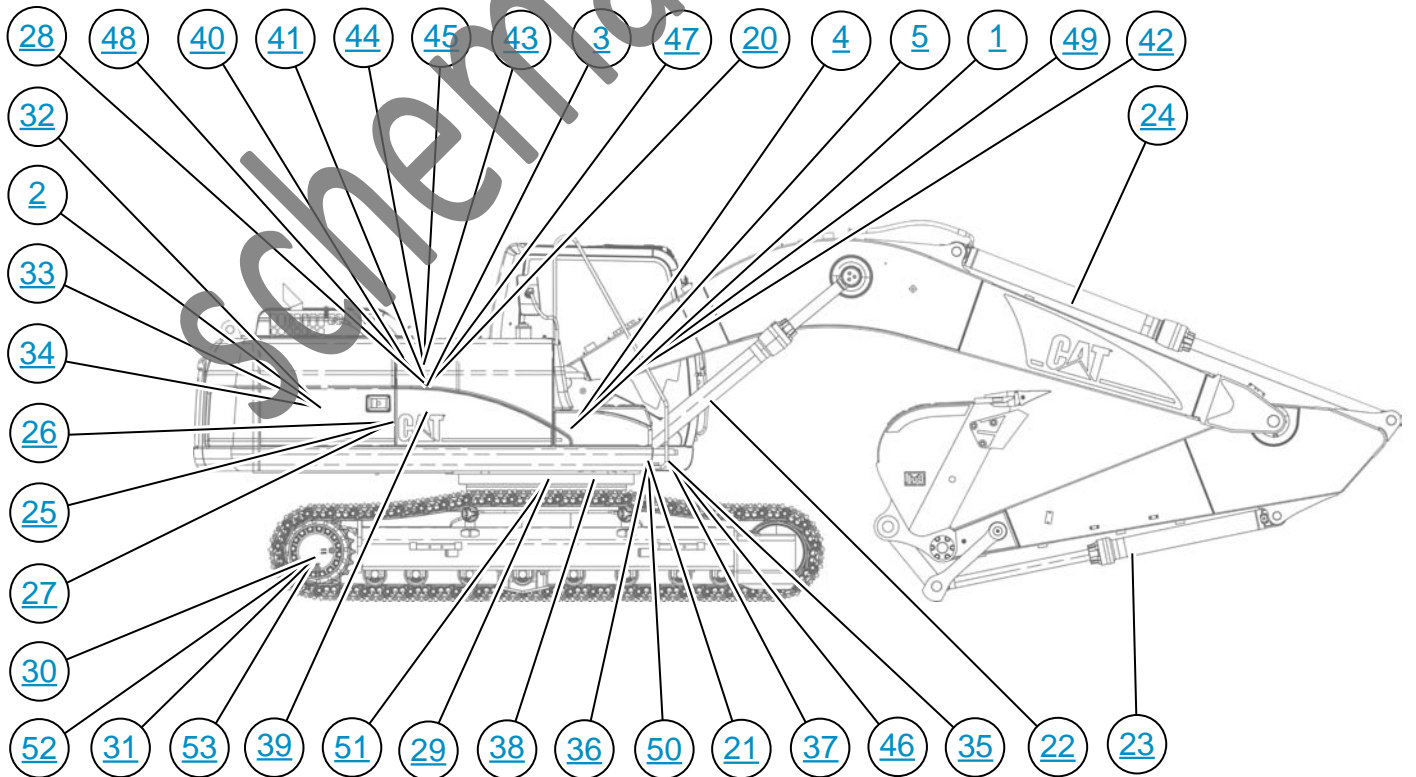
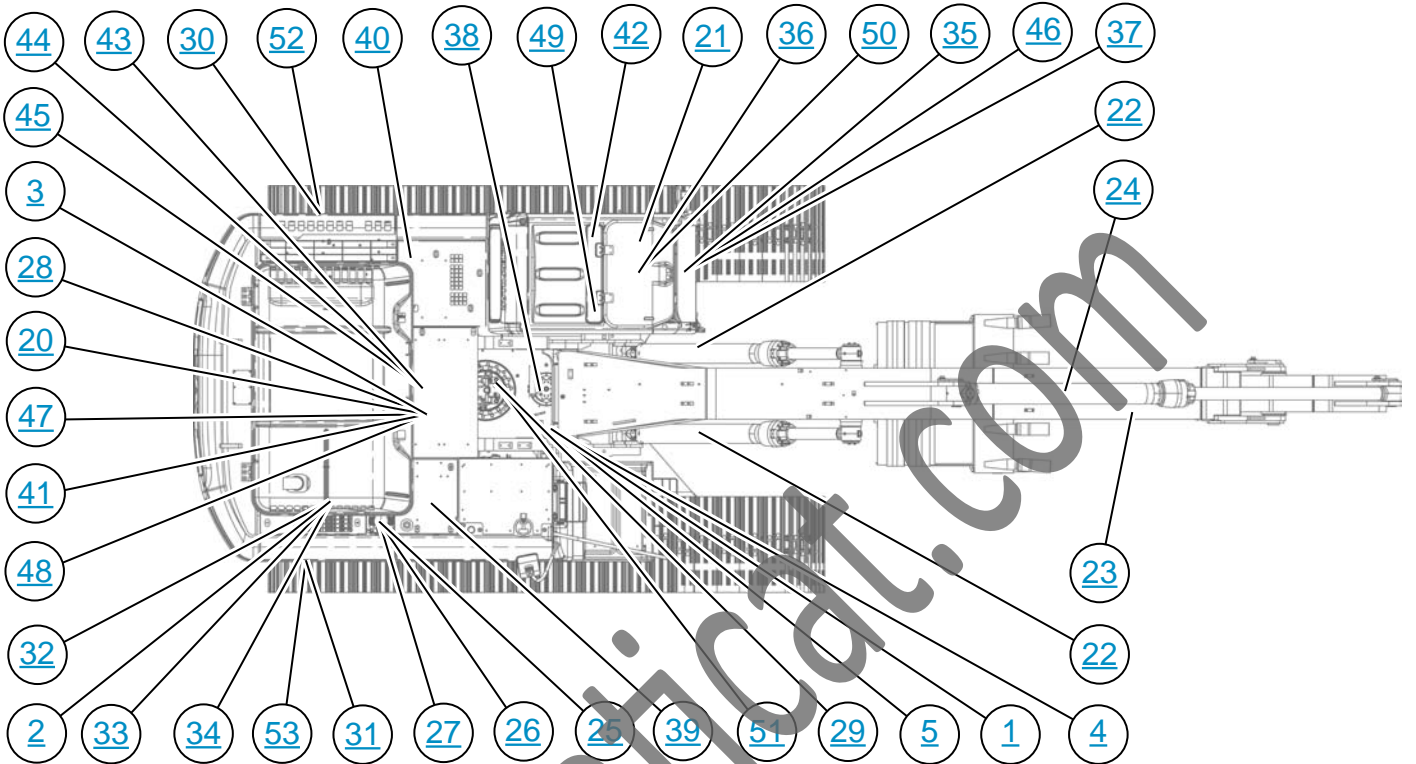
Current Standard

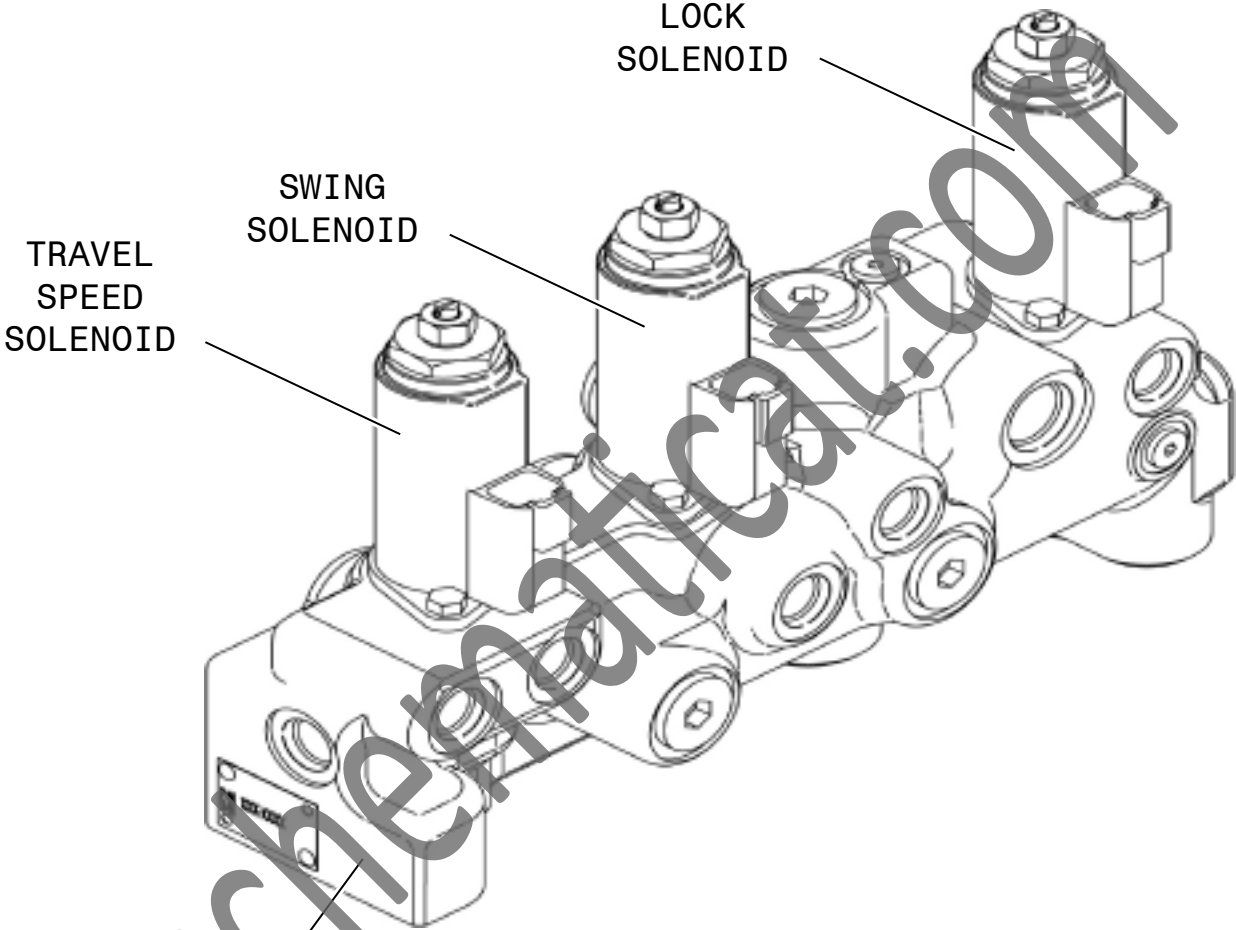




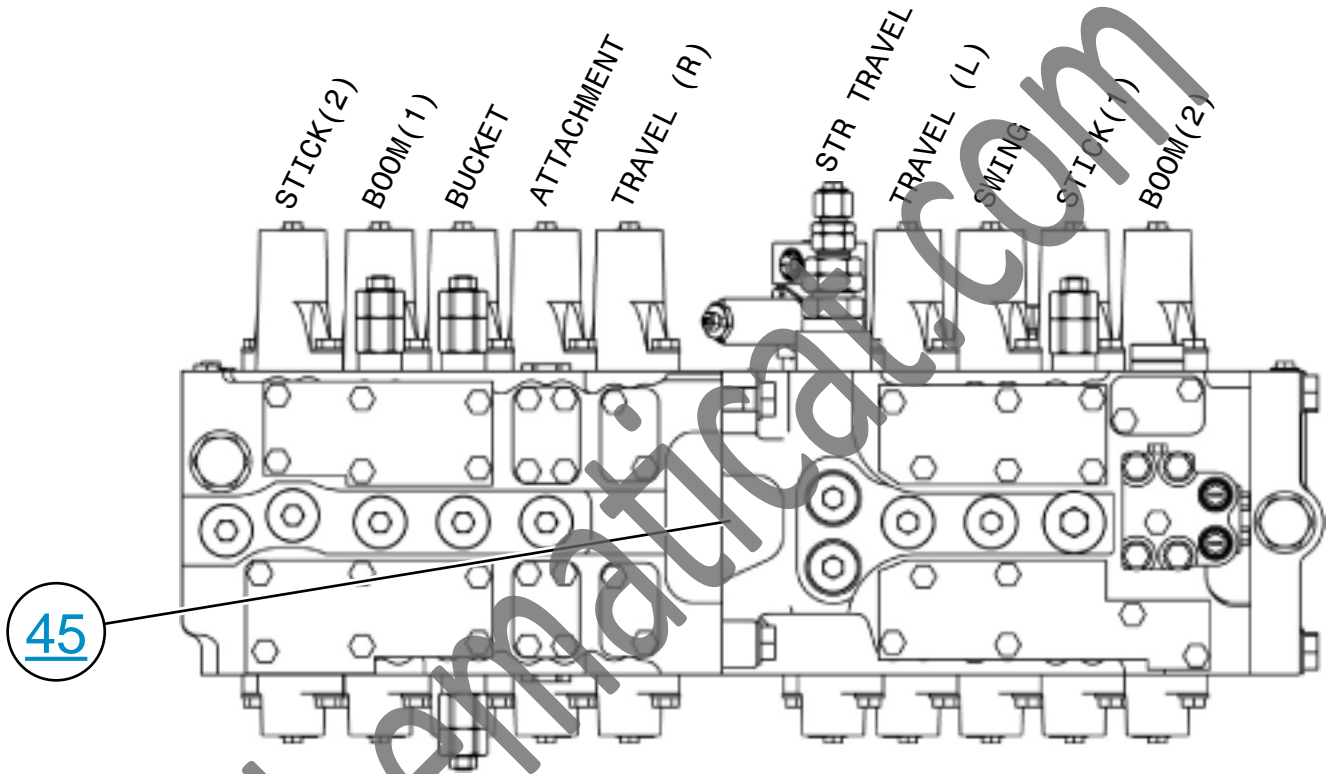
THIS SCHEMATIC IS FOR THE 320D, 321D, 323D, 324D, 325D, 329D, 330D, 336D, 336D2, 336D AND 336D MHPU EXCAVATOR ATTACHMENT: UNIVERSAL QUICK COUPLER
 MEDIA NUMBER: KENR6122-10
 PART NUMBER: 262-3421, CHANGE: 02, VERSION: HE
 Components are shown installed on a fully operable machine.
 Refer to the appropriate Service Manual for Troubleshooting, Specifications.

MACHINE COMPONENT LOCATIONS



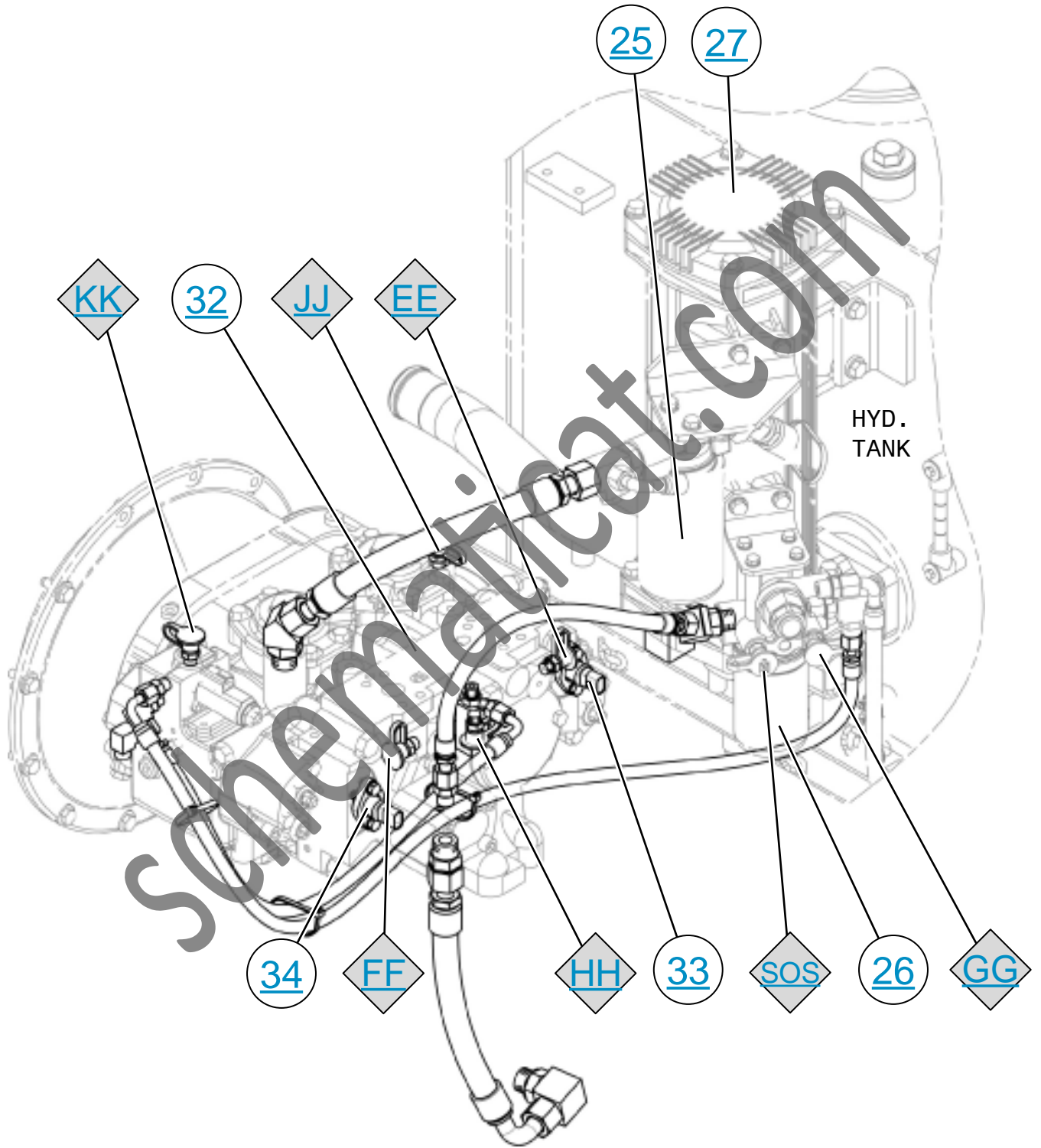


MAIN CONTROL VALVE



45

MAIN PUMP AND FILTER CIRCUITS



QUICK COUPLER CIRCUIT

