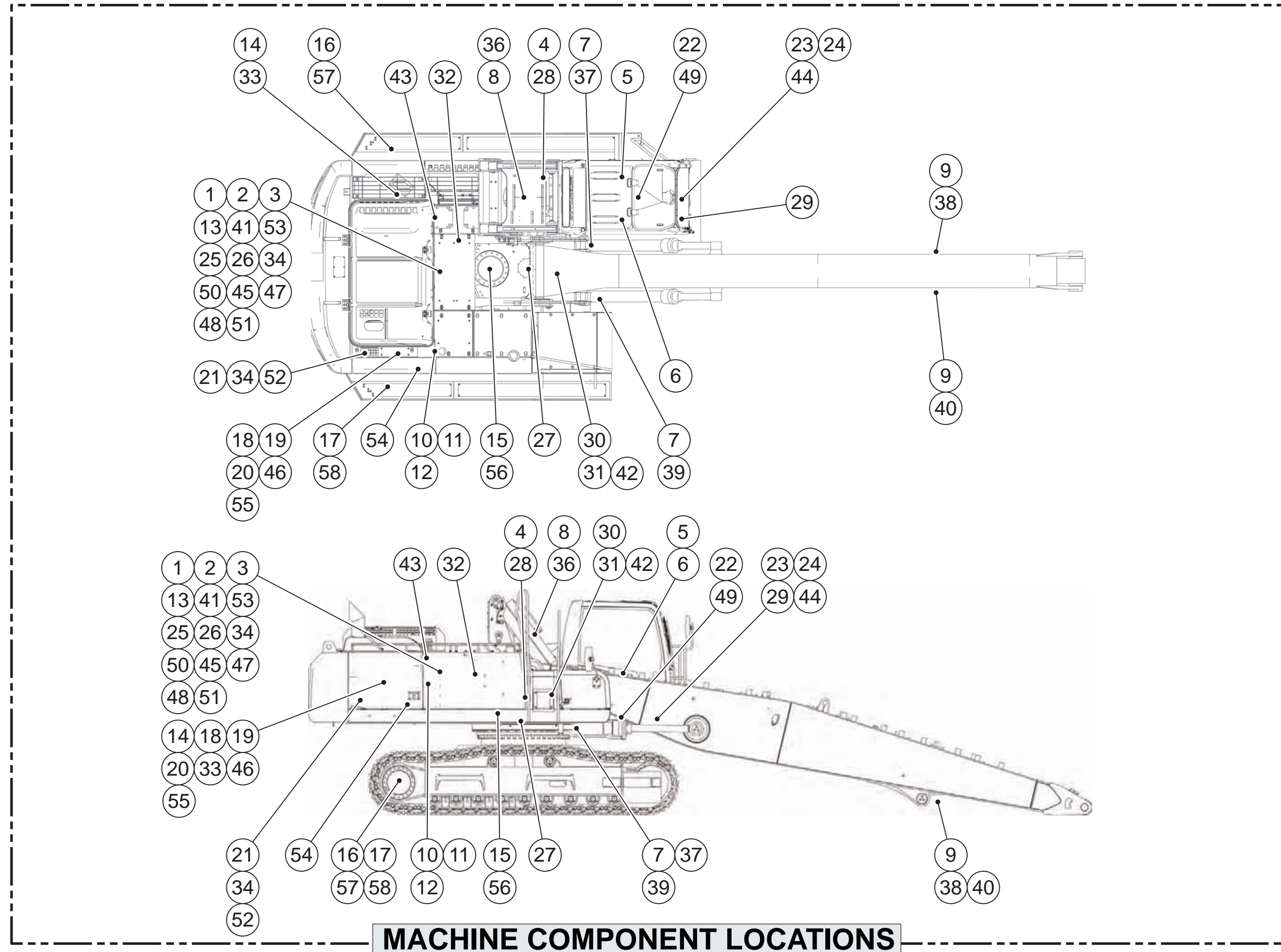


Component Locations			
Description	Part Number	Machine Location	Schematic Location
Accumulator As - Oil/Oil	164-6981	1	C-8
Block As	185-0488	2	D-5
Block As	201-9379	3	D-7
Connector As	257-2979	4	F-1
Control Gp - Joystick (LH)	259-7763	5	C-4
Control Gp - Joystick (RH)	259-7762	6	C-3
Cylinder Gp - Boom	Note A	7	F-5
Cylinder Gp - Grapple	Note A	-	D-3
Cylinder Gp - Hydraulic Cab Riser	236-8287	8	F-2
Cylinder Gp - Stick	Note A	9	F-3
Filter & Valve Gp - Pilot	158-8987	10	A-6
Filter Gp - Case Drain	126-2075	11	B-6
Filter Gp - Hydraulic Return	188-4140	12	B-7
Manifold Gp - Control (Pilot Oil)	215-5037	13	B-7
Motor Gp - Fan	242-0776	14	A-8
Motor Gp - Swing	266-7922	15	F-8
Motor Gp - Travel (LH)	271-6376	16	F-7
Motor Gp - Travel (RH)	271-6376	17	F-6
Pump Gp - Auxiliary	207-8235	18	C-6
Pump Gp - Hydraulic Fan	259-2815	19	B-6
Pump Gp - Main	263-6116	20	C-6
Switch As - Action Input Pressure (Fore Boom)	167-3466	21	C-3
Switch As - Action Input Pressure (Joysticks)	167-3466	22	B-4
Switch As - Action Input Pressure (Travel Left)	167-3466	23	B-5
Switch As - Action Input Pressure (Travel Right)	167-3466	24	B-5
Switch As - Pressure (Boom Circuit Pilot)	167-3466	25	E-4
Switch As - Pressure (Boom Lower)	224-0744	26	E-4
Swivel Gp	234-4440	27	F-2
Valve As - Shutoff (Cab Manual Lowering)	232-7226	28	F-1
Valve As - Shutoff (Cab Manual Lowering)	226-8660	29	F-1
Valve Gp - Check (Head End Boom Cylinder)	297-0371	30	E-6
Valve Gp - Check (Rear End Boom Cylinder)	297-0370	31	E-5
Valve Gp - Control (HCR, Rotator, Medium Press)	283-1962	32	F-3
Valve Gp - Control (Reverse Flow)	234-4624	33	A-8
Valve Gp - Flow Control (Boom Cyl Decompression)	168-0712	34	D-3
Valve Gp - Flow Control (Boom Float, Pilot Oil)	201-9236	35	E-4
Valve Gp - Load Control (HCR Lowering)	185-1247	36	E-1
Valve Gp - Load Control Left (Boom Lower, Drift Red)	263-1962	37	F-5
Valve Gp - Load Control Left (Stick Lowering)	232-9264	38	F-4
Valve Gp - Load Control Right (Boom Lower, Drift Red)	263-1962	39	F-4
Valve Gp - Load Control Right (Stick Lowering)	202-9264	40	F-3
Valve Gp - Main Control	285-1542	41	D-5
Valve Gp - Manual (Boom Lowering)	270-5692	42	F-5
Valve Gp - Oil Cooler Bypass	190-7745	43	B-6
Valve Gp - Pilot (Travel)	270-5247	44	B-5
Valve Gp - Pressure Reducing (Boom Swing Priority)	232-4102	45	C-7
Valve Gp - Pressure Reducing (HCR / HSRV)	257-2892	46	D-1
Valve Gp - Relief (Line)	255-5661	47	D-6
Valve Gp - Shuttle	259-7732	48	C-8
Valve Gp - Shuttle (Joystick)	186-0462	49	B-4
Valve Gp - Solenoid (Boom Float)	185-0472	50	A-5
Valve Gp - Solenoid (Heavy Lift)	121-6303	51	C-7
Valve Gp - Solenoid (Negative Flow Control, PRV)	171-0188	52	C-5
Valve Gp - Solenoid (Reversing Fan)	242-6880	53	A-7
Valve Gp - Solenoid (Work Tool 4 Function)	259-7429	54	D-1
Valve Gp - Stop Valve: Stick In & Boom Up	255-7979	55	A-5
Valve Gp - Swing Cushion	158-6099	56	F-8
Valve Gp - Travel Counterbalance LH	204-2819	57	E-7
Valve Gp - Travel Counterbalance RH	204-2819	58	E-6

Note A: For Cylinder Part Numbers refer to the Parts Manual.



MACHINE COMPONENT LOCATIONS

CATERPILLAR®

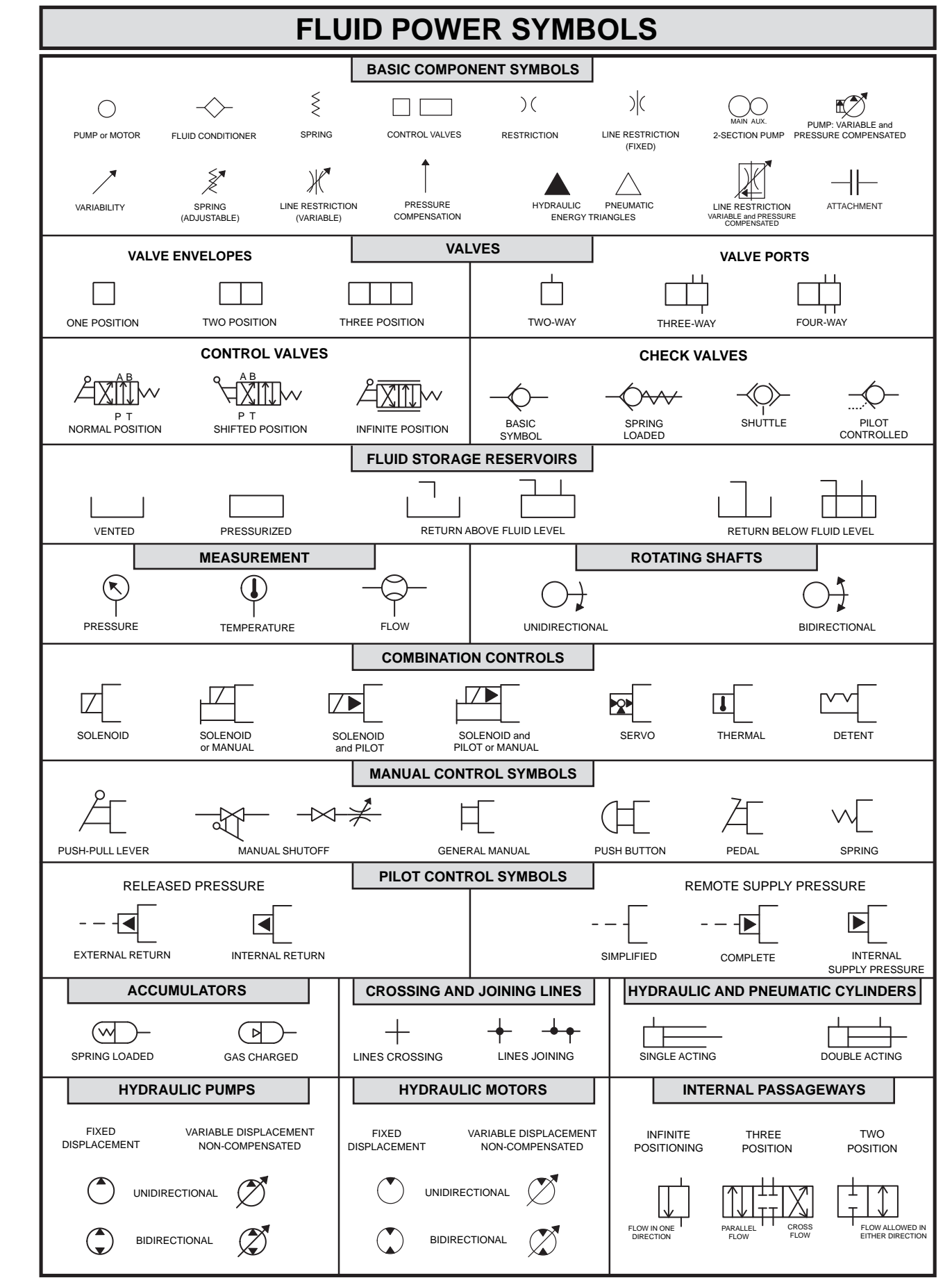
REN7147
June 2007

Schematic

330D Material Handler Hydraulic System

PEL1-UP

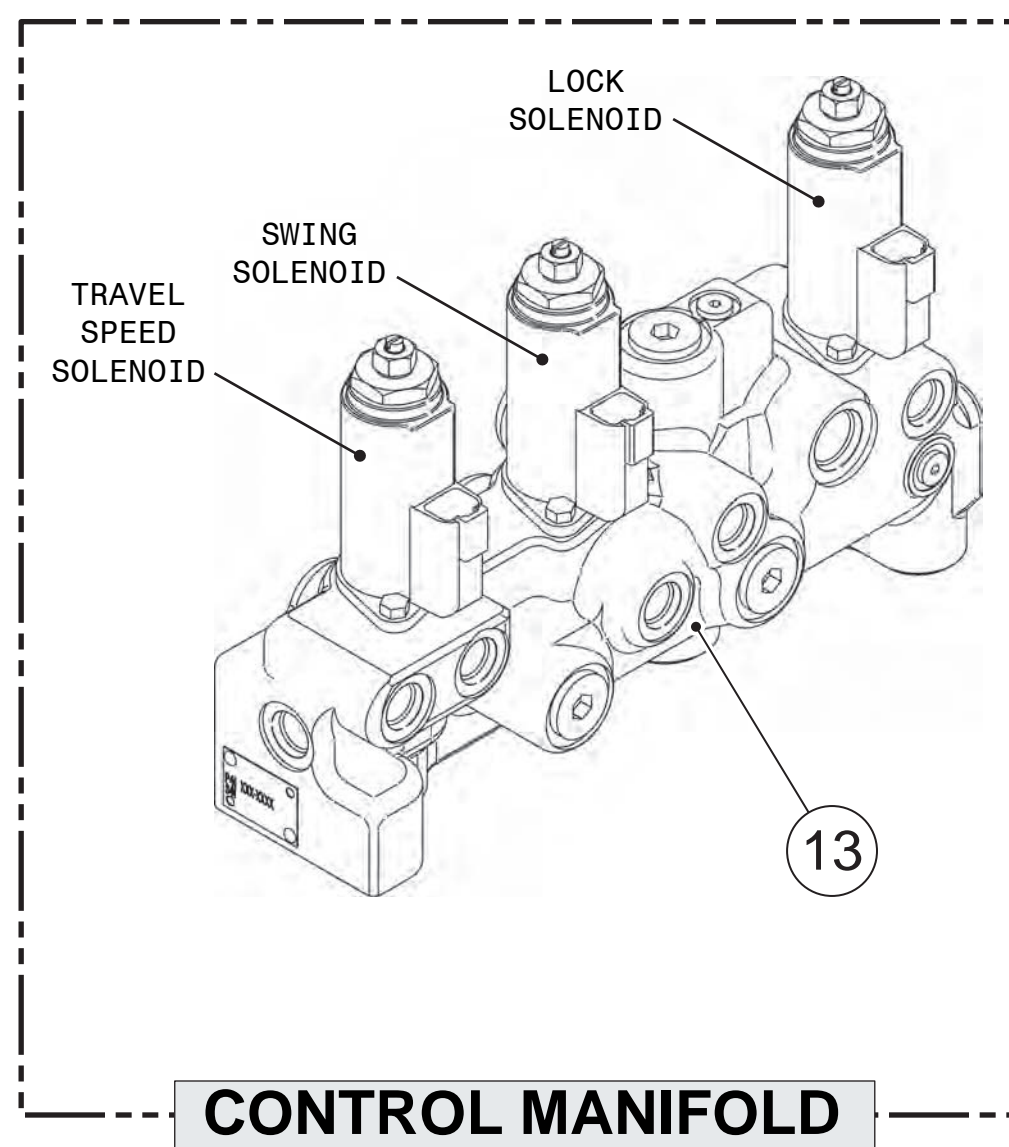
Hydraulic Cab Riser



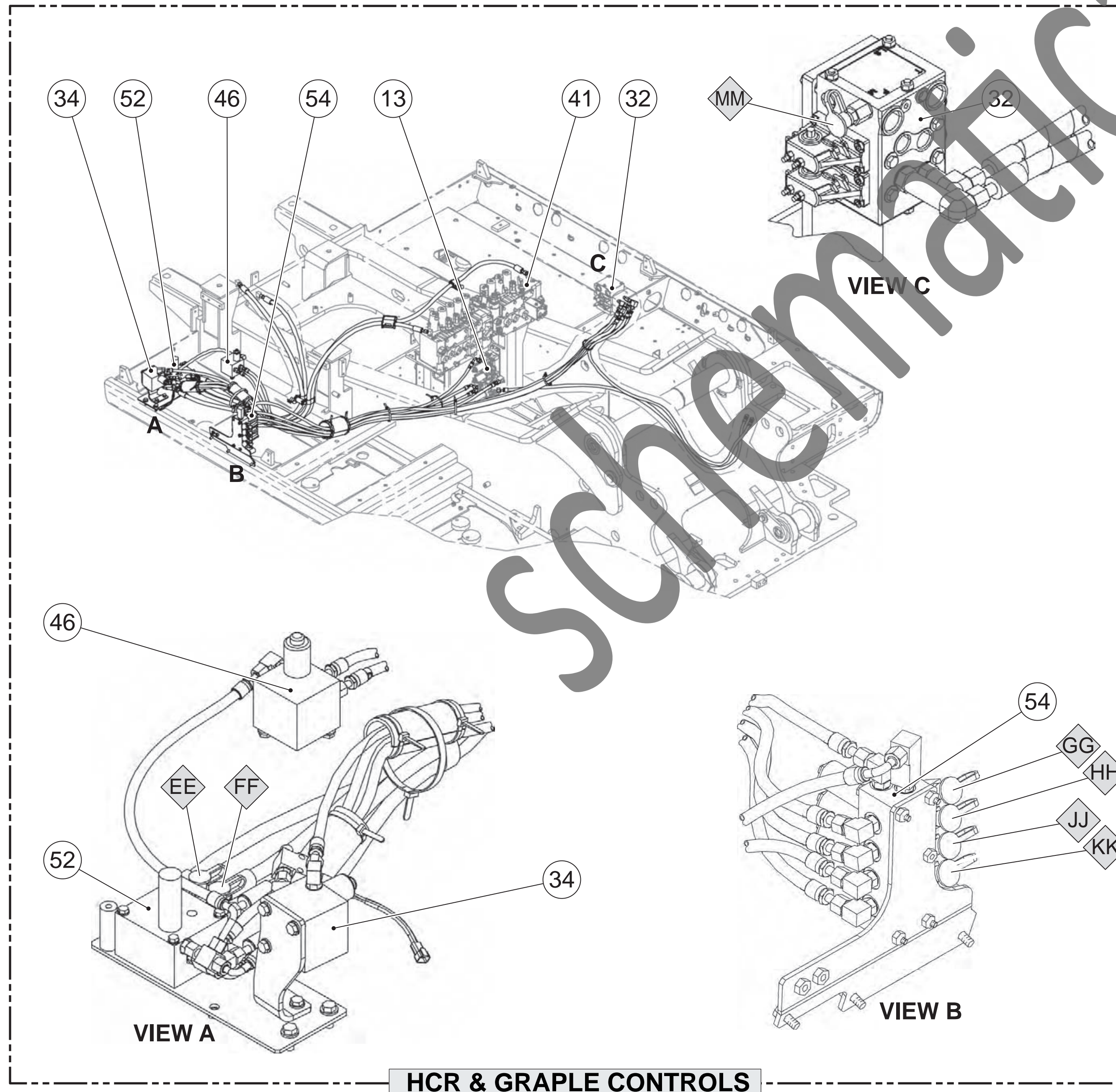
©2007 Caterpillar
All Rights Reserved

Printed in U.S.A.

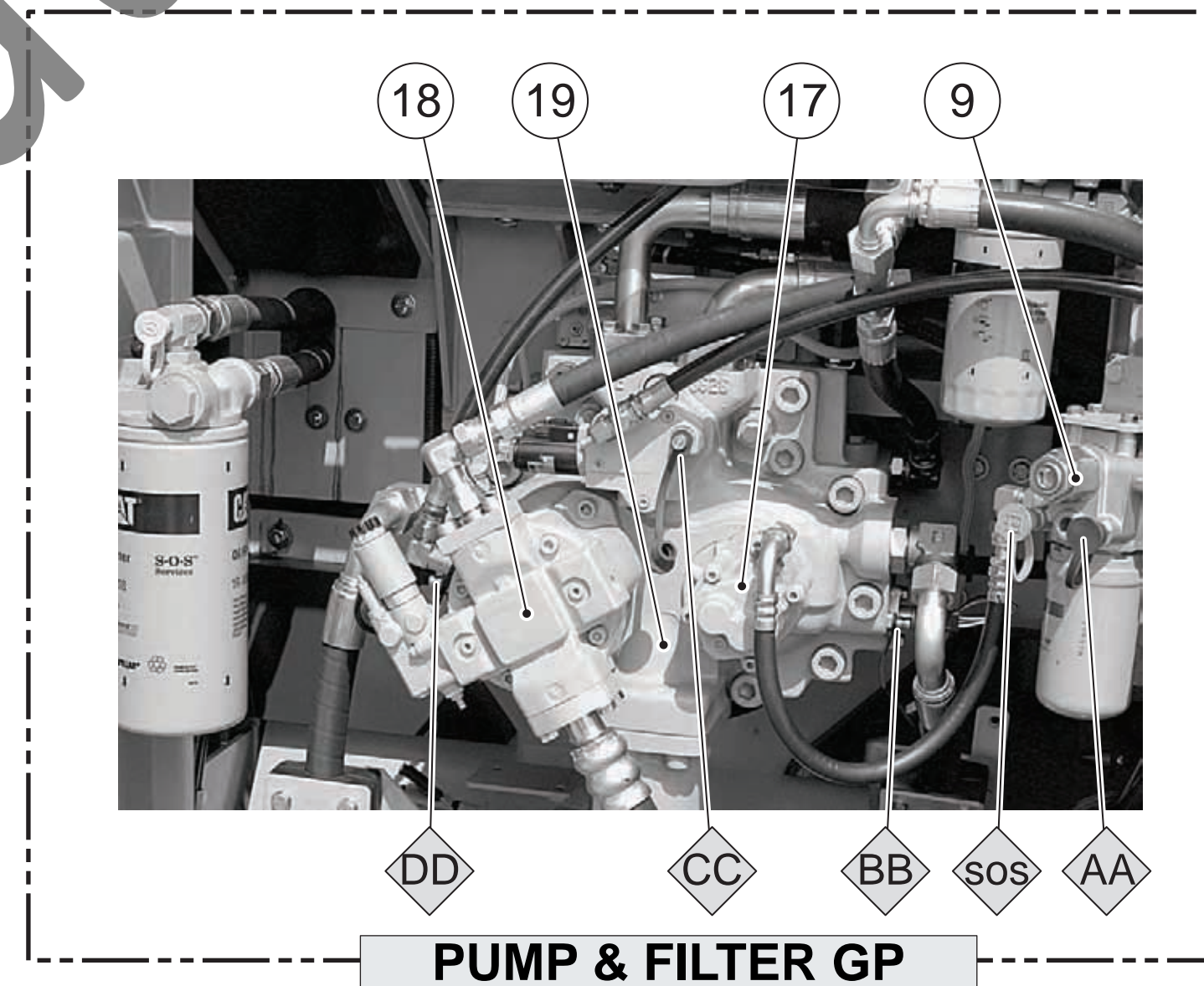
Tap Locations Pressure, Sampling, and Sensor		
Tap Number	Description	Schematic Location
AA	Pilot Pump Delivery Pressure	A-6
BB	Right Pump Delivery Pressure	B-5
CC	Power Shift Pressure	B-5
DD	Left Pump Delivery Pressure	B-5
EE	Right Pump Load Signal	C-5
FF	Left Pump Load Signal	C-5
GG	Rotate Solenoid B1 Pressure	E-1
HH	Rotate Solenoid B2 Pressure	E-1
JJ	HCR Up Solenoid Pressure	D-1
KK	HCR Down Solenoid Pressure	D-1
MM	Auxiliary Pump Delivery Pressure	E-1
SOS	Hydraulic Oil Sampling Port	A-6



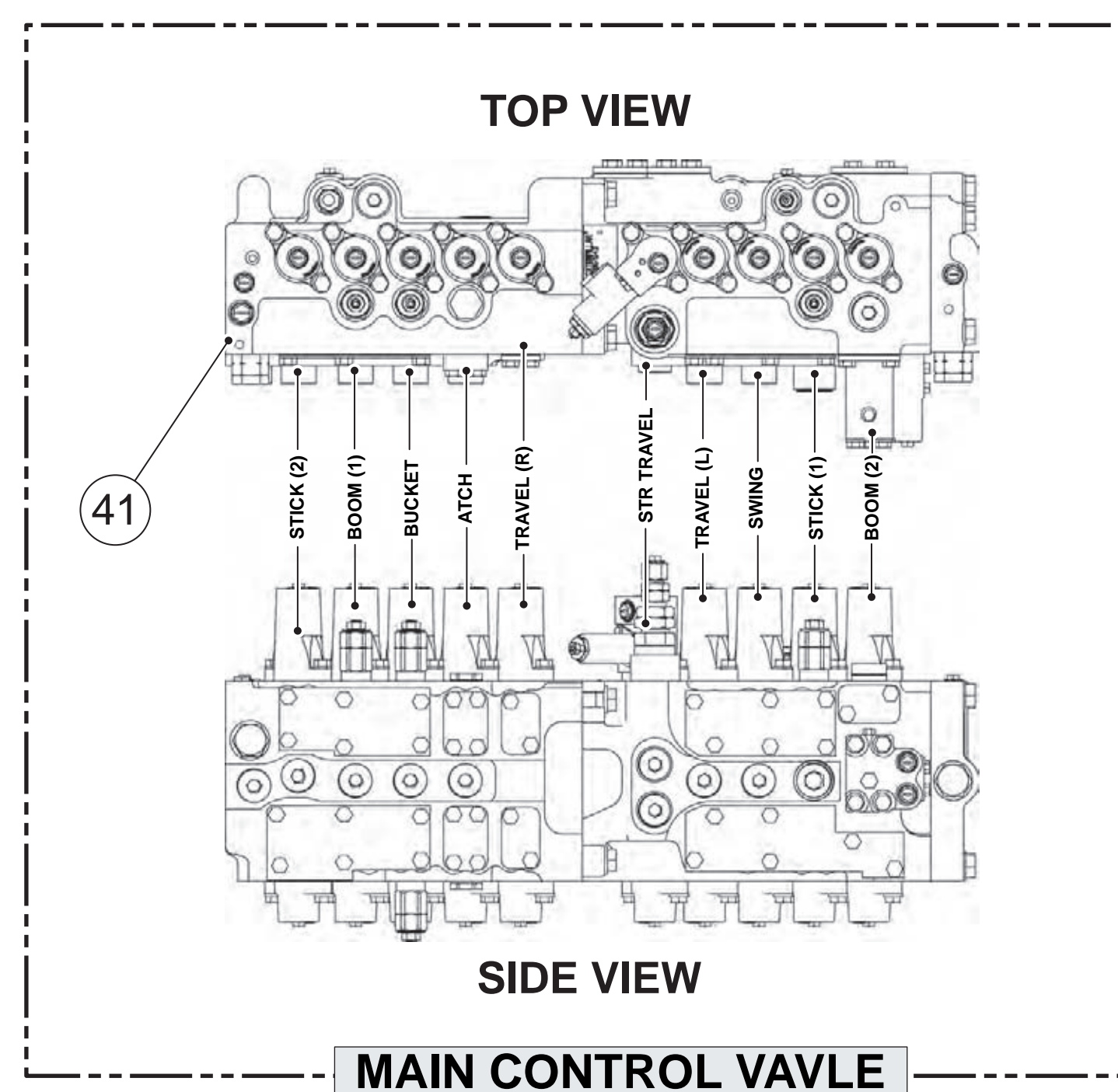
CONTROL MANIFOLD



HCR & GRAPLE CONTROLS



PUMP & FILTER GP



MAIN CONTROL VALVE

