



SENR3011
July 1983

Schematic

120G Motor Grader Hydraulic System

Motor Grader:

82V870-UP
87V4690-UP

©1983 Caterpillar
All Rights Reserved

Printed in U.S.A.

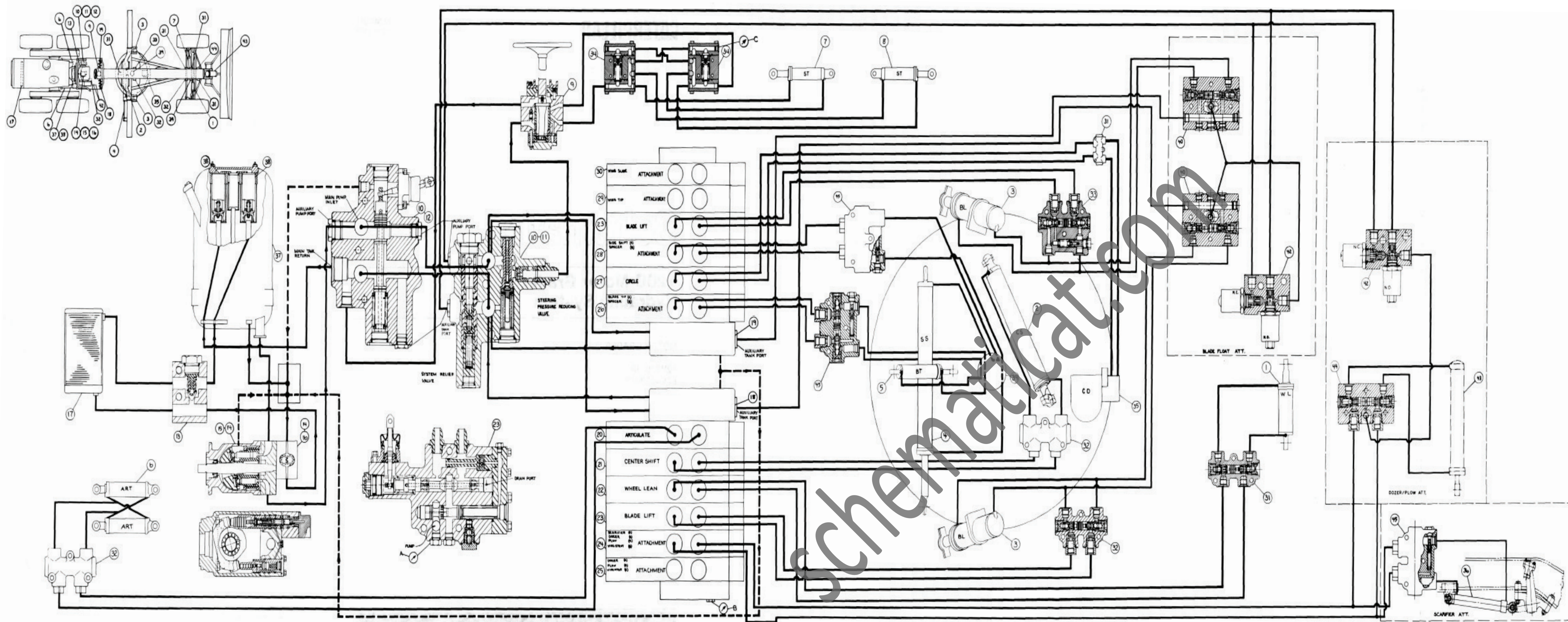


CHART PRESSURE TAPS	
A	PUMP
B	IMPLEMENT LINE
C	STEERING RELIEF

1	CYLINDER FOR WHEEL LEAN
2	CYLINDER FOR CENTER SHIFT
3	CYLINDERS FOR BLADE LIFT
4	CYLINDER FOR BLADE SIDE SHIFT
5	CYLINDER FOR BLADE TIP
6	CYLINDERS FOR ARTICULATION
7	CYLINDER FOR STEERING (L.H.)
8	CYLINDER FOR STEERING (R.H.)
9	METERING PUMP FOR STEERING
10	COMBINATION VALVE
11	RELIEF AND REDUCING VALVE
12	UNLOADING VALVE
13	RELIEF VALVE FOR COOLER
14	IMPLEMENT PUMP
15	VARIABLE DISPLACEMENT PUMP
16	PUMP FOR COOLING
17	COOLER
18	CONTROL VALVE GROUP
19	CONTROL VALVE GROUP
20	VALVE FOR ARTICULATION
21	VALVE FOR CENTER SHIFT
22	VALVE FOR WHEEL LEAN
23	VALVE FOR BLADE LIFT
24	VALVE FOR ATTACHMENT
25	VALVE FOR ATTACHMENT
26	VALVE FOR BLADE TIP
27	VALVE FOR CIRCLE DRIVE
28	VALVE FOR BLADE SIDE SHIFT
29	VALVE FOR ATTACHMENT
30	VALVE FOR ATTACHMENT
31	LOCK CHECK VALVE
32	LOCK CHECK VALVE
33	LOCK CHECK VALVE
34	RELIEF VALVES FOR STEERING
35	HYDRAULIC MOTOR FOR CIRCLE DRIVE
36	CYLINDER FOR RIPPER
37	HYDRAULIC TANK
38	FILTERS
39	SWIVEL
40	LOCK CHECK VALVE (PILOT OPERATED)
41	NOT USED
42	PILOT VALVE (SOLENOID OPERATED)
43	CYLINDER FOR DOZER OR PLOW
44	LOCK CHECK VALVE (PILOT OPERATED)
45	LOCK CHECK VALVE (PILOT OPERATED)