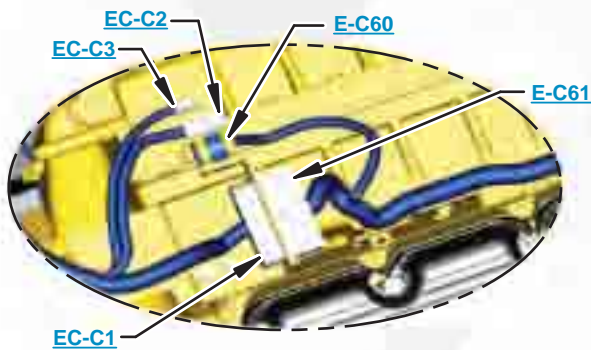


***This document is best viewed at a screen resolution of 1024 X 768.***

To set your screen resolution do the following:  
**RIGHT CLICK** on the **DESKTOP**.  
 Select **PROPERTIES**.  
**CLICK** the **SETTINGS TAB**.  
**MOVE THE SLIDER** under **SCREEN RESOLUTION** until it shows **1024 X 768**.  
**CLICK OK** to apply the resolution.

The Bookmarks panel will allow you to quickly navigate to points of interest.



Click on any text that is BLUE and underlined. These are hyperlinks that can be used to navigate the schematic and machine views.

**VIEW ALL CALLOUTS**

When only one callout is showing on a machine view this button will make all of the callouts visible. This button is located in the top right corner of every machine view page.

| HOTKEYS (Keyboard Shortcuts) |             |                        |
|------------------------------|-------------|------------------------|
|                              | FUNCTION    | KEYS                   |
|                              | Zoom In     | “CTRL” / “+”           |
|                              | Zoom Out    | “CTRL” / “-”           |
|                              | Fit to Page | “CTRL” / “0” (zero)    |
|                              | Hand Tool   | “SPACEBAR” (hold down) |
|                              | Find        | “CTRL” / “F”           |



# Schematic

---

834H Wheel Tractor  
836H Landfill Compactor  
Hydraulic System

---

**834H:**  
**BTX1-999**

**836H:**  
**BXD1-999**

# COMPONENT LOCATION

Page 1 of 2



| Description   | Part Number | Machine Location   | Schematic Location 834H  | Schematic Location 836H |
|---|-------------|--------------------|--------------------------|-------------------------|
| <b>Steering</b>   |             |                    |                          |                         |
| Ball (Make Up Valve)  | 4B-9782     | <a href="#">1</a>  | <a href="#">C-8</a>      |                         |
| Cylinder Gp -Steering   | 175-5521    | <a href="#">2</a>  | <a href="#">D-8</a>      |                         |
| Filter Gp -Oil (Hyd Fan Pump, Filter Case Drain)              | 166-4647    | <a href="#">3</a>  | <a href="#">A-6</a>      |                         |
| Plug -Pipe  | 1T-0936     | <a href="#">1</a>  | <a href="#">C-8</a>      |                         |
| Pump Gp -Gear (Secondary Steering)                            | 150-7585    | <a href="#">4</a>  | <a href="#">C-5</a>      |                         |
| Pump Gp -Piston (Steering)                                    | 153-9624    | <a href="#">32</a> | <a href="#">A-7</a>      |                         |
| Valve (Makeup)  | 7J-7423     | <a href="#">1</a>  | <a href="#">D-6</a>      |                         |
| Valve (Primary Steering Pump Check)                           | 6E-3780     |                    |                          |                         |
| Valve Gp -Check (Brake Accumulator)                           | 104-7108    | <a href="#">31</a> | <a href="#">B-7</a>      |                         |
| Valve Gp -Check (Dead Engine, Lift Arm Lower)                 | 9T-3096     |                    |                          |                         |
| Valve Gp -Check (Steering Quad)                               | 149-4617    | <a href="#">1</a>  | <a href="#">C-8</a>      |                         |
| Valve Gp -Diverter (Load Sensing)                             | 152-6478    | <a href="#">1</a>  | <a href="#">D-5</a>      |                         |
| Valve Gp -Pilot (Stic Steering)                               | 249-5615    | <a href="#">29</a> | <a href="#">B-8</a>      |                         |
| Valve Gp -Pilot (Steering)                                    | 130-1246    | <a href="#">5</a>  |                          | <a href="#">A-8</a>     |
| Valve Gp -Pressure Reducing (Lowering Control)                | 6E-4286     | <a href="#">1</a>  | <a href="#">C-6, C-7</a> |                         |
| Valve Gp -Pump Control (Pressure Compensator)                 | 176-7520    | <a href="#">32</a> | <a href="#">B-7</a>      |                         |
| Valve Gp -Pump Control (Pressure, Flow Compensator)           | 176-2521    |                    |                          |                         |
| Valve Gp -Relief (Line)                                       | 6E-6188     | <a href="#">1</a>  | <a href="#">C-7, D-6</a> |                         |
| Valve Gp -Relief (Secondary Steering)                         | 6E-3986     | <a href="#">1</a>  | <a href="#">D-5</a>      |                         |
| Valve Gp -Relief (Steering Cylinder Crossover)                | 9T-7419     | <a href="#">1</a>  | <a href="#">D-8</a>      |                         |
| Valve Gp -Selector & Pressure Control (Boom)                  | 6E-5566     | <a href="#">1</a>  | <a href="#">C-6</a>      |                         |
| Valve Gp -Shuttle   | 148-2341    | <a href="#">1</a>  | <a href="#">D-8</a>      |                         |
| Valve Gp -Steering (with Secondary Steering)                  | 306-9399    | <a href="#">1</a>  | <a href="#">D-6</a>      |                         |
| Valve Gp -Steering (without Secondary Steering, Load Sensing) | 306-9397    | <a href="#">1</a>  | <a href="#">D-7</a>      |                         |
| Valve Gp -Steering Neutralizer (HMU Steering)                 | 146-7571    | <a href="#">30</a> | <a href="#">B-8</a>      |                         |
| <b>Implement</b>  |             |                    |                          |                         |
| Actuator Gp -Pilot Control - 834H                             | 192-6443    | <a href="#">8</a>  | <a href="#">C-1</a>      |                         |
| Actuator Gp -Pilot Control - 836H                             | 192-6443    | <a href="#">7</a>  |                          | <a href="#">C-4</a>     |
| Cylinder Gp -Lift   | 192-5902    | <a href="#">27</a> | <a href="#">D-2</a>      |                         |
| Cylinder Gp -Lift (Automatic Blade Positioning)               | 234-9000    |                    | <a href="#">D-2</a>      |                         |
| Cylinder Gp -Tilt & Tip (LH)                                  | 264-3233    | <a href="#">10</a> | <a href="#">D-2</a>      |                         |
| Cylinder Gp -Tilt & Tip (RH)                                  | 151-5171    | <a href="#">11</a> | <a href="#">D-1</a>      |                         |
| Valve -Makeup - 836H  | 7J-7423     | <a href="#">7</a>  |                          | <a href="#">C-4</a>     |
| Valve -Makeup - 834H  | 7J-7423     | <a href="#">8</a>  | <a href="#">C-1, C-2</a> |                         |
| Valve Gp -Check (Dead Engine, Lift Arm Lower)                 | 9T-3096     | <a href="#">26</a> | <a href="#">D-5</a>      |                         |
| Valve Gp -Check (Pilot Operated)                              | 8J-5913     | <a href="#">8</a>  | <a href="#">D-1, D-2</a> |                         |
| Valve Gp -Combination (Hydraulic Lockout)                     | 163-0869    | <a href="#">28</a> | <a href="#">C-5</a>      |                         |
| Valve Gp -Main Control (3-Function) - 836H                    | 229-7315    | <a href="#">7</a>  |                          | <a href="#">C-4</a>     |
| Valve Gp -Main Control (3-Function) - 834H                    | 229-7313    | <a href="#">8</a>  | <a href="#">D-1</a>      |                         |
| Valve Gp -Manual (Coupler Pin Control) (Manual Lower)         | 112-1817    | <a href="#">28</a> | <a href="#">B-5</a>      |                         |
| Valve Gp -Pressure Reducing (Lowering Control)                | 154-8871    | <a href="#">28</a> | <a href="#">C-5</a>      |                         |
| Valve Gp -Relief (Line) - 836H                                | 4T-7581     | <a href="#">7</a>  |                          | <a href="#">C-4</a>     |
| Valve Gp -Relief (Main) - 836H                                | 192-0895    | <a href="#">7</a>  |                          | <a href="#">C-4</a>     |
| Valve Gp -Relief (Line) - 834H                                | 4T-7581     | <a href="#">8</a>  | <a href="#">C-2</a>      |                         |
| Valve Gp -Relief (Line) 1 - 834H                              | 6E-5950     | <a href="#">8</a>  | <a href="#">C-1, C-2</a> |                         |
| Valve Gp -Relief (Main) 1 - 834H                              | 192-0895    | <a href="#">8</a>  | <a href="#">C-1</a>      |                         |
| Valve Gp -Shuttle   | 6E-3373     | <a href="#">28</a> | <a href="#">C-5</a>      |                         |
| Valve Gp -Solenoid (Hydraulic Lockout)                        | 203-4157    |                    |                          |                         |

# COMPONENT LOCATION

## Page 2 of 2



| Description   | Part Number | Machine Location   | Schematic Location 834H  | Schematic Location 836H |
|---|-------------|--------------------|--------------------------|-------------------------|
| <b>Fan / Oil Cooler</b>                                 |             |                    |                          |                         |
| Cooler Gp -Hydraulic Oil - 836H                         | 215-4618    | <a href="#">10</a> |                          | <a href="#">A-3</a>     |
| Cooler Gp -Hydraulic Oil - 834H                         | 215-4618    | <a href="#">12</a> | <a href="#">A-4</a>      |                         |
| Filter Gp -Oil (Hydraulic Fan Pump, Motor Case Drain)   | 166-4647    | <a href="#">35</a> | <a href="#">A-5</a>      |                         |
| Motor Gp -Piston (Hydraulic Fan) - 836H                 | 213-5268    | <a href="#">11</a> |                          | <a href="#">A-3</a>     |
| Motor Gp -Piston (Hydraulic Fan) - 834H                 | 213-5268    | <a href="#">14</a> | <a href="#">A-4</a>      |                         |
| Pump Gp -Piston (Hydraulic Fan) - 836H                  | 228-3636    | <a href="#">12</a> |                          | <a href="#">A-2</a>     |
| Pump Gp -Piston (Hydraulic Fan) - 834H                  | 228-3636    | <a href="#">13</a> | <a href="#">A-4</a>      |                         |
| Valve -Check (Hydraulic Oil Cooler Bypass) - 836H       | 9T-5134     | <a href="#">10</a> |                          | <a href="#">A-3</a>     |
| Valve -Check (Hydraulic Oil Cooler Bypass) - 834H       | 9T-5134     | <a href="#">12</a> | <a href="#">A-4</a>      |                         |
| Valve As -Check (Brake Accumulator)                     | 9T-3752     | <a href="#">14</a> | <a href="#">F-2</a>      |                         |
| Valve Gp -Demand Fan - 836H                             | 191-8735    | <a href="#">10</a> |                          | <a href="#">B-2</a>     |
| Valve Gp -Demand Fan - 834H                             | 191-8735    | <a href="#">13</a> | <a href="#">B-3</a>      |                         |
| Valve Gp -Pump Control (Brake, Hydraulic Fan) - 836H    | 207-0695    | <a href="#">12</a> |                          | <a href="#">A-2</a>     |
| Valve Gp -Pump Control (Brake, Hydraulic Fan) - 834H    | 207-0695    | <a href="#">13</a> | <a href="#">A-4</a>      |                         |
| Valve Gp -Check (Reversing Fan)                         | 128-2780    | <a href="#">11</a> |                          | <a href="#">A-2</a>     |
| Valve Gp -Diverter (Reversing Fan)                      | 178-9037    | <a href="#">11</a> |                          | <a href="#">A-2</a>     |
| Valve Gp -Fan Reversing                                 | 162-2191    | <a href="#">11</a> |                          | <a href="#">B-3</a>     |
| Valve Gp -Relief (Crossover, Reversing Fan)             | 166-8498    | <a href="#">11</a> |                          | <a href="#">A-3</a>     |
| Valve Gp -Relief (Hydraulic Fan Motor)                  | 166-8498    | <a href="#">11</a> |                          | <a href="#">A-2</a>     |
| Valve Gp -Solenoid (Reversing Fan)                      | 152-8340    | <a href="#">11</a> |                          | <a href="#">B-2</a>     |
| <b>Brake System</b>                                     |             |                    |                          |                         |
| Accumulator Gp -Brake (Charged) - 836H                  | 220-1432    | <a href="#">13</a> |                          | <a href="#">F-4</a>     |
| Accumulator Gp -Brake (Charged) - 834H                  | 220-1432    | <a href="#">15</a> | <a href="#">F-7</a>      |                         |
| Brake Gp -Parking - 836H                                | 174-1552    | <a href="#">14</a> |                          | <a href="#">F-4</a>     |
| Brake Gp -Parking - 834H                                | 174-1552    | <a href="#">16</a> | <a href="#">F-6</a>      |                         |
| Control Gp -Foot Brake - 836H                           | 169-8257    | <a href="#">20</a> |                          | <a href="#">F-4</a>     |
| Control Gp -Foot Brake - 834H                           | 169-8258    | <a href="#">17</a> | <a href="#">F-7</a>      |                         |
| Filter Gp -Oil - 836H                                   | 287-8403    | <a href="#">21</a> |                          | <a href="#">F-5</a>     |
| Filter Gp -Oil - 834H                                   | 287-8403    | <a href="#">18</a> | <a href="#">F-8</a>      |                         |
| Pump Gp -Gear (Axle Oil Cooler Fan)                     | 260-3160    | <a href="#">19</a> | <a href="#">A-5</a>      |                         |
| Pump Gp -Gear (Implement, Pilot, Brake)                 | 190-8756    | <a href="#">36</a> | <a href="#">A-5, D-6</a> | <a href="#">D-4</a>     |
| Screen As   | 9T-9227     | <a href="#">33</a> | <a href="#">A-6</a>      |                         |
| Sensor Gp -Temperature (Front Axle)                     | 131-0427    | <a href="#">25</a> | <a href="#">F-8</a>      | <a href="#">F-5</a>     |
| Sensor Gp -Temperature (Rear Axle)                      | 131-0427    | <a href="#">21</a> | <a href="#">E-8</a>      |                         |
| Switch As -Pressure (Brake Accumulator Charge) - 836H   | 175-3244    | <a href="#">13</a> |                          | <a href="#">E-4</a>     |
| Switch As -Pressure (Brake Accumulator Charging) - 834H | 175-3244    | <a href="#">22</a> | <a href="#">E-7</a>      |                         |
| Switch As -Pressure (Parking Brake Oil) - 836H          | 174-4312    | <a href="#">22</a> |                          | <a href="#">E-4</a>     |
| Switch As -Pressure (Parking Brake Oil) - 834H          | 174-4312    | <a href="#">23</a> | <a href="#">E-6</a>      |                         |
| Tank Gp -Hydraulic                                      | 152-5689    | <a href="#">34</a> | <a href="#">A-6</a>      |                         |
| Valve Gp -Accumulator Charging (Brake) - 836H           | 235-0252    | <a href="#">3</a>  |                          | <a href="#">E-5</a>     |
| Valve Gp -Accumulator Charging (Brake) - 834H           | 235-0251    | <a href="#">22</a> | <a href="#">E-8</a>      |                         |
| Valve Gp -Brake Control (Parking) - 836H                | 106-1774    | <a href="#">22</a> |                          | <a href="#">E-4</a>     |
| Valve Gp -Brake Control (Parking) - 834H                | 106-1774    | <a href="#">23</a> | <a href="#">E-6</a>      |                         |

## 834H Pressure Tap Locations

| Tap Number         | Description                 | Schematic Location       |
|--------------------|-----------------------------|--------------------------|
| <a href="#">AA</a> | Steer Pilot Supply          | <a href="#">F-8</a>      |
| <a href="#">BB</a> | Steep pump Cutoff           | <a href="#">A-7</a>      |
| <a href="#">CC</a> | Normal Steer Pump           | <a href="#">C-6, C-7</a> |
| <a href="#">DD</a> | Implement Pump              | <a href="#">B-5</a>      |
| <a href="#">EE</a> | Front Service Brake         | <a href="#">F-8</a>      |
| <a href="#">FE</a> | Rear Service Brake          | <a href="#">F-8</a>      |
| <a href="#">GG</a> | Lift-Head End               | <a href="#">D-4</a>      |
| <a href="#">HH</a> | Lift-Rod End                | <a href="#">D-4</a>      |
| <a href="#">II</a> | Tilt-Head End (RH Cylinder) | <a href="#">D-1</a>      |
| <a href="#">JJ</a> | Tilt-Rod End (RH Cylinder)  | <a href="#">D-2</a>      |
| <a href="#">KK</a> | Tip-Rod End (LH Cylinder)   | <a href="#">D-1</a>      |
| <a href="#">LL</a> | Implement Pilot Supply      | <a href="#">C-4</a>      |
| <a href="#">MM</a> | Fan Signal                  | <a href="#">B-4</a>      |
| <a href="#">NN</a> | Reduced Pilot Supply        | <a href="#">C-5</a>      |
| <a href="#">PP</a> | Oil Sampling                | <a href="#">E-7</a>      |
| <a href="#">QQ</a> | Brake Accumulator-Rear      | <a href="#">E-6</a>      |
| <a href="#">RR</a> | Brake Accumulator-Front     | <a href="#">F-7</a>      |

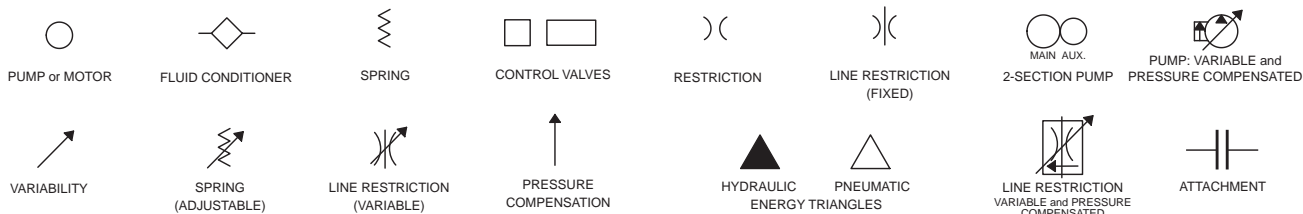
## 836H Pressure Tap Locations

| Tap Number         | Description             | Schematic Location  |
|--------------------|-------------------------|---------------------|
| <a href="#">AA</a> | Steer Pilot Supply      | <a href="#">F-5</a> |
| <a href="#">BB</a> | Steep pump Cutoff       | <a href="#">A-7</a> |
| <a href="#">CC</a> | Normal Steer Pump       | <a href="#">C-7</a> |
| <a href="#">DD</a> | Implement Pump          | <a href="#">B-5</a> |
| <a href="#">EE</a> | Front Service Brake     | <a href="#">F-5</a> |
| <a href="#">GG</a> | Lift-Head End           | <a href="#">D-4</a> |
| <a href="#">HH</a> | Lift-Rod End            | <a href="#">D-4</a> |
| <a href="#">LL</a> | Implement Pilot Supply  | <a href="#">C-4</a> |
| <a href="#">MM</a> | Fan Signal              | <a href="#">B-2</a> |
| <a href="#">NN</a> | Reduced Pilot Supply    | <a href="#">C-5</a> |
| <a href="#">PP</a> | Oil Sampling            | <a href="#">E-4</a> |
| <a href="#">RR</a> | Brake Accumulator-Front | <a href="#">E-4</a> |

# FLUID POWER SYMBOLS



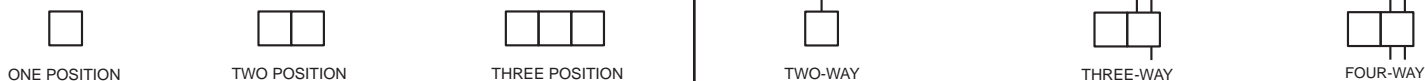
## BASIC COMPONENT SYMBOLS



## VALVE ENVELOPES

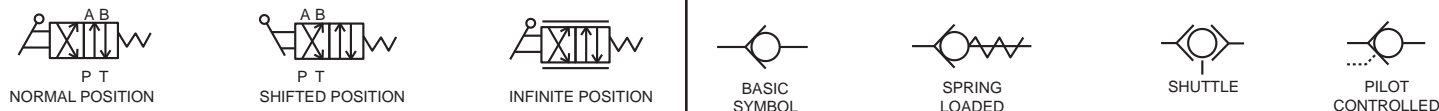
## VALVES

## VALVE PORTS



## CONTROL VALVES

## CHECK VALVES



## FLUID STORAGE RESERVOIRS



## MEASUREMENT

## ROTATING SHAFTS



## COMBINATION CONTROLS



## MANUAL CONTROL SYMBOLS



## RELEASED PRESSURE

## PILOT CONTROL SYMBOLS

## REMOTE SUPPLY PRESSURE



## ACCUMULATORS

## CROSSING AND JOINING LINES

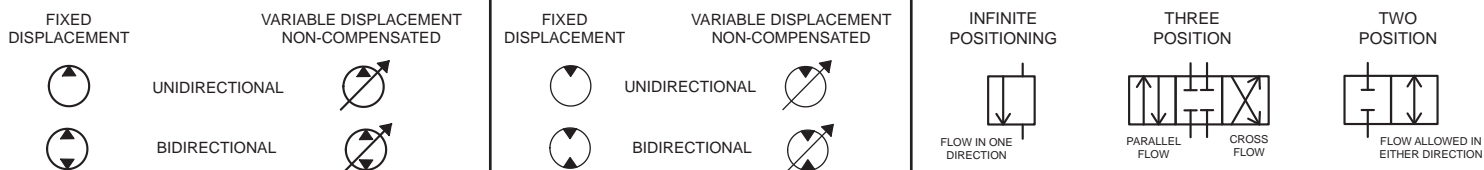
## HYDRAULIC AND PNEUMATIC CYLINDERS



## HYDRAULIC PUMPS

## HYDRAULIC MOTORS

## INTERNAL PASSAGEWAYS



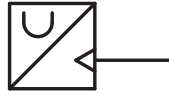
# ELECTRICAL SYMBOLS



## Hydraulic Symbols (Electrical)



Transducer  
(Fluid)



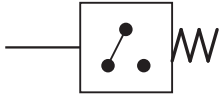
Transducer  
(Gas / Air)



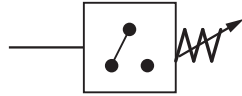
Generator



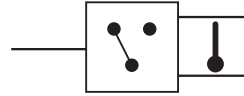
Electric Motor



Pressure Switch



Pressure Switch  
(Adjustable)

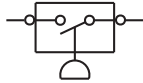


Temperature Switch

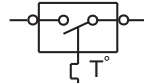


Electrical Wire

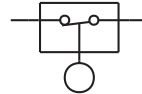
## Electrical Symbols (Electrical)



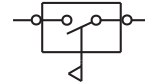
Pressure  
Symbol



Temperature  
Symbol



Level  
Symbol

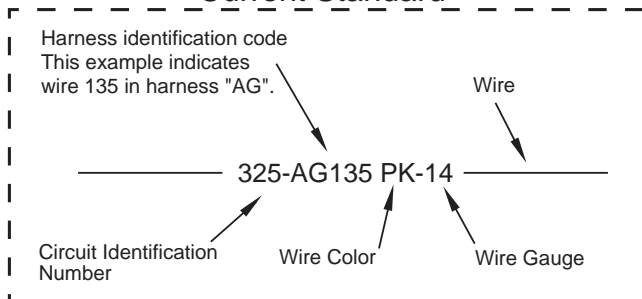


Flow  
Symbol

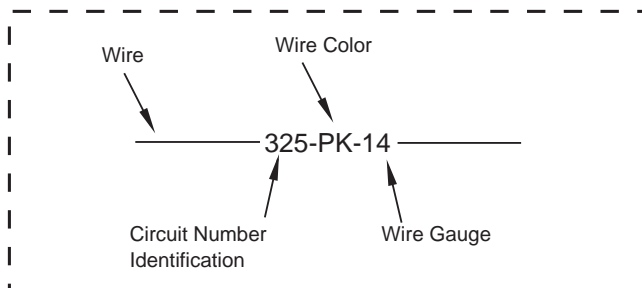
## Wire Number Identification Codes

### Electrical Schematic Example

#### Current Standard

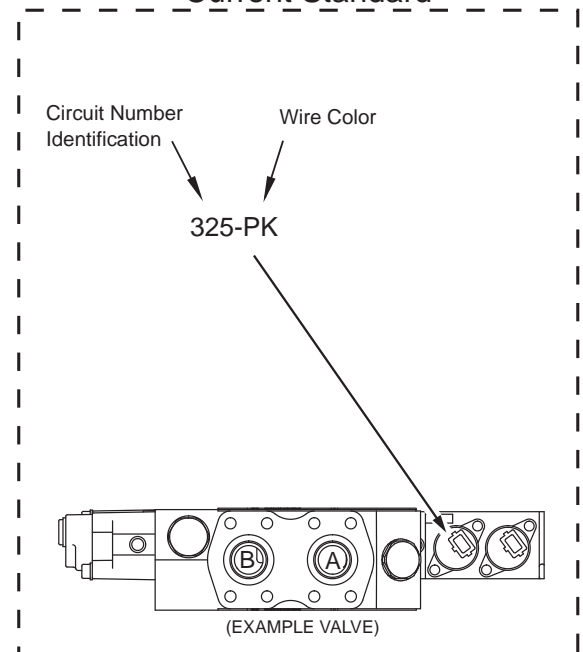


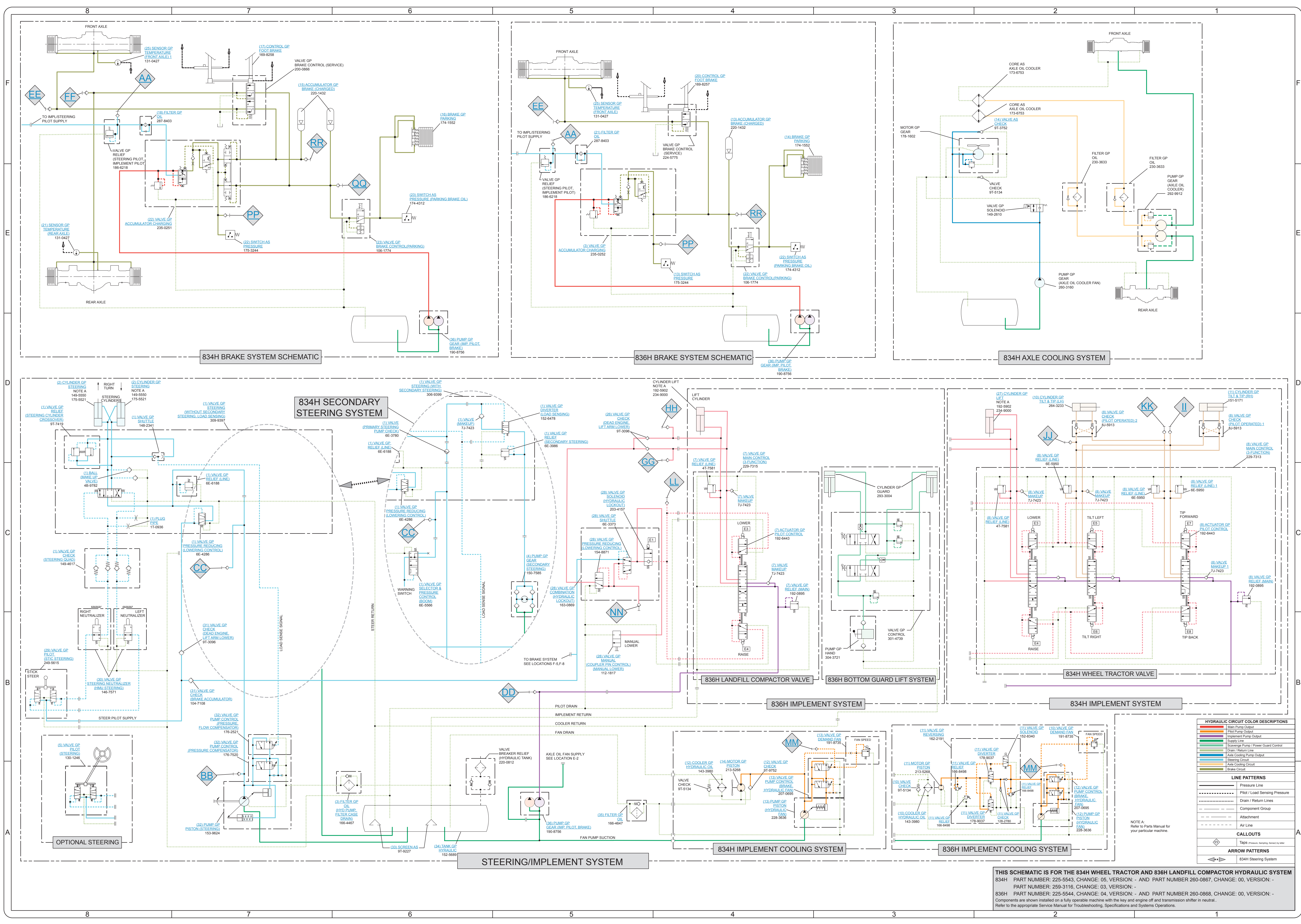
#### Previous Standard



### Hydraulic Schematic Example

#### Current Standard





| HYDRAULIC CIRCUIT COLOR DESCRIPTIONS   |                                     |
|--|-------------------------------------|
| <span style="color: red;">—</span>     | Main Pump Output                    |
| <span style="color: blue;">—</span>    | Implement Pump Output               |
| <span style="color: green;">—</span>   | Supply Line                         |
| <span style="color: orange;">—</span>  | Scavenge Pump / Power Guard Control |
| <span style="color: purple;">—</span>  | Drain / Return Line                 |
| <span style="color: yellow;">—</span>  | Axle Cooling Pump Output            |
| <span style="color: cyan;">—</span>    | Steering Circuit                    |
| <span style="color: magenta;">—</span> | Axle Cooling Circuit                |
| <span style="color: brown;">—</span>   | Brake Circuit                       |

| LINE PATTERNS   |                               |
|---|-------------------------------|
| <span style="border-bottom: 1px solid black; width: 20px; display: inline-block;"></span>         | Pressure Line                 |
| <span style="border-bottom: 1px dashed black; width: 20px; display: inline-block;"></span>        | Pilot / Load Sensing Pressure |
| <span style="border-bottom: 1px dotted black; width: 20px; display: inline-block;"></span>        | Drain / Return Line           |
| <span style="border-bottom: 1px long-dashed black; width: 20px; display: inline-block;"></span>   | Component Group               |
| <span style="border-bottom: 1px dash-dot black; width: 20px; display: inline-block;"></span>      | Attachment                    |
| <span style="border-bottom: 1px long-dash-dot black; width: 20px; display: inline-block;"></span> | Air Line                      |

| CALLOUTS   |  |
|--|--|
| <span style="border: 1px solid black; border-radius: 50%; padding: 2px; width: 10px; height: 10px; display: inline-block;"></span> | Taps (Pressure Sampling, Bleed) by Meter |

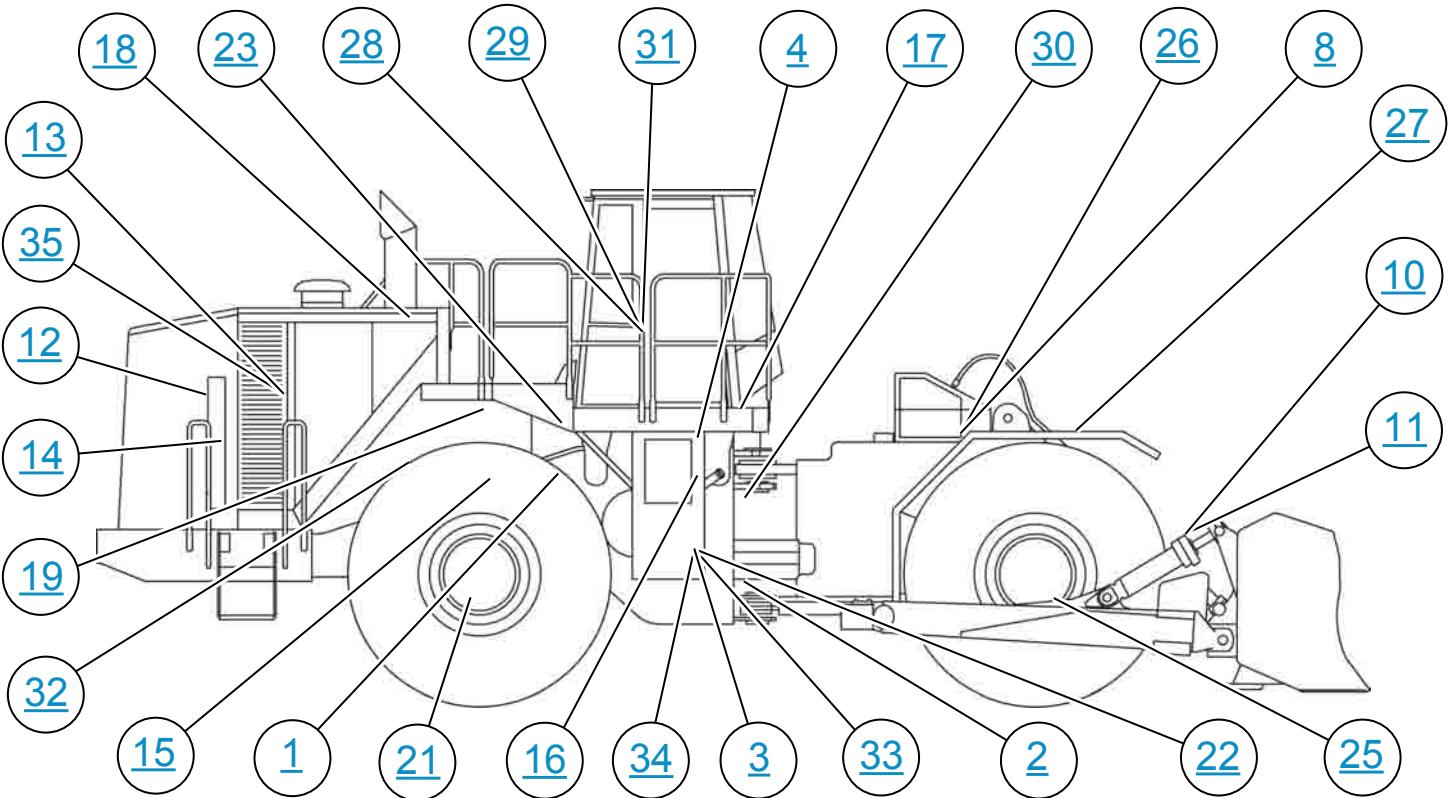
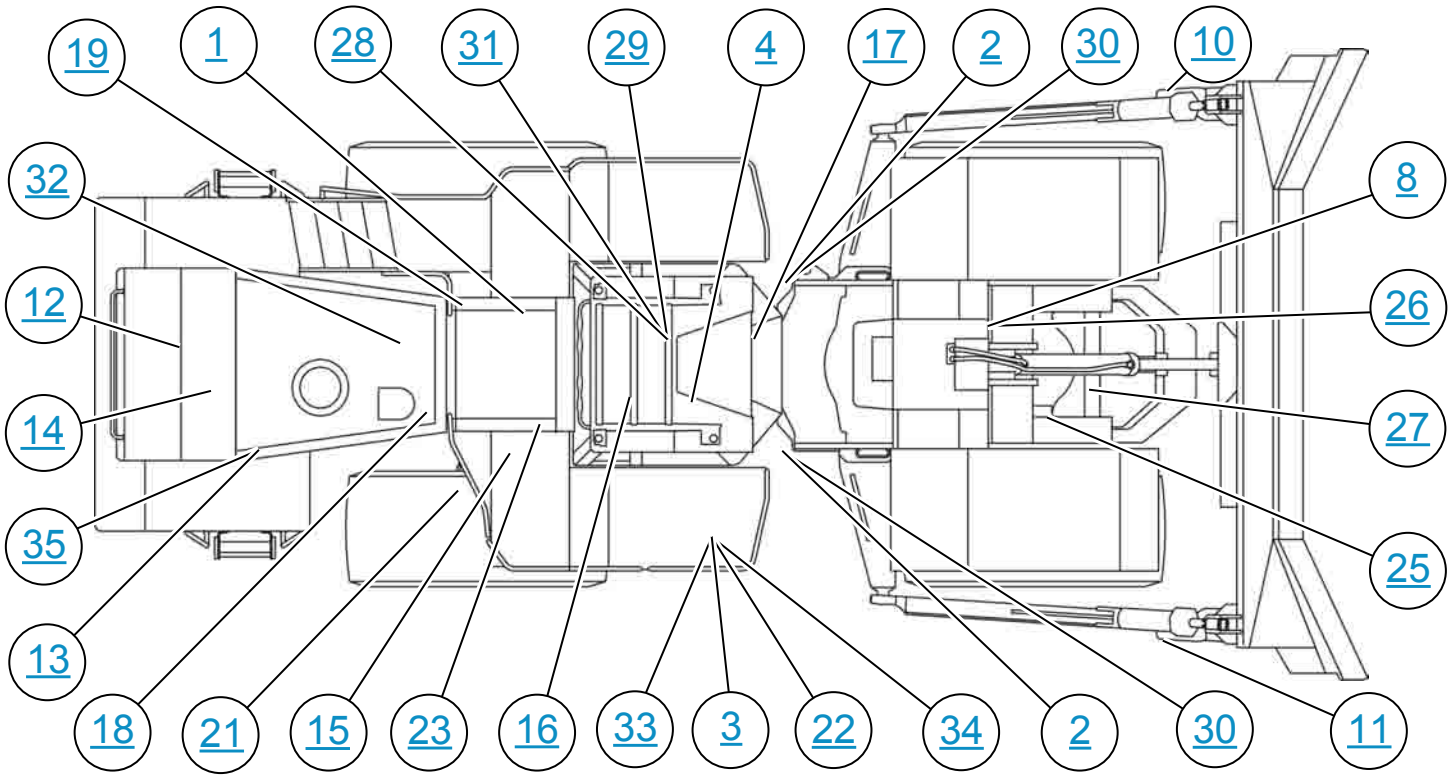
  

| ARROW PATTERNS  |                      |
|---|----------------------|
| <span style="display: inline-block; width: 10px; height: 10px; border: 1px solid black; margin-right: 5px;"></span> <span style="display: inline-block; width: 10px; height: 10px; border: 1px solid black; margin-right: 5px;"></span> <span style="display: inline-block; width: 10px; height: 10px; border: 1px solid black; margin-right: 5px;"></span> | 834H Steering System |

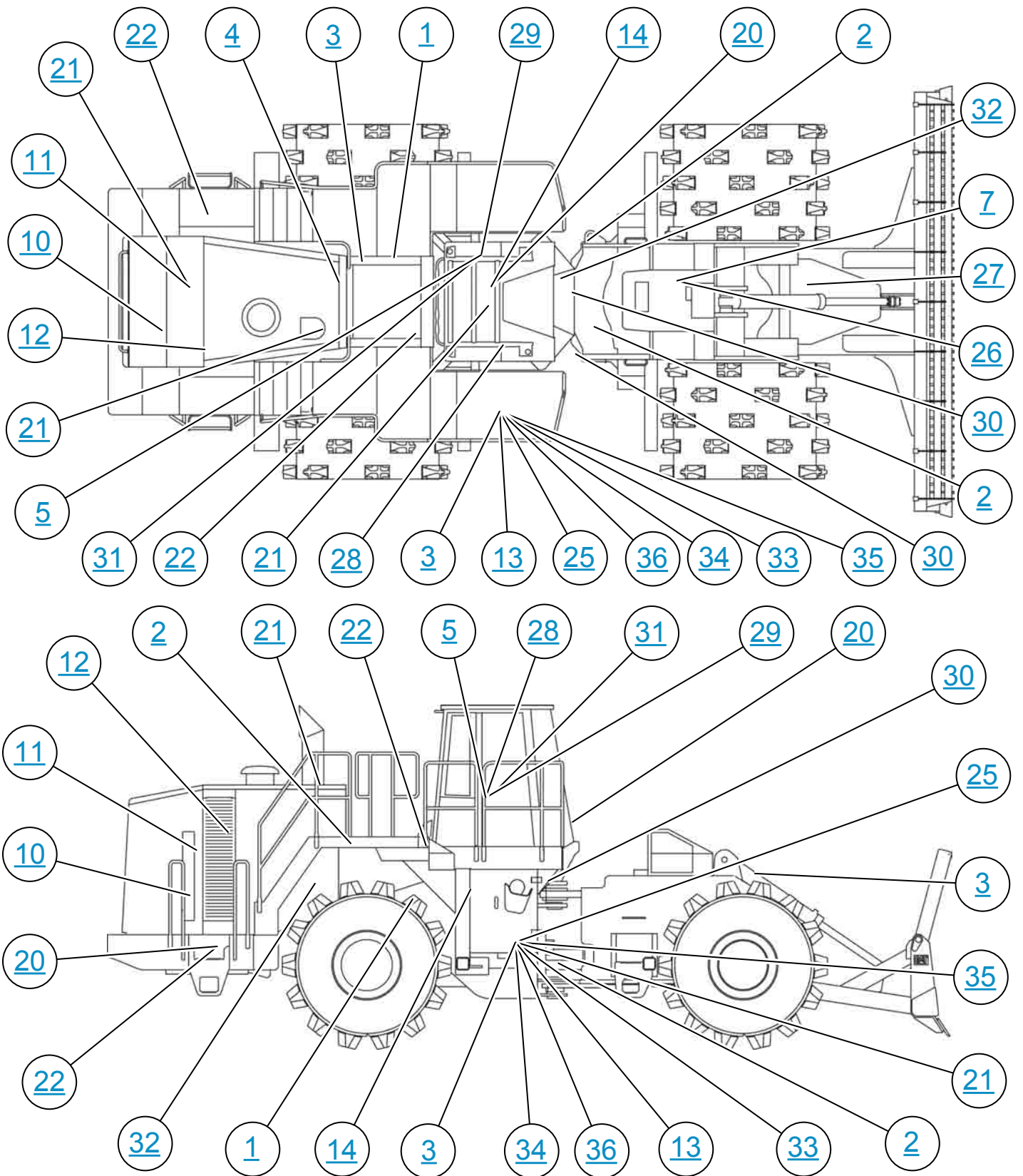
**THIS SCHEMATIC IS FOR THE 834H WHEEL TRACTOR AND 836H LANDFILL COMPACTOR HYDRAULIC SYSTEM**  
 834H PART NUMBER: 225-5543, CHANGE: 05, VERSION: - AND PART NUMBER 260-0867, CHANGE: 00, VERSION: -  
 836H PART NUMBER: 225-5544, CHANGE: 04, VERSION: - AND PART NUMBER 260-0868, CHANGE: 00, VERSION: -  
 Components are shown installed on a fully operable machine with the key and engine off and transmission shifter in neutral.  
 Refer to the appropriate Service Manual for Troubleshooting, Specifications and Systems Operations.



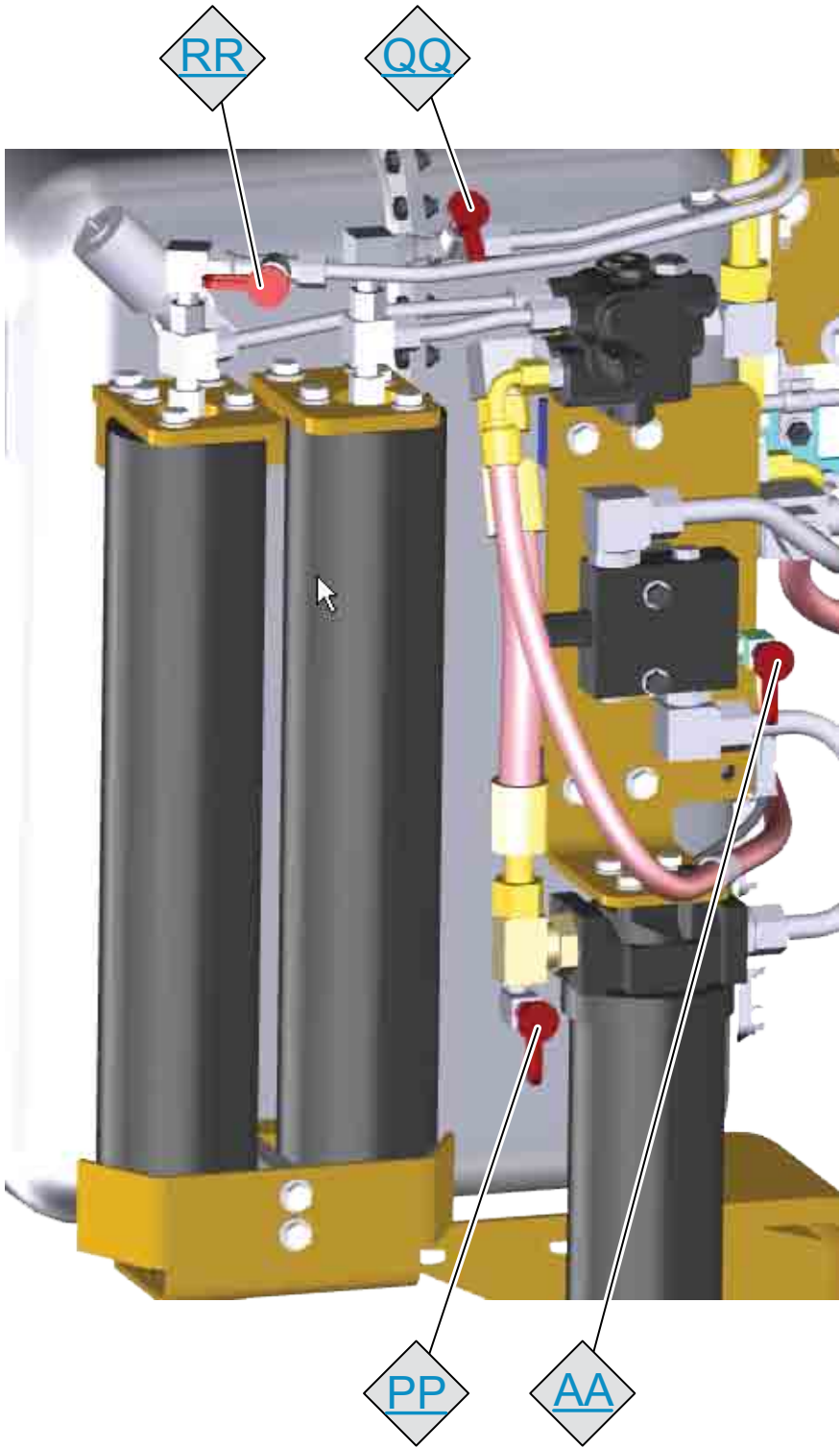
# MACHINE COMPONENT LOCATIONS - 834H



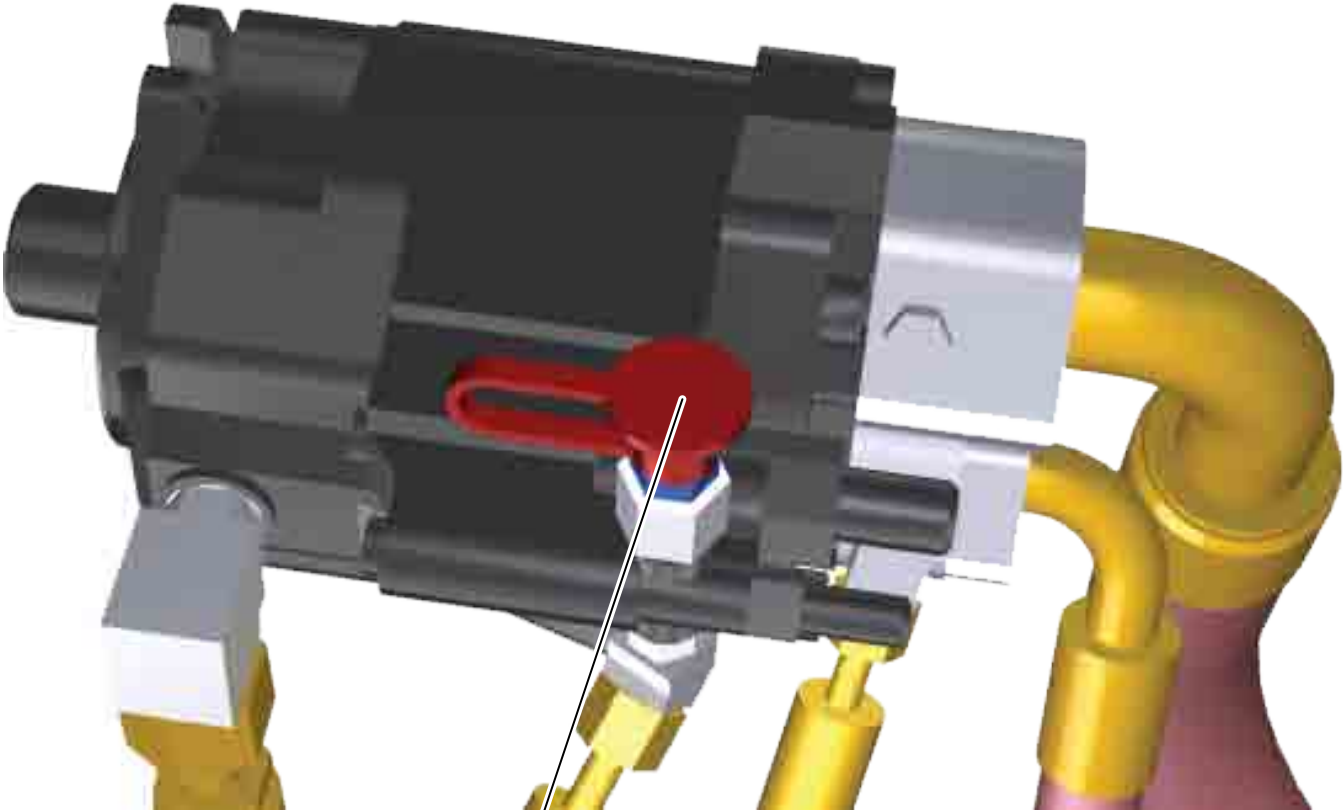
# MACHINE COMPONENT LOCATIONS - 836H



# BRAKE ACCUMULATORS

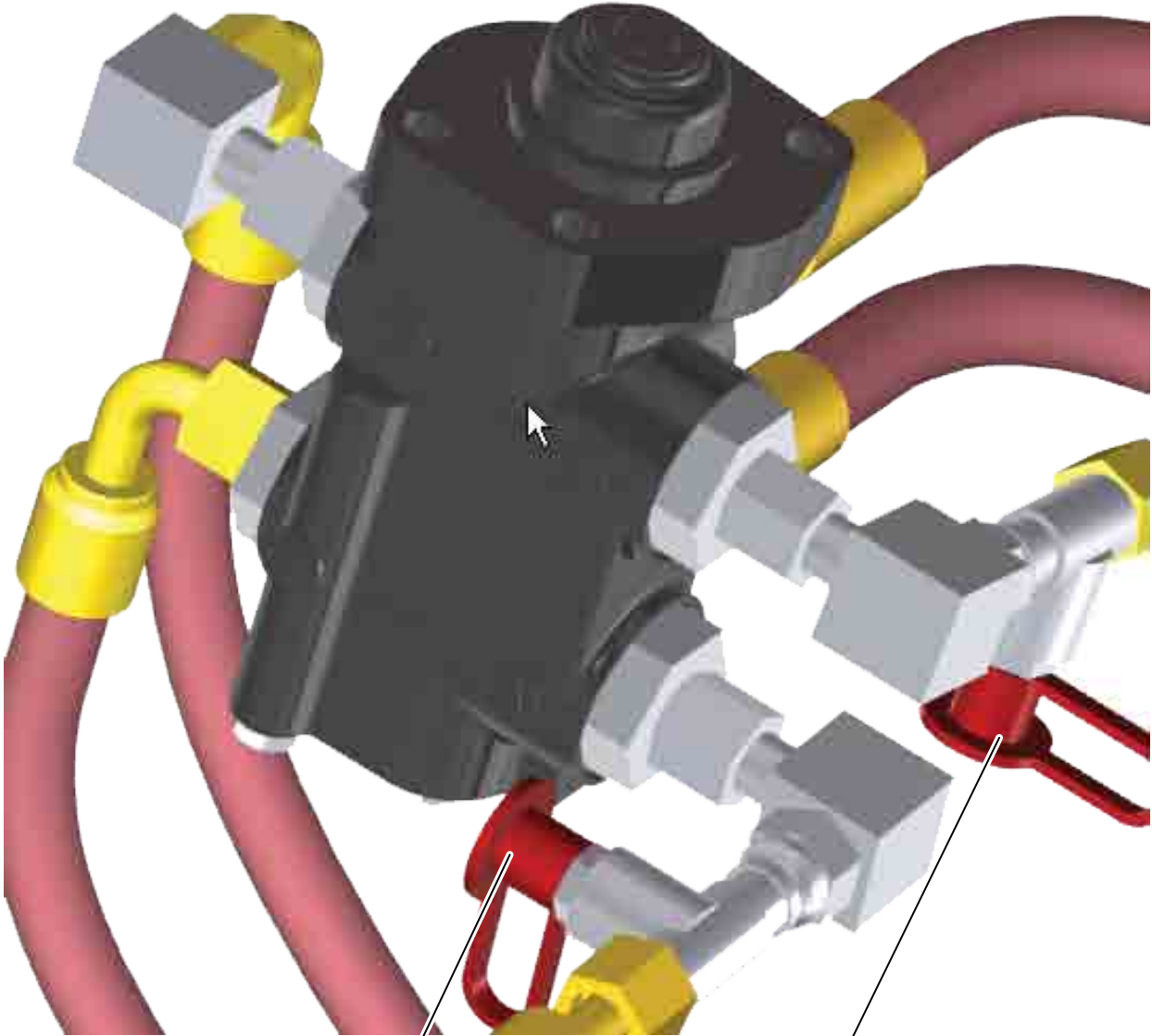


# FAN PUMP



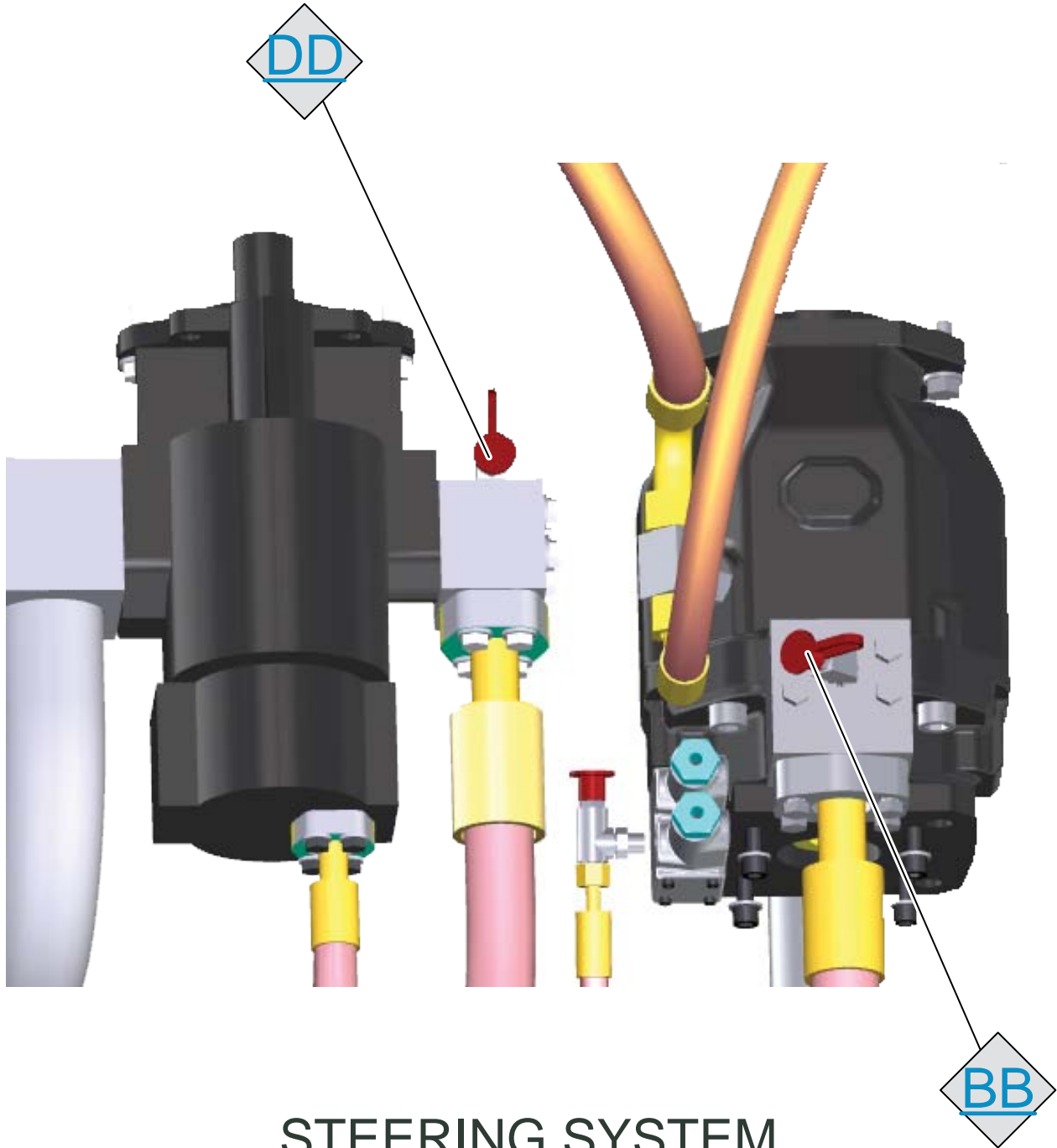
MM

# FOOT VALVE, BRAKE



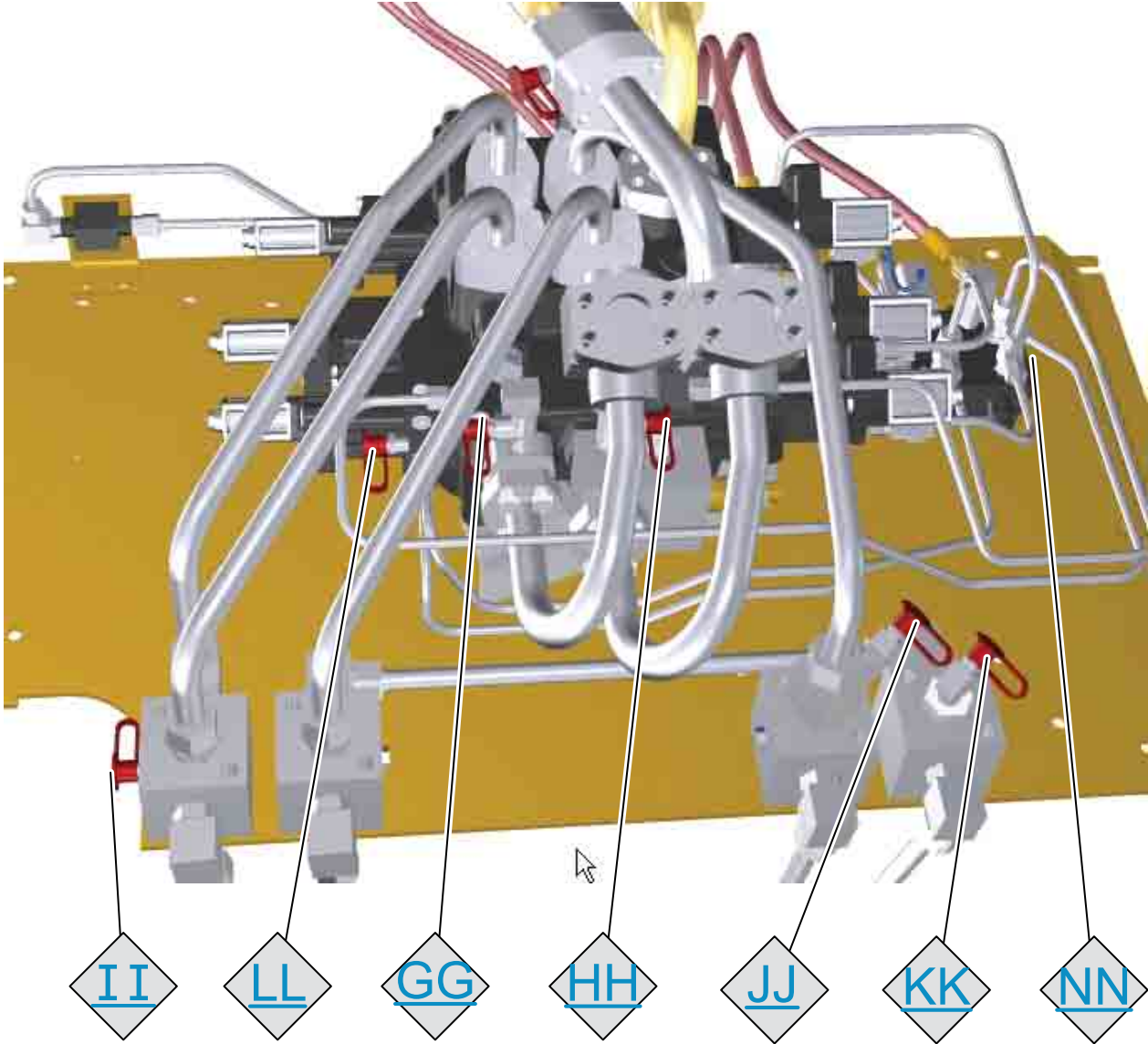
EE

FF



STEERING SYSTEM

# IMPLEMENT VALVE



# STEERING VALVE

