

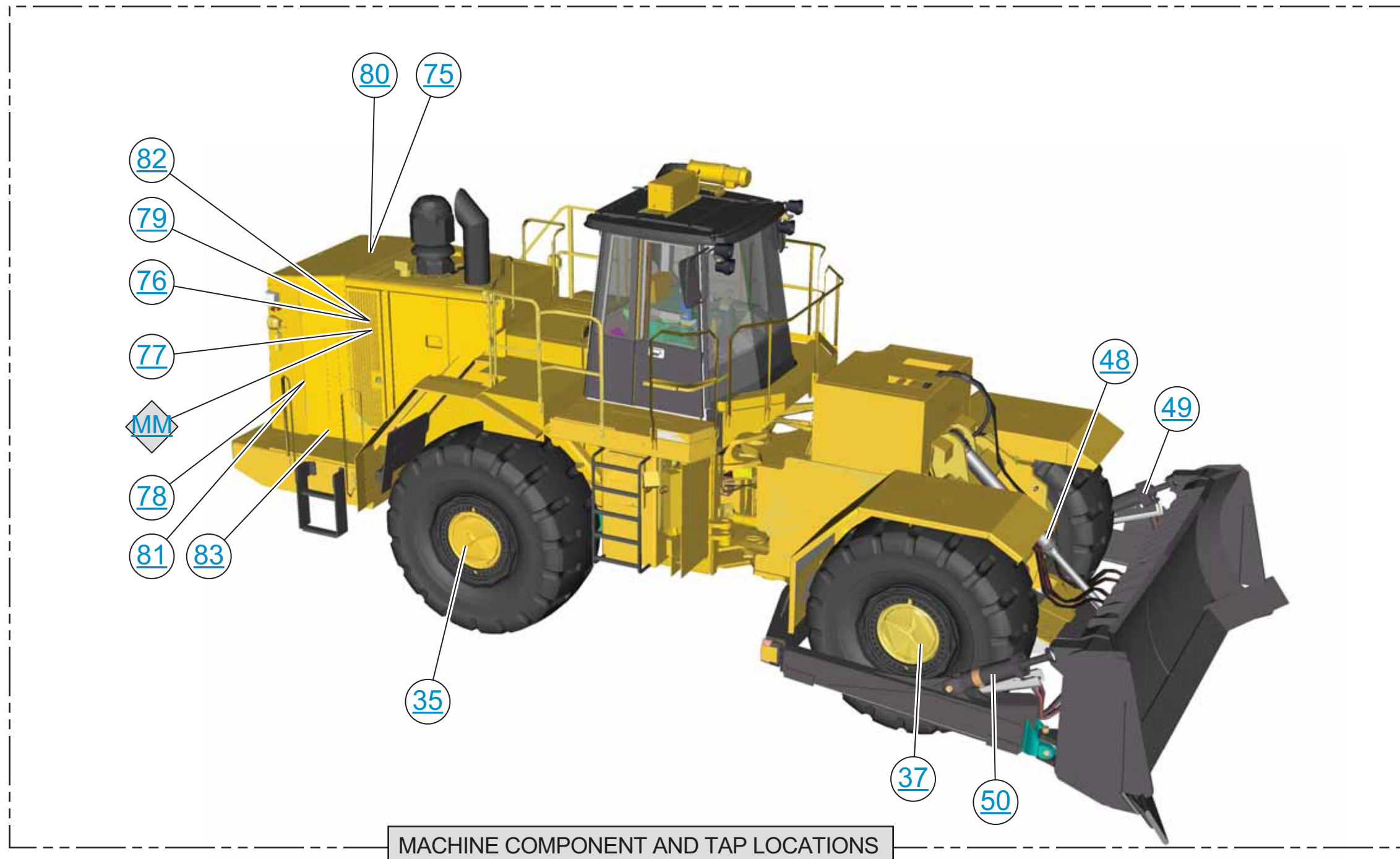
Schematic

834H Wheel Tractor Hydraulic System

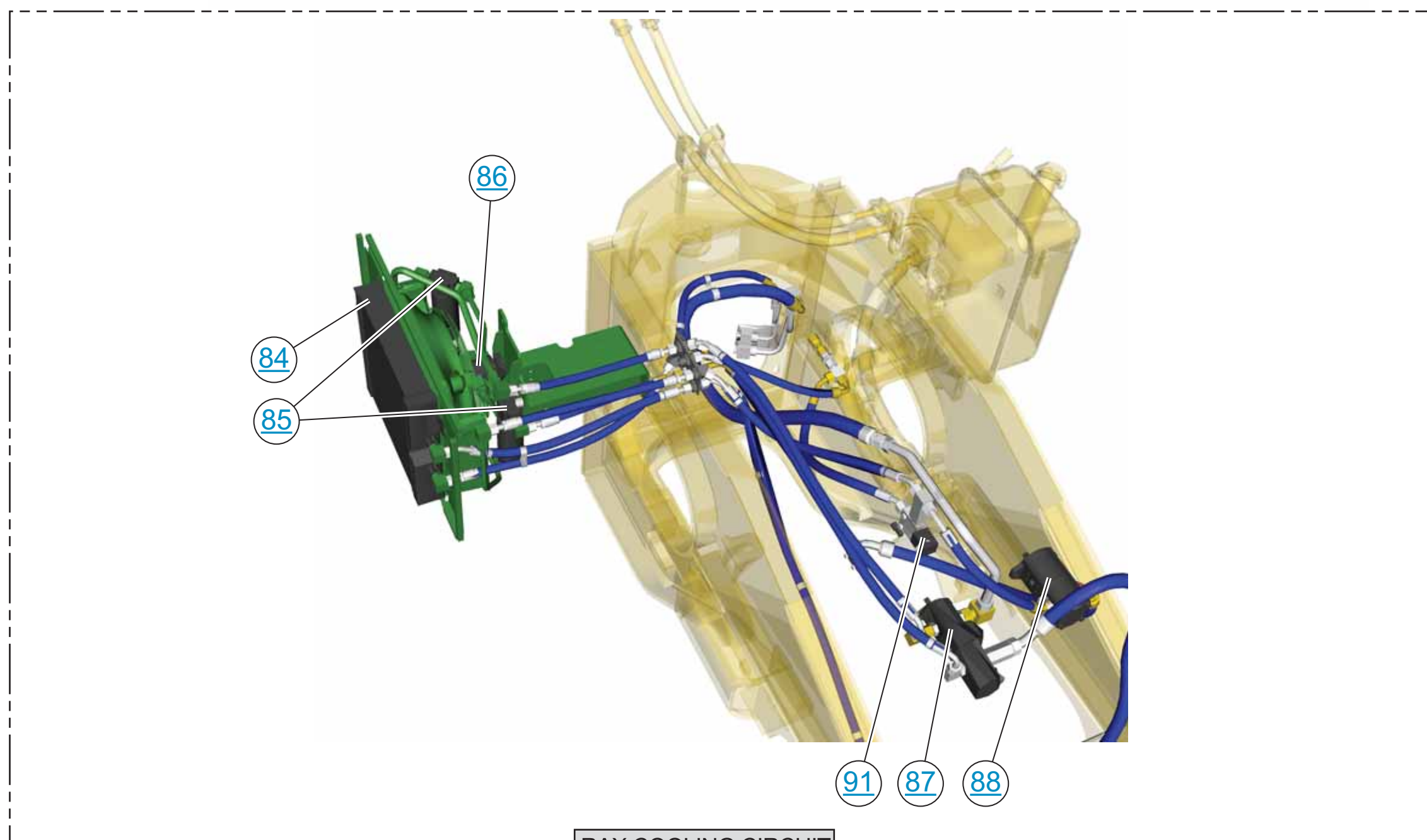
BTX1000-UP

© 2013 Caterpillar, All Rights Reserved

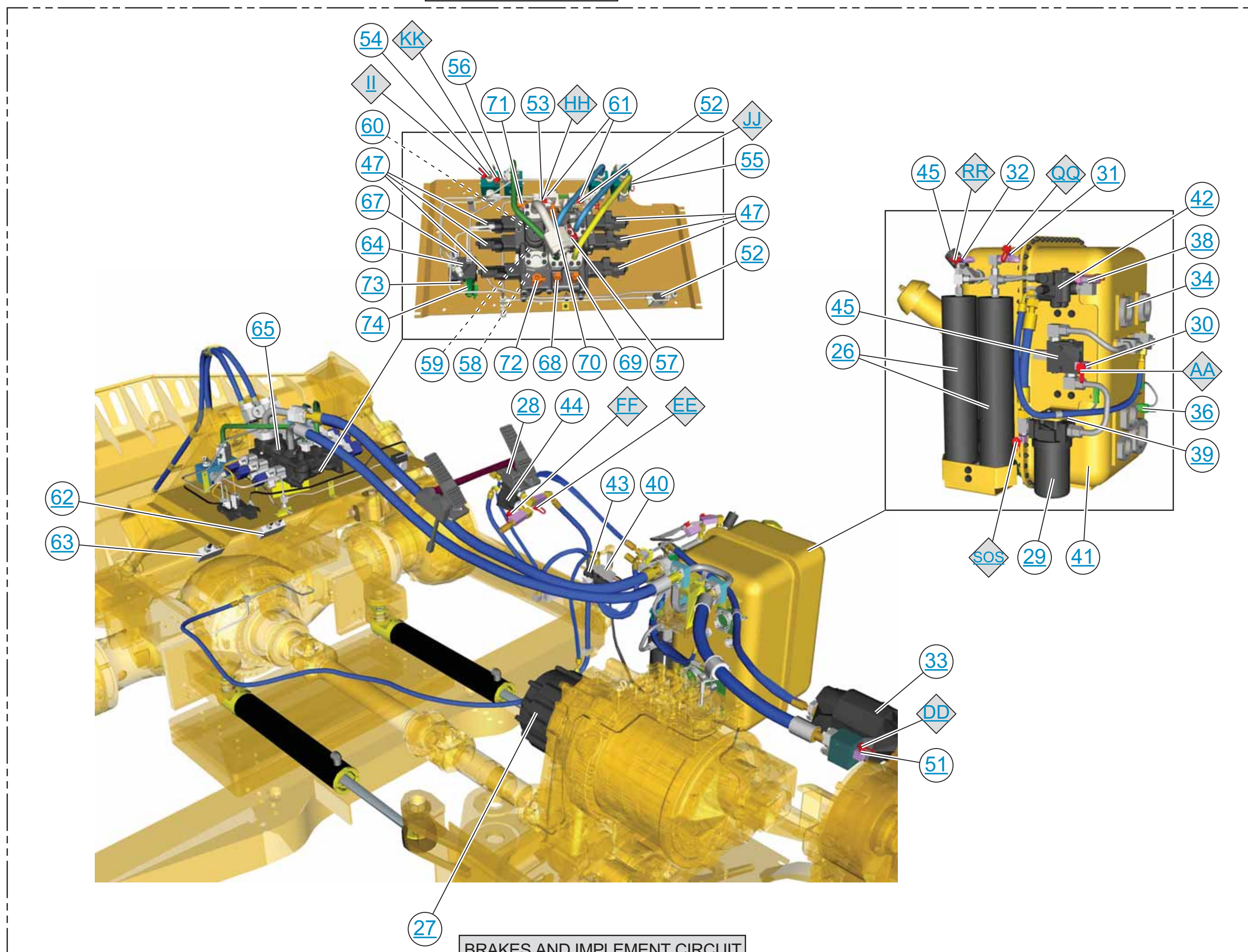
Printed in U.S.A.



MACHINE COMPONENT AND TAP LOCATIONS



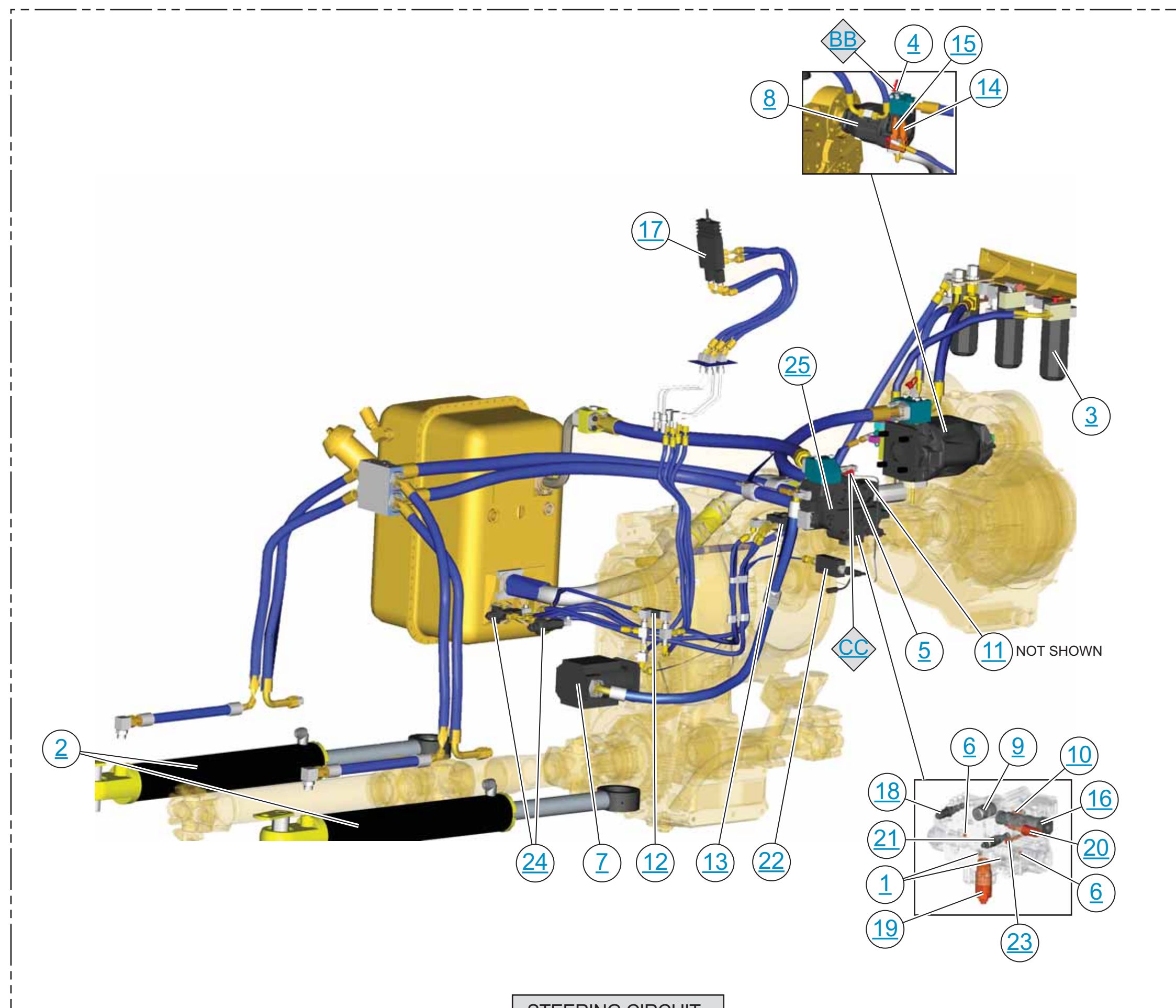
RAK COOLING CIRCUIT



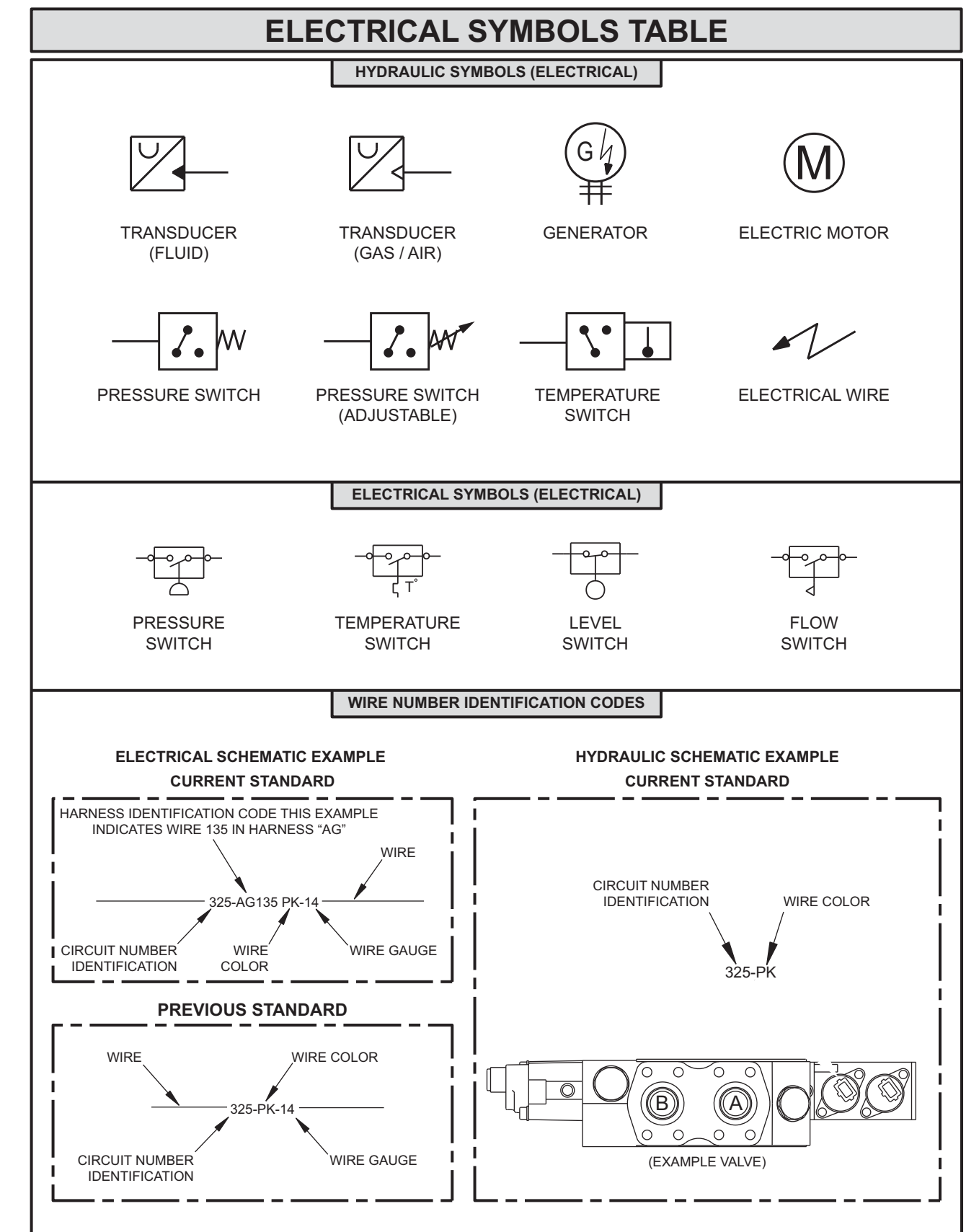
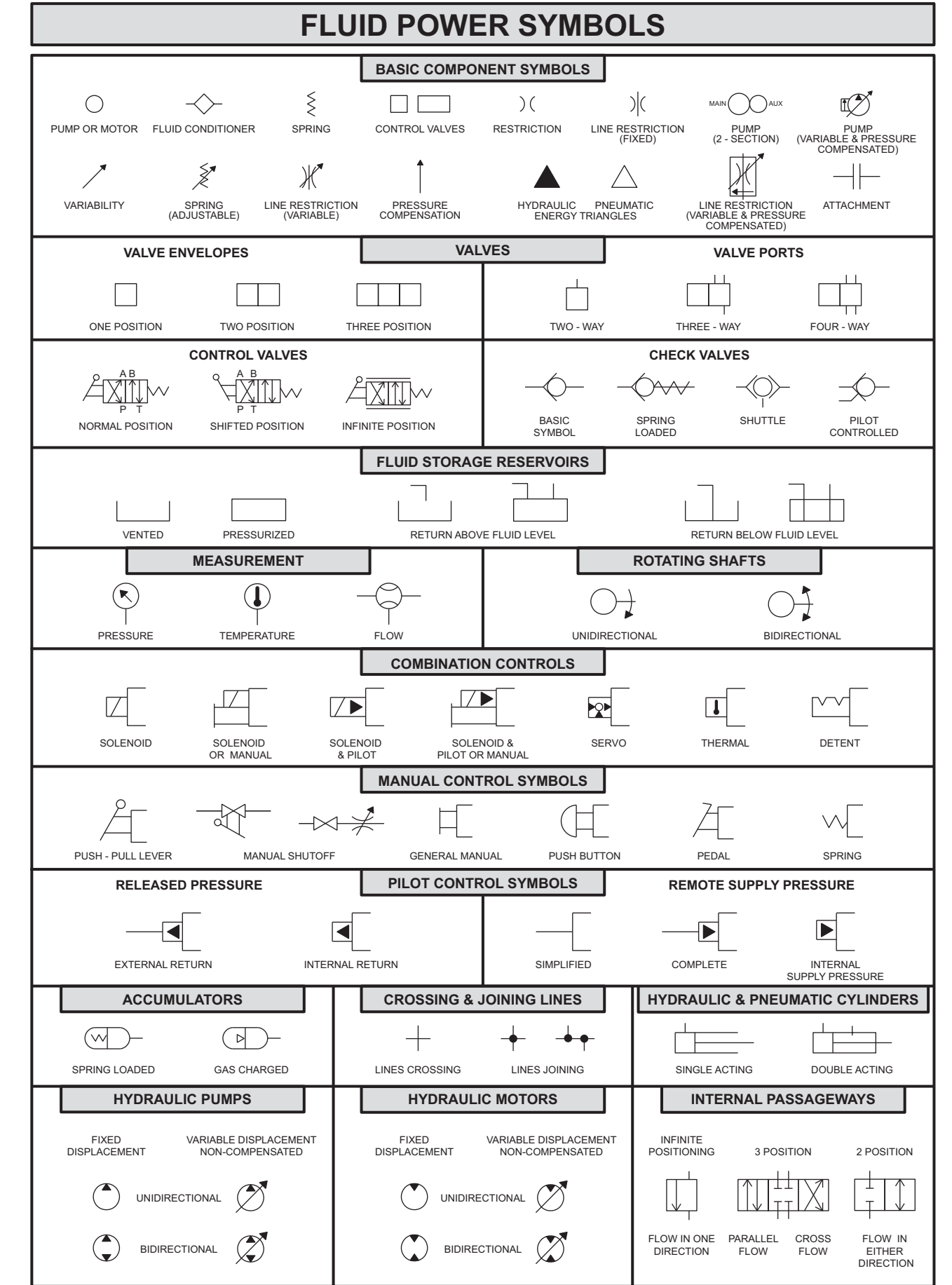
BRAKES AND IMPLEMENT CIRCUIT

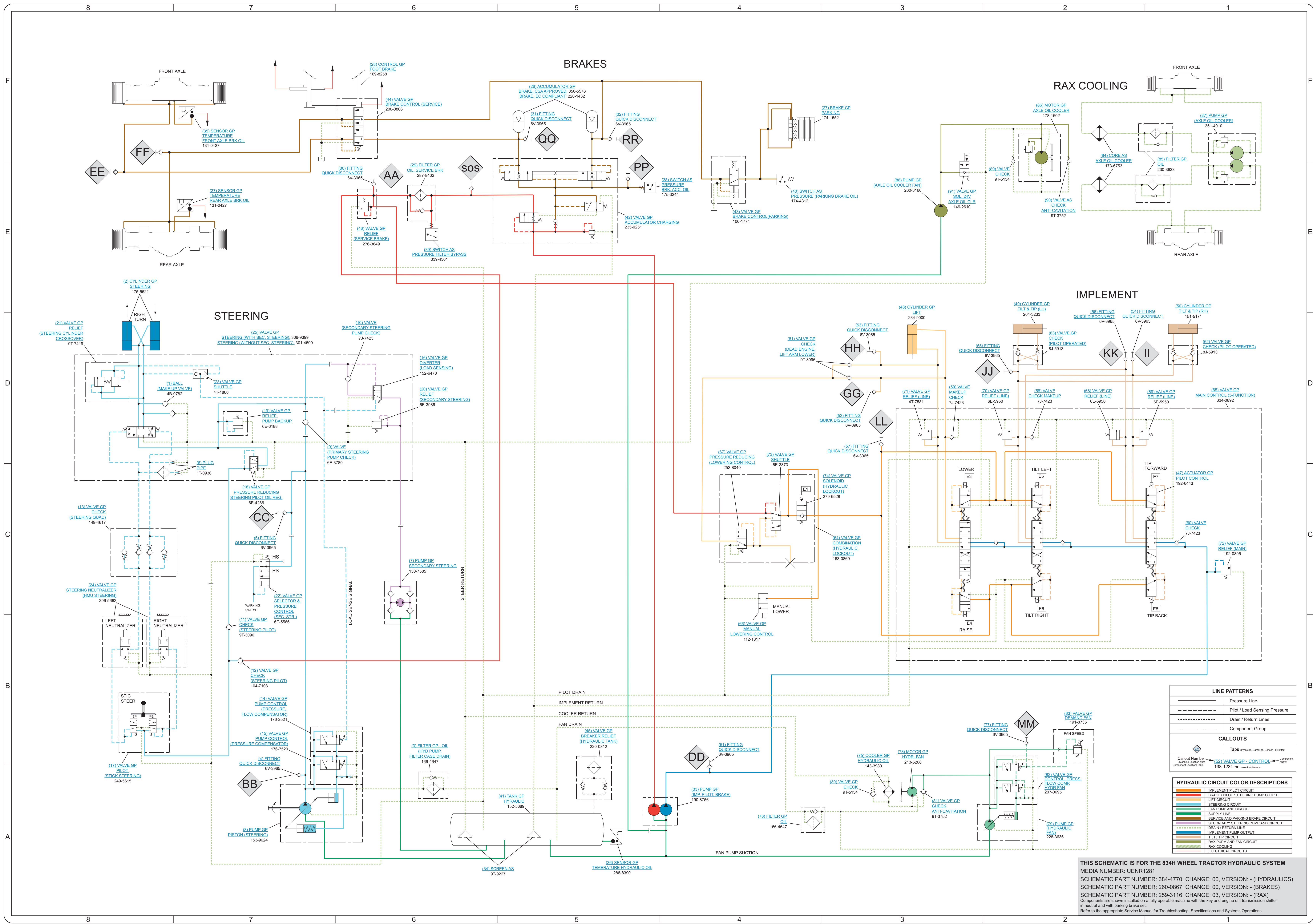
Description	Part Number	Machine Location	Schematic Location
STEERING			
Ball	48-9782	1	D-8
Cylinder Gp - Steering	175-5521	2	D-8
Fiber Gp - Oil Steering Pump Case Drain	106-4647	3	A-8
Fitting - Quick Disconnect, Tap BB	8V-3965	4	A-7
Fitting - Quick Disconnect, Tap CC	8V-3965	5	C-2
Plug - Pipe	175-0936	6	C-2
Pump Gp - Secondary Steering	150-7580	7	E-8
Pump Gp - Steering	150-9824	8	A-2
Valve Gp - Check, Primary Steering Pump Check	8E-3766	9	D-2
Valve Gp - Check, Sec. Steering Pump Check	73-7423	10	D-6
Valve Gp - Check, Steering Pilot	8T-3096	11	B-7
Valve Gp - Check, Steering Pilot	104-7101	12	B-7
Valve Gp - Check, Steering Quad	148-4617	13	C-8
Valve Gp - Control, Flow Compensator	170-7521	14	B-7
Valve Gp - Control, Press. Compensator	170-7523	15	B-7
Valve Gp - Diverter, Load Sense	152-6478	16	D-8
Valve Gp - Pilot, Steering, Stick	249-8615	17	B-8
Valve Gp - Press. Reducing, 3rd Pilot Oil Reg.	8E-4286	18	D-7
Valve Gp - Relief, Pump Backup	8E-6188	19	D-7
Valve Gp - Relief, Secondary Steering	8E-3986	20	D-8
Valve Gp - Relief, Steerer Cylinder Crossover	9T-7419	21	D-8
Valve Gp - Selector/Press. Control, Sec. Steering	8E-6566	22	C-7
Valve Gp - Shuttle, (Load Signal, Str Cylinder)	4T-1860	23	D-8
Valve Gp - Steering, Nocturnal	296-5662	24	B-8
Valve Gp - Steering, With Secondary Steering	306-9399	25	B-8
Valve Gp - Steering, Without Secondary Steering	301-4991	25	D-7
BRAKES / PILOT TANK			
Accumulator Gp - Brake, CSA Approved	170-0576	26	E-5
Brake Gp - Parking	174-1552	27	E-8
Control Gp - Foot Brake	169-8258	28	E-8
Fiber Gp - Oil Service Brake	287-8402	29	E-8
Fitting - Quick Disconnect, Tap AA	8V-3965	30	E-8
Fitting - Quick Disconnect, Tap CC	8V-3965	31	E-8
Fitting - Quick Disconnect, Tap RR	8V-3965	32	E-8
Pump Gp - Implement, Brake, Pilot	190-8750	33	A-4
Sensor As	9T-9227	34	A-5
Sensor Gp - Temperature, Front Axle Brake Oil	131-0427	35	F-7
Sensor Gp - Temperature, Hydraulic Oil	288-8390	36	A-5
Sensor Gp - Temperature, Rear Axle Brake Oil	131-0427	37	F-7
Switch AS - Pressure, Brake Accumulator Oil	175-3244	38	E-5
Switch AS - Pressure, Filter Bypass	339-4361	39	E-8
Switch AS - Pressure, Parking Brake Oil	174-4132	40	E-8
Tank Gp - Hydraulic	152-5689	41	A-5
Valve Gp - Accumulator Charging	238-0252	42	E-5
Valve Gp - Brake Control, Parking	106-1774	43	E-8
Valve Gp - Brake Control, Service	200-8866	44	E-8
Valve Gp - Breaker Relief Hydraulic Tank	220-0812	45	B-6
Valve Gp - Relief, Service Brake	270-3849	46	E-8
IMPLEMEN			
Actuator Gp - Pilot Control	192-6443	47	C-1
Cylinder Gp - LH	234-4600	48	D-3
Cylinder Gp - TR and Tip, LH	294-3231	49	D-2
Cylinder Gp - TR and Tip, RH	151-6171	50	D-1
Fitting - Quick Disconnect, Tap DD	8V-3965	51	A-4
Fitting - Quick Disconnect, Tap GG	8V-3965	52	D-3
Fitting - Quick Disconnect, Tap HH	8V-3965	53	D-3
Fitting - Quick Disconnect, Tap II	8V-3965	54	D-3
Fitting - Quick Disconnect, Tap JJ	8V-3965	55	D-3
Fitting - Quick Disconnect, Tap KK	8V-3965	56	D-3
Fitting - Quick Disconnect, Tap LL	8V-3965	57	D-3
Valve - Check, Manual	73-7423	58	D-3
Valve - Check, Manual	73-7423	59	D-3
Valve - Check	73-7423	59	C-1
Valve Gp - Check, Direct Signal, Lift Arm Lower	9T-3096	60	D-3
Valve Gp - Check, Pilot Operated	84-5913	61	D-3
Valve Gp - Check, Pilot Operated	84-5913	62	D-2
Valve Gp - Combination, Hydraulic Lockout	163-3889	63	C-1
Valve Gp - Control, 3 Function	334-8952	64	C-1
Valve Gp - Manual, Lowering Control	112-1817	65	C-4
Valve Gp - Press. Reducing, Lowering Control	252-8040	67	C-2
Valve Gp - Relief (Line)	8E-5950	69	D-2
Valve Gp - Relief (Line)	8E-5950	69	D-2
Valve Gp - Relief (Line)	8E-5950	70	D-2
Valve Gp - Relief (Line)	4T-1761	71	D-3
Valve Gp - Relief, Main	192-0895	72	C-1
Valve Gp - Shuttle	8E-3373	73	C-4
Valve Gp - Solenoid, 24 Volt, Hydraulic Lockout	270-8528	74	C-4
FAN / OIL COOLER			
Cooler Gp - Hydraulic Oil	143-3880	75	A-3
Fiber Gp - Oil Hyd. Fan Pump, Motor Case Drain	168-4647	76	A-4
Fitting - Quick Disconnect, Tap MM	8V-3965	77	B-2
Motor Gp - Hydraulic Fan	213-5268	78	A-3
Pump Gp - Hydraulic Fan	226-3696	79	A-3
Valve Gp - Check	9T-5134	80	A-3
Valve Gp - Check, Anti-Cavitation	9T-3752	81	A-3
Valve Gp - Control, (Press. Flow Comp. Hyd. Fan)	207-0995	82	A-2
Valve Gp - Demand Fan	191-8735	83	B-2
RAX COOLING			
Core AS - Axle Oil Cooler	173-4753	84	E-2
Fiber Gp - Oil Axle Oil Cooler	230-3631	85	E-1
Motor Gp - Axle Oil Cooler Fan	178-1602	86	E-2
Pump Gp - Axle Oil Cooler	292-9912	87	E-3
Pump Gp - Axle Oil Cooler Fan	292-3162	88	E-3
Valve - Check	9T-5134	89	E-4
Valve AS - Check (Anti-cavitation)	8T-3752	90	E-2
Valve Gp - Solenoid (Oil and Hydraulic Oil Cooler)	145-2610	91	E-3

Note: * - component not shown
Always check Component part Numbers with Parts Manual for your specific machine.



STEERING CIRCUIT





LINE PATTERNS	
	Pressure Line
	Pilot / Load Sensing Pressure
	Drain / Return Lines
	Component Group

CALLOUTS	
	Callout Number
	Machine Location (See Component Location Sheet)
	Component Name
	Part Number

HYDRAULIC CIRCUIT COLOR DESCRIPTIONS	
	IMPLEMENT PILOT CIRCUIT
	BRAKE / PILOT / STEERING PUMP OUTPUT
	STEERING CIRCUIT
	FAN PUMP AND CIRCUIT
	SUPPLY LINE
	SERVICE AND PARKING BRAKE CIRCUIT
	DRAIN / RETURN LINE
	IMPLEMENT PUMP OUTPUT
	RAISE / LOWER CIRCUIT
	TILT / TIP CIRCUIT
	RAX PUMP AND FAN CIRCUIT
	RAX COOLING
	ELECTRICAL CIRCUITS

THIS SCHEMATIC IS FOR THE 834H WHEEL TRACTOR HYDRAULIC SYSTEM
 MEDIA NUMBER: UENR1281
 SCHEMATIC PART NUMBER: 384-4770, CHANGE: 00, VERSION: - (HYDRAULICS)
 SCHEMATIC PART NUMBER: 260-0867, CHANGE: 00, VERSION: - (BRAKES)
 SCHEMATIC PART NUMBER: 259-3116, CHANGE: 03, VERSION: - (RAX)
 Components are shown installed on a fully operable machine with the key and engine off, transmission shifter in neutral and with parking brake set.
 Refer to the appropriate Service Manual for Troubleshooting, Specifications and Systems Operations.