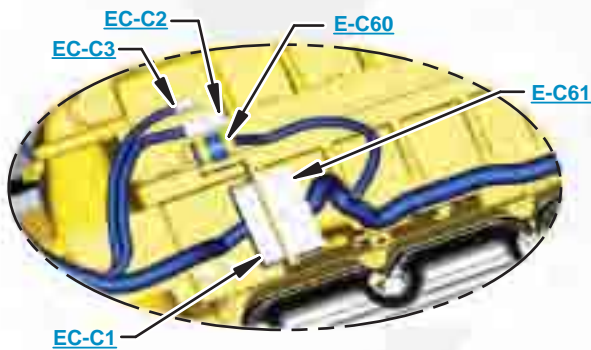


This document is best viewed at a screen resolution of 1024 X 768.

To set your screen resolution do the following:
RIGHT CLICK on the **DESKTOP**.
 Select **PROPERTIES**.
CLICK the **SETTINGS TAB**.
MOVE THE SLIDER under **SCREEN RESOLUTION** until it shows **1024 X 768**.
CLICK OK to apply the resolution.

The Bookmarks panel will allow you to quickly navigate to points of interest.



Click on any text that is BLUE and underlined. These are hyperlinks that can be used to navigate the schematic and machine views.

VIEW ALL CALLOUTS

When only one callout is showing on a machine view this button will make all of the callouts visible. This button is located in the top right corner of every machine view page.

HOTKEYS (Keyboard Shortcuts)		
	FUNCTION	KEYS
	Zoom In	"CTRL" / "+"
	Zoom Out	"CTRL" / "-"
	Fit to Page	"CTRL" / "0" (zero)
	Hand Tool	"SPACEBAR" (hold down)
	Find	"CTRL" / "F"



Schematic

834K Wheel Dozer Hydraulic System

LWY1-UP
TWY1-UP

COMPONENT LOCATION

Page 1 of 2



Description	Part Number	Machine Location	Schematic Location
Accumulator Gp -Brake (Charged) (Front)	Crn / Nacd Approved 111-9040	1	C-4
	Ce Approved 220-1432		
	Ce/crn / Nacd Approved 350-5576		
Accumulator Gp -Brake (Charged) (Rear)	Crn / Nacd Approved 111-9040	2	C-4
	Ce Approved 220-1432		
	Ce/crn / Nacd Approved 350-5576		
Accumulator Gp -Pilot Oil (Charged) (Steering)	245-2975	3	C-3
Brake Gp -Parking	380-3895	4	F-1
Breather -Steering Tank	157-7911	5	A-4
Control Gp -Foot Brake	305-5531	6	F-2
Core As -Oil Cooler (Air To Oil)	372-9124	7	B-2
Core As -Oil Cooler (Brake Oil, Hyd Fan Oil) (Pump 2)	340-9352	8	E-4
Core As -Oil Cooler (Brake Oil, Hyd Fan Oil) (Pump 3)	340-9352	9	E-1
Cylinder Gp -Lift	383-9075	10	E-7
Cylinder Gp -Steering (LH)	175-5521	11	F-5
Cylinder Gp -Steering (RH)	175-5521	12	F-5
Cylinder Gp -Tilt (LH)	372-9999	13	E-6
Cylinder Gp -Tilt (RH)	372-9999	14	E-6
Filter Gp -Oil	295-6259	15	B-5
Filter Gp -Oil (Axle Oil Cooler) (Pump 2)	230-3633	16	E-3
Filter Gp -Oil (Axle Oil Cooler) (Pump 3)	230-3633	17	E-2
Filter Gp -Oil (Cooler Return)	115-2129	18	B-2
Filter Gp -Oil (Drain) (Fan)	376-6640	19	B-4
Filter Gp -Oil (Drain) (Tandem Pump)	376-6640	20	B-5
Manifold Gp -Control (Axle Oil Cooler On/Off)	112-2240	21	D-4
Motor Gp -Piston (Hydraulic Fan)	214-1099	22	B-1
Plug -Orifice (Steering Cyl 1)	6T-0421	23	E-5
Plug -Orifice (Steering Cyl 2)	6T-0421	24	D-5
Pump & Motor Gp -Axle Oil Cooler	264-6727	25	D-3
Pump Gp -Brake	333-3788	26	A-4
Pump Gp -Double Piston (Tandem)	369-3941	27	B-6
Pump Gp -Gear (Axle Cooling)	333-3781	28	C-2
Pump Gp -Gear (Secondary Steering)	150-7585	29	B-7
Pump Gp -Piston (Fan Control)	333-3805	30	A-6
Pump Gp -Piston (Steering/Implement) (LH)	365-2142	31	A-8
Pump Gp -Piston (Steering/Implement) (RH)	365-2143	32	A-7

COMPONENT LOCATION

Page 2 of 3



Description	Part Number	Machine Location	Schematic Location
Screen As (Hydraulic Tank) (Cooler Return)	9T-9227	33	A-5
Screen As (Hydraulic Tank) (Steering/Implement Pump)	9T-9227	34	A-5
Sensor -Temperature (Hydraulic Tank)	256-6453	35	A-5
Sensor Gp -Pressure (Brake Oil)	344-7390	36	F-1
Sensor Gp -Pressure (Implement/Steering Combined)	349-1178	37	D-7
Sensor Gp -Pressure (Low Stored Energy)	344-7391	38	C-5
Sensor Gp -Pressure (Parking Brake Oil)	344-7391	39	E-1
Sensor Gp -Pressure (Steering Pressure Reduction)	344-7389	40	D-8
Sensor Gp -Temperature (Axle Oil)	288-8390	41	D-4
	288-8390		D-2
	288-8390		F-2
	288-8390		F-2
Solenoid As -Engine Cooling Fan Solenoid)	269-4669	42	B-6
Valve Gp -Unloading (Secondary Steering)	117-5099	91	C-8
Tank Hp -Hydraulic	338-8601	43	A-4
Valve -Bypass (Axle Oil Cooler) (Pump 2)	260-3789	44	F-4
Valve -Bypass (Axle Oil Cooler) (Pump 3)	260-3789	45	E-2
Valve -Check (Drain Line)	100-8010	46	E-4
Valve -Check (LH Tilt Cyl)	100-8010	47	E-6
Valve -Check (Lift Cyl) (1)	100-8010	48	E-7
Valve -Check (Lift Cyl) (2)	100-8010	49	E-7
Valve -Check (RH Tilt Cyl)	100-8010	50	E-6
Valve -Check (Steering Cyl)	100-8010	51	E-5
Valve -Check (Steering Pumps)	111-1460	52	C-7
Valve As -Check (Interlock) (Extend Lift Cyl)	123-4750	53	E-8
Valve As -Check (Interlock) (Retract Lift Cyl)	123-4750	54	E-8
Valve Gp -4 Section Steering / Implement Flow Share Scoop	364-9542	55	E-8
	437-8990		
Valve Gp -Brake Control	388-6321	56	F-1
Valve Gp -Charge	421-9037	57	C-4
Valve Gp -Charge (CE Certified)	421-9038	58	C-5
Valve Gp -Check & Relief (Retract LH Steering Cyl)	4Z-5900	59	E-5
Valve Gp -Check & Relief (Retract RH Steering Cyl)	4Z-5900	60	E-5
Valve Gp -Check (Oil Cooler Bypass)	353-2313	61	B-2
Valve Gp -Check (Pilot) (Secondary Steering Supply)	185-4026	62	B-5
Valve Gp -Check (Pilot) (Steering Supply)	185-4026	63	B-5

COMPONENT LOCATION

Page 3 of 3



Description	Part Number	Machine Location	Schematic Location
Valve Gp -Check (Secondary Steering)	380-5693	64	D-7
Valve Gp -Check (Steering)	149-4617	65	D-6
Valve Gp -Combination (Pilot)	373-9286	66	D-8
Valve Gp -Manual (Lowering Control)	112-1817	67	C-8
Valve Gp -Parking Brake Control	349-4389	68	E-1
Valve Gp -Pilot (Stick Steering)	249-5615	69	C-5
Valve Gp -Pressure Limiter	376-1241	70	D-4
Valve Gp -Pressure Reducing (Manual Lower)	374-9491	71	D-8
Valve Gp -Pressure Reducing (Steering Pilot Supply)	369-8183	72	C-4
Valve Gp -Relief (Direct Operated)	179-3741	73	E-4
Valve Gp -Selector & Press Cont (Secondary Steering)	6E-5566	74	D-7
Valve Gp -Selector & Press Cont (Steering)	6E-5566	75	B-5
Valve Gp -Sequence (To Fan Motor)	369-8170	76	B-3
Valve Gp -Shuttle (Combination)	248-3291	77	D-8
Valve Gp -Shuttle (LH Tilt Cyl)	260-8590	78	D-6
Valve Gp -Shuttle (RH Tilt Cyl)	260-8590	79	D-6
Valve Gp -Shuttle (Steering Cyl)	260-8590	80	D-5
Valve Gp -Solenoid (Axle Oil Cooler On/Off)	149-2610	81	D-3
Valve Gp -Solenoid (Implement On/Off)	333-8242	82	D-8
Valve Gp -Solenoid (LH Tilt Cyl 1)	313-7668	83	E-6
Valve Gp -Solenoid (LH Tilt Cyl 2)	313-7668	84	D-7
Valve Gp -Solenoid (Lift Cyl 1)	313-7668	85	E-7
Valve Gp -Solenoid (Lift Cyl 2)	313-7668	86	D-7
Valve Gp -Solenoid (RH Tilt Cyl 1)	313-7668	87	E-6
Valve Gp -Solenoid (RH Tilt Cyl 2)	313-7668	88	D-6
Valve Gp -Steering Neutralizer (Stick Steering) (LH)	296-5662	89	B-6
Valve Gp -Steering Neutralizer (Stick Steering) (RH)	296-5662	90	C-6

TAP LOCATION

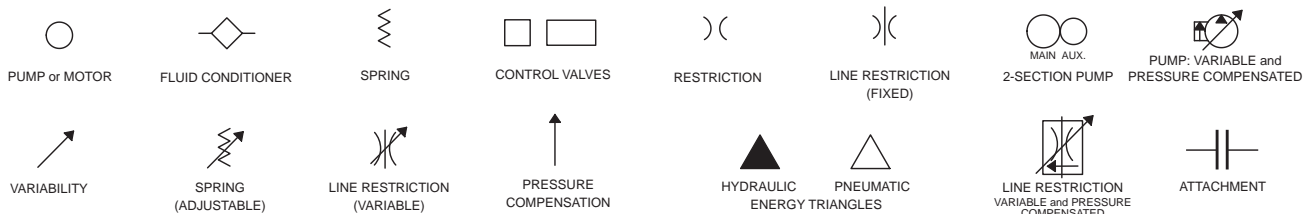


Tap Number	Description	Schematic Location
<u>AA</u>	Steering / Implement Pump Pressure (LH)	<u>B-8</u>
<u>BB</u>	Steering / Implement Pump Pressure (RH)	<u>C-7</u>
<u>CC</u>	Steering / Implement Load Sense Pressure	<u>B-8</u>
<u>DD</u>	Pilot Supply Pressure	<u>C-3</u>
<u>EE</u>	Brake Accumulator Rear Pressure	<u>C-4</u>
<u>FF</u>	Brake Accumulator Front Pressure	<u>C-4</u>
<u>GG</u>	Lift Pressure (Rod End)	<u>E-7</u>
<u>HH</u>	Lift Pressure (Head End)	<u>E-7</u>
<u>II</u>	Fan Pump Pressure	<u>B-3</u>
<u>JJ</u>	Front Brake Pressure	<u>F-3</u>
<u>KK</u>	Rear Brake Pressure	<u>F-2</u>
<u>SOS</u>	Oil Sampling Port	<u>B-4</u>

FLUID POWER SYMBOLS



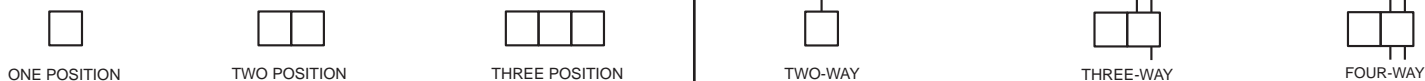
BASIC COMPONENT SYMBOLS



VALVE ENVELOPES

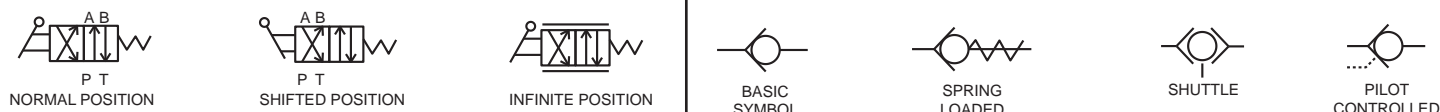
VALVES

VALVE PORTS



CONTROL VALVES

CHECK VALVES

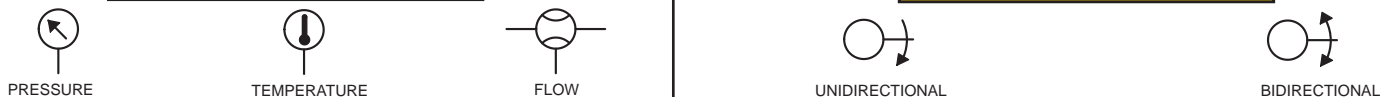


FLUID STORAGE RESERVOIRS



MEASUREMENT

ROTATING SHAFTS



COMBINATION CONTROLS



MANUAL CONTROL SYMBOLS



RELEASED PRESSURE

PILOT CONTROL SYMBOLS

REMOTE SUPPLY PRESSURE



ACCUMULATORS

CROSSING AND JOINING LINES

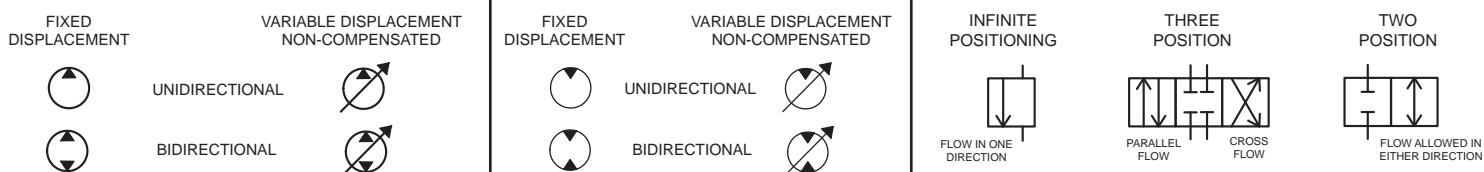
HYDRAULIC AND PNEUMATIC CYLINDERS



HYDRAULIC PUMPS

HYDRAULIC MOTORS

INTERNAL PASSAGEWAYS



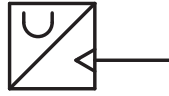
ELECTRICAL SYMBOLS



Hydraulic Symbols (Electrical)



Transducer
(Fluid)



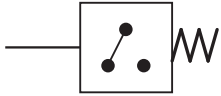
Transducer
(Gas / Air)



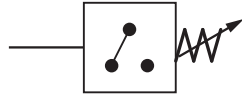
Generator



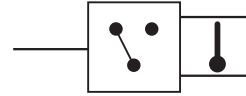
Electric Motor



Pressure Switch



Pressure Switch
(Adjustable)

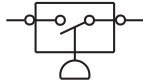


Temperature Switch

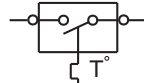


Electrical Wire

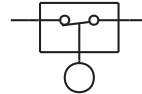
Electrical Symbols (Electrical)



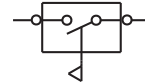
Pressure
Symbol



Temperature
Symbol



Level
Symbol

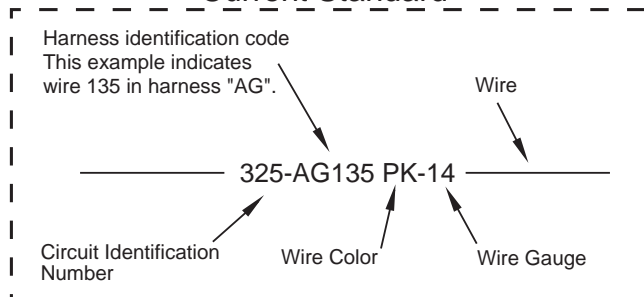


Flow
Symbol

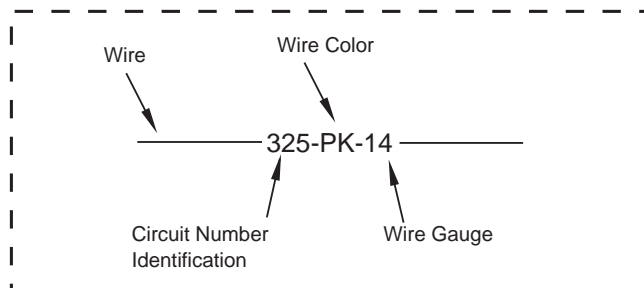
Wire Number Identification Codes

Electrical Schematic Example

Current Standard

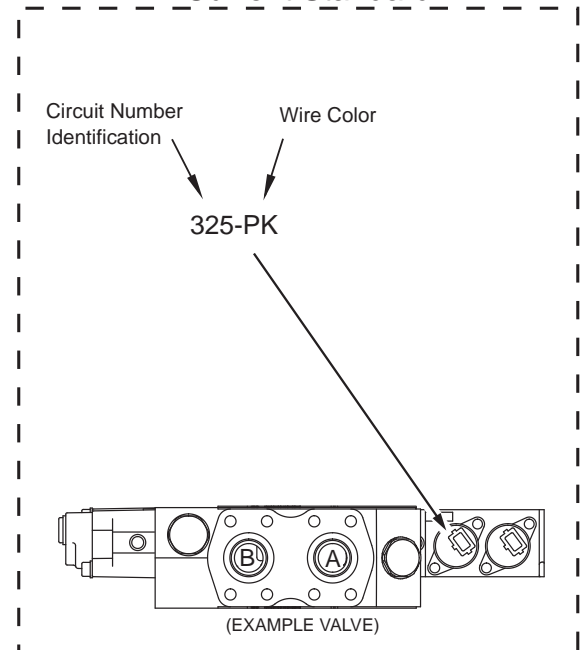


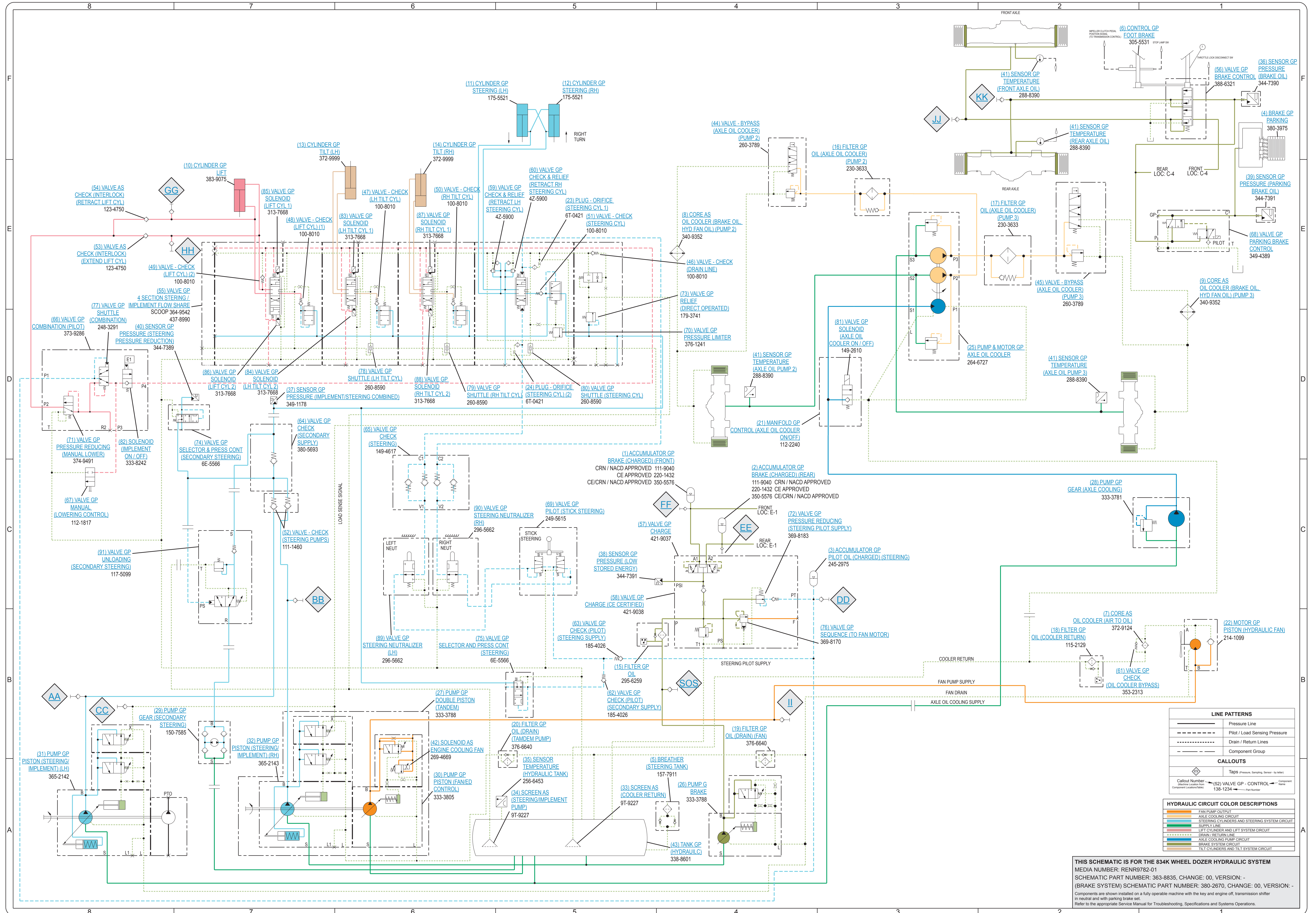
Previous Standard



Hydraulic Schematic Example

Current Standard





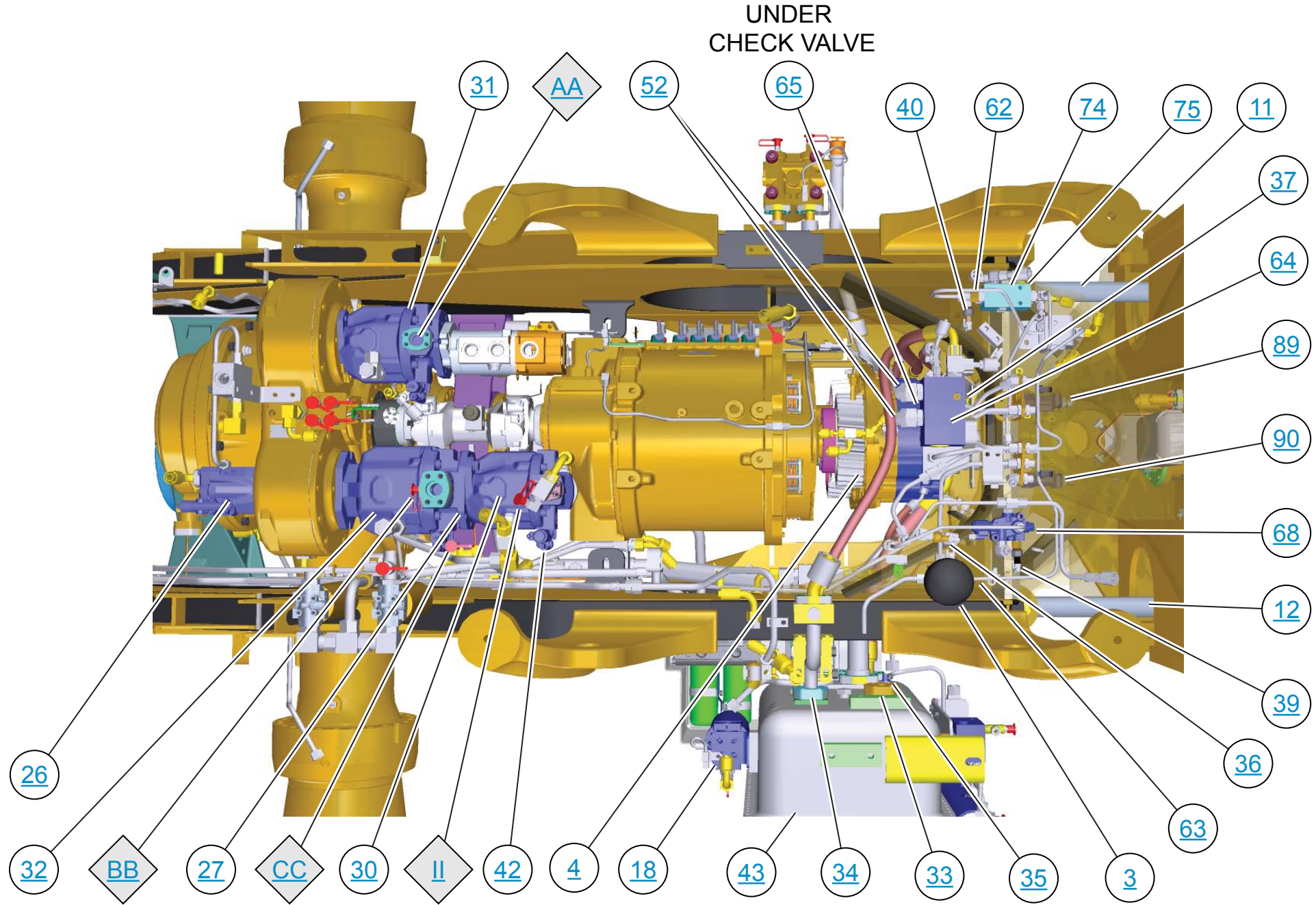
LINE PATTERNS	
	Pressure Line
	Pilot / Load Sensing Pressure
	Drain / Return Lines
	Component Group

CALLOUTS	
	Taps (Pressure, Sampling, Sensor - by letter)
	Callout Number (Machine Location Item Component Location/Name)

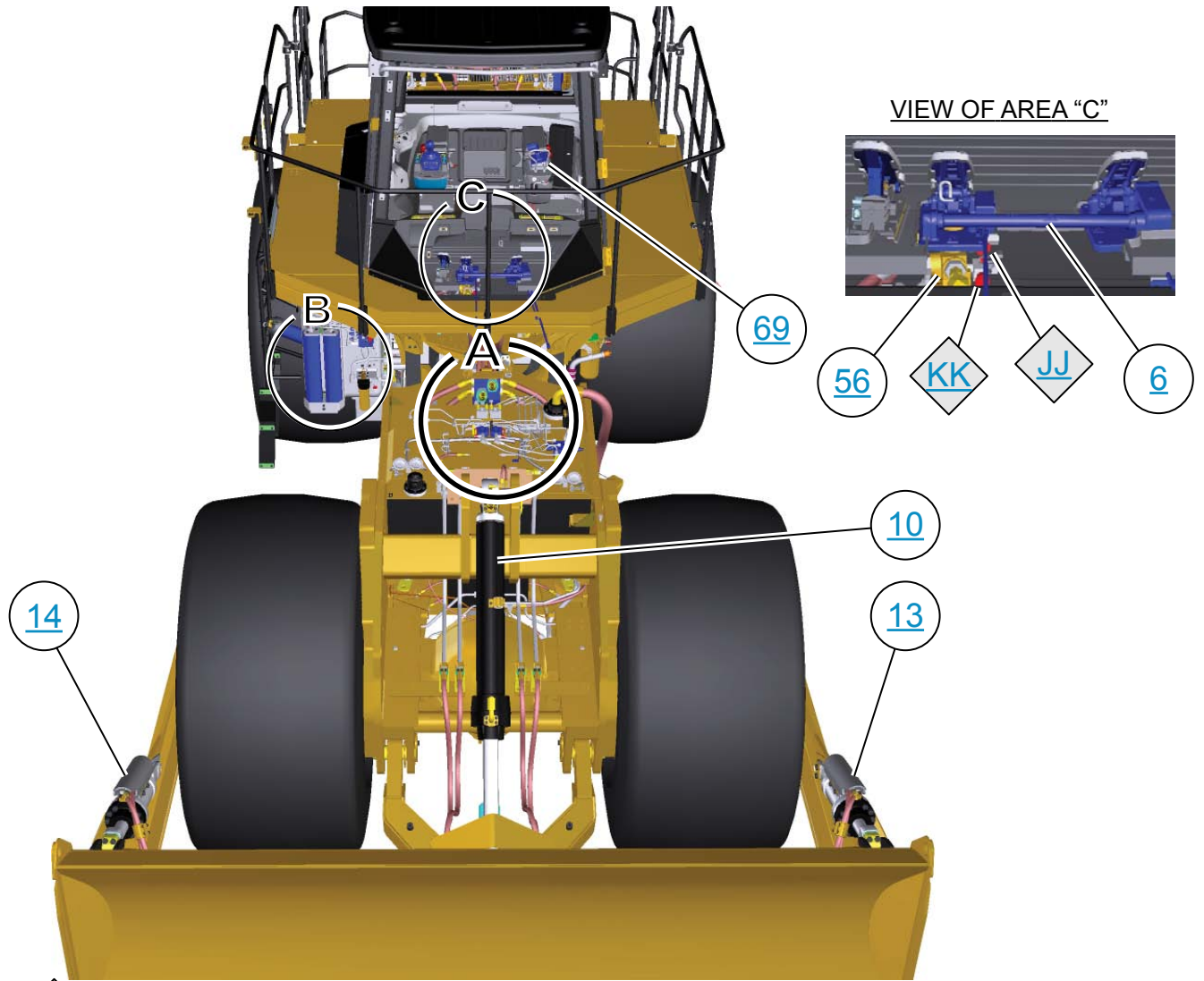
HYDRAULIC CIRCUIT COLOR DESCRIPTIONS	
	FAN PUMP OUTPUT
	AXLE COOLING CIRCUIT
	STEERING CYLINDERS AND STEERING SYSTEM CIRCUIT
	SUPPLY LINE
	LIFT CYLINDER AND LIFT SYSTEM CIRCUIT
	DRAIN / RETURN LINE
	AXLE COOLING PUMP CIRCUIT
	BRAKE SYSTEM CIRCUIT
	TILT CYLINDERS AND TILT SYSTEM CIRCUIT

THIS SCHEMATIC IS FOR THE 834K WHEEL DOZER HYDRAULIC SYSTEM
 MEDIA NUMBER: REN9782-01
 SCHEMATIC PART NUMBER: 363-8835, CHANGE: 00, VERSION: -
 (BRAKE SYSTEM) SCHEMATIC PART NUMBER: 380-2670, CHANGE: 00, VERSION: -
 Components are shown installed on a fully operable machine with the key and engine off, transmission shifter in neutral and with parking brake set.
 Refer to the appropriate Service Manual for Troubleshooting, Specifications and Systems Operations.

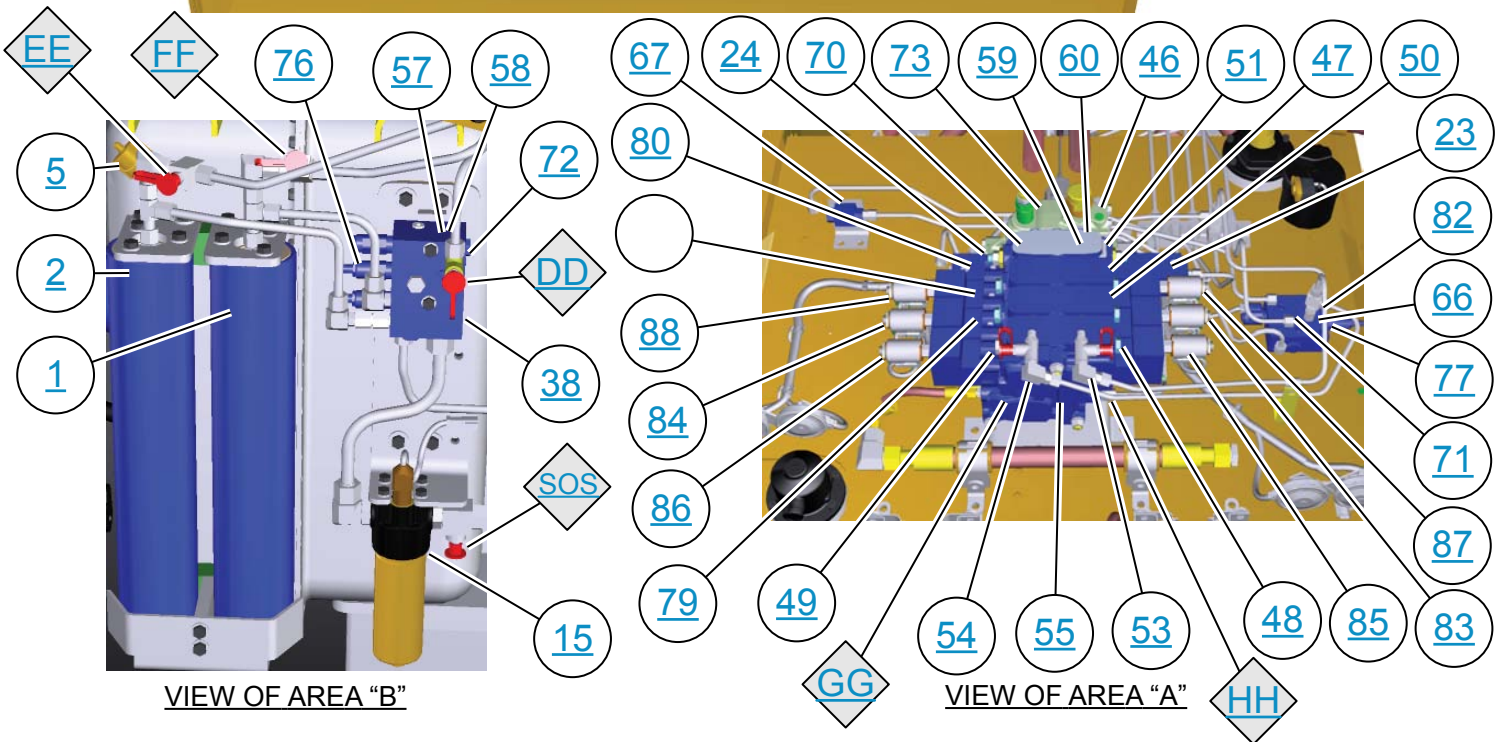
MACHINE - TOP VIEW



MACHINE - FRONT VIEW



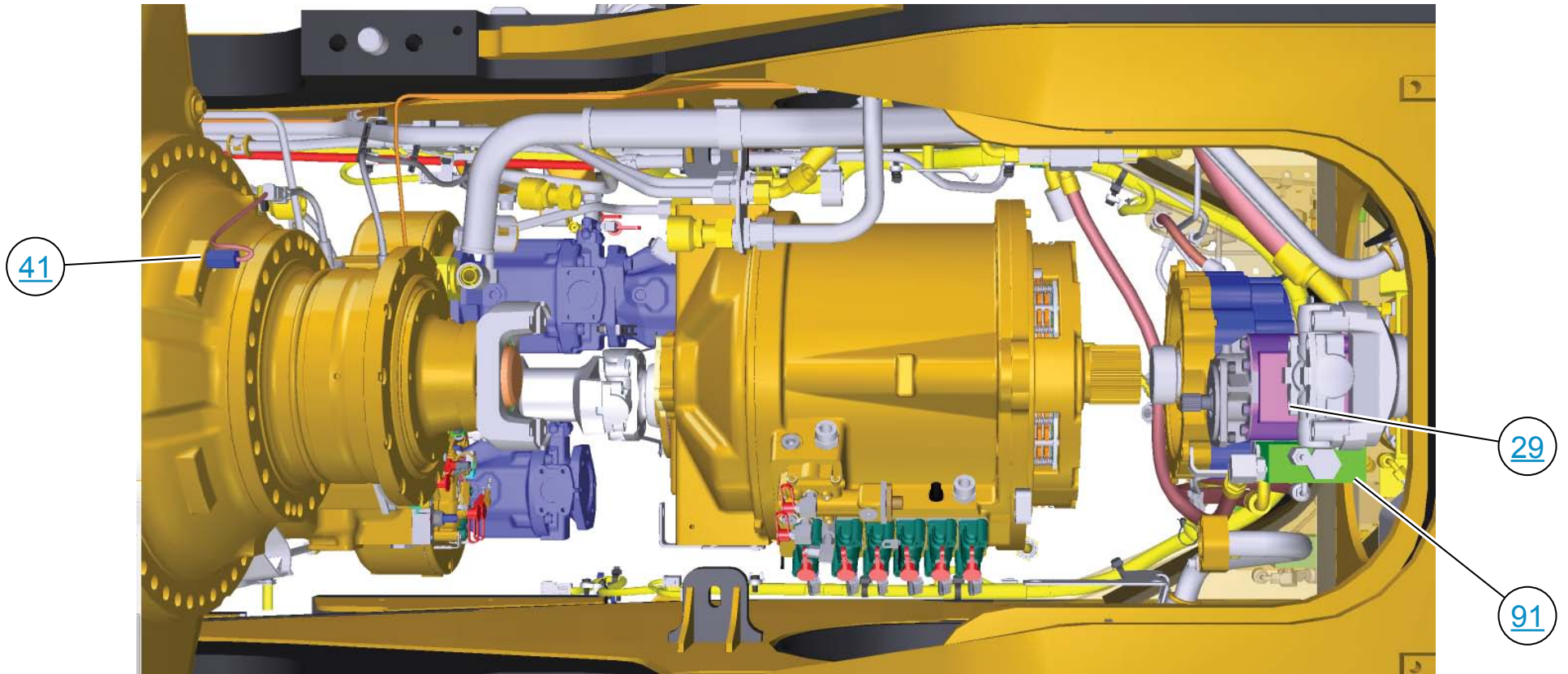
VIEW OF AREA "C"



VIEW OF AREA "B"

VIEW OF AREA "A"

MACHINE - BOTTOM VIEW



COOLING - RIGHT VIEW



ON REAR
OF MACHINE

