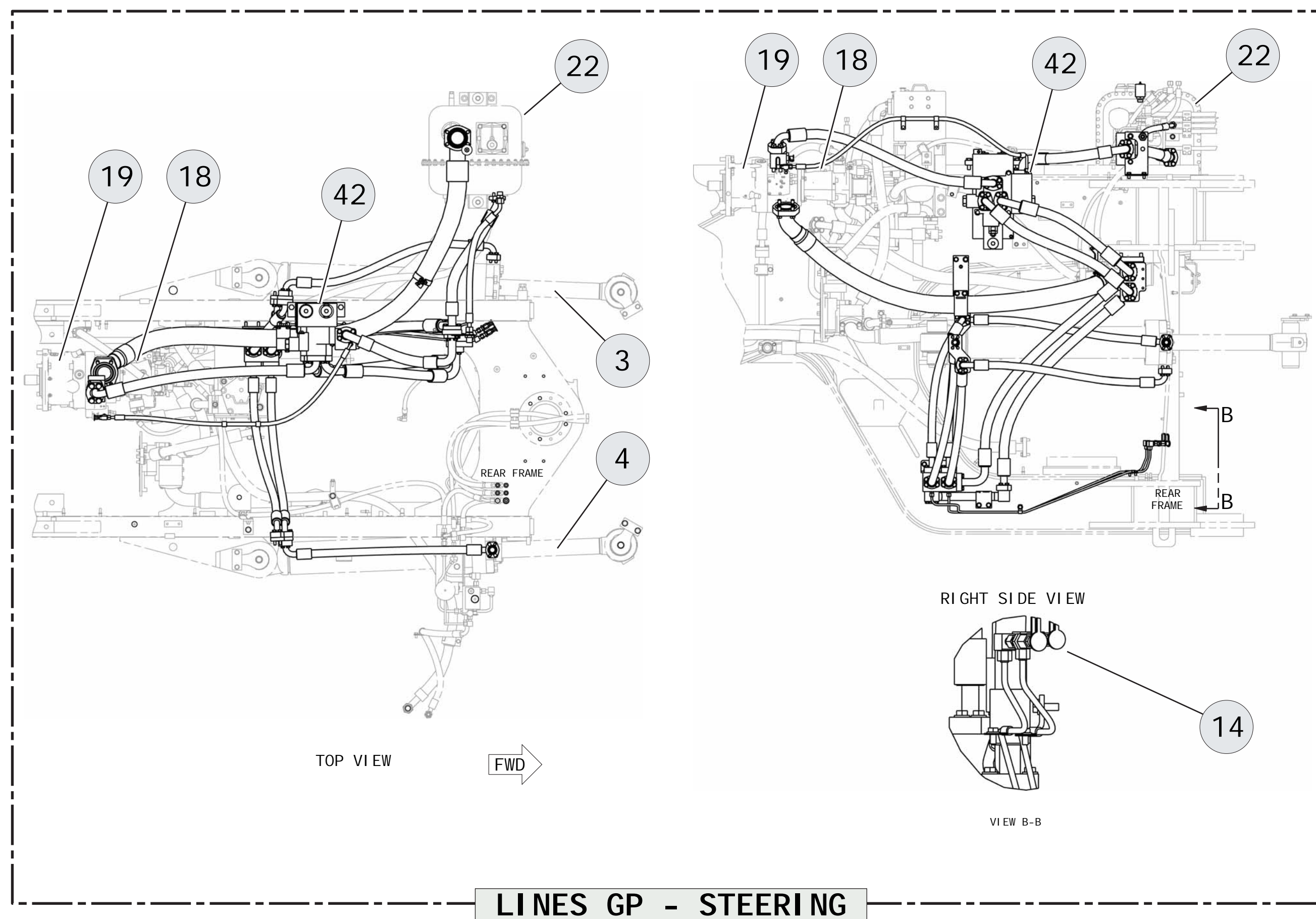
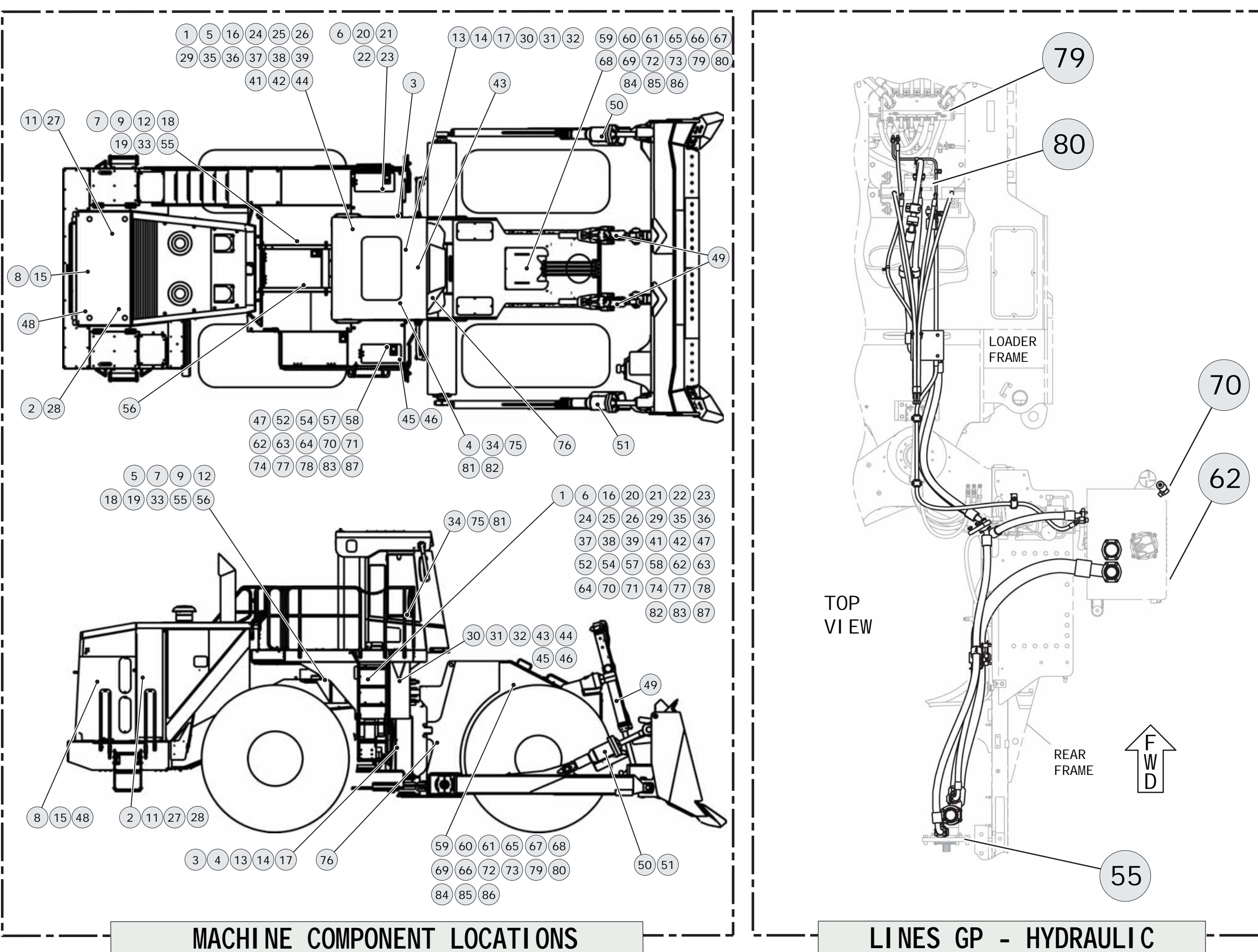


Component Locations			
Description	Part Number	Machine Location	Schematic Location
<b>Steering / Fan Drive Schematic</b>			
Ball (Makeup Valve)	48-9782	1	E-14
Core As - Hydraulic Oil Cooler (Hydraulic Fan, Steering)	191-4600	2	C-11
Cyl. Indr. Gp - Steering (LH)	6E-1244	3	G-14
Cyl. Indr. Gp - Steering (RH)	9T-9568	4	G-14
Elbow	127-9015	5	C-10
Filter Element As - Oil (Hydraulic)	47-3134	6	B-11
Filter Gp - Oil (Hydraulic Fan Pump Case Drain)	166-4647	7	B-11
Filter Gp - Oil (Hydraulic Fan Motor Case Drain)	166-4647	8	C-11
Filter Gp - Oil (Steering Pump Case Drain)	166-4647	9	B-12
Fitting As (Quick Disconnect) (Pressure Tap)	6V-3965	10	B-13
		11	C-11
		12	C-12
		13	D-12
		14	F-14
Motor Gp - Piston (Hydraulic Fan)	229-0100	15	D-11
Plug - Orifice (Cushion)	47-4207	16	E-14
Pump Gp - Gear (Secondary Steering)	101-4007	17	D-12
Pump Gp - Piston (Hydraulic Fan, High Ambient Temperature)	235-0843	18	C-11
Pump Gp - Piston (Hydraulic Fan, Standard Ambient Temperature)	229-0099	19	C-12
Pump Gp - Piston (Steering)	229-8604	20	C-12
Screen As (Hydraulic Tank)	9T-9227	20	B-11
Screen Gp (Hydraulic Tank)	7J-2656	21	B-11
Tank & Filter Gp - Hydraulic (Steering, Hydraulic Fan)	6E-4683	22	B-12
Valve (Filter Bypass)	9J-1988	23	B-11
Valve (Priority Steering Pump Check)	6E-3780	24	E-12
Valve (Secondary Steering Pump Check)	7J-7423	25	F-12
Valve - Diverter (Secondary Steering)	2U-7345	26	F-12
Valve - Fluid Sampling (Steering, Hydraulic Fan Oil)	8C-3446	27	C-11
Valve Gp - Check (Steering) (Pilot Cushion Override) (Steering Quad)	6E-1454	28	C-11
	104-7108	29	C-13
	176-9594	30	D-14
	176-9371	31	D-14
	111-7775	32	D-15
Valve Gp - Demand Fan	191-8735	33	D-9
Valve Gp - Pilot (Steering)	249-5615	34	B-15
Valve Gp - Pressure Reducing	6E-4286	35	D-13
Valve Gp - Relief (Pump Backup) (Secondary Steering) (Steering Cylinder Crossover)	100-4335	36	E-13
	6E-3986	37	E-12
	6E-3985	38	F-15
Valve Gp - Selector & Pressure Control (Primary & Secondary Steering Pilot Source Selector) (Secondary Steering Warning)	6E-5566	39	C-13
	47-1860	41	F-14
Valve Gp - Shuttle (Ball Resolver)	47-1860	41	F-14
Valve Gp - Steering (8th Secondary Steering)	6E-2923	42	F-13
Valve Gp - Steering Neutralizer	9T-7426	43	C-14
		44	C-15
<b>Implements / Brake Supply Schematic</b>			
Accumulator Gp - Brake (Charged)	219-2949	45	B-8
Accumulator Gp - Pilot Oil (Charged)	226-0420	47	D-8
Core As - Oil Cooler	275-7895	48	B-5
Cylinder Gp - Lift	42-6424	49	C-2, D-2
Cylinder Gp - Tilt & Tip (LH)	6E-4835	50	E-1
Cylinder Gp - Tilt & Tip (RH)	6E-4836	51	E-1
Filter Element As - Oil (Hydraulic)	47-3134	52	B-5
Fitting As (Quick Disconnect) (Pressure Tap)	6V-3965	53	C-4
		54	D-8
Pump Gp - Gear (Pilot, Brake)	230-0914	55	B-7
Pump Gp - Vane (Implement)	157-0956	56	B-4
Screen As (Hydraulic Tank)	9T-9227	57	B-5
Screen Gp (Hydraulic Tank)	118-8092	58	B-5
Stem (Shuttle Valve) (LH)	241-8833	59	E-5
Stem (Shuttle Valve) (RH)	8J-7430	60	D-6
Stem (Tilt) (LH)	10-0368	61	F-6
Tank & Filter Gp - Hydraulic (Implement, Brake)	237-4228	62	B-6
Tube As	9J-1985	63	B-5
Valve (Cooler Bypass)	6E-4451	64	B-5
Valve (Lift Unloading Load Check)	3G-1201	65	E-6
Valve (Load Check)	9T-3746	66	E-6
	9T-3747	67	F-6
	6E-4243	68	E-5
Valve (Makeup)	6E-4243	68	E-5
Valve (Tilt Unloading Load Check)	9J-4794	69	E-6
Valve - Breaker Relief	220-0812	70	B-5
Valve - Fluid Sampling	8C-3446	71	C-8
Valve - Relief Poppet (Circuit Relief)	6J-2561	72	E-6
	6E-4243	73	F-6
Valve - Shuttle	6E-0442	74	C-7
Valve & Mtg Gp - Solenoid (Pilot On/Off)	152-2698	75	H-7
Valve Gp - Check (Pilot Accumulator)	112-1817	76	C-3
Valve Gp - Check (Pilot Accumulator)	158-9956	77	D-7
Valve Gp - Combination (Brake Charging)	9T-9551	78	C-7
Valve Gp - Dual Tilt Control	225-2321	79	F-3
Valve Gp - Main Control (Dozer)	229-8722	80	E-7
Valve Gp - Pilot (Joystick, 3-Function)	229-8724	81	H-6
Valve Gp - Relief (Brake System Backup)	234-0351	82	B-7
Valve Gp - Relief (Pilot)	6E-6293	83	C-7
Valve Gp - Shuttle (Ball Resolver)	249-7805	84	C-2
Valve Gp - Solenoid (Tilt, Tip Function) (Dual Tilt)	47-4873	85	D-6
Valve Gp - Solenoid (Tilt, Tip Function) (Dual Tilt)	3E-9205	86	F-3
Valve Gp - Unloading	117-7761	87	C-7

Tap Locations Pressure, Sampling, and Sensor		
Tap Number	Description	Schematic Location
AA	Steer Pilot Supply Pressure Tap	B-13
BB	Steer Pump Cutoff	E-12
CC	Fan Pump Cutoff	C-11
DD	Fan Pump Discharge Pressure Tap	C-10
EE	Fan Pump Signal Pressure Tap	C-10
FF	Implement Relief - Lift Pressure Tap	C-4
GC	Implement Relief - Tilt Pressure Tap	C-4



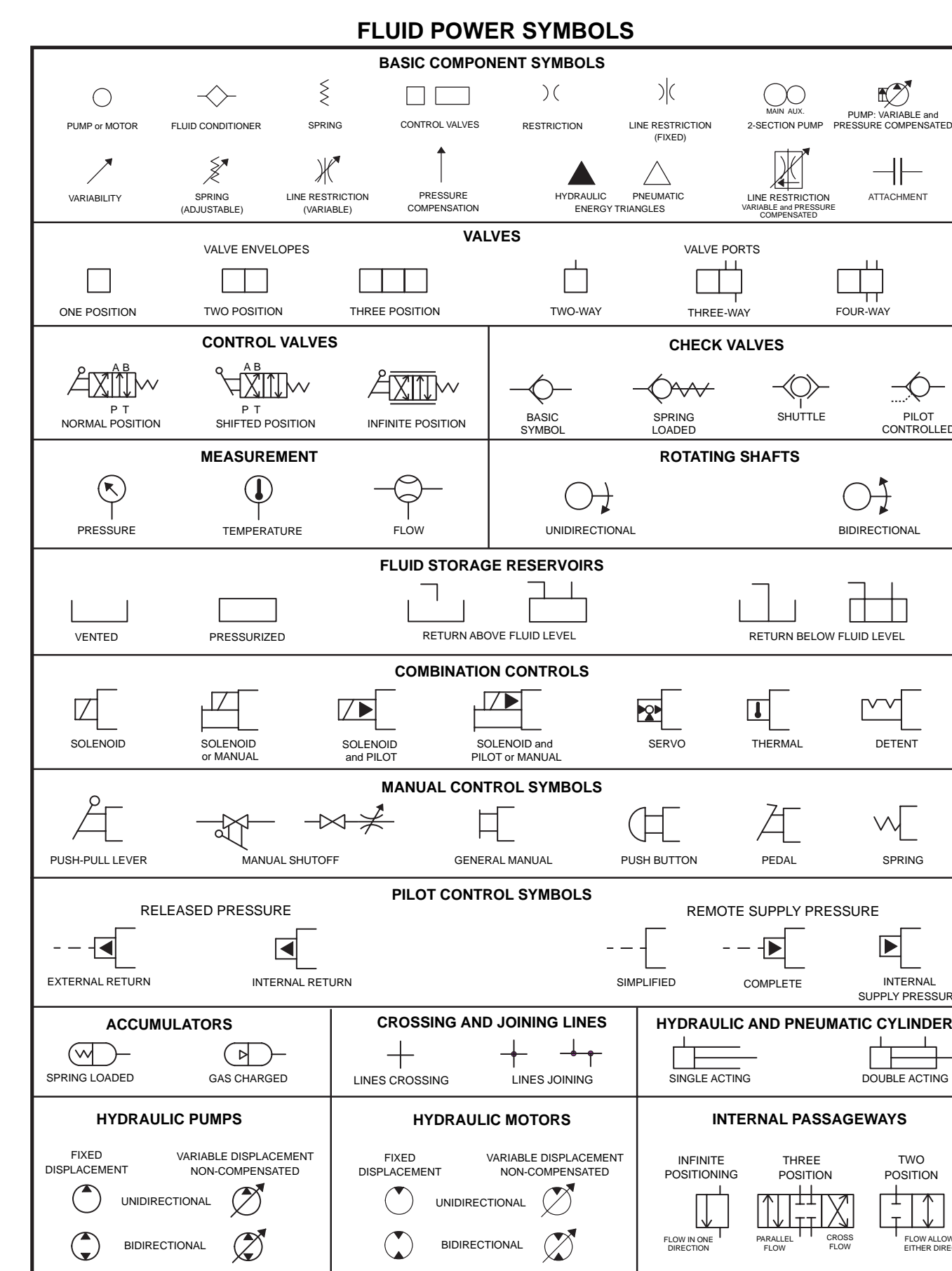
CATERPILLAR®

REN8838  
March 2006

# Schematic

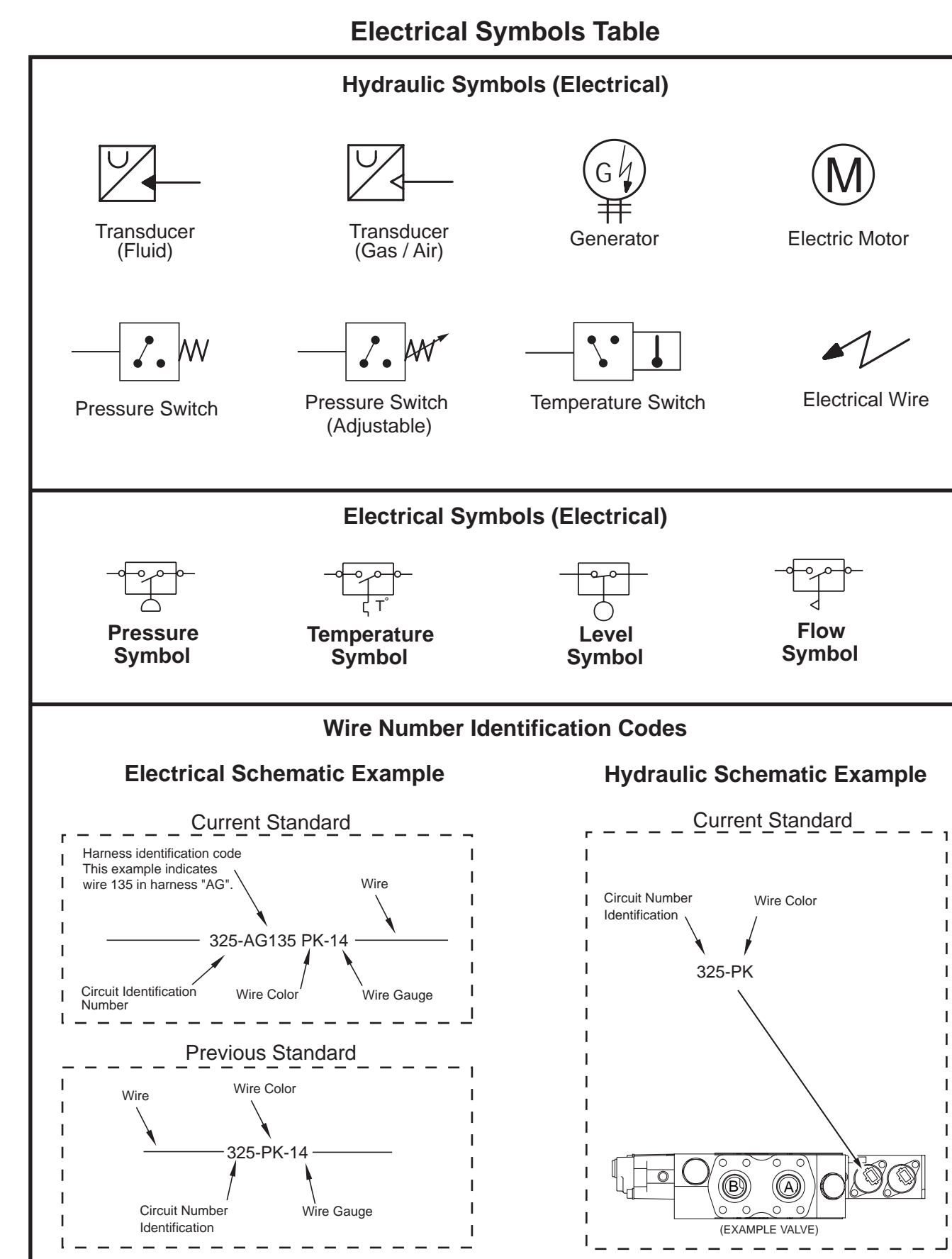
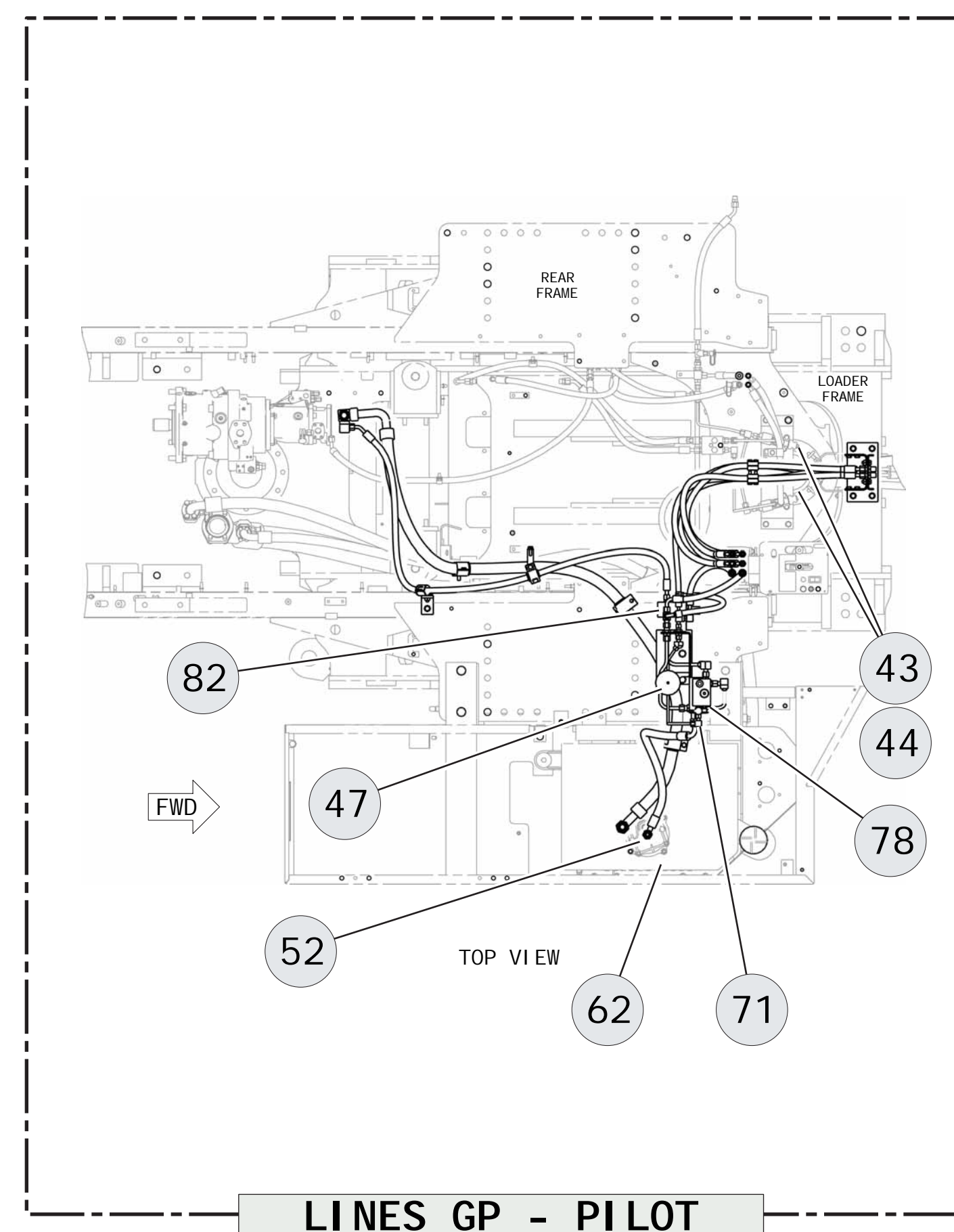
844H Wheel Dozer  
Hydraulic System

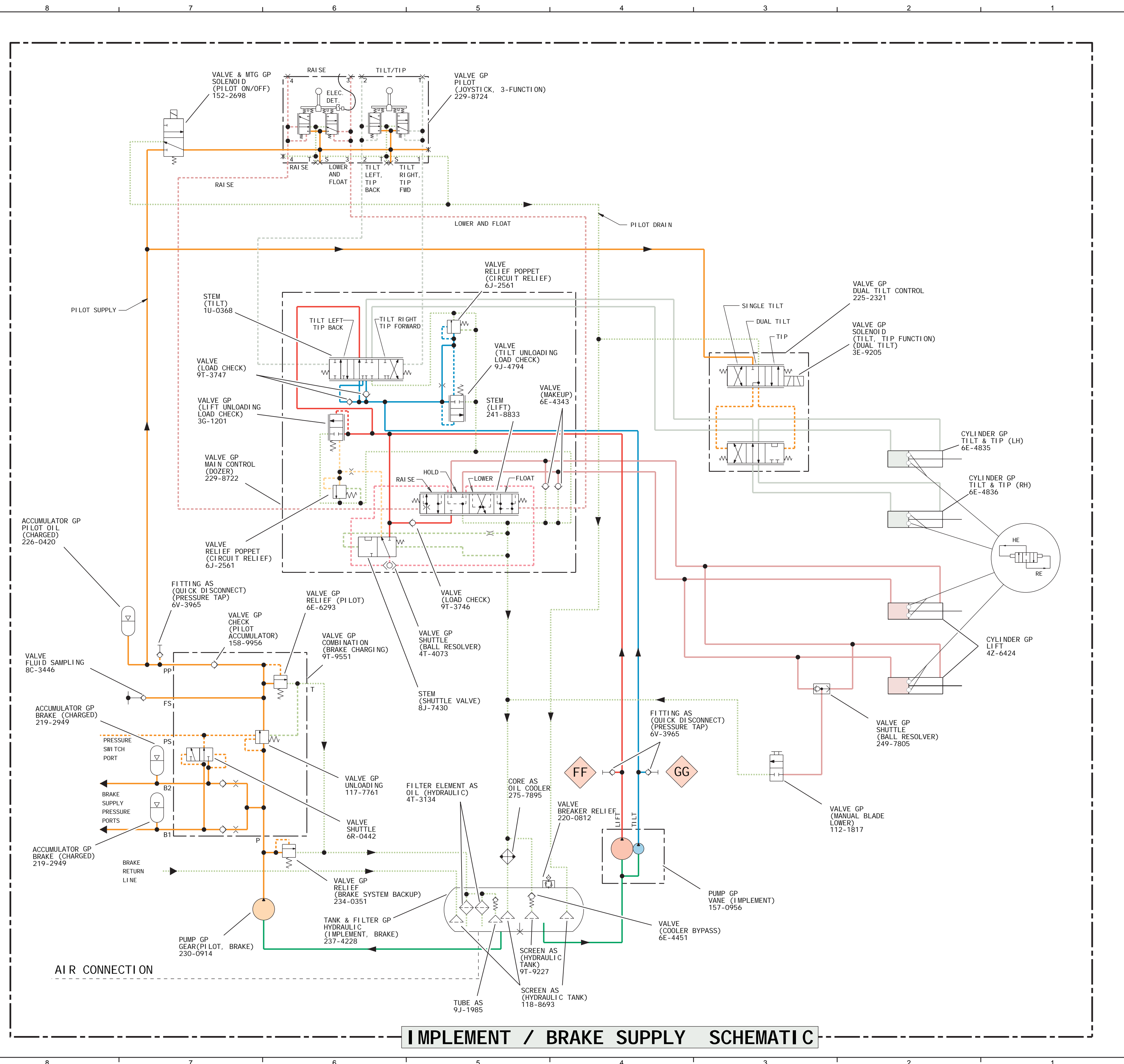
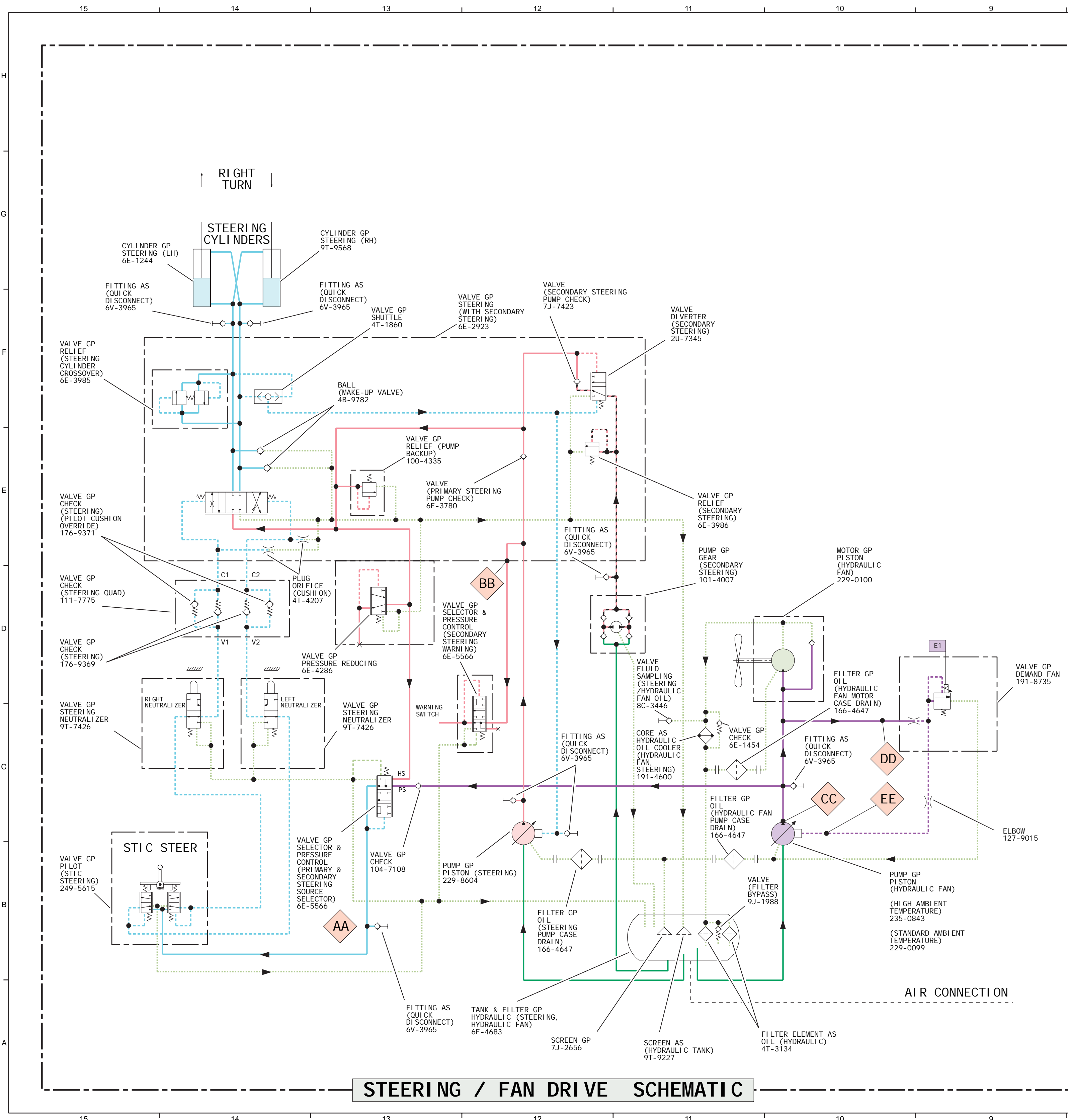
BTW1-UP



©2006 Caterpillar  
All Rights Reserved

Printed in U.S.A.





Tap Number	Description	Schematic Location
AA	Steer Pilot Supply Pressure Tap	B-8
BB	Steer Pump Cutoff	B-10
CC	Fan Pump Cutoff	D-7
DD	Fan Pump Discharge Pressure Tap	C-5
EE	Fan Pump Signal Pressure Tap	D-13
FF	Implement Relief - Lift Pressure Tap	L-2
GG	Implement Relief - Tilt Pressure Tap	G-2

HYDRAULIC CIRCUIT COLOR DESCRIPTIONS	
[Red Line]	LEFT PUMP OUTPUT
[Orange Line]	BRAKE/PILOT PUMP OUTPUT
[Green Line]	SCAVENGE PUMP
[Blue Line]	TILT PUMP OUTPUT
[Purple Line]	PRIMARY STEERING PUMP CIRCUIT
[Yellow Line]	FAN PUMP OUTPUT
[Light Blue Line]	SUPPLY LINE
[Light Green Line]	DRAIN / RETURN LINE
[Light Purple Line]	STEERING CIRCUIT
[Light Orange Line]	LOAD SENSING CIRCUIT
[Light Yellow Line]	TILT CYLINDER CIRCUIT
[Light Green Line]	LIFT CYLINDER CIRCUIT
[Light Blue Line]	SECONDARY STEERING CIRCUIT

LINE PATTERNS	
[Solid Line]	Pressure Line
[Dashed Line]	Pilot / Load Sensing Pressure
[Dotted Line]	Drain / Return Lines
[Dash-dot Line]	Component Group
[Long-dash Line]	Attachment
[Short-dash Line]	Air Line
[Circle with 'S']	Callouts
[Circle with 'T']	Taps (Pressure, Sampling, Sensor) by letter
[Circle with 'C']	Components by number

THIS SCHEMATIC IS FOR THE 844H WHEEL DOZER  
PART #: 229-8718 CHG(05)  
Components are shown installed on a fully operable machine with the key and engine off and transmission in neutral.  
Refer to the appropriate Service Manual for Troubleshooting, Specifications and Systems Operations