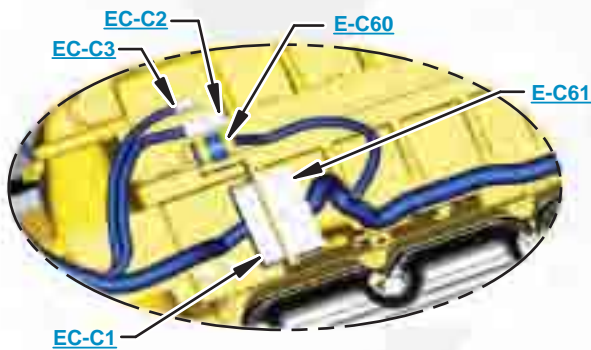


This document is best viewed at a screen resolution of 1024 X 768.

To set your screen resolution do the following:
RIGHT CLICK on the **DESKTOP**.
 Select **PROPERTIES**.
CLICK the **SETTINGS TAB**.
MOVE THE SLIDER under **SCREEN RESOLUTION** until it shows **1024 X 768**.
CLICK OK to apply the resolution.

The Bookmarks panel will allow you to quickly navigate to points of interest.



Click on any text that is BLUE and underlined. These are hyperlinks that can be used to navigate the schematic and machine views.

VIEW ALL CALLOUTS

When only one callout is showing on a machine view this button will make all of the callouts visible. This button is located in the top right corner of every machine view page.

HOTKEYS (Keyboard Shortcuts)		
	FUNCTION	KEYS
	Zoom In	"CTRL" / "+"
	Zoom Out	"CTRL" / "-"
	Fit to Page	"CTRL" / "0" (zero)
	Hand Tool	"SPACEBAR" (hold down)
	Find	"CTRL" / "F"



Schematic

854G Wheel Dozer Hydraulic System

AMP1-UP
A4W1-UP
1JW1-UP

COMPONENT LOCATION

Page 1 of 2



Description	Part Number	Machine Location	Schematic Location
Accumulator - Brake Supply	220-2718	4	D-5
Brake Gp - Foot	112-2273	16	F-5
Brake Gp - Parking	8R-5518	16	G-3
Cooler	190-7624	8	C-12
Cooler - Steering Pilot Oil	190-7625	9	C-6
Cooler - Axle Oil Cooler	115-4831	8	B-2
Cylinder - Lift	153-9938	6	D-10
Cylinder - Lift	153-9938	6	D-10
Cylinder - Tilt Left Hand	9T-3716	5	D-10
Cylinder - Tilt Right Hand	9T-3715	5	D-10
Cylinder - Steer	112-8208	4	E-9
Cylinder - Steer	112-8208	4	E-8
Filter - Pilot Oil	115-2129	9	B-14
Filter - Case Drain	166-4647	8	C-12
Filter - Case Drain	166-4647	7	B-12
Filter - Case Drain	166-4647	7	B-13
Filter - Case Drain	166-4647	4	B-6
Filter - Case Drain	166-4647	4	B-7
Filter - Steering Pilot Oil	115-2129	4	C-5
Filter - Rear Axle Oil	230-3633	17	B-3
Filter - Front Axle Oil	230-3633	17	C-3
Manifold	113-9502	10	C-13
Motor Gp - Fan Drive	159-7166	8	C-11
Pump Gp - Implement Pilot	138-3965	7	B-14
Pump Gp - Implement	112-5381	7	B-13
Pump Gp - Fan Drive/Cooling	186-2821	7	B-11
Pump Gp - Steering	216-4826	4	B-7
Pump Gp - Steering Pilot	136-3965	4	B-5
Pump Gp - Brake Supply	164-5486	7	B-5
Pump Gp - Axle Oil Cooling	229-0659	8	C-2
Pump Gp - Secondary Steering	101-4007	4	C-6
Screen - Implement	174-4502	7	C-13
Screen - Implement	174-4502	7	C-13
Screen - Implement	174-4502	8	C-11

COMPONENT LOCATION

Page 2 of 2



Description	Part Number	Machine Location	Schematic Location
Screen - Fan Drive Charge	196-4747	8	B-11
Screen - Implement	174-4502	4	B-11
Sensor Gp - Brake Pressure (VIMS only)	112-9779	4	E-3
Sensor Gp - Brake Pressure (VIMS only)	112-9779	4	E-3
Sensor Gp - Front Axle Oil Temp	100-3055	13	G-4
Sensor Gp - Fan Pump Discharge	167-1709	7	B-11
Sensor Gp - Rear Axle Oil Temperature	100-3055	14	E-4
Switch - Pressure	117-7773	7	B-14
Switch - Brake Accumulator Low Pressure	175-3244	4	F-4
Switch - Brake Accumulator Low Pressure	175-3244	4	F-4
Switch - Parking Brake/Trans Override	3E-5181	4	G-3
Switch - Parking Brake Pressure	174-4312	4	G-2
Tank Gp - Implement Oil	139-2763	11	B-12
Tank Gp - Steering and Brake	197-1401	12	B-6
Valve Gp - Implement Control	157-0045	3	F-14
Valve Gp - Tilt / Tip	9T-7883	3	C-15
Valve Gp - Dual Tilt Control	225-2321	3	F-12
Valve Gp - Relief	114-4672	10	C-14
Valve Gp - Cooler Bypass	6E-1454	8	C-11
Valve Gp - Cooler Drain	8T-6097	8	C-12
Valve Gp - Fan Speed	191-8735	7	B-10
Valve Gp - Steering Pilot	143-2855	4	B-9
Valve Gp - Steering Neutralizer Right Turn	146-7571	9	C-9
Valve Gp - Steering Neutralizer Left Turn	146-7571	9	C-8
Valve Gp - Check Steering Neutralizer	111-7775	9	D-9
Valve Gp - Steering Standard	112-4597	13	E-7
Valve Gp - Secondary Steering Selector	6E-3078	14	C-7
Valve Gp - Breaker Relief	220-0812	4	B-6
Valve Gp - Breaker Relief	133-1963	4	B-12
Valve Gp - Cooler Drain	8T-6097	4	C-6
Valve Gp - Relief	224-5741	4	C-5
Valve Gp - Check Rear Axle Oil	168-0360	17	B-3
Valve Gp - Check Front Axle Oil	168-0360	17	B-2

TAP LOCATION



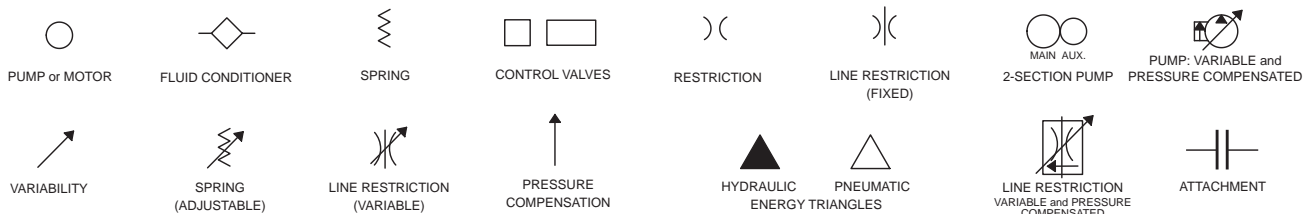
Tap Number	Description	Schematic Location
<u>AA</u>	Implement Relief Pilot Pressure Tap	<u>C-14</u>
<u>BB</u>	Fan Speed Pressure Tap	<u>B-10</u>
<u>CC</u>	Fan Drive Output Pressure Tap	<u>B-11</u>
<u>DD</u>	Implement Relief Lift Pressure Tap	<u>C-13</u>
<u>EE</u>	Implement Relief Tilt Pressure Tap	<u>D-13</u>
<u>FF</u>	Steering Pilot Supply Tap	<u>C-5</u>
<u>GG</u>	Steering Pump Discharge Pressure Tap	<u>D-7</u>
<u>HH</u>	Right Steering Cylinder Pressure Tap	<u>E-9</u>
<u>II</u>	Left Steering Cylinder Pressure Tap	<u>E-8</u>
<u>JJ</u>	Front Service Brakes Accumulator Pressure Tap	<u>E-3</u>
<u>KK</u>	Rear Service Brakes Accumulator Pressure Tap	<u>F-3</u>
<u>LL</u>	Front Service Brakes Pressure Tap	<u>E-4</u>
<u>MM</u>	Rear Service Brakes Pressure Tap	<u>E-4</u>
<u>NN</u>	Front Service Brakes Pressure Tap	<u>G-5</u>
<u>OO</u>	Rear Service Brakes Pressure Tap	<u>E-5</u>

Related Manuals	
Description	Media Number
Parts Manual:	
845G Wheel Dozer	SEBP3992
Machine System:	
Specifications: (Hydraulic System)	SENR2125
Testing and Adjusting: (Hydraulic System)	SENR2127
Specifications: (Steering System)	SENR1348
Testing and Adjusting: (Steering System)	SENR1373
Specifications: (Braking System)	SENR1351
Testing and Adjusting: (Braking System)	SENR1353
Electrical System:	
Schematic: (Electrical System)	RENR6317

FLUID POWER SYMBOLS



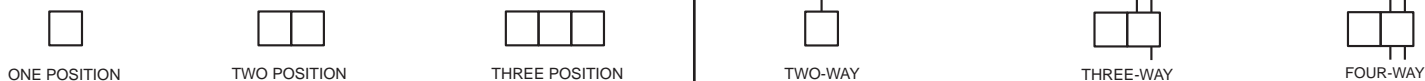
BASIC COMPONENT SYMBOLS



VALVE ENVELOPES

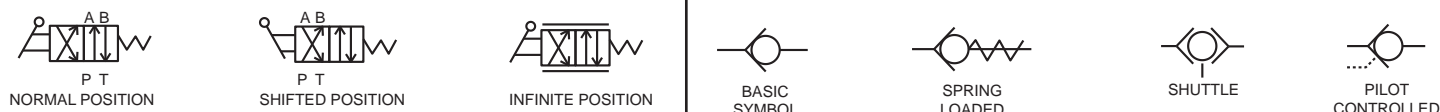
VALVES

VALVE PORTS



CONTROL VALVES

CHECK VALVES

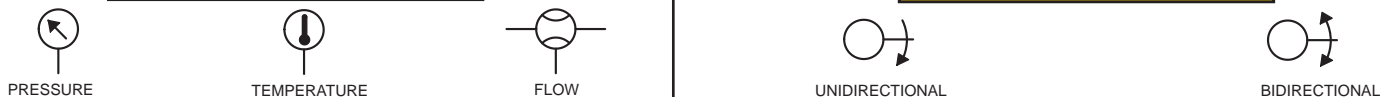


FLUID STORAGE RESERVOIRS



MEASUREMENT

ROTATING SHAFTS



COMBINATION CONTROLS



MANUAL CONTROL SYMBOLS



RELEASED PRESSURE

PILOT CONTROL SYMBOLS

REMOTE SUPPLY PRESSURE



ACCUMULATORS

CROSSING AND JOINING LINES

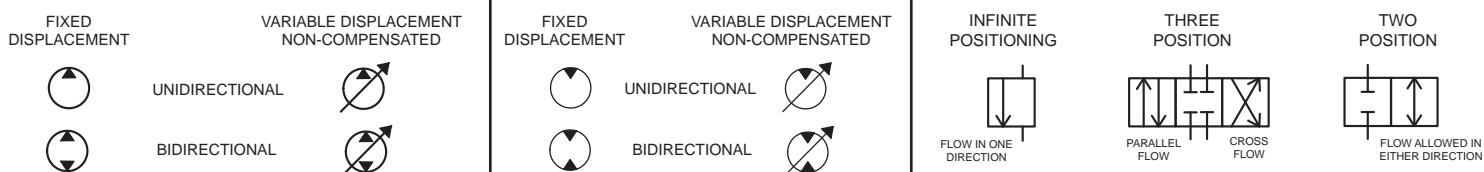
HYDRAULIC AND PNEUMATIC CYLINDERS



HYDRAULIC PUMPS

HYDRAULIC MOTORS

INTERNAL PASSAGEWAYS



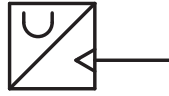
ELECTRICAL SYMBOLS



Hydraulic Symbols (Electrical)



Transducer
(Fluid)



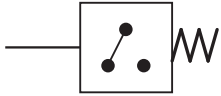
Transducer
(Gas / Air)



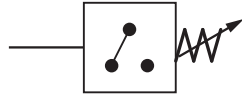
Generator



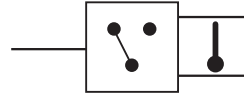
Electric Motor



Pressure Switch



Pressure Switch
(Adjustable)

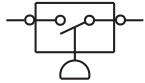


Temperature Switch

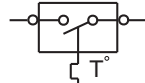


Electrical Wire

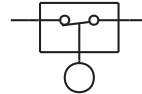
Electrical Symbols (Electrical)



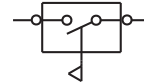
Pressure
Symbol



Temperature
Symbol



Level
Symbol

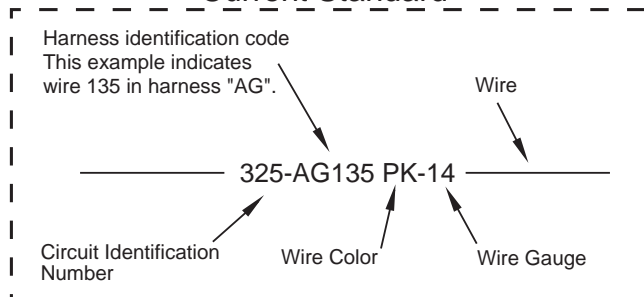


Flow
Symbol

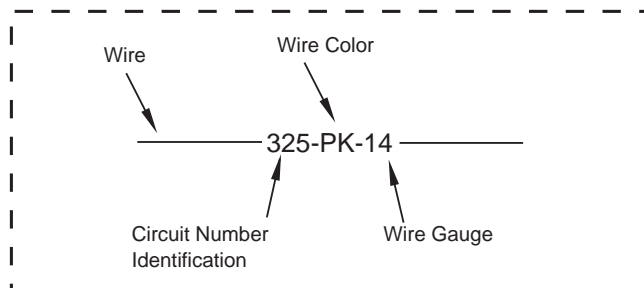
Wire Number Identification Codes

Electrical Schematic Example

Current Standard

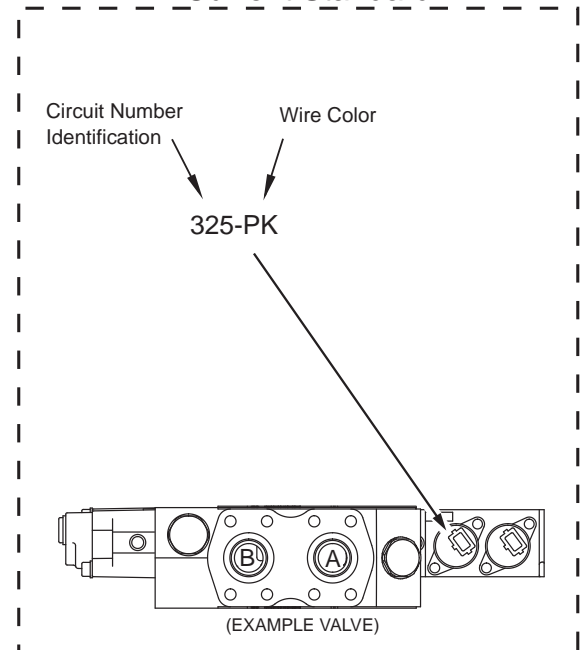


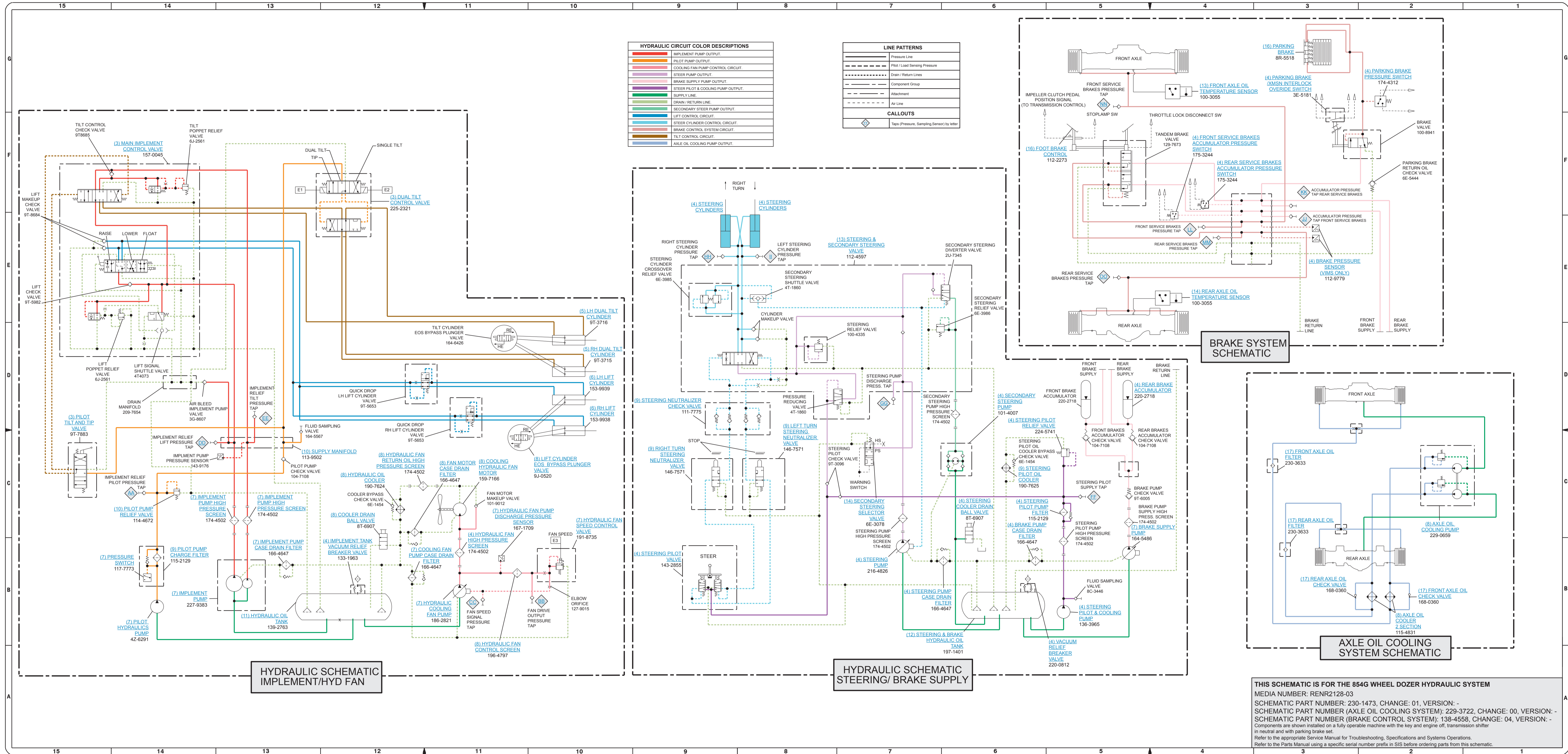
Previous Standard



Hydraulic Schematic Example

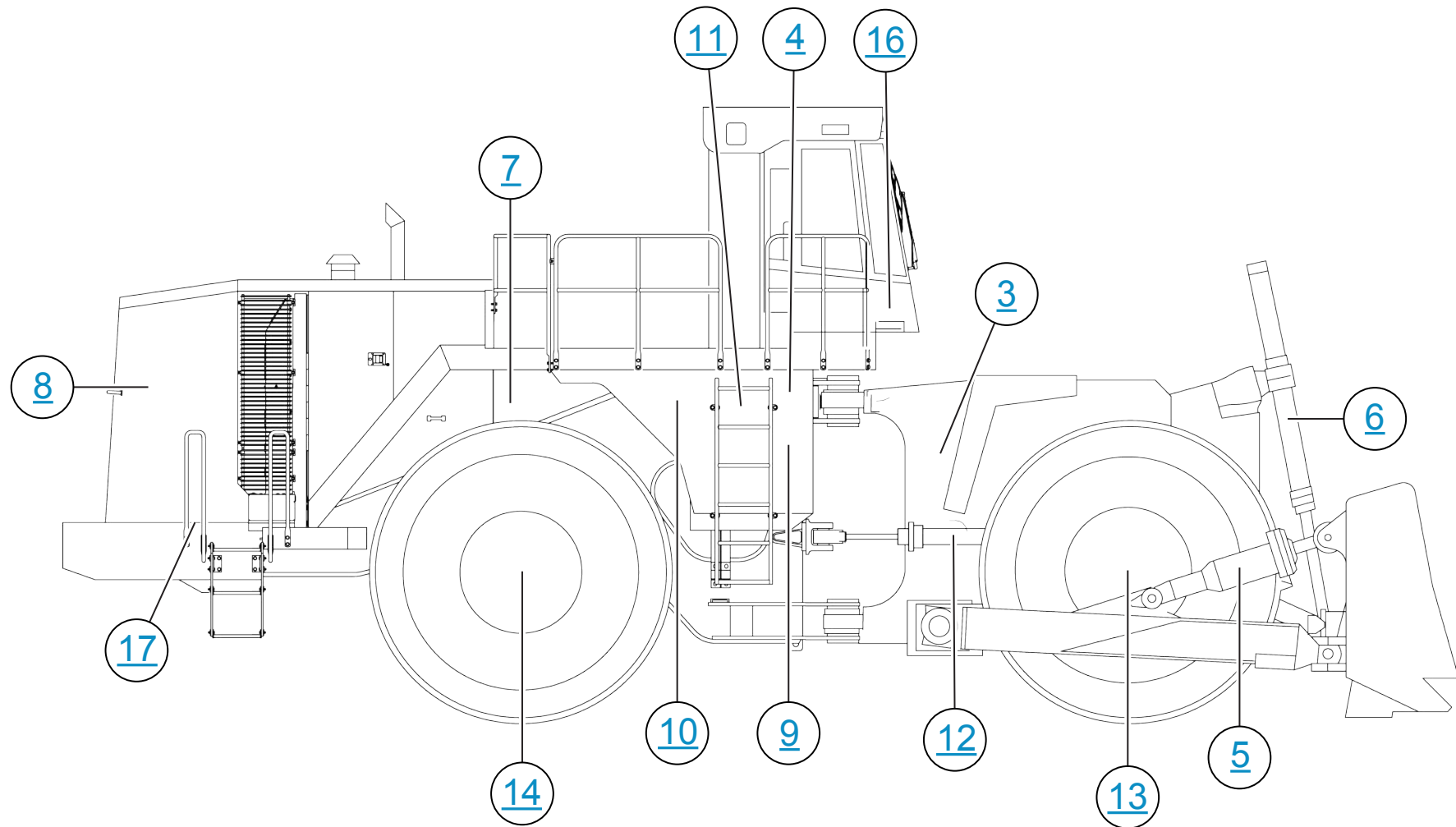
Current Standard



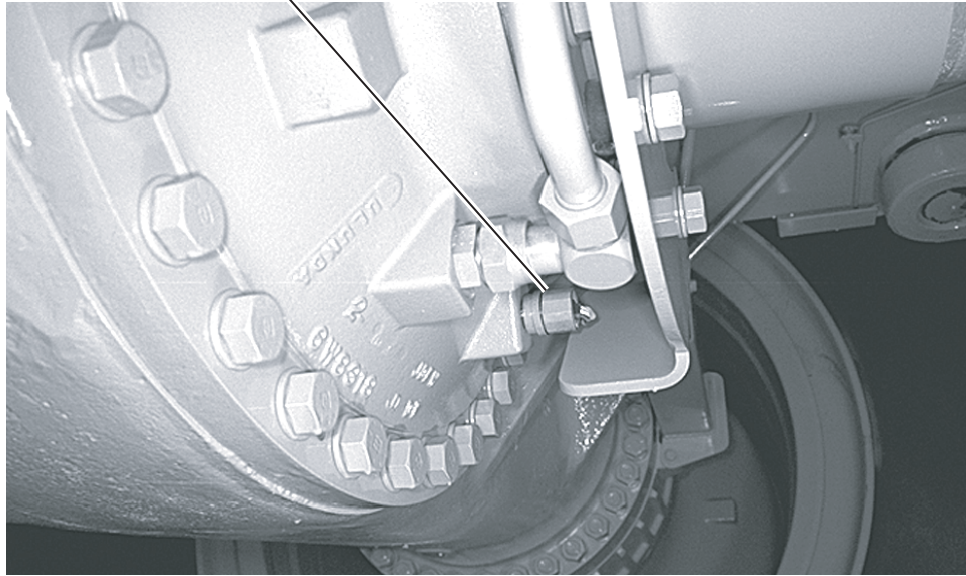


THIS SCHEMATIC IS FOR THE 854G WHEEL DOZER HYDRAULIC SYSTEM
 MEDIA NUMBER: RENR2128-03
 SCHEMATIC PART NUMBER: 230-1473, CHANGE: 01, VERSION: -
 SCHEMATIC PART NUMBER (AXLE OIL COOLING SYSTEM): 229-3722, CHANGE: 00, VERSION: -
 SCHEMATIC PART NUMBER (BRAKE CONTROL SYSTEM): 138-4558, CHANGE: 04, VERSION: -
 Components are shown installed on a fully operable machine with the key and engine off, transmission shift in neutral and with parking brake set.
 Refer to the appropriate Service Manual for Troubleshooting, Specifications and Systems Operations.
 Refer to the Parts Manual using a specific serial number prefix in SIS before ordering parts from this schematic.

MACHINE COMPONENT LOCATIONS

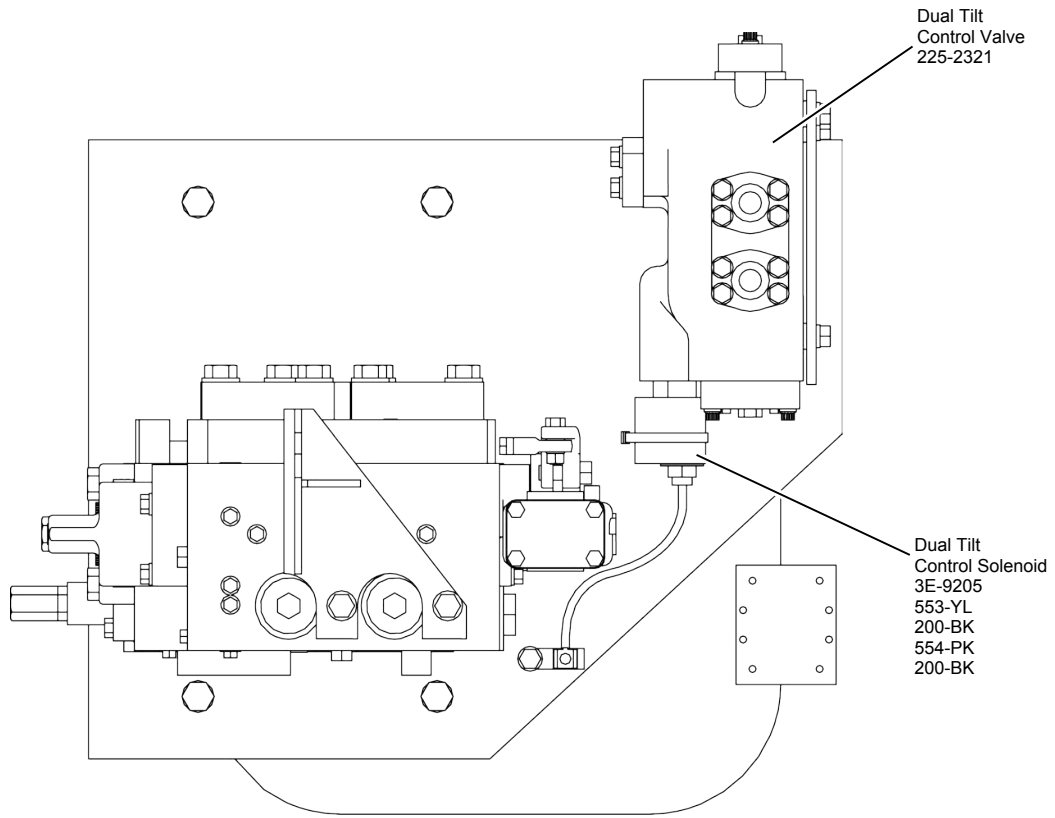


Front Axle Oil
Temperature Sensor
100-3055
K983-BU
J842-BK
446-PU



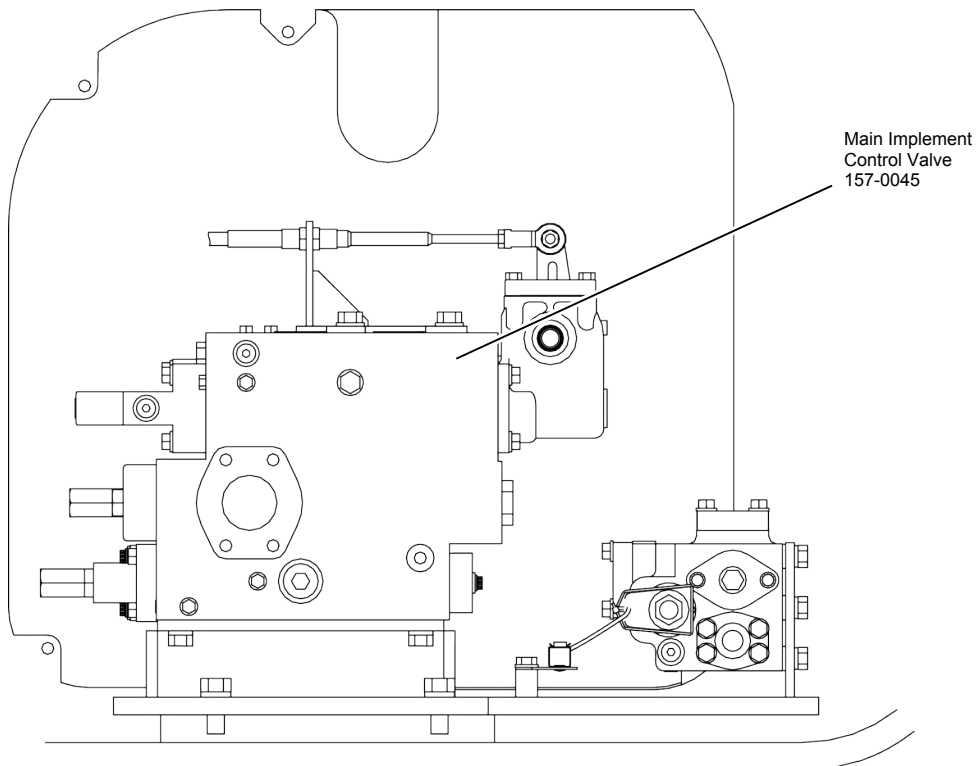
Rear Axle Oil
Temperature Sensor
100-3055
K983-BU
J842-BK
446-PU





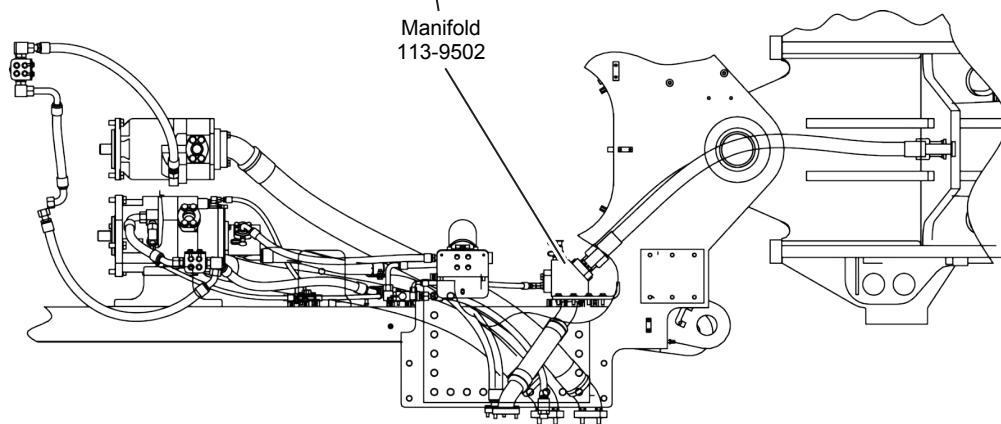
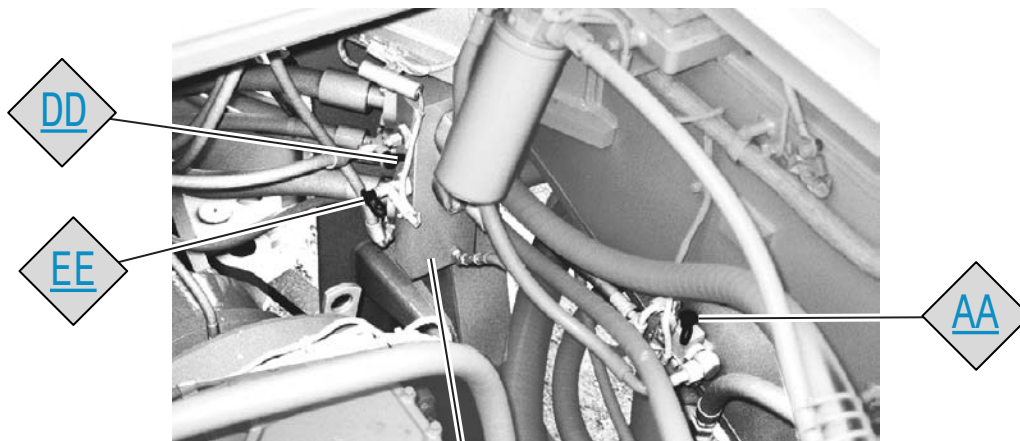
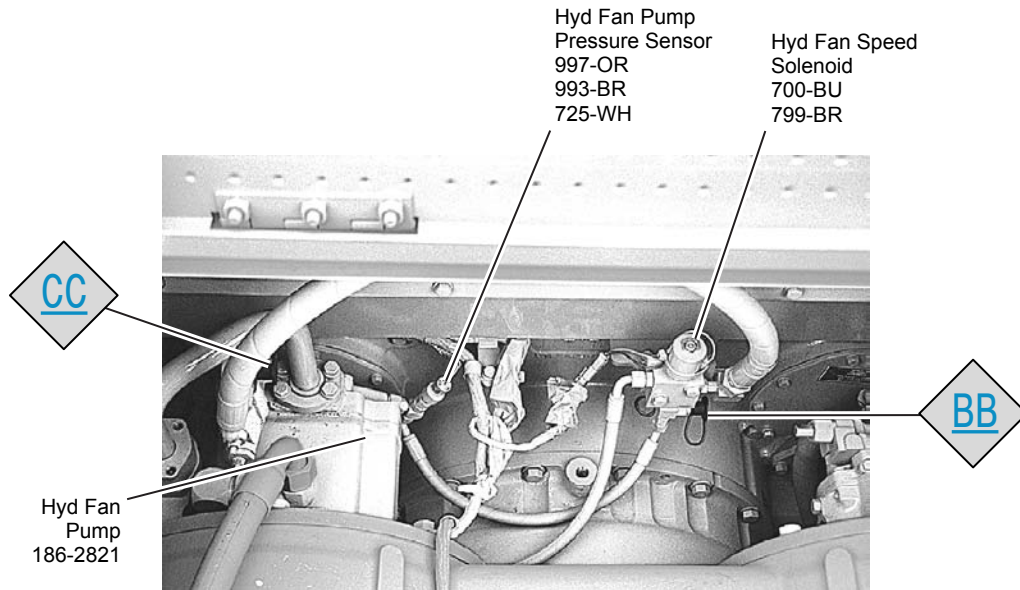
TOP VIEW

FRONT



RIGHT SIDE VIEW

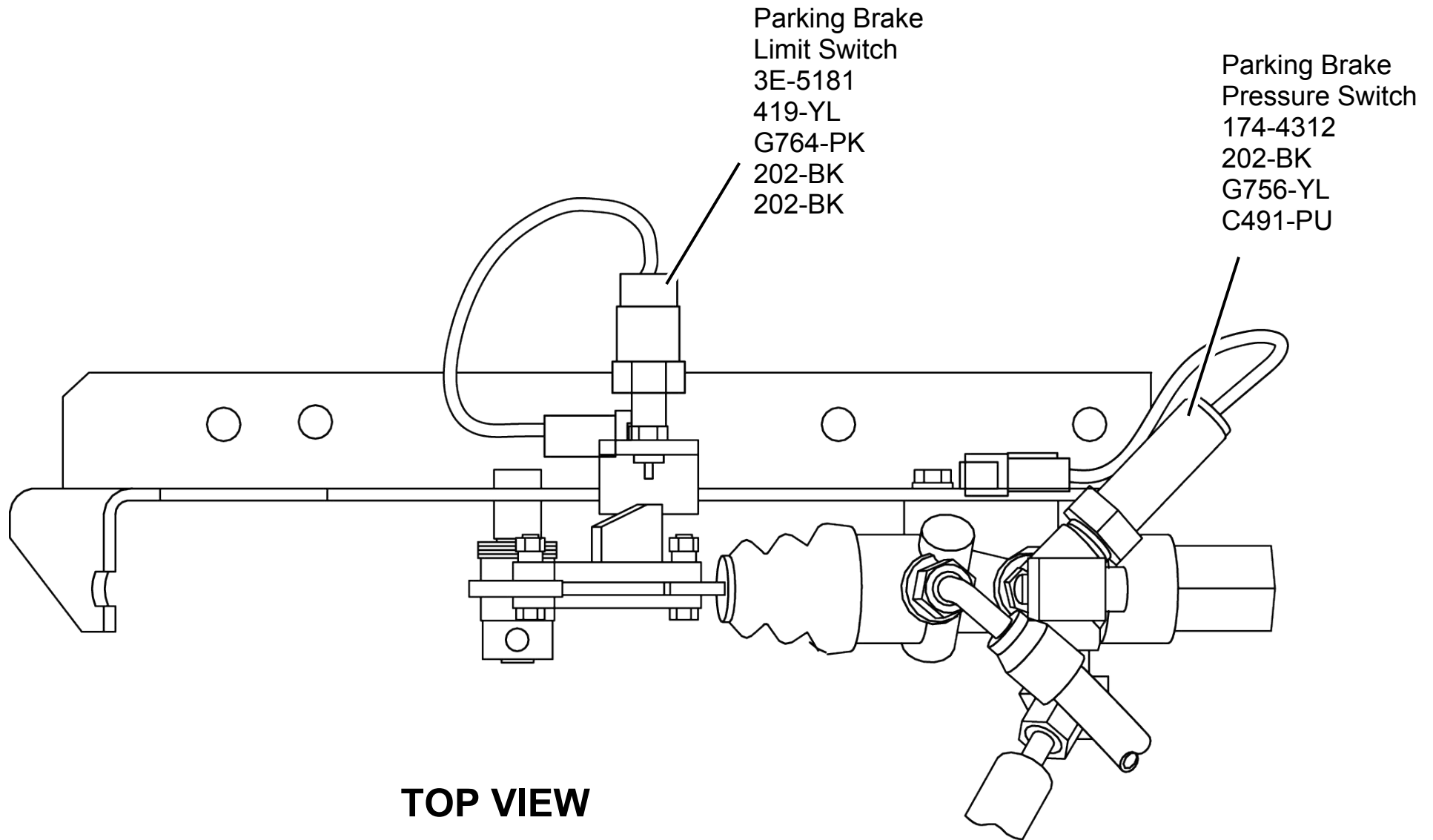
IMPLEMENT/ HYD FAN CIRCUIT



TOP VIEW OF MACHINE

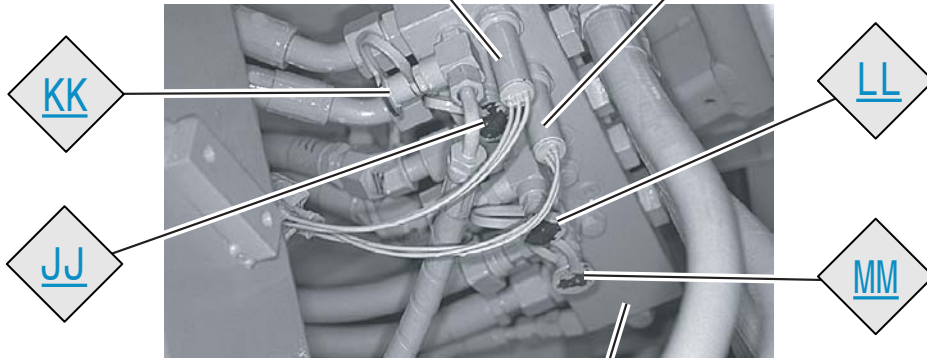
- Hydraulic Fan Discharge Pressure Tap (CC)
- Hydraulic Fan Speed Signal Pressure Tap (BB)
- Pilot Pump Pressure Relief Tap (AA)
- Implement Lift Pressure Relief Tap (DD)
- Implement Tilt/Tip Pressure Relief Tap (EE)

PARKING BRAKE



Rear Service Brakes
Oil Pressure Sensor
112-9779
J842-BK
433-BU

Front Service Brakes
Oil Pressure Sensor
112-9779
J842-BK
433-BU



Rear Service Brakes
Accumulator Pressure
Switch
175-3244
J842-BK
433-BU

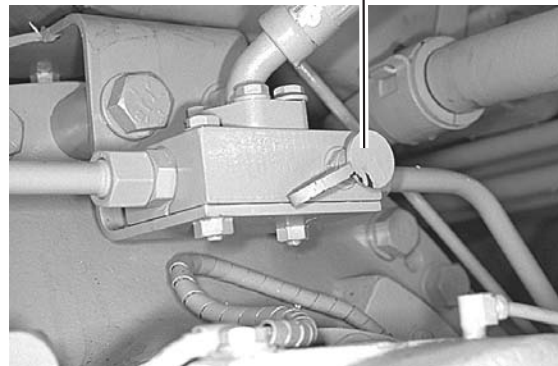
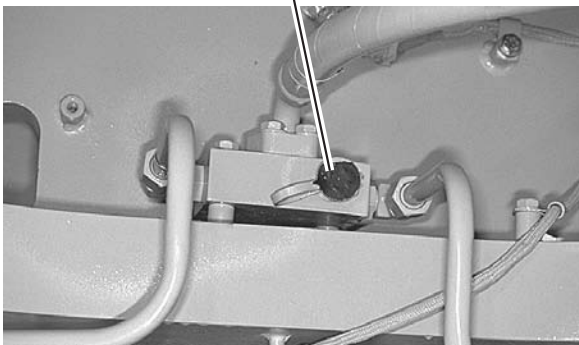
Brake
Manifold



Front Service Brakes
Accumulator Pressure
Switch
175-3244
J842-BK
432-PK

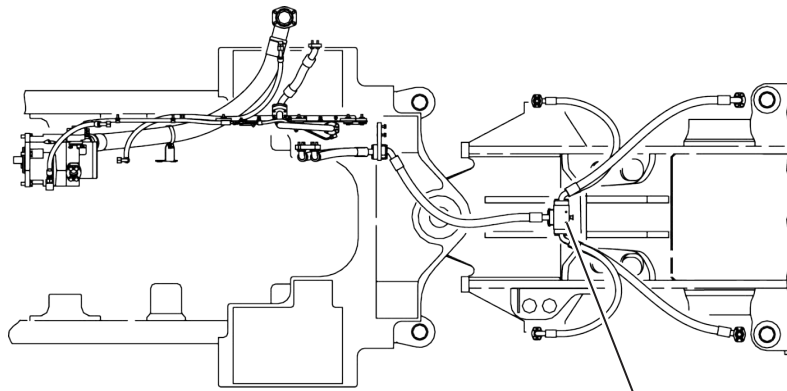
NN

OO



Front Service Brakes Accumulator Pressure Tap (JJ)
Rear Service Brakes Accumulator Pressure Tap (KK)
Front Service Brake Pressure Tap (LL) and (NN)
Rear Service Brake Pressure Tap (MM) and (OO)

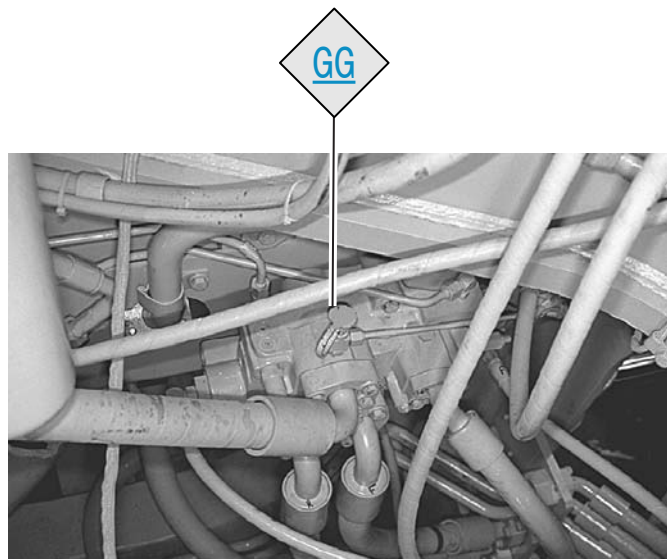
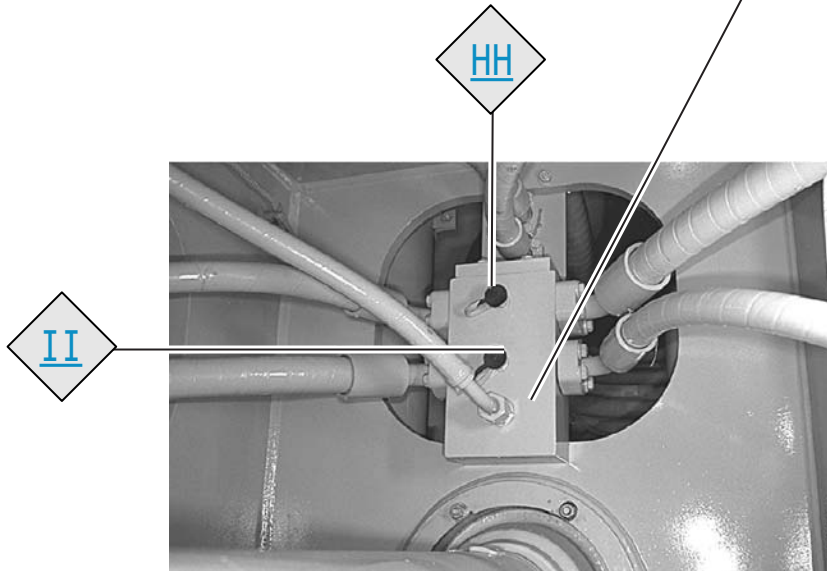
STEERING CIRCUITS



FRONT

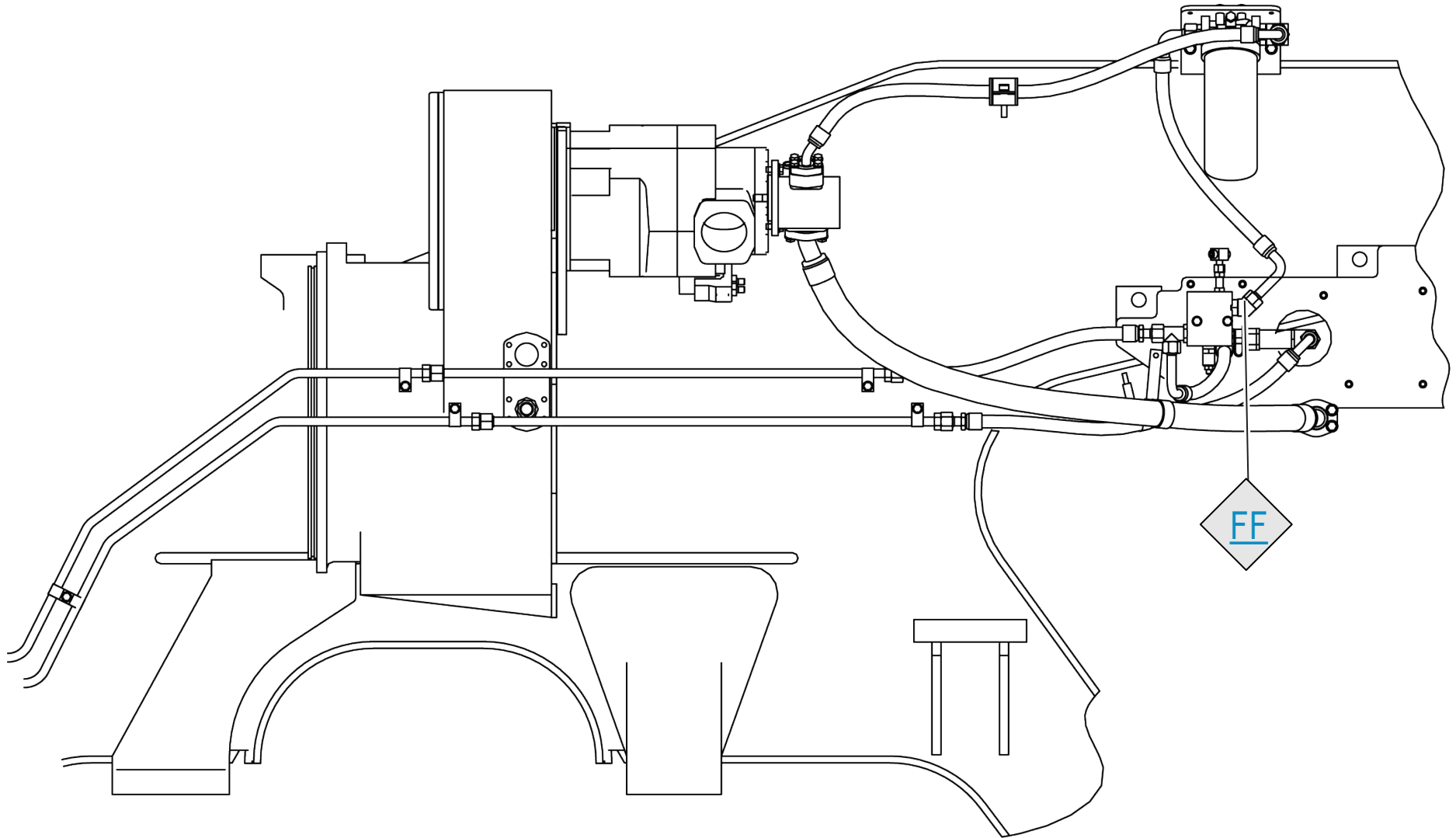
TOP VIEW OF MACHINE

Manifold



Steering Pump Discharge Pressure Tap (GG)
Right Steering Cylinder Pressure Tap (HH)
Left Steering Cylinder Pressure Tap (II)

STEERING PILOT SUPPLY TAP



LEFT SIDE VIEW

Steering Pilot Supply Tap (FF)