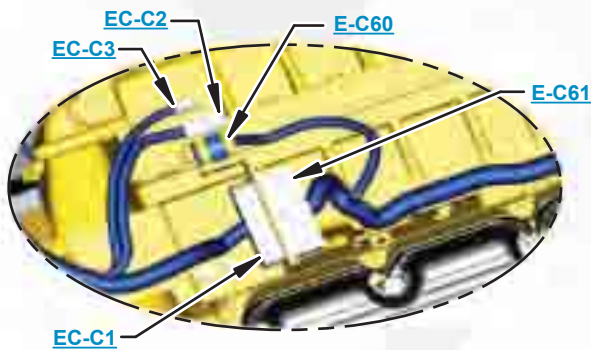


This document is best viewed at a screen resolution of 1024 X 768.

To set your screen resolution do the following:
RIGHT CLICK on the **DESKTOP**.
Select **PROPERTIES**.
CLICK the **SETTINGS TAB**.
MOVE THE SLIDER under **SCREEN RESOLUTION** until it shows **1024 X 768**.
CLICK OK to apply the resolution.

The Bookmarks panel will allow you to quickly navigate to points of interest.



Click on any text that is BLUE and underlined. These are hyperlinks that can be used to navigate the schematic and machine views.

VIEW ALL CALLOUTS

When only one callout is showing on a machine view this button will make all of the callouts visible. This button is located in the top right corner of every machine view page.

HOTKEYS (Keyboard Shortcuts)		
	FUNCTION	KEYS
	Zoom In	"CTRL" / "+"
	Zoom Out	"CTRL" / "-"
	Fit to Page	"CTRL" / "0" (zero)
	Hand Tool	"SPACEBAR" (hold down)
	Find	"CTRL" / "F"



Schematic

854K WHEEL DOZER Hydraulic System

H8M1-UP
H9K1-UP

COMPONENT TABLE



Component Location			
Description	Part Number	Machine Location	Schematic Location
Accumulator GP - Brake (Standard) (ATCH)	220-2718 350-5572	1	B-5
Accumulator GP - Pilot Oil	245-2975	2	F-4
Brake GP - Parking	294-7730	3	E-7
Control GP - Foot Brake	305-5531	4	E-8
Core AS - Axle Oil Cooler (LH)	115-4831	5	B-4
Core AS - Axle Oil Cooler (RH)	115-4831	6	B-2
Core AS - Hydraulic Oil Cooler	261-3853	7	D-2
Core AS - Steering Oil Cooler	190-7625	8	B-6
Cylinder GP - Lift (LH)	153-9939	9	E-2
Cylinder GP - Lift (RH)	153-9938	10	D-2
Cylinder GP - Ripper	132-5123	11	D-4
Cylinder GP - Steering	157-1352	12	C-8
Cylinder GP - Tilt (LH)	308-2462	13	E-2
Cylinder GP - Tilt (RH)	308-2464	14	E-2
Filter GP - Oil	295-6259	15	D-2
Filter GP - Oil (Axle Oil Cooler) (LH)	230-3633	16	C-4
Filter GP - Oil (Axle Oil Cooler) (RH)	230-3633	17	B-2
Filter GP - Oil (Hydraulic Fan Motor Case Drain)	166-4647	18	D-3
Filter GP - Oil (Hydraulic Fan)	280-3444	19	D-2
Filter GP - Oil (Implement Pump Case Drain)	166-4647	20	D-3
Filter GP - Oil (Service Brake)	348-9235	21	A-6
Filter GP - Oil (Steering Oil Cooler)	115-2129	22	B-6
Filter GP - Oil (Steering Pump Case Drain)	166-4647	23	A-7
Manifold GP - Control (Axle Oil Cooler)	257-5613	24	B-4
Manifold GP - Control (Brake Accumulator Charge)	273-8751	25	B-6
Manifold GP - Pilot	332-1115	26	F-4
Motor GP - Hydraulic Fan	159-7166	27	D-2
Plunger - Lift Cylinders	9J-0520	28	E-2
Plunger - Tilt Cylinders	164-6426	29	E-1
Pump and Motor GP - Axle Oil Cooler	340-2113	30	B-3
Pump - Ripper	261-5630	31	D-4
Pump GP - Brake	164-5486	32	A-6
Pump GP - Hydraulic Fan	379-9740	33	D-2
Pump GP - Implement	227-9383	34	D-3
Pump GP - Secondary Steering	101-4007	35	B-7
Pump GP - Steering	216-4826	36	A-7
Pump GP - Steering Oil Cooler, Pilot	136-3965	37	A-6
Screen GP - High Pressure (LH)	174-4502	38	E-3
Screen GP - High Pressure (RH)	288-5769	39	E-3
Screen GP - High Pressure (Steering)	174-4502	40	B-7
Screen GP - Hydraulic Fan Pump, Motor	288-5769	41	D-2
Screw - Purge (Steering Cylinders)	9F-2167	42	C-8
Screw - Purge (Tilt Cylinders)	9F-2167	43	E-2
Sensor GP - Liquid Level (Hydraulic Tank) (Full)	306-6875	44	D-4
Sensor GP - Liquid Level (Hydraulic Tank) (Low)	306-6875	45	C-4
Sensor GP - Liquid Level (Steering, Brake Tank) (Full)	306-6875	46	A-7
Sensor GP - Liquid Level (Steering, Brake Tank) (Low)	309-6875	47	A-7
Sensor GP - Pressure (Brake Manifold)	344-7389	48	D-6
Sensor GP - Pressure (Implement Pump)	344-7391	49	D-3

Component Location			
Description	Part Number	Machine Location	Schematic Location
Sensor GP - Pressure (Pilot Manifold)	344-7389	50	F-3
Sensor GP - Pressure (Steering Pilot Relief Valve)	344-7389	51	B-6
Sensor GP - Pressure (Steering Pump)	344-7391	52	B-7
Sensor GP - Temperature (Axle Oil) (Front)	288-8390	53	E-7
Sensor GP - Temperature (Axle Oil) (Rear)	288-8390	54	D-7
Sensor GP - Temperature (Hydraulic Oil)	256-6453	55	C-3
Sensor GP - Temperature (Steering Oil)	288-8390	56	A-6
Switch AS - Limit (Parking Brake)	171-7085	57	E-6
Switch AS - Pressure (Hydraulic Fan Filter)	339-4361	58	D-2
Switch AS - Pressure (Hydraulic Fan Motor Case Drain Filter)	339-4361	59	D-3
Switch AS - Pressure (Implement Pump Case Drain Filter)	339-4361	60	D-3
Switch AS - Pressure (Parking Brake Oil)	327-4608	61	E-6
Switch AS - Pressure (Secondary Steering Oil)	313-5104	62	B-7
Switch AS - Pressure (Steering Oil Cooler Filter Bypass)	339-4361	63	B-6
Switch AS - Pressure (Steering Pump Case Drain Filter)	339-4361	64	A-7
Tank GP - Hydraulic	348-9701	65	C-3
Tank GP - Steering, Brake	282-3057	66	A-7
Valve - Breaker Relief	358-9475	67	D-3
Valve - Bypass (Axle Oil Cooler) (LH)	260-3789	68	C-4
Valve - Bypass (Axle Oil Cooler) (RH)	260-3789	69	B-2
Valve AS - Check (Service Brake)	9T-1013	70	E-6
Valve GP - Brake Control (Parking)	106-1774	71	E-6
Valve GP - Brake Control (Service)	269-3289	72	E-7
Valve GP - Check (Air Purge)	3G-8607	73	D-3
Valve GP - Check (Hydraulic Fan Lines)	353-2313	74	D-2
Valve GP - Check (Pilot Manifold)	177-3868	75	F-4
Valve GP - Check (Steering Pilot Relief Valve)	353-2313	76	B-6
Valve GP - Check (Steering)	111-7775	77	B-8
Valve GP - Demand Fan	191-8735	78	D-1
Valve GP - Diverter (Axle Cooler Motor Pilot Oil)	166-8497	79	B-4
Valve GP - Main Control	351-9905	80	E-4
Valve GP - Makeup (Hydraulic Fan Motor)	101-9012	81	D-2
Valve GP - Manual	112-1817	82	E-3
Valve GP - Pilot (Stic Steering)	249-5615	83	A-8
Valve GP - Pressure Reducing (Pilot)	252-8038	84	F-4
Valve GP - Relief (Brake Accumulator) (Standard) (ATCH)	360-0193 234-0351	85	A-6
Valve GP - Relief (Pump Backup)	100-4335	86	B-7
Valve GP - Relief (Steering Cylinder Crossover)	6E-3985	87	C-8
Valve GP - Ripper Control	380-0368	88	D-4
Valve GP - Secondary Steering	301-4616	89	C-7
Valve GP - Selector and Pressure Control (Secondary Steering)	6E-3078	90	B-7
Valve GP - Sequence (Axle Oil Cooler)	278-0426	91	A-4
Valve GP - Shuttle (Pilot Lines)	249-7805	92	E-3
Valve GP - Solenoid (Axle Oil Cooler Activate, Deactivate)	329-5064	93	B-3
Valve GP - Solenoid (Dual Tilt)	3E-9205	94	E-2
Valve GP - Solenoid (Pilot Accumulator)	233-7126	95	F-4
Valve GP - Solenoid and Pressure Reducing (Proportional Reducing)	111-9916	96	F-4
Valve GP - Steering Neutralizer (LH)	296-5662	97	A-8
Valve GP - Steering Neutralizer (RH)	296-5662	98	A-8
Valve GP - Tilt Control (Dual)	225-2321	99	E-2

Tap Location Pressure and Sampling

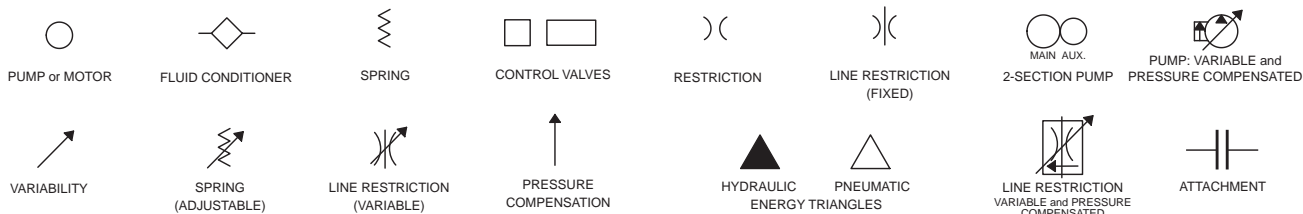
Tap Number	Description	Schematic Location
<u>A</u>	Steering Right Cylinder	<u>C-6</u>
<u>B</u>	Steering Left Cylinder	<u>C-6</u>
<u>C</u>	Steering Pump Discharge	<u>C-6</u>
<u>D</u>	Steering Pilot Supply	<u>C-6</u>
<u>E</u>	Brake Pump Discharge	<u>C-6</u>
<u>F</u>	Rear Brake Accumulator	<u>C-6</u>
<u>G</u>	Front Brake Accumulator	<u>C-6</u>
<u>H</u>	Front Service Brake Pressure	<u>C-6</u>
<u>I</u>	Rear Service Brake Pressure	<u>C-6</u>
<u>J</u>	Implement Relief - Lift	<u>E-3</u>
<u>K</u>	Implement Relief - Tilt	<u>E-3</u>
L	Fan Pump Discharge	<u>D-2</u>
M	Fan Pump Signal	<u>D-2</u>
<u>N</u>	Axle Motor Supply	<u>C-3</u>
<u>O</u>	Rear Pump Discharge	<u>C-3</u>
<u>P</u>	Front Pump Discharge	<u>C-3</u>

Related Manuals	
Description	Media Number
Parts Manual:	
Parts Book:	SEBP5718
Machine System:	
Disassembly and Assembly Machine System	KENR5573
Specifications	KENR7596
Systems Operation\Testing and Adjusting	REN6398
Electrical System:	
Schematic H8M	KENR7564
Schematic H9K	KENR5549

FLUID POWER SYMBOLS



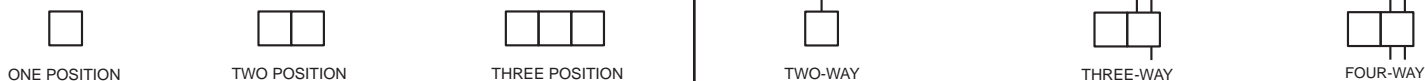
BASIC COMPONENT SYMBOLS



VALVE ENVELOPES

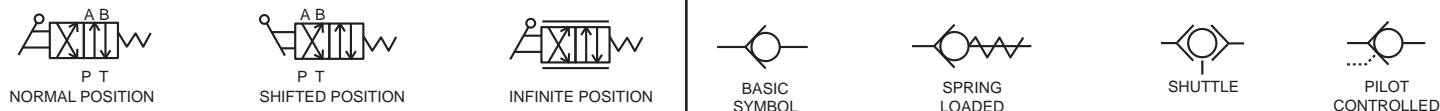
VALVES

VALVE PORTS



CONTROL VALVES

CHECK VALVES



FLUID STORAGE RESERVOIRS



MEASUREMENT

ROTATING SHAFTS



COMBINATION CONTROLS



MANUAL CONTROL SYMBOLS



RELEASED PRESSURE

PILOT CONTROL SYMBOLS

REMOTE SUPPLY PRESSURE



ACCUMULATORS

CROSSING AND JOINING LINES

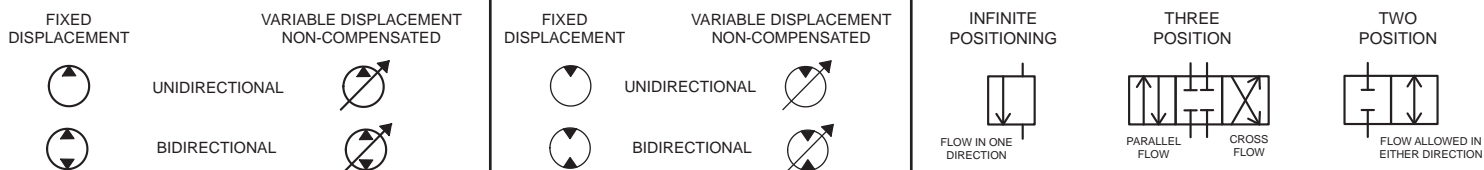
HYDRAULIC AND PNEUMATIC CYLINDERS



HYDRAULIC PUMPS

HYDRAULIC MOTORS

INTERNAL PASSAGEWAYS



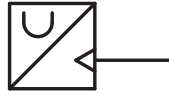
ELECTRICAL SYMBOLS



Hydraulic Symbols (Electrical)



Transducer
(Fluid)



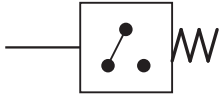
Transducer
(Gas / Air)



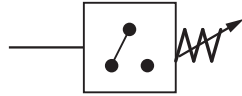
Generator



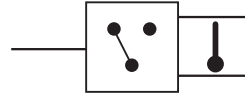
Electric Motor



Pressure Switch



Pressure Switch
(Adjustable)

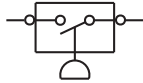


Temperature Switch

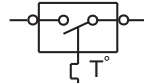


Electrical Wire

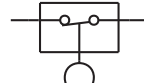
Electrical Symbols (Electrical)



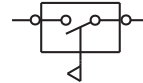
Pressure
Symbol



Temperature
Symbol



Level
Symbol

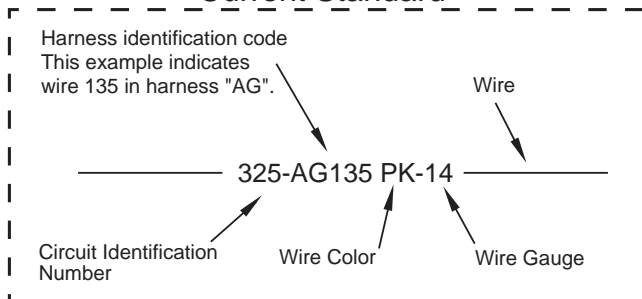


Flow
Symbol

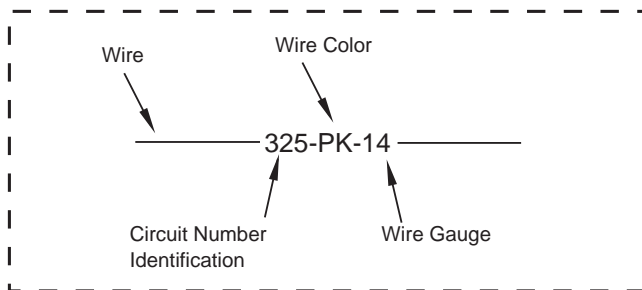
Wire Number Identification Codes

Electrical Schematic Example

Current Standard

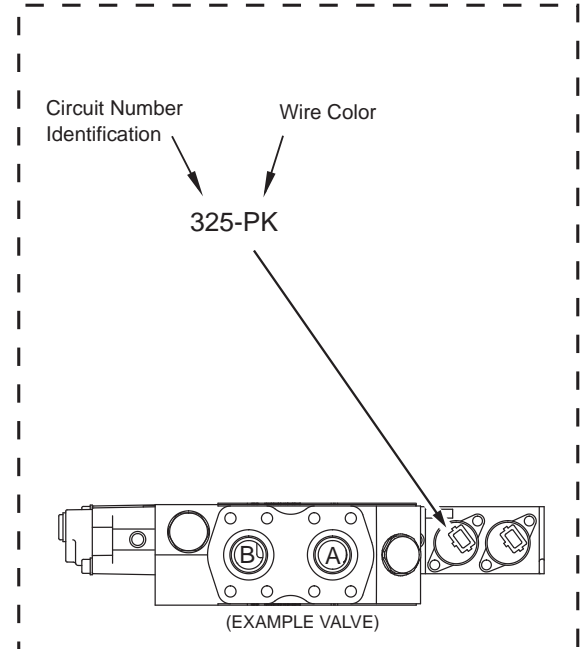


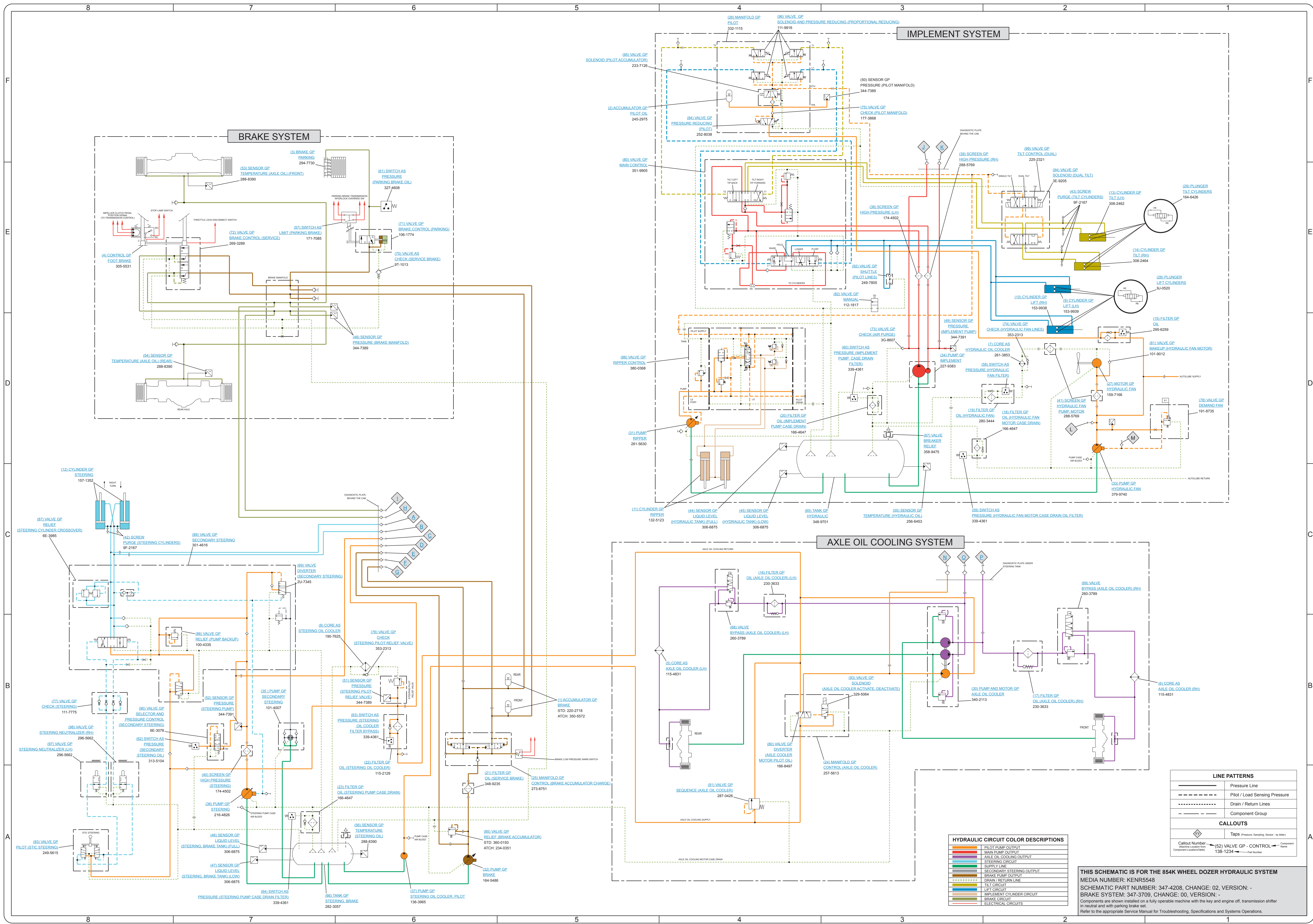
Previous Standard



Hydraulic Schematic Example

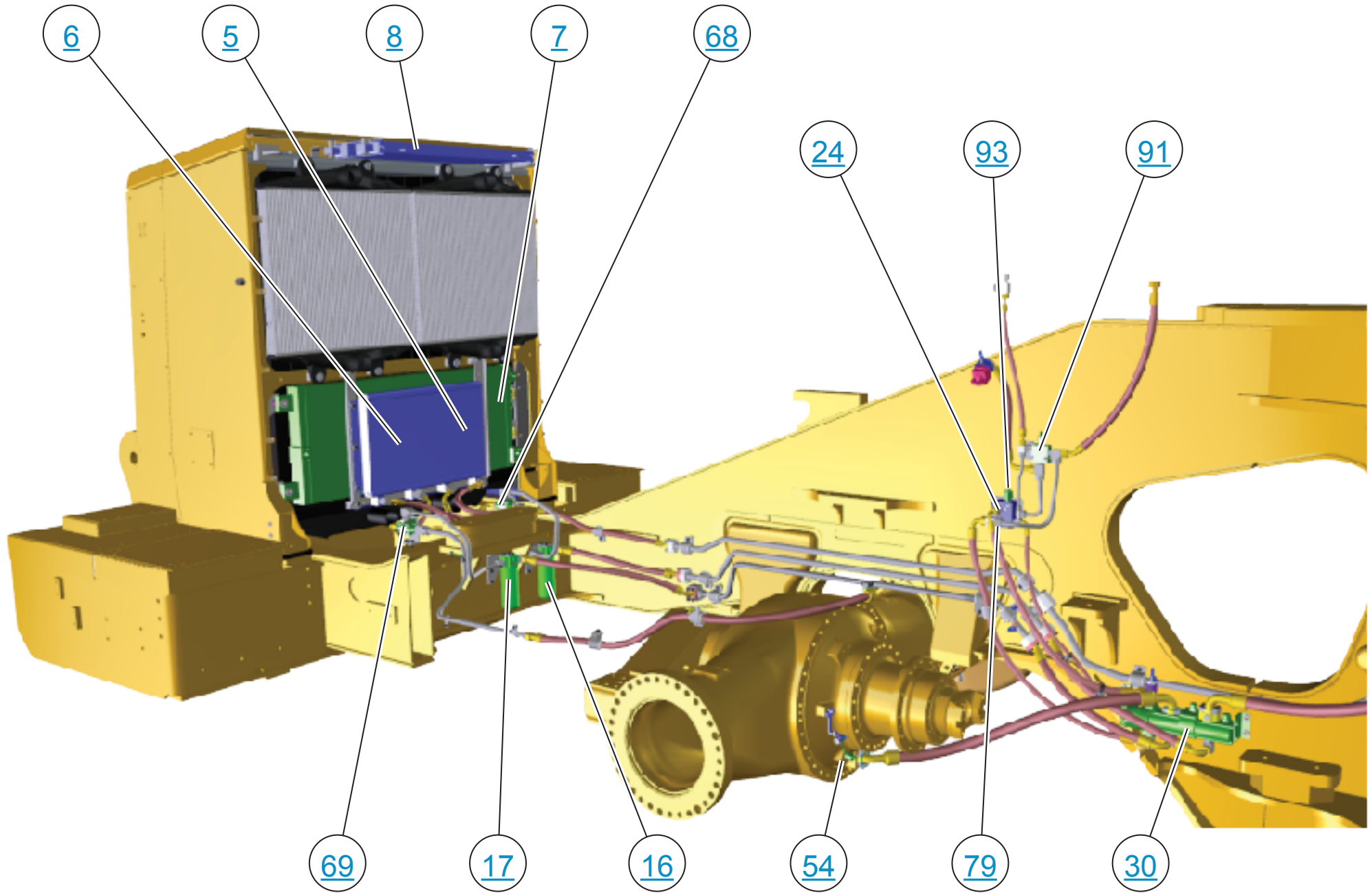
Current Standard



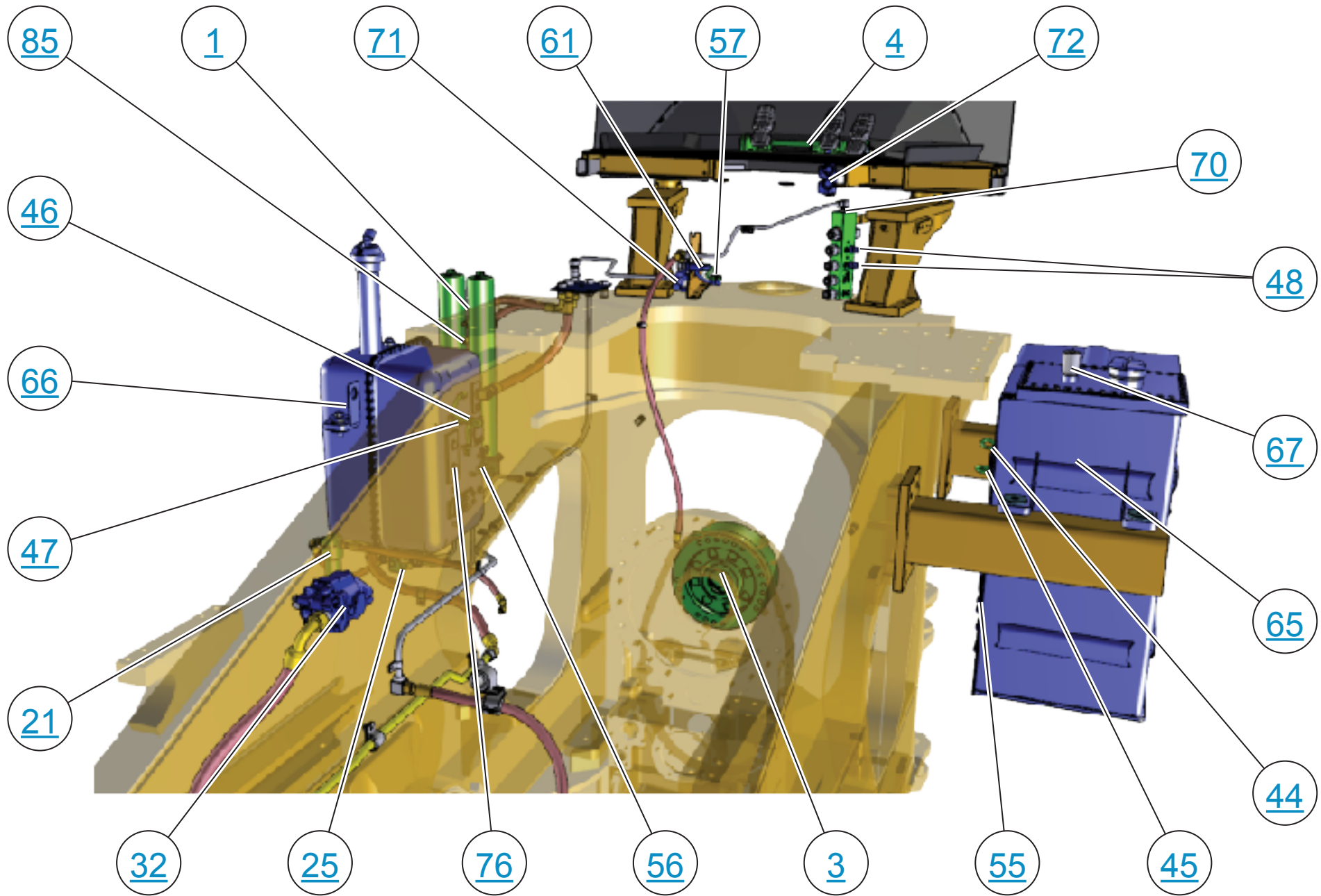


THIS SCHEMATIC IS FOR THE 854K WHEEL DOZER HYDRAULIC SYSTEM
 MEDIA NUMBER: KENR5548
 SCHEMATIC PART NUMBER: 347-4208, CHANGE: 02, VERSION: -
 BRAKE SYSTEM: 347-3709, CHANGE: 00, VERSION: -
 Components are shown installed on a fully operable machine with the key and engine off, transmission shifter in neutral and with parking brake set.
 Refer to the appropriate Service Manual for Troubleshooting, Specifications and Systems Operations.

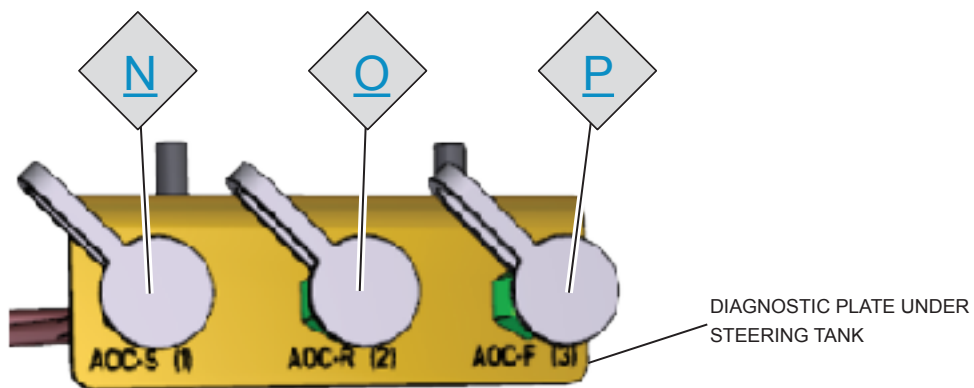
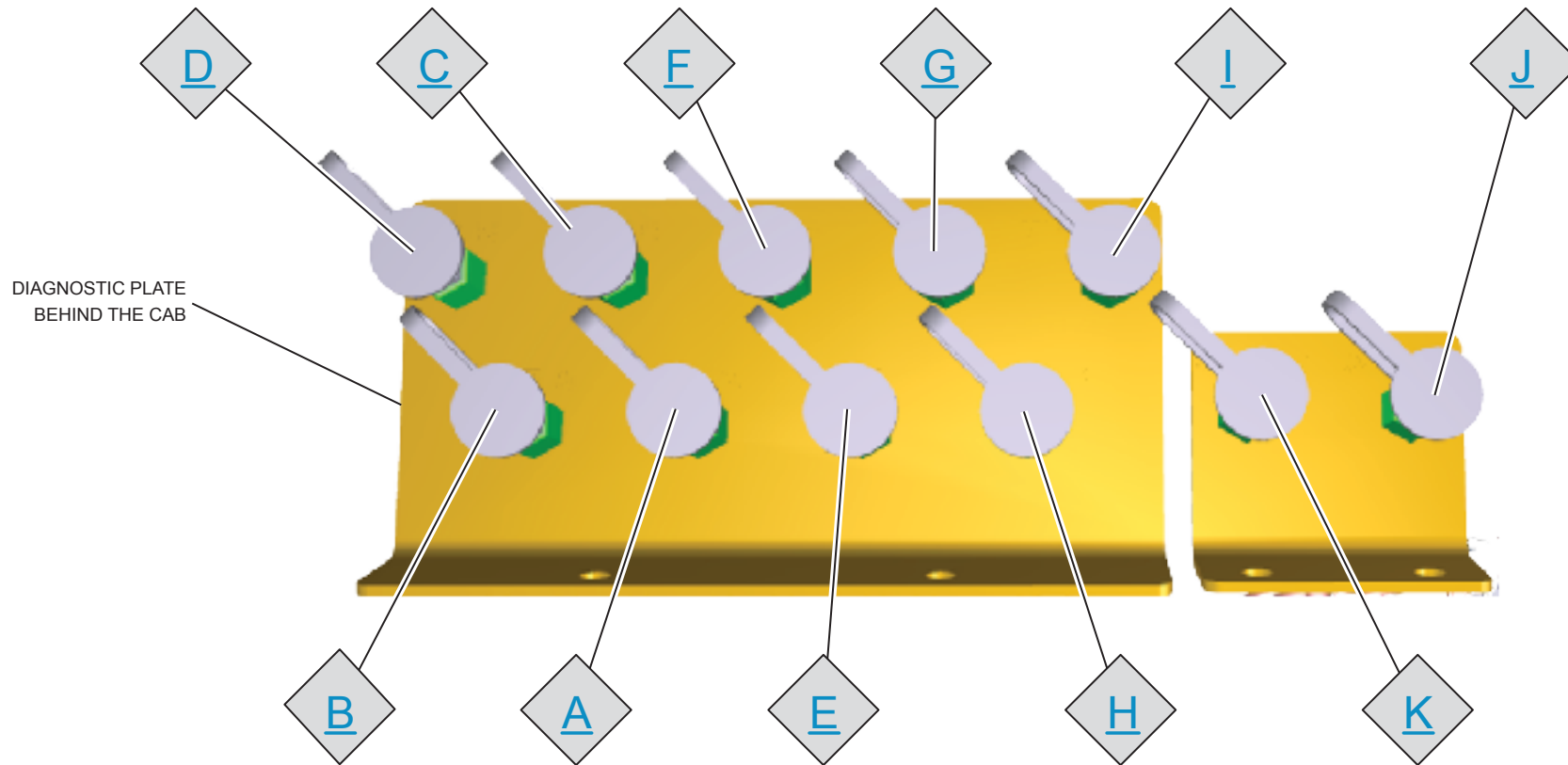
AXLE OIL COOLING SYSTEM



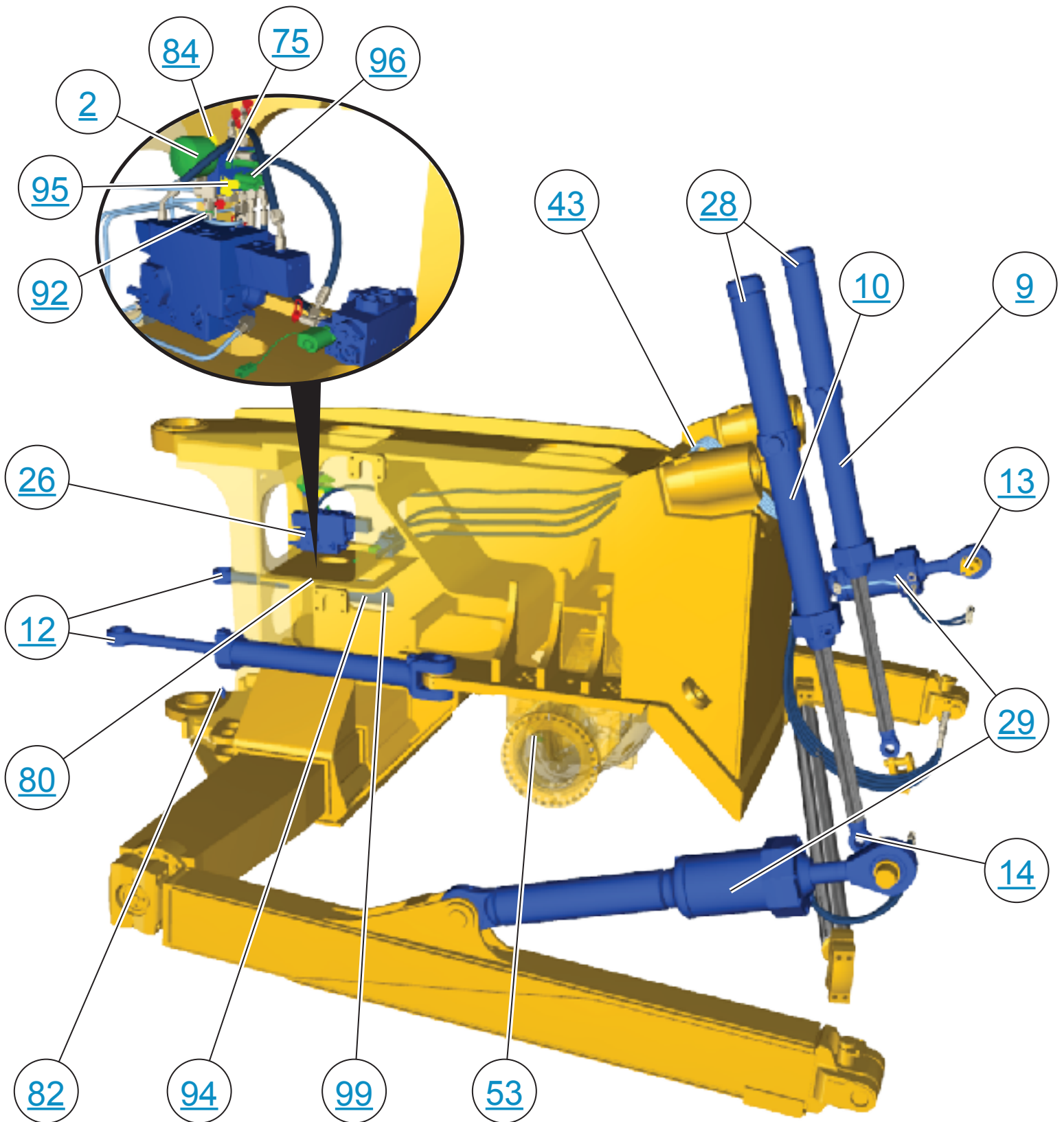
BRAKE SYSTEM



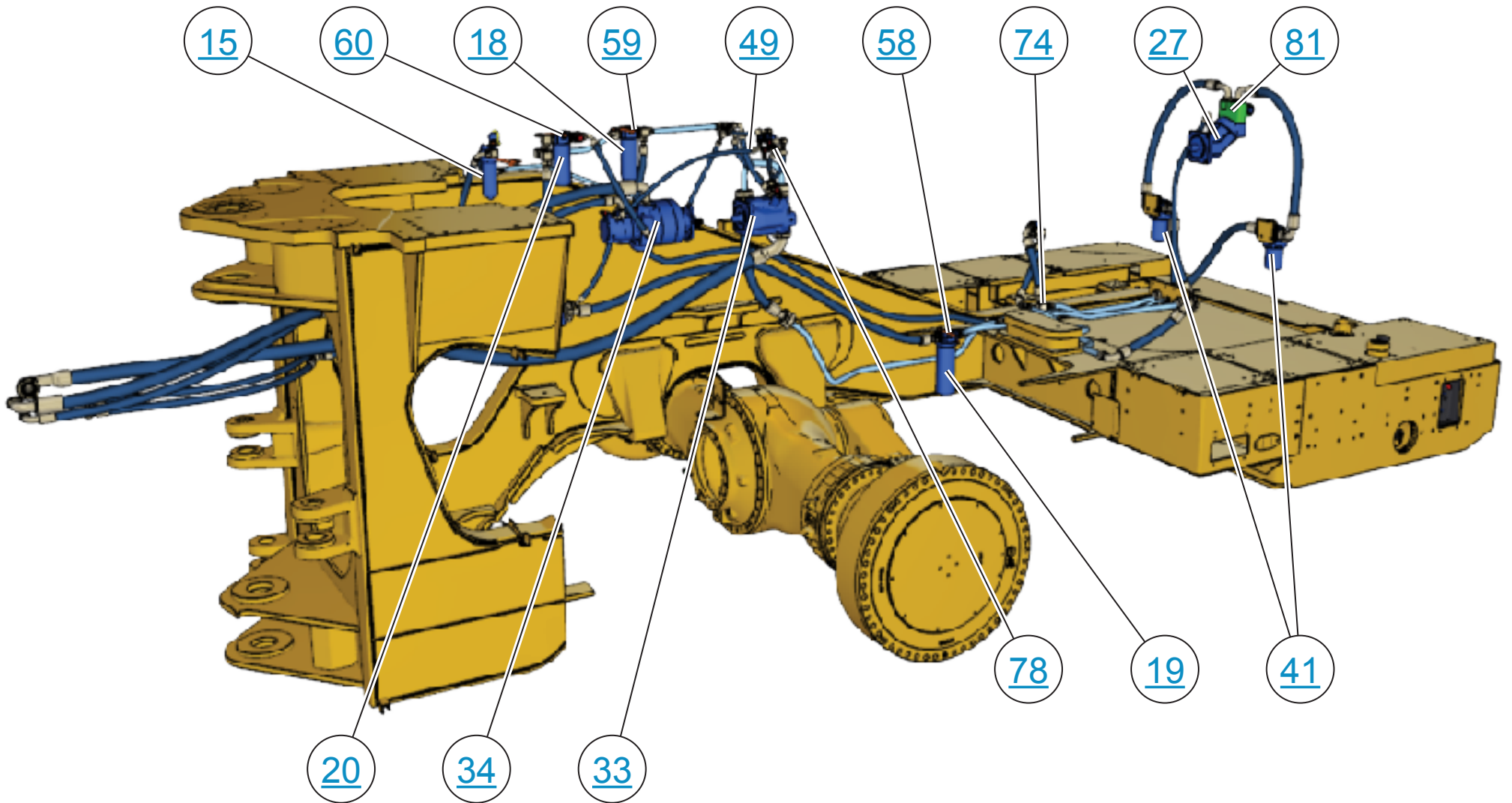
DIAGNOSTIC PLATES

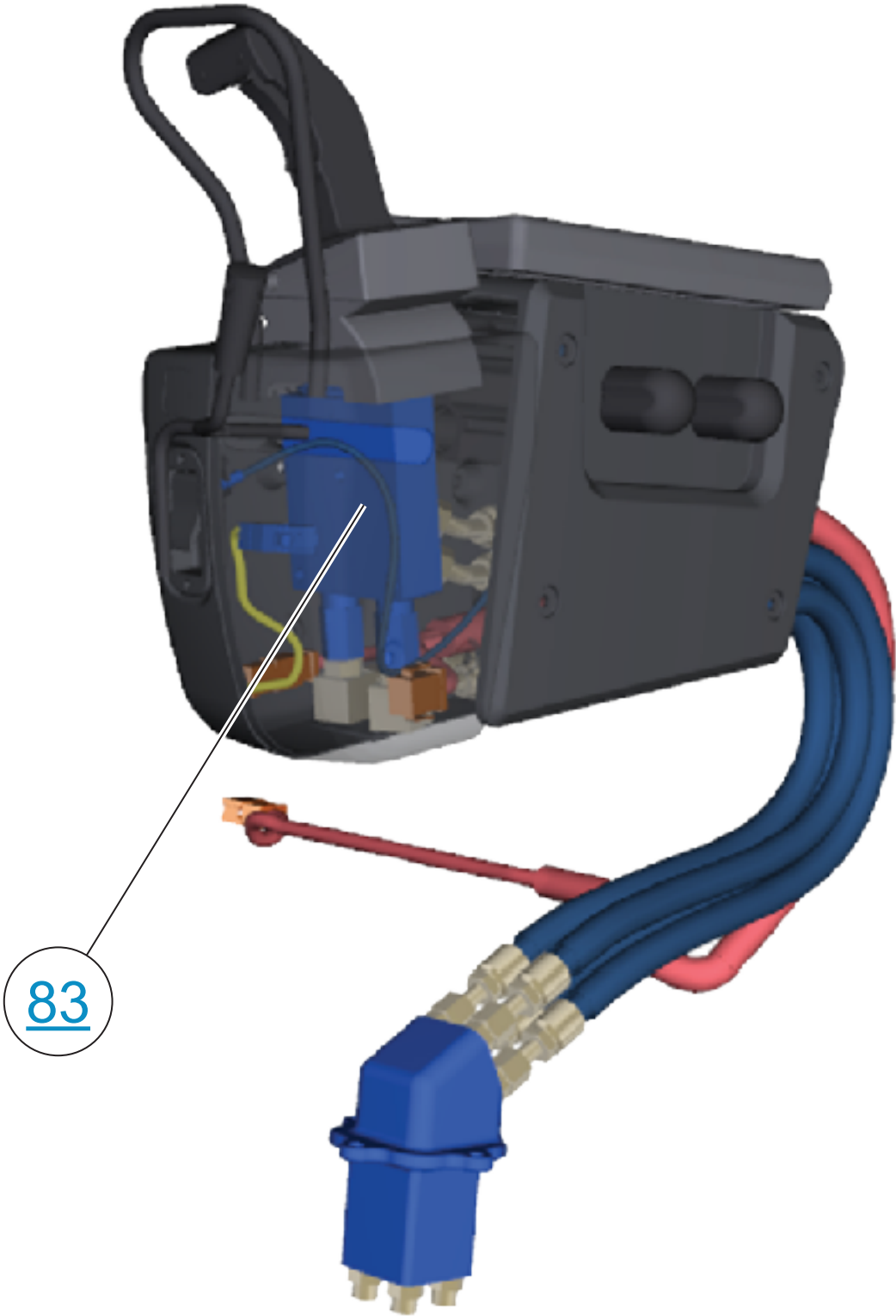


FRONT FRAME

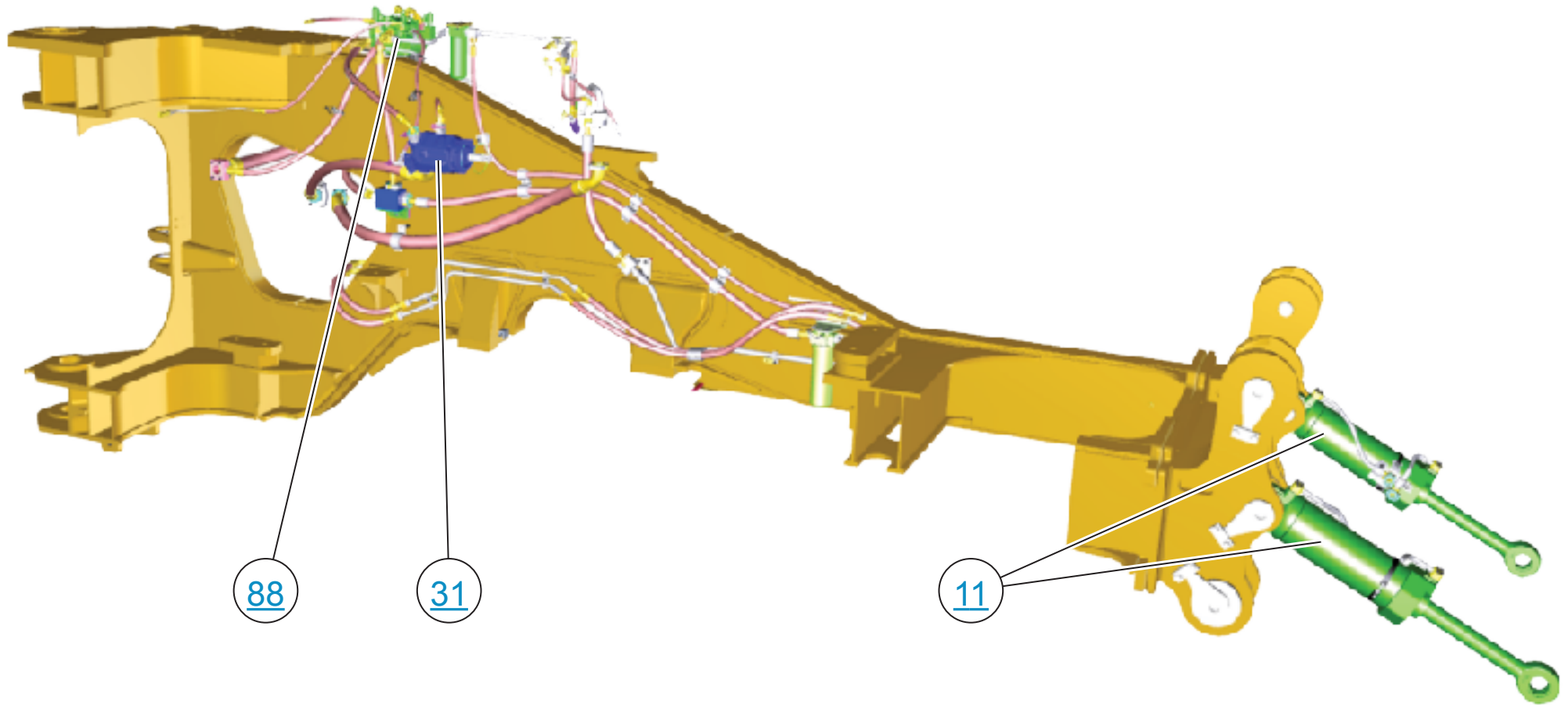


IMPLEMENT SYSTEM





RIPPER



STEERING SYSTEM

