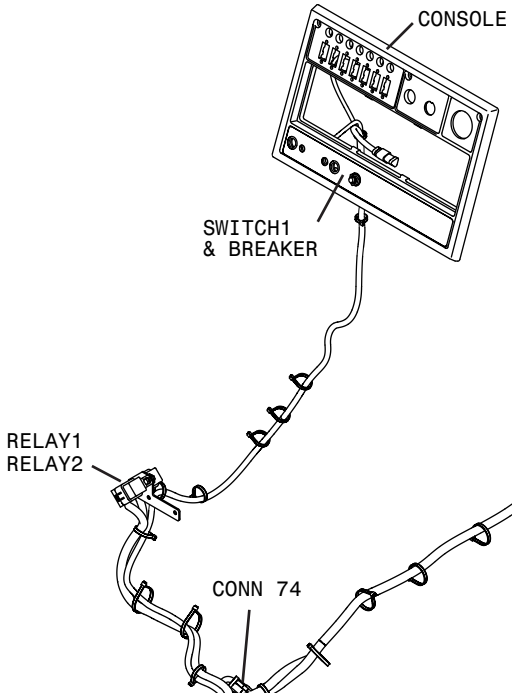
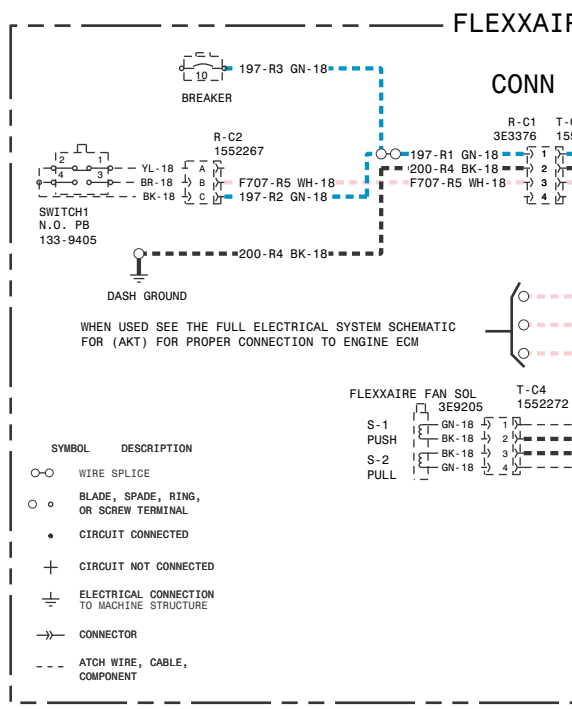
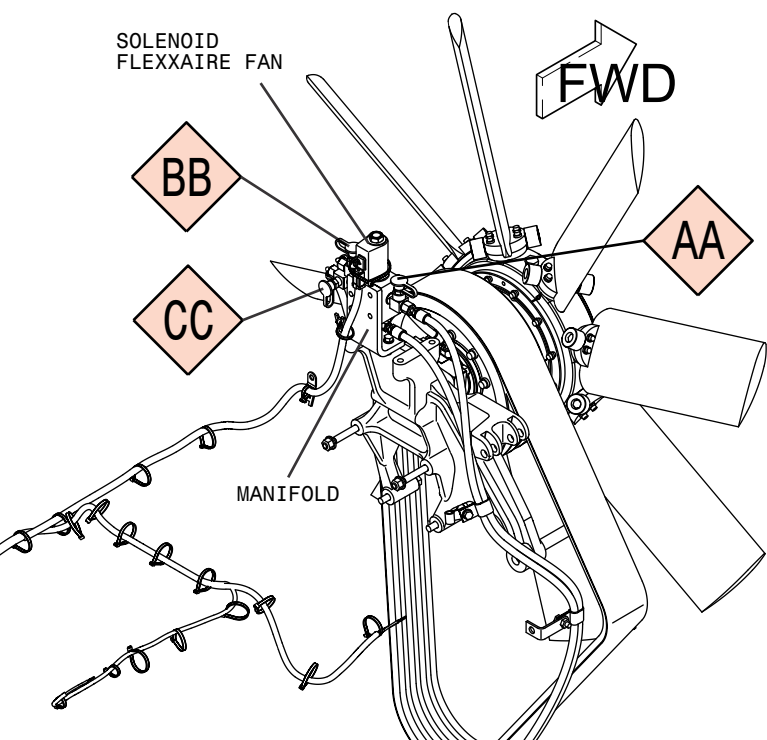


— |

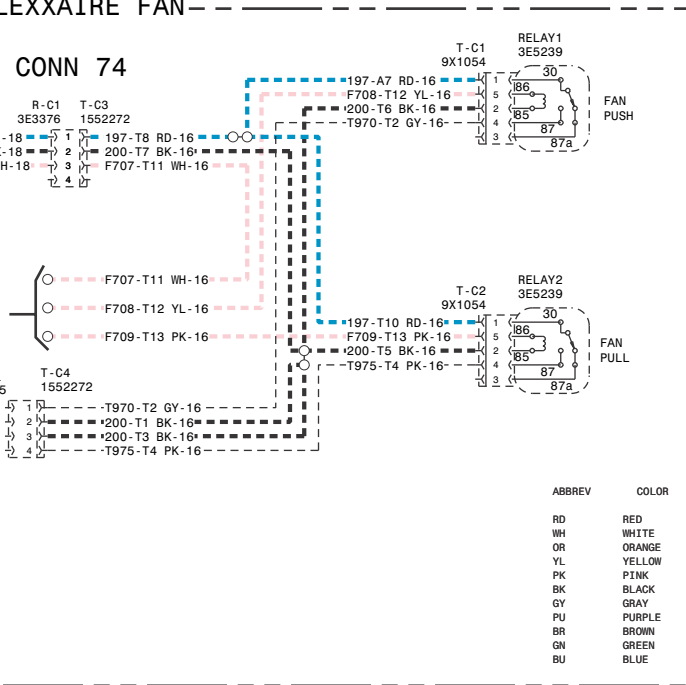




ELECTRI

FLEXXAIRE FAN

CONN 74



ELECTRICAL SCHEMATIC

ACTUATOR GP
(HUB ASSEMBLY)
FLEXXAIRE FAN
224-9398

Resistor, Sender and Solenoid	
Part No.	Component Description
3E-9205	Solenoid:

¹ At room temperature unless otherwise noted

Tap Location	
Pressure, Sample	
Tap Number	
AA	Flexxaire Fan
BB	Actuator "F"
CC	Actuator "F"

WIRE GROUP COLOR	
	WIRES THAT HAVE SYSTEM
	GROUND CIRCUIT.
	ENGINE CONTROL CIRCUIT

HYDRAULIC CIRCUIT COLOR	
	FLEXXAIRE FAN SOLENOID
	ACTUATOR (HUB) CONTROL
	DRAIN / RETURN LINE.

LINE	

Solenoid and Solenoid Specifications	
Component Description	Resistance (Ohms) ¹
Solenoid: Flexaire Fan	24.9 ± 0.4

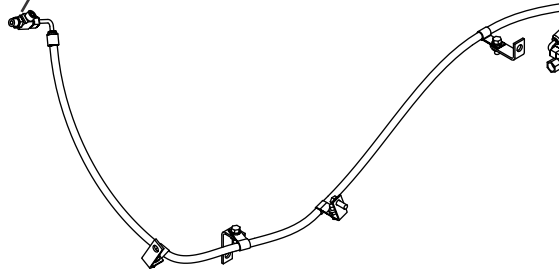
¹ otherwise noted.

Tap Locations Line, Sampling, and Sensor
Description
Flexaire Fan Solenoid Supply Pressure
Actuator "Push" Signal Pressure
Actuator "Pull" Signal Pressure

GROUP COLOR DESCRIPTIONS
ALL SYSTEM VOLTAGE WHEN THE KEY SWITCH IS ON.
CONTROL CIRCUIT.
TURN LINE.

GROUP COLOR DESCRIPTIONS
FAN SOLENOID SUPPLY CIRCUIT.
(HUB) CONTROL CIRCUIT.
TURN LINE.

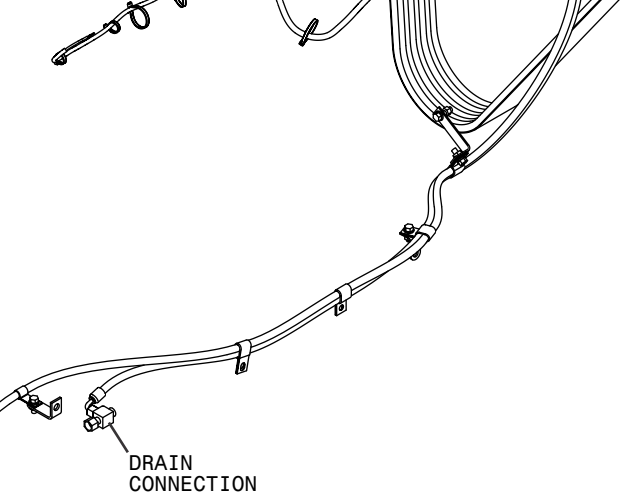
LINE PATTERNS
Pressure Line



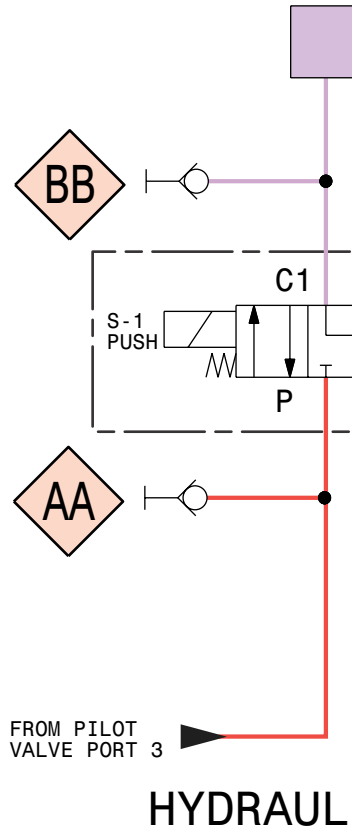
PILOT VALVE (P3)
CONNECTION

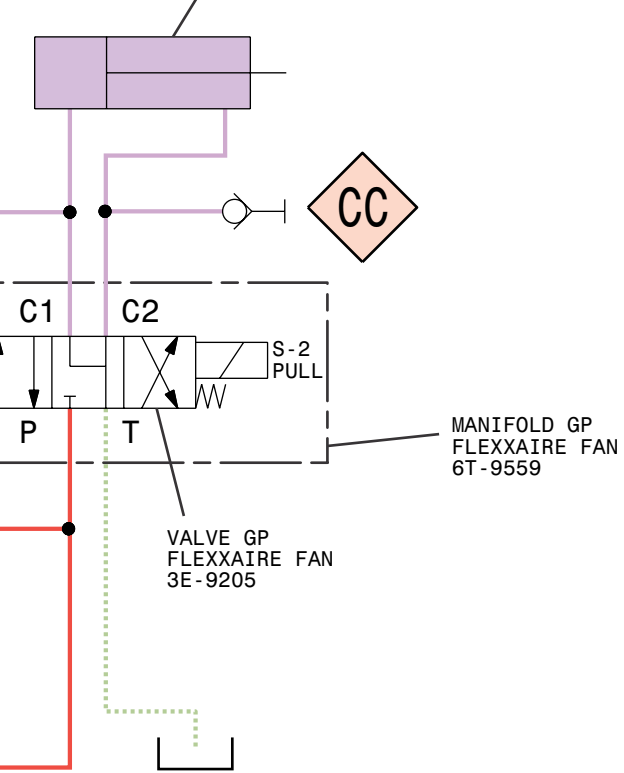
FLEXXAIRE FAN COMP





COMPONENT & TAP LOCATIONS





RAULIC SCHEMATIC

LINE	
—————	P
.....	P
.....	D
— — — — —	C
- - - - -	A
.....	A
CAL	
◇ YY	Ta
⊙ 52	Co

THIS SCHEMATIC IS FOR TH
 Components are shown installed on a fully
 off and transmission shifter in neutral.

ENR8125
 ge, Color 2, TRM

LINE PATTERNS	
—	Pressure Line
----	Pilot / Load Sensing Pressure
.....	Drain / Return Lines
—	Component Group
-	Attachment
- ·	Air Line
CALLOUTS	
	Taps (Pressure, Sampling ,Sensor) by letter
	Components by number

FOR THE D10R FLEXXAIRE FAN ATTACHMENT

d on a fully operable machine with the key and engine
 eutral.

—
|