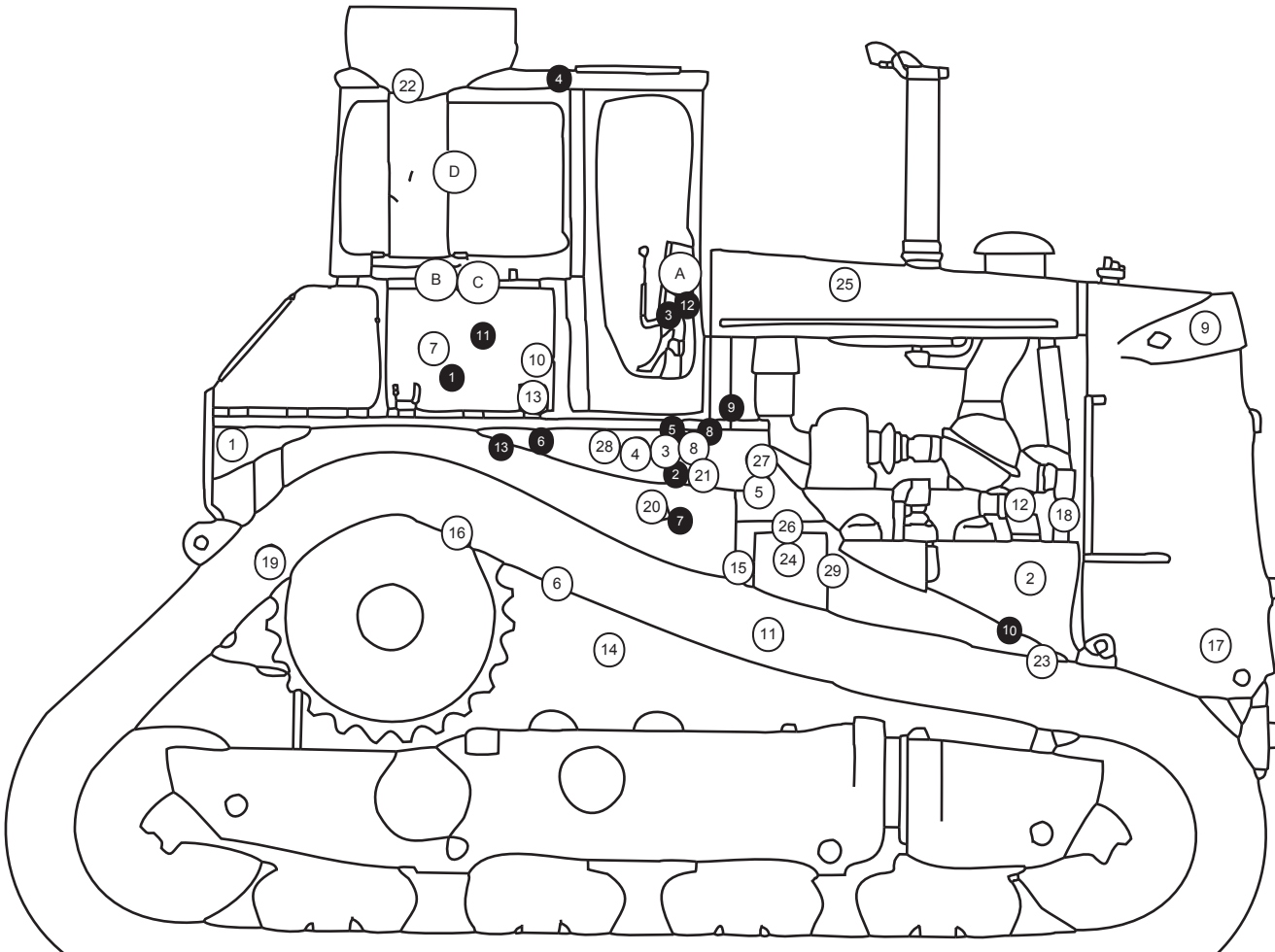
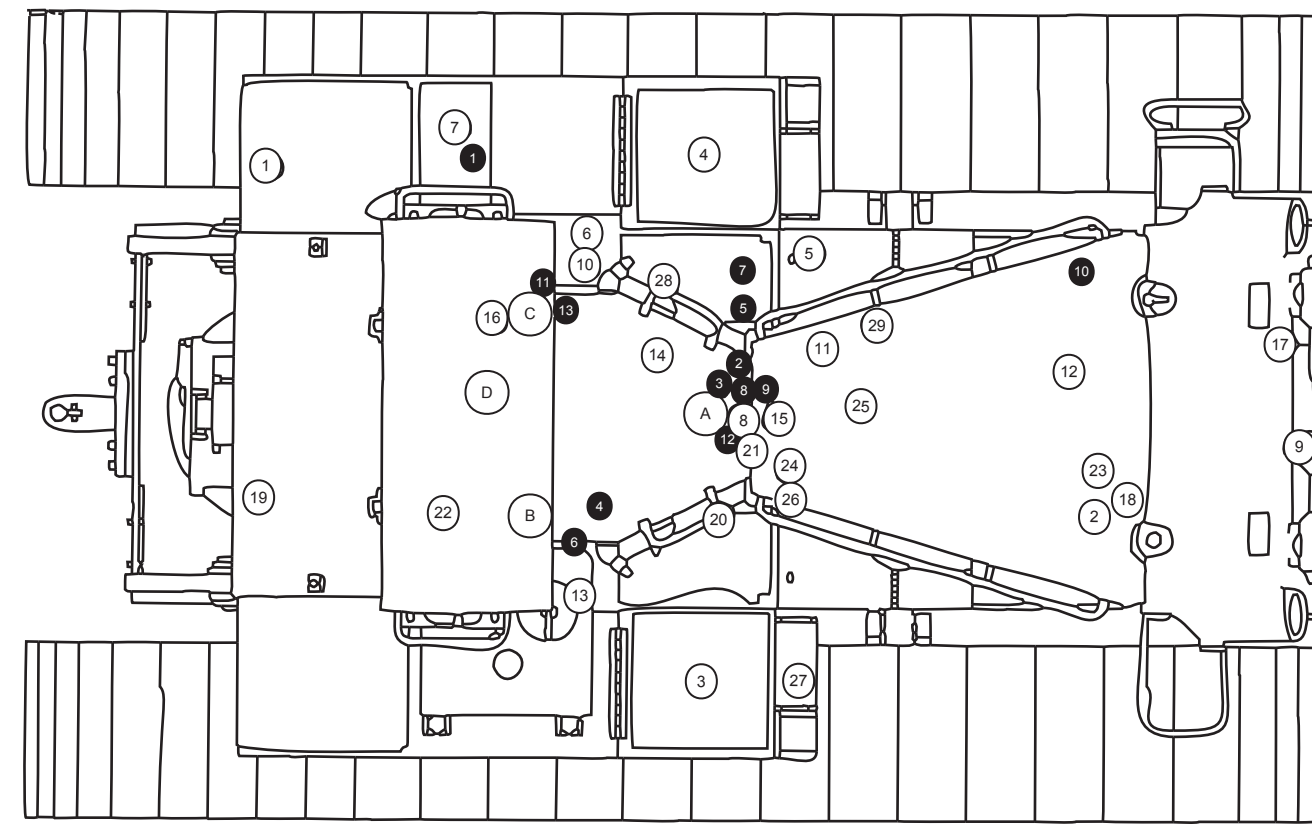


Harness Connector Location Chart			
Connectors	Vehicle Location	Harness And/Or Components	Schematic Location
30 Contacts	1	YY - 9N4539 Ether Control	F-12
25 Contacts	2	B - 6Y2905 D - 6Y4224	E-4
20 Contacts	3	D - 6Y4224 Diagnostic Connector	F-6
	4	E - 6Y2907 Operator Monitor (EMS)	F-5
	5	F - 6Y2907 Fire Suppression Control	B-3
15 Contacts	6	D - 6Y4224 H - 6Y0059	F-4
10 Contacts	7	P - 7T9222 Q - 7T9218	C-7
8 Contacts	8	A - 6T0856 B - 6Y2905	C-3
	9	CC - 8E3006 Overseped Monitor	E-6
	10	CC - 8E3006 Overseped Monitor	F-6
	11	P - 7T9222 Q - 7T9218	C-7
	12	A - 6T0856 U - 6T2185	A-7
	13	AAA - 9N4538 YY - 9N4539	C-4
7 Contacts	14	B - 6Y2905 H - 6Y0059	F-3
	15	E - 6Y2907 M - 7T5569	B-3
	16	M - 7T5569 Fire Suppression Monitor	E-7
	17	B - 6Y2905 E - 6Y2907	C-3
6 Contacts	18	E - 6Y2907 Fire Detection Switch	B-3
	19	E - 6Y2907 V - 7T5570	A-2
	20	V - 7T5570 Fire Detection Switch	C-2

Vehicle locations are repeated for connectors located close together.  
\* - Connector is located at the component.



VEHICLE HARNESS CONNECTOR AND COMPONENT LOCATIONS

# Schematic

## D11N Tractor Electrical System

74Z730-UP

Off Vehicle Switch Specifications				
Part No.	Function	Actuate	Deactuate	Normal Condition
3T9343	Power Train Filter Press (EMS)	210 ± 70kPa (30 ± 10 psi)	-	N.O.
6T4049	Engine Oil Press (EMS)	93 ± 21 kPa (13.5 ± 3.0 psi)	69 ± 21 kPa (10.0 ± 3.0 psi)	N.O.
6T0805	Nitrogen Actuator Press (Fire)	1650 ± 138kPa (239 ± 20.0 psi)	1650 ± 138kPa (240 ± 20.0 psi)	N.O.
7N4447	Fuel Filter Press (EMS)	119 ± 14kPa (17.0 ± 2.0 psi)	-	N.C.
7N6590	Power Train Oil Temp (EMS)	129.4 ± 2.8°C (265 ± 5°F)	118.3°C MIN (245°F MIN)	N.C.
7N6785	Engine Coolant Temp (EMS)	107.2 ± 2.8°C (225 ± 5°F)	91.0°C MIN (196°F MIN)	N.C.
7T4371	Discharge Press (Fire)	93 ± 21 kPa (13.5 ± 3.0 psi)	69 ± 21 kPa (10.0 ± 3.0 psi)	N.O.
7T4785	Fire Detection Temp	153.3 ± 8°C (300 ± 15°F)	-	N.O.
8C5436	Agent Press (Fire)	2270 kPa MAX (330 psi MAX)	1650 ± 138kPa (240 ± 20 psi)	N.O.
9C1300	Hydraulic Temp (EMS)	116.0 ± 2.2°C (230 ± 5°F)	107.0°C MIN (215°F MIN)	N.C.
9C3341	Power Train Filter Temp (EMS)	51.7 ± 2.8°C (125 ± 5°F)	43.0°C MIN (110°F MIN)	N.C.
9X3040	Engine Coolant Flow (EMS)	362 ± 29 mm (45.6 mm ID point) (1.3 ± 1.1 in 1.8 in ID point)	303 mm MIN (11.0 in MIN)	N.O.
9X4276	Fuel Press (EMS)	610 ± 20.8 kPa (14.0 ± 3.0 psi)	610 ± 20.8 kPa (10.0 ± 3.0 psi)	N.O.

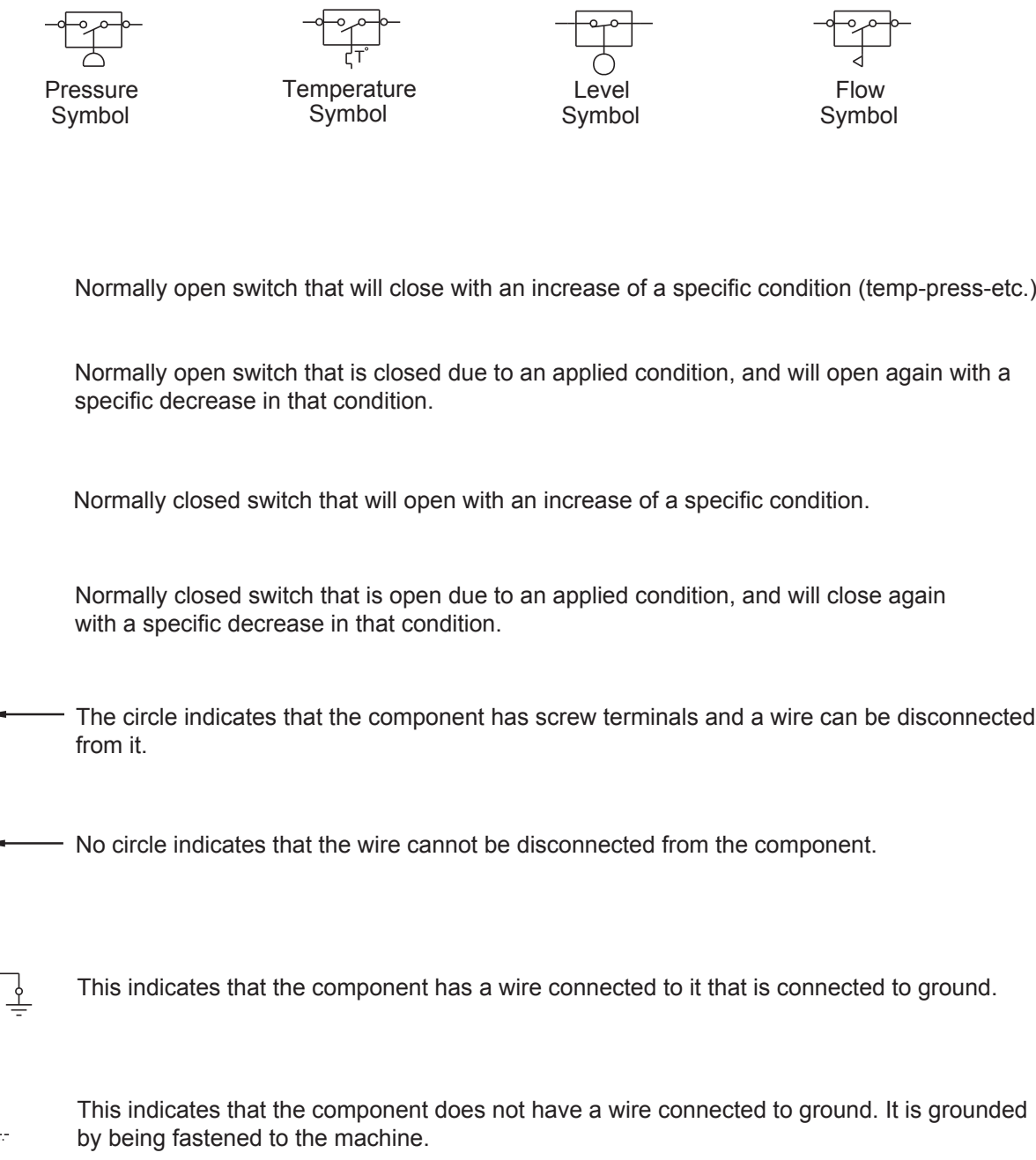
Wire Description Chart					
Wire Number	Wire Color	Description	Description		
<b>Power Distribution Circuits</b>					
701	RD	BATTERY	500	BR	WIPER - FRONT (PARK)
102	BU	HEAD LAMP	501	GN	WIPER - FRONT (HI)
105	KE	KEY SW	502	GN	WIPER - REAR (PARK)
107	WH	ENGINE SHUT-DOWN/AUTO FIRE SUPPR CONT	503	BR	WIPER - REAR (HI)
108	BU	AUX CKT	504	YL	WIPER - REAR (LO)
109	OR	ALTERNATOR OUTPUT (+) TERM.	505	BU	WIPER - REAR (HI)
112	PU	MAIN POWER RELAY OUTPUT	510	YL	WASHER - PRIMER
113	OR	OPR MON PANELS W/MS IS SWITCHED	513	OR	A/C COMPRESSOR/REFRIGERANT PRESS. SW
114	GN	WARNING HORN (FORWARD)	515	GY	SWITCH - Accessory
116	BR	AUX CKT	516	GN	BLOWER MOTOR (MEDIUM)
121	YL	BACKUP ALARM LAMP	517	BU	BLOWER MOTOR (LO)
123	WH	AUX CKT	521	YL	A/C SW TO REFRIGERANT SW
124	GN	A/C	522	WH	A/C CLUTCH TO THERMOSTAT SW
145	GY	AUX CKT	523	BR	WIPER - LEFT (PARK)
174	PK	AUX CKT	524	BU	WIPER - LEFT (LO)
177	OR	MAIN SWR	525	GY	WIPER - LEFT (HI)
184	BU	AUX CKT	526	YL	WIPER - RIGHT (PARK)
			527	GN	WIPER - RIGHT (LO)
			528	PK	WIPER - RIGHT (HI)
200	BK	MAIN CRUISE	533	OR	FIRE SUPPR HEAT SENSOR/TEST SW
201	BK	OPR MON PANELS W/MS COMS	534	WH	FIRE SUPPR HEAT SENSOR/TEST SW
203	BK	CHASSIS DIAGNOSTIC	553	YL	PITCH SOL TO TRIGGER SW - DUAL TILT
207	BK	STARTER DIAGNOSTIC	554	PK	MOMENTARY SW TO SINGLE TILT SOL - DUAL TILT
209	BK	FIRE SUPR SYSTEM GROUND			
237	BK	KBI ETHER CONT GROUND			
245	BK	ETHER CONT HARNESS CODE 0			
246	BK	ETHER CONT HARNESS CODE 1			
247	BK	ETHER CONT HARNESS CODE 2			
248	BK	ETHER CONT HARNESS CODE 3			
<b>Basic Machine Circuits</b>					
301	BU	STARTER NO. 1 SOL	600	BR	DASH LAMP BASIC
302	OR	STARTER NO. 1 RESISTOR TO DIAGNOSTIC	606	GN	FLOOD LAMP - REAR
304	WH	STARTER RELAY NO. 1 OUTPUT	609	YL	FLOOD LAMP - SIDE
306	GN	STARTER RELAY COIL TO NEUT START SW OR KEY SW	610	OR	HEAD LAMP BASIC
307	OR	KEY SW TO NEUT START SW OR VMS SENSOR MODULE	633	BU	ATTACH LIGHTING CKT
308	YL	MAIN POWER RELAY COIL			
310	PU	START AID SW TO START AID SOL			
311	WH	START AID SOL TO TEMP SW	779	WH	COUPLER ENGAGE SOL
312	PK	STARTER NO. 2 SOL TO RESISTOR	780	PU	COUPLER DISENGAGE SOL
313	GY	STARTER NO. 2 RESISTOR TO DIAGNOSTIC	781	YL	ENG SPEED (H)
314	PU	STARTER RELAY NO. 2 OUTPUT	803	BU	AUTO FIRE SUPPR SYSTEM SW POWER
321	BR	BACKUP ALARM/AMPTRAVEL ALARM	805	PK	AUTO FIRE SUPPR BRAKE SW
322	GY	WARNING HORN (FORWARD)	807	BR	AUTO FIRE SUPPR NITROGEN SW TO CONT
326	PK	SHUTDOWN SOL	808	PU	AUTO FIRE SUPPR NITROGEN SW TO NITROGEN SW
327	GY	SHUTDOWN SOL	809	GN	AUTO FIRE SUPPR SYSTEM WARNING CKT
328	OR	SHUTDOWN MODULE "OFF"	810	BU	AUTO FIRE SUPPR SYSTEM FAILURE CKT
334	BU	START AID SOL #2	811	GY	AUTO FIRE SUPPR TEST CKT
			812	GN	AUTO FIRE SUPPR NITROGEN ACTUATOR SW
			813	PK	AUTO FIRE SUPPR AGENT CYLINDER SW TO NITROGEN SW
			814	YL	AUTO FIRE SUPPR AGENT SW TO AGENT SW
			816	BR	AUTO FIRE SUPPR ALARM
			817	OR	ENG OVERSPEED TEST SW
			819	GN	START AID SENSOR SUPPLY
			820	OR	START AID SENSOR SIGNAL
			822	WH	START AID LAMP RESET SW #1
			823	YL	START AID LAMP RESET SW #2
			841	GY	START AID CONT SOL. 1 & 2 RET
			843	PK	START AID LAMP OUTPUT
			844	PU	START AID CO NT ALARM OUTPUT
			845	WH	START AID CONT SENSOR 1
			846	YL	START AID CONT SENSOR 2
			848	BR	START AID CONT SENSOR 4
			854	YL	START AID CONT TEST SW INPUT
			858	BR	START AID CONT LAMP 2 OUTPUT
<b>Monitoring Circuits</b>					
403	GN	ALTERNATOR (RT) TERM.			
404	YL	OPR MON HYD OIL TEMP			
405	GY	OPR MON OIL PRESS. (LO SETTING)			
406	PU	OPR MON COOLANT TEMP			
410	WH	OPR MON FAULT ALARM			
411	PK	OPR MON MASTER FAULT LAMP			
412	BU	OPR MON COOLANT FLOW			
413	BR	OPR MON FUEL PRESS.			
415	GN	OPR MON TEST SW			
418	WH	OPR MON OIL PRESS. (HI SETTING)			
420	OR	OPR MON FUEL FILTER/LO ACCUM PRESS.			
424	GY	OPR MON POWER TRAIN TEMP			
426	BR	OPR MON POWER TRAIN OIL FILTER			
427	GN	OPR MON POWER TRAIN OIL FILTER JUMPER			
441	OR	ENG COOLANT TEMP GAUGE			
442	GY	HYD SYSTEM TEMP GAUGE			
443	YL	POWER TRAIN TEMP GAUGE			

Vehicle locations are repeated for components located close together.  
A = Components in operator compartment - Front dash  
B = Components in operator compartment - Right console  
C = Components in operator compartment - Left console  
D = Components in operator compartment.

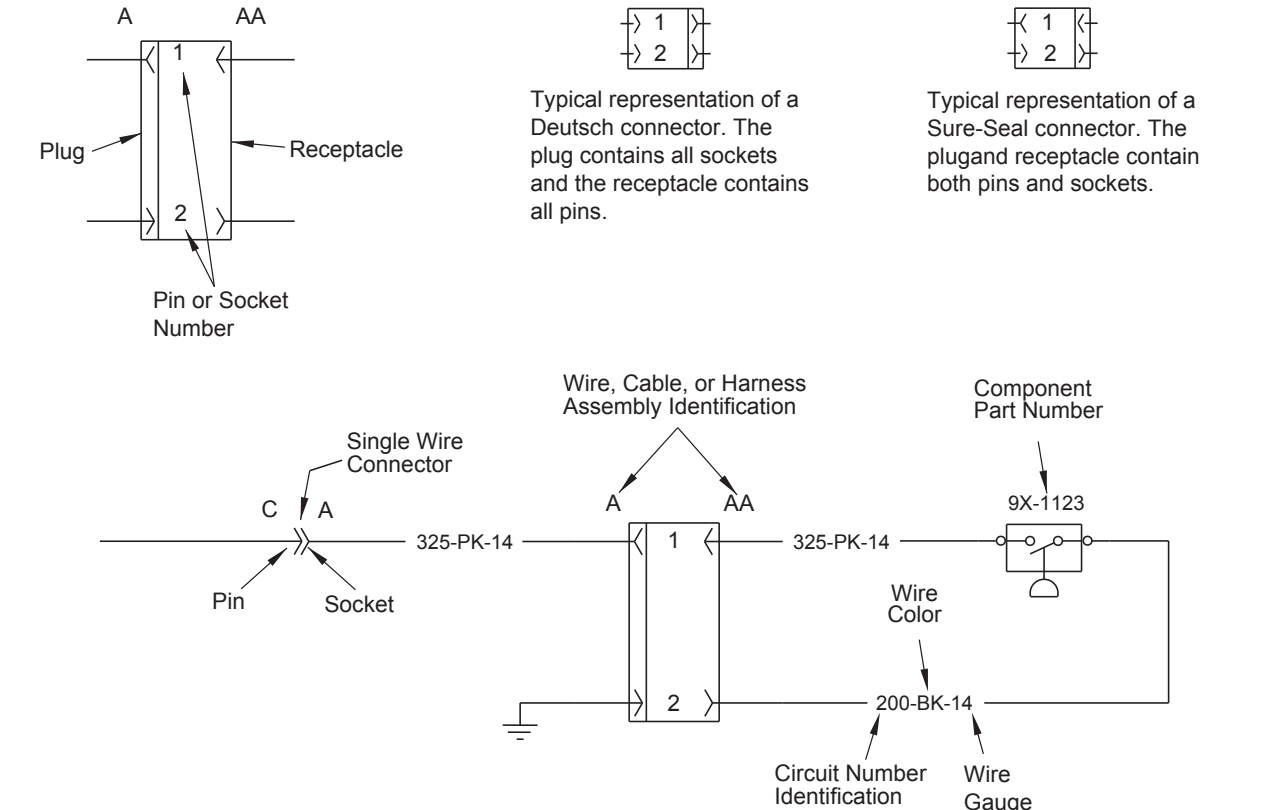
Component Location Chart					
Vehicle Location	Component	Schematic Location	Vehicle Location	Component	Schematic Location
1	Alarm - Backup	E-9	17	Solenoid - Dual Tilt	F-1
B	Alarm - Ether Out	D-9	18	Solenoid - Engine Shutdown	A-1
B	Alarm - Ether (EMS)	C-9	7	Solenoid - Ether 2	D-11
2	Alternator	A-1	B	Solenoid - Nitrogen Actuator (Fire)	C-9
3	Batteries	A-3	19	Solenoid - Ripper Pin Puller	A-9
4	Batteries	F-3	B	Switch - Accessory	D-8
5	Breaker - Accessory (60 Amp)	D-3	20	Switch - Agent Press (Fire)	A-5
5	Breaker - Alternator (60 Amp)	D-3	20	Switch - Agent Press (Fire)	A-5
A	Breaker - Blower (15 Amp)	C-6	C	Switch - Backup Alarm	E-8
A	Breaker - Fine Supp (15 Amp)	C-6	C	Switch - Blower	E-8
A	Breaker - Key (10 Amp)	B-6	C	Switch - Brake	E-8
5	Breaker - Main (60 Amp)	D-3	21	Switch - Discharge Press (Fire)	B-2
A	Breaker - Running Lamp (15 Amp)	C-6	6	Switch - Disconnect	F-3
6	Bus Bar	F-2	22	Switch - Dome Lamp	B-8
7	Control - Ether	F-12	B	Switch - Dual Tilt	D-6
8	Control - Fire Suppression	B-3	23	Switch - Engine Coolant Flow (EMS)	A-1
B	Converter	D-8	11	Switch - Engine Coolant Temp (EMS)	E-1
A	Gauge - Engine Coolant Temp	B-5	24	Switch - Engine Oil Press (EMS)	A-2
A	Gauge - Hydraulic Oil Temp	B-5	A	Switch - Engine Overspeed Test	C-5
A	Gauge - Power Train Temp	B-5	7	Switch - Ether Bottle 1 Reset	F-10
9	Horn - Forward	E-1	7	Switch - Ether Bottle 2 Reset	F-10
A	Lamp - Engine Overspeed Warning	C-5	21	Switch - Fire Detection Temp	B-2
A	Lamp - Master Fault Lamp	D-6	25	Switch - Fire Detection Temp	C-2
A	Lamp - Ether Out	C-6	B	Switch - Forward Horn	C-8
A	Meter - Service	B-5	22	Switch - Front Wiper	C-8
A	Monitor - Fire Suppression	E-7	26	Switch - Fuel Filter Press (EMS)	B-2
A	Monitor - Operator (EMS)	F-5	26	Switch - Fuel Press (EMS)	A-2
8	Monitor - Overseped	E-6	12	Switch - Hydraulic Temp (EMS)	A-8
10	Motor - Blower	F-7	A	Switch - Key	B-8
10	Motor - Blower	F-8	22	Switch - Left Wiper	C-6
D	Motor - Front Wiper	D-7	C	Switch - Neutral Start	E-8
D	Motor - Left Wiper	F-7	27	Switch - Nitrogen Actuator Press (Fire)	A-3
D	Motor - Rear Wiper	D-9	B	Switch - Nitrogen Actuator Press (Fire)	C-9
D	Motor - Right Wiper	B-6	A	Switch - Operator Monitor Test	D-6
D	Motor - Washer Pump	F-9	28	Switch - Power Train Filter Press (EMS)	F-6
11	Motors - Starting	F-2	28	Switch - Power Train Filter Press (EMS)	F-6
5	Receptacle - Auxiliary Start	F-2	13	Switch - Power Train Filter Temp (EMS)	B-2
A	Relay - Main	B-4	B	Switch - Power Train Temp (EMS)	B-2
A	Relays - Start	B-4	A	Switch - Rear Flood Lamp	D-6
10	Resistor - Blower Speed	F-8	22	Switch - Rear Wiper	C-8
11	Resistors - Starter/Diagnostic Conn	F-2	29	Switch - Refrigerant Press (AC)	F-2
12	Sender - Engine Coolant Temp (Gauge)	E-1	22	Switch - Right Wiper	C-6
13	Sender - Hydraulic Temp (Gauge)	A-8	B	Switch - Ripper Pin Puller	C-8
14	Sender - Power Train Temp (Gauge)	C-2	A	Switch - Running Lamp	E-6
12	Sensor - Engine Coolant Temp (Ether)	D-1	A	Switch - Side Flood Lamp	D-6
15	Sensor - Engine Overspeed	D-1	A	Switch - Start Aid	B-1
15	Sensor - Engine Speed (Ether)	D-1	C	Switch - Thermostat	F-7
16	Solenoid - Air Conditioner Clutch	F-8			

Vehicle locations are repeated for components located close together.  
A = Components in operator compartment - Front dash  
B = Components in operator compartment - Right console  
C = Components in operator compartment - Left console  
D = Components in operator compartment.

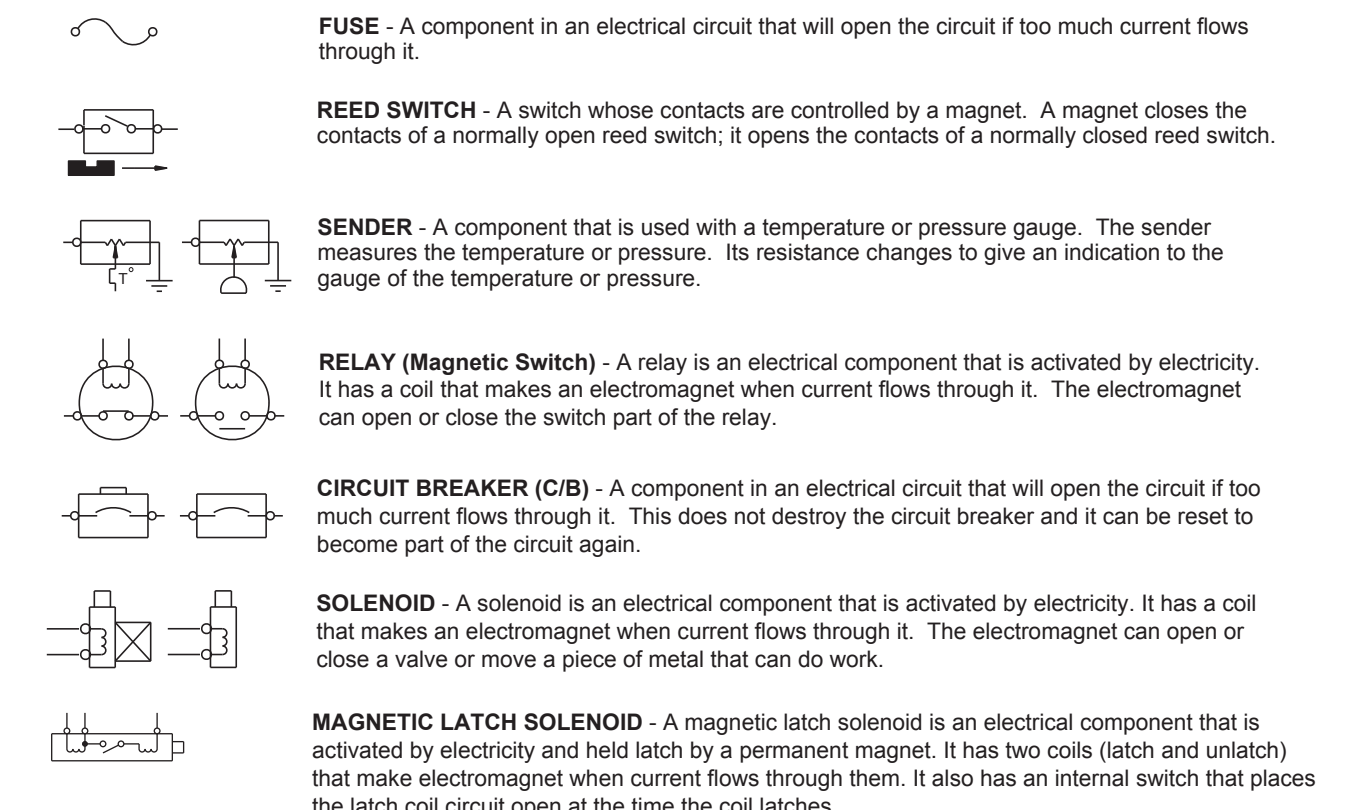
### Electrical Schematic Symbols And Definitions



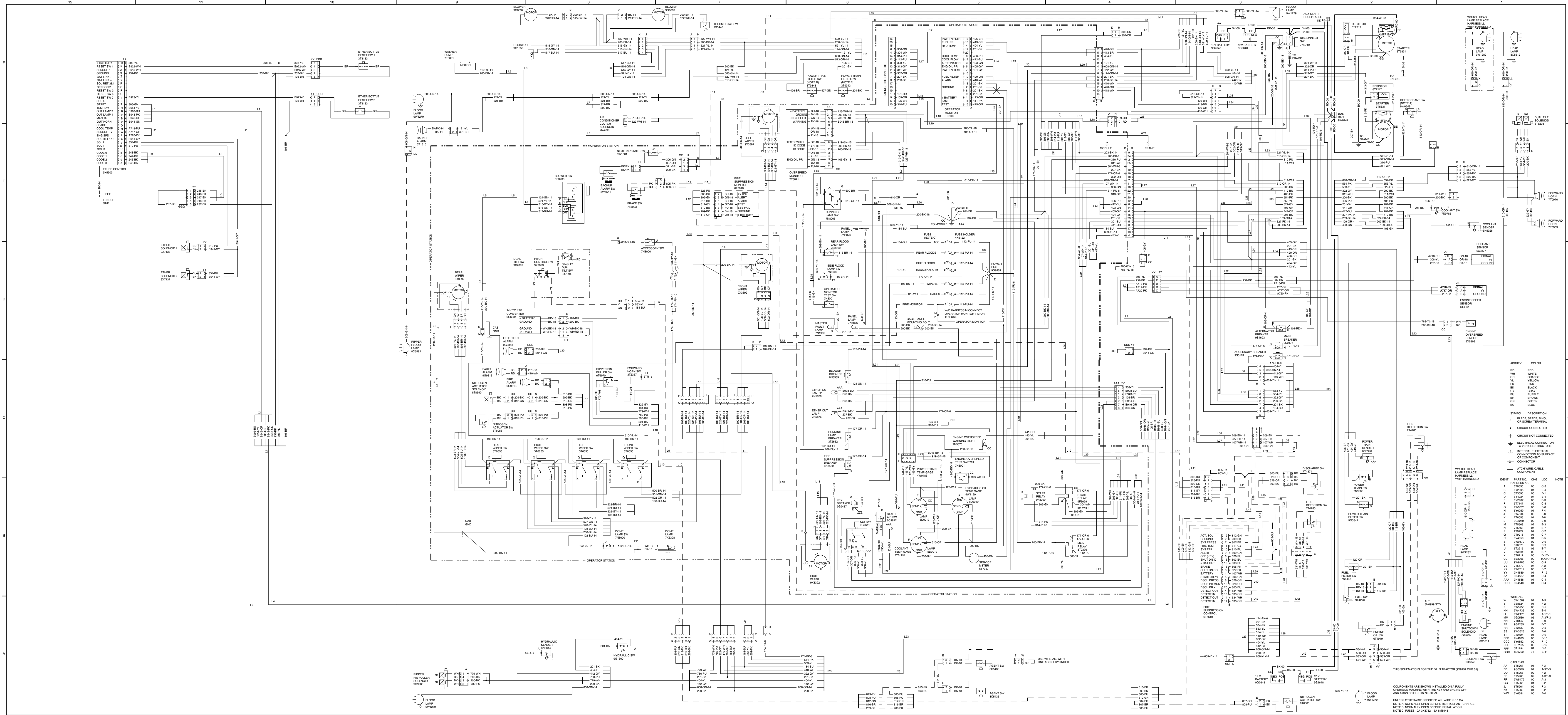
### Harness And Wire Electrical Schematic Symbols



### Electrical Schematic Symbols And Definitions



MAGNETIC LATCH SOLENOID - A magnetic latch solenoid is an electrical component that is activated by electricity and held latch by a permanent magnet. It has two coils (latch and unlatch) that make electromagnet when current flows through them. It also has an internal switch that places the latch coil circuit open at the time the coil latches.



ASSEMBY	COLOR	REMARKS
RE	RED	RED
WH	WHITE	WHITE
OR	ORANGE	ORANGE
YL	YELLOW	YELLOW
PK	PALE	PALE
GY	GRAY	GRAY
BR	BROWN	BROWN
GR	GREEN	GREEN
BL	BLUE	BLUE

SYMBOL	DESCRIPTION
○	BLACK SPACE BRAG
○	OR SCREW TERMINAL
+	CIRCUIT NOT CONNECTED
+	ELECTRICAL CONNECTION TO INSOLE STRUCTURE
+	INTERNAL ELECTRICAL CONNECTION TO SURFACE OF COMPONENT
+	CONNECTOR
+	WIRING CABLE COMPONENT

IDENT	PART NO.	QTY	LOC	NOTE
A	47098	01	C-3	
B	47098	04	E-4	
D	37398	01	E-1	
E	47024	04	E-4	
F	37747	02	C-5	
G	47024	04	E-4	
H	47024	01	F-2	
J	47024	01	F-2	
K	75055	01	F-8	
L	47024	01	F-2	
M	75058	01	B-7	
N	75058	01	B-7	
O	47024	01	F-2	
P	47024	01	F-2	
Q	47024	01	F-2	
R	47024	01	F-2	
S	990179	02	D-8	
T	23237	01	D-9	
V	990179	02	B-7	
W	990179	01	B-7	
XX	47024	01	F-2	
YY	47024	01	F-2	
ZZ	990179	01	D-4	
AAA	990179	01	D-4	
DDD	990179	01	D-4	

CABLE AS	IDENT	QTY	LOC	NOTE
AA	47024	01	F-3	
BB	47024	01	F-3	
CC	47024	01	F-3	
DD	47024	01	F-3	
EE	47024	01	F-3	
FF	47024	01	F-3	
GG	47024	01	F-3	
HH	47024	01	F-3	
II	47024	01	F-3	
JJ	47024	01	F-3	
KK	47024	01	F-3	
LL	47024	01	F-3	
MM	47024	01	F-3	
NN	47024	01	F-3	
OO	47024	01	F-3	
PP	47024	01	F-3	
QQ	47024	01	F-3	
RR	47024	01	F-3	
SS	47024	01	F-3	
TT	47024	01	F-3	
UU	47024	01	F-3	
VV	47024	01	F-3	
WW	47024	01	F-3	

THIS SCHEMATIC IS FOR THE D11N TRACTOR (30000 CHG 01)

COMPONENTS ARE SHOWN INSTALLED ON A FULLY OPTIMIZED MACHINE WITH THE KEY AND ENGINE OFF.

UNLESS OTHERWISE SPECIFIED ALL WIRE IS 18 GA.

NOTE A: NORMALLY OPEN BEFORE REFRIGERANT CHARGE.

NOTE B: NORMALLY OPEN BEFORE INSTALLATION.

NOTE C: FUSE 10A-30A/7E 15A-80A/30E