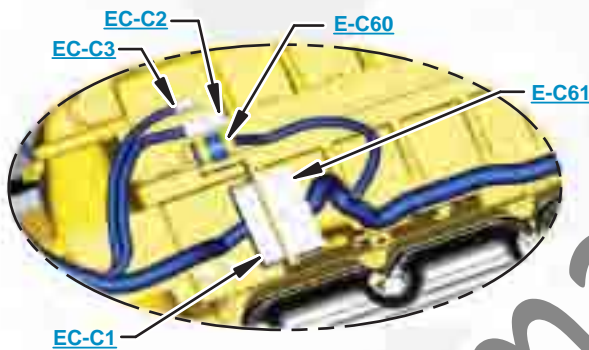


***This document is best viewed at a screen resolution of 1024 X 768.***

To set your screen resolution do the following:  
**RIGHT CLICK** on the **DESKTOP**.  
 Select **PROPERTIES**.  
**CLICK** the **SETTINGS TAB**.  
**MOVE THE SLIDER** under **SCREEN RESOLUTION** until it shows **1024 X 768**.  
**CLICK OK** to apply the resolution.

The Bookmarks panel will allow you to quickly navigate to points of interest.



Click on any text that is BLUE and underlined. These are hyperlinks that can be used to navigate the schematic and machine views.

**VIEW ALL CALLOUTS**

When only one callout is showing on a machine view this button will make all of the callouts visible. This button is located in the top right corner of every machine view page.

HOTKEYS (Keyboard Shortcuts)		
	FUNCTION	KEYS
	Zoom In	"CTRL" / "+"
	Zoom Out	"CTRL" / "-"
	Fit to Page	"CTRL" / "0" (zero)
	Hand Tool	"SPACEBAR" (hold down)
	Find	"CTRL" / "F"



# Schematic

---

## D11T Track-Type Tractor Cooling System

---

AMA1-UP  
MDG1-UP  
JEL1-UP  
JNS1-UP

SchematicCat.com

**Including Carry Dozer**

---

# COMPONENT LOCATION



Description	Part Number	Machine Location	Schematic Location
Cab-Heater	329-0315	<a href="#">1</a>	<a href="#">E-2</a>
Cooler - Engine Oil	358-2305	<a href="#">2</a>	<a href="#">B-3</a>
Cooler - LH NRS	363-3433	<a href="#">3</a>	<a href="#">A-6</a>
Cooler - RH NRS	363-3436	<a href="#">4</a>	<a href="#">A-5</a>
Cooler - XMSN OIL	312-3464	<a href="#">5</a>	<a href="#">B-3</a>
Pump Gp - Jacket Water	348-4037	<a href="#">6</a>	<a href="#">D-3</a>
Radiator Core (X2)	338-2217	<a href="#">7</a>	<a href="#">E-6, E-4</a>
Tank	335-5463	<a href="#">8</a>	<a href="#">F-5</a>
Temp Sensor - Thermostat	256-6453	<a href="#">9</a>	<a href="#">C-6</a>
Turbo (LH)	360-1240	<a href="#">10</a>	<a href="#">B-7</a>
Turbo (RH)	360-1241	<a href="#">11</a>	<a href="#">B-4</a>

SchematicCat.com

# TAP LOCATION



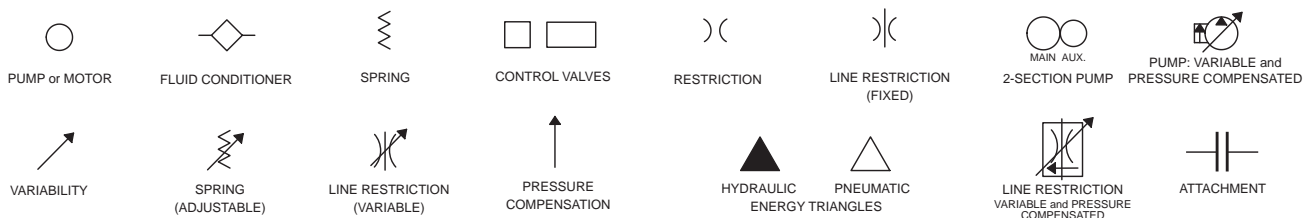
Tap Number	Description	Schematic Location
<a href="#">SOS</a>	Engine Coolant Sampling Port	<a href="#">C-4</a>

SchematicCat.com

# FLUID POWER SYMBOLS



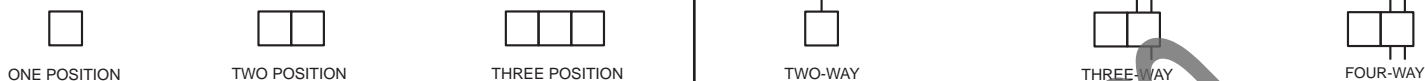
## BASIC COMPONENT SYMBOLS



## VALVE ENVELOPES

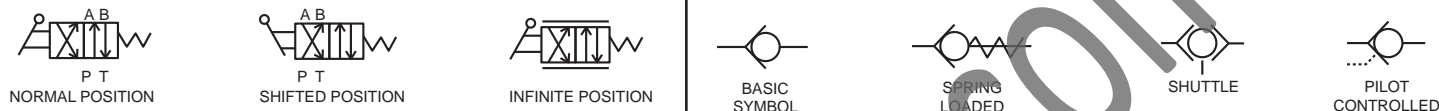
## VALVES

## VALVE PORTS



## CONTROL VALVES

## CHECK VALVES



## FLUID STORAGE RESERVOIRS



## MEASUREMENT

## ROTATING SHAFTS



## COMBINATION CONTROLS



## MANUAL CONTROL SYMBOLS



## RELEASED PRESSURE

## PILOT CONTROL SYMBOLS

## REMOTE SUPPLY PRESSURE



## ACCUMULATORS

## CROSSING AND JOINING LINES

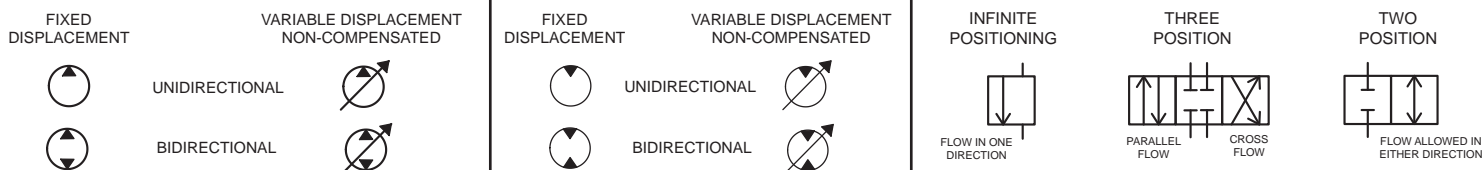
## HYDRAULIC AND PNEUMATIC CYLINDERS



## HYDRAULIC PUMPS

## HYDRAULIC MOTORS

## INTERNAL PASSAGEWAYS



# ELECTRICAL SYMBOLS



## Hydraulic Symbols (Electrical)



Transducer  
(Fluid)



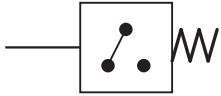
Transducer  
(Gas / Air)



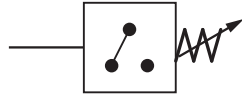
Generator



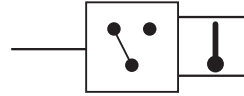
Electric Motor



Pressure Switch



Pressure Switch  
(Adjustable)

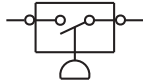


Temperature Switch

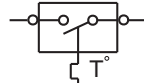


Electrical Wire

## Electrical Symbols (Electrical)



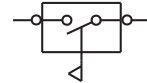
Pressure  
Symbol



Temperature  
Symbol



Level  
Symbol

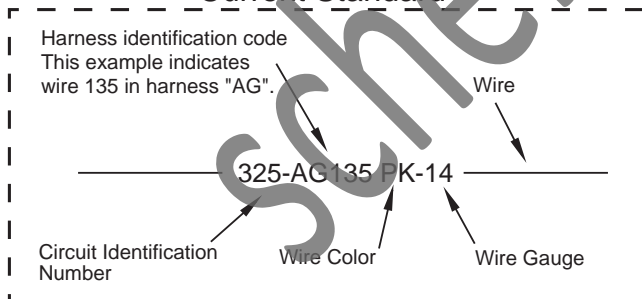


Flow  
Symbol

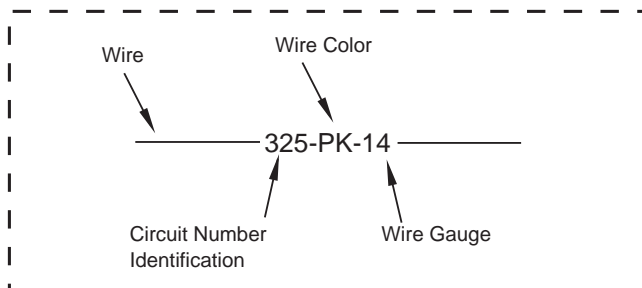
## Wire Number Identification Codes

### Electrical Schematic Example

#### Current Standard

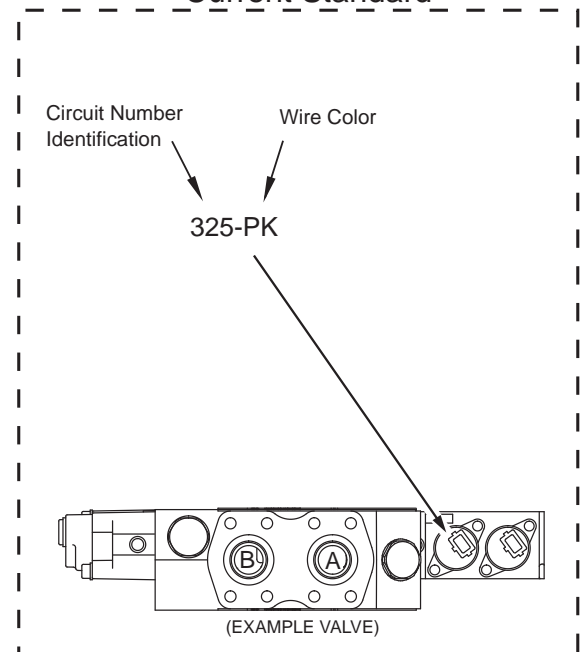


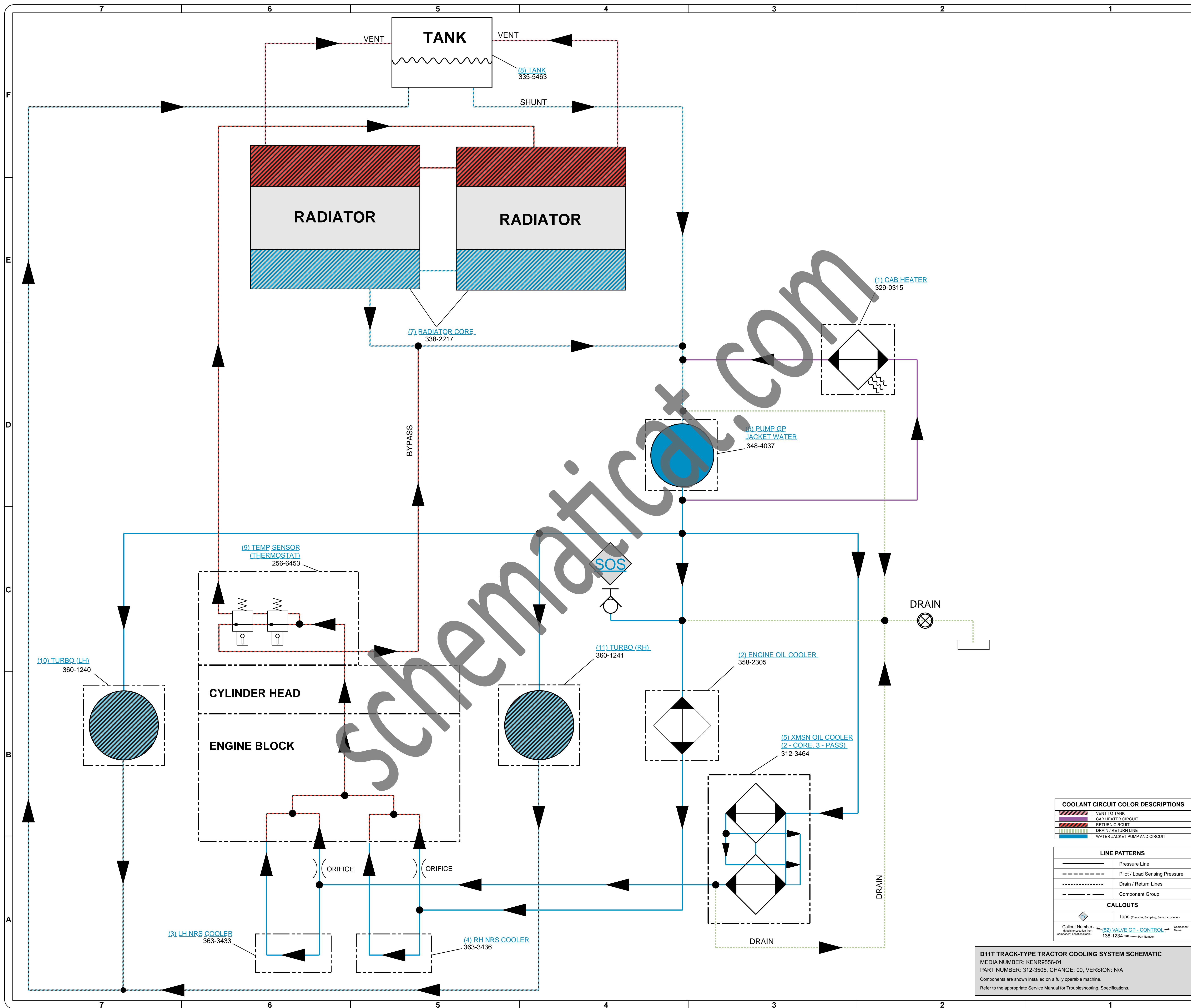
#### Previous Standard



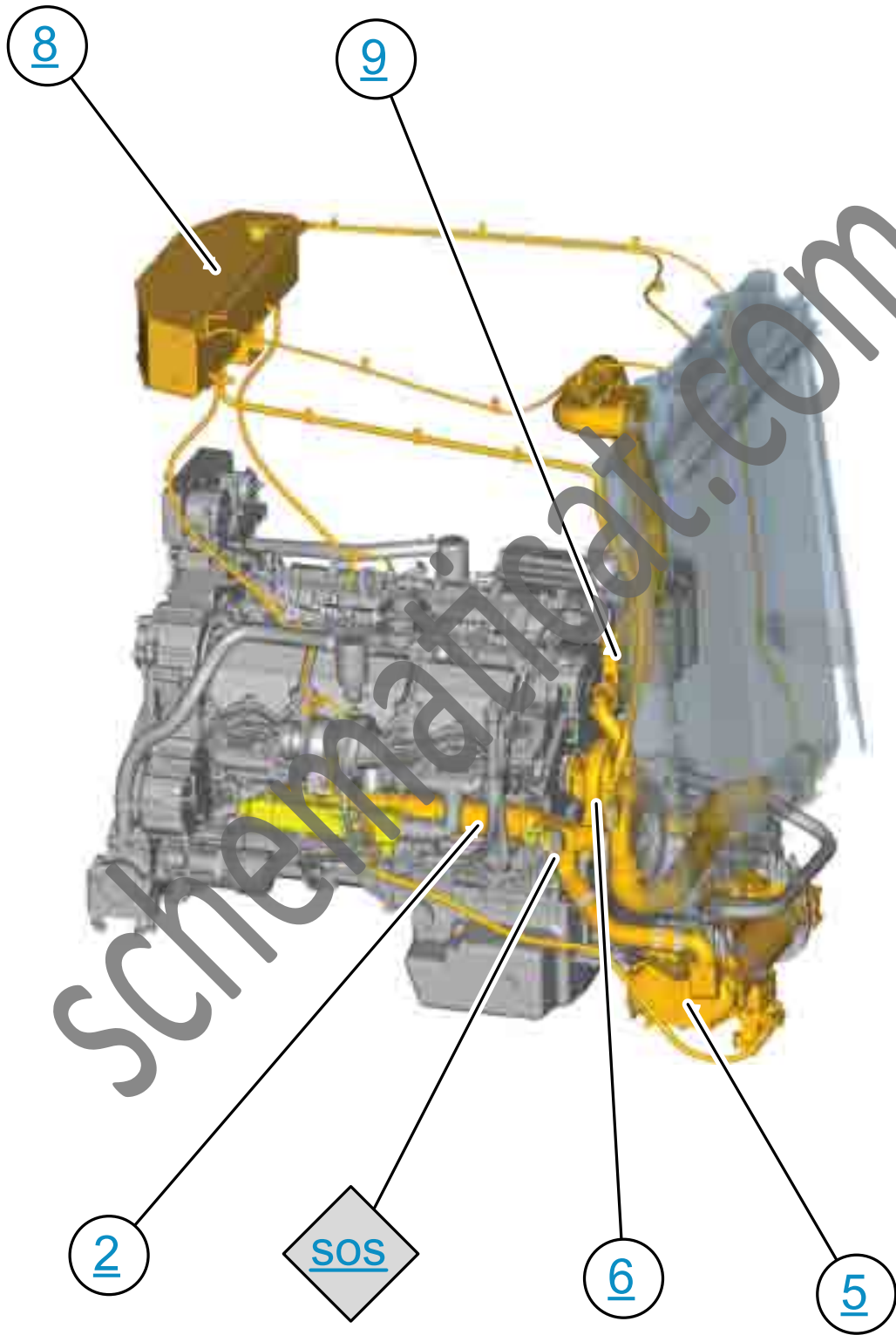
### Hydraulic Schematic Example

#### Current Standard

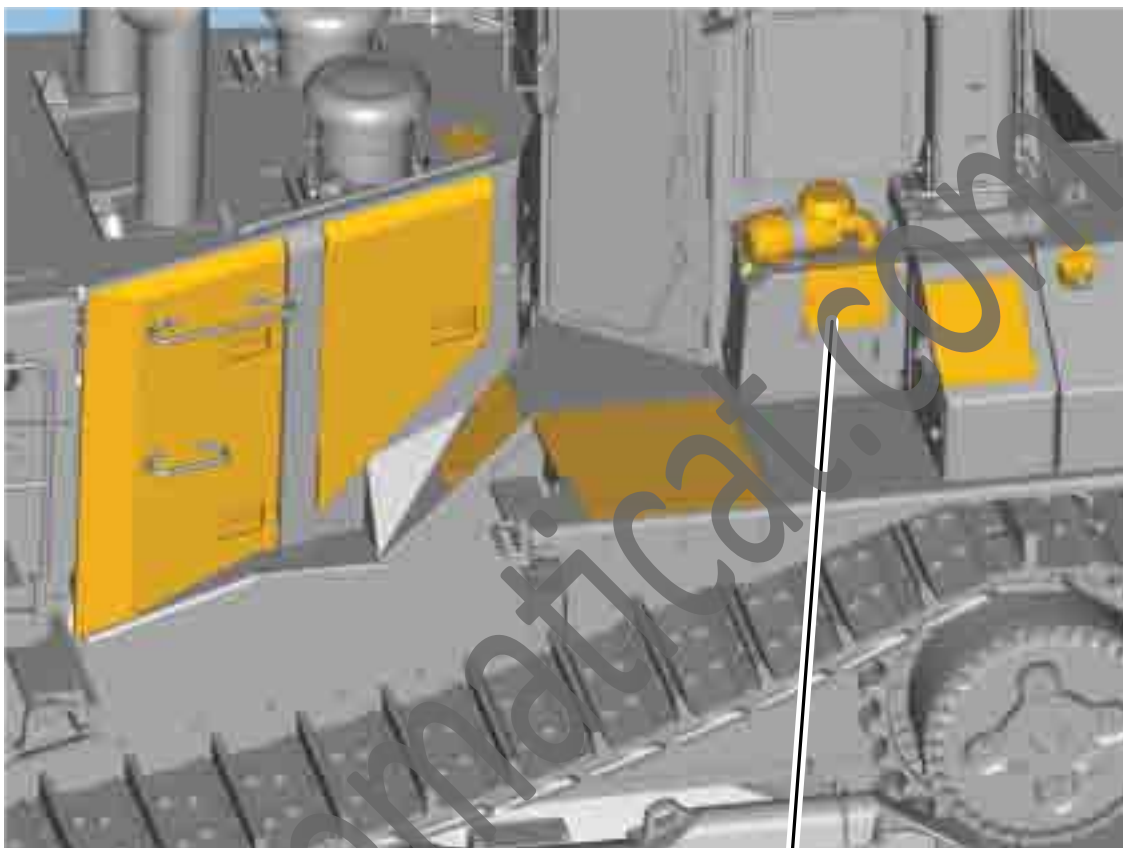




# RIGHT SIDE ENGINE VIEW

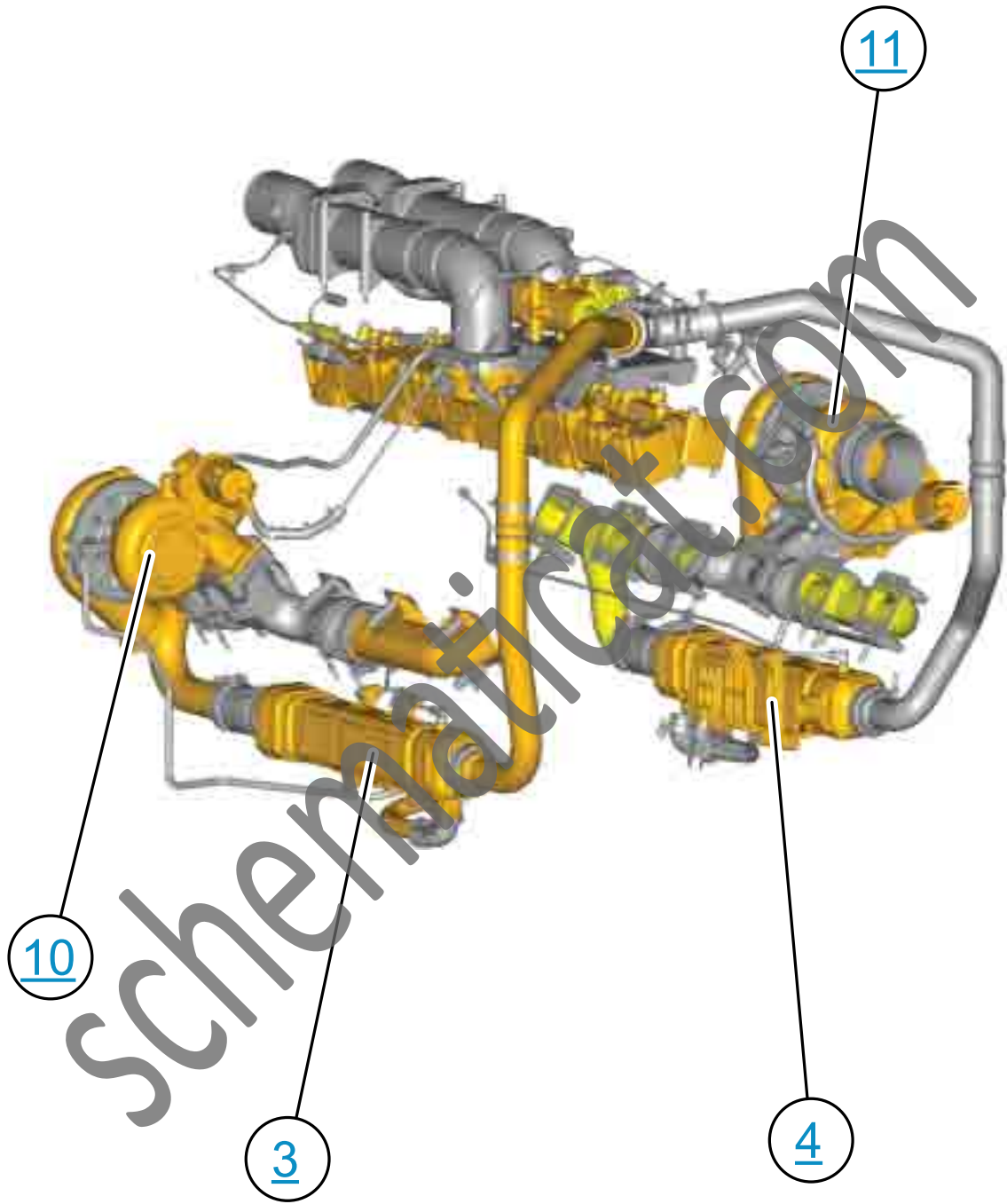






1

# NO<sub>x</sub> REDUCTION SYSTEM RIGHT SIDE VIEW



# RADIATOR REAR VIEW

