

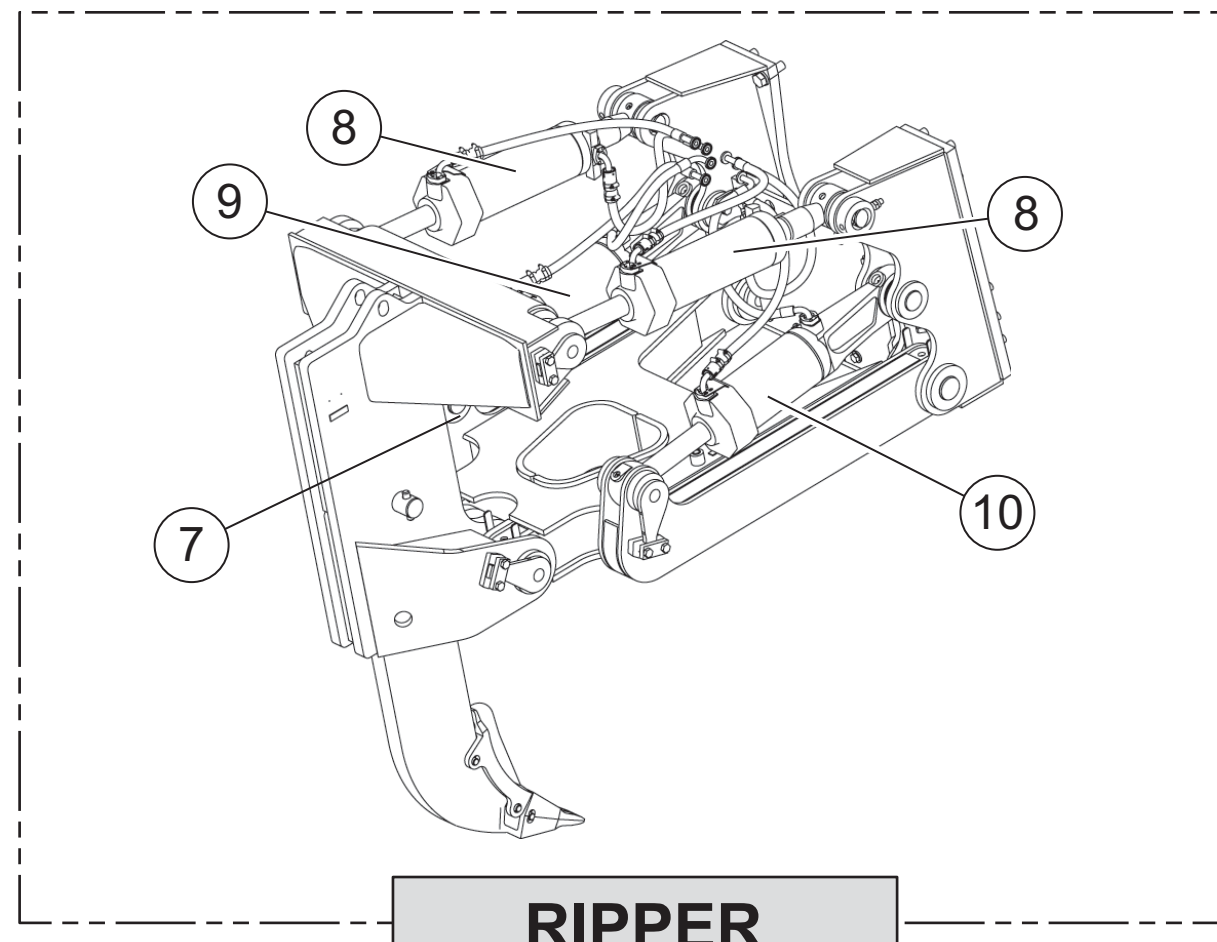
Schematic

D8R Track-Type Tractor Hydraulic System

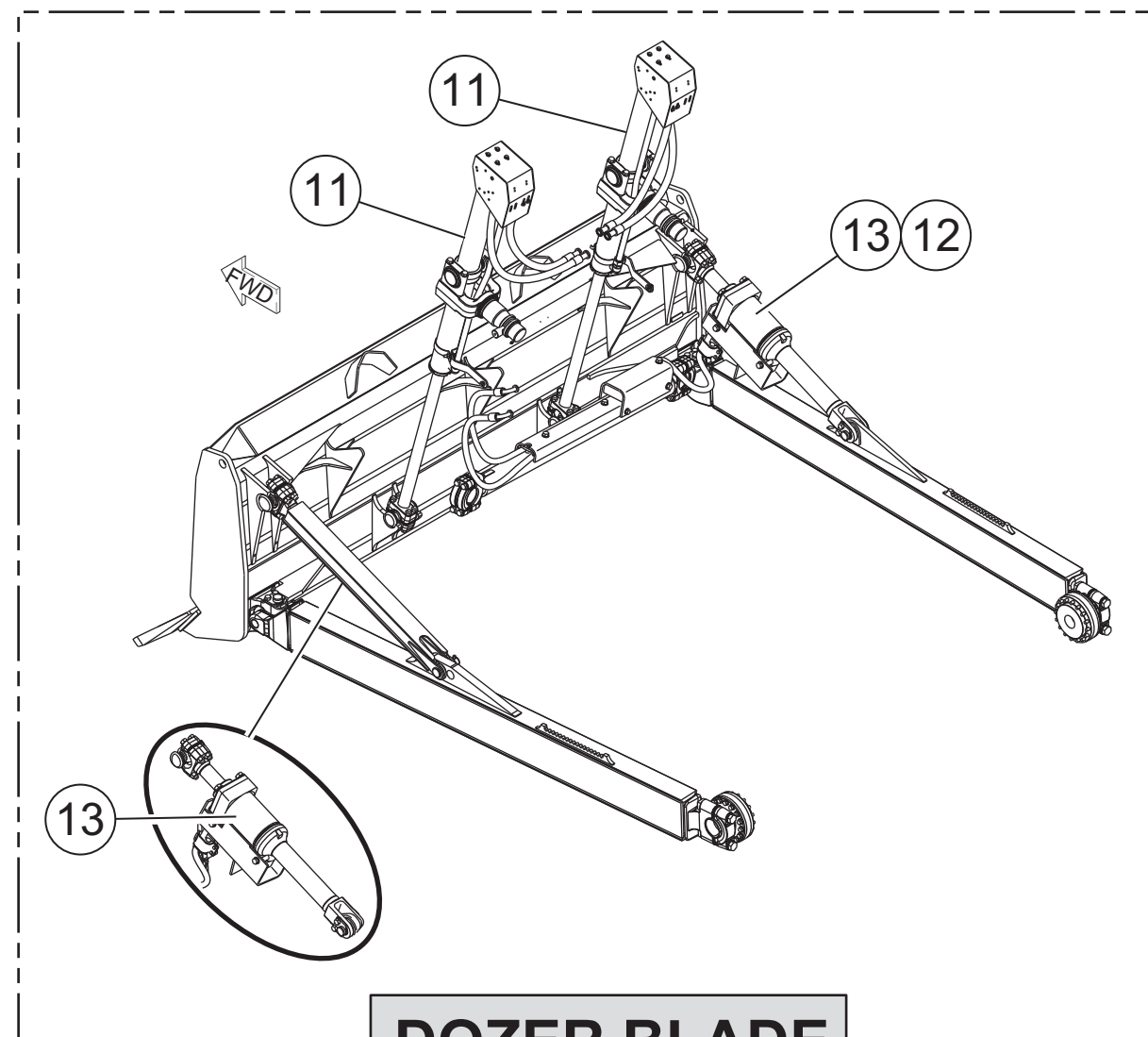
9EM1-UP
T5X1-UP

© 2014 Caterpillar, All Rights Reserved

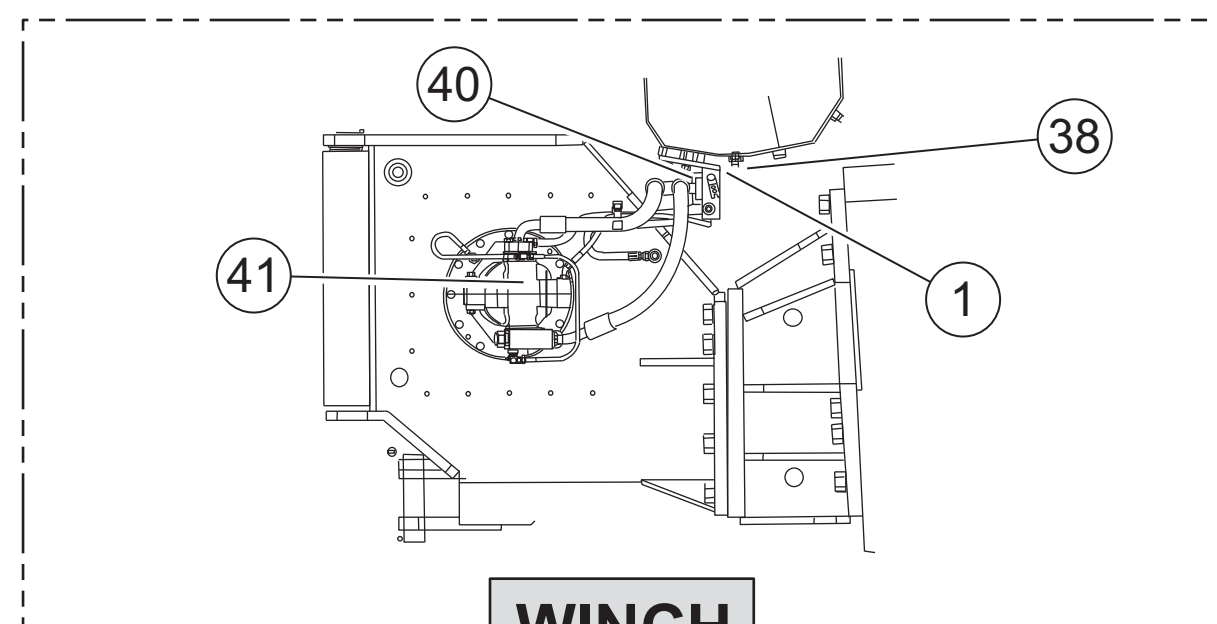
Printed in U.S.A.



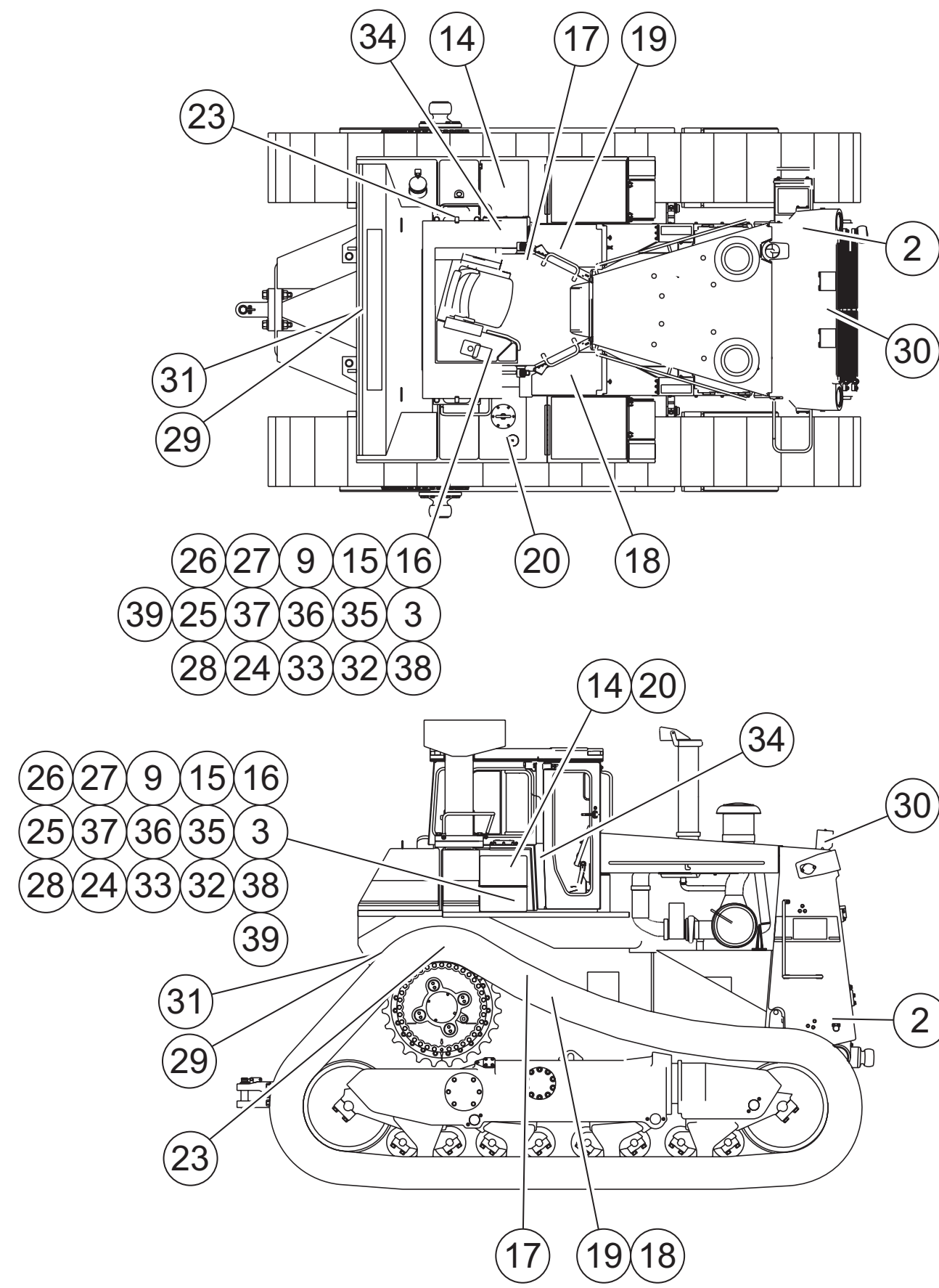
RIPPER



DOZER BLADE

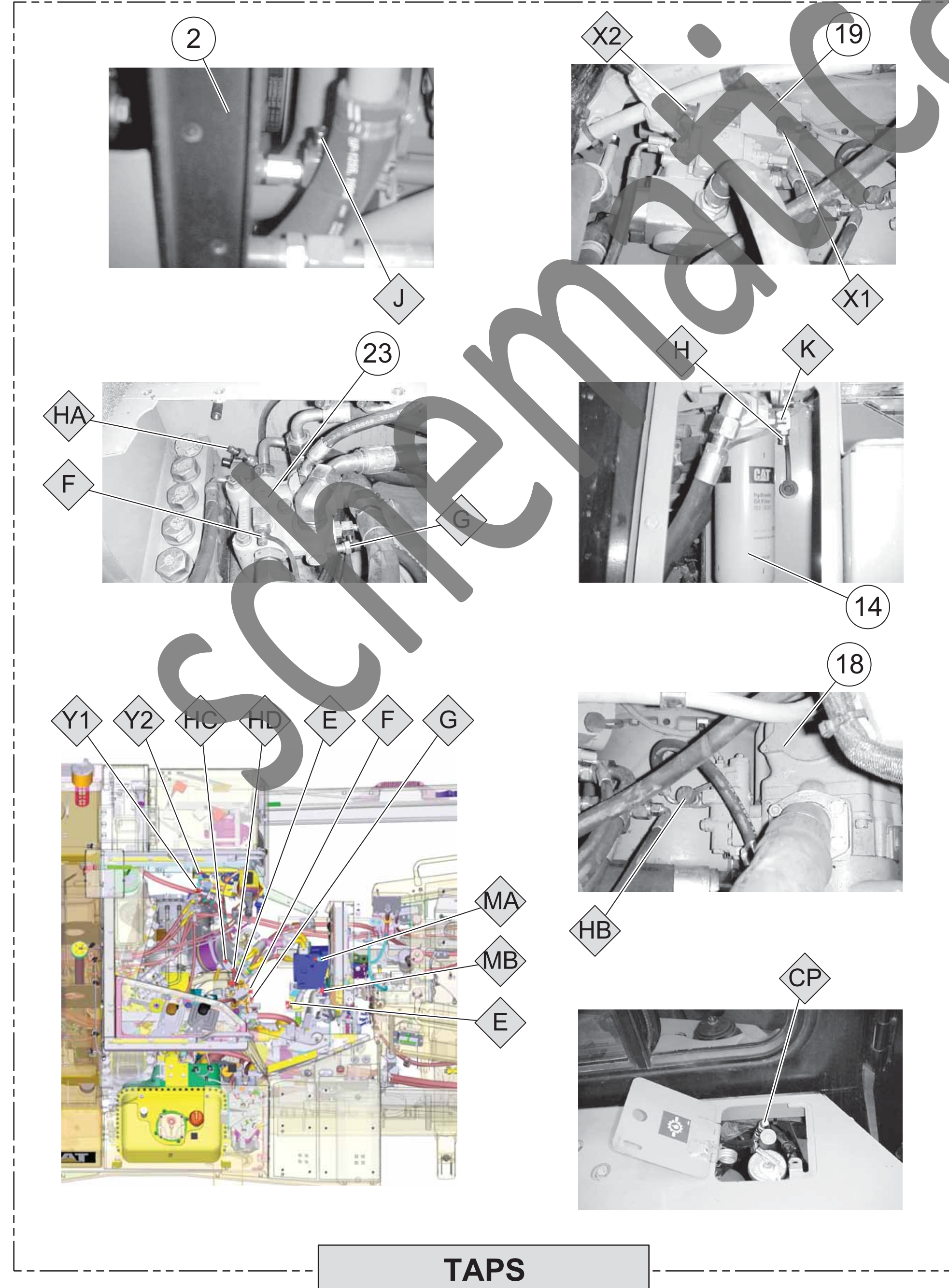


WINCH



Component Locations			
Description	Part Number	Machine Location	Schematic Location
CONTROL GP - WINCH CONTROL	171-9779	1	D-6
COOLER	153-1271	2	E-3
COVER	8E-5455	3	A-5
CYL GP - APRON	N/A	4	E-7
CYL GP - BOWL	N/A	5	B-4
CYL GP - EJECTOR	N/A	6	A-4
CYL GP - PIN PULLER	8E-3113	7	F-1
CYL GP - RIPPER LIFT	155-3653	8	F-7
CYL GP - RIPPER TIP (LH)	155-3652	9	F-7
CYL GP - RIPPER TIP (RH)	165-0102	10	F-7
* CYL GP-LIFT	250-5861	11	E-1, D-1
* CYL GP-TILT	240-7347	12	C-1
* CYL GP-TILT	347-3272	13	E-1, D-1
FILTER GP - STEERING CHG LOOP	183-8610	14	B-2
MANIFOLD GP - INLET CHARGE AND RELIEF	8E-1360	15	B-6
MANIFOLD GP - INLET W/CHARGE RELIEF	4Z-6059	16	B-6
MOTOR GP - STEERING	159-7182	17	F-5
PUMP GP - IMPLEMENT	9T-8346	18	D-3
PUMP GP - STEERING	139-4151	19	F-4
TANK GP - FILTER	164-3700	20	A-2
* VALVE GP - APRON	4Z-6058	21	B-6
* VALVE GP - BLADE AND SCRAPER	4Z-6060	22	A-6
VALVE GP - BYPASS AND PRESSURE CONTROL	9T-8704	23	E-4
VALVE GP - CHARGING RELIEF	104-7574	24	C-5
VALVE GP - LIFT	9T-8991	25	A-6
VALVE GP - LIFT	9T-8991	26	A-7
VALVE GP - LIFT AND BOWL	9T-8991	27	A-6
VALVE GP - PILOT RELIEF	9T-9905	28	C-5
VALVE GP - PIN PULLER CONTROL	188-6140	29	F-1
VALVE GP - QUICK DROP	109-6942	30	D-1
VALVE GP - RIPPER	9T-8989	31	B-6
VALVE GP - RIPPER DIVERTER	9T-8347	32	F-6
VALVE GP - RIPPER LIFT AND TILT	9T-8344	33	A-6
VALVE GP - STEERING PILOT	9T-8693	34	F-2
VALVE GP - TILT	8E-1359	35	A-6
VALVE GP - TILT	8E-1359	36	A-7
VALVE GP - TILT AND EJECTOR	8E-1359	37	A-6
VALVE GP - WINCH	103-8535	38	B-7
VALVE GP - WINCH LIFT AND TILT	110-7698	39	A-7
VALVE GP - WINCH LOGIC BLOCK	152-8377	40	C-6
WINCH GP - TOWING	231-2258	41	D-7

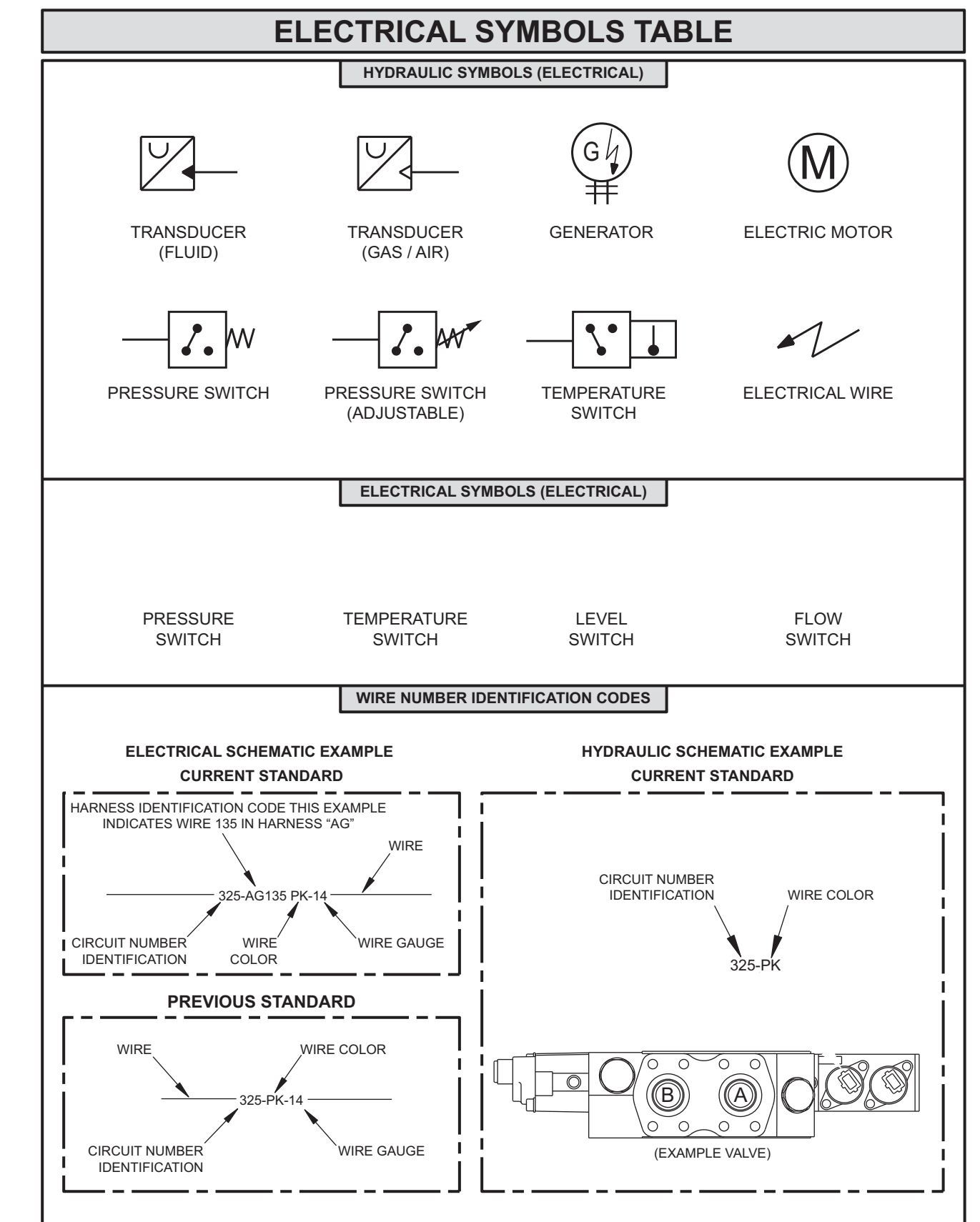
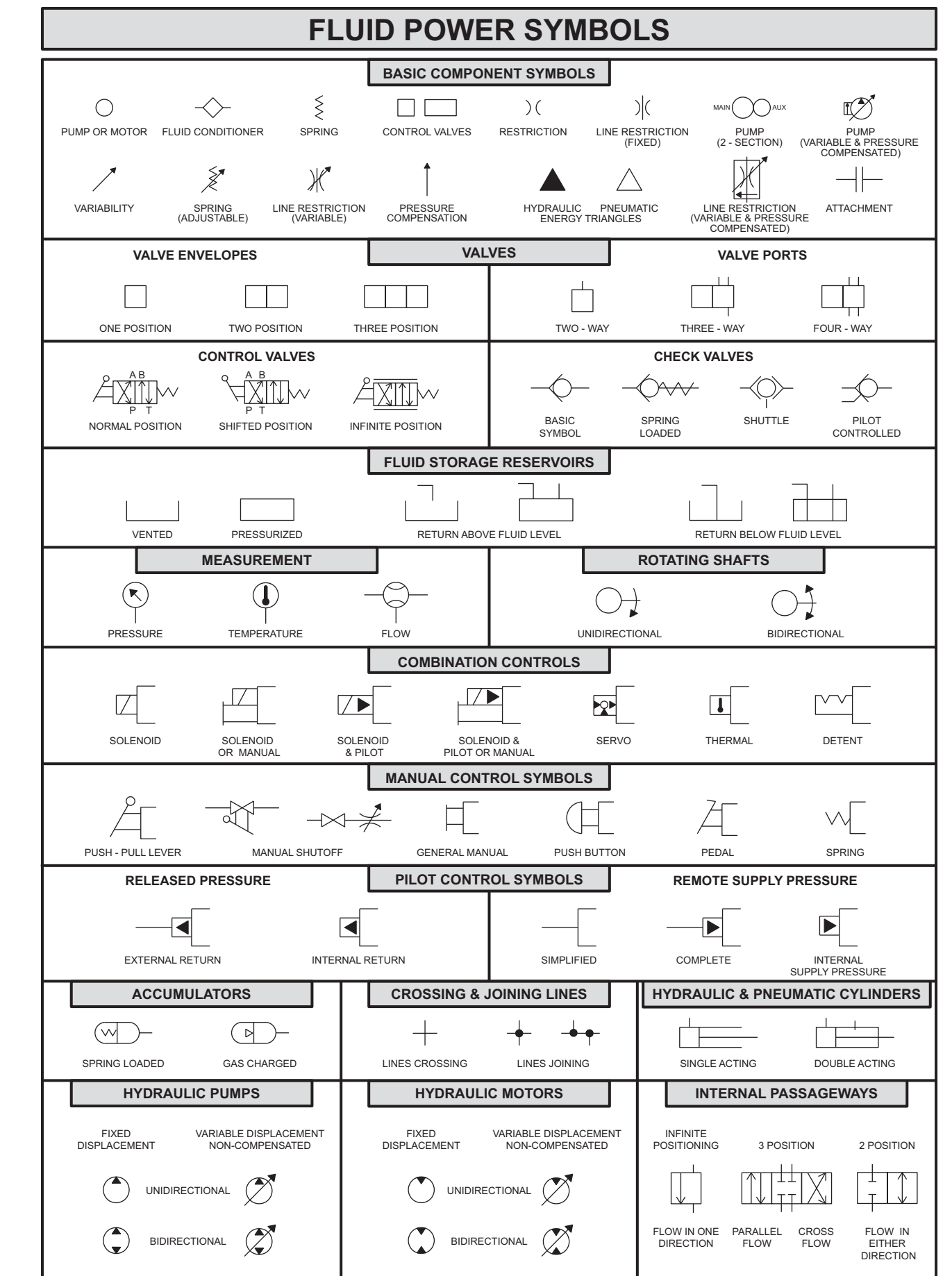
* = Graphic view not available at time of publication.

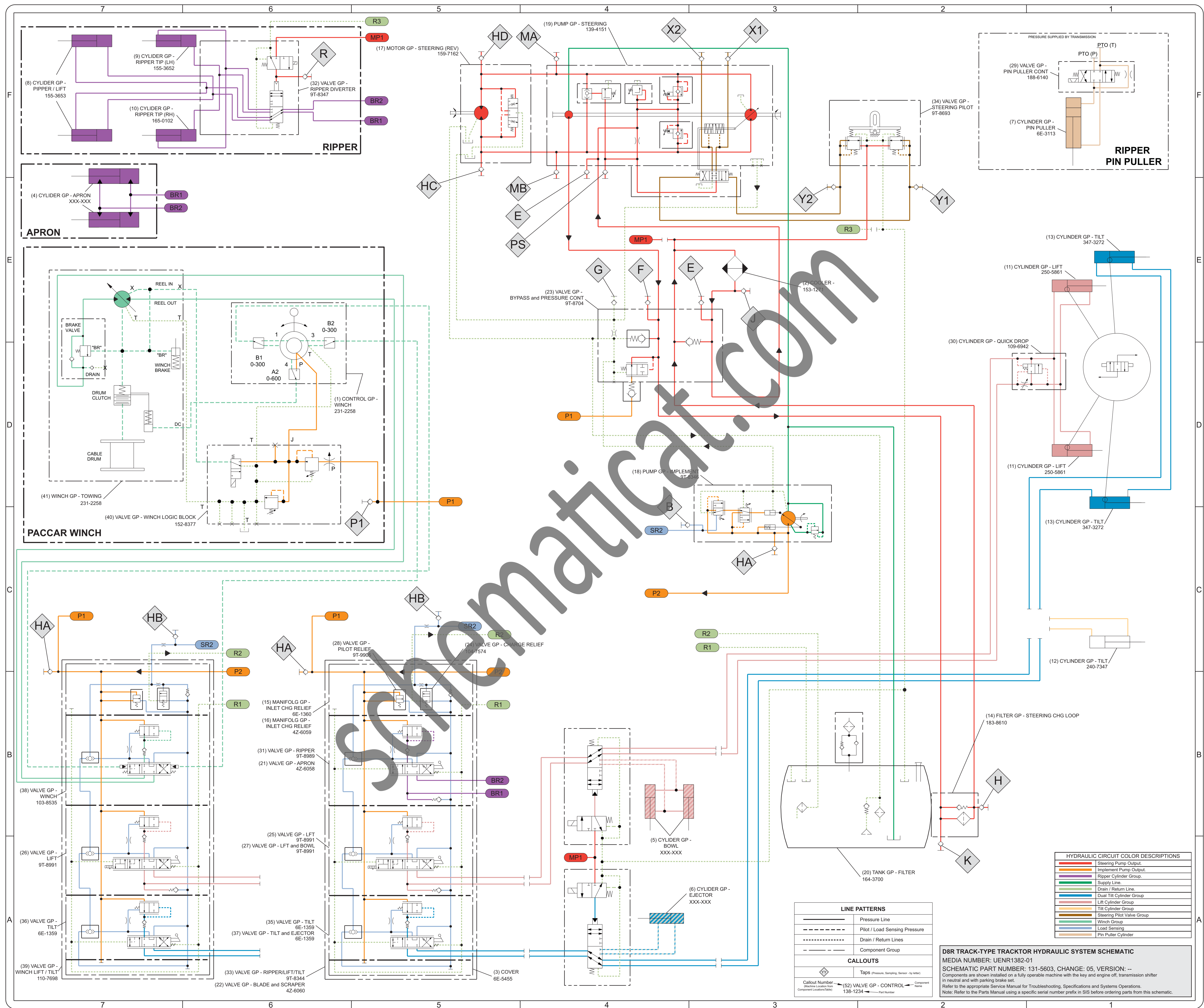


TAPS

Tap Locations Pressure, Sampling, and Sensor		
Tap Number	Description	Schematic Location
A	*IMP PUMP DISCHARGE	C-3
B	*IMP PUMP SIGNAL	C-4
E	CHARGE PUMP RELIEF	F-4, E-3
F	CHARGE PUMP DISCHARGE	F-4
G	CASE RETURN	F-4
H	DOWNSTREAM FILTER	B-2
HA	IMP PUMP DISCHARGE-AT VALVE	C-7, C-6
HB	IMP PUMP SIGNAL-AT VALVE	C-7, C-5
HC	LEFT STEER LOOP-AT MOTOR	F-5
HD	RIGHT STEER LOOP-AT MOTOR	F-5
J	COOLER	E-3
K	UPSTREAM FILTER	A-2
MA	RIGHT STEER LOOP-AT PUMP	F-4
MB	LEFT STEER LOOP-AT PUMP	F-4
PS	*CONTROL SUPPLY	F-4
R	*RIPPER PILOT	F-6
X1	RIGHT STEER ACTUATOR	F-3
X2	LEFT STEER ACTUATOR	F-3
Y1	LEFT STEER PILOT	E-2
Y2	RIGHT STEER PILOT	E-3

* = Graphic view not available at time of publication.





HYDRAULIC CIRCUIT COLOR DESCRIPTIONS	
Red	Steering Pump Output
Blue	Implement Pump Output
Green	Ripper Cylinder Group
Yellow	Supply Line
Black	Drain / Return Line
Light Blue	Dual Tilt Cylinder Group
Light Green	Lift Cylinder Group
Light Yellow	Tilt Cylinder Group
Light Purple	Steering Pilot Valve Group
Light Orange	Winch Group
Light Blue-Gray	Load Sensing
Light Green-Gray	Pin Puller Cylinder

LINE PATTERNS	
—	Pressure Line
- - -	Pilot / Load Sensing Pressure
- · - · -	Drain / Return Lines
- · - · -	Component Group

CALLOUTS	
⬠	Taps Pressure, Sampling, Sensor, (by letter)
⬠	Component Name
⬠	Component Location Table

DBR TRACK-TYPE TRACKTOR HYDRAULIC SYSTEM SCHEMATIC
MEDIA NUMBER: UENR1382-01
SCHEMATIC PART NUMBER: 131-5603, CHANGE: 05, VERSION: --
Components are shown installed on a fully operable machine with the key and engine off, transmission shifter in neutral and with parking brake set.
Refer to the appropriate Service Manual for Troubleshooting, Specifications and Systems Operations.
Note: Refer to the Parts Manual using a specific serial number prefix in SIS before ordering parts from this schematic.