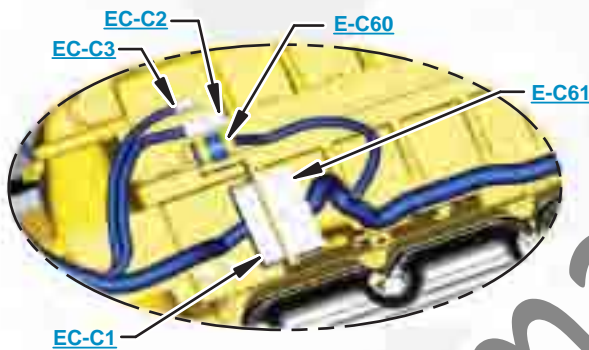


This document is best viewed at a screen resolution of 1024 X 768.

To set your screen resolution do the following:
RIGHT CLICK on the **DESKTOP**.
 Select **PROPERTIES**.
CLICK the **SETTINGS TAB**.
MOVE THE SLIDER under **SCREEN RESOLUTION** until it shows **1024 X 768**.
CLICK OK to apply the resolution.

The Bookmarks panel will allow you to quickly navigate to points of interest.



Click on any text that is BLUE and underlined. These are hyperlinks that can be used to navigate the schematic and machine views.

VIEW ALL CALLOUTS

When only one callout is showing on a machine view this button will make all of the callouts visible. This button is located in the top right corner of every machine view page.

HOTKEYS (Keyboard Shortcuts)		
	FUNCTION	KEYS
	Zoom In	"CTRL" / "+"
	Zoom Out	"CTRL" / "-"
	Fit to Page	"CTRL" / "0" (zero)
	Hand Tool	"SPACEBAR" (hold down)
	Find	"CTRL" / "F"



Schematic

D8R Track-Type Tractor Hydraulic System

7XM1-UP
9EM1-UP

schematiccat.com

COMPONENT LOCATION



Description	Machine Location	Schematic Location
Bulldozer Dual Tilt Cylinder Group	4	C-1, E-1
Bulldozer Lift Cylinder Group	5	D-2, E-2
Bulldozer Lift valve	12	B-6
Bulldozer Tilt Cylinder Group	7	C-1
Bulldozer Tilt Valve	11	A-6
Bypass / Pressure Control Valve	19	D-4
Charging Relief Valve	17	C-5
Cooler	20	E-4
Cover	10	A-5
Implement Pump Group	18	C-4
Inlet Manifold	14	C-6
Pilot Operated Relief Valve	16	C-5
Pin Puller Cylinder	24	E-6
Quick - Drop Valve	6	D-2
Ripper Diverter Valve	23	D-6
Ripper Lift / Tilt Valve	15	C-6
Ripper Lift Cylinder	22	E-7, D-7
Ripper Tip Cylinder	21	D-7
Ripper Valve	13	B-6
Steering Charge Loop Filter Group	8	B-3
Steering Motor Group	1	F-5
Steering Pilot Valve Group	3	E-3
Steering Pump Group	2	F-5
Tank Group	9	B-3

TAP LOCATION

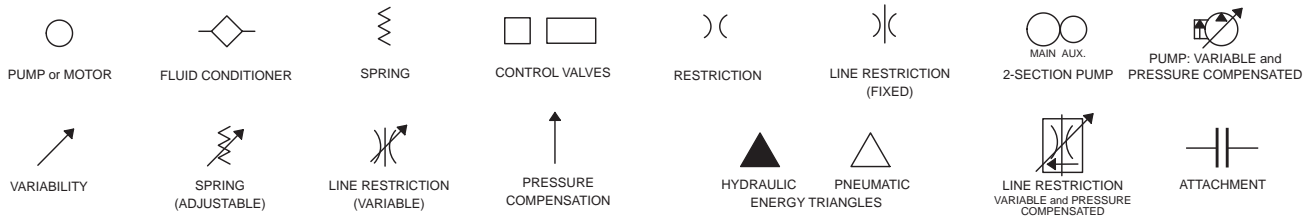


Tap Number	Description	Schematic Location
A	Right Steer Loop (at Motor)	F-5
B	Right Steer Loop (at Pump)	F-5
C	Left Steer Actuator	F-4
D	Right steer Actuator	F-4
E	Left Steer Loop (at Motor)	E-5
F	Left Steer Loop (at Pump)	E-5
G	Charge Pump Relief	E-5
H	Control Supply	E-5
J	Right Steer Pilot	E-3
K	Left Steer Pilot	E-3
L	Ripper Pilot	D-6
M	Case Return	D-4
N	Charge Pump Discharge	D-4
P	Charge Pump Relief	D-4
R	Cooler	D-4
S	Implement Pump Discharge (at Valve)	C-6
T	Implement Pump Signal (at Valve)	C-5
U	Implement Pump Signal	C-4
V	Implement Pump Discharge	C-4
W	Downstream Filter	B-2

FLUID POWER SYMBOLS



BASIC COMPONENT SYMBOLS



VALVE ENVELOPES

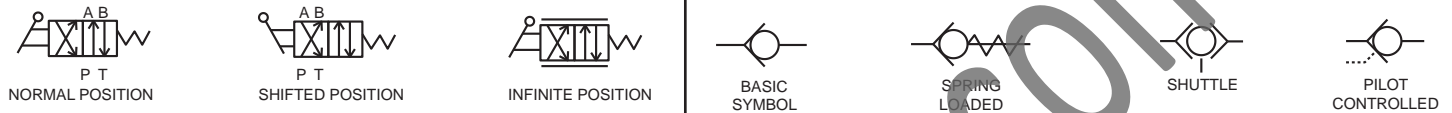
VALVES

VALVE PORTS



CONTROL VALVES

CHECK VALVES



FLUID STORAGE RESERVOIRS



MEASUREMENT

ROTATING SHAFTS



COMBINATION CONTROLS



MANUAL CONTROL SYMBOLS



RELEASED PRESSURE

PILOT CONTROL SYMBOLS

REMOTE SUPPLY PRESSURE



ACCUMULATORS

CROSSING AND JOINING LINES

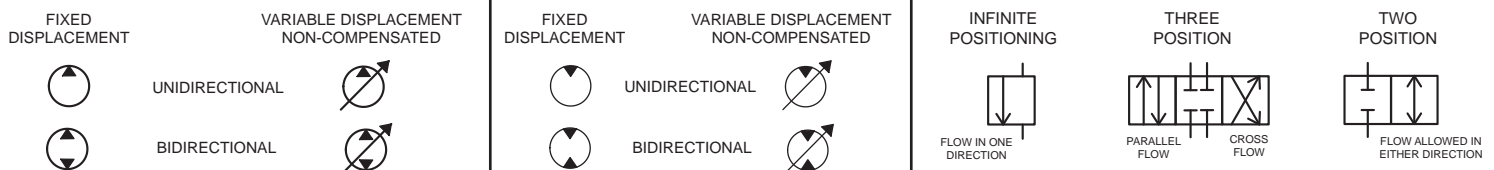
HYDRAULIC AND PNEUMATIC CYLINDERS



HYDRAULIC PUMPS

HYDRAULIC MOTORS

INTERNAL PASSAGEWAYS



ELECTRICAL SYMBOLS



Hydraulic Symbols (Electrical)



Transducer
(Fluid)



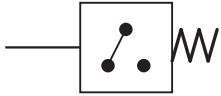
Transducer
(Gas / Air)



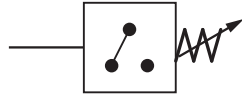
Generator



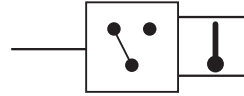
Electric Motor



Pressure Switch



Pressure Switch
(Adjustable)

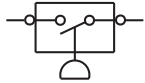


Temperature Switch

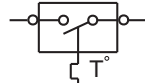


Electrical Wire

Electrical Symbols (Electrical)



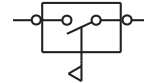
Pressure
Symbol



Temperature
Symbol



Level
Symbol

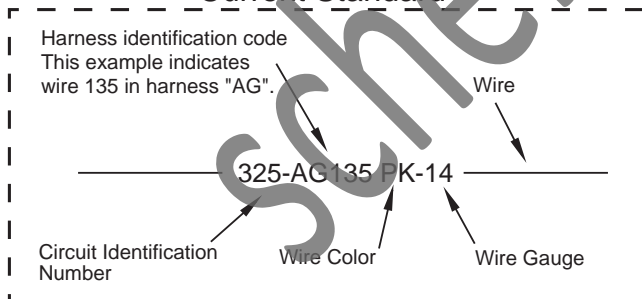


Flow
Symbol

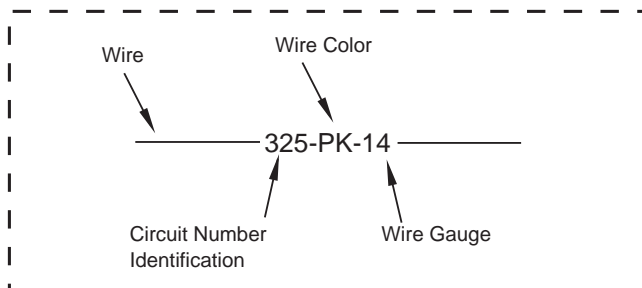
Wire Number Identification Codes

Electrical Schematic Example

Current Standard

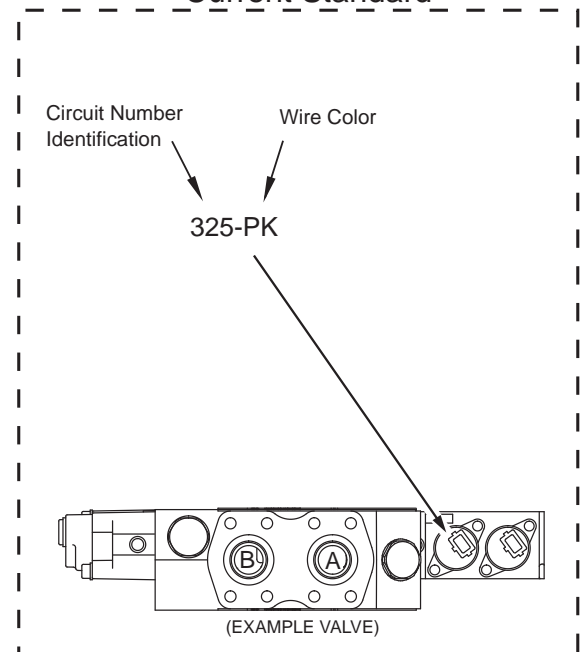


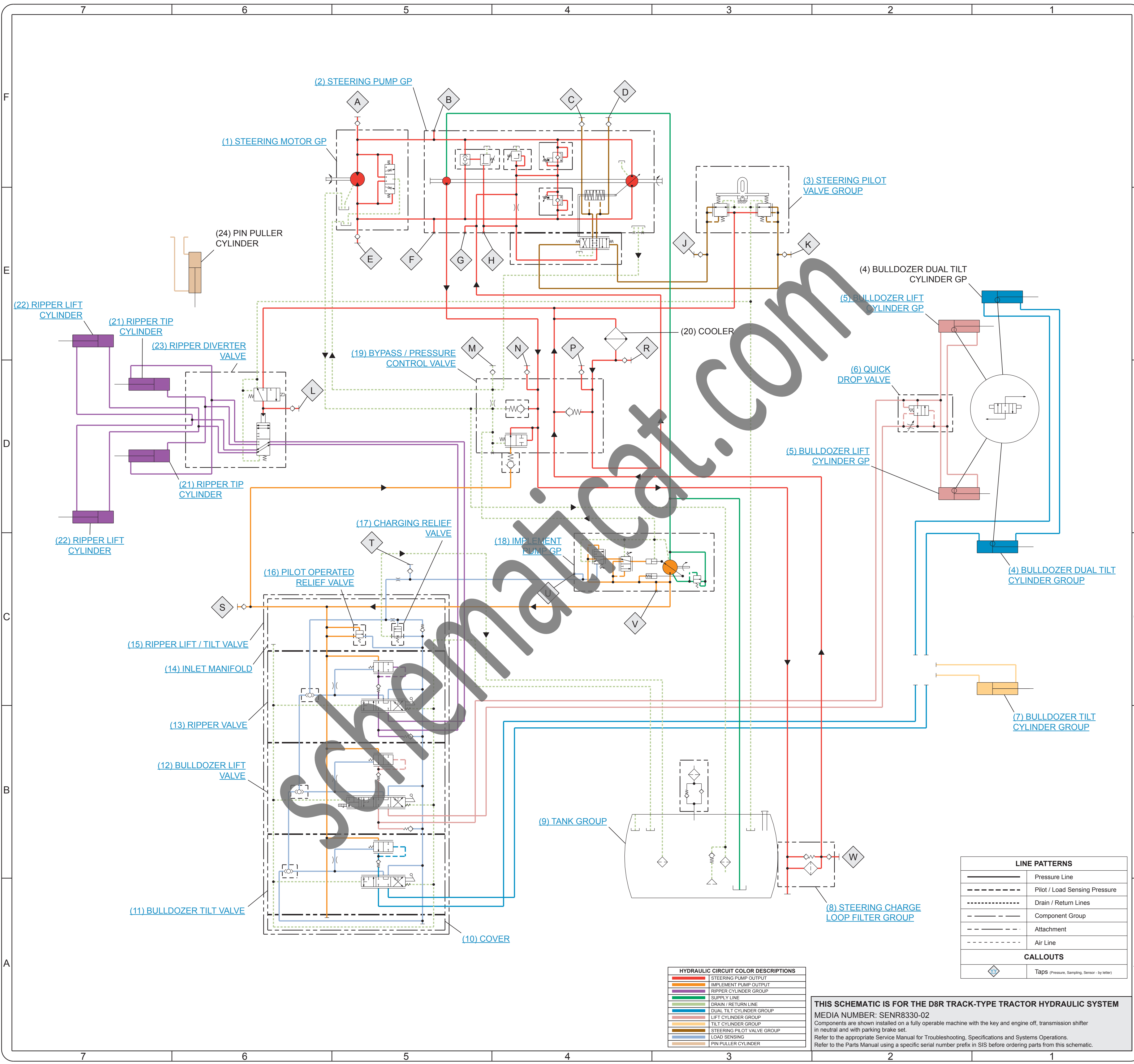
Previous Standard



Hydraulic Schematic Example

Current Standard





HYDRAULIC CIRCUIT COLOR DESCRIPTIONS

Red	STEERING PUMP OUTPUT
Orange	IMPLEMENT PUMP OUTPUT
Green	RIPPER CYLINDER GROUP
Blue	SUPPLY LINE
Light Blue	DRAIN / RETURN LINE
Dark Blue	DUAL TILT CYLINDER GROUP
Light Green	LIFT CYLINDER GROUP
Light Orange	TILT CYLINDER GROUP
Light Purple	STEERING PILOT VALVE GROUP
Light Yellow	LOAD SENSING
Light Brown	PIN PULLER CYLINDER

LINE PATTERNS

Solid line	Pressure Line
Dashed line	Pilot / Load Sensing Pressure
Dotted line	Drain / Return Lines
Line with circles	Component Group
Line with triangles	Attachment
Line with squares	Air Line

CALLOUTS

Diamond symbol	Taps (Pressure, Sampling, Sensor - by letter)
----------------	---

THIS SCHEMATIC IS FOR THE D8R TRACK-TYPE TRACTOR HYDRAULIC SYSTEM
MEDIA NUMBER: SENR8330-02
 Components are shown installed on a fully operable machine with the key and engine off, transmission shifter in neutral and with parking brake set.
 Refer to the appropriate Service Manual for Troubleshooting, Specifications and Systems Operations.
 Refer to the Parts Manual using a specific serial number prefix in SIS before ordering parts from this schematic.

MACHINE COMPONENT LOCATIONS

