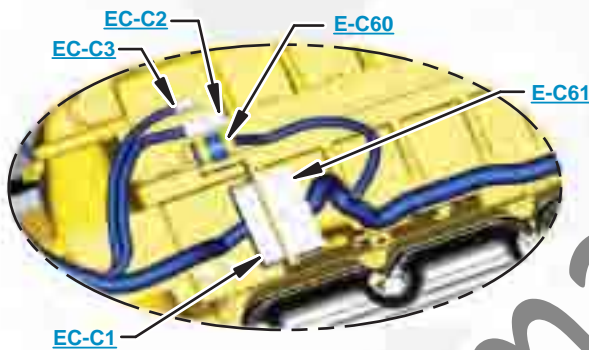




This document is best viewed at a screen resolution of 1024 X 768.

To set your screen resolution do the following:
RIGHT CLICK on the **DESKTOP**.
 Select **PROPERTIES**.
CLICK the **SETTINGS TAB**.
MOVE THE SLIDER under **SCREEN RESOLUTION** until it shows **1024 X 768**.
CLICK OK to apply the resolution.

The Bookmarks panel will allow you to quickly navigate to points of interest.



Click on any text that is BLUE and underlined. These are hyperlinks that can be used to navigate the schematic and machine views.

VIEW ALL CALLOUTS

When only one callout is showing on a machine view this button will make all of the callouts visible. This button is located in the top right corner of every machine view page.

HOTKEYS (Keyboard Shortcuts)		
	FUNCTION	KEYS
	Zoom In	"CTRL" / "+"
	Zoom Out	"CTRL" / "-"
	Fit to Page	"CTRL" / "0" (zero)
	Hand Tool	"SPACEBAR" (hold down)
	Find	"CTRL" / "F"



Schematic

D8T Track-Type Tractor Hydraulic System

MLN1-1499
FCT1-1012

SchematicCat.com

COMPONENT LOCATION



STANDARD ARRANGMENT			
Description	Part Number	Machine Location	Schematic Location
STANDARD ARRANGMENT			
ACCUMULATOR GP	200-0750	8	I-3
CORE AS - COOLER	334-3321	22	G-1
CYL GP - LIFT	250-5861	15	J-6
CYL GP - TILT	240-7347	16	I-4
FILTER GP	341-1330	9	G-3
FILTER GP - CASE DRAIN and BYPASS VALVE	1R-0777	19	A-3
MANIFOLD - RETURN MANIFOLD	247-7788	12	B-5
MANIFOLD - SUCTION GALLERY	209-1392	11	D-7
MANIFOLD - SUCTION MANIFOLD	236-4540	13	A-4
MOTOR GP - STEERING	252-5127	4	E-5
MOTOR GP - W/ANTI-CAVITATION VALVE-FAN	205-1821	5	G-1
PUMP GP - FAN	325-9789	2	E-2
PUMP GP - IMPLEMENT	214-1091	3	E-7
PUMP GP - STEERING	325-9788	1	E-4
SENSOR - TANK TEMP SENSOR	256-6453	25	B-3
SENSOR GP - CHARGE/PILOT PRESSURE	320-3064	26	H-3
SENSOR GP - IMPL PUMP PRESSURE	296-5270	24	G-7, I-12
SENSOR GP - STEERING MOTOR SPEED	319-6491	27	E-6
SWITCH AS - CHARGE/PILOT FILTER BYPASS PRESS.	227-6744	23	G-3
TANK GP - OIL FILTER	341-3446	17	B-3
VALVE AS - CONTROL THERMAL and PRESSURE RELIEF COOLER BYPASS	124-8335	6	G-1
VALVE GP - FAN CHECK	4E-1437	21	H-1
VALVE GP - QUICK DROP VALVE	340-2788	14	I-6
VALVE GP - SHUTOFF IMPL PILOT SUPPLY, LOCKOUT	341-9000	7	H-3
VALVE GP - STEERING CHARGE (COLD OIL RELIEF)	198-9220	20	D-6
VALVE GP - VACUUM BREAKER/BREATHER ELEMENT	116-2810	18	B-4
VALVE GP - 2 BANK (DOZER LIFT,TILT)	336-5703	10	I-7
VALVE GP - LIFT SECTION	336-5710	10A	G-5
VALVE GP - TILT SECTION	347-3828	10B	G-4
VALVE GP - MANIFOLD	351-3626	10C	G-6
COVER - VALVE END COVER	344-9058	10D	I-4

OPTIONS LIST			
Description	Part Number	Machine Location	Schematic Location
RIPPER			
CYL GP - PIN PULLER	6E-3113	33	A-12
CYL GP - RIPPER LIFT	155-3653	30	G-16
CYL GP - RIPPER TIP (LEFT)	155-3652	31	G-15
CYL GP - RIPPER TIP (RIGHT)	165-0102	32	G-14
MANIFOLD - RIPPER CYL SUPPLY AND RETURN MANIFOLD	211-9491	29	F-15
VALVE GP - PIN PULLER CONTROL	188-6140	34	B-11
VALVE GP - 4 BANK (DOZER LIFT,TILT,RIPPER LIFT, RIPPER TILT)	336-5705	28	H-13
VALVE GP - LIFT SECTION	362-3310	28A	F-12
VALVE GP - TILT SECTION	362-3309	28B	F-11
VALVE GP - RIPPER SECTION (LIFT)	364-8034	28C	F-10
VALVE GP - RIPPER SECTION (TILT)	364-8041	28D	F-9
MANIFOLD GP - RIPPER INLET	351-3626	28E	F-12
COVER - VALVE END COVER	344-9058	28F	F-8
WINCH			
MANIFOLD GP - CONTROL	191-1443	44	I-14
VALVE GP - 3 BANK (DOZER LIFT,TILT,WINCH)	336-5704	43	J-12
VALVE GP - LIFT SECTION	336-5710	43A	I-11
VALVE GP - TILT SECTION	362-3309	43B	I-10
VALVE GP - WINCH SECTION	347-3830	43C	I-9
MANIFOLD GP - WINCH INLET	351-3626	43D	I-12
COVER - VALVE END	344-9058	43E	J-8
WINCH AR - PACCAR WINCH UNIT	216-9006	45	J-14
5 BANK W/3 FUNCTION REAR AUXILIARY			
VALVE GP - 5 BANK (DOZER LIFT,TILT,AUX x 2, AUX,)	336-5706	35	E-15
VALVE GP - LIFT SECTION	336-5710	35A	C-14
VALVE GP - TILT SECTION	362-3309	35B	C-13
VALVE GP - AUXILIARY SECTION	362-3312	35C	C-11
VALVE GP - AUXILIARY SECTION	347-3831	35D	C-10
MANIFOLD GP - REAR AUXILIARY INLET	351-3626	35E	C-14
COVER - VALVE END	344-9058	35F	C-9

Items blocked in gray = implement valve groups.

TAP LOCATION



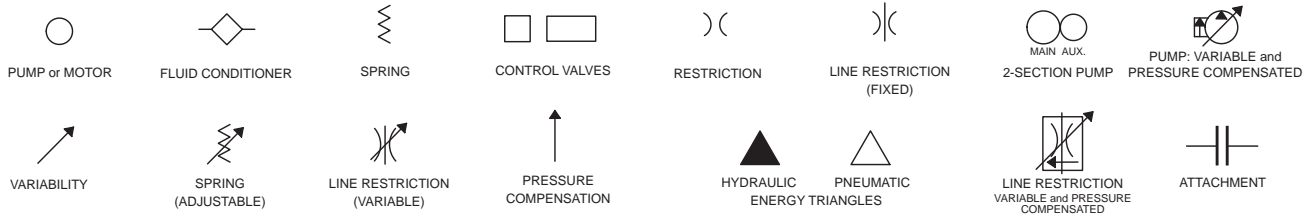
Description	Tap Number	Schematic Location
ACCUMULATOR PRESS.	AP	I-3
CHARGE PUMP PRESS. (SOS)	E	G-3
FAN PUMP DISCHARGE	HFPD	F-2
HYD PILOT DOZER LOWER	* HPDL	G-6
HYD PILOT DOZER RAISE	* HPDR	I-6
HYD PILOT TILT RIGHT	* HPTR	G-5
HYD PILOT TILT LEFT	* HPTL	I-5
IMPL-PUMP-DISCHARGE	* HA	G-7
IMPL-PUMP-SIGNAL	* HB	I-6
LEFT STEER LOOP PRESS.	HC	D-5
PILOT REAR AUX A PORT	HPAA	E-12
PILOT REAR AUX B PORT	HPAB	C-12
PILOT REAR AUX C PORT	HPAC	E-11
PILOT REAR AUX D PORT	HPAD	C-11
PILOT REAR AUX E PORT	HPAE	E-10
PILOT REAR AUX F PORT	HPAF	C-10
PILOT RIPPER IN	HPRI	F-9
PILOT RIPPER LOWER	HPRL	H-10
PILOT RIPPER OUT	HPRO	H-9
PILOT RIPPER RAISE	HPRR	F-10
PILOT SUPPLY	HPS	H-3
RIGHT STEER LOOP PRESS.	HD	F-5
WINCH REEL OUT	HPWRO	H-9
WINCH REEL IN	HPWRI	J-9
PRESSURE RIGHT STEER	X2	D-4
PRESSURE LEFT STEER	X1	D-4

* The following taps appear on each implement valve: HA, HB, HPDL, HPDR, HPTR and HPTL

FLUID POWER SYMBOLS



BASIC COMPONENT SYMBOLS



VALVE ENVELOPES

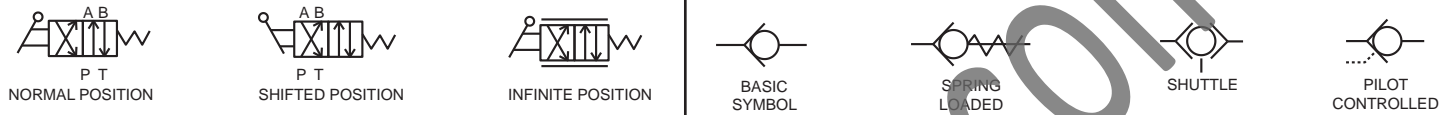
VALVES

VALVE PORTS



CONTROL VALVES

CHECK VALVES



FLUID STORAGE RESERVOIRS



MEASUREMENT

ROTATING SHAFTS



COMBINATION CONTROLS



MANUAL CONTROL SYMBOLS



RELEASED PRESSURE

PILOT CONTROL SYMBOLS

REMOTE SUPPLY PRESSURE



ACCUMULATORS

CROSSING AND JOINING LINES

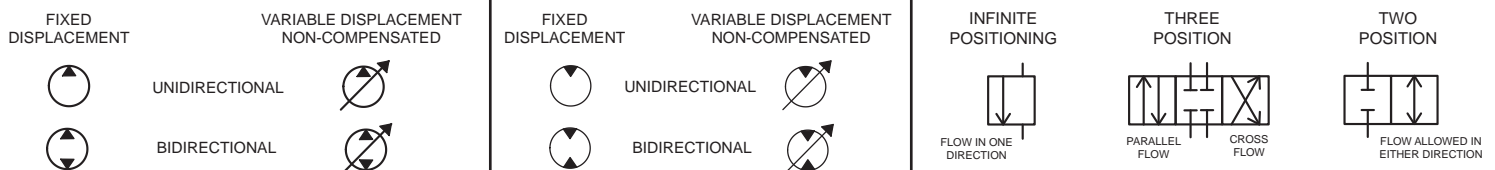
HYDRAULIC AND PNEUMATIC CYLINDERS



HYDRAULIC PUMPS

HYDRAULIC MOTORS

INTERNAL PASSAGEWAYS



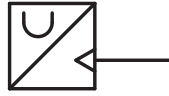
ELECTRICAL SYMBOLS



Hydraulic Symbols (Electrical)



Transducer
(Fluid)



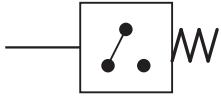
Transducer
(Gas / Air)



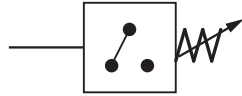
Generator



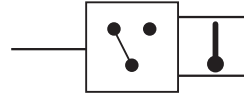
Electric Motor



Pressure Switch



Pressure Switch
(Adjustable)

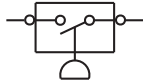


Temperature Switch

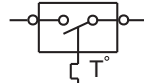


Electrical Wire

Electrical Symbols (Electrical)



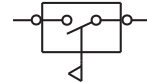
Pressure
Symbol



Temperature
Symbol



Level
Symbol

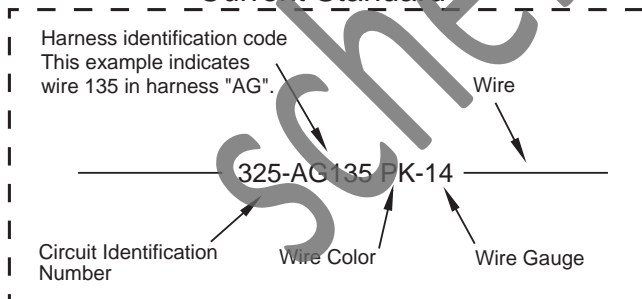


Flow
Symbol

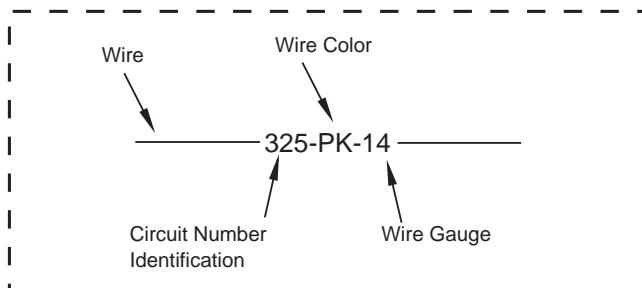
Wire Number Identification Codes

Electrical Schematic Example

Current Standard

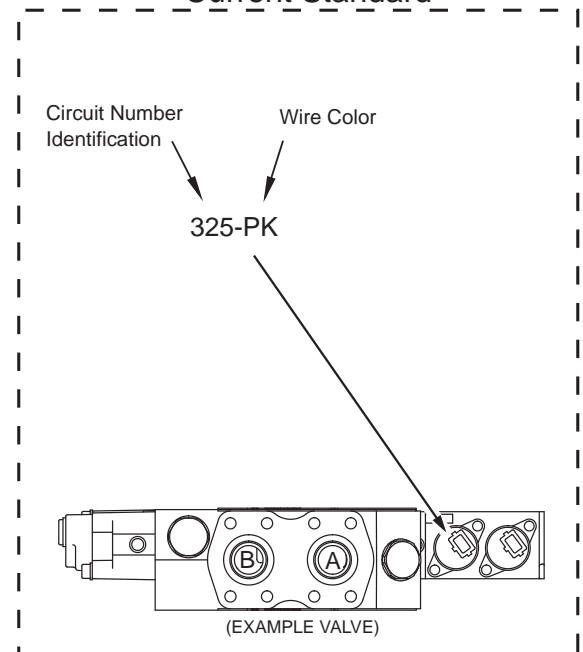


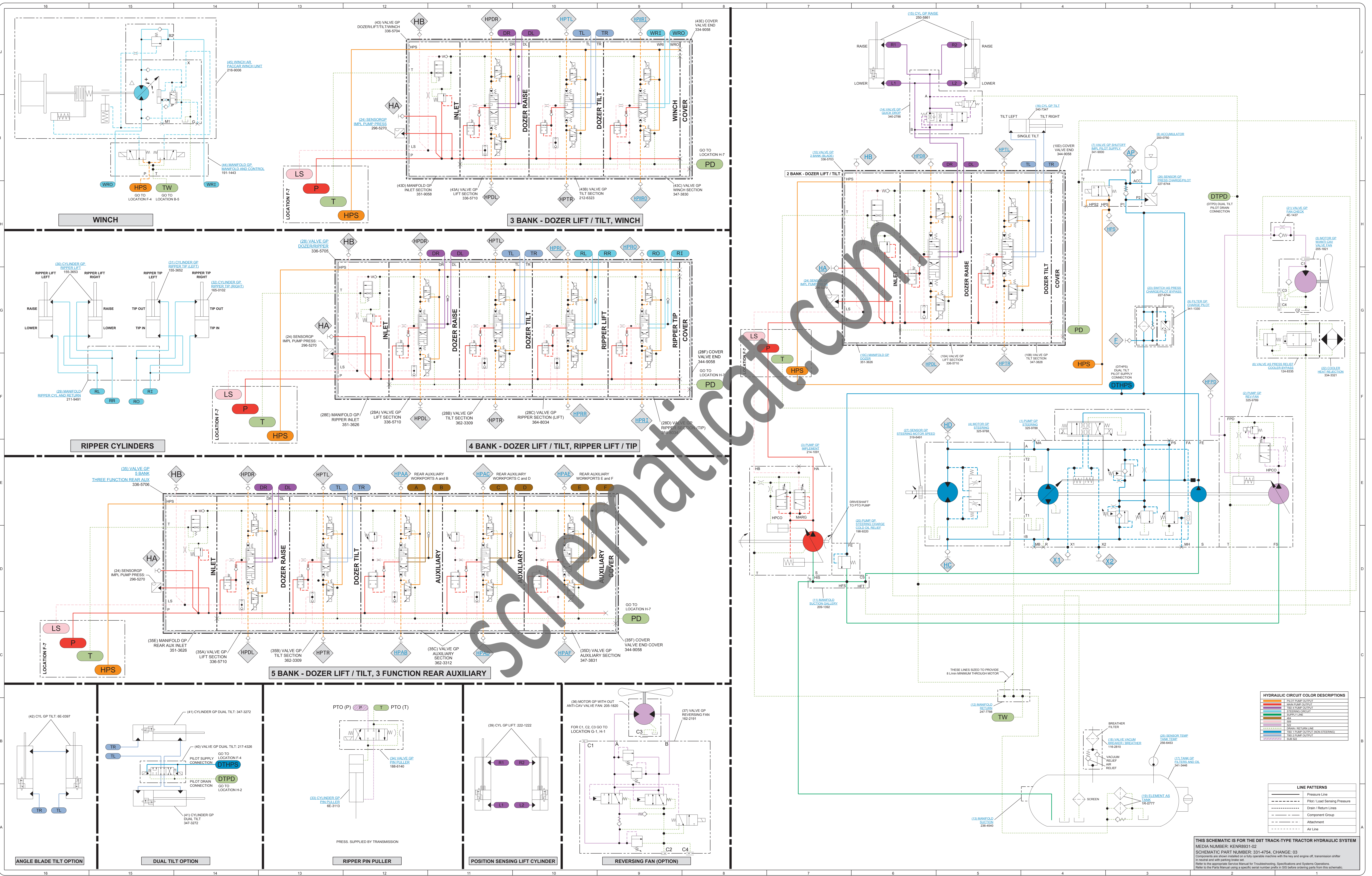
Previous Standard



Hydraulic Schematic Example

Current Standard





HYDRAULIC CIRCUIT COLOR DESCRIPTIONS

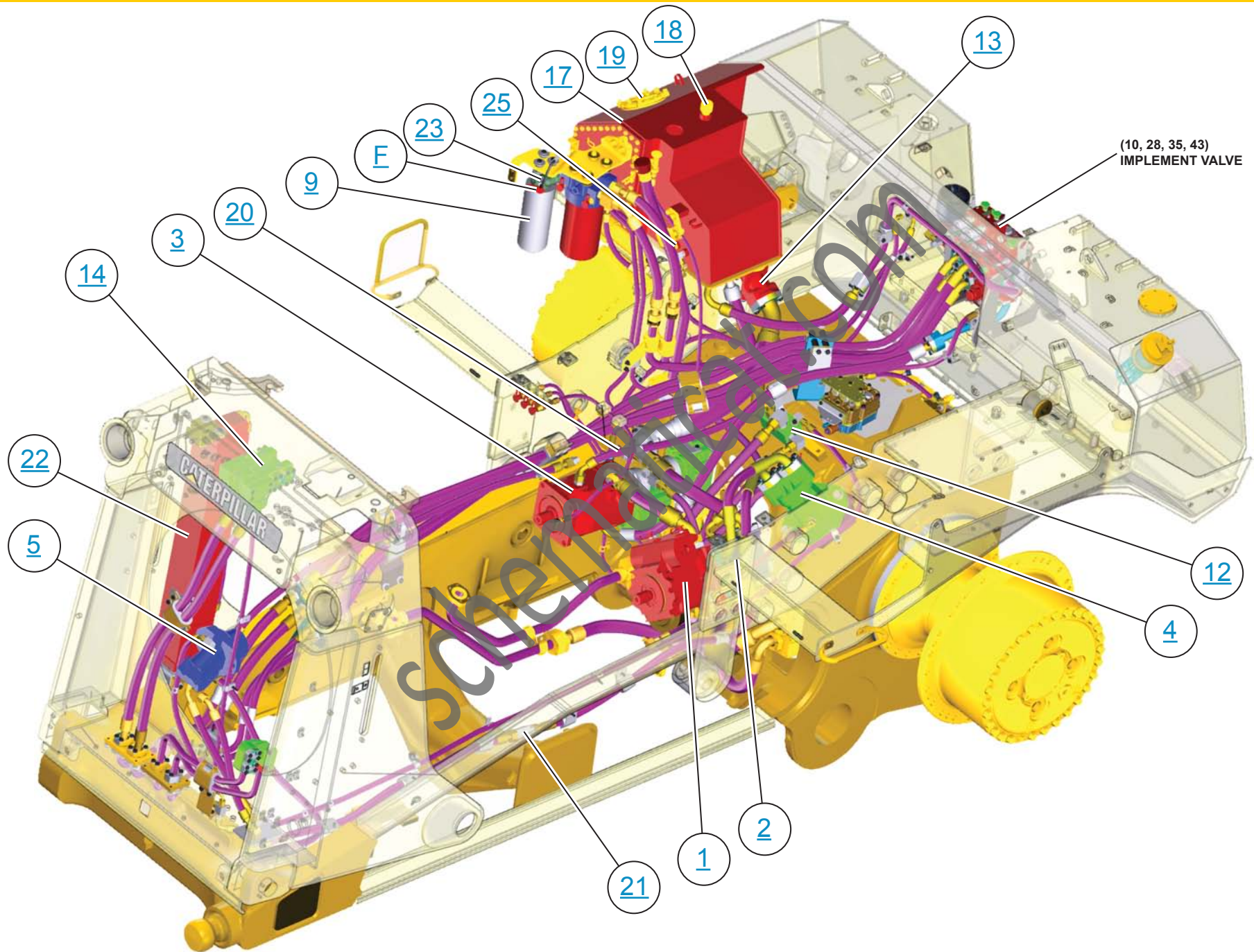
Pressure Line	Blue
Pilot Pump Output	Red
Flow Control Valve	Green
Relief Valve	Orange
Supply Line	Yellow
Return Line	Light Blue
Drain Return Line	Light Green
Temp. Output (Non-Steering)	Light Purple
Temp. Output (Steering)	Light Blue
Temp. Output (Pilot)	Light Green
Temp. Output (Fan)	Light Purple
Temp. Output (Cooler)	Light Blue
Temp. Output (Heat Exchanger)	Light Green
Temp. Output (Fan)	Light Purple
Temp. Output (Cooler)	Light Blue
Temp. Output (Heat Exchanger)	Light Green

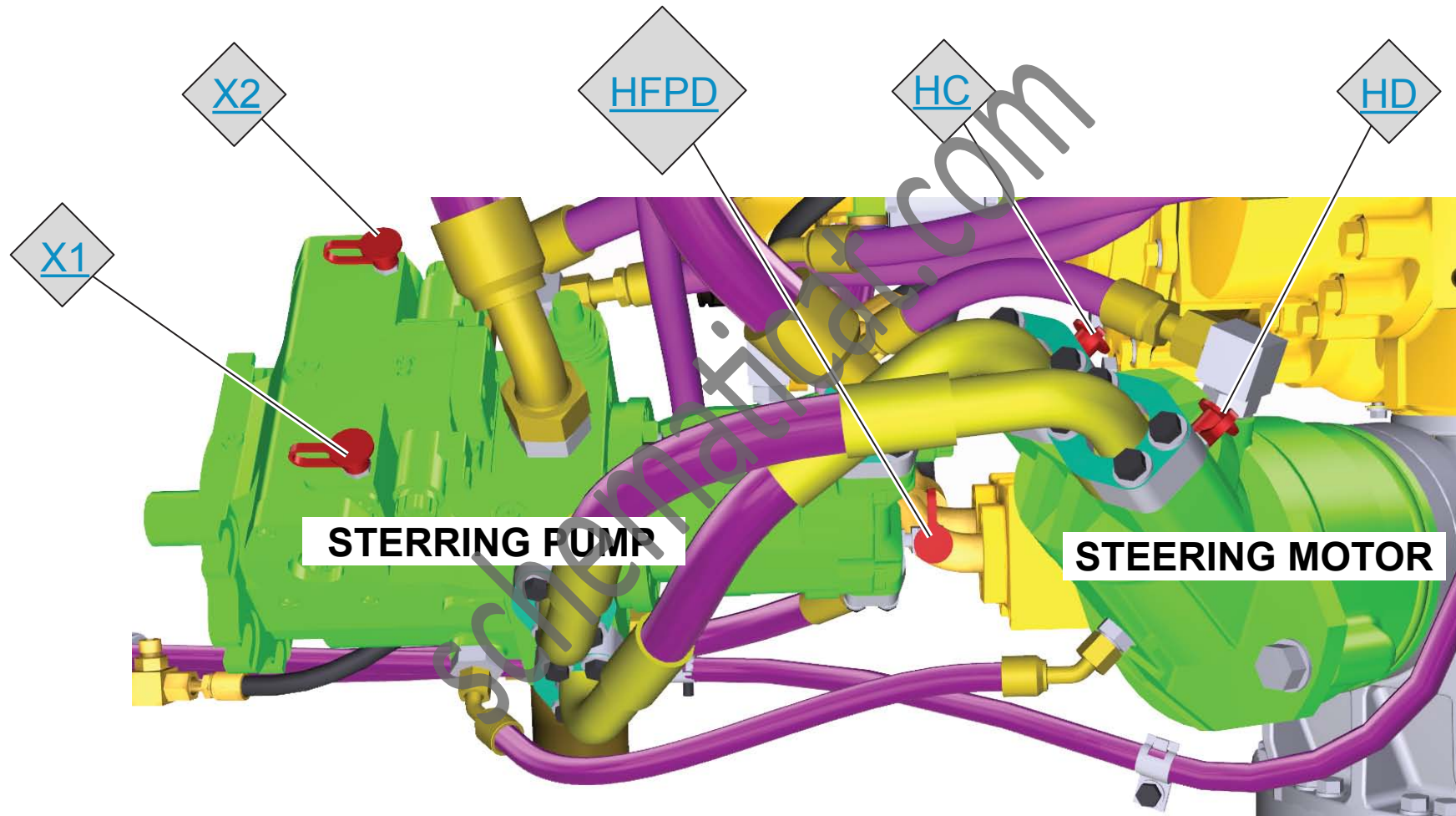
LINE PATTERNS

Pressure Line	Solid Line
Pilot / Load Sensing Pressure	Dashed Line
Drain / Return Lines	Dotted Line
Component Group	Line with Circles
Attachment	Line with Triangles
Air Line	Line with Squares

THIS SCHEMATIC IS FOR THE DBT TRACK-TYPE TRACTOR HYDRAULIC SYSTEM
 MEDIA NUMBER: KENR8931-02
 SCHEMATIC PART NUMBER: 331-4754, CHANGE: 03
 Components are shown installed on a fully operable machine with the key and engine off. Transmission shift in neutral and with parking brake set.
 Refer to the appropriate Service Manual for Troubleshooting, Specifications and System Operation.
 Refer to the Parts Manual using a specific serial number prefix in SIS before ordering parts from this schematic.

MACHINE COMPONENT LOCATIONS



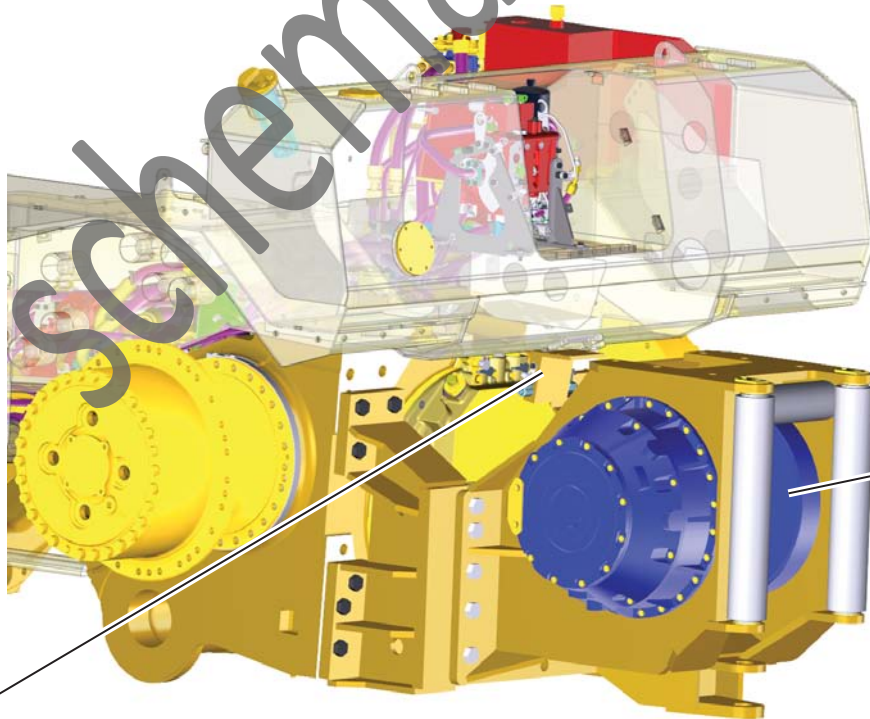


STERRING PUMP

STEERING MOTOR

TOP DOWN VIEW

RIPPER AND WINCH



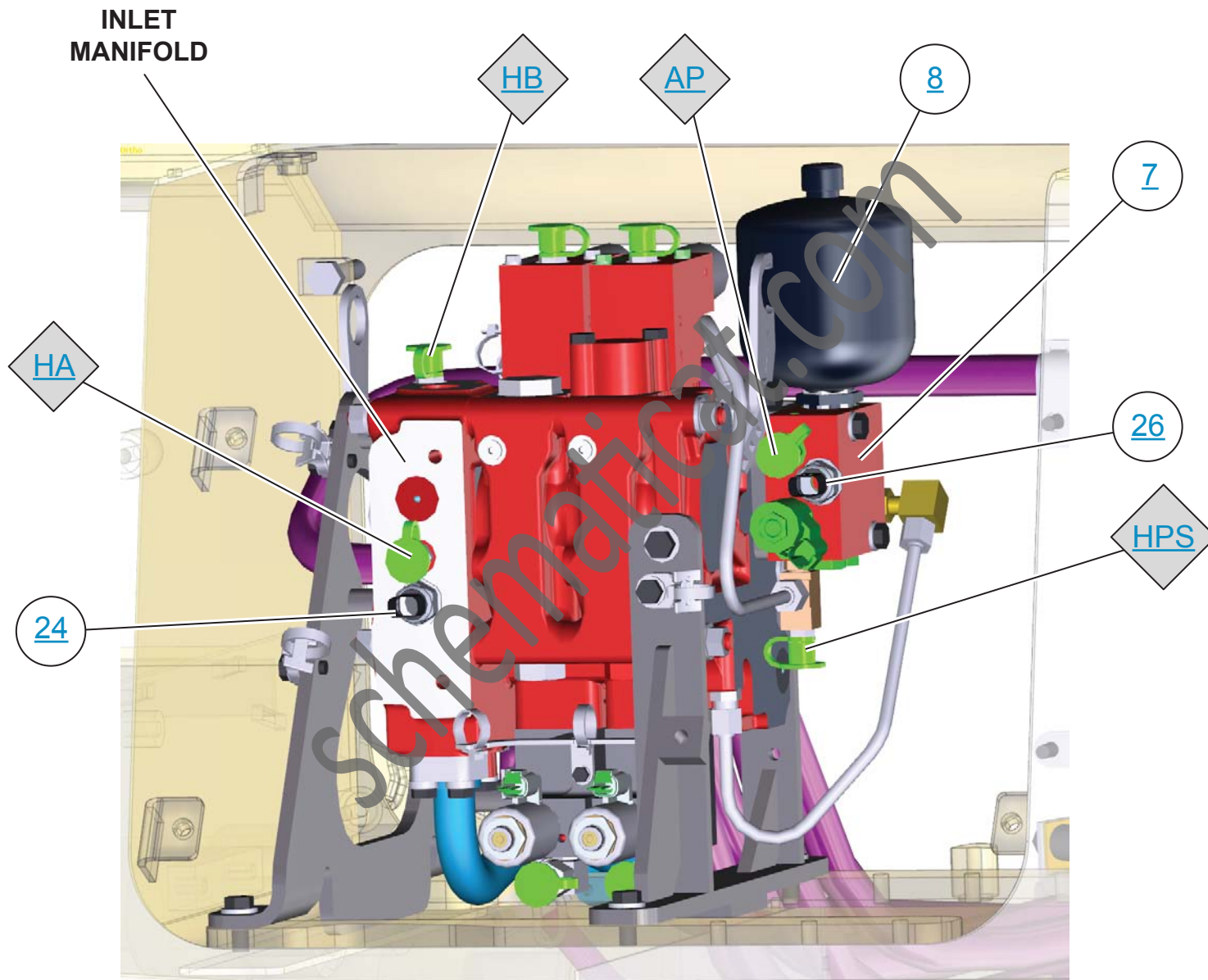
44

45

15



IMPLEMENT VALVE (W/SHUTOFF VALVE VIEW)



2 BANK VALVE SHOWN.
View with rear access cover removed.

