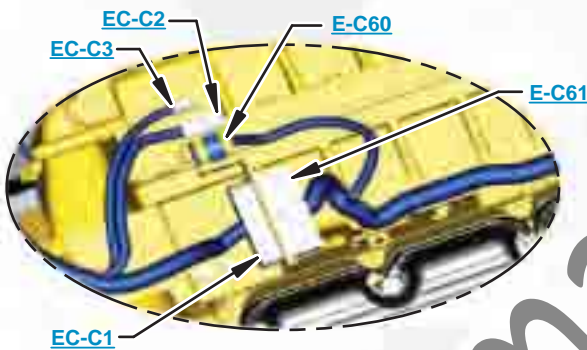




***This document is best viewed at a screen resolution of 1024 X 768.***

To set your screen resolution do the following:  
**RIGHT CLICK** on the **DESKTOP**.  
 Select **PROPERTIES**.  
**CLICK** the **SETTINGS TAB**.  
**MOVE THE SLIDER** under **SCREEN RESOLUTION** until it shows **1024 X 768**.  
**CLICK OK** to apply the resolution.

The Bookmarks panel will allow you to quickly navigate to points of interest.



Click on any text that is BLUE and underlined. These are hyperlinks that can be used to navigate the schematic and machine views.

**VIEW ALL CALLOUTS**

When only one callout is showing on a machine view this button will make all of the callouts visible. This button is located in the top right corner of every machine view page.

HOTKEYS (Keyboard Shortcuts)		
	FUNCTION	KEYS
	Zoom In	"CTRL" / "+"
	Zoom Out	"CTRL" / "-"
	Fit to Page	"CTRL" / "0" (zero)
	Hand Tool	"SPACEBAR" (hold down)
	Find	"CTRL" / "F"



# Schematic

---

## **D8T2 Track-Type Tractor Hydraulic System**

---

MLN1500-UP  
FCT1013-UP

SchematicCat.com

# COMPONENT LOCATION

Page 1 of 2



Description	Part Number	Machine Location	Schematic Location
Accumulator Gp - Pilot Oil (Charged)	200-0750	<a href="#">H-3</a>	<a href="#">1</a>
Core As - Hydraulic Oil Cooler	334-3321	<a href="#">H-1</a>	<a href="#">2</a>
Cover - 2 Bank	344-9058	<a href="#">H-5</a>	<a href="#">3</a>
Cylinder Gp - Lift	250-5861	<a href="#">J-6</a>	<a href="#">4</a>
Cylinder Gp - Tilt	240-7347	<a href="#">J-5</a>	<a href="#">5</a>
Filter Element As - Temperature (Hydraulic Oil)	1R-0777	<a href="#">B-2</a>	<a href="#">6</a>
Filter Gp - Oil (Steering Charge)	341-1330	<a href="#">G-3</a>	<a href="#">7</a>
Manifold - Return	247-7788	<a href="#">C-5</a>	<a href="#">8</a>
Manifold - Suction	236-4540	<a href="#">B-4</a>	<a href="#">9</a>
Manifold - Suction Gallery	209-1392	<a href="#">D-6</a>	<a href="#">10</a>
Manifold Gp - Control (Pilot Shutoff)	341-9000	<a href="#">H-4</a>	<a href="#">11</a>
Manifold Gp - Valve (Dozer)	351-3626	<a href="#">H-7</a>	<a href="#">12</a>
Motor Gp - Piston (Hydraulic Fan)	205-1821	<a href="#">H-2</a>	<a href="#">13</a>
Motor Gp - Piston (Steering)	252-5127	<a href="#">F-5</a>	<a href="#">14</a>
Pump Gp - Piston (Hydraulic Fan)	325-9789	<a href="#">F-2</a>	<a href="#">15</a>
Pump Gp - Piston (Implement)	214-1091	<a href="#">E-6</a>	<a href="#">16</a>
Pump Gp - Piston (Steering)	325-9788	<a href="#">F-3</a>	<a href="#">17</a>
Sensor Gp - Pressure (Implement)	296-5270	<a href="#">I-6</a>	<a href="#">18</a>
Sensor Gp - Pressure (steering)	320-3064	<a href="#">H-3</a>	<a href="#">19</a>
Sensor Gp - Speed (Steering Motor)	358-2399	<a href="#">F-5</a>	<a href="#">20*</a>
Sensor Gp - Temperature (Hydraulic Oil)	256-6453	<a href="#">C-3</a>	<a href="#">21</a>
Switch Gp - Pressure (Steering Charge)	227-6744	<a href="#">G-3</a>	<a href="#">22</a>
Tank and Mounting Gp - Temperature (Hyd Oil)	341-3446	<a href="#">B-3</a>	<a href="#">23</a>
Valve - Breaker Relief	116-2810	<a href="#">C-3</a>	<a href="#">24</a>
Valve As - Control (Cooler)	360-5604	<a href="#">H-2</a>	<a href="#">25</a>
Valve As - Cooler Bypass	4E-1437	<a href="#">I-2</a>	<a href="#">26</a>
Valve Gp - 2 Bank	336-5703	<a href="#">H-5</a>	<a href="#">27</a>
Valve Gp - Control (Lift)	337-5710	<a href="#">H-6</a>	<a href="#">28</a>
Valve Gp - Control (Tilt)	347-3828	<a href="#">H-5</a>	<a href="#">29</a>
Valve Gp - Quick Drop (Blade)	340-2788	<a href="#">I-6</a>	<a href="#">30</a>
Valve Gp - Relief (Steering Charge)	198-9220	<a href="#">E-6</a>	<a href="#">31</a>
<b>Attachments</b>			
Cylinder Gp - Tilt	6E-0397	<a href="#">B-16</a>	<a href="#">32</a>
Cylinder Gp - Dual Tilt	347-3272	<a href="#">A-14, C-14</a>	<a href="#">33</a>
Cylinder Gp - Lift	222-1222	<a href="#">C-10</a>	<a href="#">34</a>
Manifold and Solenoid Gp - Control (Low Fan Speed)	419-6213	<a href="#">B-11</a>	<a href="#">35</a>
Valve Gp - Dual Tilt	217-4326	<a href="#">B-14</a>	<a href="#">36</a>
Valve Gp - Fan Reversing	162-2191	<a href="#">B-8</a>	<a href="#">37</a>

Note \* - Components Not Shown

# COMPONENT LOCATION

Page 2 of 2



Description	Part Number	Machine Location	Schematic Location
<b>Ripper</b>			
Valve Gp - 4 Bank Dozer, Ripper	336-5705	<a href="#">H-12</a>	<a href="#">38</a>
Cover - 4 Bank	344-9058	<a href="#">G-12</a>	<a href="#">39</a>
Cylinder Gp - Ripper Lift	155-3653	<a href="#">I-13</a>	<a href="#">40</a>
Cylinder Gp - Ripper Pin Puller	6E-3113	<a href="#">B-12</a>	<a href="#">41</a>
Cylinder Gp - Ripper Tip (Left)	155-3652	<a href="#">I-13</a>	<a href="#">42</a>
Cylinder Gp - Ripper Tip (Right)	165-0102	<a href="#">I-12</a>	<a href="#">43</a>
Manifold - Ripper Cylinder Supply and Return	211-9491	<a href="#">I-13</a>	<a href="#">44</a>
Manifold Gp - Ripper Inlet	351-3626	<a href="#">H-16</a>	<a href="#">45</a>
Valve and Mounting Gp - Control (Hyd Pin Puller)	188-6140	<a href="#">B-12</a>	<a href="#">46</a>
Valve Gp - Control (Dozer Lift)	336-5710	<a href="#">H-15</a>	<a href="#">47</a>
Valve Gp - Control (Dozer Tilt)	362-3309	<a href="#">H-14</a>	<a href="#">48</a>
Valve Gp - Control (Ripper Lift)	362-3310	<a href="#">H-13</a>	<a href="#">49</a>
Valve Gp - Control (Ripper Tilt)	364-8041	<a href="#">H-13</a>	<a href="#">50</a>
<b>Winch</b>			
Valve Gp - 3 Bank Dozer, Winch	336-5704	<a href="#">G-10</a>	<a href="#">51</a>
Cover - 3 Bank	344-9058	<a href="#">G-8</a>	<a href="#">52</a>
Manifold Gp - Hydraulic	191-1443	<a href="#">I-10</a>	<a href="#">53</a>
Valve Gp - Control (Dozer Lift)	336-5710	<a href="#">G-10</a>	<a href="#">54</a>
Valve Gp - Control (Dozer Tilt)	362-3309	<a href="#">G-9</a>	<a href="#">55</a>
Valve Gp - Control (Winch)	347-3830	<a href="#">G-8</a>	<a href="#">56</a>
Winch Ar - Paccar Winch Unit	216-9006	<a href="#">I-10</a>	<a href="#">57</a>
<b>5 Bank With 3 Function Rear Auxiliary Valve</b>			
Valve Gp - 5 Bank Dozer, Towed Implement	336-5706	<a href="#">E-13</a>	<a href="#">58</a>
Cover - Valve End	344-9058	<a href="#">E-8</a>	<a href="#">59</a>
Manifold Gp - Rear Auxiliary Input	351-3626	<a href="#">E-13</a>	<a href="#">60</a>
Valve Gp - Control (Dozer Lift)	336-5710	<a href="#">E-12</a>	<a href="#">61</a>
Valve Gp - Control (Dozer Tilt)	362-3309	<a href="#">E-11</a>	<a href="#">62</a>
Valve Gp - Control (Towed Implement) 1	362-3312	<a href="#">E-10</a>	<a href="#">63</a>
Valve Gp - Control (Towed Implement) 2	347-3831	<a href="#">E-9</a>	<a href="#">64</a>

# TAP LOCATION



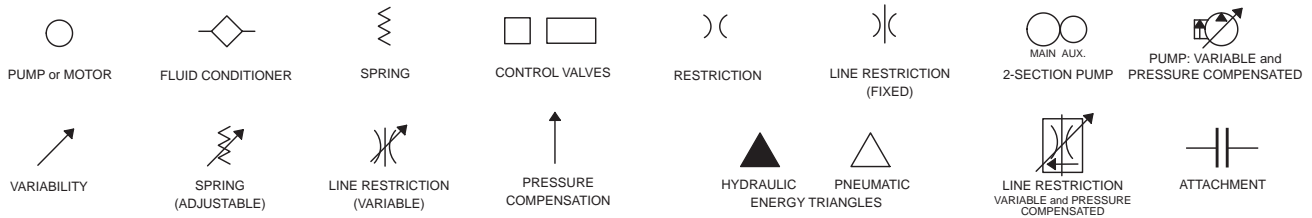
Tap Number	Description	Schematic Location
<a href="#">HA*</a>	Implement Pump Discharge	<a href="#">I-7, H-16, H-11, E-13</a>
<a href="#">HB*</a>	Implement Pump Signal	<a href="#">I-7, H-16, H-11, E-13</a>
<a href="#">HPDL*</a>	Hydraulic Pilot Dozer Lower	<a href="#">I-6, H-15, H-10, E-12</a>
<a href="#">HPTR*</a>	Hydraulic Pilot Tilt Right	<a href="#">I-5, H-14, H-9, E-11</a>
<a href="#">HPDR*</a>	Hydraulic Pilot Dozer Raise	<a href="#">G-6, H-10, D-12, G-15</a>
<a href="#">HPTL*</a>	Hydraulic Pilot Tilt Left	<a href="#">G-5, G-14, F-9, D-11</a>
<a href="#">HD</a>	Right Steer Loop Pressure	<a href="#">F-5</a>
<a href="#">HC</a>	Left Steer Loop Pressure	<a href="#">E-5</a>
<a href="#">X1</a>	Left steer pressure	<a href="#">E-3</a>
<a href="#">X2</a>	Right steer pressure	<a href="#">E-3</a>
<a href="#">HPS</a>	Pilot Supply	<a href="#">H-4</a>
<a href="#">AP</a>	Accumulator Pressure	<a href="#">H-3</a>
<a href="#">E</a>	Charge Pump Pressure (SOS)	<a href="#">G-3</a>
<a href="#">HFPD</a>	Fan Pump Discharge	<a href="#">F-2</a>
<a href="#">HPRR</a>	Pilot Ripper Raise	<a href="#">H-13</a>
<a href="#">HPRI</a>	Pilot Ripper In	<a href="#">H-13</a>
<a href="#">HPRL</a>	Pilot Ripper Lower	<a href="#">G-13</a>
<a href="#">HPRO</a>	Pilot Ripper Out	<a href="#">G-13</a>
<a href="#">HPAB</a>	Pilot Rear Auxiliary B Port	<a href="#">F-10</a>
<a href="#">HPAD</a>	Pilot Rear Auxiliary D Port	<a href="#">F-10</a>
<a href="#">HPAA</a>	Pilot Rear Auxiliary A Port	<a href="#">D-10</a>
<a href="#">HPAC</a>	Pilot Rear Auxiliary C Port	<a href="#">D-10</a>
<a href="#">HPAF</a>	Pilot Rear Auxiliary F Port	<a href="#">F-9</a>
<a href="#">HPAE</a>	Pilot Rear Auxiliary E Port	<a href="#">D-9</a>
<a href="#">HPWRO</a>	Winch Reel Out	<a href="#">H-8</a>
<a href="#">HPWRI</a>	Winch Reel In	<a href="#">F-8</a>

\* The following taps appear on each implement valve: HA, HB, HPDL, HPDR, HPTR and HPTL

# FLUID POWER SYMBOLS



## BASIC COMPONENT SYMBOLS



## VALVE ENVELOPES

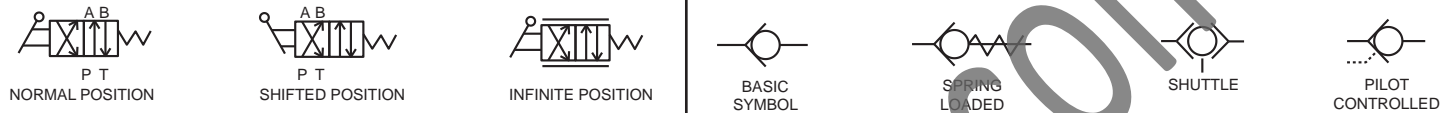
## VALVES

## VALVE PORTS



## CONTROL VALVES

## CHECK VALVES



## FLUID STORAGE RESERVOIRS



## MEASUREMENT

## ROTATING SHAFTS



## COMBINATION CONTROLS



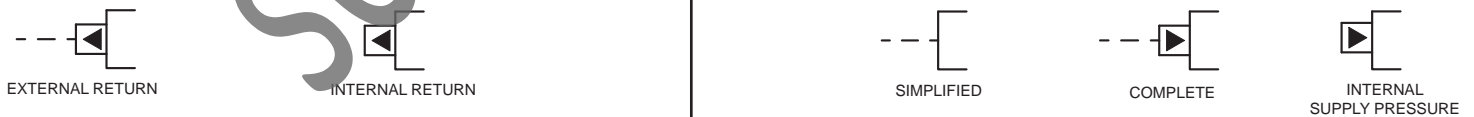
## MANUAL CONTROL SYMBOLS



## RELEASED PRESSURE

## PILOT CONTROL SYMBOLS

## REMOTE SUPPLY PRESSURE



## ACCUMULATORS

## CROSSING AND JOINING LINES

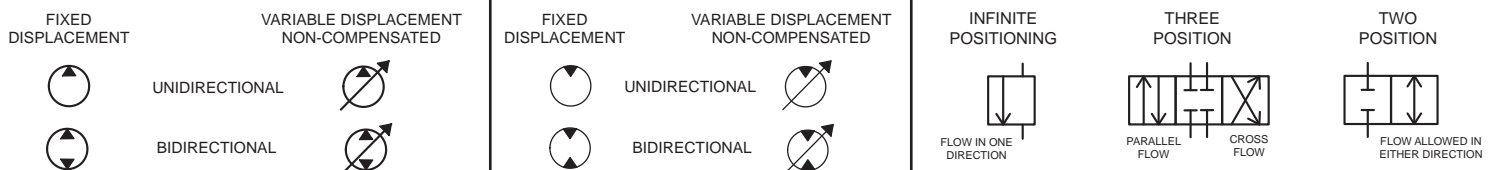
## HYDRAULIC AND PNEUMATIC CYLINDERS



## HYDRAULIC PUMPS

## HYDRAULIC MOTORS

## INTERNAL PASSAGEWAYS



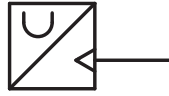
# ELECTRICAL SYMBOLS



## Hydraulic Symbols (Electrical)



Transducer  
(Fluid)



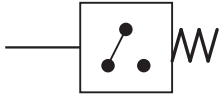
Transducer  
(Gas / Air)



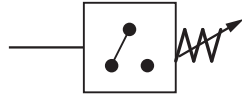
Generator



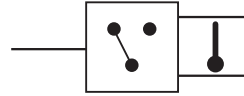
Electric Motor



Pressure Switch



Pressure Switch  
(Adjustable)

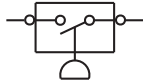


Temperature Switch

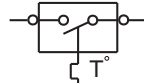


Electrical Wire

## Electrical Symbols (Electrical)



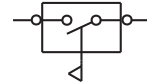
Pressure  
Symbol



Temperature  
Symbol



Level  
Symbol

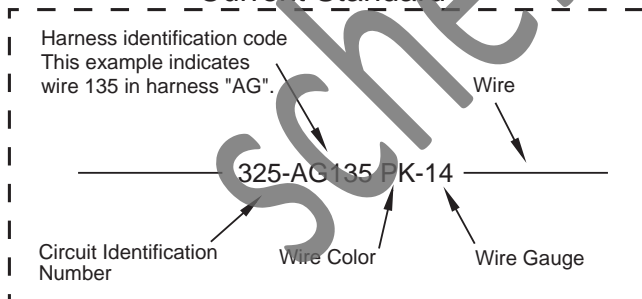


Flow  
Symbol

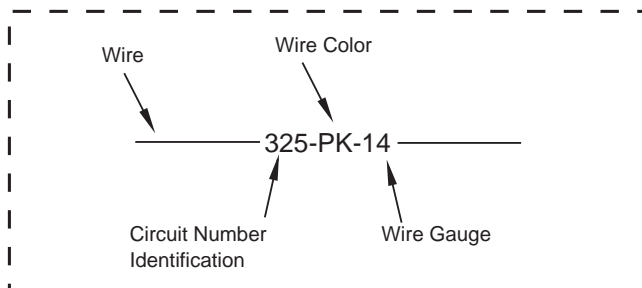
## Wire Number Identification Codes

### Electrical Schematic Example

#### Current Standard

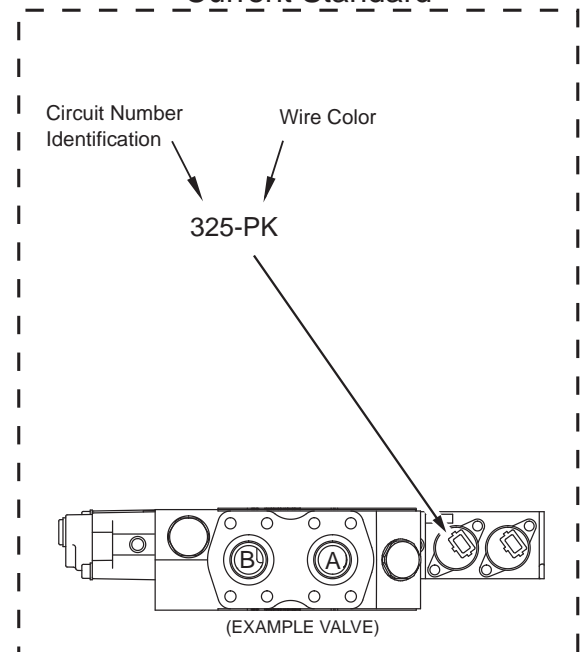


#### Previous Standard

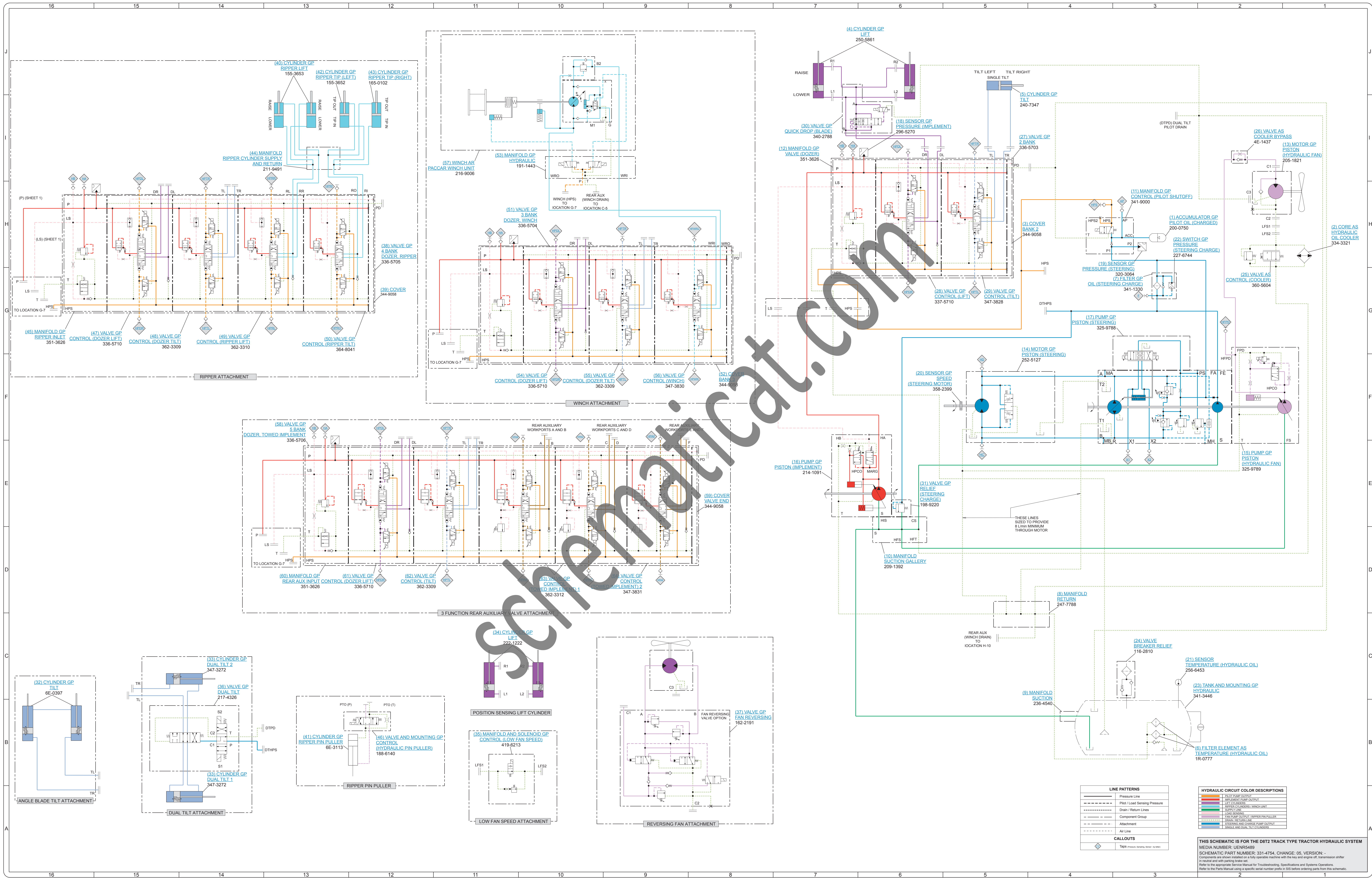


### Hydraulic Schematic Example

#### Current Standard







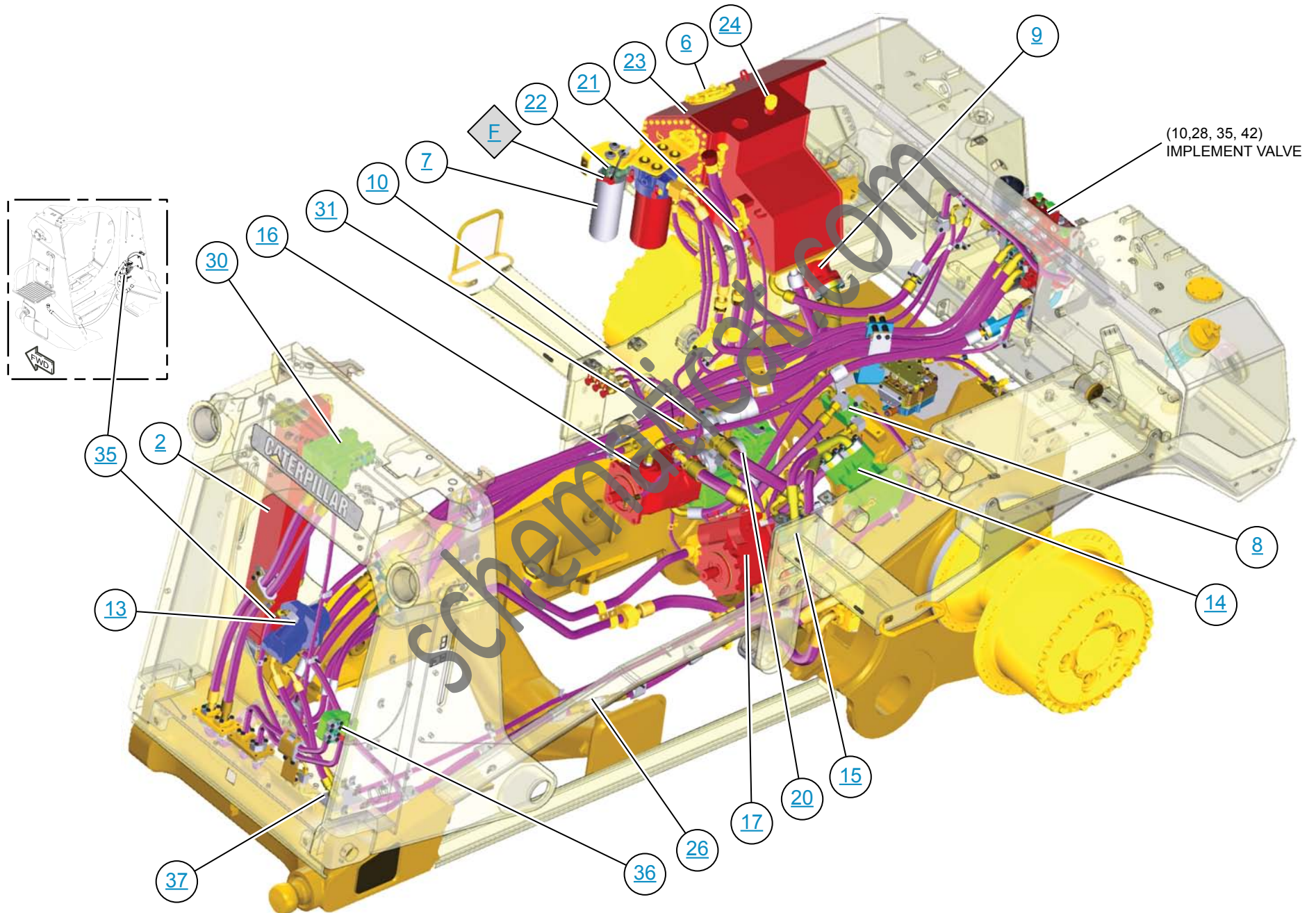
LINE PATTERNS	
	Pressure Line
	Pilot / Load Sensing Pressure
	Drain / Return Lines
	Component Group
	Attachment
	Air Line
CALLOUTS	
	Tip (Pressure Sensing Sensor, as noted)

HYDRAULIC CIRCUIT COLOR DESCRIPTIONS	
	STEERING PUMP OUTPUT
	IMPLEMENT CLAMP OUTPUT
	DOZER CYLINDERS
	DOZER CYLINDERS / WINCH UNIT
	DOZER TILT
	DOZER LIFT
	DOZER LIFT / RIPPER PIN PULLER
	DOZER LIFT / RIPPER PIN PULLER
	STEERING AND CHARGE PUMP OUTPUT
	STEERING AND CHARGE PUMP OUTPUT

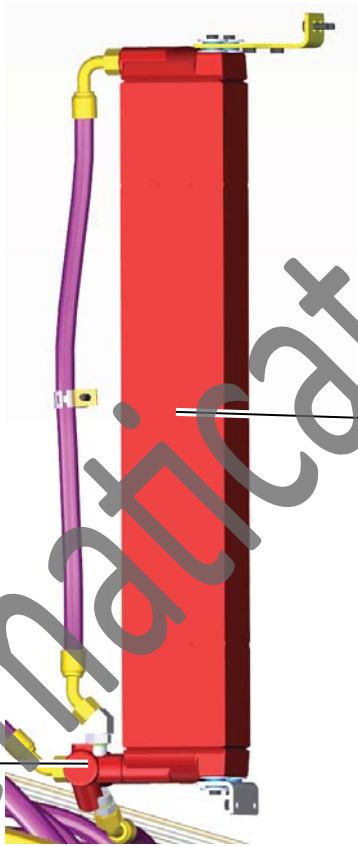
THIS SCHEMATIC IS FOR THE D8T2 TRACK TYPE TRACTOR HYDRAULIC SYSTEM  
 MEDIA NUMBER: UENR5489  
 SCHEMATIC PART NUMBER: 331-4754, CHANGE: 05, VERSION: 1  
 Components are shown installed on a fully equipped machine with the top and engine off, transmission in neutral and with parking brake set.  
 Refer to the appropriate Service Manual for Troubleshooting, Specifications and Systems Operations.  
 Refer to the Parts Manual using a specific serial number prefix in SSI before ordering parts from this schematic.



# MACHINE VIEW

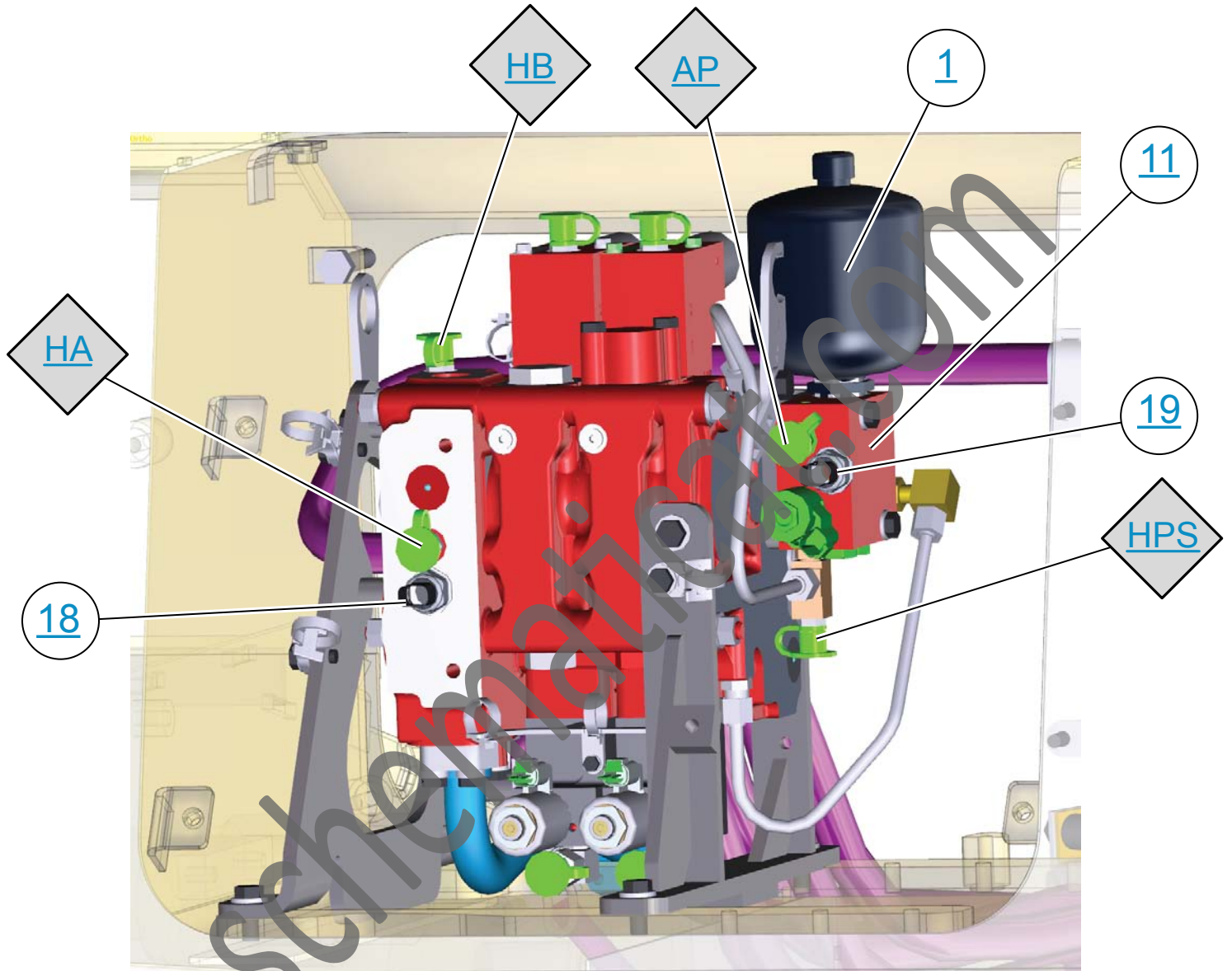


# HYDRAULIC OIL COOLER



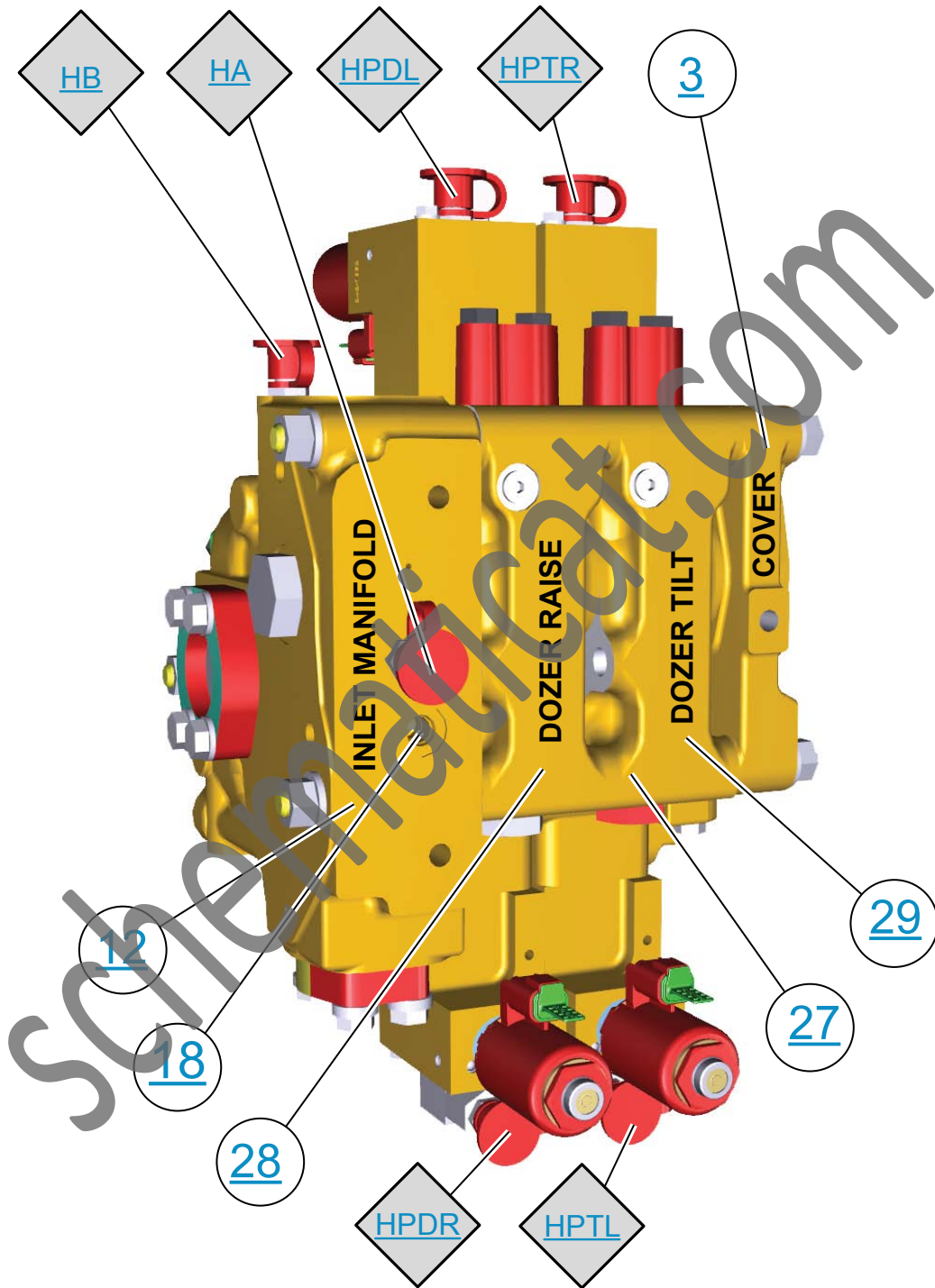
SchematicCat.com

# IMPLEMENT VALVE (W/SHUTOFF VALVE VIEW)



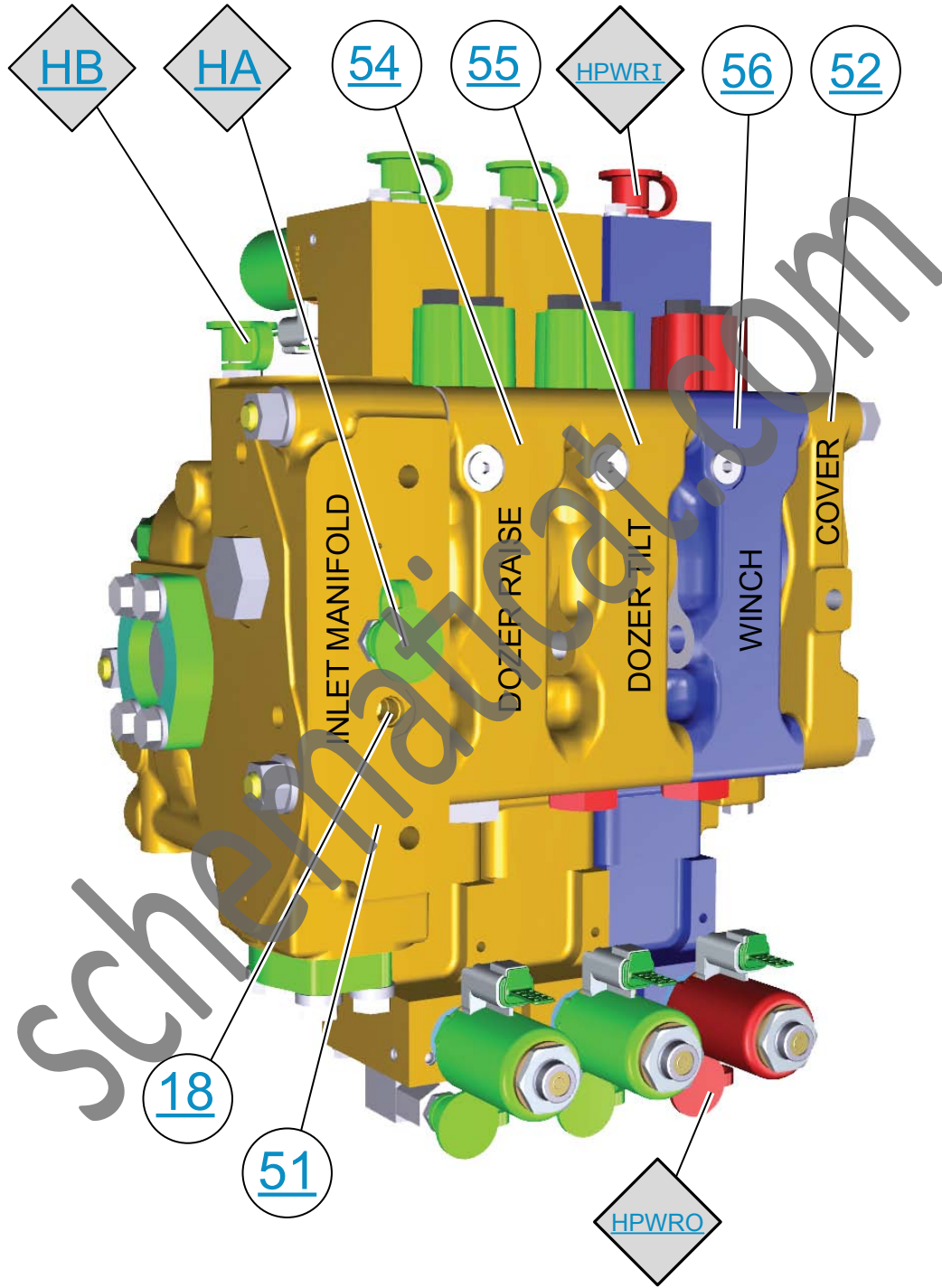
**2 BANK VALVE SHOWN.**  
View with rear access cover removed.

# IMPLEMENT VALVES - 2 BANK(336-5703)

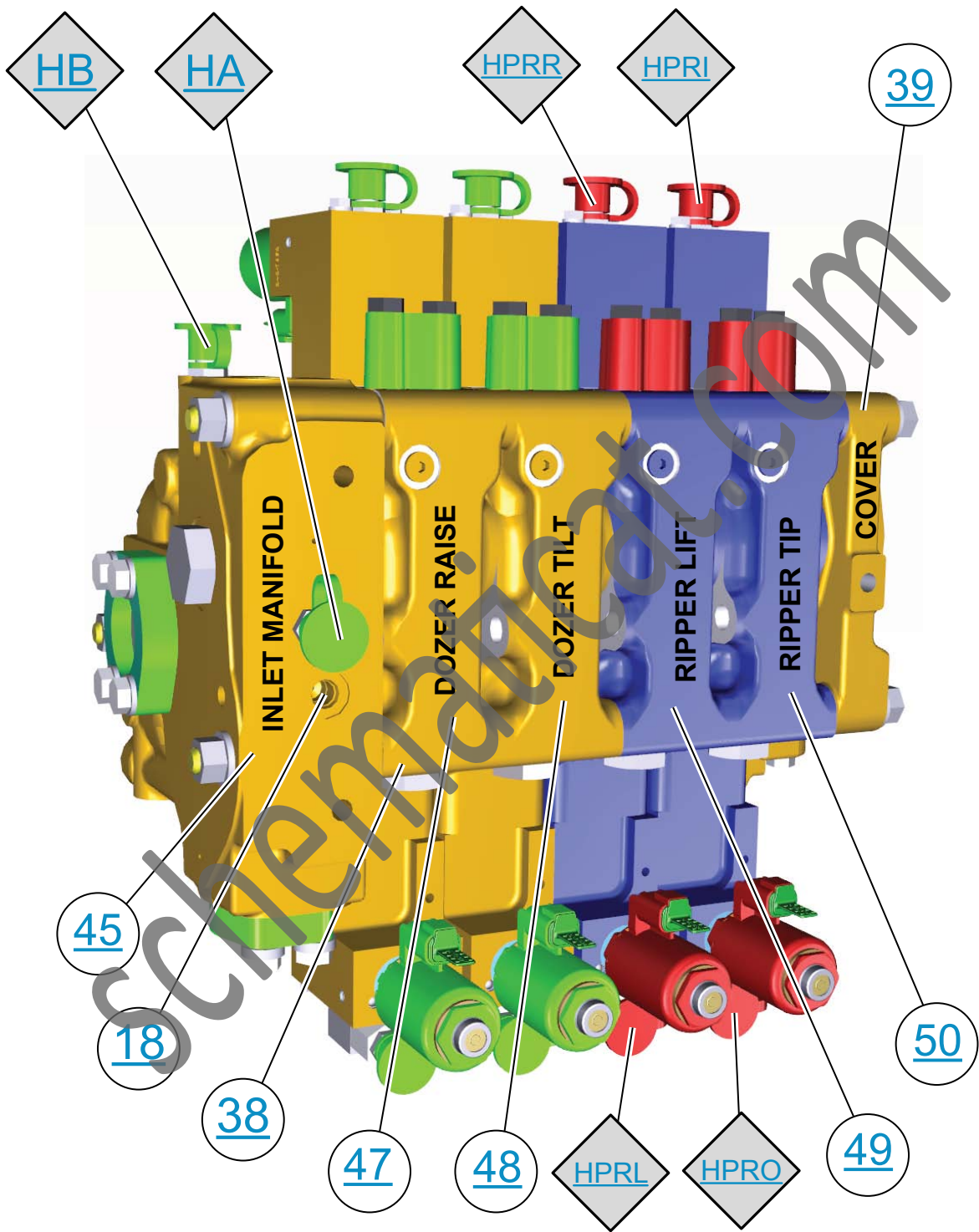




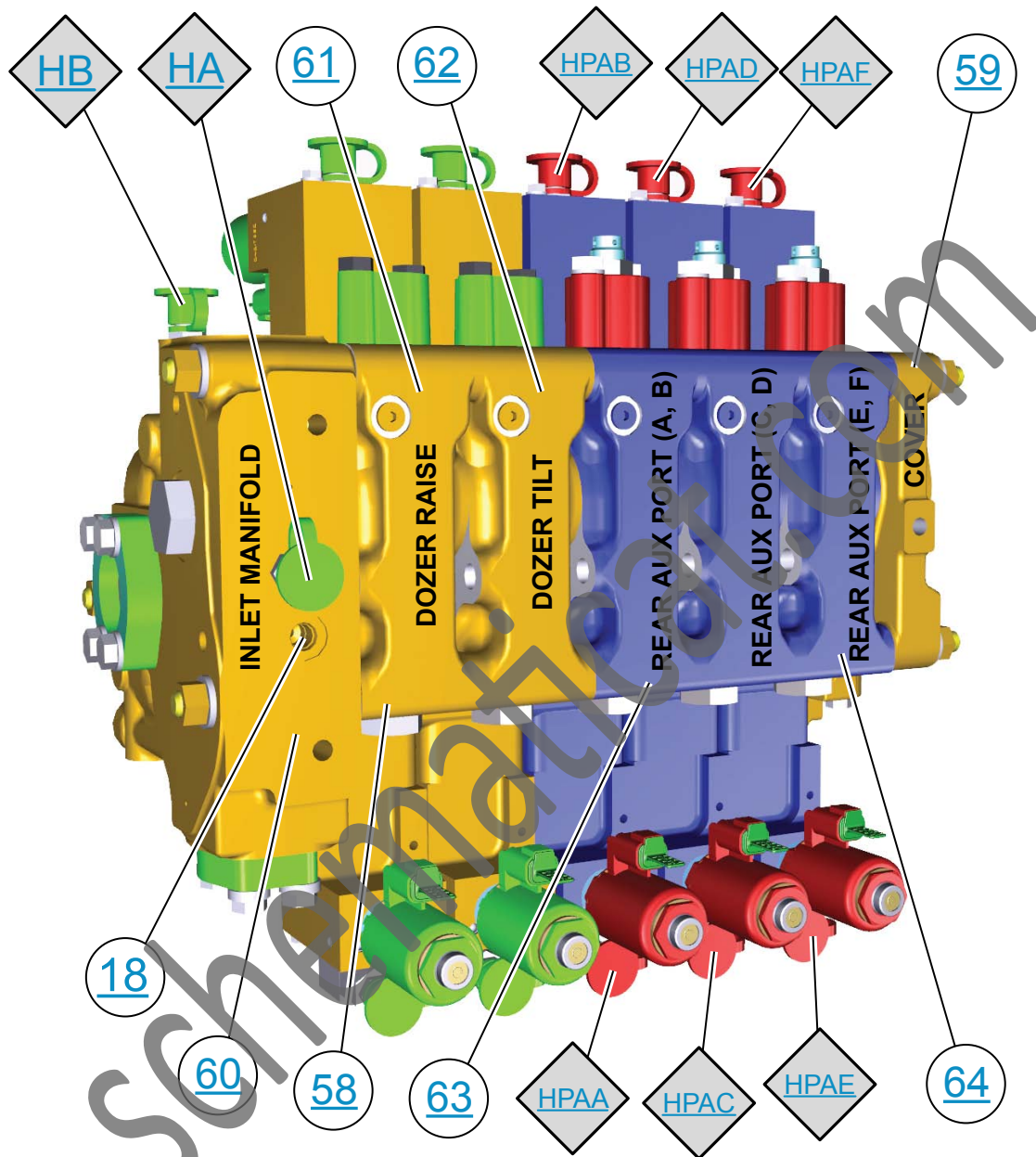
# IMPLEMENT VALVES - 3 BANK(336-5704)



# IMPLEMENT VALVES - 4 BANK(336-5705)



# IMPLEMENT VALVES - 5 BANK(336-5706)





4

34

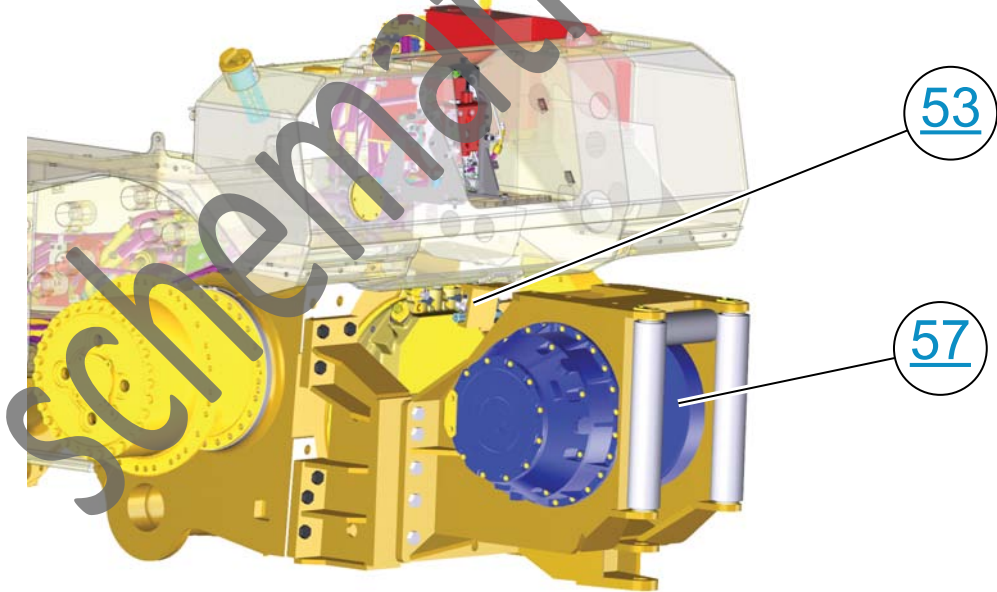
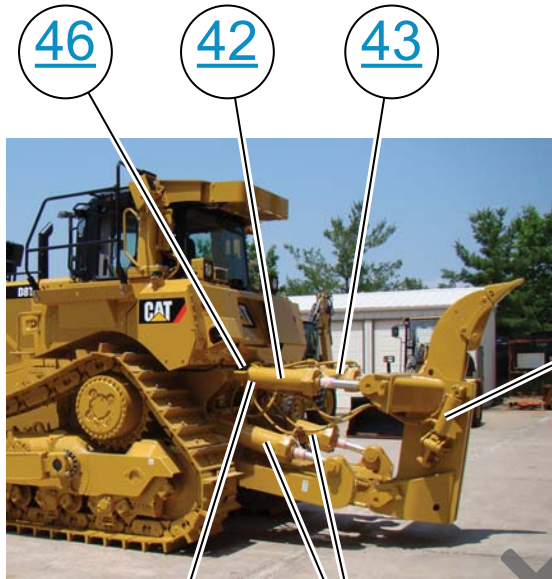
5

32

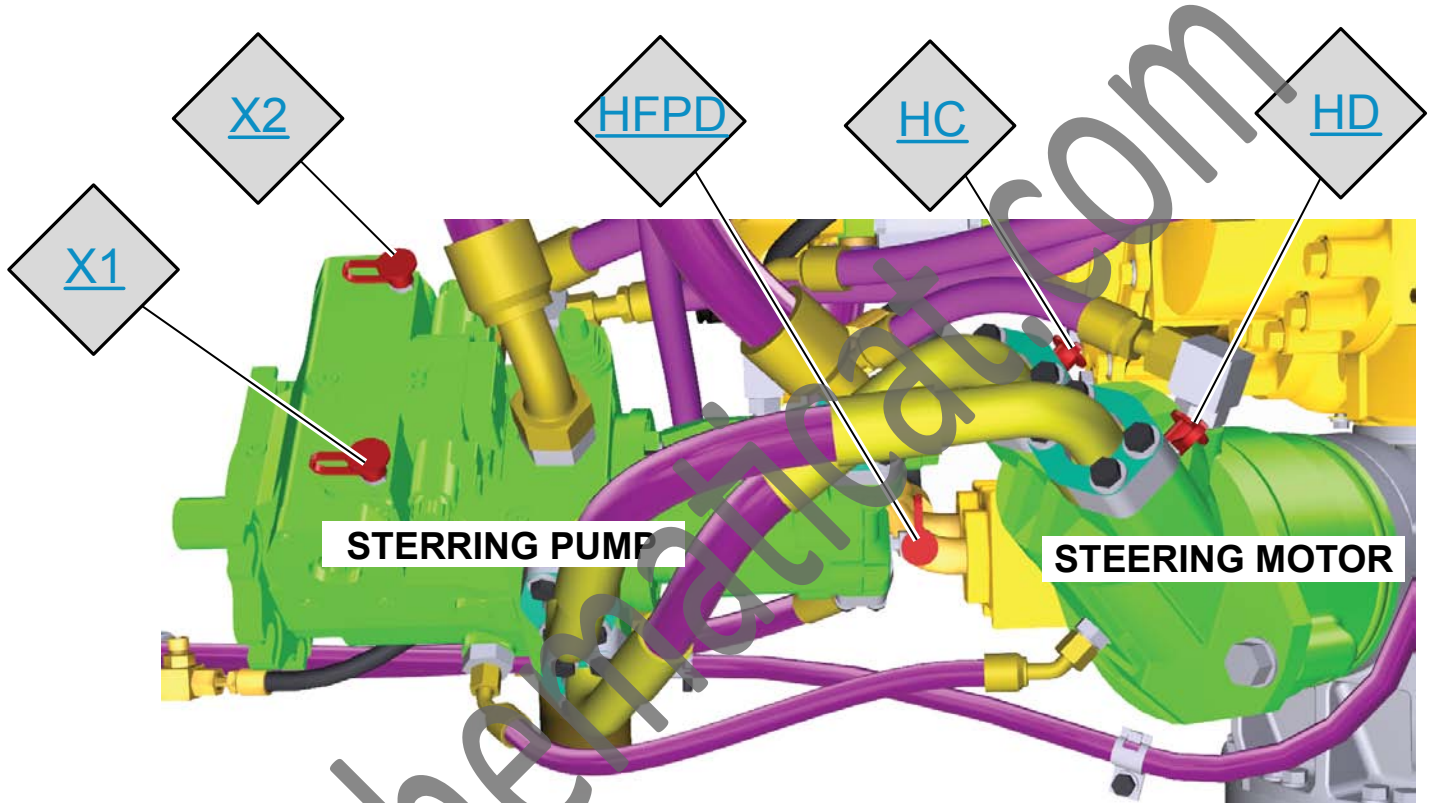
33



# RIPPER AND WINCH



SchematicsCat.com



**TOP DOWN VIEW**