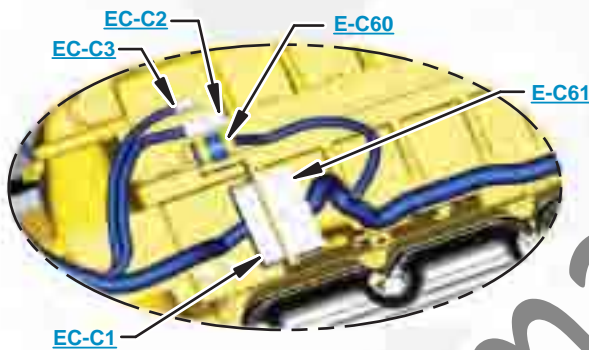




This document is best viewed at a screen resolution of 1024 X 768.

To set your screen resolution do the following:
RIGHT CLICK on the **DESKTOP**.
 Select **PROPERTIES**.
CLICK the **SETTINGS TAB**.
MOVE THE SLIDER under **SCREEN RESOLUTION** until it shows **1024 X 768**.
CLICK OK to apply the resolution.

The Bookmarks panel will allow you to quickly navigate to points of interest.



Click on any text that is BLUE and underlined. These are hyperlinks that can be used to navigate the schematic and machine views.

VIEW ALL CALLOUTS

When only one callout is showing on a machine view this button will make all of the callouts visible. This button is located in the top right corner of every machine view page.

HOTKEYS (Keyboard Shortcuts)		
	FUNCTION	KEYS
	Zoom In	"CTRL" / "+"
	Zoom Out	"CTRL" / "-"
	Fit to Page	"CTRL" / "0" (zero)
	Hand Tool	"SPACEBAR" (hold down)
	Find	"CTRL" / "F"



Schematic

D9R Track-Type Tractor Hydraulic System

ACL1-UP
WDM1-UP

SchematicCat.com

COMPONENT LOCATION



Description	Part Number	Machine Location	Schematic Location
Cylinder Gp (Blade Lift)	165-8633	16	E-2
Cylinder Gp (Blade Tilt)	109-6778	17	C-1
Cylinder Gp (Blade Tilt-RH)	109-8832	18	D-2
Cylinder Gp (Blade Tilt-RH)	109-8833	19	F-2
Cylinder Gp (Pin Puller)	6E-3113	1	E-8
Cylinder Gp (Ripper Lift)	132-5123	20	D-7
Cylinder Gp (Ripper Tilt)	132-5149	21	D-8
Manifold Gp (Inlet Manifold)	6E-4138	3	D-7
Pump Gp (Piston)	104-1752	1	E-3
Tank Gp	163-4153	12	A-4
Valve (Vacuum Breaker)	154-6165	15	B-4
Valve Gp (Blade and Ripper)	187-8636	2	D-7
Valve Gp (Blade Lift)	6E-5138	6	D-5
Valve Gp (Blade Tilt)	6E-4049	7	C-5
Valve Gp (Charging Valve)	4T-1008	5	D-5
Valve Gp (Dual Tilt)	225-2321	14	C-1
Valve Gp (Quick Drop)	6E-4805	13	F-3
Valve Gp (Relief Valve)	6E-4139	4	D-6
Valve Gp (Relief)	116-1895	10	A-5
Valve Gp (Ripper Lift)	6E-4051	8	B-5
Valve Gp (Ripper Tilt)	187-8637	9	B-5

TAP LOCATION



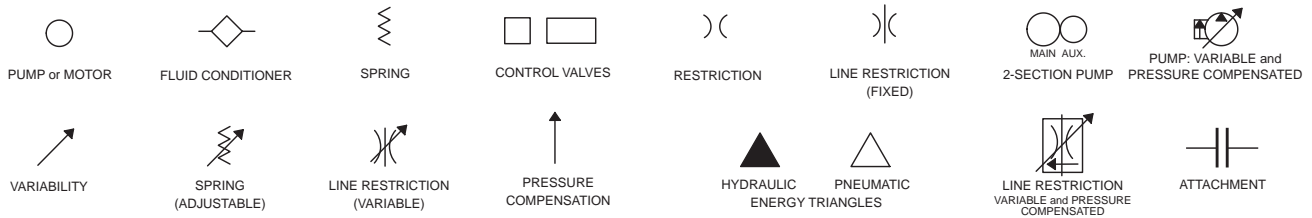
Tap Number	Description	Schematic Location
A	Implement Pump Discharge	E-3
B	Implement Pump Signal	E-4
HA	Implement Pump Discharge (At Valve)	E-7
HB	Implement Pump Signal (At Valve)	E-6
L	Oil Sampling (SOS)	A-3

SchematicCat.com

FLUID POWER SYMBOLS



BASIC COMPONENT SYMBOLS



VALVE ENVELOPES

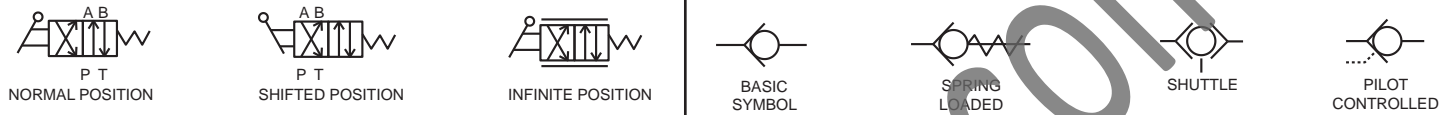
VALVES

VALVE PORTS



CONTROL VALVES

CHECK VALVES



FLUID STORAGE RESERVOIRS



MEASUREMENT

ROTATING SHAFTS



COMBINATION CONTROLS



MANUAL CONTROL SYMBOLS



RELEASED PRESSURE

PILOT CONTROL SYMBOLS

REMOTE SUPPLY PRESSURE



ACCUMULATORS

CROSSING AND JOINING LINES

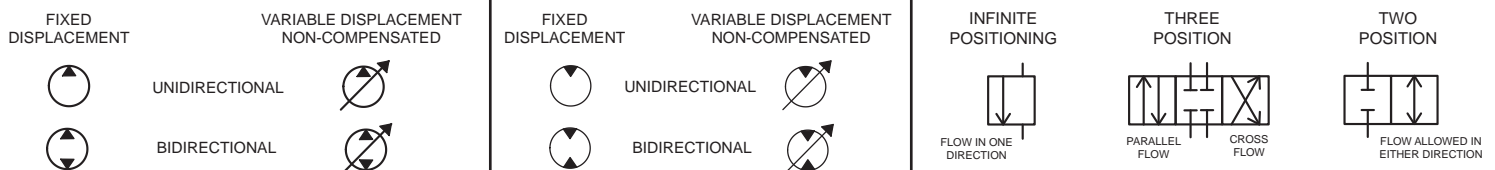
HYDRAULIC AND PNEUMATIC CYLINDERS



HYDRAULIC PUMPS

HYDRAULIC MOTORS

INTERNAL PASSAGEWAYS



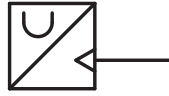
ELECTRICAL SYMBOLS



Hydraulic Symbols (Electrical)



Transducer
(Fluid)



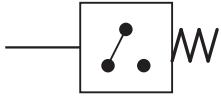
Transducer
(Gas / Air)



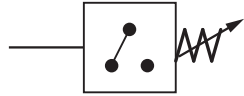
Generator



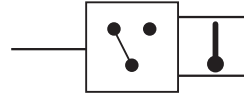
Electric Motor



Pressure Switch



Pressure Switch
(Adjustable)

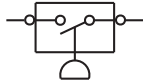


Temperature Switch

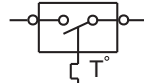


Electrical Wire

Electrical Symbols (Electrical)



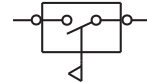
Pressure
Symbol



Temperature
Symbol



Level
Symbol

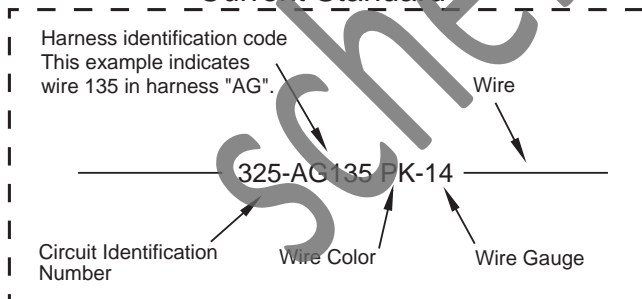


Flow
Symbol

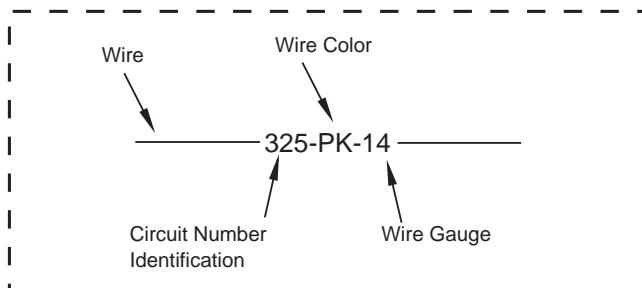
Wire Number Identification Codes

Electrical Schematic Example

Current Standard

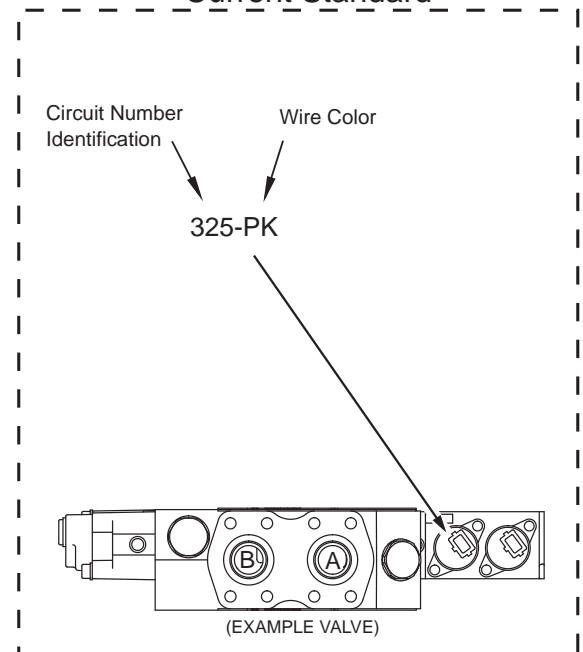


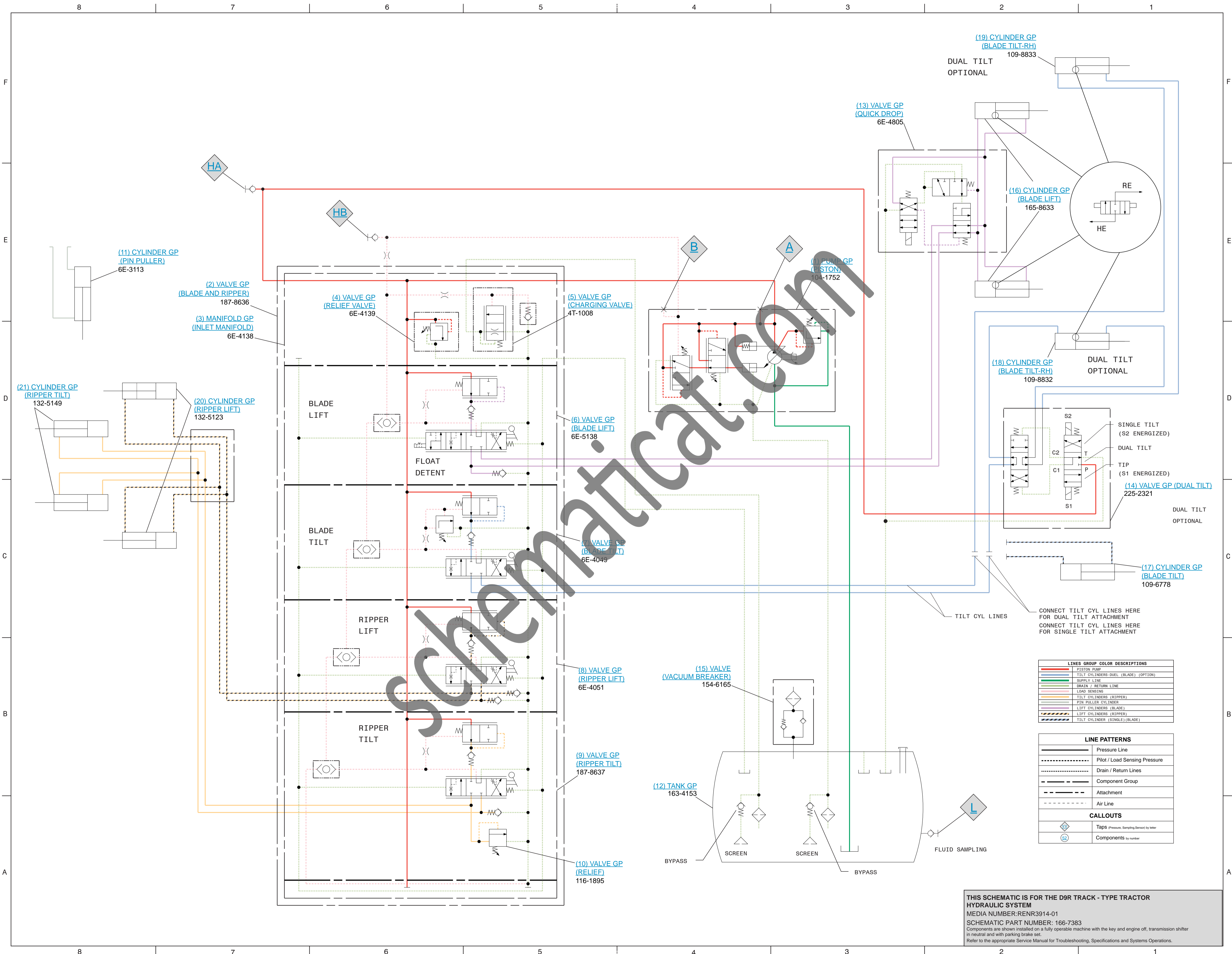
Previous Standard



Hydraulic Schematic Example

Current Standard





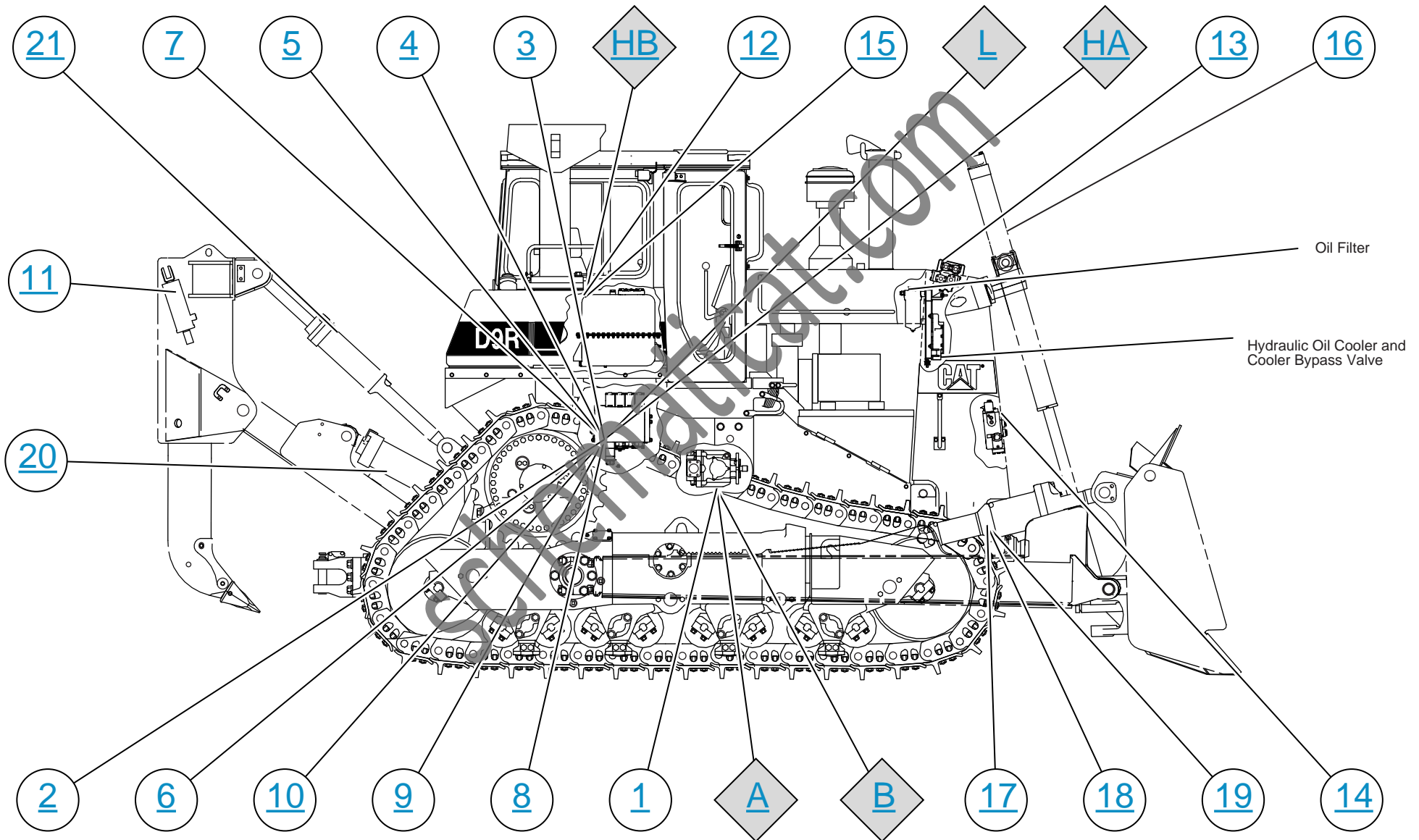
LINES GROUP COLOR DESCRIPTIONS	
[Red Line]	PISTON PUMP
[Blue Line]	TILT CYLINDERS-DUAL (BLADE) (OPTION)
[Green Line]	SUPPLY LINE
[Orange Line]	DRAIN / RETURN LINE
[Yellow Line]	LOAD SENSING
[Purple Line]	TILT CYLINDERS (RIPPER)
[Light Blue Line]	PIN PULLER CYLINDER
[Light Green Line]	LIFT CYLINDERS (BLADE)
[Light Orange Line]	LIFT CYLINDERS (RIPPER)
[Light Purple Line]	TILT CYLINDER (SINGLE) (BLADE)

LINE PATTERNS	
[Solid Line]	Pressure Line
[Dashed Line]	Pilot / Load Sensing Pressure
[Dotted Line]	Drain / Return Lines
[Dash-dot Line]	Component Group
[Long-dash Line]	Attachment
[Short-dash Line]	Air Line

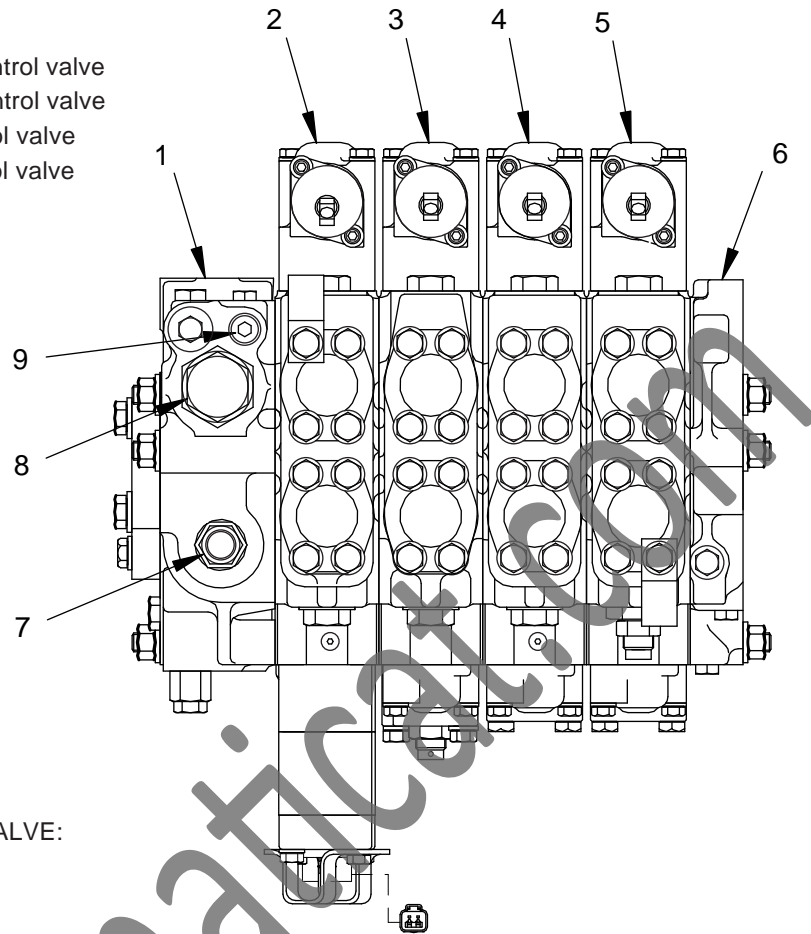
CALLOUTS	
[Diamond with letter]	Taps (Pressure, Sampling, Sensor) by letter
[Circle with number]	Components by number

THIS SCHEMATIC IS FOR THE D9R TRACK - TYPE TRACTOR HYDRAULIC SYSTEM
 MEDIA NUMBER:REN3914-01
 SCHEMATIC PART NUMBER: 166-7383
 Components are shown installed on a fully operable machine with the key and engine off, transmission shifter in neutral and with parking brake set.
 Refer to the appropriate Service Manual for Troubleshooting, Specifications and Systems Operations.

COMPONENT AND TAP LOCATIONS



- (1) Inlet manifold
- (2) Bulldozer lift control valve
- (3) Bulldozer tilt control valve
- (4) Ripper lift control valve
- (5) Ripper tilt control valve
- (6) Endcover
- (7) Main relief valve
- (8) Charging valve
- (9) Checkvalve

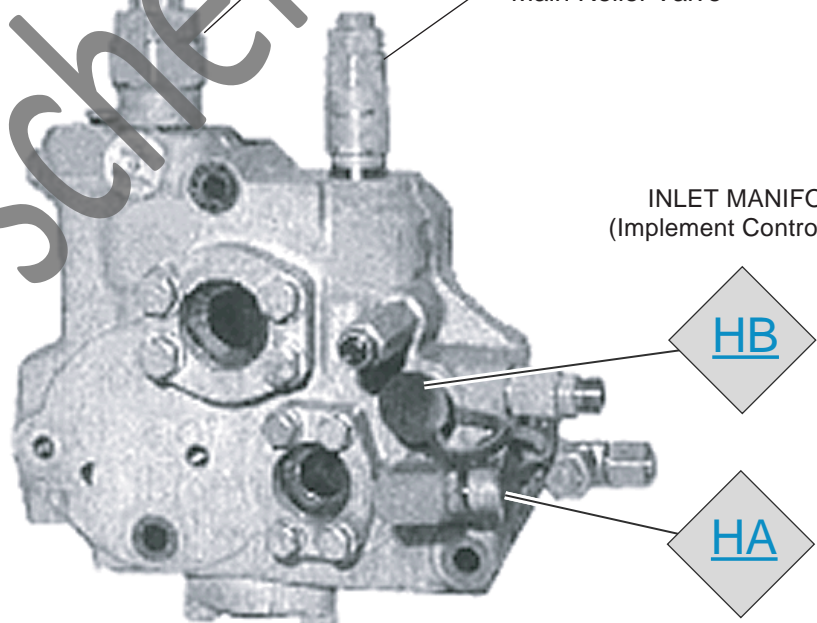


CONTROL VALVE:

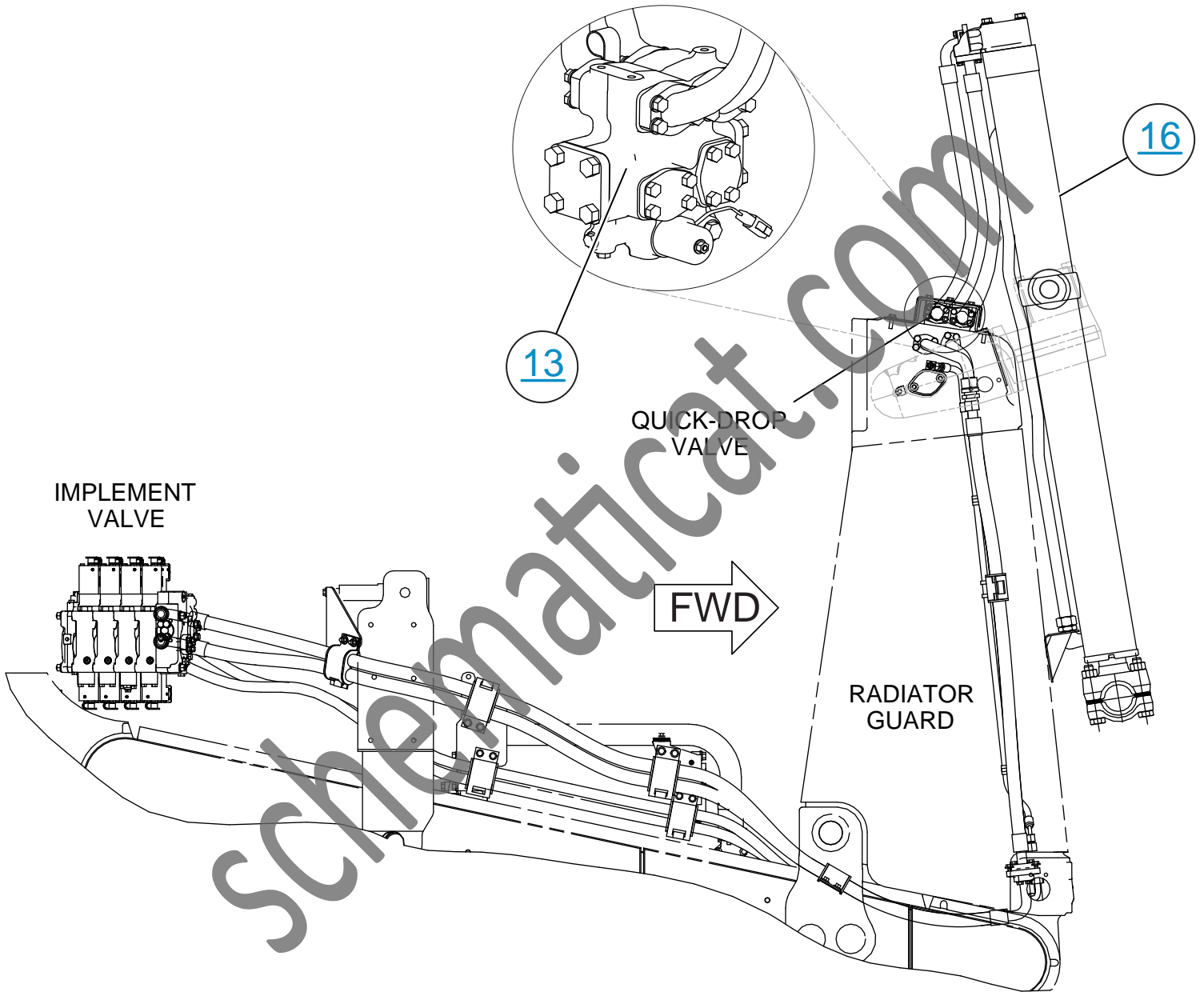
Charging Valve

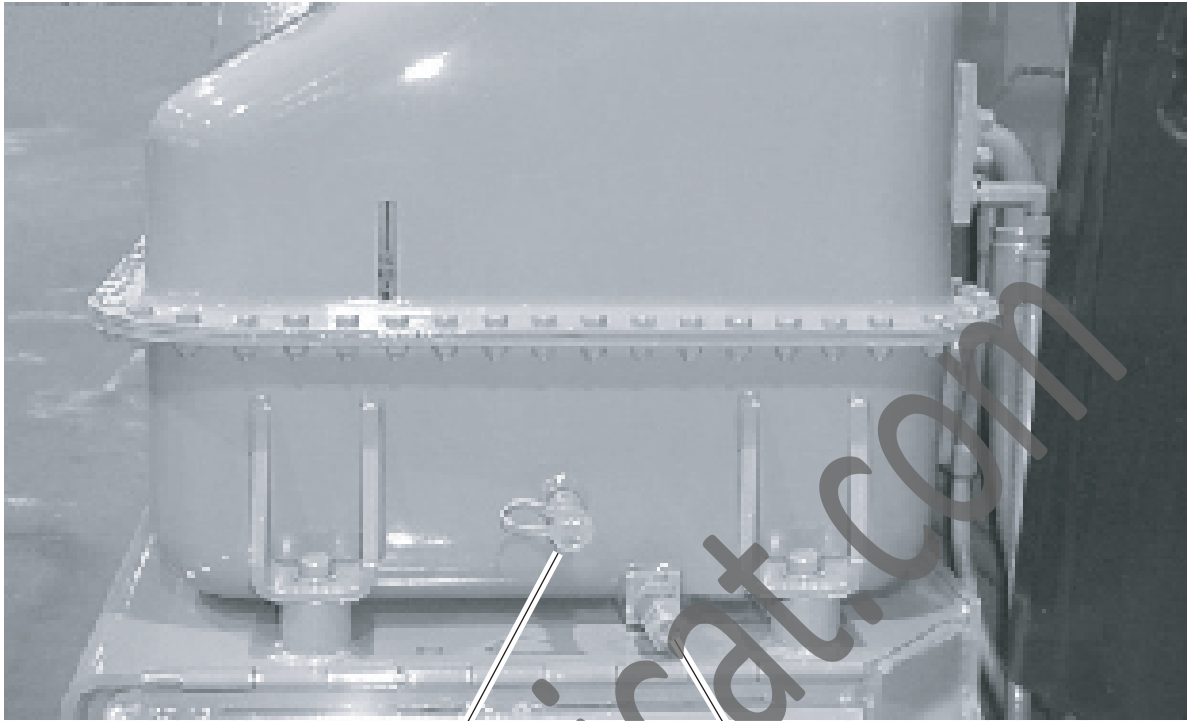
Main Relief Valve

INLET MANIFOLD:
(Implement Control Valve)



LIFT CYLINDERS (QUICK - DROP VALVE)





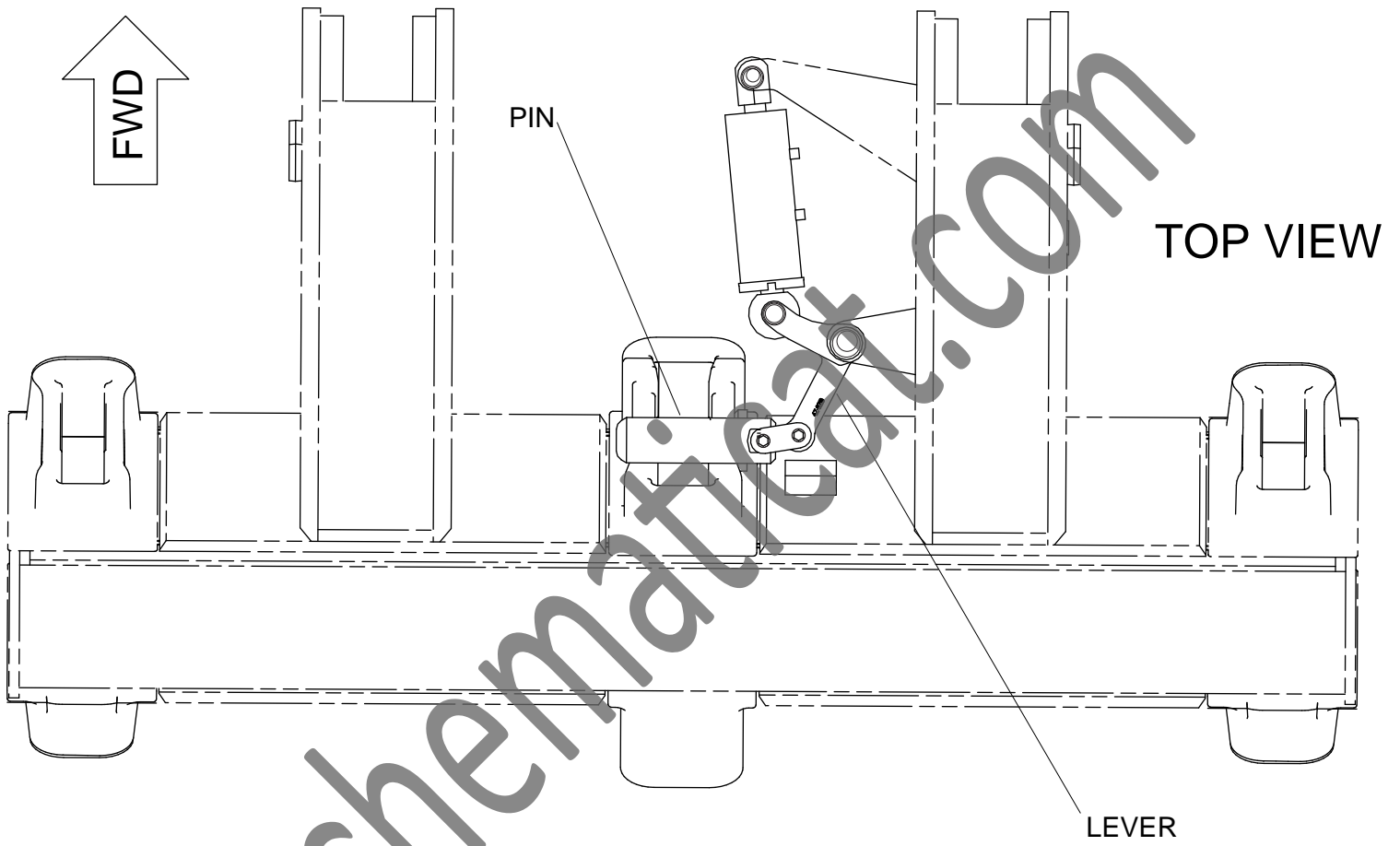
◇ B Oil Sampling Port

Hydraulic Tank Drain

Pressure Relief Valve



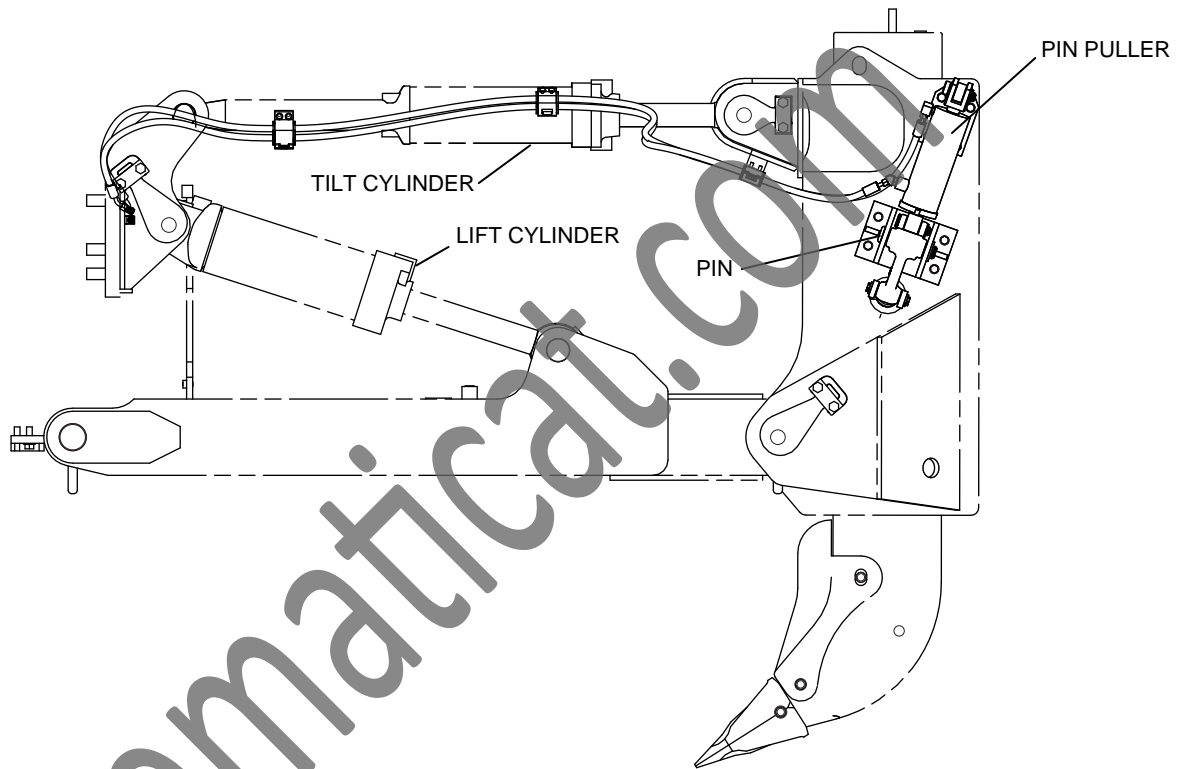
PIN PULLER ATTACHMENT



RIPPER ATTACHMENT



LEFT SIDE VIEW



TILT CYLINDER ATTACHMENT

