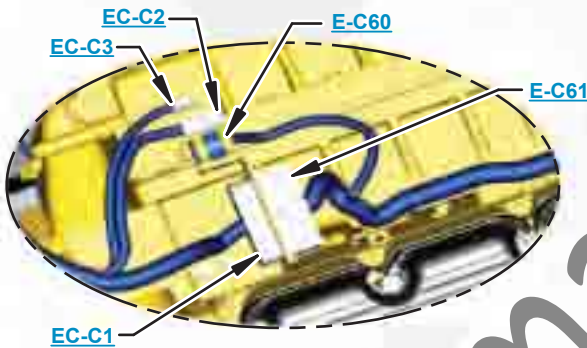


This document is best viewed at a screen resolution of 1024 X 768.

To set your screen resolution do the following:
RIGHT CLICK on the **DESKTOP**.
 Select **PROPERTIES**.
CLICK the **SETTINGS TAB**.
MOVE THE SLIDER under **SCREEN RESOLUTION** until it shows **1024 X 768**.
CLICK OK to apply the resolution.

The Bookmarks panel will allow you to quickly navigate to points of interest.



Click on any text that is BLUE and underlined. These are hyperlinks that can be used to navigate the schematic and machine views.

VIEW ALL CALLOUTS

When only one callout is showing on a machine view this button will make all of the callouts visible. This button is located in the top right corner of every machine view page.

HOTKEYS (Keyboard Shortcuts)		
	FUNCTION	KEYS
	Zoom In	"CTRL" / "+"
	Zoom Out	"CTRL" / "-"
	Fit to Page	"CTRL" / "0" (zero)
	Hand Tool	"SPACEBAR" (hold down)
	Find	"CTRL" / "F"



Schematic

D9T Track-Type Tractor Hydraulic System

TWG1-UP

SchematicCat.Com

COMPONENT LOCATION



Description	Part Number	Machine Location	Schematic Location
STANDARD CONFIGURATION			
PUMP GP-PISTON IMPLEMENT AND FAN DRIVE PUMP GP	333-7825	1	E-7
PUMP GP-IMPLEMENT PUMP	214-1098	1A	F-9
PUMP GP-PISTON FAN PUMP	333-7826	1B	D-7
PUMP GP-PS-BSC-V STEERING PUMP	333-7827	2	E-2
MOTOR GP-PLF-125 STEERING MOTOR	214-1094	3	E-5
MOTOR GP-PL-F w/ANTI-CAVITATION VALVE-FAN	214-1099	4	I-2
VALVE AS-CONTROL THERMAL and PRESS RELIEF COOLER BY-PASS	124-8335	5	H-2
VALVE AS. IMPLEMENT PILOT SUPPLY, LOCKOUT and STRG CHARGE	341-9000	6	F-5
ACCUMULATOR GP	200-0750	7	F-5
FILTER GP-O(BSC)	371-0573	8	F-2
VALVE GP - 4 BANK BLADE B-VALVE	336-5707	9	H-3
VALVE GP - CONT LIFT SECTION	336-5714	9A	G-7
VALVE GP - CONT TILT SECTION	362-3314	9B	G-6
VALVE GP - CONT RIPPER RAISE	336-5712	9C	G-5
VALVE GP - CONT RIPPER TIP	336-5713	9D	G-4
MANIFOLD GP -DOZER	367-5706	9E	I-8
COVER VALVE END COVER	358-5155	9F	H-3
MANIFOLD SUCTION GALLERY	208-1558	10	D-8
MANIFOLD RETURN MANIFOLD	238-4428	11	A-6
VALVE GP -QUICK DROP VALVE	217-4327	12	J-8
CYL GP - RAISE/LOWER	165-8633	13	J-7, J-9
CYL GP - SINGLE TILT	109-6778	14	J-6
TANK GP - FILTER OIL / AIR	222-0491	15	B-4
VALVE - BREAKER HYD TANK BREATHER	154-6165	16	C-2
VALVE - BREAKER EU HYD TANK BREATHER	220-0813	17	B-2
ELEMENT AS. TANK	15-0774	18	D-2
VALVE GP -STEERING CHARGE COLD OIL RELIEF	261-7593	19	I-2
VALVE - CHECK FAN CHECK VALVE	4E-1437	19	I-2
CORE AS - OIL CLR HEAT REJECTION	281-7590	20	H-1
ELECTRICAL COMPONENTS			
SWITCH AS - PRESS CHARGE/PILOT FILTER BYPASS PRESSURE SWITCH	227-6744	21	F-2
SENSOR GP - PRESS IMPLEMENT PUMP PRESSURE	296-5270	22	F-8
SENSOR GP - TEMP TANK TEMPERATURE SENSOR	145-7028	23	C-2
SENSOR GP - PRESS CHARGE/PILOT PRESSURE	320-3064	24	F-5
SENSOR GP -SHORT STEERING MOTOR SPEED SENSOR	323-2570	25	E-5
RIPPER ATTACHEMENT			
MANIFOLD RIPPER CYLINDER SUPPLY AND RETURN MANIFOLD	211-9491	26	J-4
CYL GP - LIFT	132-5123	27	J-4, J-5
CYL GP - TIP	132-5149	28	J-4, J-3
PLATE - ORIFICE ORIFICE	117-8727	29	I-4
PIN PULLER ATTACHMENT			
CYL GP - RIPPER PIN PULLER	6E-3113	30	A-15
VALVE GP -PIN PULLER CONTROL	188-6140	31	B-15
REVERSING FAN ATTACHMENT			
MOTOR GP -ANTI-CAVITATION VALVE-FAN	214-1100	32	D-13
MANIFOLD GP -CONT FAN REVERSING VALVE	229-1466	33	D-7, D-16
DUAL TILT ATTACHEMENT			
VALVE GP - CONT DUAL TILT VALVE	217-4326	34	D-11
CYL GP - TILT (LH)	109-8832	35	E-11
CYL GP - TILT (RH)	109-8833	36	D-11
POSITION SENSING CYLINDER			
CYL GP - RAISE/LOWER	225-6727	37	B-12, B-11
WINCH COMPONENTS			
* VALVE GP - 4 (BANK) DOZER LIFT,TILT,WINCH B-VALVE	336-5708	38	I-14
* VALVE GP - CONT LIFT SECTION	336-5714	38A	F-14
* VALVE GP - CONT TILT SECTION	362-3314	38B	F-14
* VALVE GP - CONT AUXILIARY VALVE SECTION	362-3315	38C	F-12
* VALVE GP - CONTROL WINCH SECTION	348-9719	38D	F-11
* MANIFOLD GP -WINCH B-VALVE INLET MANIFOLD	223-1094	38E	F-16
* COVER -VALVE END COVER	208-9683	38F	F-10
MANIFOLD GP -MANIFOLD AND CONTROL GP	191-1443	39	I-11
WINCH AR -PACCAR WINCH UNIT	209-2371	40	I-12

★ = 4 Bank Valve (Winch), View Not Shown.

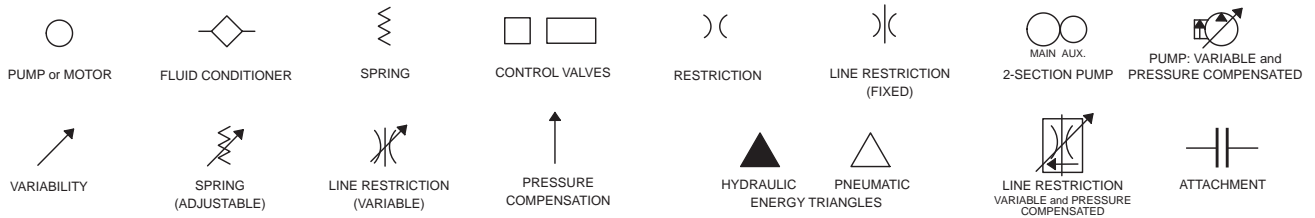
TAP LOCATIONS Pressure, Sampling, Sensor		
Tap Number	Description	Schematic Location
AP	ACCUMULATOR PRESSURE	F-5
HA	IMPL-PUMP-DISCHARGE	F-8
HB	IMPL-PUMP-SIGNAL	F-9
HC	LEFT STEER LOOP PRESSURE	D-4
HD	RIGHT STEER LOOP PRESSURE	E-4
E	CHARGE PUMP PRESS	F-5
HFPD	FAN PUMP DISCHARGE	F-8
HPS	PILOT SUPPLY	E-6
HPDL	HYD PILOT DOZER LOWER	I-7, H-15
HPDR	HYD PILOT DOZER RAISE	G-7, F-15
HPTR	HYD PILOT TILT RIGHT	G-6, F-13
HPTL	HYD PILOT TILT LEFT	I-6, H-13
HPRR	HYD PILOT RIPPER RAISE	G-5
HPRL	HYD PILOT RIPPER LOWER	I-5
HPRI	HYD PILOT RIPPER IN	G-4
HPRO	HYD PILOT RIPPER OUT	I-4
*HPAA	HYD PILOT REAR AUX A PORT	F-12
*HPAB	HYD PILOT REAR AUX B PORT	H-12
*HPWRI	HYD PILOT WINCH REEL IN	F-11
*HPWRO	HYD PILOT WINCH REEL OUT	H-11
HPAF	HYD PILOT REAR AUX F PORT (NOT SHOWN)	----
SOS	OIL SAMPLING	F-3

* = 4 Bank Valve (Winch), View Not Shown.

FLUID POWER SYMBOLS



BASIC COMPONENT SYMBOLS



VALVE ENVELOPES

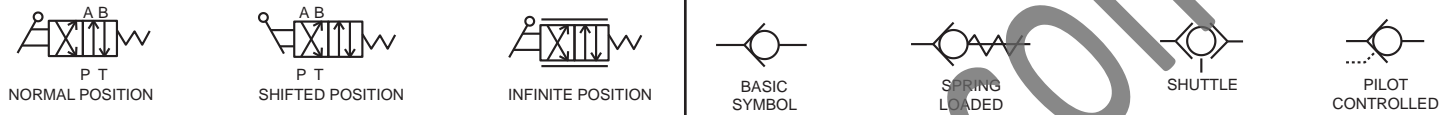
VALVES

VALVE PORTS



CONTROL VALVES

CHECK VALVES



FLUID STORAGE RESERVOIRS



MEASUREMENT

ROTATING SHAFTS



COMBINATION CONTROLS



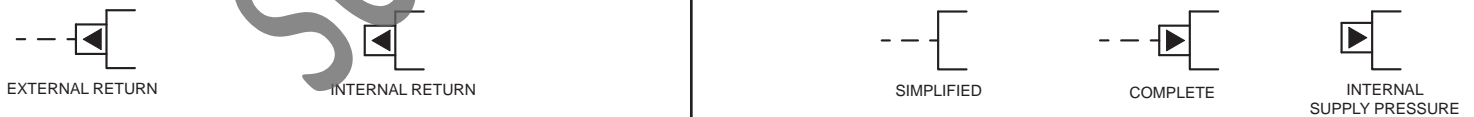
MANUAL CONTROL SYMBOLS



RELEASED PRESSURE

PILOT CONTROL SYMBOLS

REMOTE SUPPLY PRESSURE



ACCUMULATORS

CROSSING AND JOINING LINES

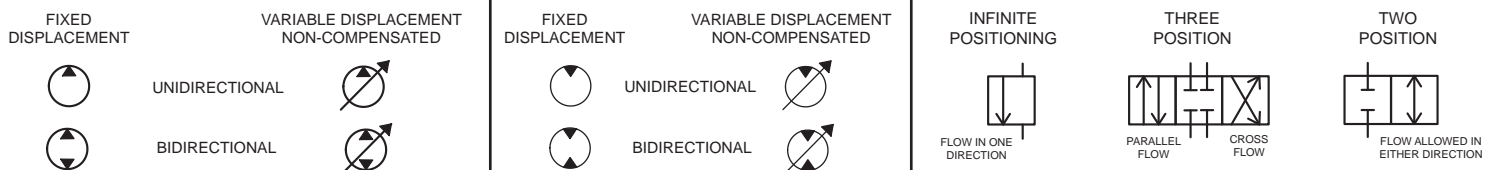
HYDRAULIC AND PNEUMATIC CYLINDERS



HYDRAULIC PUMPS

HYDRAULIC MOTORS

INTERNAL PASSAGEWAYS



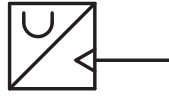
ELECTRICAL SYMBOLS



Hydraulic Symbols (Electrical)



Transducer
(Fluid)



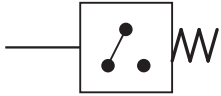
Transducer
(Gas / Air)



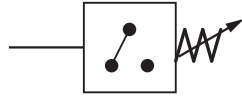
Generator



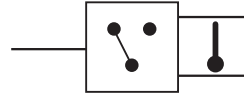
Electric Motor



Pressure Switch



Pressure Switch
(Adjustable)

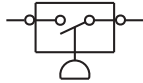


Temperature Switch

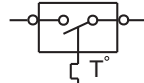


Electrical Wire

Electrical Symbols (Electrical)



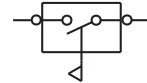
Pressure
Symbol



Temperature
Symbol



Level
Symbol

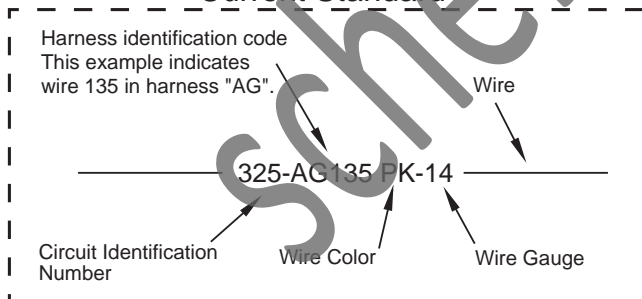


Flow
Symbol

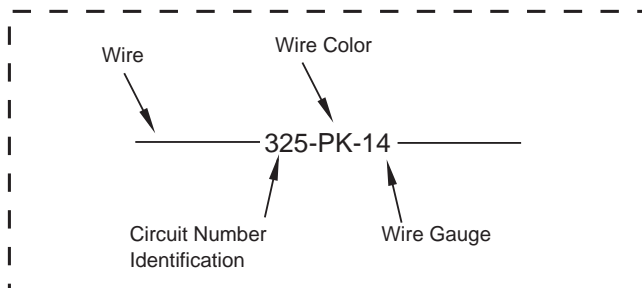
Wire Number Identification Codes

Electrical Schematic Example

Current Standard

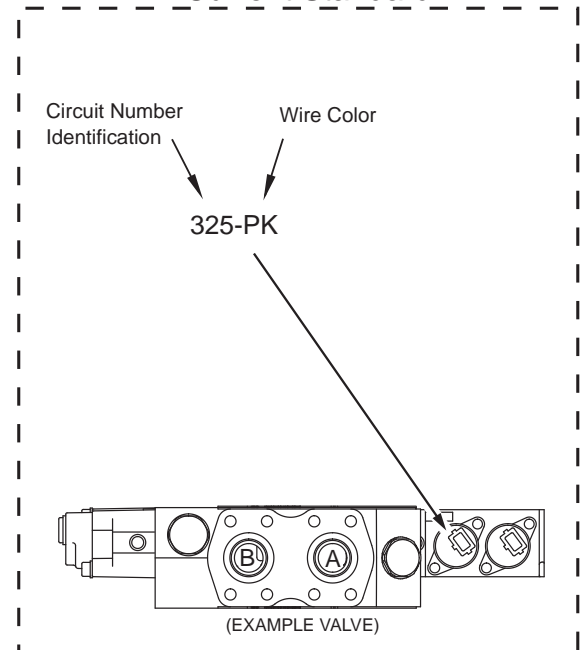


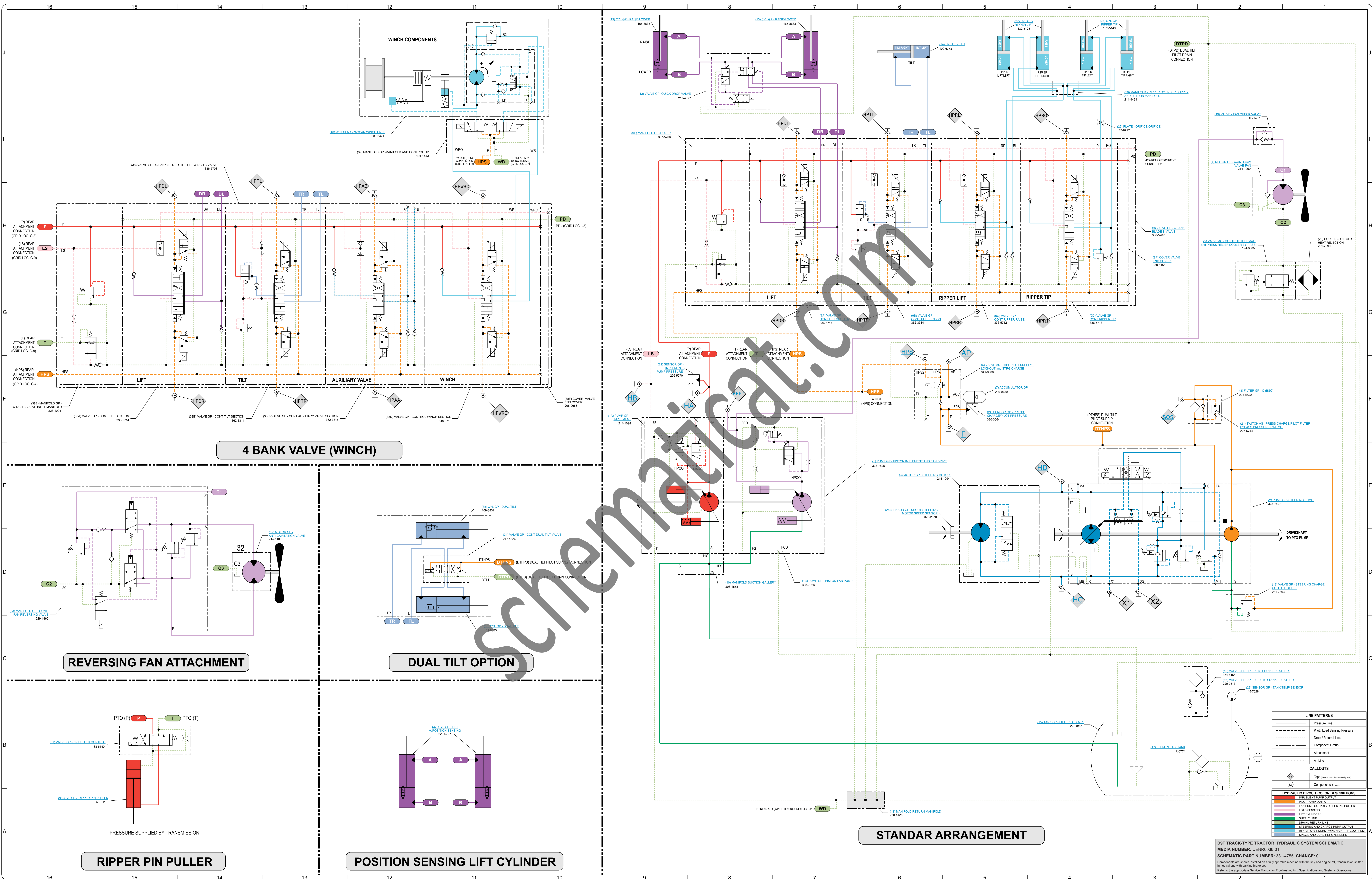
Previous Standard

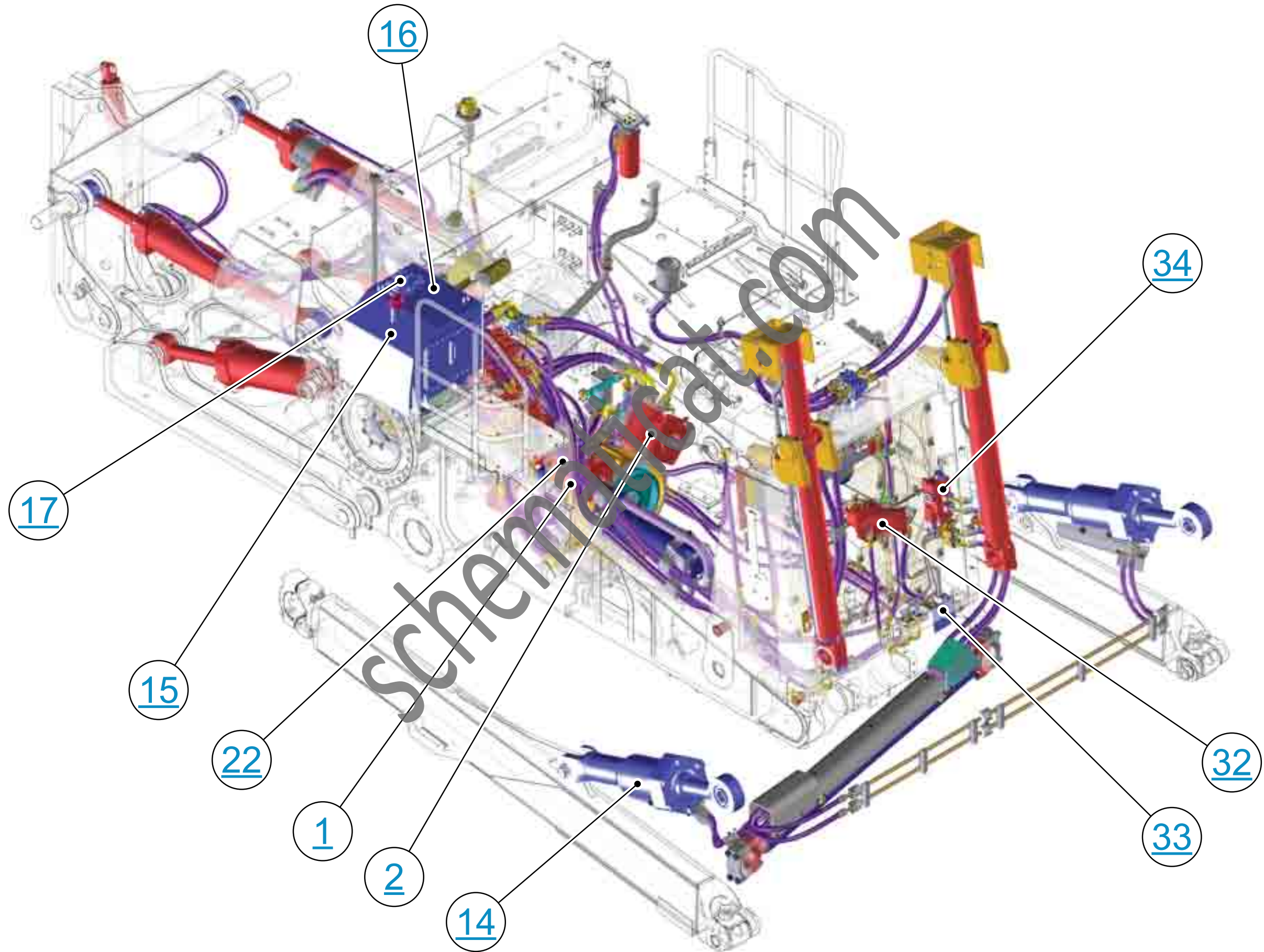


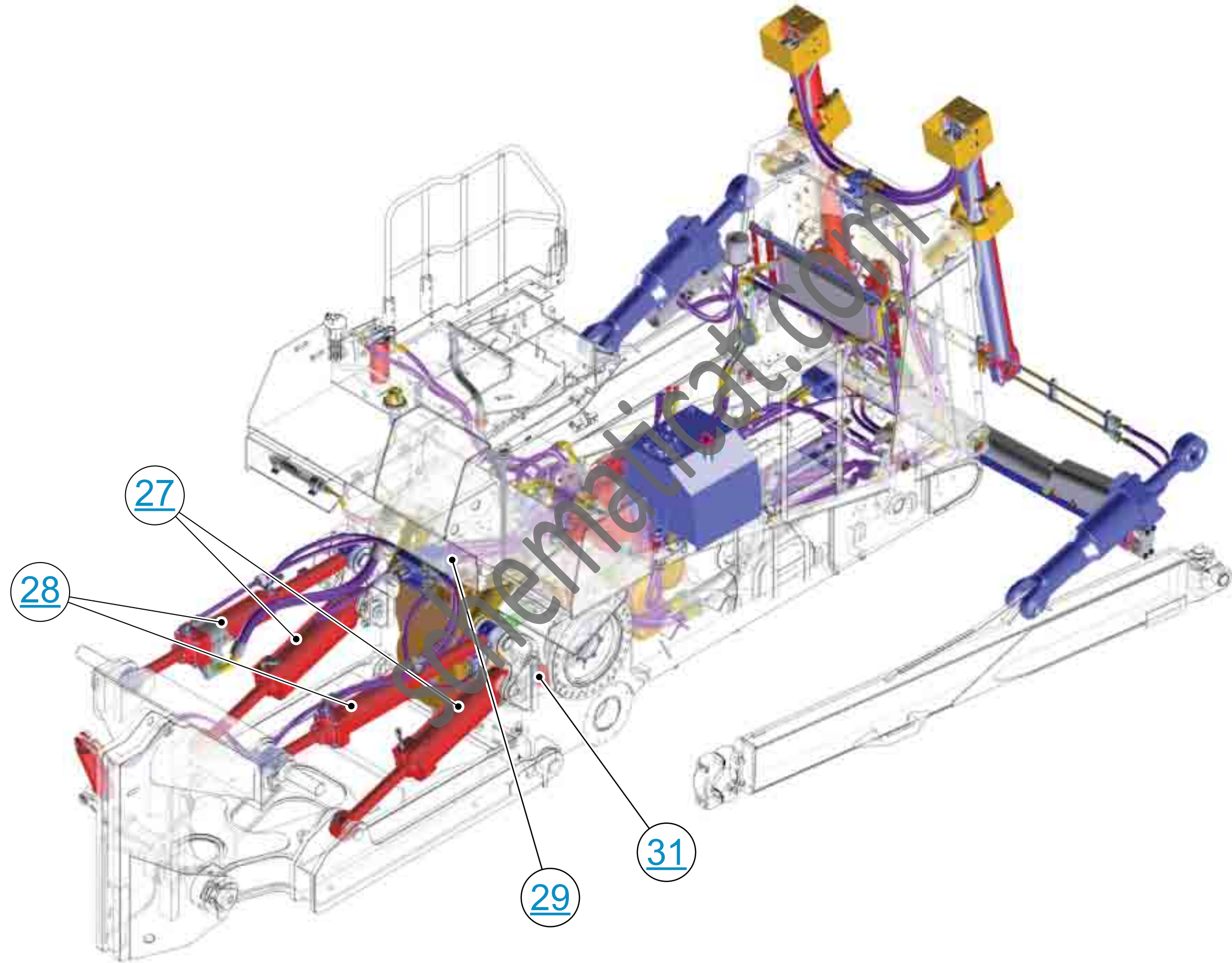
Hydraulic Schematic Example

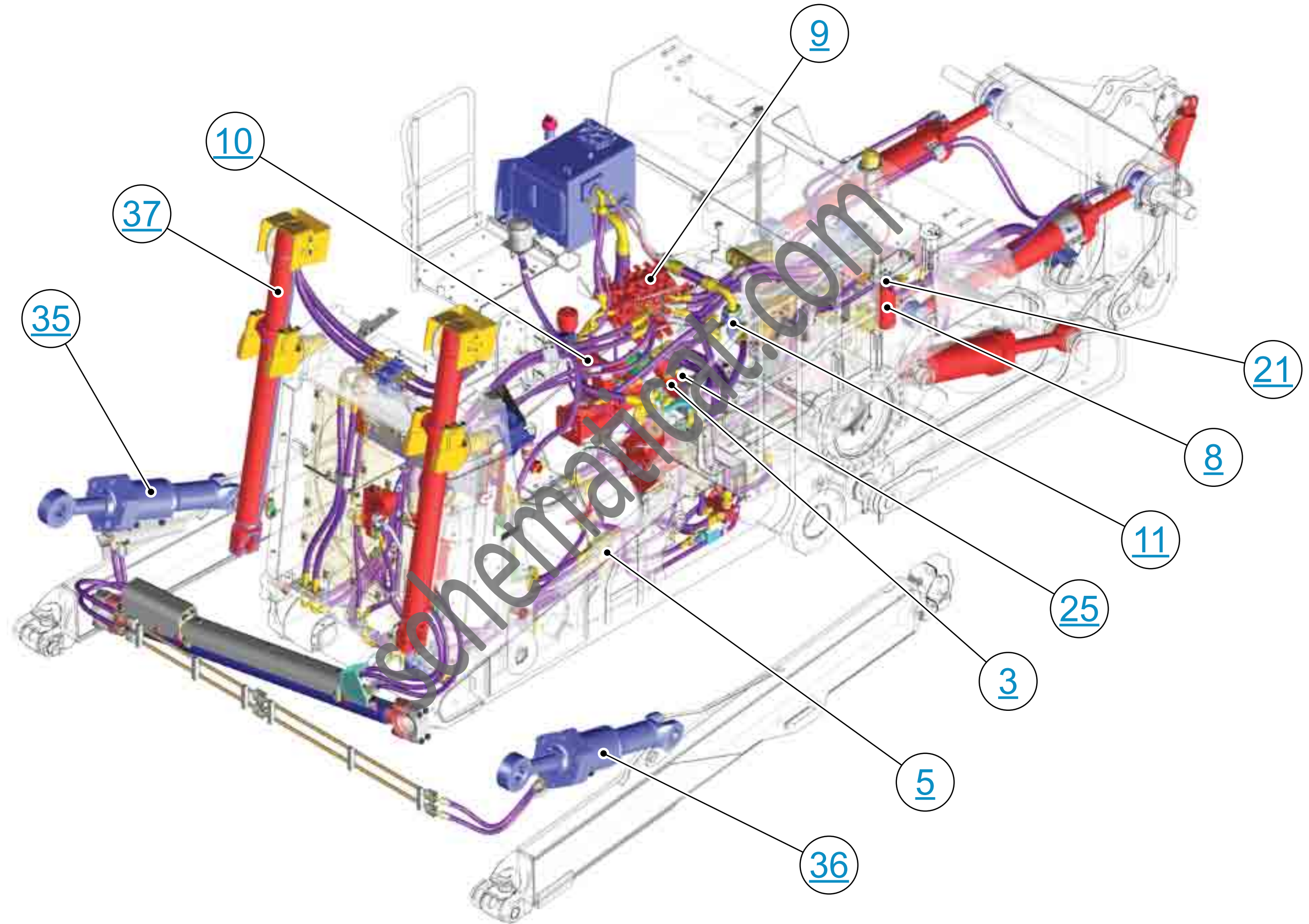
Current Standard

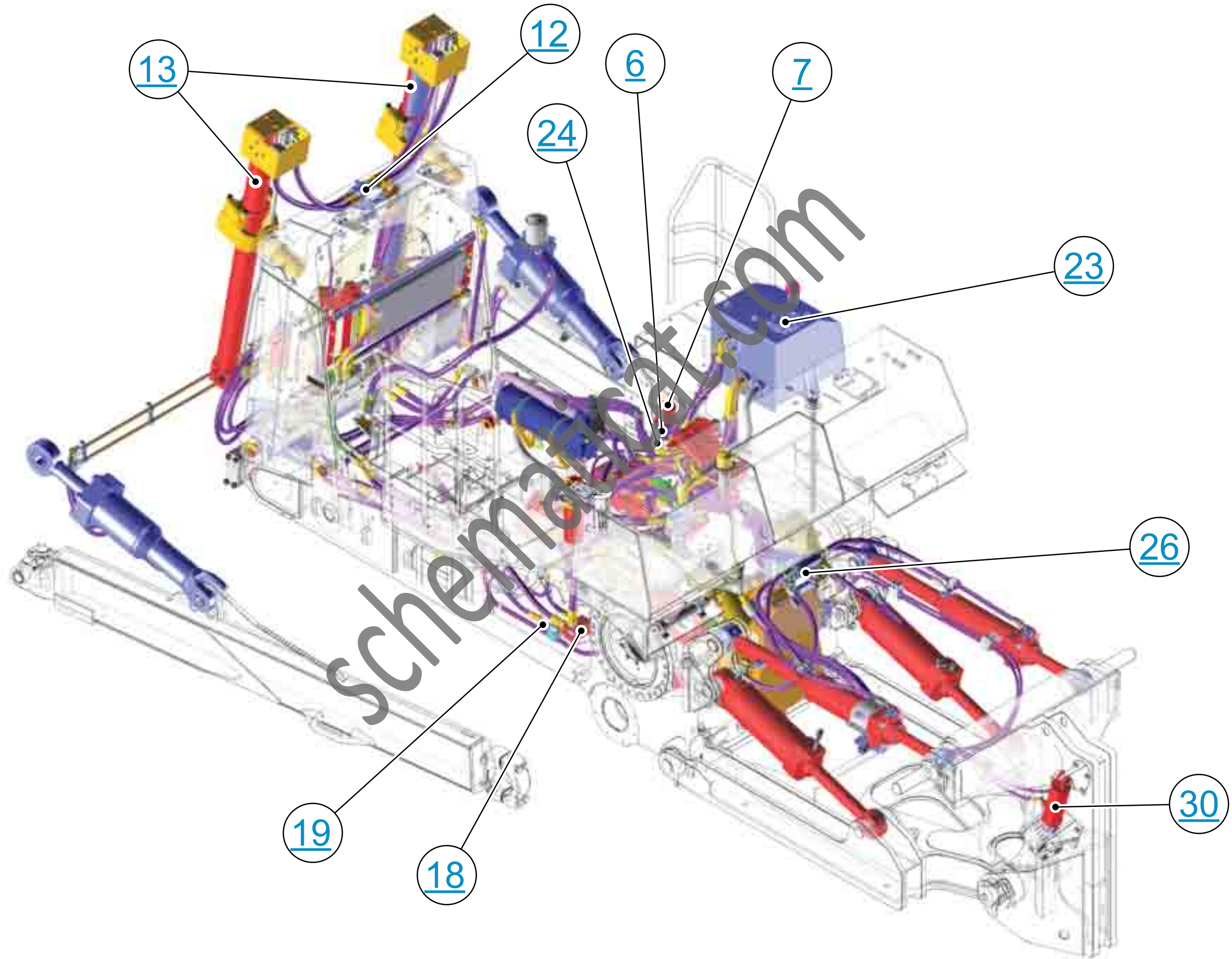


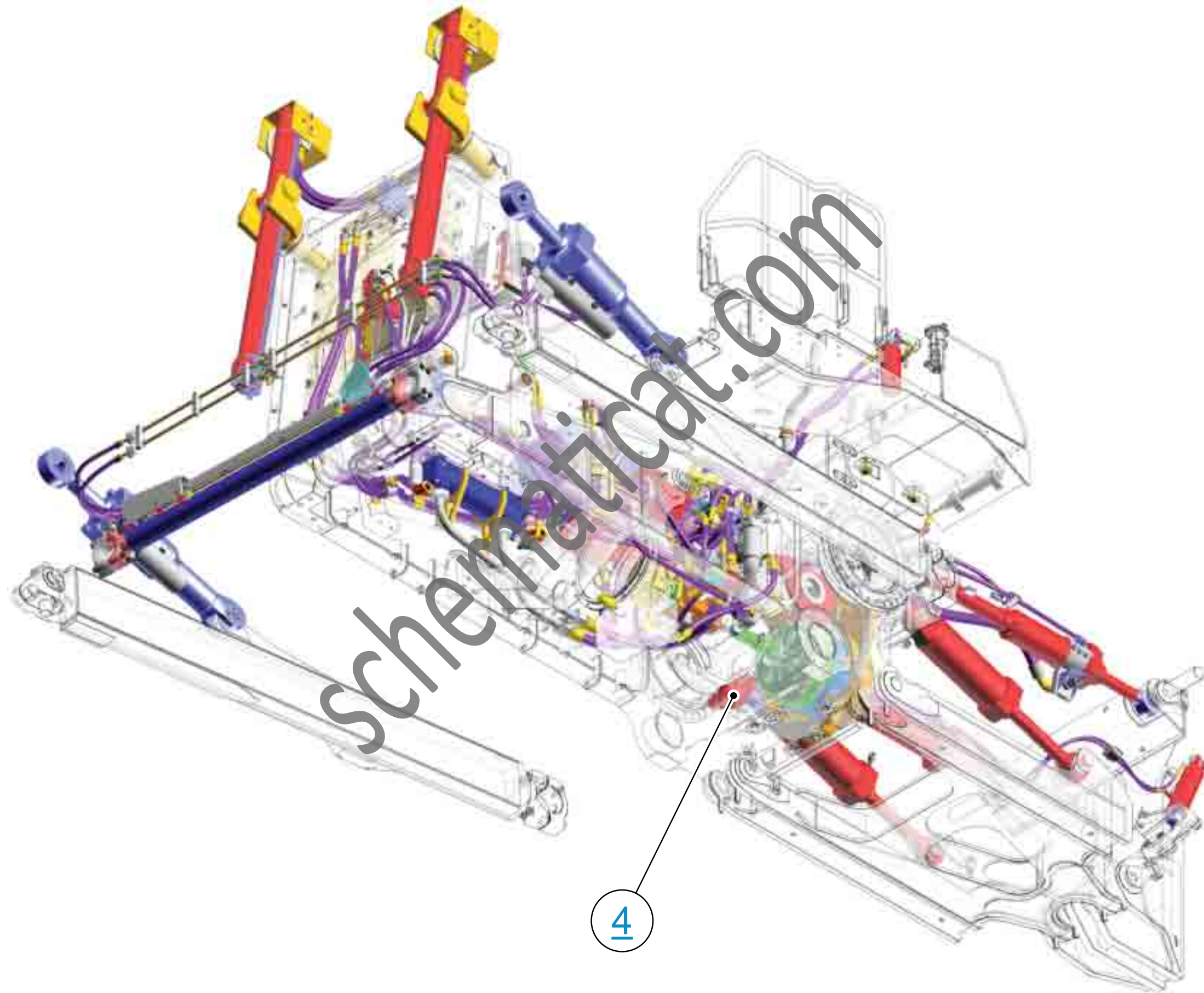


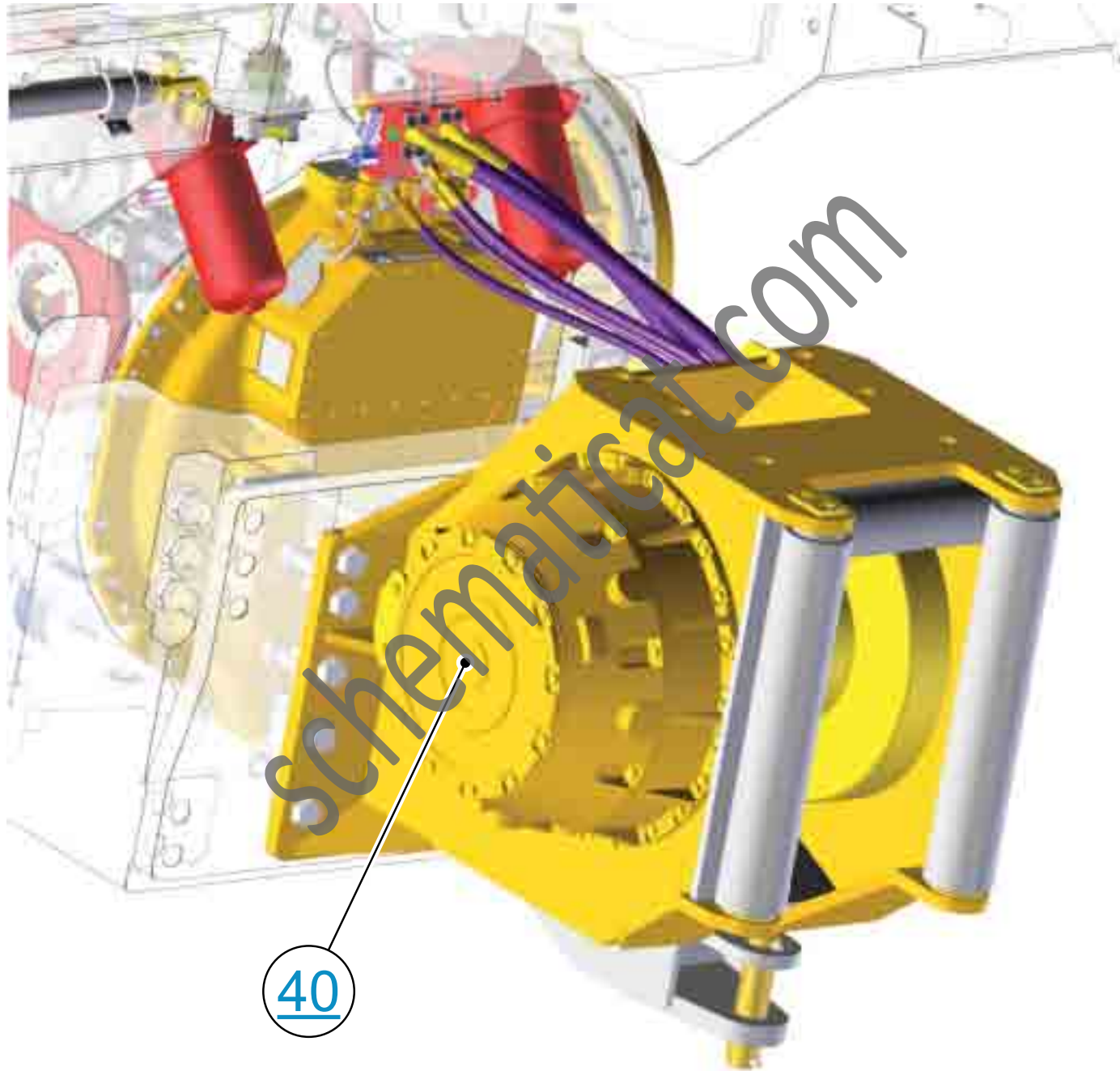


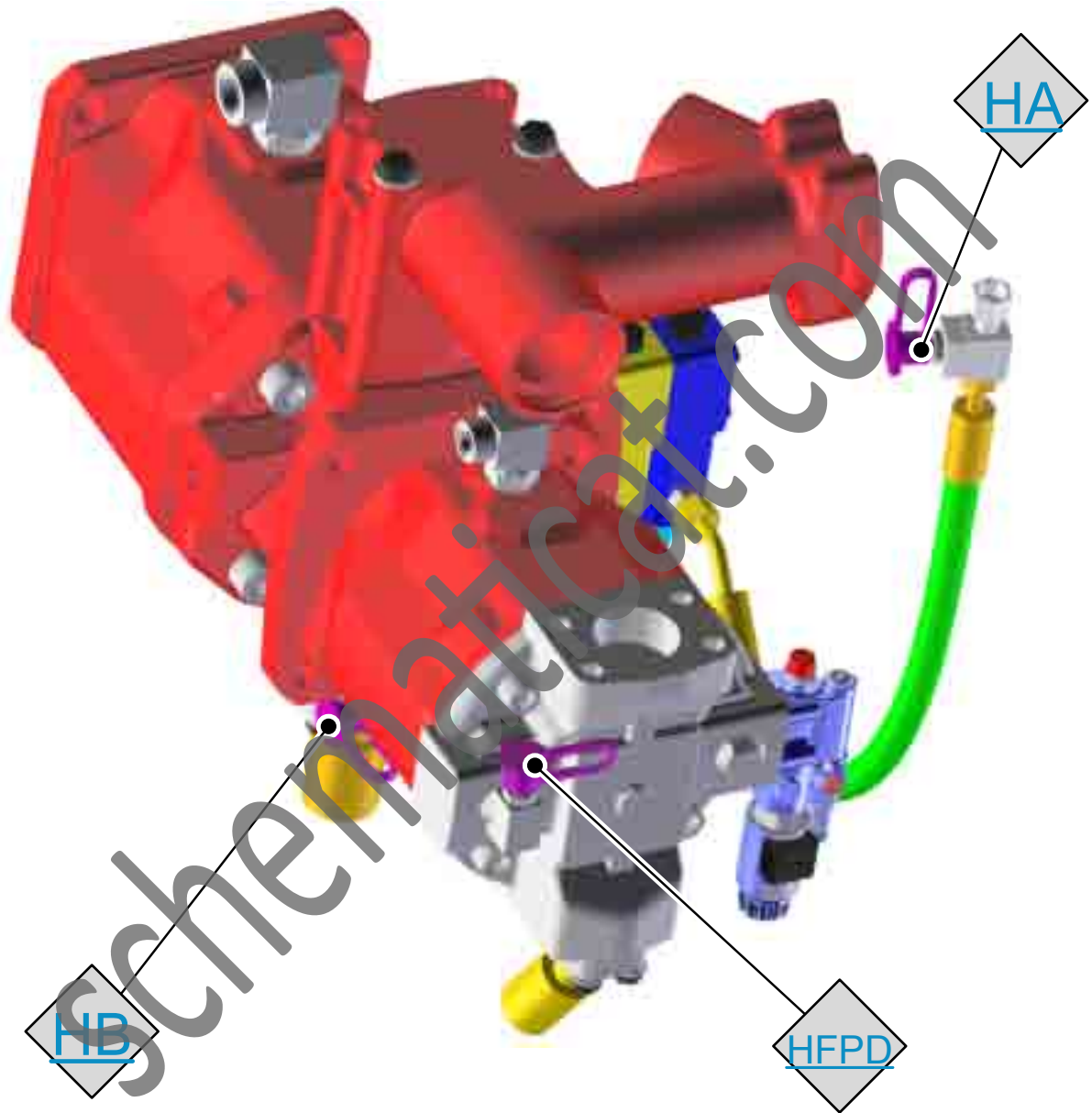




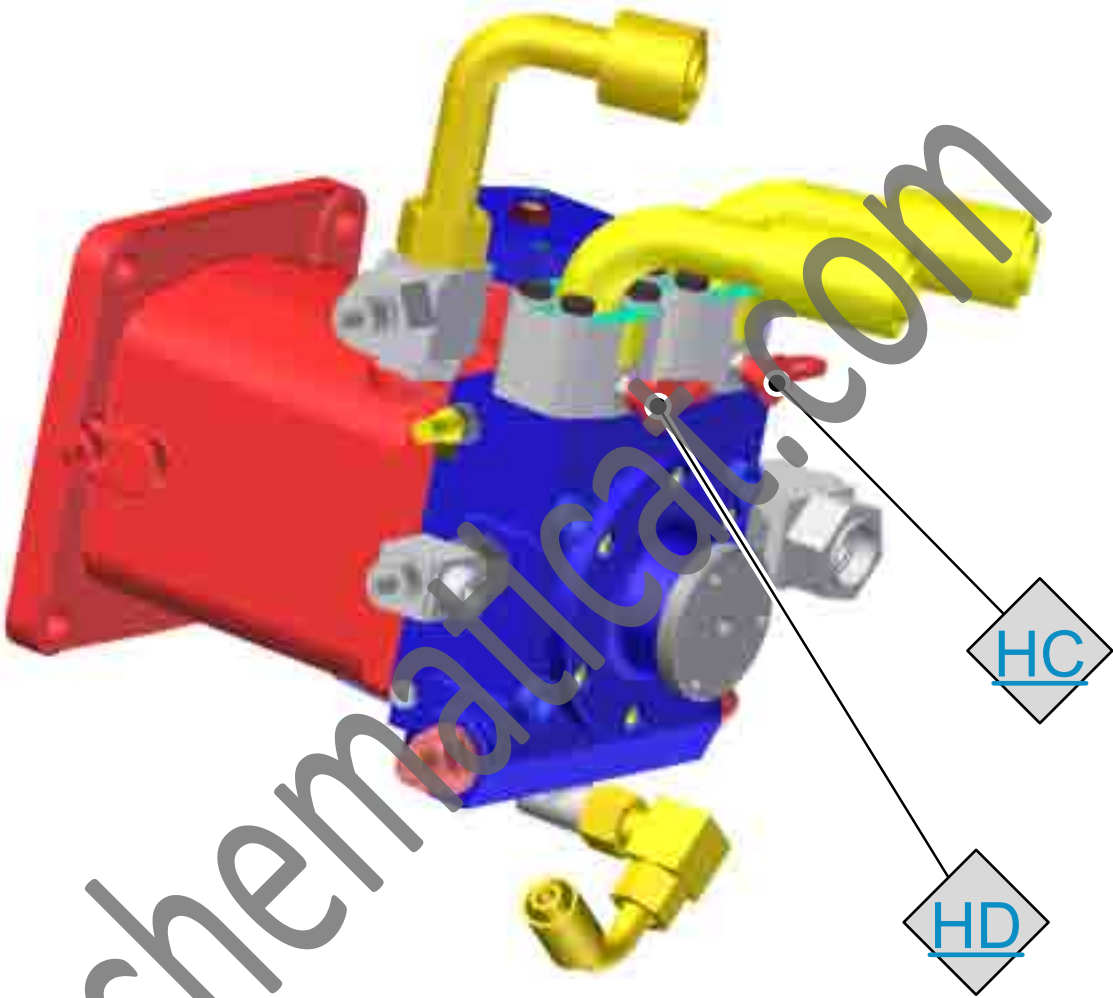




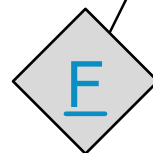




STEERING PUMP AND MOTOR VIEW



IMPLEMENT PILOT SUPPLY, LOCKOUT and STEERING CHARGE VALVE





BYPASS PRESSURE SWITCH
(LEFTHAND SIDE COMPARTMENT)

