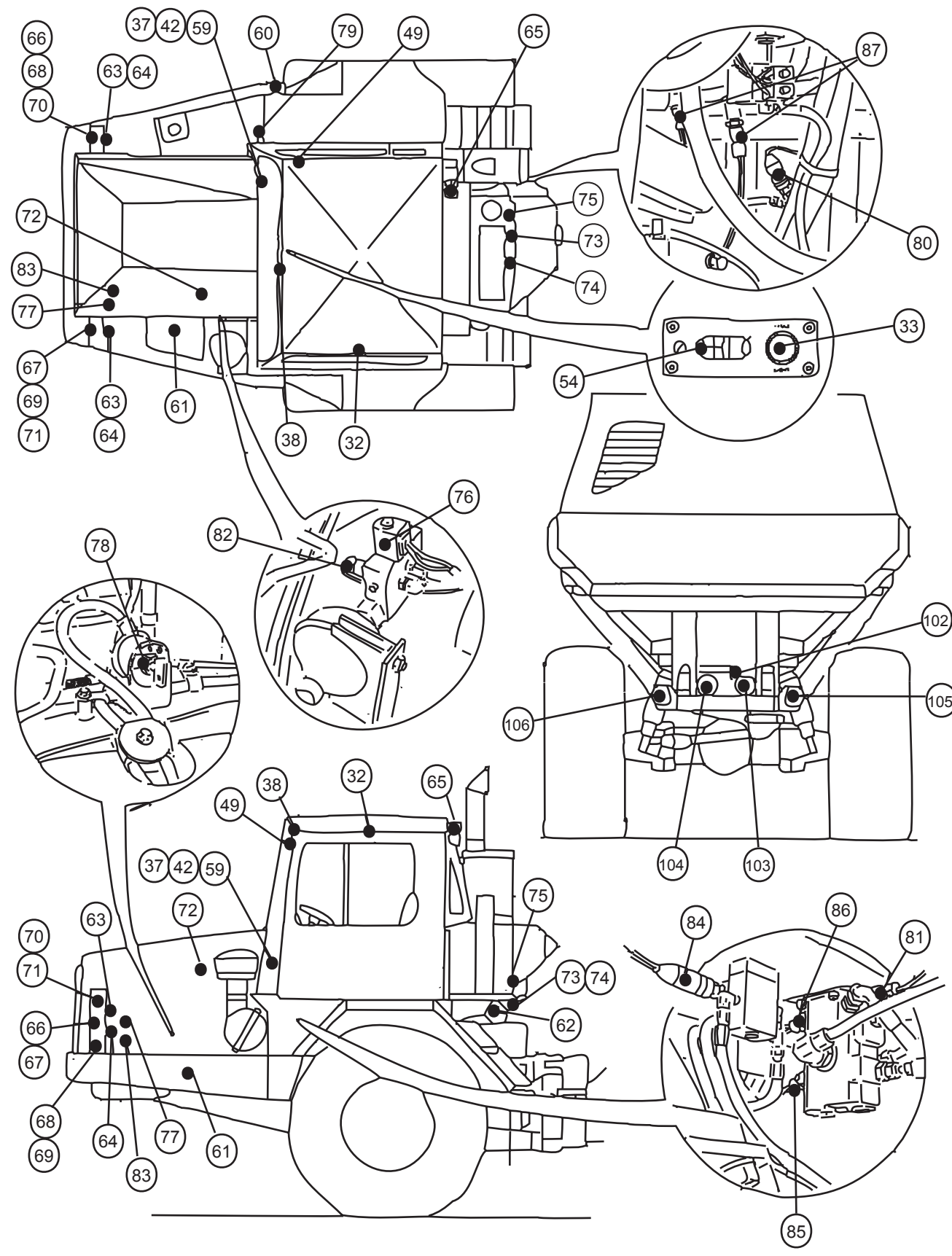


Component Locations

Components In The Operators Station			Tractor Mounted Components		
IDENT	Schematic Component	Schematic Location	IDENT	Schematic Component	Schematic Location
1	ALARM - FAULT	C-4	60	AUXILIARY START RECEPTACLE	A-5
2	BREAKER - AIR CONDITIONER	D-4	61	BATTERIES	A-5
3	BREAKER - ALTERNATOR	D-9	62	CONTROL - FRONT SUSPENSION	F-12
4	BREAKER - ENGINE SHUTDOWN	E-4	63	HORN - HIGH TONE	B-1
5	BREAKER - HEADLAMP	D-4	64	HORN - LOW TONE	B-1
6	BREAKER - KEY	E-4	65	LAMP - CAB	C-9
7	BREAKER - RUNNING LAMPS	D-4	66	LAMP - HIGH BEAM HEAD - RIGHT	A-1
8	CONTROL ENGINE - SHUTDOWN	E-1	67	LAMP - HIGH BEAM HEAD - LEFT	B-1
9	CONNECTOR - DIAGNOSTIC	F-9	68	LAMP - LOW BEAM HEAD - RIGHT	A-1
10	FLASHER	D-2	69	LAMP - LOW BEAM HEAD - LEFT	B-1
11	FUSE - BACKUP ALARM	D-7	70	LAMP - TURN/PARK - RIGHT - FRONT	A-1
12	FUSE - BODY HOIST CONTROL	E-6	71	LAMP - TURN/PARK - LEFT - FRONT	C-1
13	FUSE - CAB LAMP/ STOP LAMP	E-7	72	MOTOR - FRONT WASHER	D-11
14	FUSE - HORN	D-7	73	SOLENOID - BODY RAISE	B-10
15	FUSE - GAUGES	E-7	74	SOLENOID - BODY LOWER	B-10
16	FUSE - INDICATOR LAMPS	E-5	75	SOLENOID - FRONT SUSPENSION	F-12
17	FUSE - OPERATOR MONITOR	E-7	76	SOLENOID - PARK BRAKE	B-10
18	FUSE - PARK BRAKE	E-5	77	SOLENOID - START AID	C-2
19	FUSE - RETARDER	E-5	78	SWITCH - DISCONNECT	A-4
20	FUSE - START AID	D-7	79	SWITCH - FUEL LEVEL	A-2
21	FUSE - SUSPENSION CONTROL	E-7	80	SWITCH - LOCK UP PRESSURE	B-6
22	FUSE - WASH/ WIPE	E-5	81	SWITCH - HYDRAULIC OIL PRESSURE	C-2
23	GAUGE - CONVERTER TEMPERATURE	F-3	82	SWITCH - PARK BRAKE	F-10
24	GROUND - DASH/PANEL	D-1	83	SWITCH - REFRIGERENT	B-2
25	INDICATOR - DIFFERENTIAL LOCK	F-4	84	SWITCH - RETARDER	E-10
26	INDICATOR - HIGH BEAM	F-5	85	SWITCH - SUSPENSION INHIBIT	E-11
27	INDICATOR - LEFT TURN	F-6	86	SWITCH - STOP LAMP	C-3
28	INDICATOR - RETARDER	F-4	87	SWITCH - STEERING PRESSURE	C-1
29	INDICATOR - RIGHT TURN	F-4			
30	INDICATOR - CONVERTER LOCK	F-5			
31	LAMP - AIR PRESSURE INDICATOR	B-7			
32	LAMP - DOME	F-2			
33	LAMP - MASTER FAULT	B-7			
34	METER - SPEEDO	E-4			
35	METER - SERVICE HOUR	E-4			
36	METER - TACHO	E-6			
37	MOTOR - BLOWER	E-5			
38	MOTOR - WIPER	B-5			
39	PANEL - OPERATOR MONITOR	B-6			
40	RELAY - MAIN POWER	F-1			
41	RELAY - START	D-4			
42	RESISTOR - AIR CONDITIONER/HEATER	D-9			
43	SWITCH - BACK-UP/ALARM	B-5			
44	SWITCH - BLOWER	C-1			
45	SWITCH - BODY HOIST CONTROL	B-6			
46	SWITCH - BODY HOIST	B-8			
47	SWITCH - CAB LAMP	B-7			
48	SWITCH - DIMMER	F-7			
49	SWITCH - DOME LAMP	A-12			
50	SWITCH - FRONT WIPER	C-2			
51	SWITCH - HORN	B-7			
52	SWITCH - KEY START	E-8			
53	SWITCH - NEUTRAL START	F-8			
54	SWITCH - OPERATOR MONITOR TEST	E-3			
55	SWITCH - PARK BRAKE	B-7			
56	SWITCH - RUNNING LAMP	F-3			
57	SWITCH - START AID	F-9			
58	SWITCH - TURN SIGNAL	F-8			
59	THERMOSTAT	F-3			
		E-2			
		B-6			



SENR8221  
October 1991

# Schematic

## D300D Articulated Truck

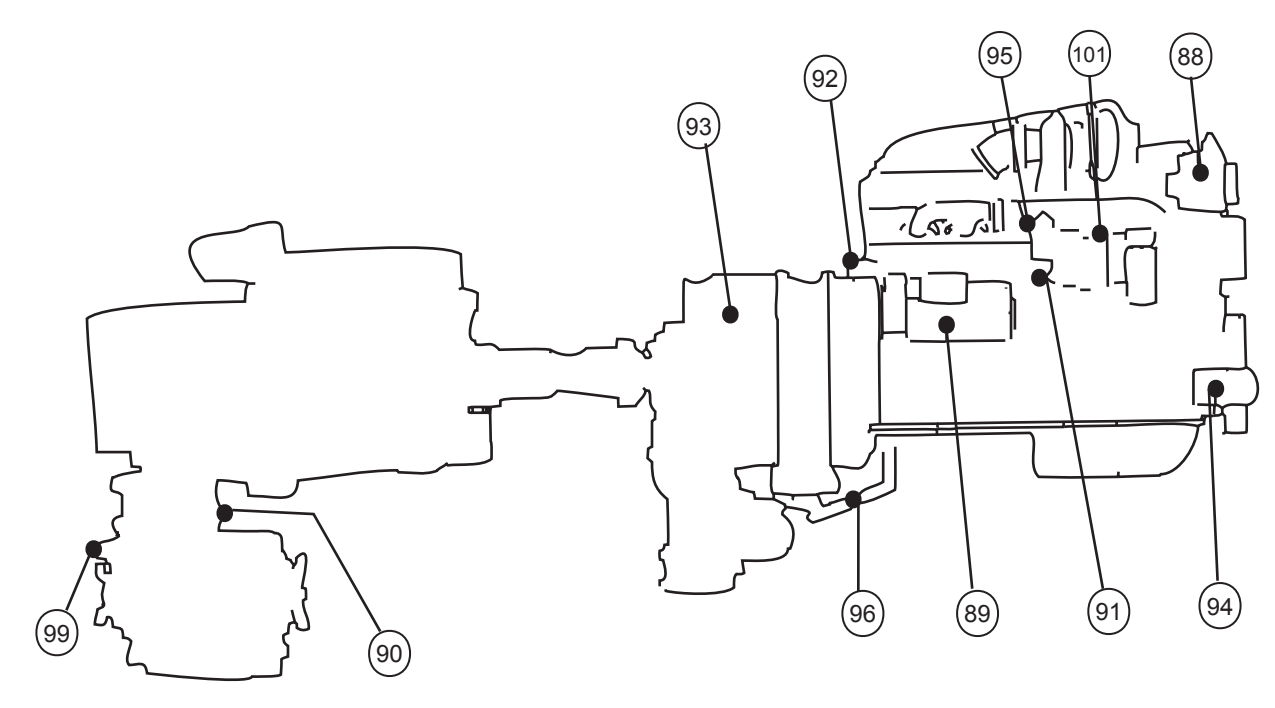
### Electrical System

5MG1-UP

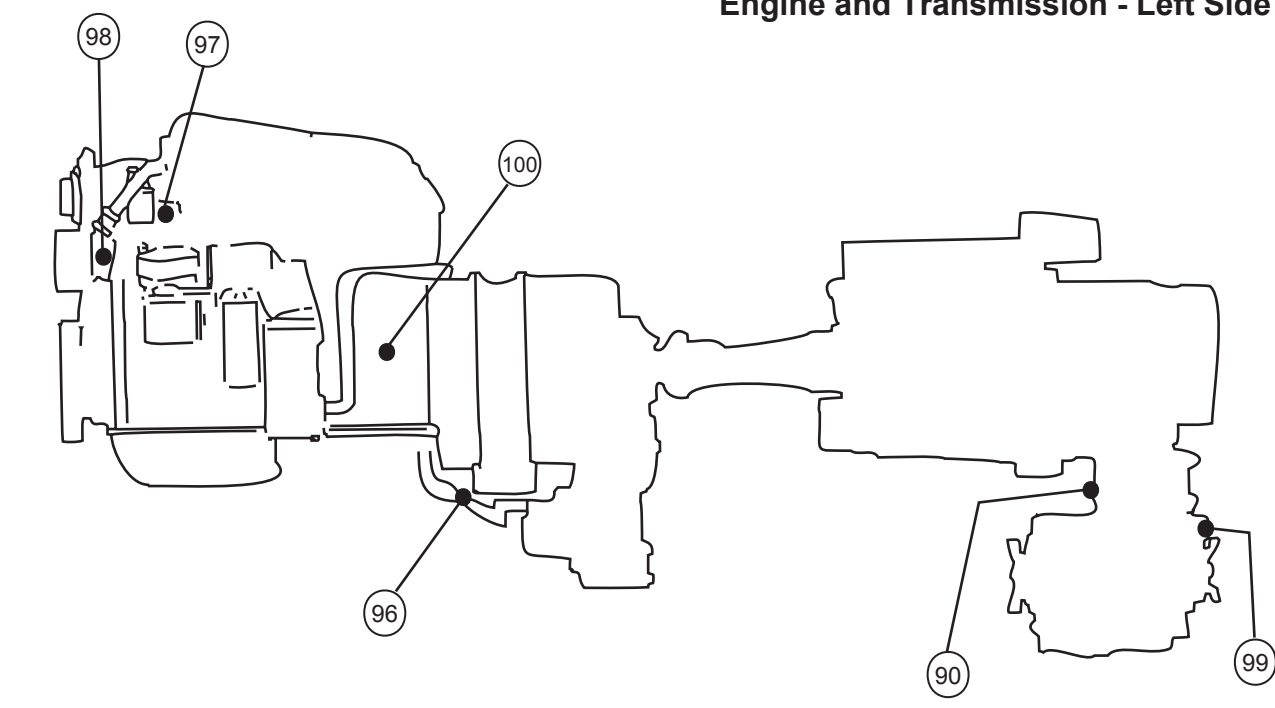
© 1991 Caterpillar  
All Rights Reserved

Printed in U.S.A.

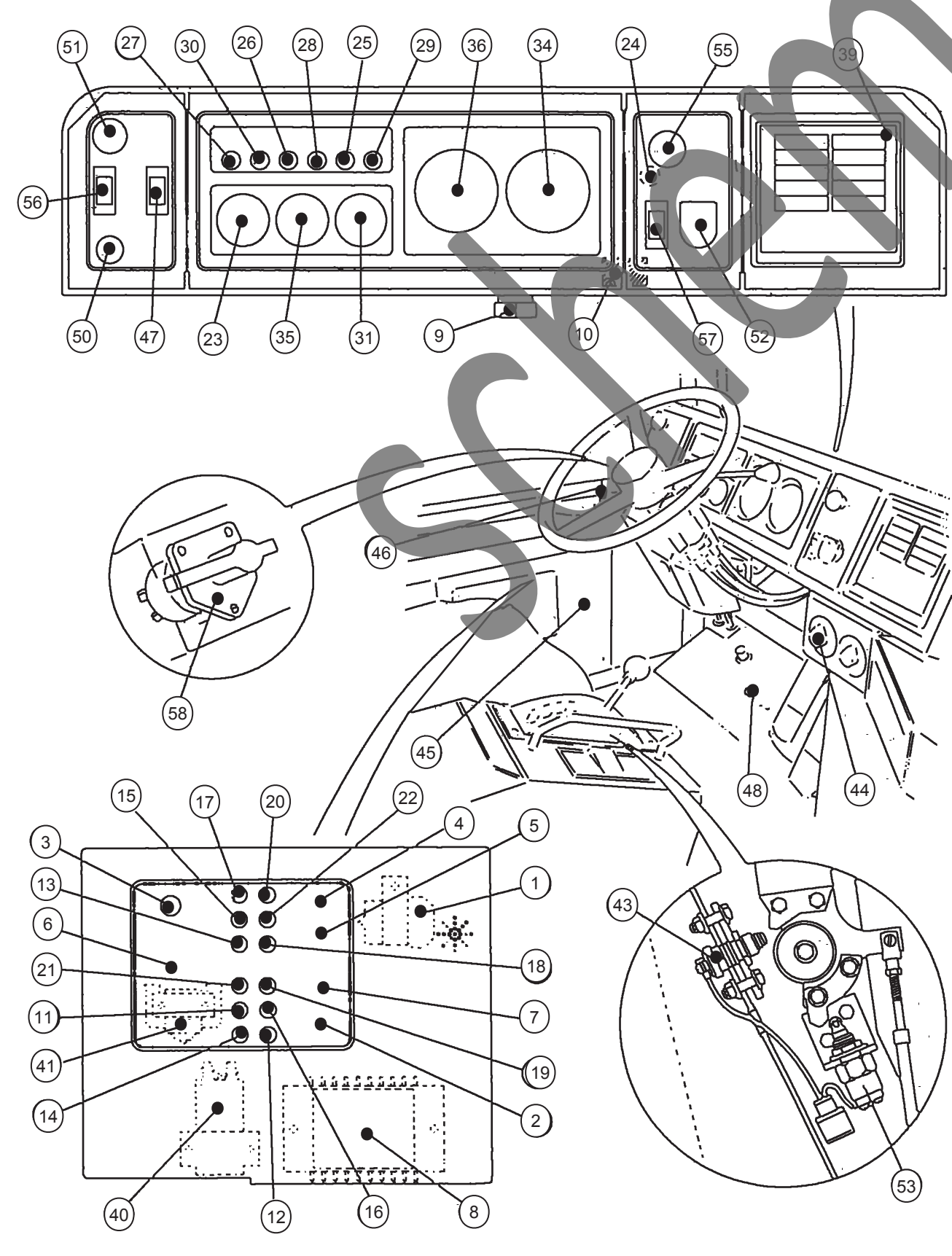
Engine and Transmission - Right Side



Engine and Transmission - Left Side

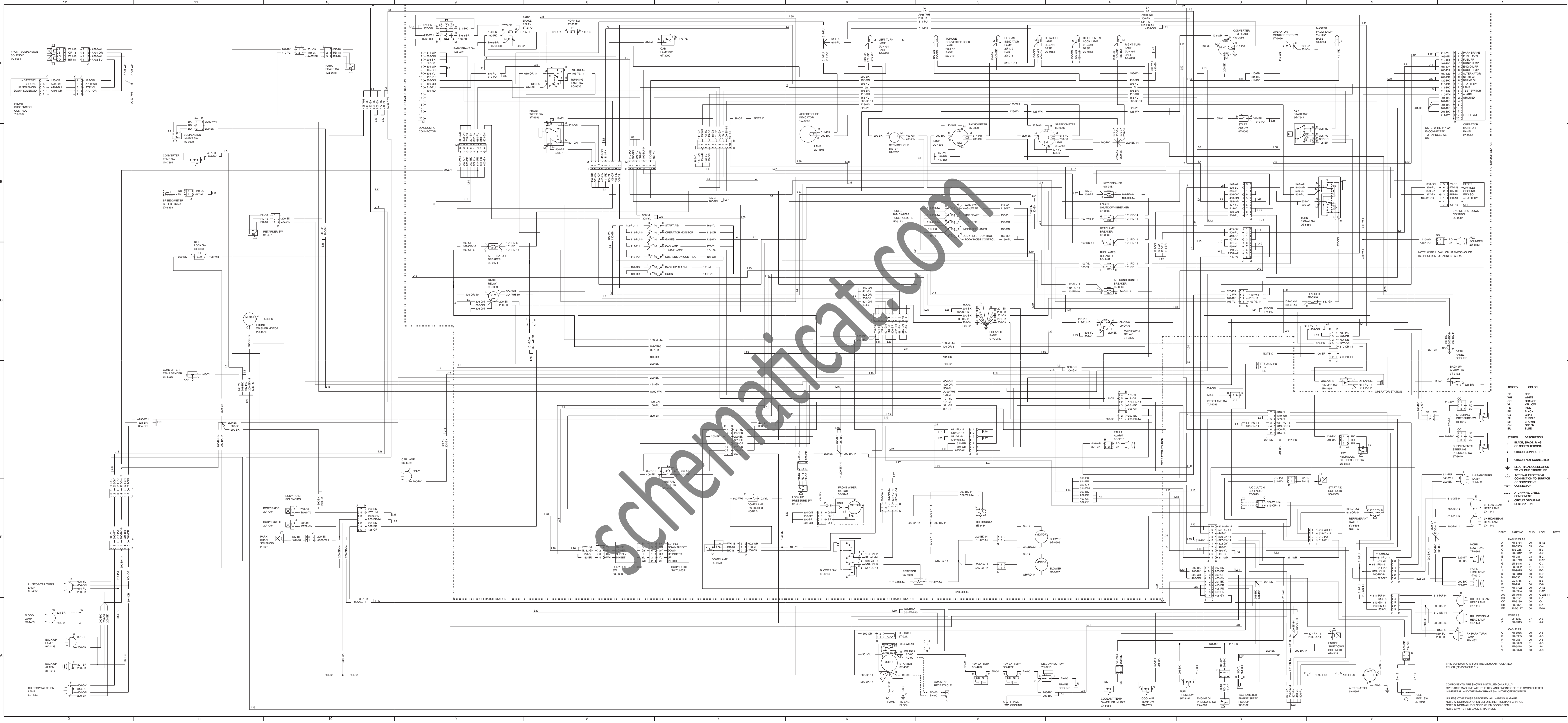


Operators Station



Circuit Number Chart

Circuit Number	Color	Power Distribution Circuits	Circuit Number	Color	Monitoring Circuits
101	RD	BATTERY	415	GN	OPERATOR MON PANEL TEST SW.
102	BU	HEAD LAMP	417	GY	PRIMARY STEERING PUMP
103	YL	DOME/DASH/PARK/TAIL LAMP			PRESSURE SW. TO EMS
105	BR	KEY SWITCH	419	YL	OPERATOR MON PANEL PARK BRAKE
107	WH	ENGINE SHUTDOWN CONTROL			OPERATOR MON PANEL BRAKE PRESSURE
109	OR	ALTERNATOR OUTPUT (+) TERM.	432	PK	OPERATOR MON PANEL BRAKE PRESSURE
112	PU	MAIN POWER RELAY OUTPUT	443	YL	POWER TRAIN TEMP GAUGE
113	OR	OPERATOR MONITOR PANEL	449	BU	SPEED SENDER
114	GN	WARNING HORN (FORWARD)	450	YL	TACOMETER SENDER(+)
118	GY	WINDSHIELD WIPER SW. (FRONT)	451	BR	TACOMETER SENDER(-)
121	YL	BACK UP ALARM/LAMP	454	GN	RETARDER INDICATOR LAMP
123	WH	GAUGES	459	GN	FUEL LEVEL SENDER
124	GN	HEAT/ AIR CONDITIONER SW.	477	GN	SPEEDO PROBE
125	OR	SUSPENSION FUSE TO SUSPENSION	490	GN	LOCK UP INDICATOR LAMP
130	GN	INDICATOR LAMPS	498	WH	DIFF LOCK INDICATOR LAMP
160	BU	BODY HOIST FUSE TO SOLENOIDS			
165	YL	START AID FEED			<b>ACCESSORY CIRCUITS</b>
173	YL	WORK/STOP LAMP	500	BR	WIPER - FRONT (PARK)
190	PK	FUSE TO PARK BRAKE SW.	501	GN	WIPER - FRONT (LOW)
199	OR	FUSE TO RETARDER SW.	502	OR	WIPER - FRONT (HIGH)
			506	PU	WASHER-FRONT
			513	OR	AIR CONDITIONER COMPRESSOR
			515	GY	BLOWER MOTOR (HIGH)
			516	GN	BLOWER MOTOR (MEDIUM)
			517	BU	BLOWER MOTOR (LOW)
			521	YL	AIR CONDITIONER SW. TO REFRIGERANT SW.
			522	WH	AIR CONDITIONER COMPRESSOR TO THERMOSTAT SW.
			537	GN	TURN SIGNAL SW TO FLASHER
			539	BU	TURN SIGNAL INDICATOR BASIC/ RIGHT
			540	WH	TURN SIGNAL INDICATOR BASIC/ LEFT
					<b>LIGHTING CIRCUITS</b>
			602	WH	DOME LAMP
			604	OR	STOP LAMP
			605	YL	TURN LAMP - LEFT
			606	GY	TURN LAMP - RIGHT
			610	OR	HEAD LAMP BASIC
			611	PU	HEAD LAMP HIGH
			614	PU	PARK/TAIL/DASH LAMP
			619	GN	HEAD LAMP - LOW
			624	YL	WORK LAMP
					<b>CONTROL CIRCUITS</b>
403	GN	ALTERNATOR (R) TERMINAL	706	BR	TRANSMISSION RETARDER SW.
405	GY	OPERATOR MON PANEL OIL PRESS.	A790	WH	SUSPENSION INHIBIT SW.
406	PU	OPERATOR MON PANEL COOLANT TEMPERATURE	A791	OR	DOWN SOL. - FRONT SUSPENSION
407	PK	OPERATOR MON PANEL CONVERTER/ RETARDER OIL TEMPERATURE	A792	BU	UP SOL. - FRONT SUSPENSION
409	OR	OPERATOR MON PANEL NEUTRAL	A958	WH	PARK BRAKE SOL.
410	WH	OPERATOR MON PANEL FAULT ALARM	B761	YL	BODY RAISE SOL.
411	PK	OPERATOR MON PANEL MASTER FAULT/LAMP	B762	GN	BODY LOWER SOL.
413	BR	OPERATOR MON. PANEL FUEL PRESSURE			



ABBREV	COLOR
RD	RED
WH	WHITE
OR	ORANGE
YL	YELLOW
PK	PINK
BL	BLACK
GR	GRAY
BLU	BLUE
BR	BROWN
GN	GREEN
BU	BLUE

SYMBOL	DESCRIPTION
○	BLANK SPACE, BOWL, OR SCREW TERMINAL
●	CIRCUIT CONNECTED
+	CIRCUIT NOT CONNECTED
⊕	ELECTRICAL CONNECTION TO FRAME STRUCTURE
⊖	INTERNAL ELECTRICAL CONNECTION TO SURFACE
⊙	OF COMPONENT
⊚	CONNECTOR
---	ATCH WIRE CABLE, COMPONENT
LA	CIRCUIT GROUPING DESIGNATION

IDENT	PART NO.	CHG	LOC	NOTE
HARNESS AS				
A	70-876	00	B-12	
B	70-876	00	C-4	
C	70-876	00	D-2	
D	70-876	00	E-2	
E	70-876	00	F-2	
F	70-876	00	G-2	
G	70-876	00	H-2	
H	70-876	00	I-2	
I	70-876	00	J-2	
J	70-876	00	K-2	
K	70-876	00	L-2	
L	70-876	00	M-2	
M	70-876	00	N-2	
N	70-876	00	O-2	
O	70-876	00	P-2	
P	70-876	00	Q-2	
Q	70-876	00	R-2	
R	70-876	00	S-2	
S	70-876	00	T-2	
T	70-876	00	U-2	
U	70-876	00	V-2	
V	70-876	00	W-2	
W	70-876	00	X-2	
X	70-876	00	Y-2	
Y	70-876	00	Z-2	

THIS SCHEMATIC IS FOR THE 02000 ARTICULATED TRUCK (SEE 02000 CH).

COMPONENTS ARE SHOWN INSTALLED ON A FULLY OPERABLE MACHINE WITH THE KEY AND ENGINE OFF. ALL INTERNAL AND THE PARK BRAKE SW BY THE OFF POSITION.

UNLESS OTHERWISE SPECIFIED: ALL WIRE IS GAGE NOTE A. NORMALLY OPEN BEFORE REPRESENT CHARGE NOTE B. NORMALLY CLOSED WHEN DOOR OPEN NOTE C. WIRE THE BACK IN HARNESS