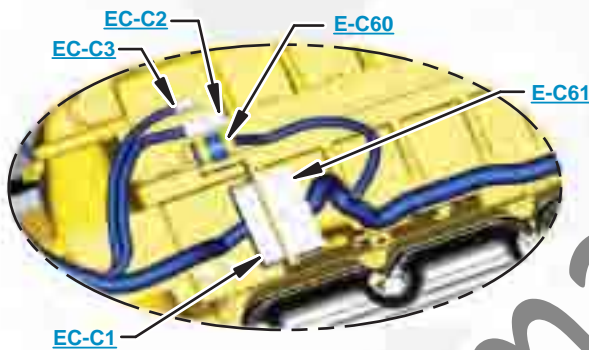




This document is best viewed at a screen resolution of 1024 X 768.

To set your screen resolution do the following:
RIGHT CLICK on the **DESKTOP**.
 Select **PROPERTIES**.
CLICK the **SETTINGS TAB**.
MOVE THE SLIDER under **SCREEN RESOLUTION** until it shows **1024 X 768**.
CLICK OK to apply the resolution.

The Bookmarks panel will allow you to quickly navigate to points of interest.



Click on any text that is BLUE and underlined. These are hyperlinks that can be used to navigate the schematic and machine views.

VIEW ALL CALLOUTS

When only one callout is showing on a machine view this button will make all of the callouts visible. This button is located in the top right corner of every machine view page.

HOTKEYS (Keyboard Shortcuts)		
	FUNCTION	KEYS
	Zoom In	"CTRL" / "+"
	Zoom Out	"CTRL" / "-"
	Fit to Page	"CTRL" / "0" (zero)
	Hand Tool	"SPACEBAR" (hold down)
	Find	"CTRL" / "F"



Schematic

D6T and D6T OEM Track-Type Tractor Hydraulic System

KSB1-UP
ZJB1-UP
JZC1-UP
DTD1-UP
EJJ1-UP
SLJ1-UP
GMK1-UP
RRK1-UP
TSM1-UP
WLM1-UP
PLR1-UP
JRW1-UP
RCW1-UP

SchematicCat.com

COMPONENT LOCATION



Description	Part Number	Machine Location	Schematic Location
Accumulator Gp - Pilot Oil	200-0750	1	C-2
Core As - Oil Cooler (Hydraulic)	321-7949	2	C-1
Cylinder Gp - Blade Angle	344-5133	3	E-8
Cylinder Gp - Blade Lift (XL/XW)	349-6046	4	F-8
(LGP)	349-6044		
Cylinder Gp - Blade Tilt (Tilt)	233-9134	5	D-8
(Angle Tilt)	227-0841		
Cylinder Gp - Ripper Lift	325-5723	6	C-8
Filter Gp - Oil (Implement Pilot)	334-5261	7	C-3
Filter Gp - Oil (Steering)	177-6979	8	E-3
Manifold Gp - Control (Implement Pilot Pressure)	226-4751	9	C-2
Manifold Gp - Control (Load Sense)	325-1699	10	B-2
Manifold Gp - Control (Low Fan Speed)	388-5493	11	D-1
Manifold Gp - Valve (Ripper Lower)	369-2637	12	B-8
Motor Gp - Piston (Hydraulic Fan)	340-2123	13	D-1
Motor Gp - Piston (Reversing Fan)	340-2124	14	F-1
Motor Gp - Steering	325-9776	15	F-4
Pump Gp - Piston (Hydraulic Fan)	325-9774	16	D-2
Pump Gp - Piston (Implement)	325-9786	17	D-2
Pump Gp - Steering and Charge	325-9773	18	F-3
Sensor Gp - Pressure (Implement Pump)	296-5270	19	C-2
Sensor Gp - Temperature (Hydraulic Oil)	234-5013	20	B-3
Switch Gp - Pressure (Oil Filter Bypass)	253-2673	21	E-2
Tank and Filter Gp - Hydraulic	330-6806	22	A-3
Valve As - Cooler Bypass	4E-1437	23	E-1
Valve Gp - Bank 2 (Blade)	327-0858	24	D-3
Valve Gp - Bank 3 (Blade, Ripper)	334-8698	25	F-6
Valve Gp - Bank 3 (VPAT Blade)	325-0387	26	F-5
Valve Gp - Bank 4 (VPAT Blade, Ripper)	326-9285	27	C-7
Valve Gp - Bank 4 (Blade, Aux.)	335-5276	28	C-5
Valve Gp - Breaker Relief	191-5439	29	B-3
Valve Gp - Counterbalance (Ripper)	346-0493	30	B-8
Valve Gp - Diverter (Rear)	180-8569	31	A-8
Valve Gp - Fan Reversing	162-2191	32	F-2
Valve Gp - Quick Drop	336-7287	33	F-8
Valve Gp - Relief (Steering lines)	198-9219	34	E-3

Check Part Numbers in the Parts Manuals for your Specific Machine

TAP LOCATION

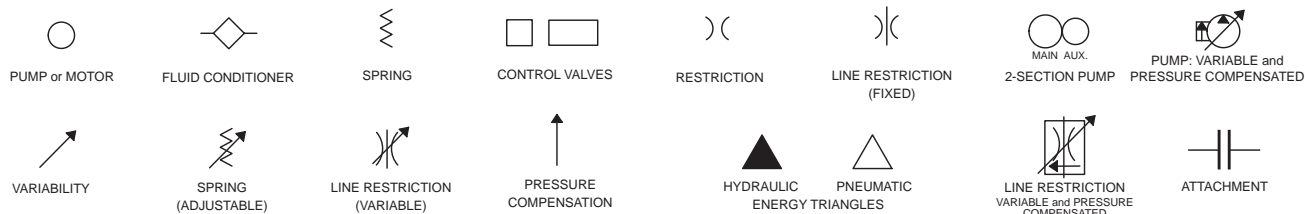


Tap Number	Description	Schematic Location
CPG	Accumulator Pressure	C-2
K	Charge Filter Inlet Pressure	E-3
H	Charge Filter Outlet Pressure	E-3
HA	Implement Pump - Discharge	C-2
HB	Implement Pump - Signal	E-4
CP	Pilot Valve Supply	C-2
SOS	Oil Sampling Port	C-2
HPCD	Impl Pump - Case Return (Backfill)	D-2
HFPD	Hydraulic Fan Pump Discharge	D-2
FC	Fan Motor - Case Return (Backfill)	D-1
HFCD	Reversing Fan Motor - Case Return (Backfill)	F-1
HC	Left Steer Loop - At Motor	E-4
HD	Right Steer Loop - At Motor	F-4
HPDL	Hyd. Pilot Press. - Blade Lower	D-4
		F-7
		C-7
		F-5
HPDR	Hyd. Pilot Press. - Blade Raise	C-5
		D-3
		F-6
		C-6
HPTL	Hyd. Pilot Press. - Tilt Left	F-5
		C-5
		D-3
		E-6
HPTR	Hyd. Pilot Press. - Tilt Right	C-6
		E-5
		B-5
		D-4
HPAR	Hyd. Pilot Press. - Angle Right	E-7
		C-7
HPAL	Hyd. Pilot Press. - Angle Left	E-5
		B-5
		B-7
HPRR	Hyd. Pilot Press. - Ripper Raise	D-5
		A-7
HPRL	Hyd. Pilot Press. - Ripper Lower	B-6
HPA1	Hyd. Pilot Press. - Aux 1	D-5
HPA2	Hyd. Pilot Press. - Aux 2	A-5
HPA3	Hyd. Pilot Press. - Aux 3	A-5
HPA4	Hyd. Pilot Press. - Aux 4	A-5

FLUID POWER SYMBOLS



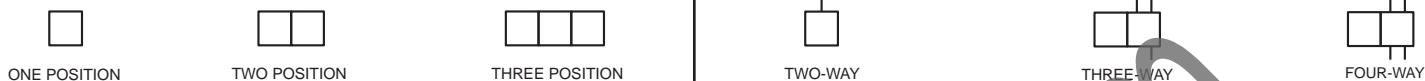
BASIC COMPONENT SYMBOLS



VALVE ENVELOPES

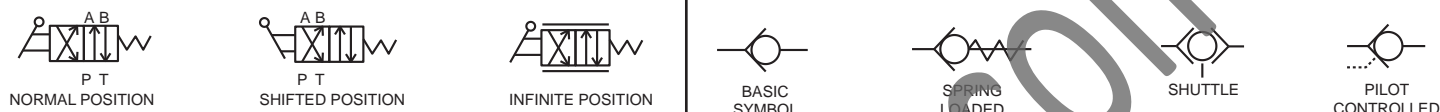
VALVES

VALVE PORTS



CONTROL VALVES

CHECK VALVES



FLUID STORAGE RESERVOIRS



MEASUREMENT

ROTATING SHAFTS



COMBINATION CONTROLS



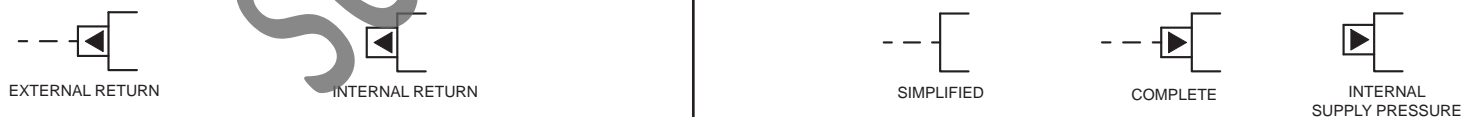
MANUAL CONTROL SYMBOLS



RELEASED PRESSURE

PILOT CONTROL SYMBOLS

REMOTE SUPPLY PRESSURE



ACCUMULATORS

CROSSING AND JOINING LINES

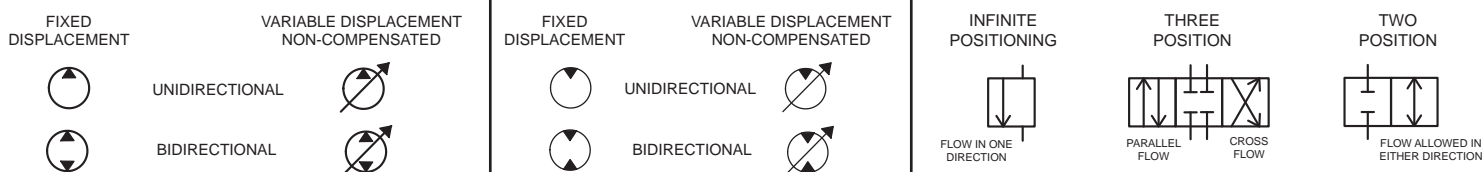
HYDRAULIC AND PNEUMATIC CYLINDERS



HYDRAULIC PUMPS

HYDRAULIC MOTORS

INTERNAL PASSAGEWAYS



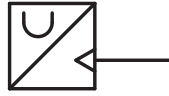
ELECTRICAL SYMBOLS



Hydraulic Symbols (Electrical)



Transducer
(Fluid)



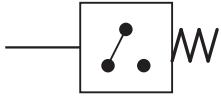
Transducer
(Gas / Air)



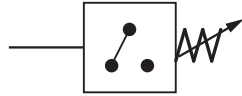
Generator



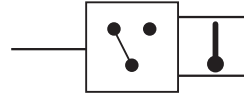
Electric Motor



Pressure Switch



Pressure Switch
(Adjustable)

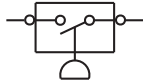


Temperature Switch

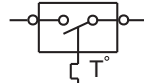


Electrical Wire

Electrical Symbols (Electrical)



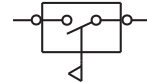
Pressure
Symbol



Temperature
Symbol



Level
Symbol

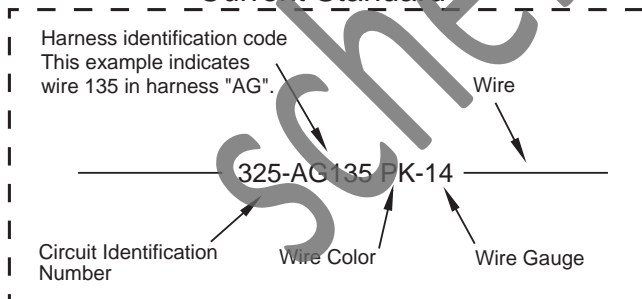


Flow
Symbol

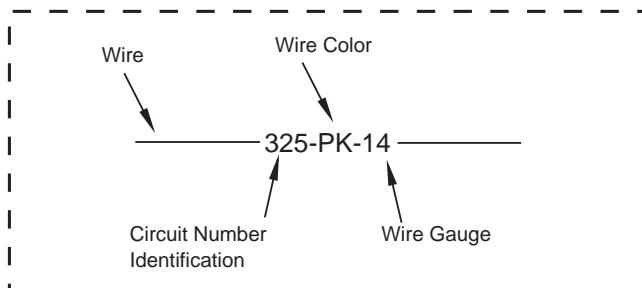
Wire Number Identification Codes

Electrical Schematic Example

Current Standard

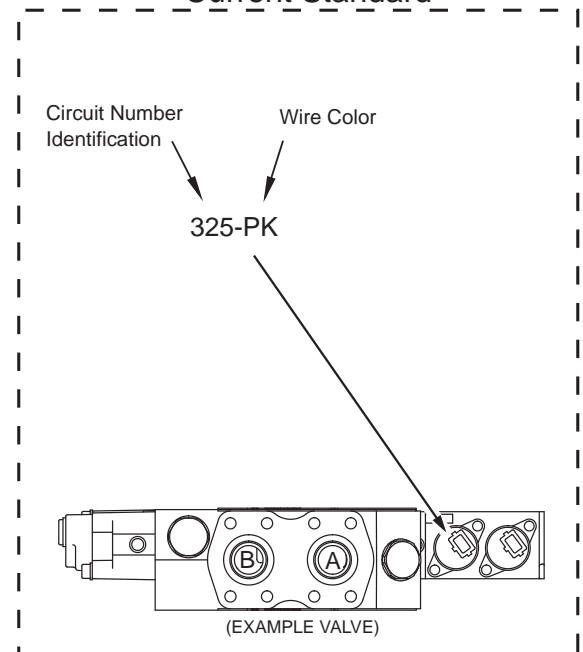


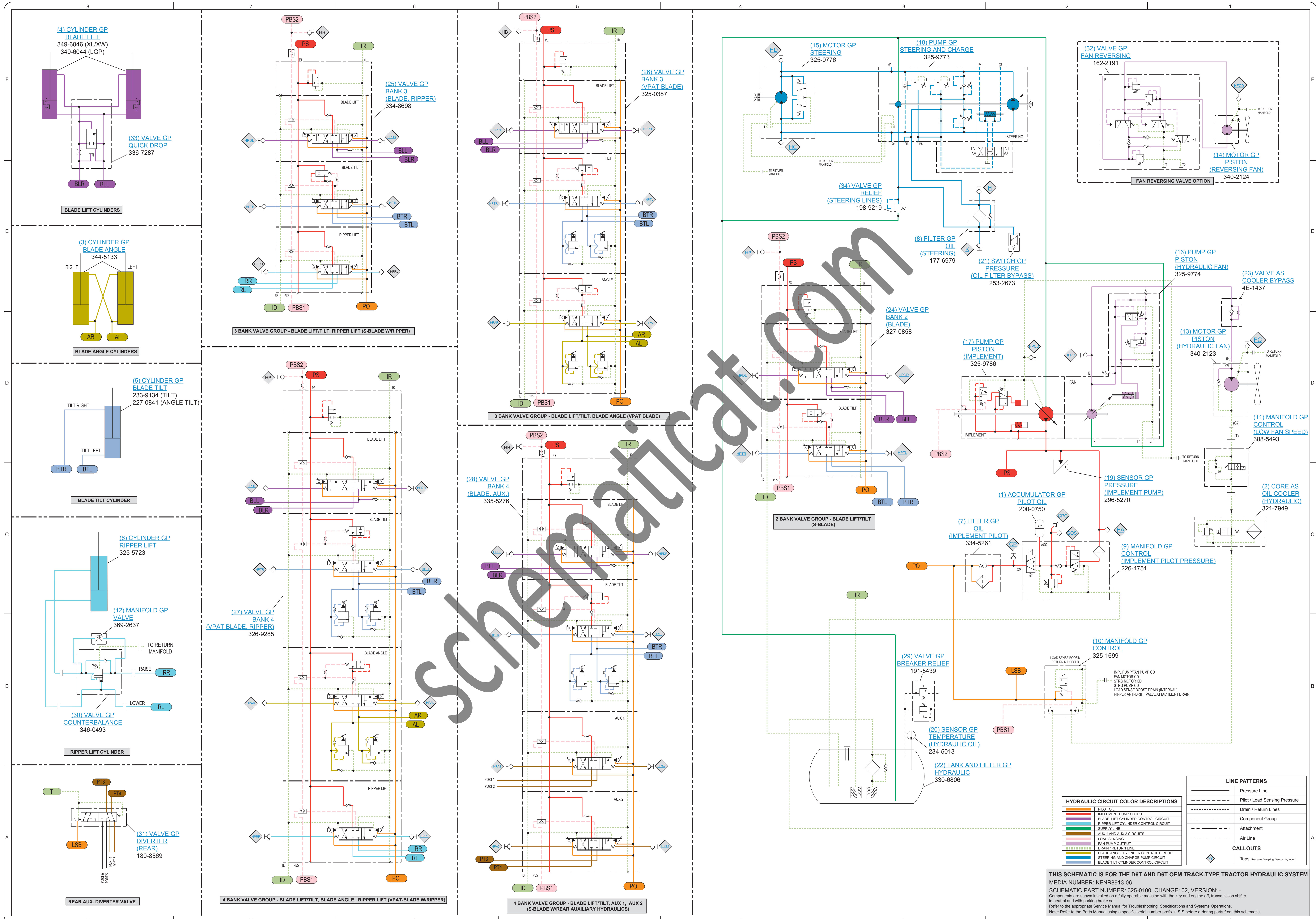
Previous Standard



Hydraulic Schematic Example

Current Standard





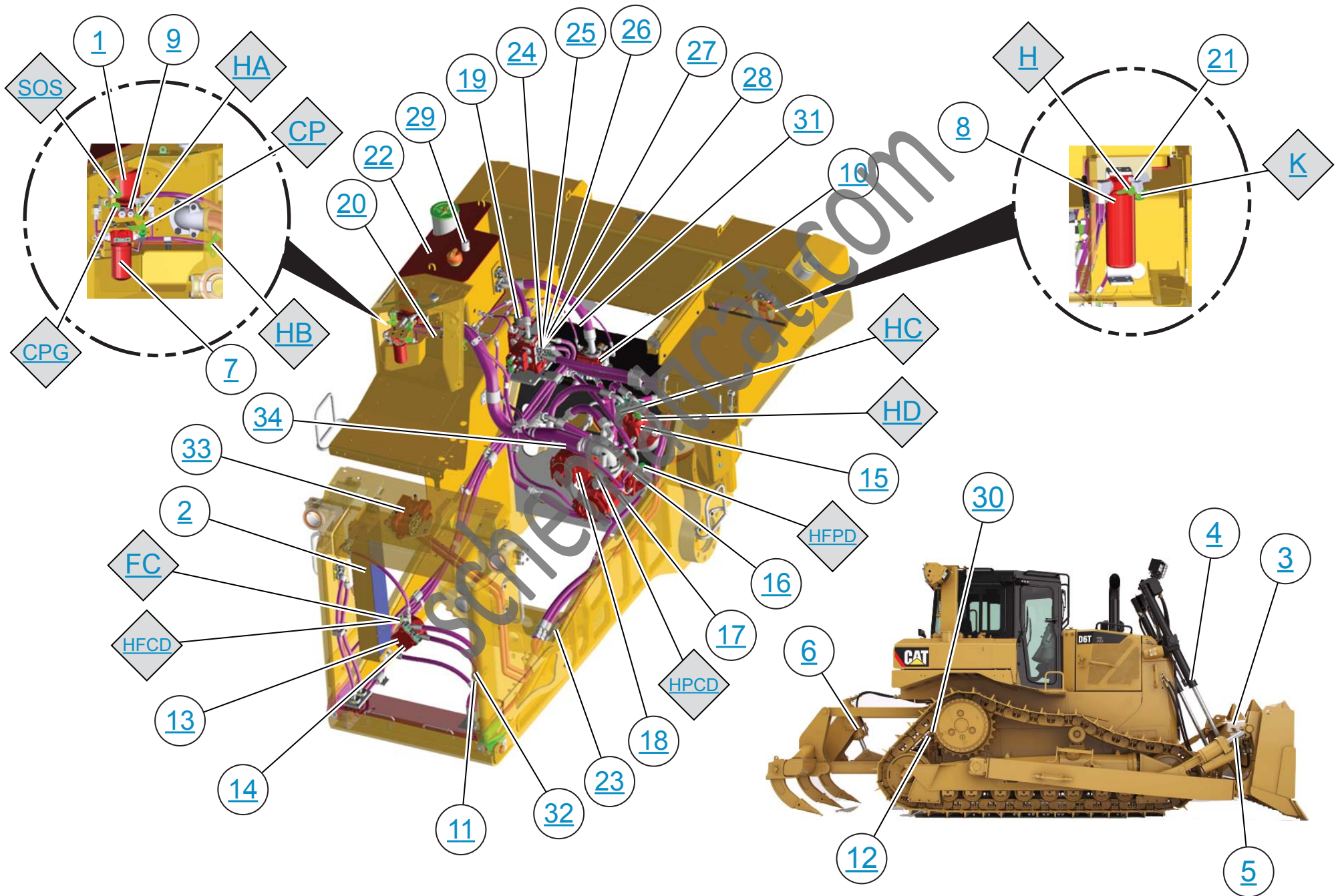
HYDRAULIC CIRCUIT COLOR DESCRIPTIONS	
PILOT OIL	
IMPLEMENT PUMP OUTPUT	
BLADE LIFT CYLINDER CONTROL CIRCUIT	
RIPPER LIFT CYLINDER CONTROL CIRCUIT	
SUPPLY LINE	
AUX 1 AND AUX 2 CIRCUITS	
LOAD SENSING	
FAN PUMP OUTPUT	
DRAIN/RETURN LINE	
BLADE ANGLE CYLINDER CONTROL CIRCUIT	
STEERING AND CHARGE PUMP CIRCUIT	
BLADE TILT CYLINDER CONTROL CIRCUIT	

LINE PATTERNS	
Pressure Line	
Pilot / Load Sensing Pressure	
Drain / Return Lines	
Component Group	
Attachment	
Air Line	

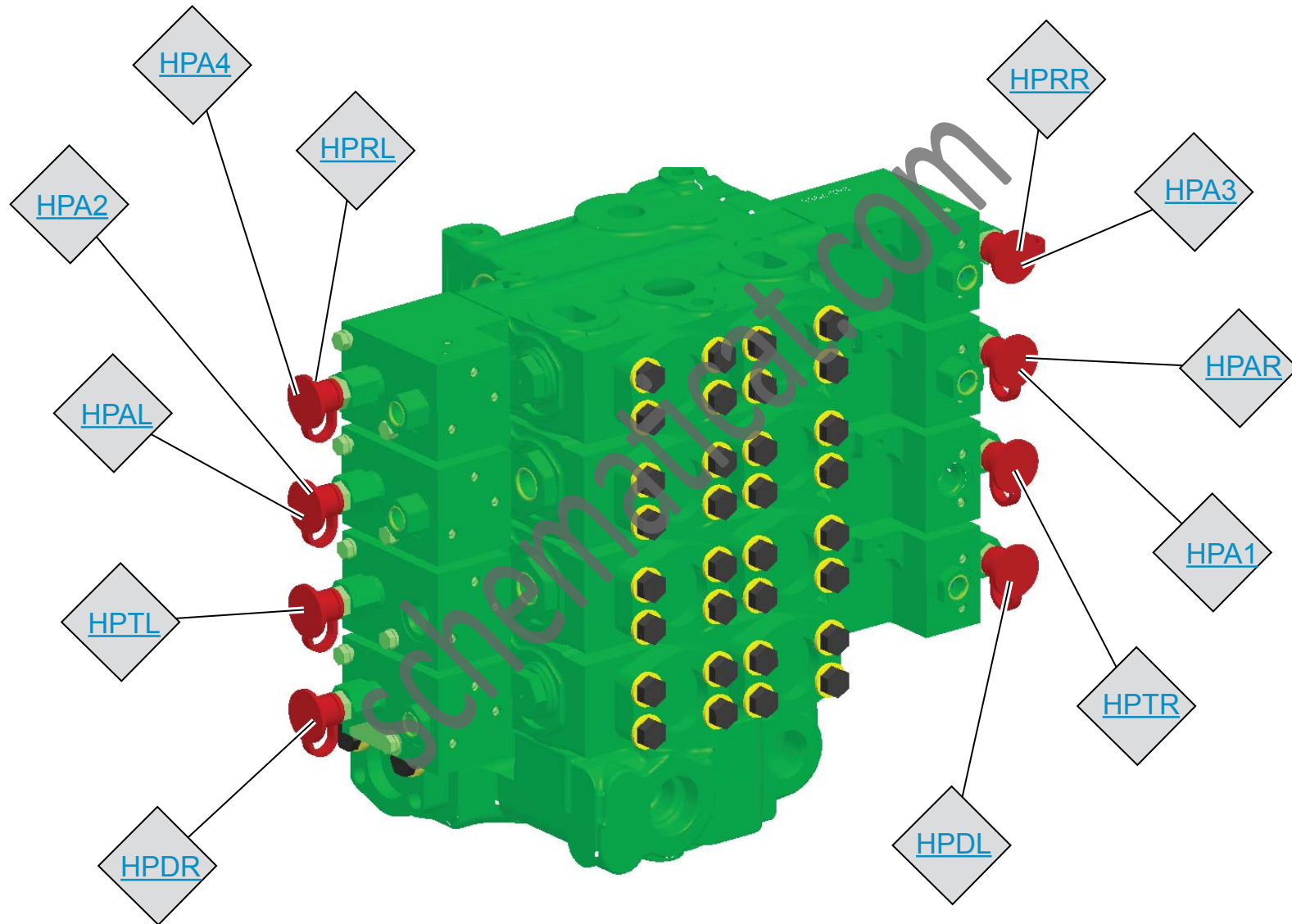
CALLOUTS	
Taps (Pressure, Steering, Sensor, etc.)	

THIS SCHEMATIC IS FOR THE D6T AND D6T OEM TRACK-TYPE TRACTOR HYDRAULIC SYSTEM
 MEDIA NUMBER: KENR8913-06
 SCHEMATIC PART NUMBER: 325-0100, CHANGE: 02, VERSION: -
 Components are shown installed on a fully operable machine with the key and engine off, transmission shifter in neutral and with parking brake set.
 Refer to the appropriate Service Manual for Troubleshooting, Specifications and Systems Operations.
 Note: Refer to the Parts Manual using a specific serial number prefix in SIS before ordering parts from this schematic.

MACHINE COMPONENT LOCATION



FOUR BANK VALVE



TWO BANK VALVE

