

Schematic

D7R Series II Track-Type Tractor Hydraulic System

AFG1-Up (Machine)
BPK1-Up (Machine)
BNM1-Up (Machine)
BRP1-Up (Machine)
ACS1-Up (Machine)
ADW1-Up (Machine)

Finger Tip Control (FTC)

© 2002 Caterpillar
All Rights Reserved

Printed in U.S.A.

SchematicCat.com

Hydraulic System (with Ripper Arrangement)

Table 1

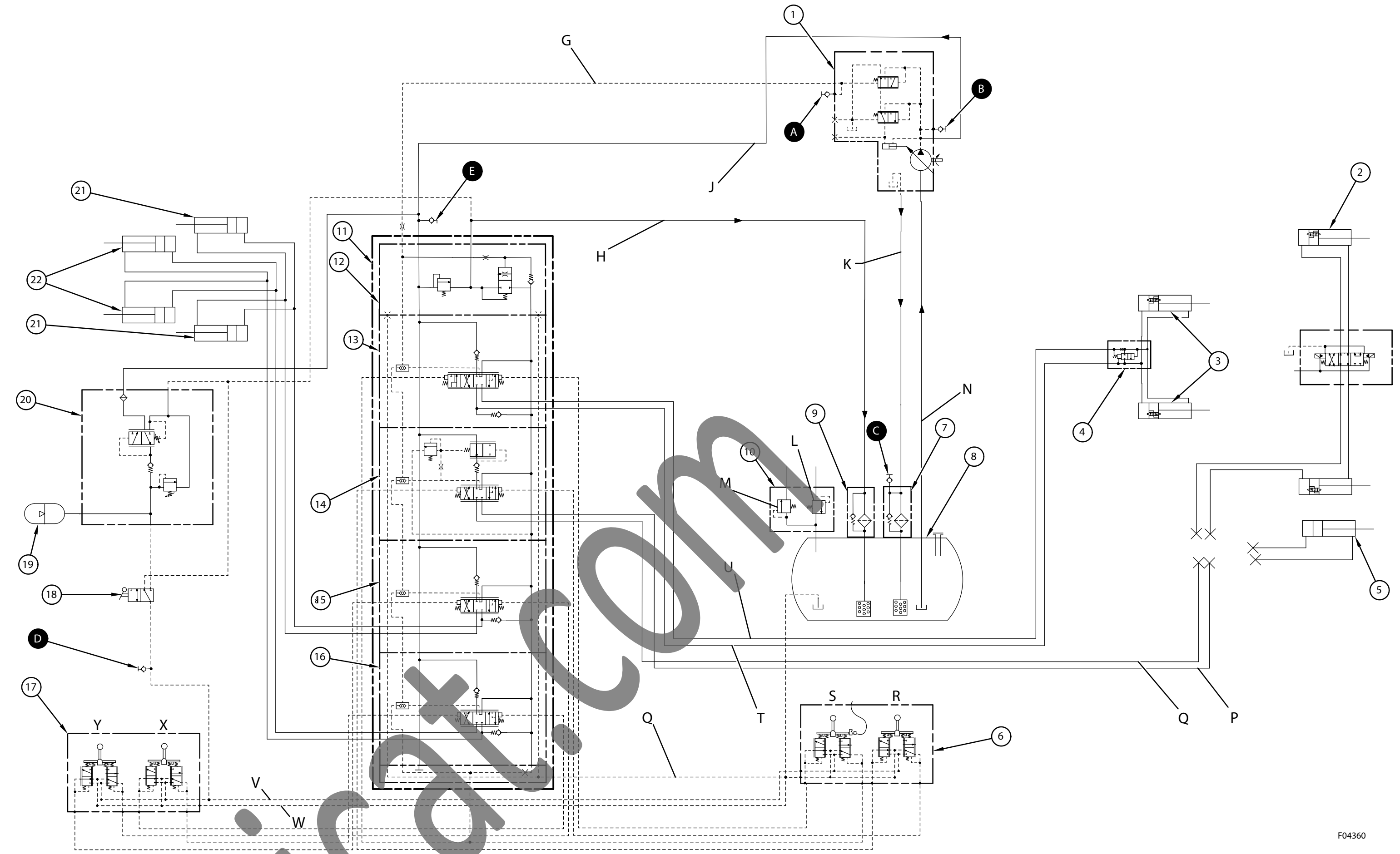
| Hydraulic System (Components) | |
|-------------------------------|--|
| Item | Description |
| 1 | Hydraulic Pump – Piston |
| 2 | Dual Tilt Cylinders and Lines (Option) |
| 3 | Bulldozer Lift Cylinders |
| 4 | Quick Drop Valve |
| 5 | Single Tilt Cylinder |
| 6 | Pilot Valve – Bulldozer |
| 7 | Oil Filter – Case and Drain |
| 8 | Hydraulic Tank |
| 9 | Oil Filter (Implement Return Port) |
| 10 | Breather Valve |
| 11 | Valve Stack |
| 12 | Main Relief Valve |
| 13 | Bulldozer Lift Control Valve |
| 14 | Bulldozer Tilt Control Valve |
| 15 | Ripper Lift Control Valve |
| 16 | Ripper Tip Control Valve |
| 17 | Pilot Valve (Ripper) |
| 18 | Shutoff Valve (Ball Valve) |
| 19 | Accumulator (Pilot Circuit) |
| 20 | Pressure Reducing Valve |
| 21 | Ripper Lift Cylinders |
| 22 | Ripper Tip Cylinders |

Table 2

| Hydraulic System (Lines and Pilot Valves) | |
|---|------------------------------|
| Item | Description |
| G | Signal to Pump |
| H | Return |
| J | Discharge (Pump) |
| K | Flushing Line (Pump) |
| L | Air Vent |
| M | Air Relief |
| N | Suction |
| P | Tilt Left |
| Q | Tilt Right |
| R | Bulldozer Tilt (Pilot Valve) |
| S | Bulldozer Lift (Pilot Valve) |
| T | Lift Cylinder (Lower) |
| U | Lift Cylinder (Raise) |
| V | Pilot Supply |
| W | Pilot Drain |
| X | Ripper Tip (Pilot Valve) |
| Y | Ripper Raise (Pilot Valve) |

Table 3

| Hydraulic System (Pressure Taps) | |
|----------------------------------|---|
| Item | Description |
| A | Implement Pump Signal (Pressure Tap on Manifold under Floorplates, Labeled HA) |
| B | Implement Pump Discharge (Pressure Tap at Pump) |
| C | Case Drain Return (Pressure Tap at Filter) |
| D | Pilot Supply (Pressure Tap after Pressure Reducing Valve) |
| E | Implement Pump Discharge (Pressure Tap on Manifold under Floorplates, Labeled HB) |



F04360

Hydraulic System (with Winch Arrangement)

Table 4

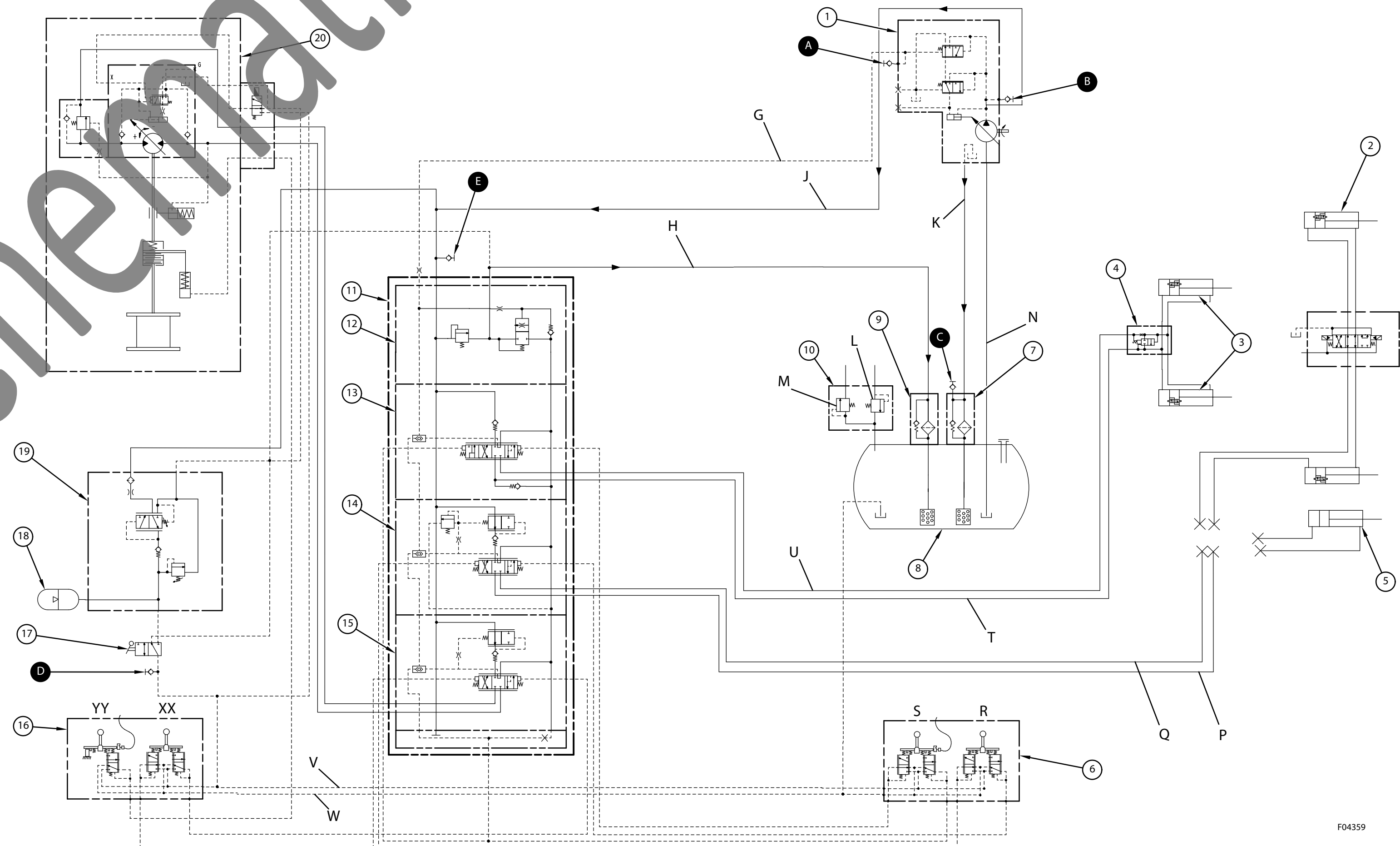
| Hydraulic System (Components) | |
|-------------------------------|--|
| Item | Description |
| 1 | Hydraulic Pump – Piston |
| 2 | Dual Tilt Cylinders and Lines (Option) |
| 3 | Bulldozer Lift Cylinders |
| 4 | Quick Drop Valve |
| 5 | Single Tilt Cylinder |
| 6 | Pilot Valve – Bulldozer |
| 7 | Oil Filter – Case and Drain |
| 8 | Hydraulic Tank |
| 9 | Oil Filter (Implement Return Port) |
| 10 | Breather Valve |
| 11 | Valve Stack |
| 12 | Main Relief Valve |
| 13 | Bulldozer Lift Control Valve |
| 14 | Bulldozer Tilt Control Valve |
| 15 | Winch Control Valve |
| 16 | Pilot Valve (Winch) |
| 17 | Shutoff Valve (Ball Valve) |
| 18 | Accumulator (Pilot Circuit) |
| 19 | Pressure Reducing Valve |
| 20 | Winch |

Table 5

| Hydraulic System (Lines and Pilot Valves) | |
|---|-------------------------------|
| Item | Description |
| G | Signal to Pump |
| H | Return |
| J | Discharge (Pump) |
| K | Flushing Line (Pump) |
| L | Air Vent |
| M | Air Relief |
| N | Suction |
| P | Tilt Left |
| Q | Tilt Right |
| R | Bulldozer Tilt (Pilot Valve) |
| S | Bulldozer Lift (Pilot Valve) |
| T | Lift Cylinder (Lower) |
| U | Lift Cylinder (Raise) |
| V | Pilot Supply |
| W | Pilot Drain |
| XX | Winch (Pilot Valve) |
| YY | Winch Freespool (Pilot Valve) |

Table 6

| Hydraulic System (Pressure Taps) | |
|----------------------------------|---|
| Item | Description |
| A | Implement Pump Signal (Pressure Tap on Manifold under Floorplates, Labeled HA) |
| B | Implement Pump Discharge (Pressure Tap at Pump) |
| C | Case Drain Return (Pressure Tap at Filter) |
| D | Pilot Supply (Pressure Tap after Pressure Reducing Valve) |
| E | Implement Pump Discharge (Pressure Tap on Manifold under Floorplates, Labeled HB) |



F04359