

Machine Location Item No.	Component Description
22	Brake Retract Gear Pump Section
23	Brake Retract Oil Filter
24	Brake Retract Valve Group
31	Lockup Clutch Valve Group
32	Rear Brake Master Cylinder
33	Slack Adjuster Group For Rear Brakes
34	Parking And Service Brake Group For Left And Right Rear Wheels
36	Hydraulic Tank For Brake Make-up
48	Hydraulic Control Group For Automatic Electronic Traction Aid (AETA) Attachment
49	Check Valve

Schematic

768C Wheel Tractor,
769C Off-Highway Truck &
771C Quarry Truck
Hydraulic Schematic

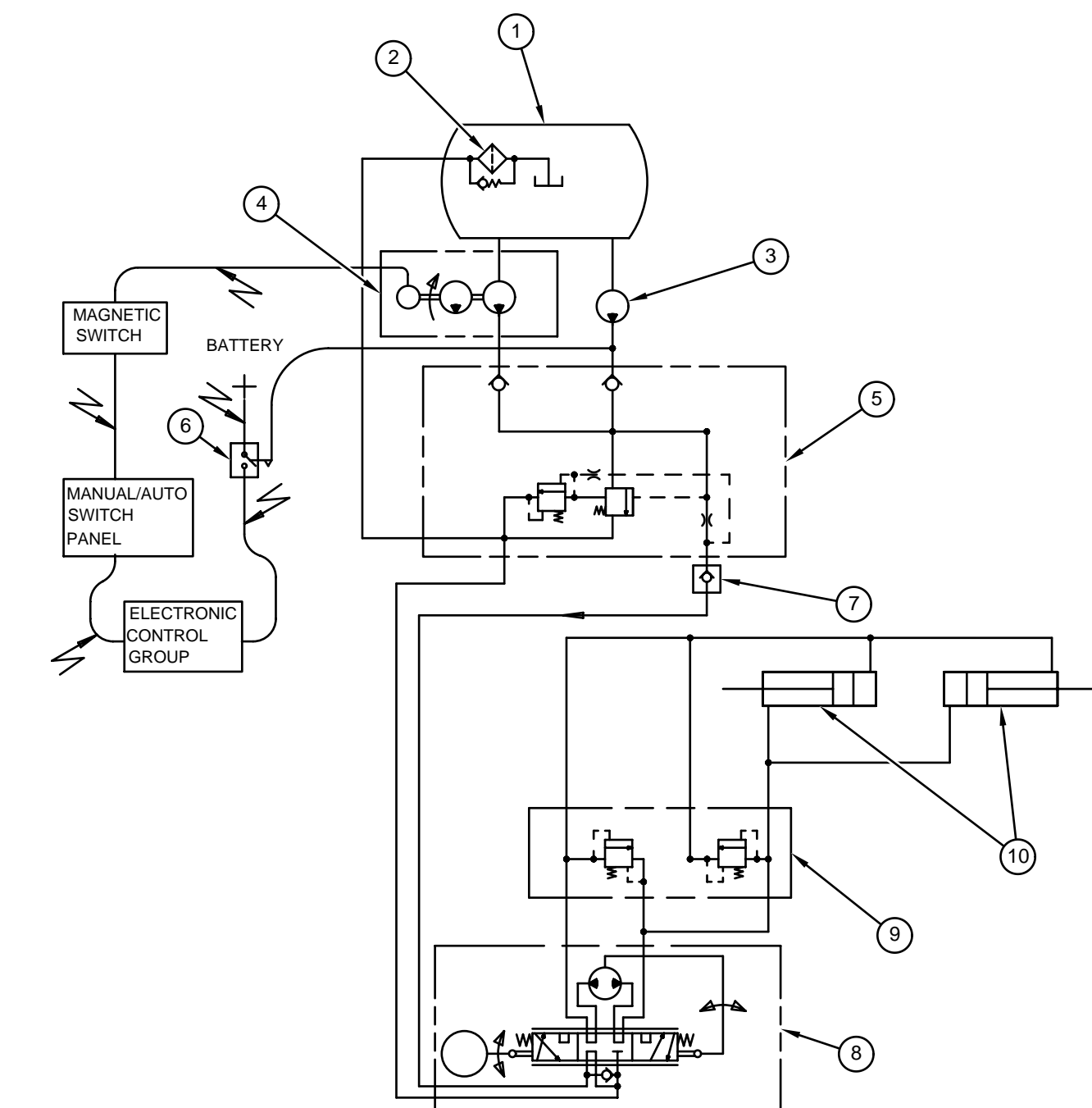
768C: 02X400-Up 769C: 01X6600-Up 771C: 3B J200-Up

D90189

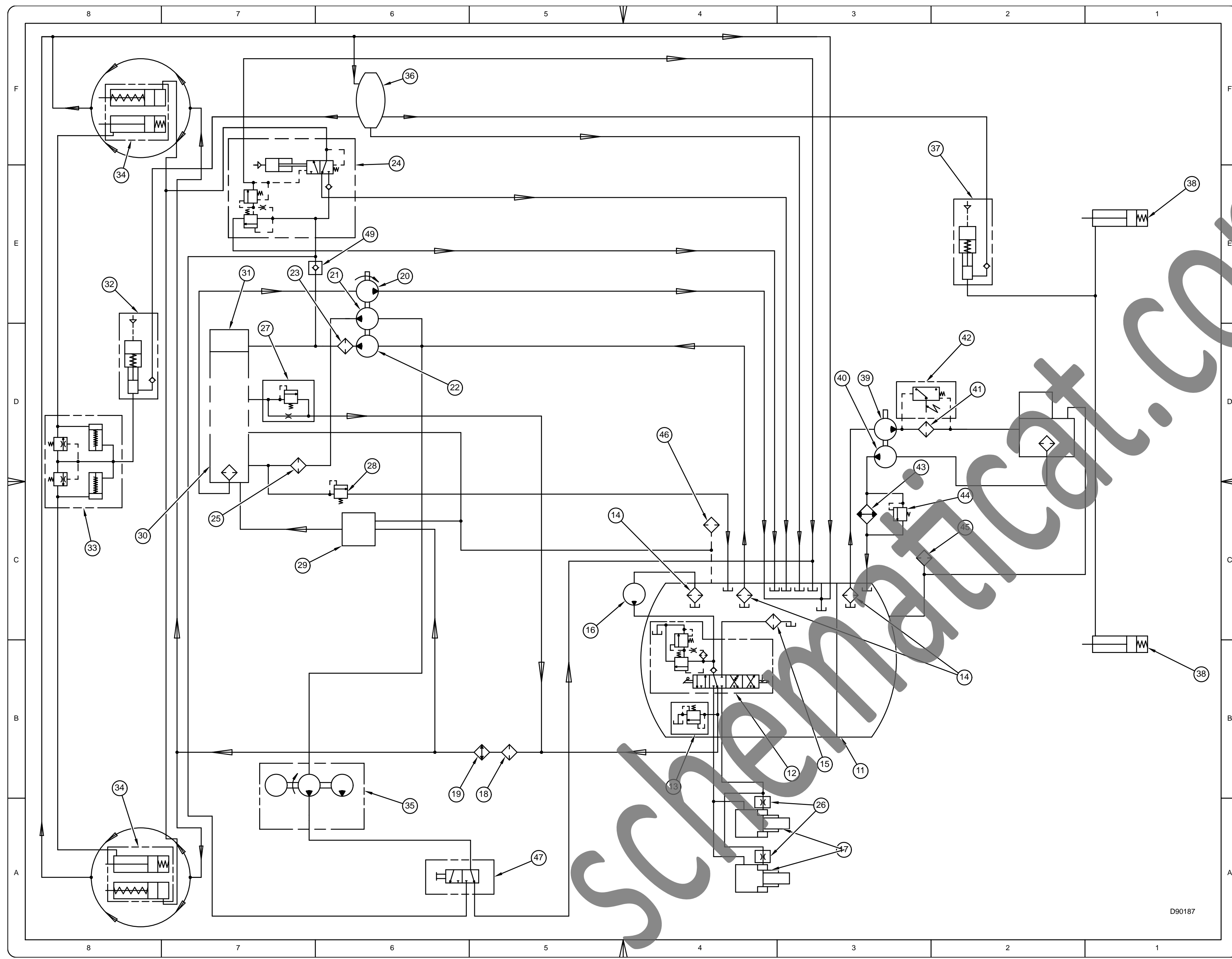
©1997 Caterpillar
All Rights Reserved

Printed in U.S.A.

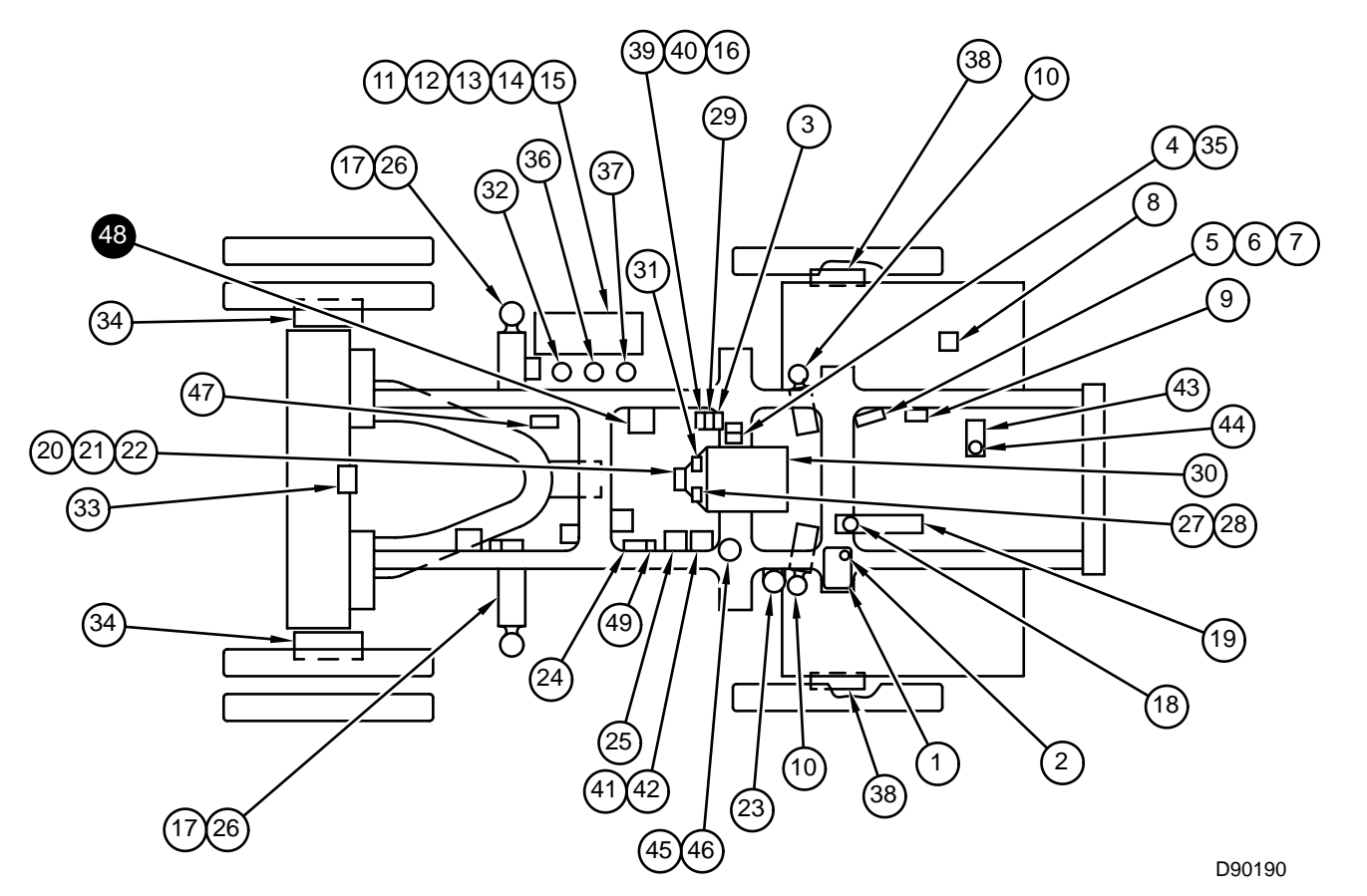
Machine Location Item No.	Component Description
1	Steering Hydraulic Tank Group
2	Steering Hydraulic Tank Filter
3	Steering Gear Pump
4	Electrically Driven Secondary Steering Pump
5	Flow Control Valve Group
6	Flow Switch Assembly
7	Check Valve Group
8	Metering Pump Group
9	Relief Valve Group For Steering Cylinders
10	Steering Cylinder Group



D90188



Hydraulic System For The Power Train, Hoist and Brakes



D90190

Steering Hydraulic System	
Machine Location Item No.	Component Description
1	Steering Hydraulic Tank Group
2	Steering Hydraulic Tank Filter
3	Steering Gear Pump
4	Electrically Driven Secondary Steering Pump
5	Flow Control Valve Group
6	Flow Switch Assembly
7	Check Valve Group
8	Metering Pump Group
9	Relief Valve Group For Steering Cylinders
10	Steering Cylinder Group

Hydraulic System For The Power Train, Hoist And Brakes		
Machine Location Item No.	Component Description	Schematic Location
11	Hydraulic & Transmission Tank	B-3
12	Hoist Control Valve Group	B-4
13	Relief Valve Group	B-4
14	Hydraulic And Transmission Tank Screen Assemblies	C-3, C-4
15	Hydraulic Tank Screen Group	C-4
16	Hoist Gear Pump Group	C-4
17	Hoist Telescoping Cylinder Group	A-4
18	Screen For Oil Cooler	B-5
19	Oil Cooler Core Group	B-5
20	Converter Scavenge Gear Pump Section	E-6
21	Converter Charge Gear Pump Section	E-6
22	Brake Retract Gear Pump Section	D-6
23	Brake Retract Oil Filter	D-6
24	Brake Retract Valve Group	E-7
25	Converter Oil Filter Group	D-7
26	Orifice Plates	A-4
27	Converter Outlet Relief Valve Group	D-7
28	Converter Inlet Relief Valve Group	C-6
29	Pump Drive Group	C-6
30	Torque Converter Group	D-7
31	Lockup Clutch Valve Group	D-7
32	Rear Brake Master Cylinder	D-8
33	Slack Adjuster Group For Rear Brakes	D-8
34	Parking And Service Brake Group For Left And Right Rear Wheels	A-8, F-8
35	Electric Secondary Brake Retract Pump	A-8
36	Hydraulic Tank For Brake Make-up	F-6
37	Front Brake Master Cylinder	E-2
38	Hydraulic Caliper Service Brake Group	B-1, E-1
39	Transmission Charge Gear Pump Section	D-3
40	Transmission Scavenge Gear Pump Section	D-3
41	Transmission Oil Filter Group	D-3
42	Electrical Switch For Transmission Filter Bypass	D-3
43	Oil Cooler Core Assembly	C-3
44	Cooler Inlet Valve Group	C-3
45	Transmission Tank Air Breather	C-3
46	Hydraulic Tank Air Breather	C-4
47	Divertor Valve Group For Manual Parking Brake Retraction	A-5, A-6
48	Hydraulic Control Group For Automatic Electronic Traction Aid (AETA) (Attachment)	D-2
49	Check Valve	E-6

D90187