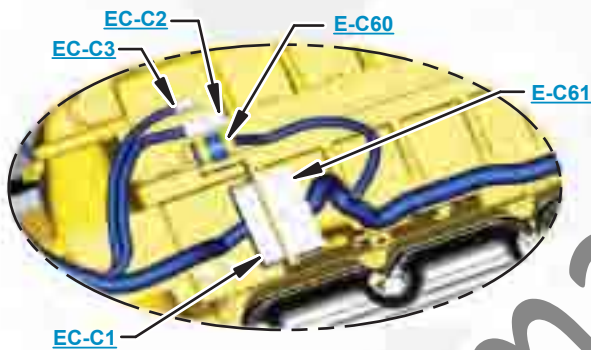


***This document is best viewed at a screen resolution of 1024 X 768.***

To set your screen resolution do the following:  
**RIGHT CLICK** on the **DESKTOP**.  
 Select **PROPERTIES**.  
**CLICK** the **SETTINGS TAB**.  
**MOVE THE SLIDER** under **SCREEN RESOLUTION** until it shows **1024 X 768**.  
**CLICK OK** to apply the resolution.

The Bookmarks panel will allow you to quickly navigate to points of interest.



Click on any text that is BLUE and underlined. These are hyperlinks that can be used to navigate the schematic and machine views.

**VIEW ALL CALLOUTS**

When only one callout is showing on a machine view this button will make all of the callouts visible. This button is located in the top right corner of every machine view page.

HOTKEYS (Keyboard Shortcuts)		
	FUNCTION	KEYS
	Zoom In	"CTRL" / "+"
	Zoom Out	"CTRL" / "-"
	Fit to Page	"CTRL" / "0" (zero)
	Hand Tool	"SPACEBAR" (hold down)
	Find	"CTRL" / "F"



# Schematic

---

## **797F Off-Highway Truck Hydraulic and Powertrain Oil System**

---

LAJ1-UP  
WSP1-UP

**Volume 1 of 3: Steering**  
**Volume 2 of 3: Steep Grade - Braking and Cooling**  
**Volume 3 of 3: Optional Oil Sands Loading Attachment**

---

# COMPONENT LOCATION

## Volume 1 of 3 - STEERING



Description	Part Number	Machine Location	Schematic Location
Accumulator Gp - Precharge Pressure	253-4120	<a href="#">1</a>	<a href="#">J-13</a>
Cylinder Gp - Left Steer	194-6171	<a href="#">2</a>	<a href="#">I-1</a>
Cylinder Gp - Right Steer	288-5537	<a href="#">3</a>	<a href="#">G-1</a>
Filter - Hydraulic	4T-6788	<a href="#">4</a>	<a href="#">D-5</a>
Filter Gp - Oil	290-2569	<a href="#">5</a>	<a href="#">B-8</a>
Filter Gp - Oil	339-9708	<a href="#">6</a>	<a href="#">F-5</a>
Filter Gp - Oil (Case Drain)	290-2569	<a href="#">7</a>	<a href="#">E-3</a>
Motor Gp - Fan Speed Control	226-6003	<a href="#">8</a>	<a href="#">G-10</a>
Pump Gp - Brake Cooling Drive	281-8284	<a href="#">9</a>	<a href="#">C-13</a>
Pump Gp - Metering	192-3897	<a href="#">10</a>	<a href="#">H-7</a>
Pump Gp - Steering And Fan	284-9631	<a href="#">11</a>	<a href="#">C-9</a>
Sensor Gp - Pressure	221-3405	<a href="#">12</a>	<a href="#">J-12</a>
Sensor Gp - Pressure (Park Brake Retract)	221-3410	13*	<a href="#">B-5</a>
Sensor Gp - Speed	186-0131	<a href="#">14</a>	<a href="#">A-3, G-10</a>
Sensor Gp - Temperature	134-2252	<a href="#">15</a>	<a href="#">C-3</a>
Switch As - Steering Oil Level	172-8660	<a href="#">16</a>	<a href="#">C-3</a>
Tank Gp - Hydraulic	280-2090	<a href="#">17</a>	<a href="#">D-4</a>
Valve Gp - Make Up (Fan Anti - cav)	183-7170	<a href="#">18</a>	<a href="#">G-12</a>
Valve Gp - Pressure Reducing	226-0835	<a href="#">19</a>	<a href="#">H-14</a>
Valve Gp - Solenoid	288-4351	<a href="#">20</a>	<a href="#">H-11</a>
Valve Gp - Steering	151-5933	<a href="#">21</a>	<a href="#">I-3</a>

Note \* - Component not shown

Always check Component part Numbers with Parts Manual for your specific machine

# COMPONENT LOCATION

## Volume 2 of 3 - STEEP GRADE - BRAKING AND COOLING



Description	Part Number	Machine Location	Schematic Location
Accumulator Gp - Brake Precharge	377-4739	<a href="#">22</a>	<a href="#">G-9</a>
Accumulator Gp - Brake Precharge	377-4739	<a href="#">23</a>	<a href="#">F-6</a>
Adjuster Gp	205-0560	<a href="#">24</a>	<a href="#">I-11</a>
Adjuster Gp	205-0560	<a href="#">25</a>	<a href="#">I-1</a>
Connector As - Orifice	335-3978	<a href="#">26</a>	<a href="#">E-7</a>
Connector As - Orifice	335-3978	<a href="#">27</a>	<a href="#">E-7</a>
Control Gp - Brake	321-5086	<a href="#">28</a>	<a href="#">F-6</a>
Control Gp - Hyd (Traction Control System)	222-4744	<a href="#">29</a>	<a href="#">I-8</a>
Core As	299-3290	<a href="#">30</a>	<a href="#">J-12</a>
Core As - Front / Rear Brake Cooler	331-0301	<a href="#">31</a>	<a href="#">H-8</a>
Core As - Front / Rear Brake Coolers	331-0301	<a href="#">32</a>	<a href="#">B-4</a>
Cylinder Gp - Basic	339-3275	<a href="#">33</a>	<a href="#">D-12</a>
Cylinder Gp - Hoist	289-8616	<a href="#">34</a>	<a href="#">I-3</a>
Filter Gp - Brake System Oil	290-2567	<a href="#">35</a>	<a href="#">B-9</a>
Filter Gp - Oil (Brake Cooling)	339-9703	<a href="#">36</a>	<a href="#">H-2</a>
Filter Gp - Transmission	334-0572	<a href="#">37</a>	<a href="#">I-12</a>
Filter Gp - Transmission	334-0572	<a href="#">38</a>	<a href="#">G-13</a>
Filter - Hydraulic	4T-6788	<a href="#">39</a>	<a href="#">C-6</a>
Manifold Gp - Power Access Line Relief	336-0981	<a href="#">40</a>	<a href="#">C-13</a>
Motor Gp - Rear Axle Fan	257-6844	<a href="#">41</a>	<a href="#">B-7</a>
Motor Gp - Rear Axle Lube	296-5306	<a href="#">42</a>	<a href="#">D-11</a>
Orifice	164-5545	<a href="#">43</a>	<a href="#">C-13</a>
Plug As	242-7114	<a href="#">44</a>	<a href="#">I-13</a>
Pump Gp - Brake Charge	314-9248	<a href="#">45</a>	<a href="#">A-10</a>
Pump Gp - Brake Cooling Drive	281-8284	<a href="#">46</a>	<a href="#">A-10</a>
Pump Gp - Elec Dr (Relief Valve)	5T-1060	<a href="#">47</a>	<a href="#">C-4</a>
Pump Gp - Electric Drive	293-3902	<a href="#">48</a>	<a href="#">A-13</a>
Pump Gp - Hoist	354-6918	<a href="#">49</a>	<a href="#">B-10</a>
Pump Gp - Rear Axle Lube	324-2716	<a href="#">50</a>	<a href="#">E-11</a>
Screen As	9P-9555	<a href="#">51</a>	<a href="#">F-13</a>
Screen As	172-6104	<a href="#">52</a>	<a href="#">F-13</a>
Screen Gp - Bypass Switch	172-2395	<a href="#">53</a>	<a href="#">C-10</a>
Screens - Brake Cooling	N/A	<a href="#">54</a>	<a href="#">B-5</a>
Sensor Gp - Brake Brake Pressure	221-3410	<a href="#">55</a>	<a href="#">J-8</a>
Sensor Gp - Brake Brake Pressure	221-3410	<a href="#">56</a>	<a href="#">H-9</a>
Sensor Gp - Pressure	221-3405	<a href="#">57</a>	<a href="#">F-8</a>
Sensor Gp - Pressure	221-3405	<a href="#">58</a>	<a href="#">F-6</a>
Sensor Gp - Pressure	221-3415	<a href="#">59</a>	<a href="#">G-13</a>
Sensor Gp - Temp	134-2252	<a href="#">60</a>	<a href="#">F-1</a>
Sensor Gp - Temp	134-2252	<a href="#">61</a>	<a href="#">J-1</a>
Sensor Gp - Temp	134-2252	<a href="#">62</a>	<a href="#">J-11</a>
Sensor Gp - Temp	134-2252	<a href="#">63</a>	<a href="#">F-11</a>
Sensor Gp - Temp	288-8390	<a href="#">64</a>	<a href="#">H-13</a>
Switch As - Pressure	130-7459	<a href="#">65</a>	<a href="#">I-13</a>
Switch As - Pressure (Service Brake)	128-5091	<a href="#">66</a>	<a href="#">E-7</a>
Switch Gp - Filter Bypass	164-7577	<a href="#">67</a>	<a href="#">G-13</a>
Switch Gp - Filter Bypass	164-7577	<a href="#">68</a>	<a href="#">I-12</a>
Tank Gp - Hydraulic	280-2090	<a href="#">69</a>	<a href="#">B-6</a>
Valve - Check	123-4750	<a href="#">70</a>	<a href="#">F-7</a>
Valve - Check	6E-4701	<a href="#">71</a>	<a href="#">G-9</a>
Valve - Check	340-9727	<a href="#">72</a>	<a href="#">C-4</a>
Valve Gp - Control	293-4974	<a href="#">73</a>	<a href="#">H-4</a>
Valve Gp - Diverter	168-7859	<a href="#">74</a>	<a href="#">H-12</a>
Valve Gp - Manual Bypass Control	336-0978	<a href="#">75</a>	<a href="#">C-14</a>
Valve Gp - Mtg	371-4190	<a href="#">76</a>	<a href="#">E-8</a>
Valve Gp - Relief	346-4815	<a href="#">77</a>	<a href="#">C-7</a>
Valve Gp - Relief	172-5381	<a href="#">78</a>	<a href="#">G-13</a>

Always check Component part Numbers with Parts Manual for your specific machine

# COMPONENT LOCATION

## Volume 3 of 3 - OPTIONAL OIL SANDS LOADING ATTACHMENT



Description	Part Number	Machine Location	Schematic Location
Core As	331-0301	<a href="#">79</a>	<a href="#">C-3, C-2</a>
Cylinder Gp - Hoist	289-8616	<a href="#">80</a>	<a href="#">E-3, F-3</a>
Filter - Hydraulic	4T-6788	<a href="#">81</a>	<a href="#">C-4</a>
Filter Gp - Oil (Brake Oil)	339-9703	<a href="#">82</a>	<a href="#">C-2, D-2</a>
Pump Gp - Brake Charge	314-9248	<a href="#">83</a>	<a href="#">A-5</a>
Pump Gp - Brake Cooling	281-8284	<a href="#">84</a>	<a href="#">A-5</a>
Pump Gp - Hoist	354-6918	<a href="#">85</a>	<a href="#">B-6</a>
Screen Gp - Bypass Switch	172-2395	<a href="#">86</a>	<a href="#">B-6</a>
Sensor Gp - Temperature	134-2252	<a href="#">87</a>	<a href="#">A-8, B-1</a> <a href="#">E-1, F-8</a>
Tank Gp - Hydraulic	280-2090	<a href="#">88</a>	<a href="#">B-4</a>
Valve Gp - Control	293-4974	<a href="#">89</a>	<a href="#">F-6</a>
Valve Gp - Diverter	376-4642	<a href="#">90</a>	<a href="#">D-3</a>
Valve Gp - Diverter	342-2110	<a href="#">91</a>	<a href="#">D-2</a>
Valve Gp - Manifold	376-7246	<a href="#">92</a>	<a href="#">A-4</a>
Valve Gp - Relief	364-5661	<a href="#">93</a>	<a href="#">A-4</a>

Always check Component part Numbers with Parts Manual for your specific machine.

# TAP LOCATION

## Volume 1 of 3 - STEERING



Tap Number	Description	Schematic Location
<a href="#">Y</a>	Brake Cooling Drive Pump Pressure	<a href="#">E-14</a>
<a href="#">W</a>	Radiator Fan Pressure	<a href="#">G-12</a>
<a href="#">RR</a>	Steering Accumulator Pressure	<a href="#">I-12</a>
<a href="#">X</a>	Steering Flow Amp	<a href="#">I-5</a>
SS	Steering Pump Pressure	<a href="#">I-12</a>
<a href="#">YY</a>	Steering Return	<a href="#">H-11</a>
<a href="#">UU</a>	Steering Supply	<a href="#">I-11</a>

SchematicCat.com

# TAP LOCATION

## Volume 2 of 3 - STEEP GRADE - BRAKING AND COOLING



Tap Number	Description	Schematic Location
<a href="#">A</a>	Rear Brake Slack Adjuster	<a href="#">H-12</a>
<a href="#">B</a>	Front Brake Slack Adjuster	<a href="#">H-1</a>
<a href="#">C</a>	Brake Accumulator	<a href="#">F-9</a>
<a href="#">D</a>	Brake Accumulator	<a href="#">F-6</a>
<a href="#">E</a>	Brake Pedal	<a href="#">E-6</a>
<a href="#">F</a>	Right Rear Park Brake	<a href="#">F-10</a>
<a href="#">G</a>	Left Rear Park Brake	<a href="#">J-10</a>
<a href="#">H</a>	Tcs Pilot	<a href="#">H-7</a>
<a href="#">I*</a>	Brake To Tank	<a href="#">D-5</a>
<a href="#">J</a>	Raxl Drive Pump Pressure	<a href="#">D-12</a>
<a href="#">K</a>	Brake Charge Pressure	<a href="#">B-9</a>
<a href="#">L</a>	Right Rear Service Brake	<a href="#">G-11</a>
<a href="#">M</a>	Left Rear Service Brake	<a href="#">I-11</a>
<a href="#">N</a>	Left Front Service Brake	<a href="#">I-1</a>
<a href="#">O</a>	Right Front Service Brake	<a href="#">G-1</a>
<a href="#">Q</a>	Left Rear Brake Cooling In	<a href="#">J-10</a>
<a href="#">R</a>	Right Rear Brake Cooling In	<a href="#">F-10</a>
<a href="#">S</a>	Left Front Brake Cooling Out	<a href="#">J-2</a>
<a href="#">T</a>	Left Front Brake Cooling Out	<a href="#">J-1</a>
<a href="#">U</a>	Right Front Brake Cooling In	<a href="#">F-2</a>
<a href="#">V</a>	Right Front Brake Cooling Out	<a href="#">F-1</a>
<a href="#">Z</a>	Front Brake Cooling Supply	<a href="#">B-5</a>
<a href="#">AA</a>	Rear Brake Cooling Supply	<a href="#">B-5</a>
<a href="#">BB</a>	Left Brake Pressure	<a href="#">J-8</a>
<a href="#">CC</a>	Right Brake Pressure	<a href="#">I-8</a>
<a href="#">DD</a>	Pilot Oil Bypass (To Front Brake Cooling)	<a href="#">J-7</a>
<a href="#">EE</a>	Pilot Oil Bypass (To Rear Brake Cooling)	<a href="#">I-7</a>
<a href="#">FF</a>	Hoist Cylinder Rod End Pressure	<a href="#">J-4</a>
<a href="#">GG</a>	Pilot Pressure -Rod End To Tank (Raise)	<a href="#">J-4</a>
<a href="#">HH</a>	Pilot Pressure -Pump To Rod End (Lower)	<a href="#">I-5</a>
<a href="#">JJ</a>	Pilot Pressure -Pump To Head End (Raise)	<a href="#">I-5</a>
<a href="#">KK</a>	Pilot Pressure -Head End To Tank (Lower)	<a href="#">H-5</a>
<a href="#">LL</a>	Hoist Cylinder Head End Pressure	<a href="#">H-4</a>
<a href="#">PP</a>	Hoist Pump Discharge/brake Cooling Supply	<a href="#">I-5</a>

Note \* - component not shown

# TAP LOCATION

## Volume 3 of 3 - OPTIONAL OIL SANDS LOADING ATTACHMENT



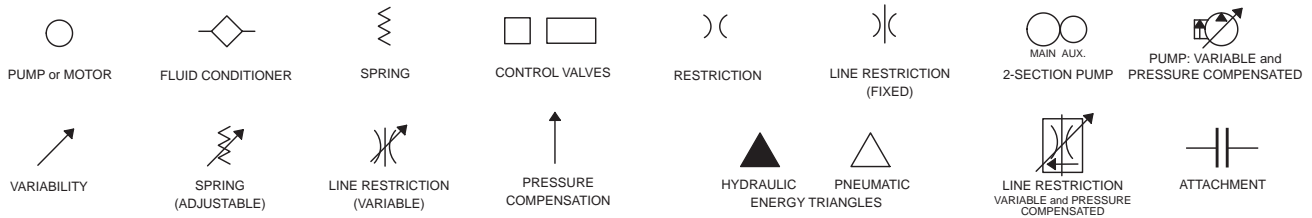
Tap Number	Description	Schematic Location
<a href="#">Q</a>	Right Rear Brake Cooling In	<a href="#">F-7</a>
<a href="#">R</a>	Left Rear Brake Cooling In	<a href="#">A-7</a>
<a href="#">S</a>	Left Front Brake Cooling Out	<a href="#">E-2</a>
<a href="#">I</a>	Left Front Brake Cooling Out	<a href="#">E-1</a>
<a href="#">U</a>	Right Front Brake Cooling In	<a href="#">B-2</a>
<a href="#">V</a>	Right Front Brake Cooling Out	<a href="#">B-1</a>
<a href="#">Z</a>	Front Brake Cooling Supply	<a href="#">A-3</a>
<a href="#">AA</a>	Rear Brake Cooling Supply	<a href="#">A-3</a>



# FLUID POWER SYMBOLS



## BASIC COMPONENT SYMBOLS



## VALVE ENVELOPES

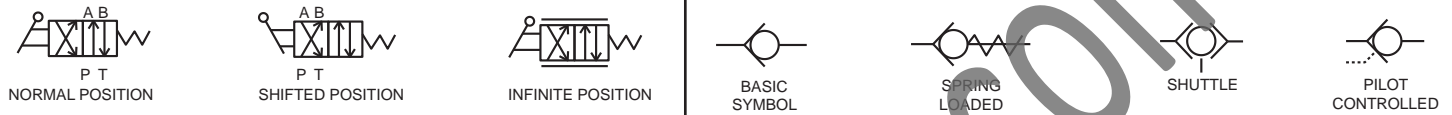
## VALVES

## VALVE PORTS



## CONTROL VALVES

## CHECK VALVES



## FLUID STORAGE RESERVOIRS



## MEASUREMENT

## ROTATING SHAFTS



## COMBINATION CONTROLS



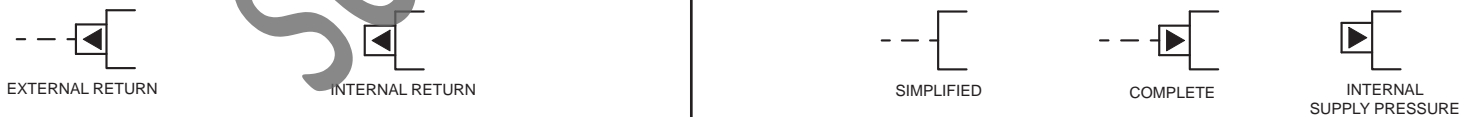
## MANUAL CONTROL SYMBOLS



## RELEASED PRESSURE

## PILOT CONTROL SYMBOLS

## REMOTE SUPPLY PRESSURE



## ACCUMULATORS

## CROSSING AND JOINING LINES

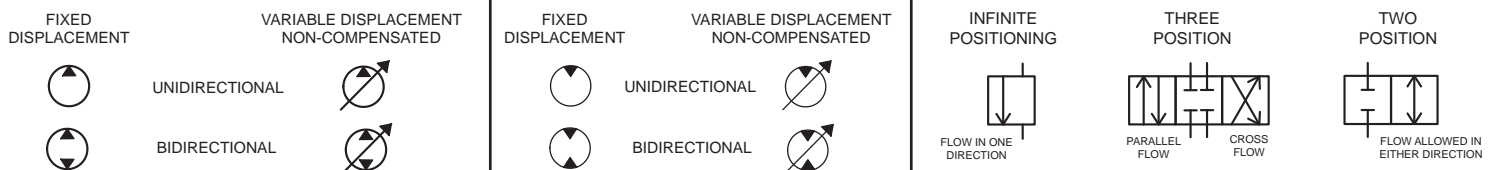
## HYDRAULIC AND PNEUMATIC CYLINDERS



## HYDRAULIC PUMPS

## HYDRAULIC MOTORS

## INTERNAL PASSAGEWAYS



# ELECTRICAL SYMBOLS



## Hydraulic Symbols (Electrical)



Transducer  
(Fluid)



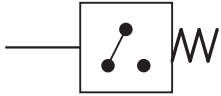
Transducer  
(Gas / Air)



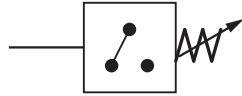
Generator



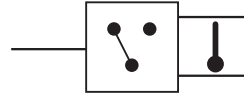
Electric Motor



Pressure Switch



Pressure Switch  
(Adjustable)

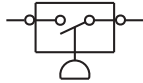


Temperature Switch

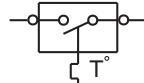


Electrical Wire

## Electrical Symbols (Electrical)



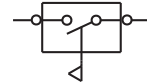
Pressure  
Symbol



Temperature  
Symbol



Level  
Symbol

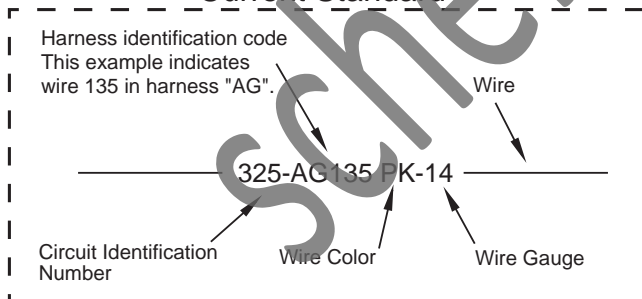


Flow  
Symbol

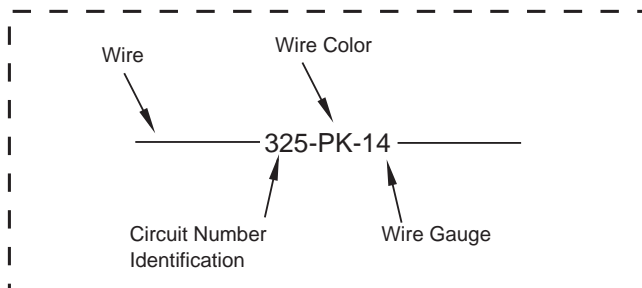
## Wire Number Identification Codes

### Electrical Schematic Example

#### Current Standard

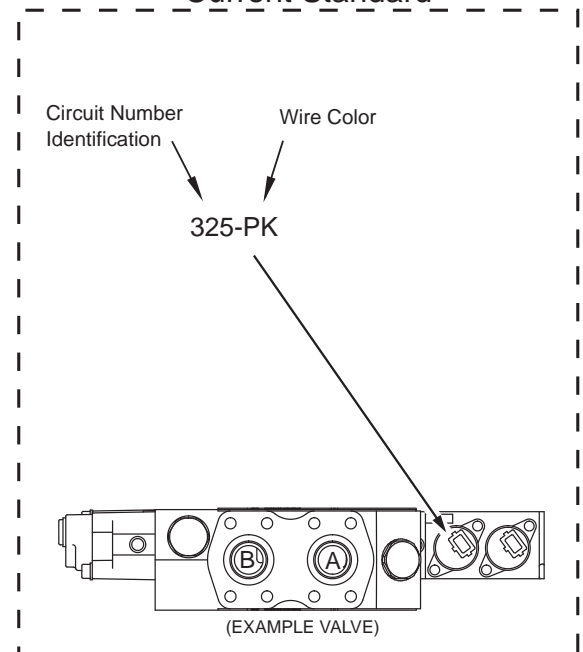


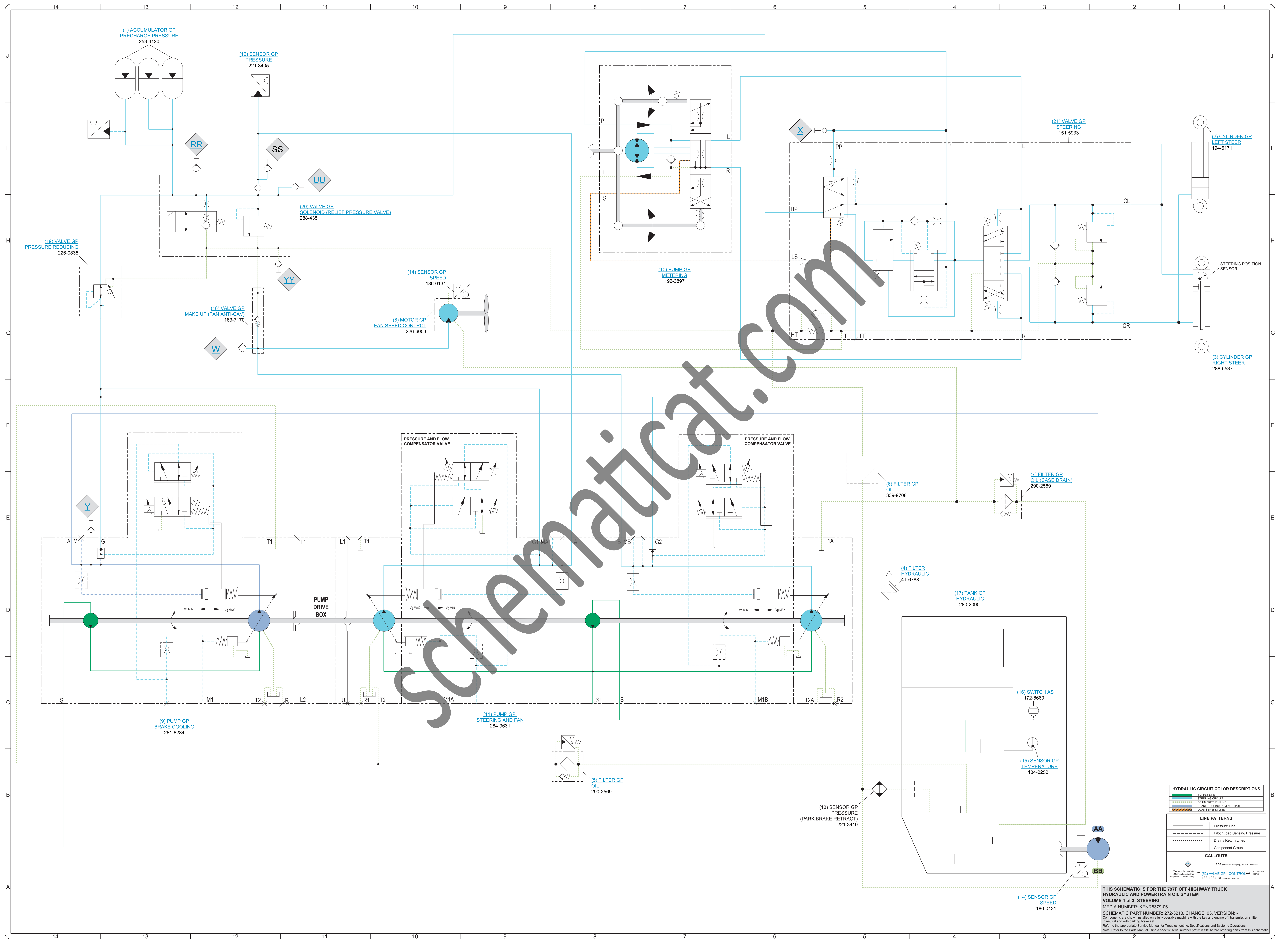
#### Previous Standard



### Hydraulic Schematic Example

#### Current Standard





HYDRAULIC CIRCUIT COLOR DESCRIPTIONS	
<span style="color: green;">—</span>	Supply Line
<span style="color: blue;">—</span>	Steering Circuit
<span style="color: red;">—</span>	Drain / Return Line
<span style="color: yellow;">—</span>	Brake Cooling Line / Outlet
<span style="color: orange;">—</span>	Load Sensing Line

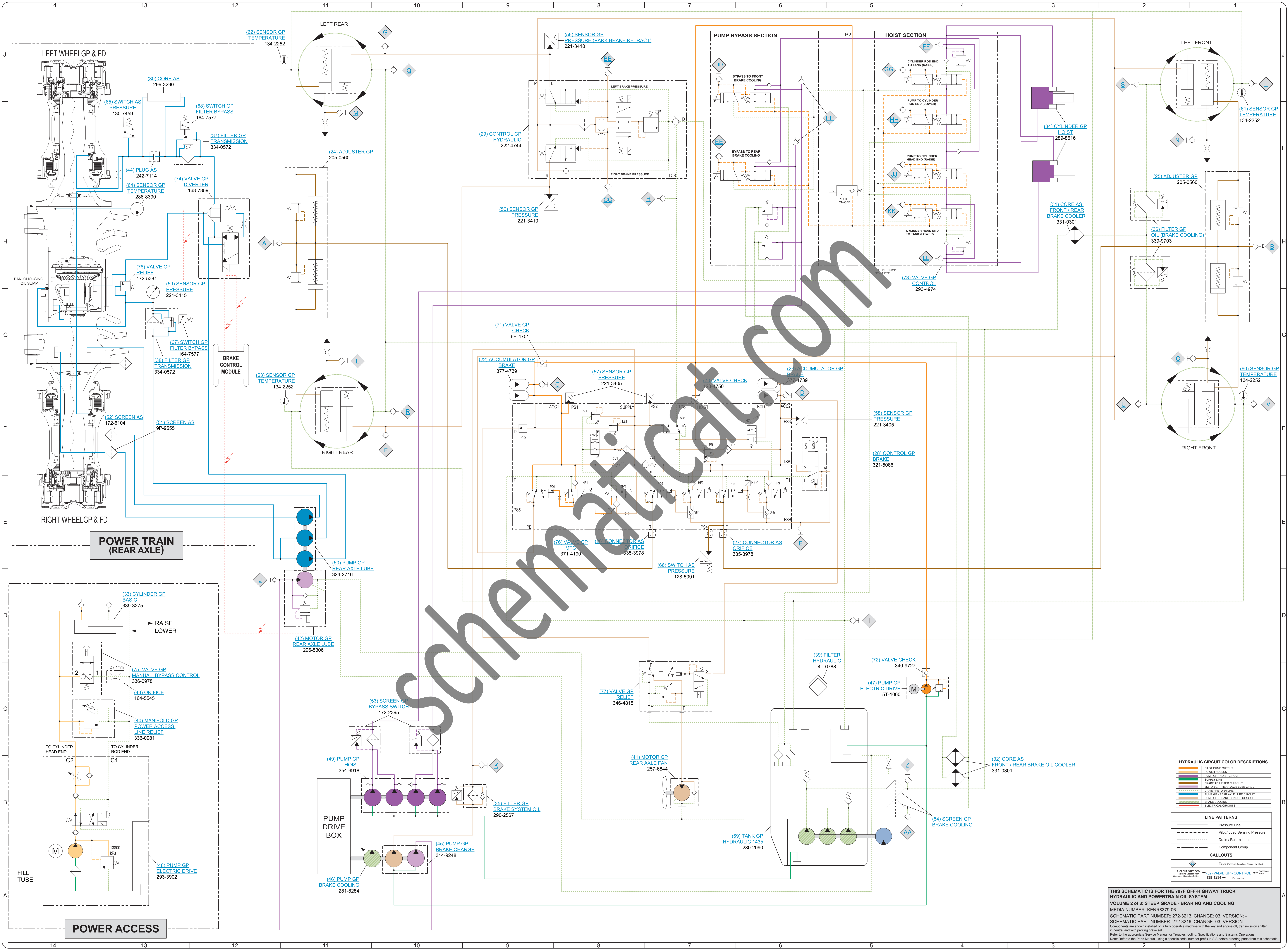
  

LINE PATTERNS	
<span style="color: green;">—</span>	Pressure Line
<span style="color: blue;">—</span>	Pilot / Load Sensing Pressure
<span style="color: red;">—</span>	Drain / Return Lines
<span style="color: yellow;">—</span>	Component Group

CALLOUTS	
<span style="color: blue;">◆</span>	Tap/ Pressure Sensing Sensor (to Meter)
<span style="color: blue;">◆</span>	Callout Number
<span style="color: blue;">◆</span>	Component Number
<span style="color: blue;">◆</span>	Part Number

**THIS SCHEMATIC IS FOR THE 797F OFF-HIGHWAY TRUCK HYDRAULIC AND POWERTRAIN OIL SYSTEM**  
 VOLUME 1 of 3: STEERING  
 MEDIA NUMBER: KENR2379-06  
 SCHEMATIC PART NUMBER: 272-3213, CHANGE: 03, VERSION: -  
 Components are shown installed on a fully operable machine with the key and engine off, transmission shifter in neutral and with parking brake set.  
 Refer to the appropriate Service Manual for Troubleshooting, Specifications and Systems Operations.  
 Note: Refer to the Parts Manual using a specific serial number prefix in 303 before ordering parts from this schematic.

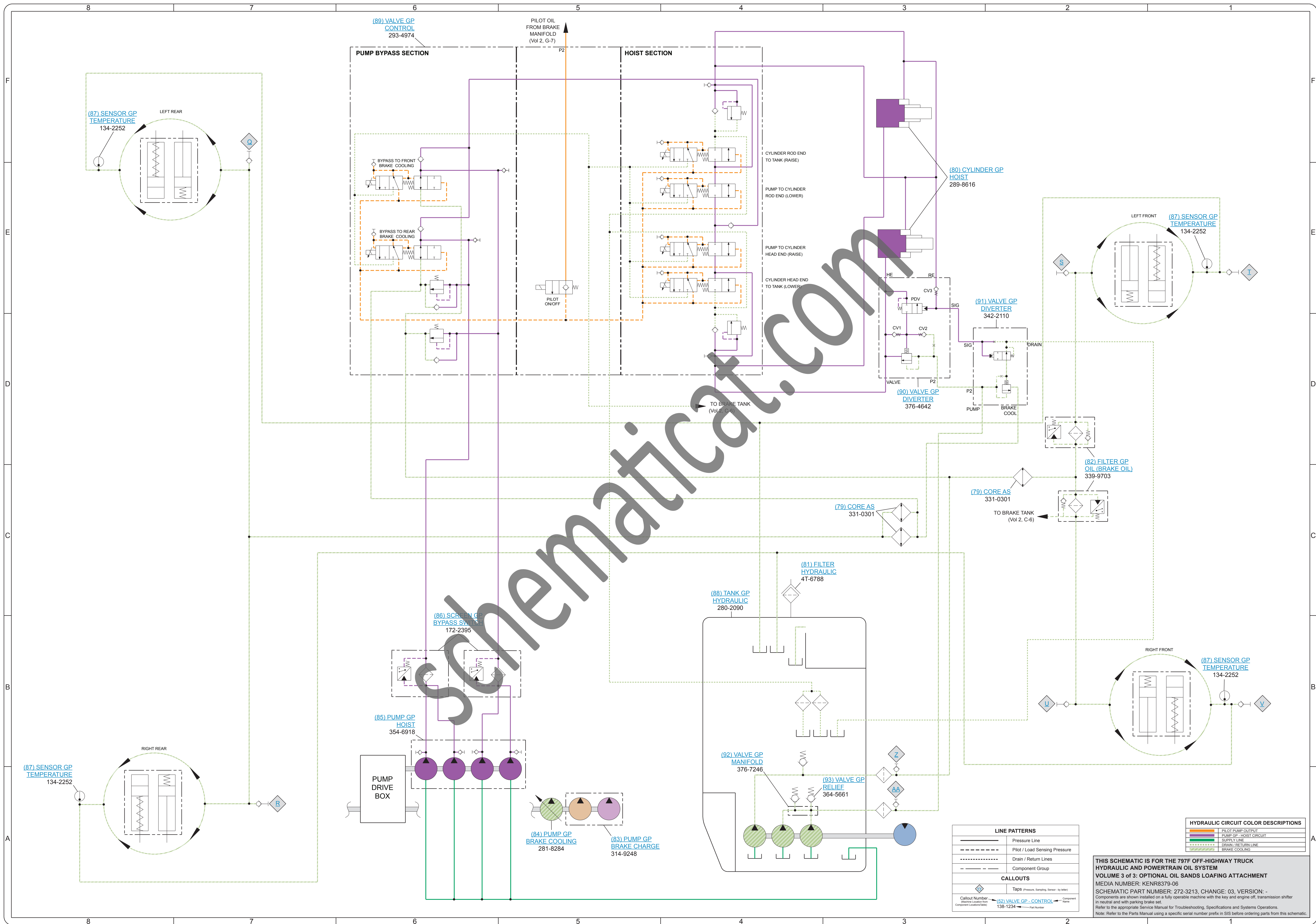


HYDRAULIC CIRCUIT COLOR DESCRIPTIONS	
[Red Line]	PILOT PUMP CIRCUIT
[Orange Line]	POWER ACCESS
[Green Line]	PUMP GP - HYDRAULIC CIRCUIT
[Blue Line]	BRAKE RELEASE CIRCUIT
[Purple Line]	MOTOR GP - REAR AXLE LUBE CIRCUIT
[Light Blue Line]	ORIFICE / RELIEF LINE
[Light Green Line]	PUMP GP - REAR AXLE LUBE CIRCUIT
[Light Purple Line]	PUMP GP - BRAKE CHARGE CIRCUIT
[Light Orange Line]	BRAKE COOLING
[Light Yellow Line]	ELECTRICAL CIRCUITS

LINE PATTERNS	
[Solid Line]	Pressure Line
[Dashed Line]	Pilot / Load Sensing Pressure
[Dotted Line]	Drain / Return Lines
[Dash-dot Line]	Component Group

CALLOUTS	
[Diamond]	Taps (Pressure, Working, Return, to Relief)
[Circle]	Valve GP - CONTROL
[Square]	Accumulator GP - BRAKE
[Triangle]	Filter GP - TRANSMISSION
[Hexagon]	Filter GP - BRAKE COOLING
[Octagon]	Filter GP - TRANSMISSION
[Star]	Filter GP - BRAKE COOLING
[Circle with X]	Filter GP - TRANSMISSION
[Circle with Y]	Filter GP - BRAKE COOLING

**THIS SCHEMATIC IS FOR THE 797 OFF-HIGHWAY TRUCK**  
**HYDRAULIC AND POWERTRAIN OIL SYSTEM**  
 VOLUME 2 of 3: STEEP GRADE - BRAKING AND COOLING  
 MEDIA NUMBER: KENR6379-06  
 SCHEMATIC PART NUMBER: 272-3213, CHANGE: 03, VERSION: -  
 SCHEMATIC PART NUMBER: 272-3216, CHANGE: 03, VERSION: -  
 Components are shown installed on a fully operable machine with the key and engine off. Illustrations and Systems Operations in red and with parking brake set.  
 Refer to the appropriate Service Manual for Troubleshooting, Specifications and Systems Operations.  
 Note: Refer to the Parts Manual using a specific serial number prefix in SIB before ordering parts from this schematic.



LINE PATTERNS	
	Pressure Line
	Pilot / Load Sensing Pressure
	Drain / Return Lines
	Component Group

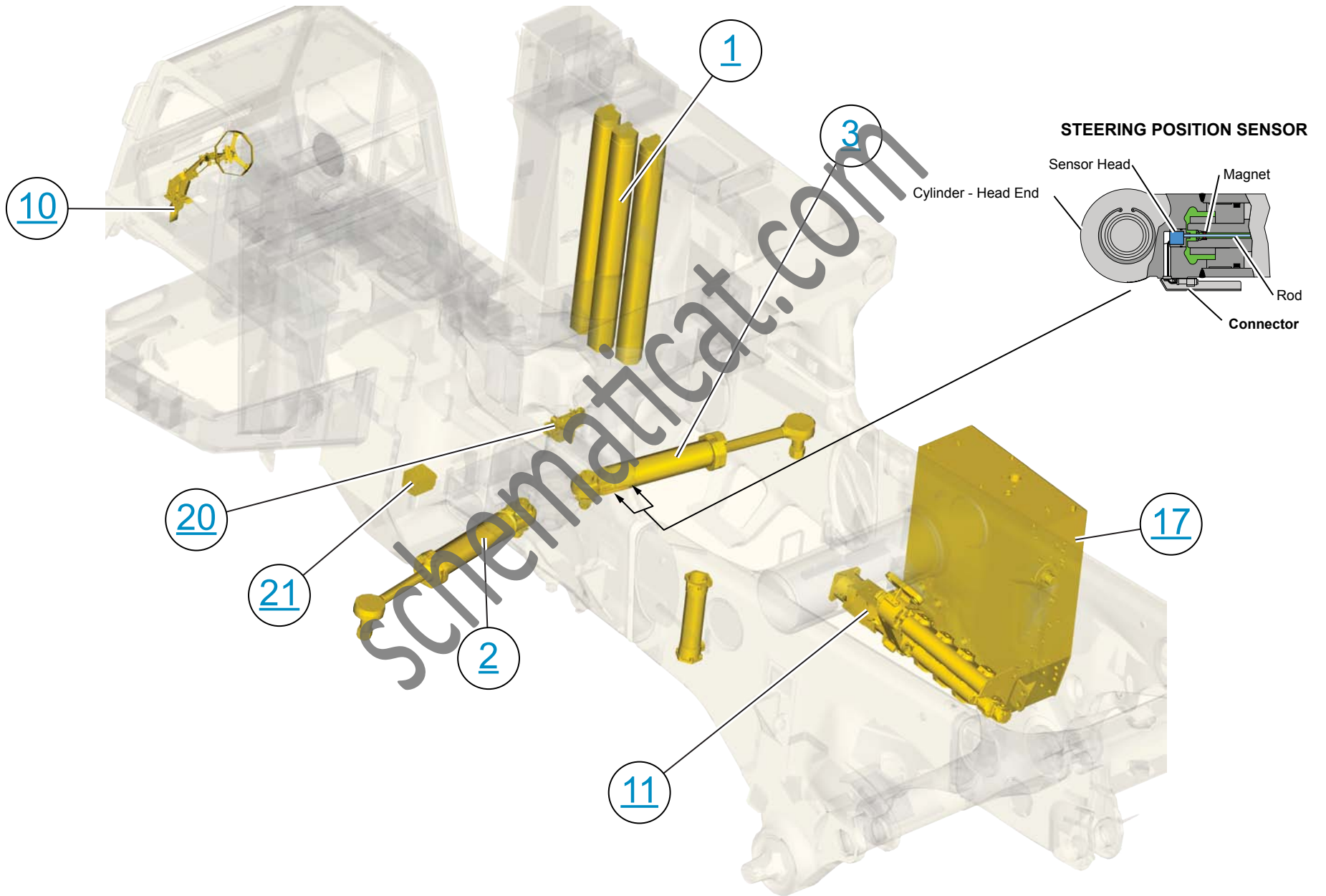
  

CALLOUTS	
	Taps (Pressure, Sampling, Sensor, by letter)
	Callout Number
	Master Location Item
	Component Location Item
	138-1524 - part number

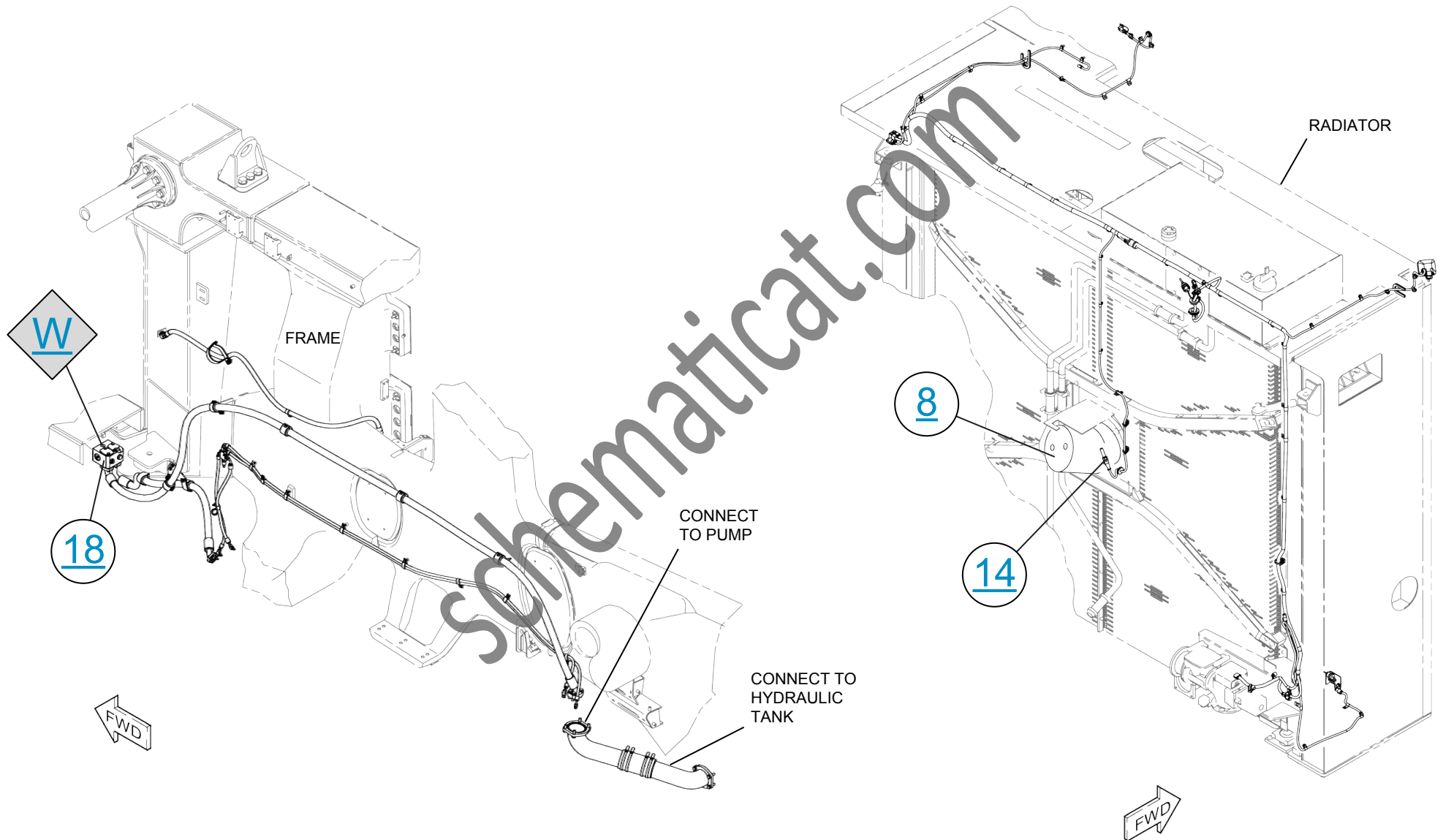
HYDRAULIC CIRCUIT COLOR DESCRIPTIONS	
	PILLOT PUMP OUTPUT
	PUMP GP. HOIST CIRCUIT
	SUPPLY LINE
	DRAIN/RETURN LINE
	BRAKE COOLING

**THIS SCHEMATIC IS FOR THE 797F OFF-HIGHWAY TRUCK HYDRAULIC AND POWERTRAIN OIL SYSTEM VOLUME 3 of 3: OPTIONAL OIL SANDS LOADING ATTACHMENT**  
 MEDIA NUMBER: KENR8379-06  
 SCHEMATIC PART NUMBER: 272-3213, CHANGE: 03, VERSION: -  
 Components are shown installed on a fully operable machine with the key and engine off, transmission shifter in neutral and with parking brake set.  
 Refer to the appropriate Service Manual for Troubleshooting, Specifications and Systems Operations.  
 Note: Refer to the Parts Manual using a specific serial number prefix in SIS before ordering parts from this schematic.

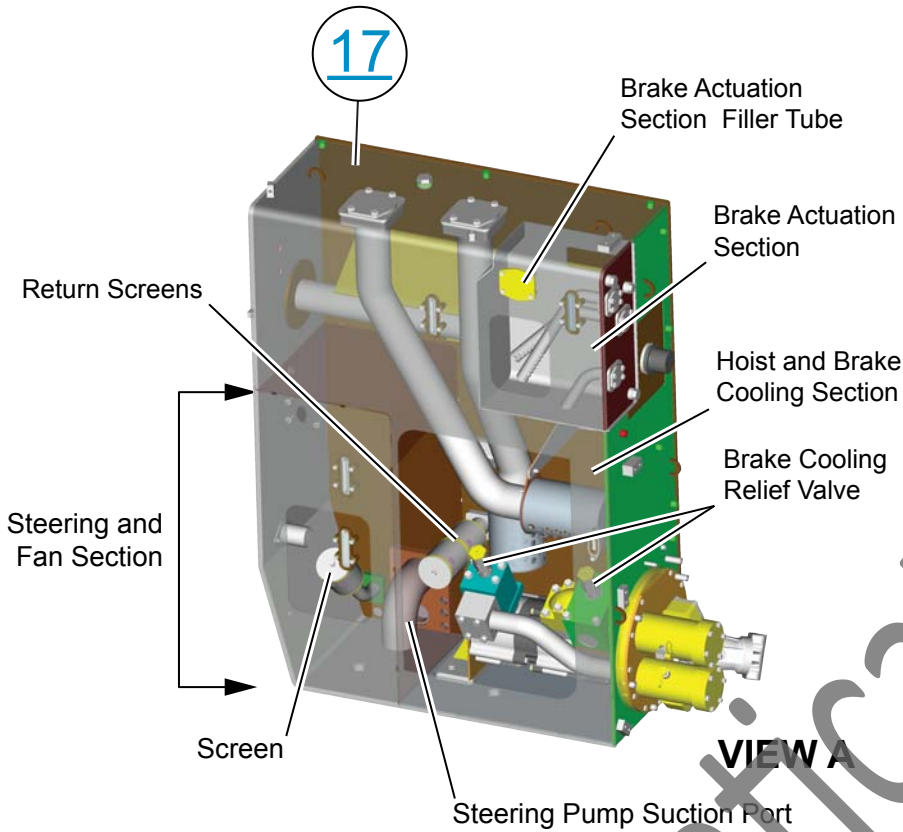
# CHASSIS VIEW



# FAN CONTROL CIRCUIT

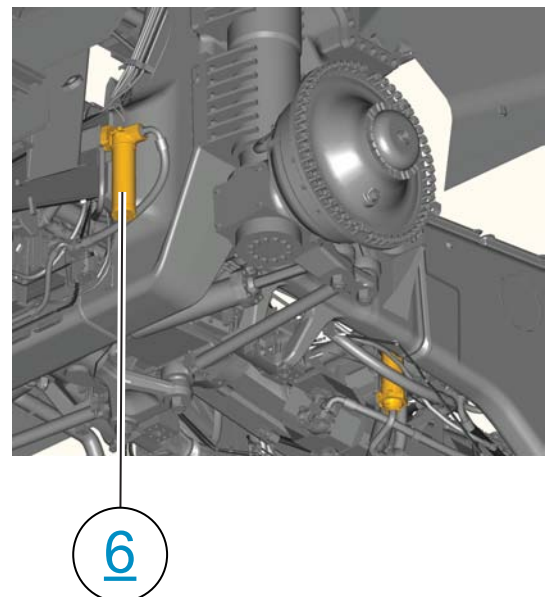
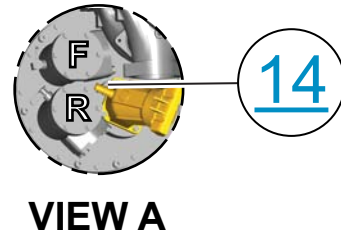
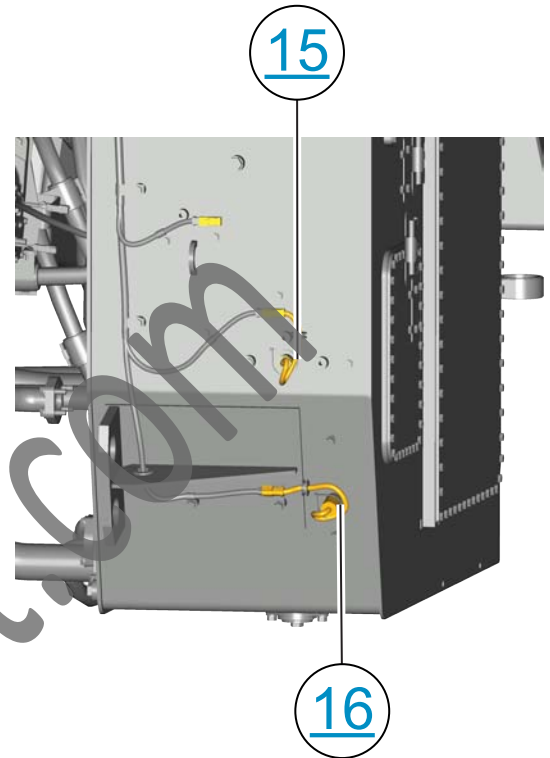
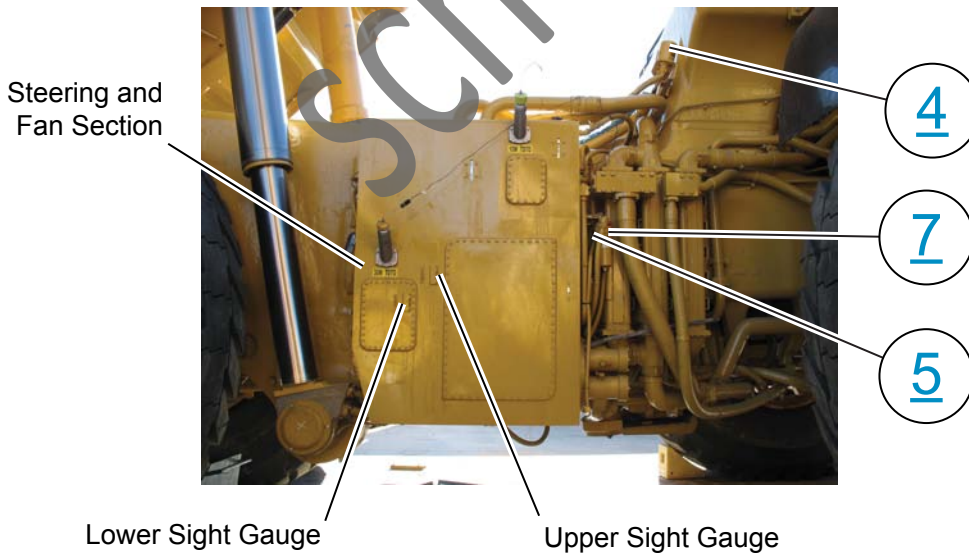


# HYDRAULIC TANK



**FRONT**

**Hydraulic Tank, Right Side**

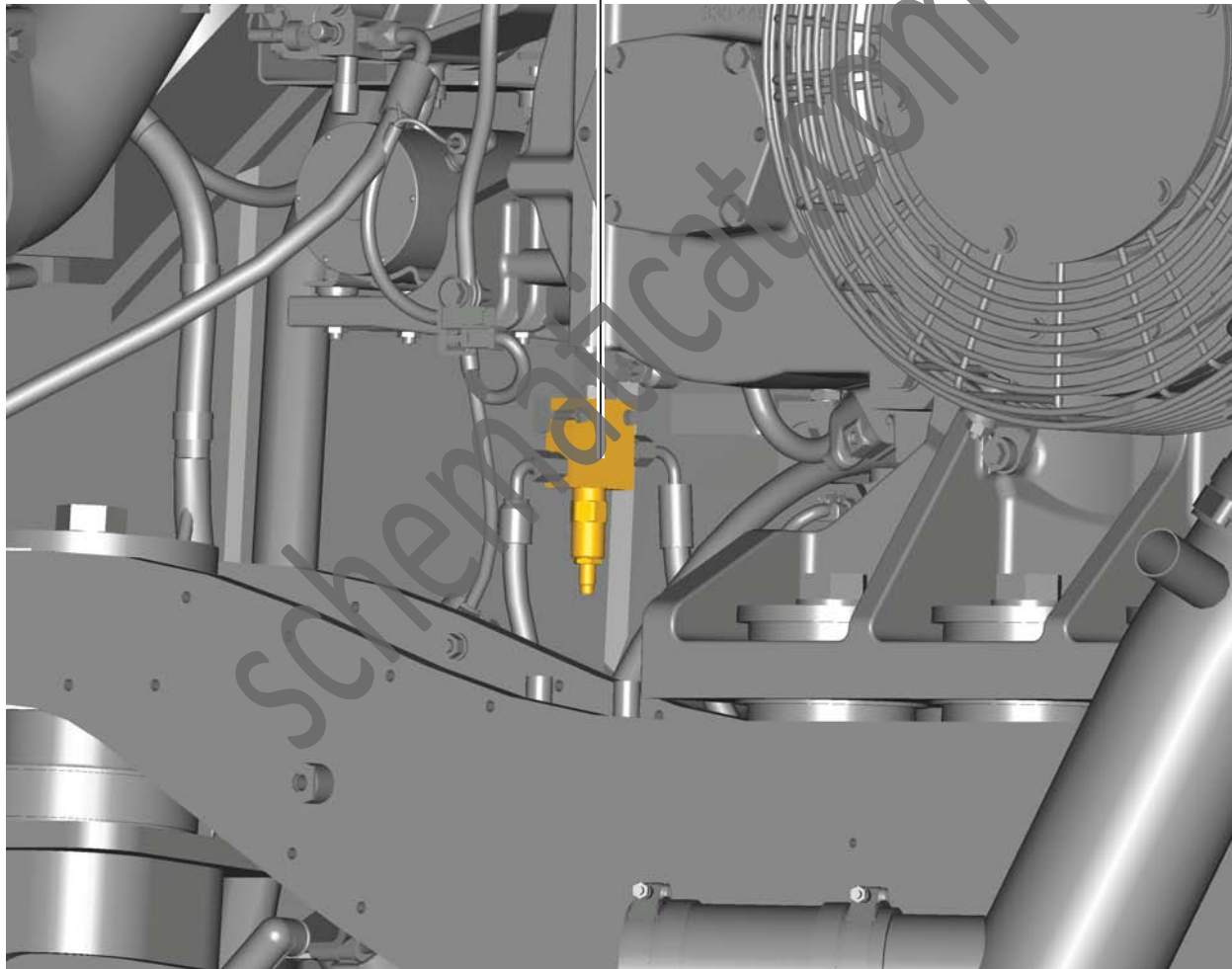




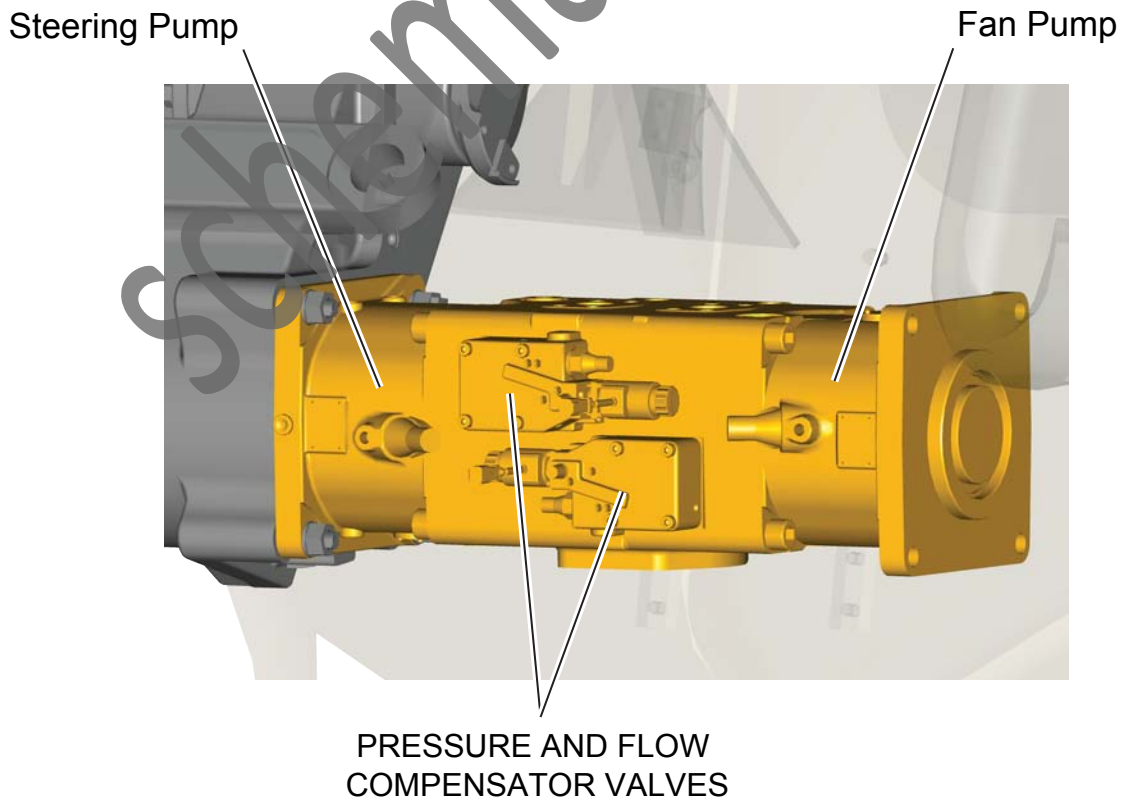
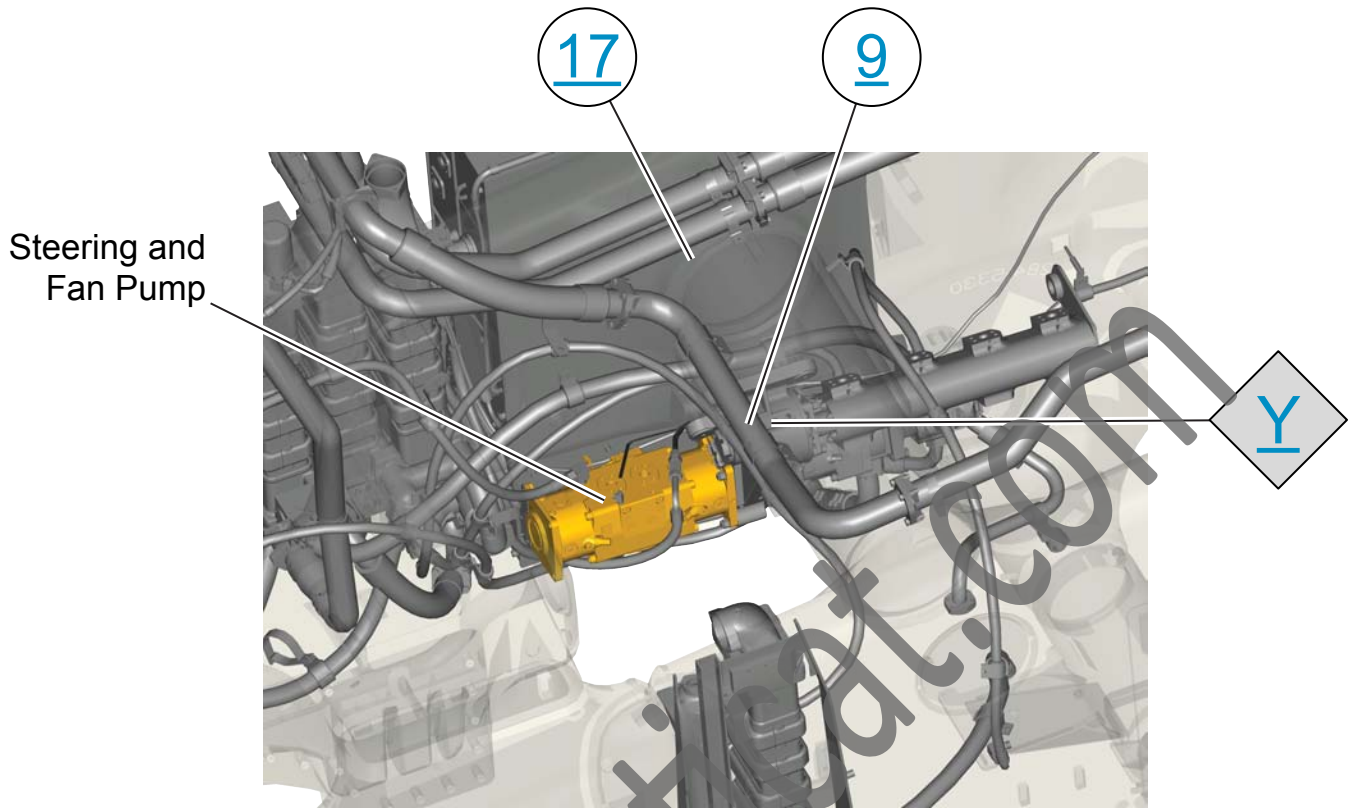
# PRESSURE REDUCING VALVE



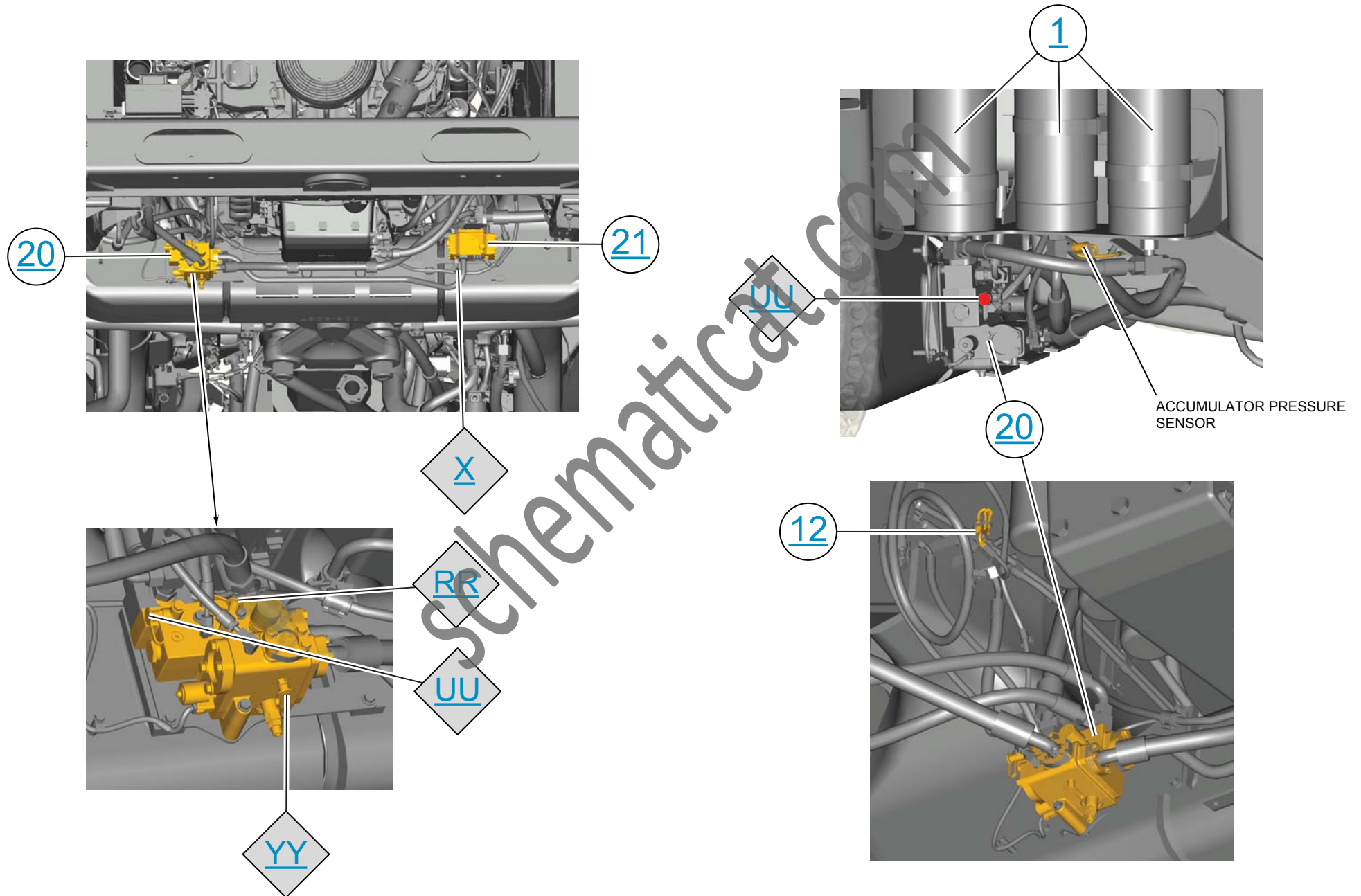
19



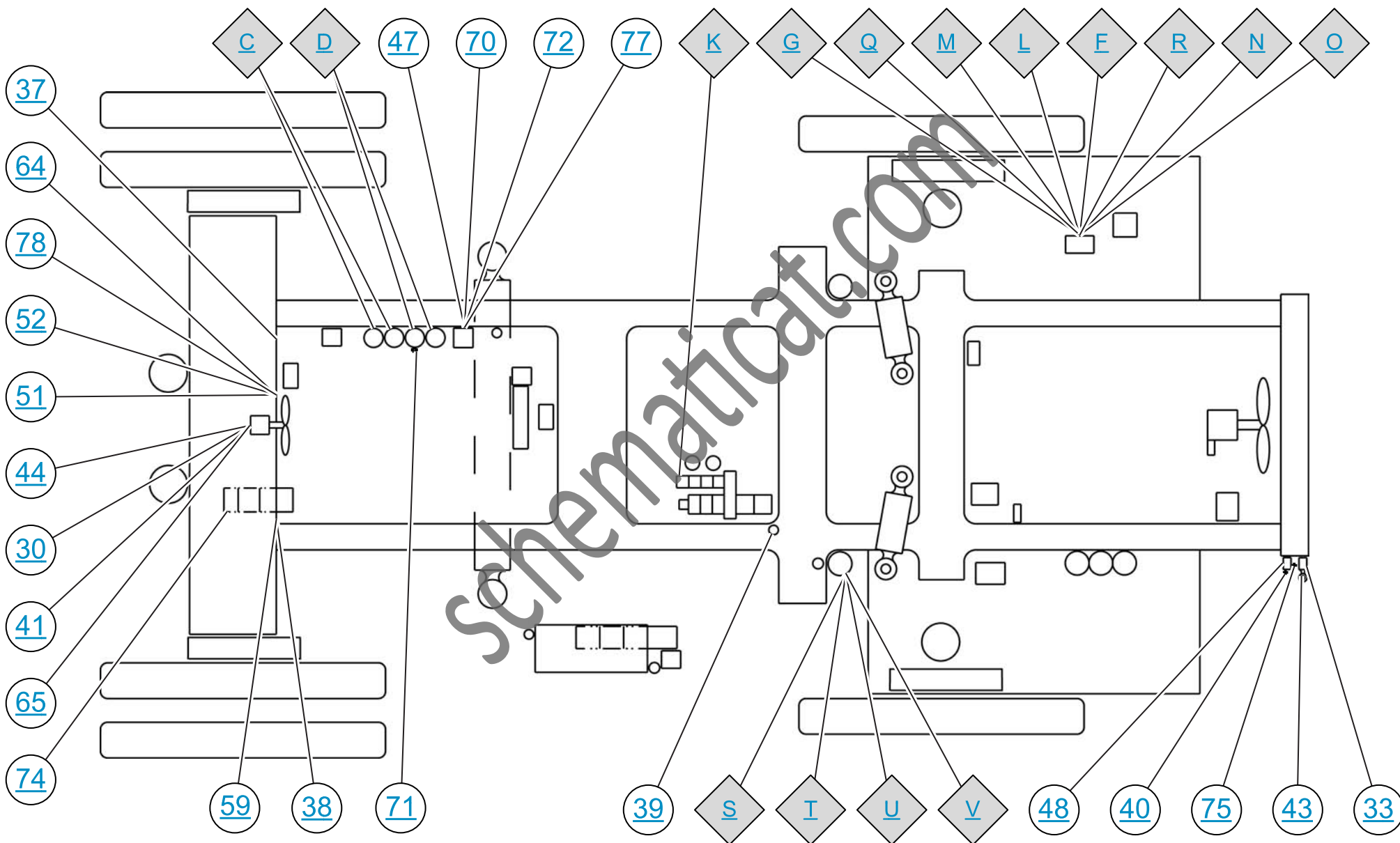
# STEERING AND FAN PUMP



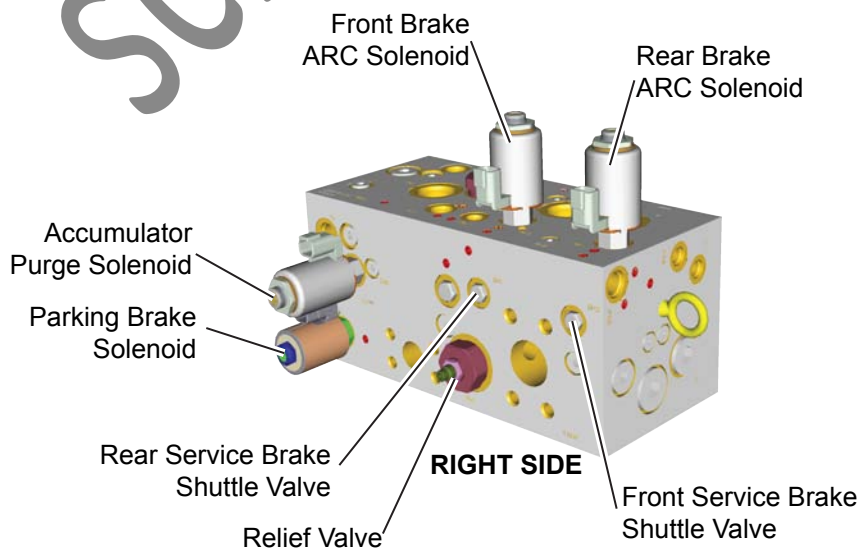
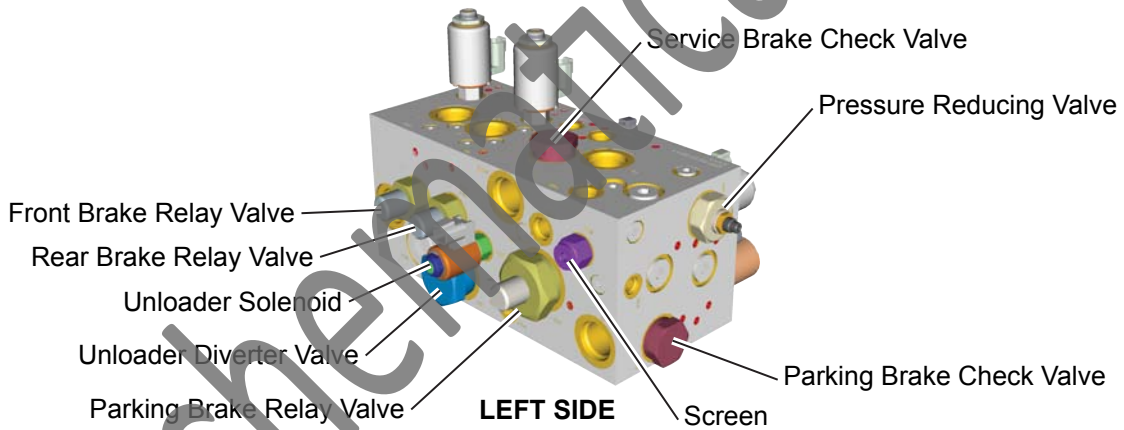
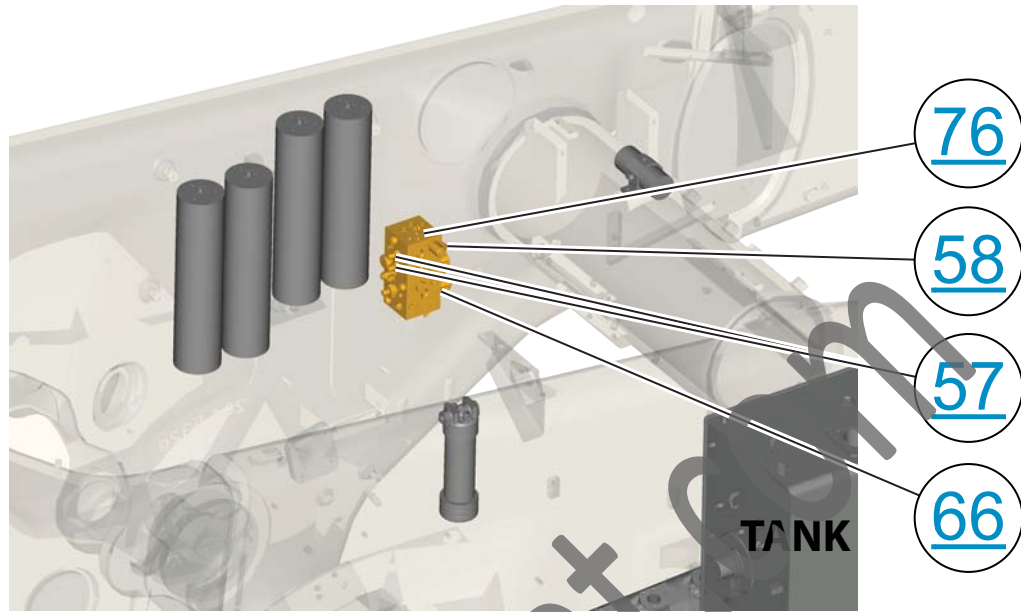
# STEERING CONTROL VALVE AND RELIEF VALVE MANIFOLD



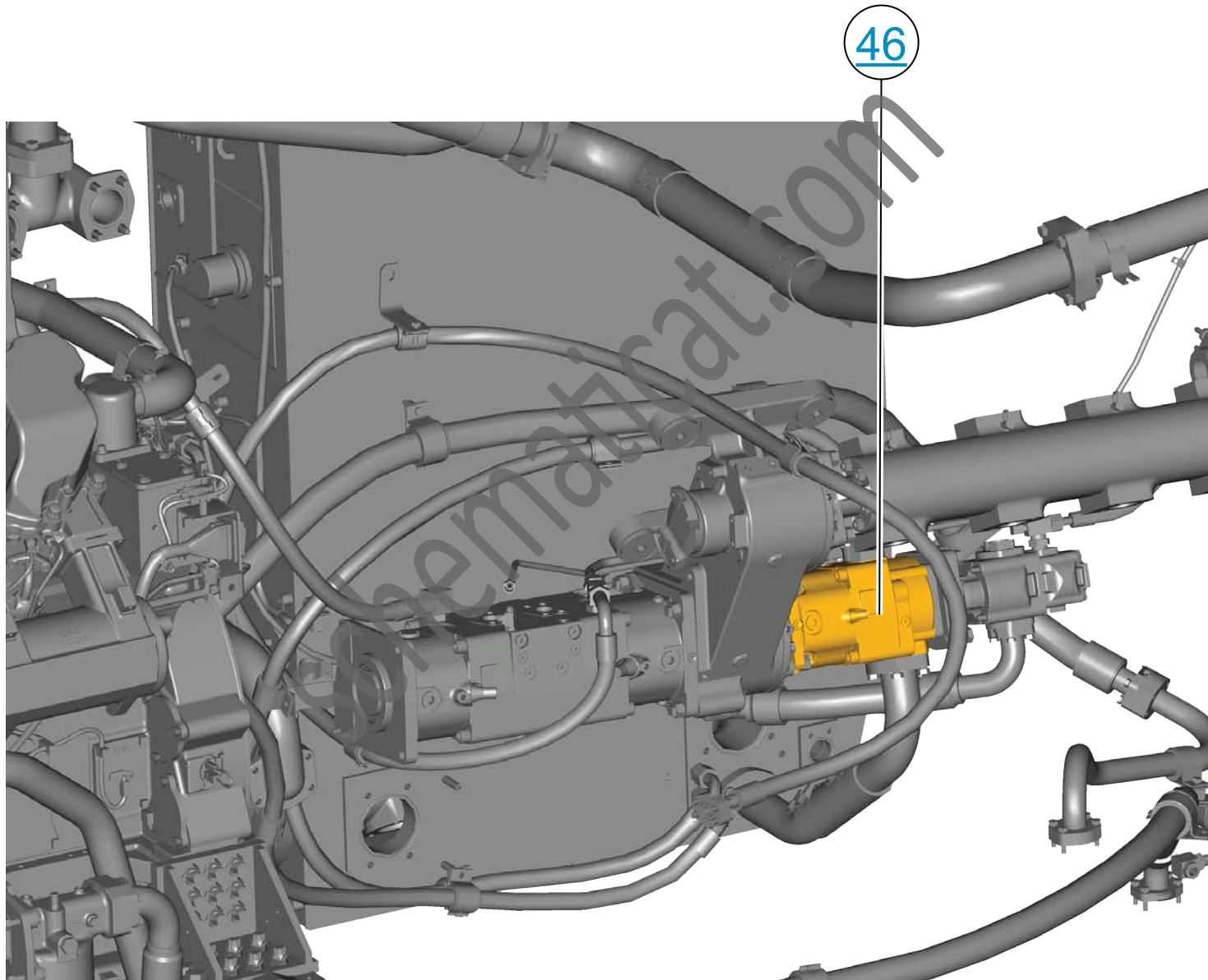
# MACHINE COMPONENT AND TAP LOCATIONS



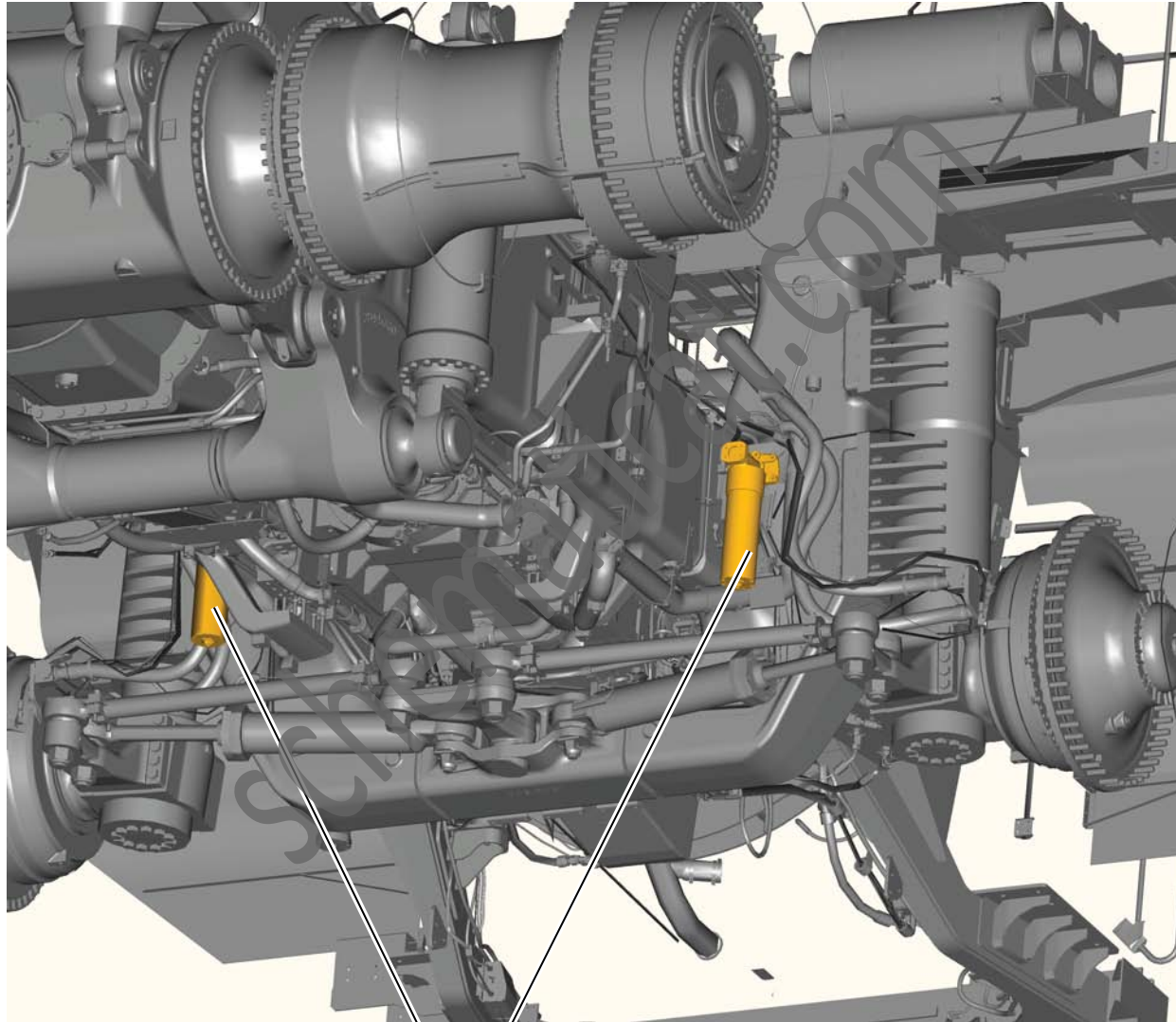
# BRAKE CHASSIS VALVE



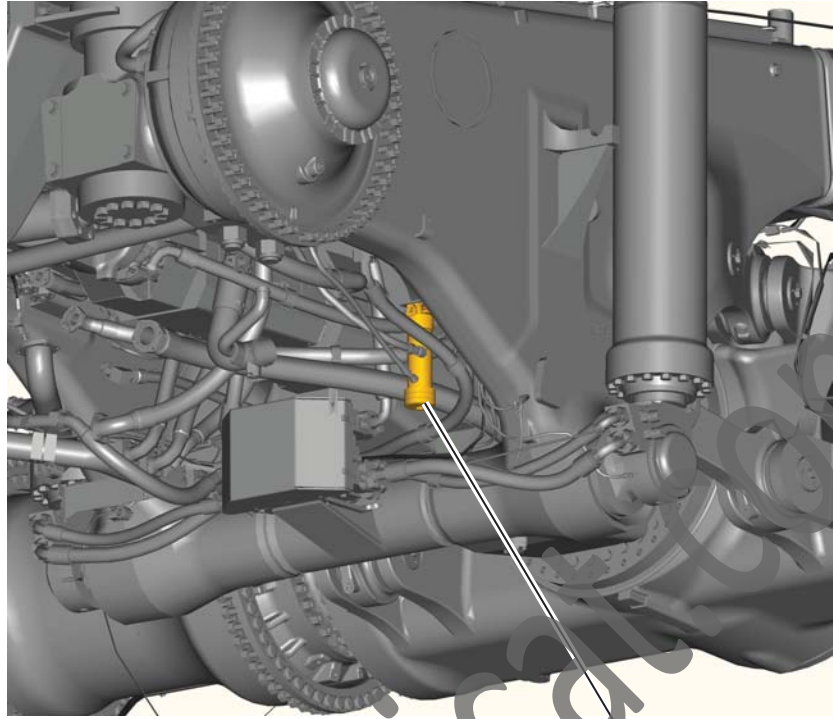
# BRAKE COOLING DRIVE



# BRAKE COOLING SCREENS

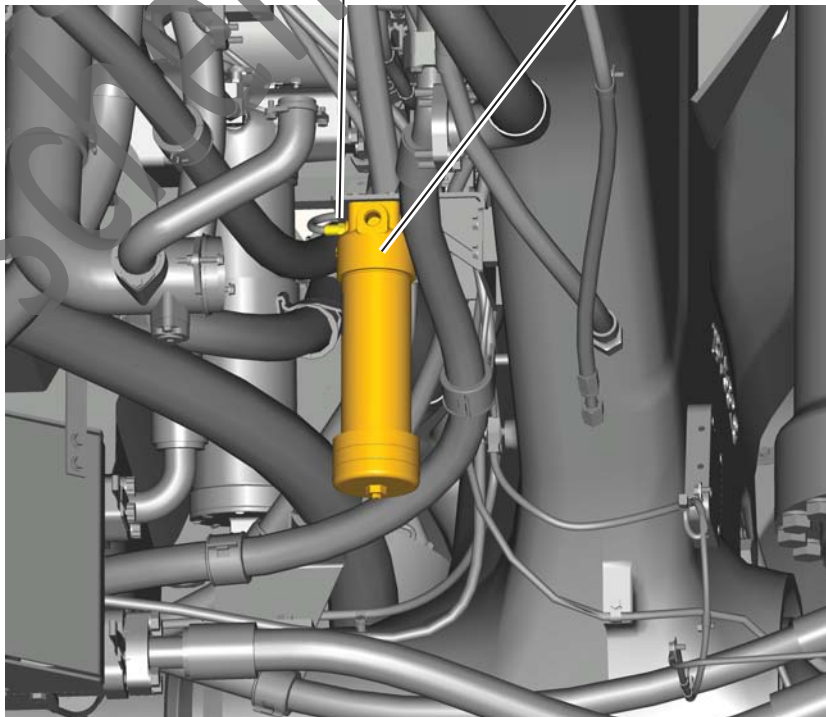


# BRAKE SYSTEM FILTER



68

35





# BRAKE TEMPERATURE SENSORS

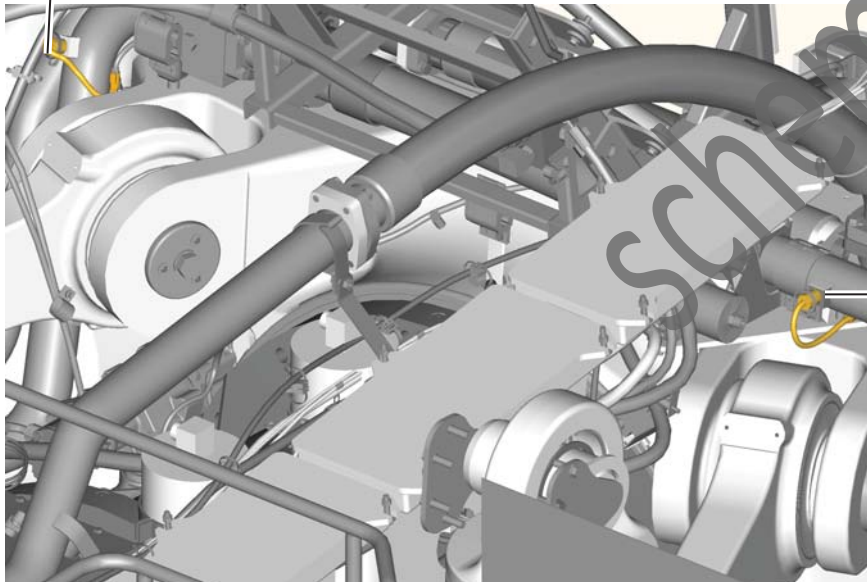


63



LEFT FRONT

61



REAR

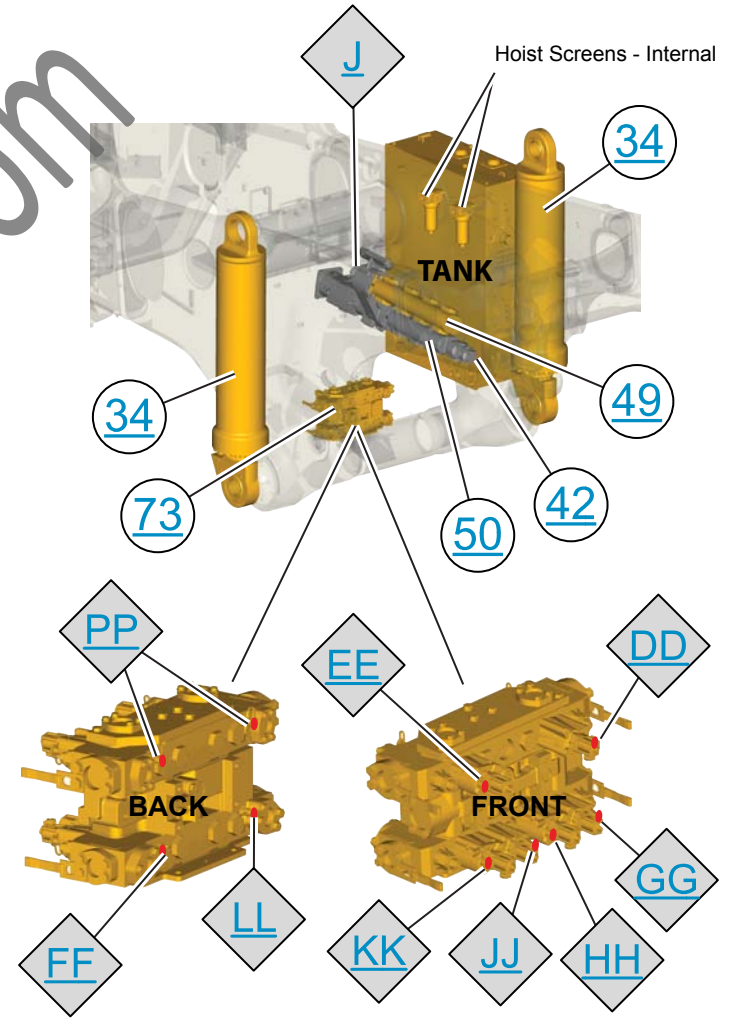
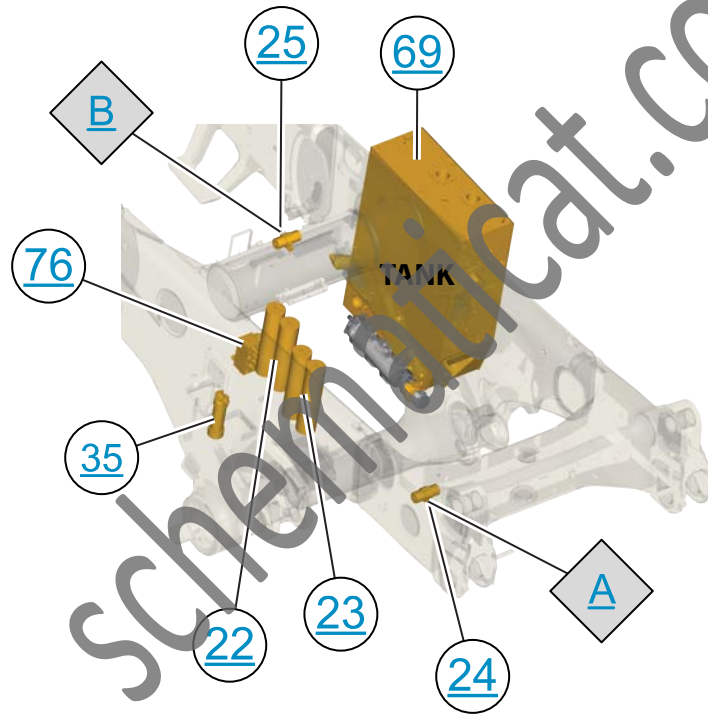
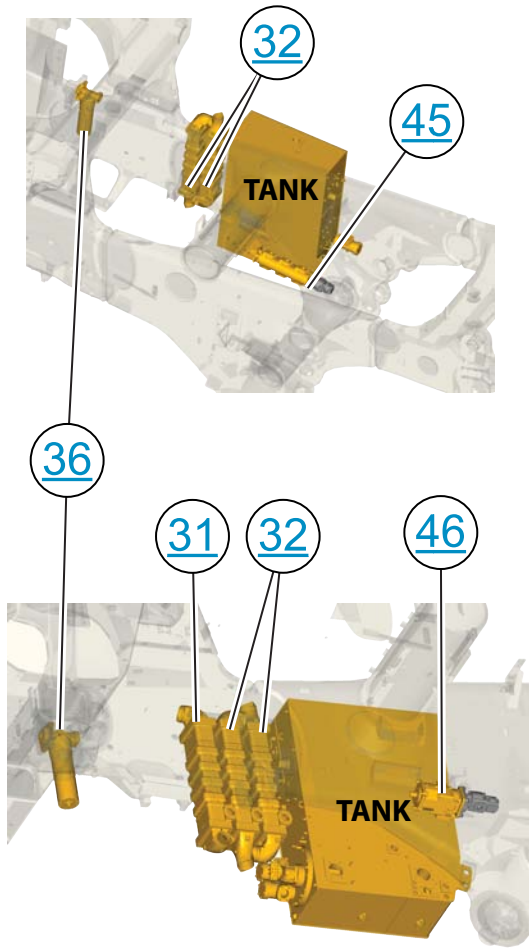
60



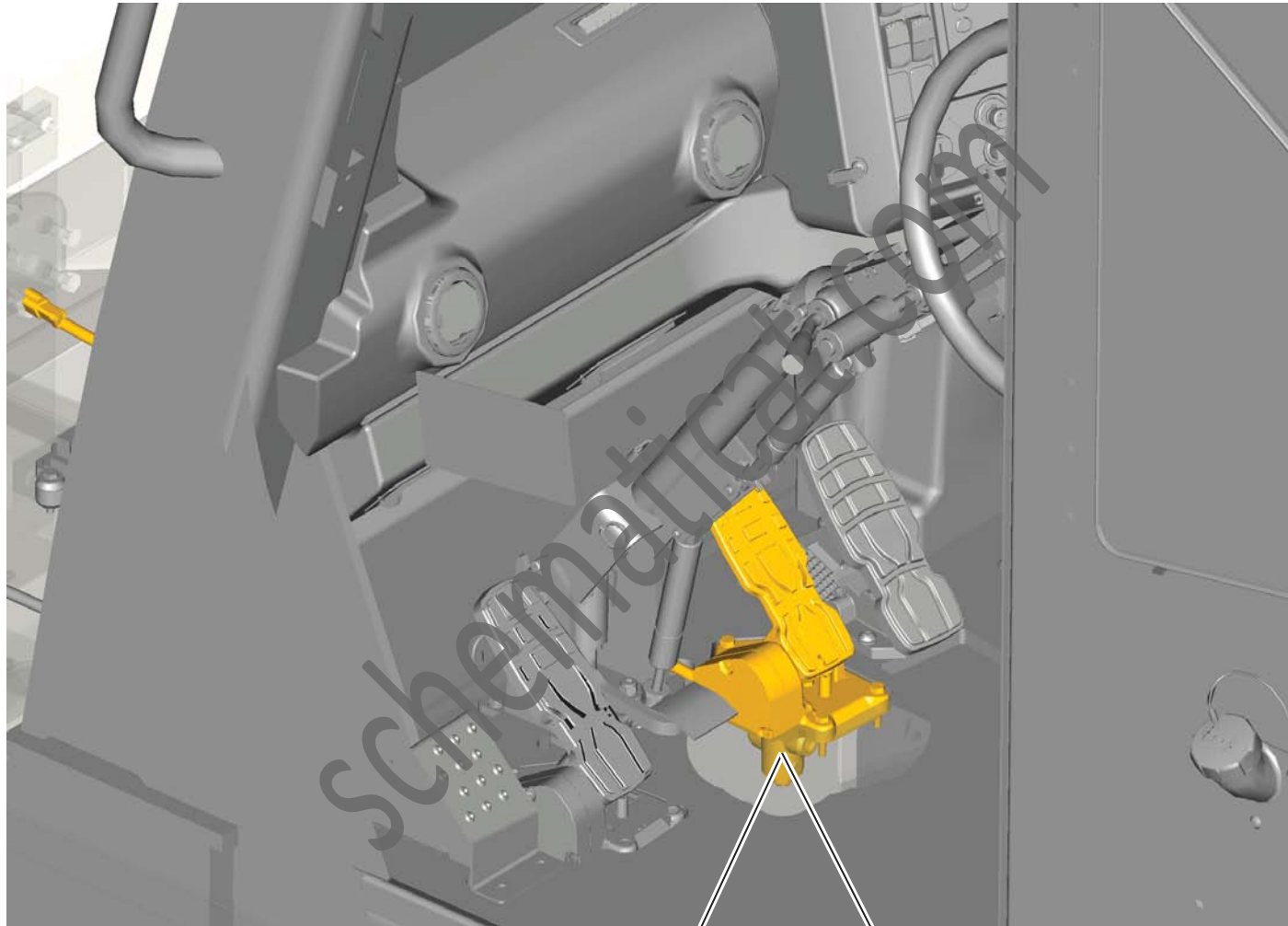
RIGHT FRONT

62

# CHASSIS VIEW



# SERVICE BRAKE CONTROL VALVE

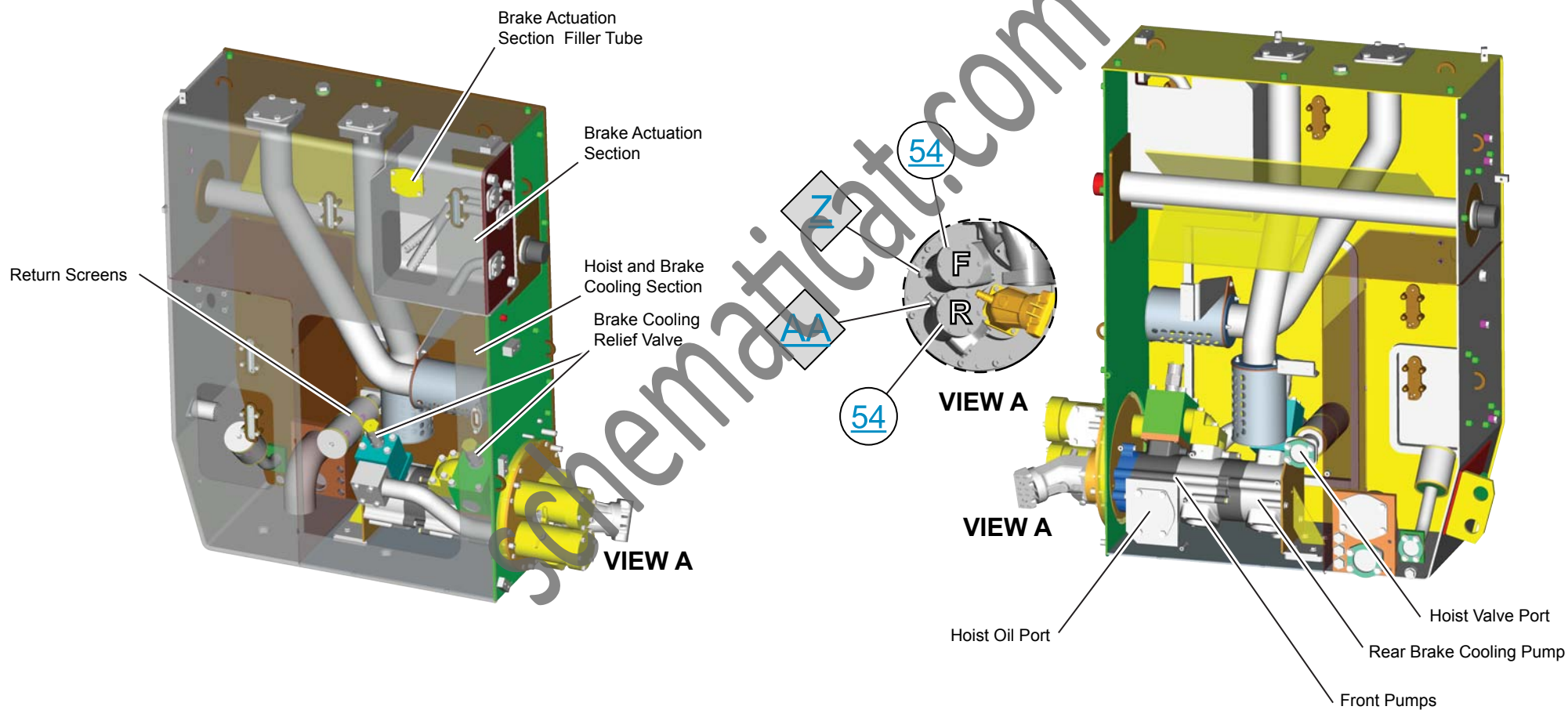


28

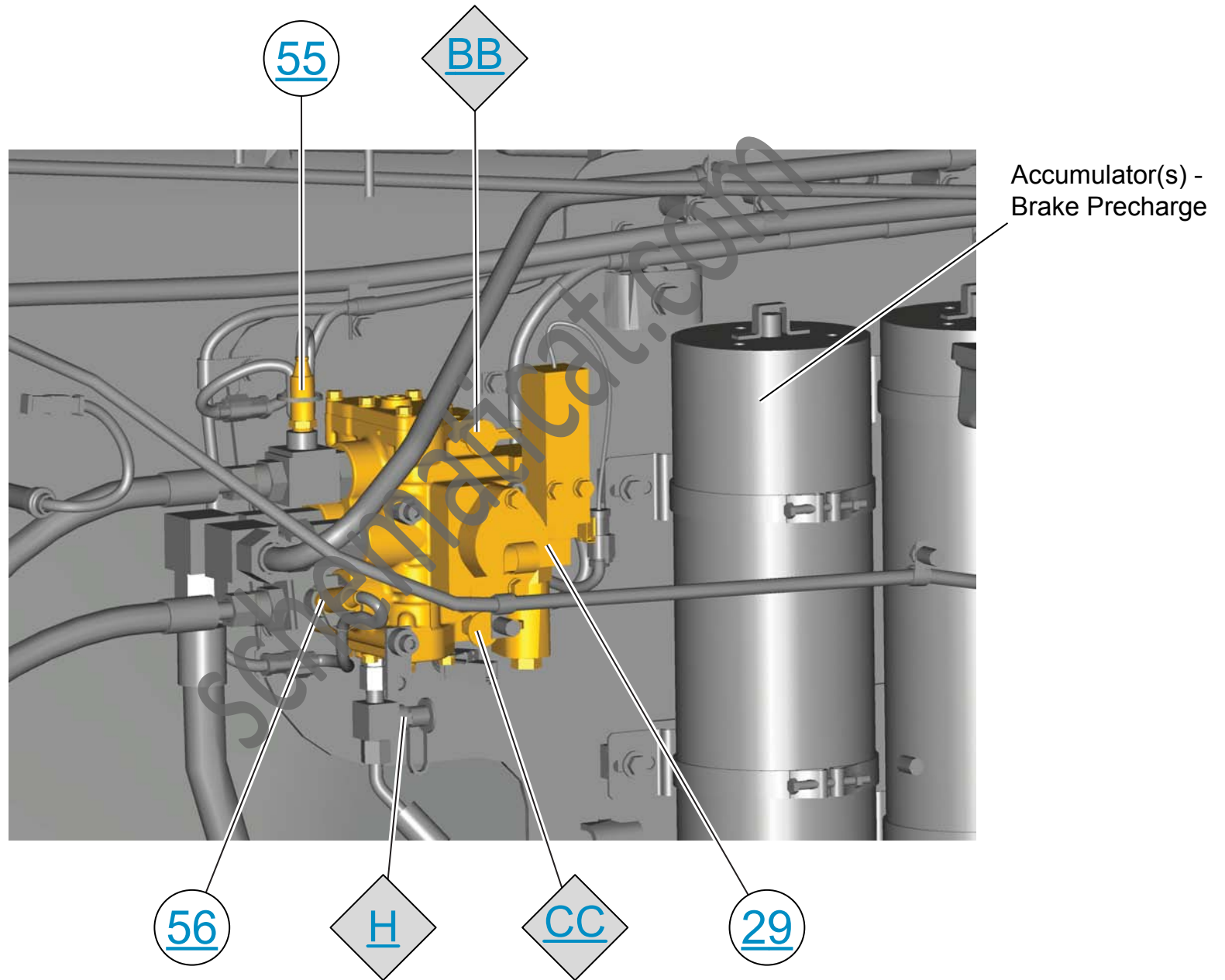
E

## FRONT

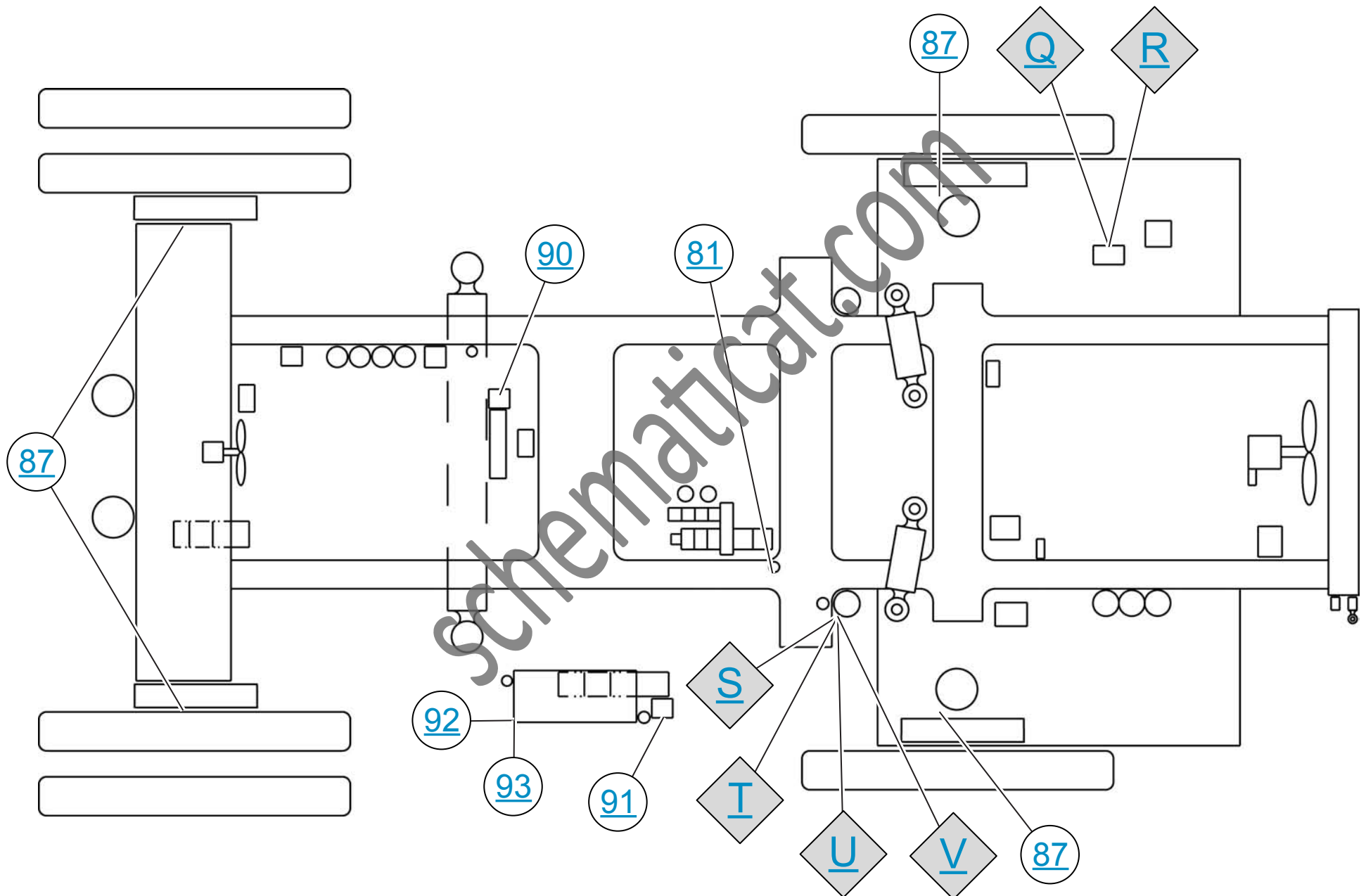
## REAR



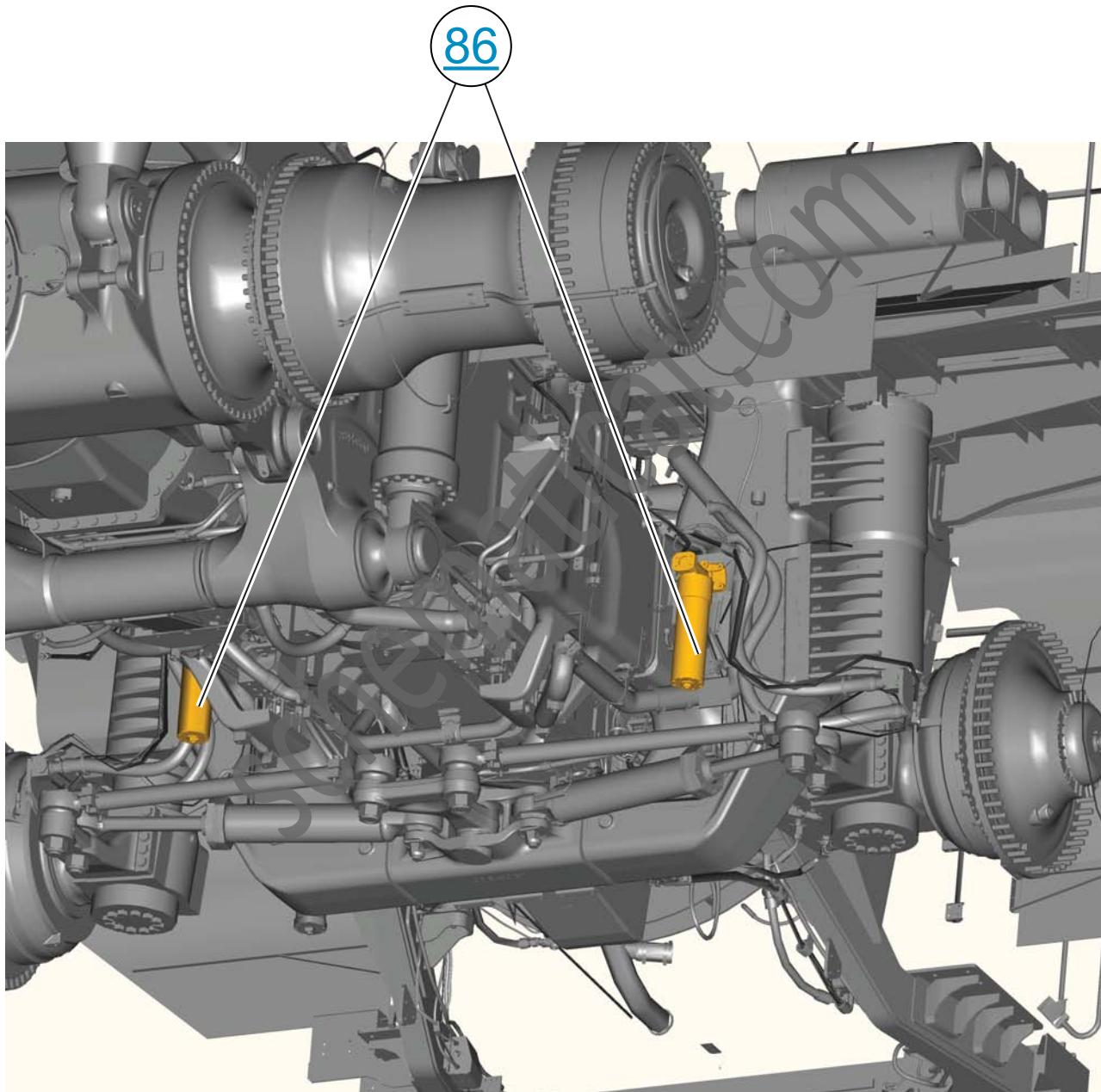
# TRACTION CONTROL SYSTEM VALVE



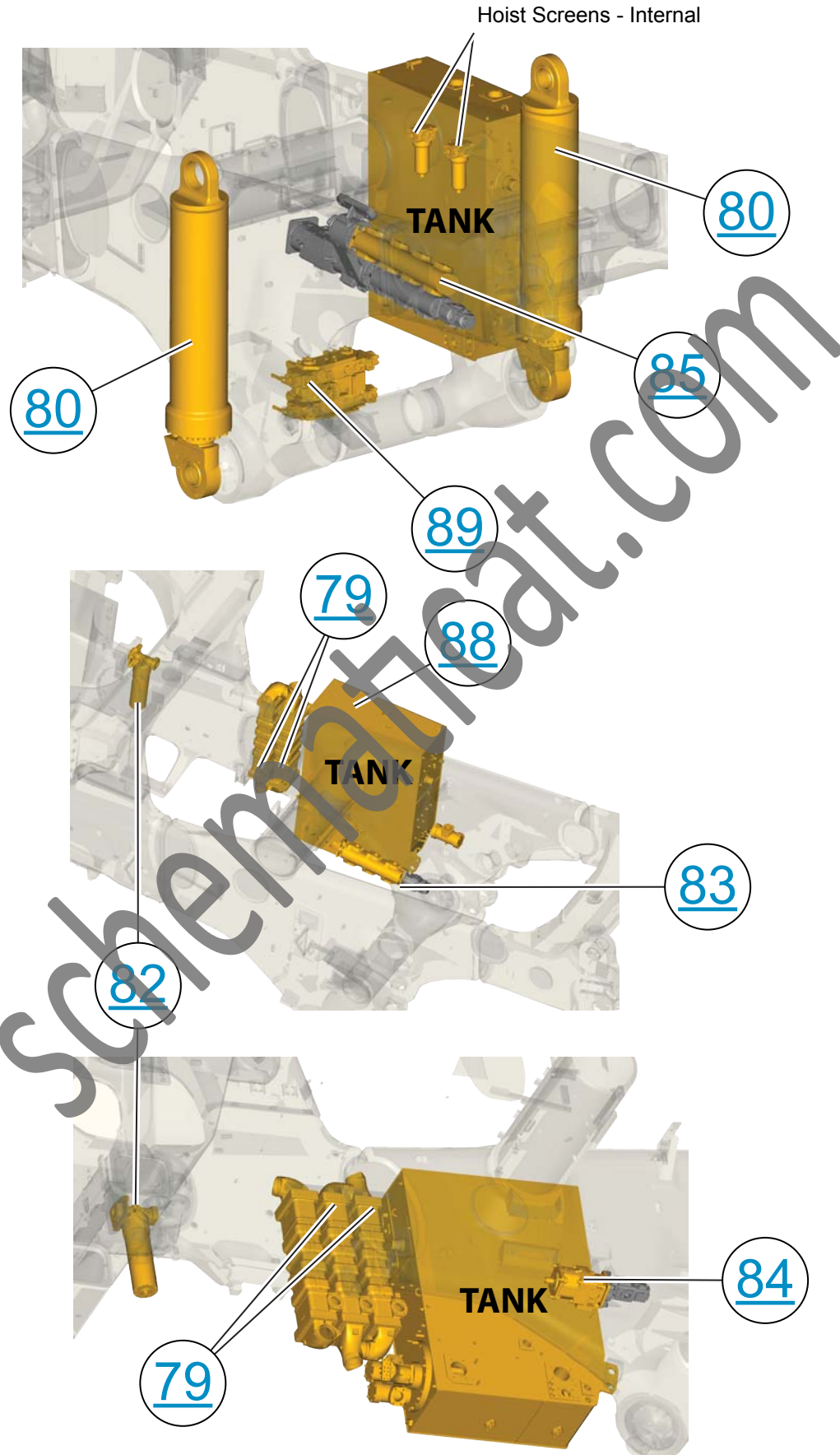
# MACHINE COMPONENT AND TAP LOCATIONS



# BRAKE COOLING SCREENS



# CHASSIS VIEW





## REAR

