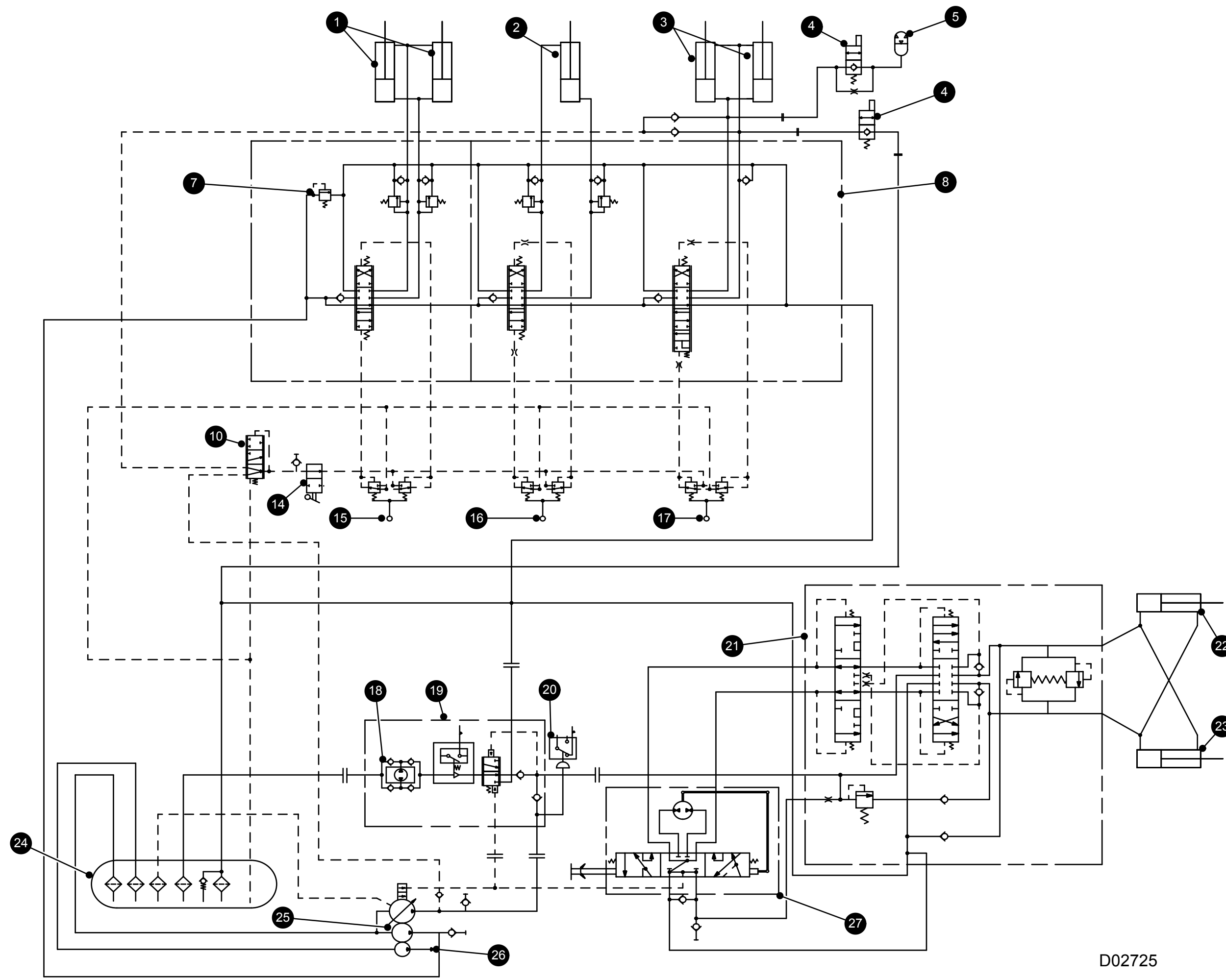


Schematic

938F Wheel Loader
IT38F Integrated Toolcarrier
Hydraulic System

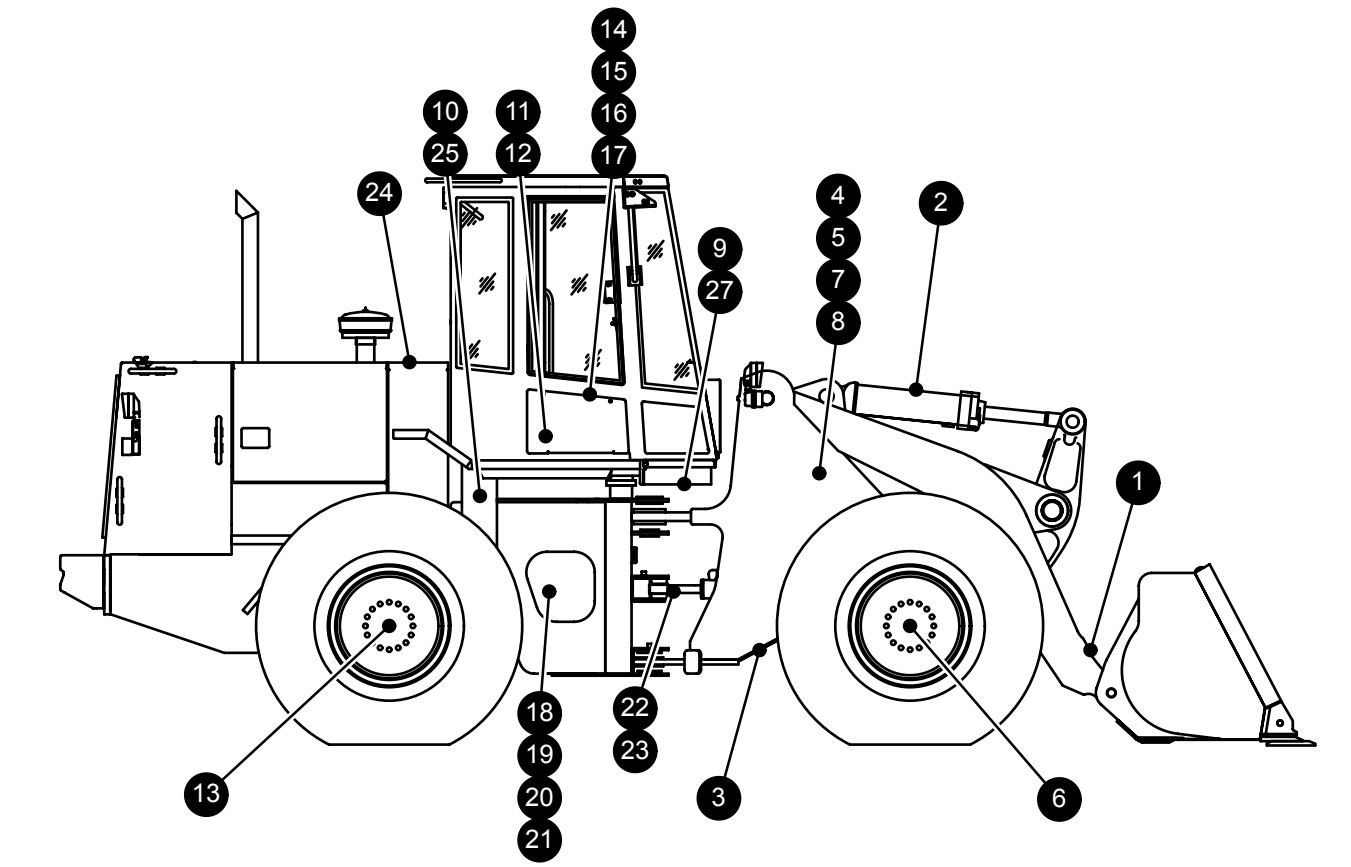
938F	IT38F
1KM1-UP	6FN1-UP
2RM1-UP	5DR1-UP
8SM1-UP	
7SN1-UP	

SchematicCat.com

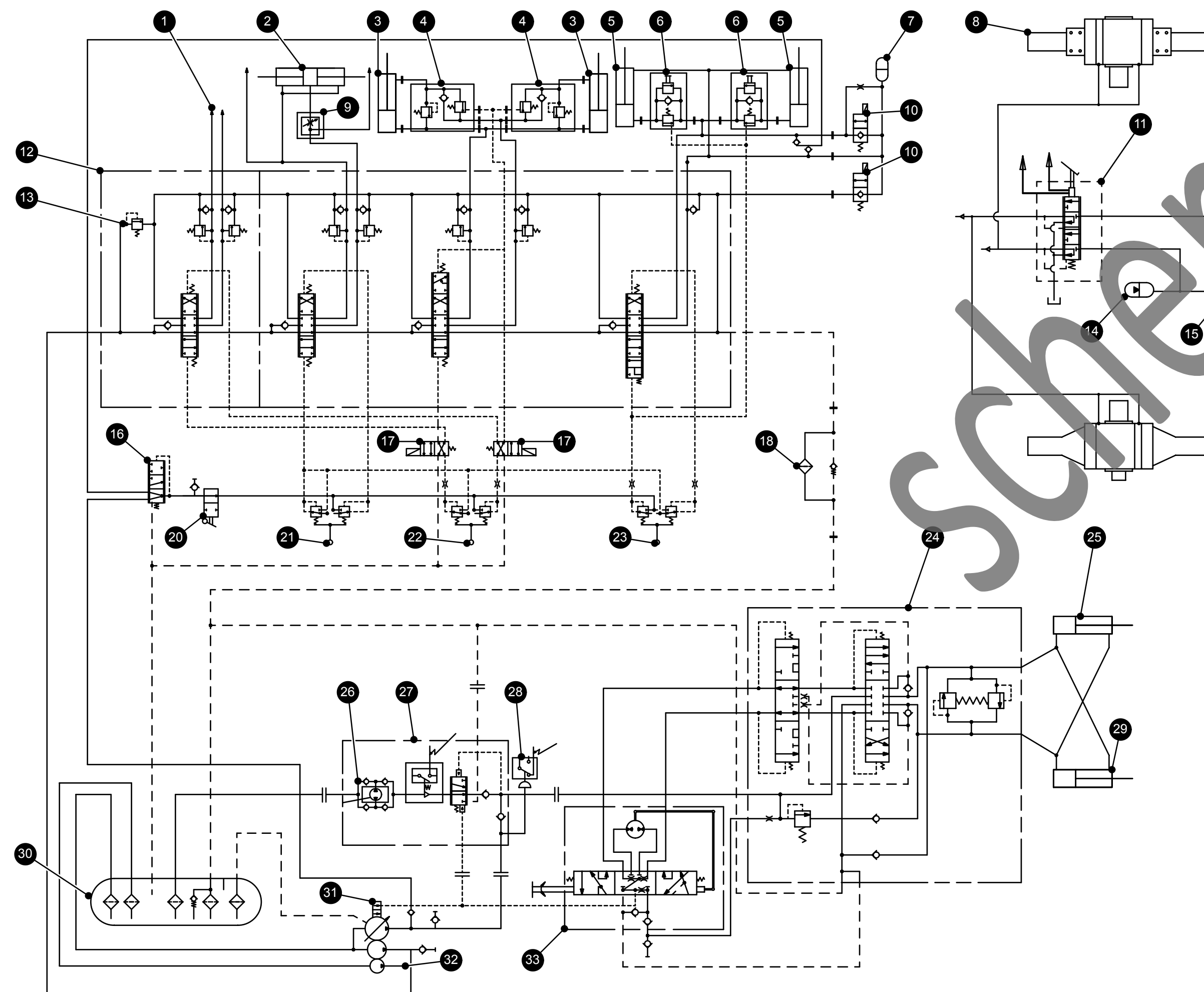


D02725

938F HYDRAULIC SCHEMATIC	
Item No.	Component
1	Auxiliary Cylinders
2	Tilt Cylinders
3	Lift Cylinders
4	Ride Control Solenoid Valve
5	Ride Control Oil Accumulator
6	Front Axle
7	Main Relief Valve
8	Main Control Valve
9	Brake Control Valve
10	Pressure Control And Selector Valve
11	Brake Accumulator
12	Brake Accumulator Charging Valve
13	Rear Axle
14	Lockout Valve
15	Auxiliary Pilot Control Valve
16	Tilt Pilot Control Valve
17	Lift Pilot Control Valve
18	Supplemental Steering Pump
19	Supplemental Steering Diverter Valve Group
20	Pressure Switch
21	Steering Control Valve
22	Left Steering Cylinder
23	Right Steering Cylinder
24	Hydraulic Tank And Filter Group
25	Hydraulic Pump Group
26	Line To Brake System
27	Metering Pump (Steering)

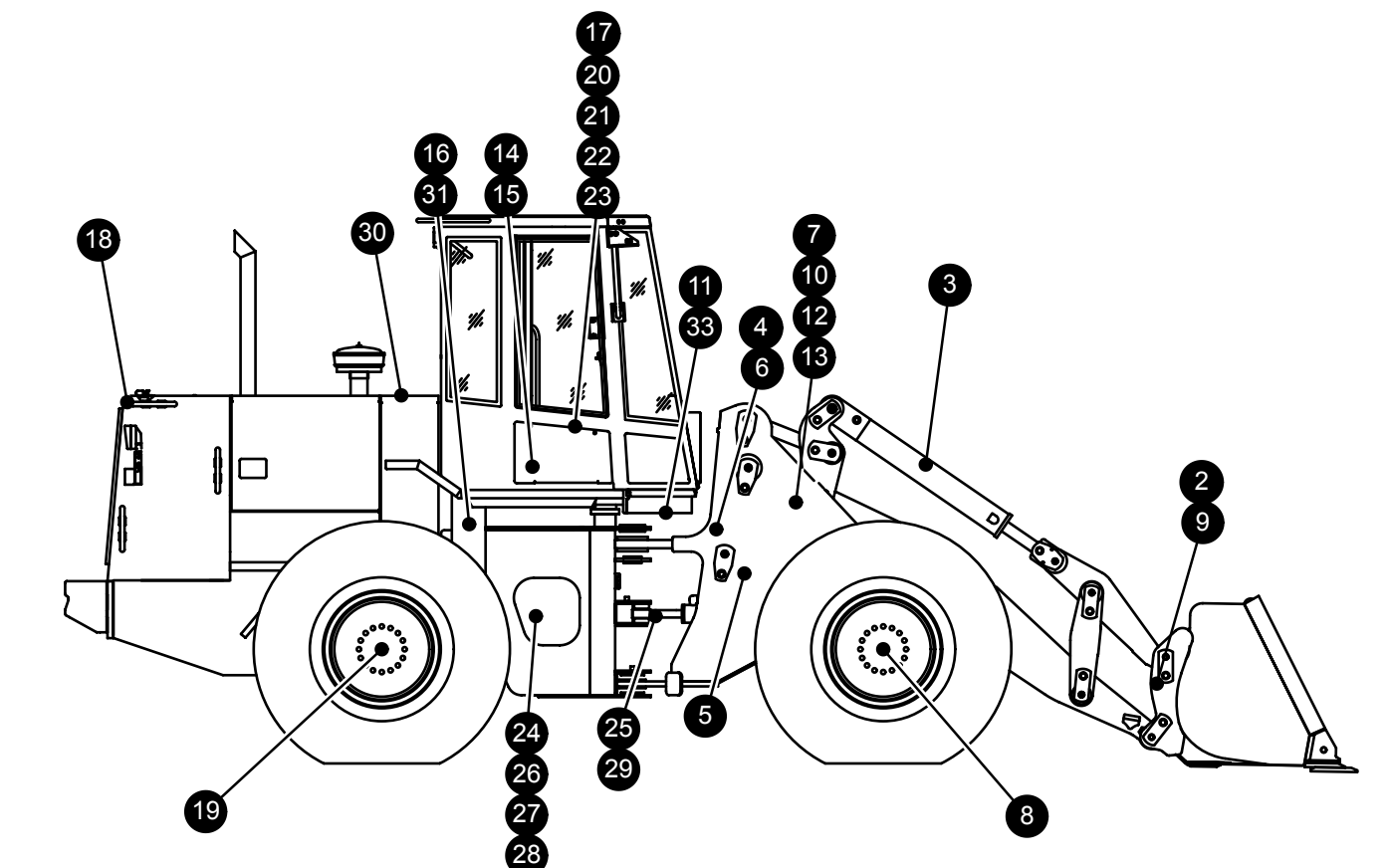


D02766



IT38F

IT38F HYDRAULIC SCHEMATIC	
Item No.	Component
1	Lines To Fourth Function
2	Coupler Cylinder
3	Tilt Cylinder
4	Tilt Load Control Valve
5	Lift Cylinders
6	Lift Load Control Valve
7	Ride Control Oil Accumulator
8	Front Axle
9	Rotary Shut Off Valve
10	Ride Control Solenoid Valve
11	Brake Control Valve
12	Main Control Valve
13	Main Relief Valve
14	Brake Accumulator
15	Brake Accumulator Charging Valve
16	Pressure Control And Selector Valve
17	Fourth Function Solenoid Control Valve
18	Hydraulic Oil Cooler
19	Rear Axle
20	Lockout Valve
21	Auxiliary Pilot Control Valve
22	Tilt Pilot Control Valve
23	Lift Pilot Control Valve
24	Steering Control Valve
25	Left Steering Cylinder
26	Supplemental Steering Pump
27	Supplemental Steering Diverter Valve Group
28	Pressure Switch
29	Right Steering Cylinder
30	Hydraulic Tank And Filter Group
31	Hydraulic Pump Group
32	Line To Brake System
33	Metering Pump (Steering)



D19363